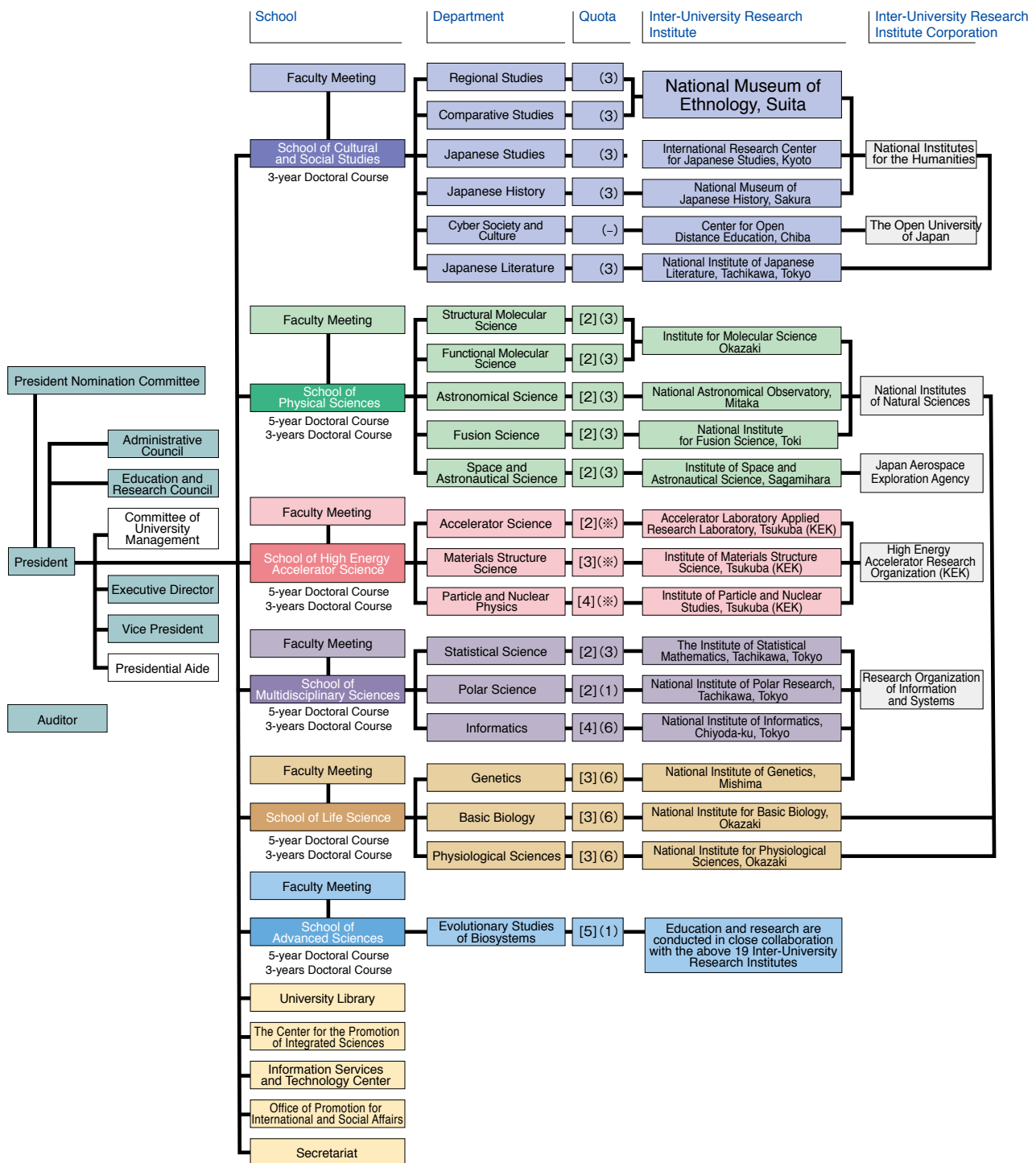


SOKENDAI (The Graduate University for Advanced Studies)

SOKENDAI (The Graduate University for Advanced Studies) is a national university offering a graduate program only. By taking advantage of the close network among the 19 Inter-University Research Institutes and the joint research opportunities thus afforded, and by promoting interaction among different schools and departments within SOKENDAI and also among universities and graduate schools both domestic and overseas, SOKENDAI aims to develop researchers with the ability to think from broad, comprehensive, and global perspectives.

University Organization



Total number of students accepted: 5-year Doctoral Course 41, 3-year Doctoral Course 59

※A few people

※[]: Number of students accepted into the 5-year Doctoral Course

※(): 3-year Doctoral Course the 3-year Doctoral Course



The Graduate University for Advanced Studies

Our museum accommodates the School of Cultural and Social Studies (with the Department of Regional Studies and the Department of Comparative Studies) of SOKENDAI (The Graduate University for Advanced Studies). Both of these departments conduct educational and research activities taking advantage of the human resources and advanced research environment of the Inter-University Research Institutes, which are playing a leading role in promoting joint research projects around Japan.

Purpose of the Departments of Regional Studies and Comparative Studies

Educational studies are composed of lectures and instruction by individual faculty members and shared seminars by multiple faculty members. Two types of shared seminars are offered: the basic seminar called the “Freshman Seminar” which is mainly for freshmen and the “Thesis Seminar” for sophomores and more advanced students focusing on instruction for thesis writing. Common subjects (advanced theory) on cultural anthropology and ethnology are also conducted primarily for 1st year students.

Under student exchange agreements, credits for these courses can be transferred among the Graduate School of Asian and African Area Studies at Kyoto University, the Graduate School of Human Sciences at Osaka University, the Graduate School of Intercultural Studies and the Graduate School of Human Development and Environment at Kobe University, and the Graduate School of Anthropology at Kyoto Bunkyo University.

In most cases, students work on preparation for fieldwork during the first year, and proceed to fieldwork in the second or subsequent years under the supervision of their advisors. Then, after finishing their fieldwork, the students complete their dissertations under the individual guidance of their advisors and through participation in the “Thesis Seminar”. The purposes of educational studies in both departments are as follows:

- (i) Original research on cultural anthropology and ethnology
- (ii) Writing a thesis based on data from long-term field work
- (iii) Training researchers with broad horizons and a deep sense of humanity

Number of Students as of April 1, 2016

Quota and Current Number of Students

Department	Quota	Current Students			Total
		First year	Second year	Third year	
Regional Studies	3	0	2	8	10
Comparative Studies	3	3	4	9	16
Total	6	3	6	17	26

Number of Doctoral Degrees Awarded

Academic Year	Regional Studies		Comparative Studies		Total
	By Completing Doctoral Course	By Submitting Dissertation	By Completing Doctoral Course	By Submitting Dissertation	
1991			1		1
1992					
1993			1	1	2
1994	2		1		3
1995	2		1		3
1996		3			3
1997	3		4		7
1998	4	2			6
1999					
2000	2		2	1	5
2001	1	1	2	1	5
2002	1	1		2	4
2003					
2004	2	3			5
2005	4	2		2	8
2006	2		3		5
2007	2	1	3		6
2008	1		1		2
2009		1	1	1	3
2010	2		2	3	7
2011	3		1	1	5
2012	1	1	1	1	4
2013			1	1	2
2014	2	1	2		5
2015	3	1			4
Total	37	17	27	14	95

Acceptance of Overseas Researchers under the RONPAKU (Ph.D. Dissertation) Program

Grantees of the RONPAKU (Dissertation Ph.D.) Program offered by the Japan Society for the Promotion of Science (RONPAKU fellows) conduct their research under the supervision of advisors in the respective department of the Graduate School. Currently, one overseas researcher is in the program.