

National Museum of Ethnology, Japan

Survey and Guide

2018-19





Preface

The National Museum of Ethnology, Japan (Minpaku) is the only research institute of cultural anthropology and ethnology in the world,that is equipped with one of the world's largest museum facilities as well as post-graduate educational facilities. This year, we are celebrating its 40th anniversary.

Human civilization today is facing the greatest turning point in several centuries. Up until recently, the group that was regarded as central watched and ruled in a unilateral manner the group regarded as peripheral. The dynamics of this power relationship seem to be changing now. These days, we witness that contacts, interactions and amalgamation, including the creative and the destructive, are occurring worldwide in a bilateral manner between those two entities, one used to be regarded as central and the other peripheral. I believe that the wisdom of cultural anthropology is needed now more than ever to establish a world where, while respecting diverse cultures, we will be able to live a peaceful life by bridging the gap between different languages and cultures.

Acknowledging those changes in global trends, Minpaku carried out 10 years of overall renovation of its permanent facilities to exhibit cultures of various regions of the world in the Main Exhibition Building.

The renovation was completed in March 2017. In addition, we also carried out overall renovation of our organizational structure. We are going to start promoting our research activities this April with the new structure that will meet the needs of the times. Our new sections are comprised of the Department of Human Basic Theories, the Department of Cross-disciplinary Field Science, the Department of Human Civilization Journals, the Department of Global Phenomena, and the Research and Development Center for Scientific Resources. Every section will cooperate with universities and research institutes in Japan and abroad. Its collaboration will extend to those who are in the source community, that is, the community of those who will become the direct subjects of research or from whom scientific materials will be collected.

Minpaku will thus further the development and promotion of research activities based upon cooperation through global networks.


With the comprehensive renewal of the exhibitions in the Main Exhibition Building now completed, the museum is moving forward to the next step, which is to develop a system for deployment next year. The system is designed to make the research data that have been and which are being accumulated by Minpaku freely accessible through the exhibition to users and researchers depending on their area of interest for their further studies. It works in conjunction with a next-generation electronic guide and videotheque as well as the Minpaku Virtual Museum on the website.

In addition, Minpaku is promoting the “Info-Forum Museum” project. The project aims to share its collection of audio-visual materials such as artifacts, photos and videos, with not only researchers and users at home and abroad, but also local communities as original producers (for photos, with local communities as subjects), and put newly gained insights into the database for subsequent sharing, leading ultimately to new joint research, joint exhibition, and community activities.

All these activities are designed to enrich and promote intellectual exchange among diverse users to support their discovery and collaboration, providing a forum for creativity in research, education, or museum operation, which have always been the key pursuits of Minpaku.



YOSHIDA Kenji
Director-General of
National Museum of Ethnology, Japan



Contents	
Preface	1
Purpose and Functions	2
History	3
Former Directors-General/Organization	4
Research Activities	10
Center for Cultural Resource Studies	23
Center for Academic Research Development	24
Joint Use of the Museum	26
Joint-Use Facilities for Scientific Research	27
Materials and Information Collection and Storage, and Public Relations	28
Materials and Databases	28
Exhibitions	32
International Cooperation	39
Partnership between the Museum and Society	40
Events and Public Relations	42
National Institutes for the Humanities	46
Transdisciplinary Project	48
SOKENDAI (The Graduate University for Advanced Studies)	50
General Information	52



Cover: Kiswa, West Asia

Purpose

The National Museum of Ethnology conducts anthropological and ethnological research and aims to promote a general understanding and awareness of peoples, societies and cultures around the world through the collection and conservation of ethnographic materials and public exhibitions. Minpaku was established in 1974 as an Inter-University Research Institute under the “Law to amend part of the National School Establishment Law” (No. 81, 1974). In April, 2004 it made a fresh start as a member of the National Institutes for the Humanities, under the “National University Corporation Act” (No. 112, 2003).

Functions

Research Institute	The Museum functions as a research institute equipped with a museum. It serves as a research center for anthropology and ethnology, providing information and research results to academic communities and the general public through publications, exhibitions, and other means.
Joint Research	As an Inter-University Research Institute, the Museum supports and organizes joint research projects with researchers from other academic institutions. Materials collected and stored in the Museum are used widely by those researchers.
Information Center	Over the years, the Museum has collected and maintained a great variety of ethnological research materials. These include artifacts, audiovisual records, books and other forms of research data. The Museum is also a repository for the Human Relations Area Files (HRAF). Information about these materials is provided to researchers via computer databases.
Exhibitions	The research results of the Museum are open to the public through exhibitions. Minpaku emphasizes the close-linkage between research and exhibition as a basic policy, and its academic staff participate in planning and organizing exhibitions. The main halls display regional and cross-cultural exhibitions. The former displays cultures and societies in major regions, such as Oceania and the Americas, whereas the latter emphasizes cultural elements such as music and language, which are shared across human societies. Thematic Exhibitions are also held occasionally. These focus on rapidly changing global situations and feature current research in cultural anthropology and ethnology. The Museum also presents, Special Exhibitions in spring and/or fall, in the Special Exhibition Hall.
Social Contributions	Also with the objective of presenting its latest research findings to the public, the Museum offers academic lecture programs, seminars, the Weekend Salon, special lectures and performances, film shows, and various workshops. The Museum also organizes intensive courses on museology and various projects for other museums as part of its international cooperation activities.
Graduate Programs	The School of Cultural and Social Studies of SOKENDAI (The Graduate University for Advanced Studies), based at the Inter-University Research Institute, is located at the Museum. It has two courses: Regional Studies and Comparative Studies. These Departments offer research training programs leading to the Ph.D. degree with the aim of producing unique professional scholars. The Museum also cooperates with other universities in training graduate students enrolled in doctoral programs.



1935	A plan to establish an ethnological museum of Japan as an incorporated foundation is developed under the leadership of SHIBUSAWA Keizo and SHIRATORI Kurakichi.
1964	The Japanese Society of Ethnology, the Anthropological Society of Nippon, the Japanese Archaeological Association, the Folklore Society of Japan, and the Japanese Association of Ethnology jointly submit to the Minister of Education and other relevant authorities a request to establish a national ethnological research museum.
1972	A research council (chaired by KUWAHARA Takeo) conducts a feasibility study on the establishment of a National Ethnological Research Museum. A basic concept plan for the museum is submitted to the Minister of Education.
1973	A preparatory council for the establishment of a National Ethnological Research Museum (tentative name) and a preparation office are set up.
1974	The National Museum of Ethnology is founded under the “Law to amend part of the National School Establishment Law” (No. 81, 1974), with an Administration Department, an Information and Documentation Center, and five Research Departments. Collecting artifacts from overseas was started in Papua New Guinea.
1975	A collection of folklore reference materials (28,432 items) owned by the former Ministry of Education Archive were transferred from the National Institute of Japanese Literature.
1977	The Museum buildings (28,778m ²) are completed and the surrounding area is landscaped. An opening ceremony is held. Exhibitions on Oceania, the Americas, Europe, Africa, West Asia, Music, Language, Southeast Asia, and East Asia (Japanese Culture), as well as the Videotheque are opened to the public.
1978	Long-term and carefully organized “Special Projects” are started as key components of ethnological research.
1979	The fourth Exhibition Hall (1,272m ²), which accommodates an additional exhibition on East Asia (Japanese Culture), is completed and opened to the public. Exhibitions on Central and North Asia, and East Asia (Ainu Culture) are opened to the public.
1981	The Auditorium (3,704m ²) is completed.
1983	The eighth Exhibition Hall and other facilities (4,816m ²) are completed. The exhibition on East Asia (Cultures of the Korean Peninsula and Regional Cultures of China) is opened to the public.
1984	The 10th anniversary of the Museum's founding is celebrated. “A Ten-Year History of the National Museum of Ethnology” is published.
1987	The 10th anniversary of the Museum's opening to the public is celebrated.
1989	The School of Cultural and Social Studies (with the Department of Regional Studies and the Department of Comparative Studies) of the Graduate University for Advanced Studies is established within the Museum. The Special Exhibition Hall and the library stacks (5,292m ²) are completed. The first special exhibition, “The Great Andes Civilization: Inca, the Reviving Empire of the Sun” is organized to celebrate the completion of the Special Exhibition Hall.
1993	The main Museum building is expanded and a joint research facility (891m ²) is completed.
1994	The 20th anniversary of the Museum's founding is celebrated. The Japan Center for Area Studies is established. (Discontinued in FY2005)
1995	Owing to damage caused by the Hanshin-Awaji Great Earthquake, the entire collection is closed for 45 days. (Earthquake-proof reinforced construction was retrofitted between 2002 and 2003) The Center of Excellence (COE) program is established: “Pioneering Research for the Development of New Ethnological Studies Using Multimedia in the Global Era.” (Concluded at the end of FY1999)
1996	The seventh Exhibition Hall (6,439m ²) is completed. Exhibitions on Language and Southeast Asia are renovated. An audio-visual gallery, the Materiatheque, and the exhibition on South Asia are opened to the public.
1997	The 20th anniversary of the Museum's opening to the public is celebrated.
1998	Following the enactment of the Ministerial Ordinance to revise part of the administrative rules for the Inter-University Research Institute (Ordinance of the Ministry of Education No. 24 of 1998), the five research departments are reorganized into four research departments and one research facility.
1999	The Minpaku “Digital Guide and Study Area” are completed and opened to the public.
2000	A renovated exhibition on the Cultures of the Korean Peninsula is opened. Partial renovation of the Museum exhibitions continued until 2003.
2004	As authorized by the National University Corporation Act (Act No.112,2003), the National Institutes for the Humanities, as part of the Inter-University Research Institute, is established. The former system of 4 research departments and 1 research center is reorganized into a system with 3 research departments and 2 centers. To facilitate joint research, screening by the Joint Research Committee, whose members include representatives from the research community, is established and the scope of the call for joint research applications expanded. Editing of a book entitled A Thirty-Year History of the National Museum of Ethnology is one of the earliest commemorative events started in preparation for the 30th anniversary of the Museum's founding. (The book is published in March 2006.)
2006	The Minpaku Collections Help Desk opens.
2007	The 30th anniversary of the Museum's opening to the public is celebrated.
2008	A collaborative agreement is signed with the Japanese Society of Cultural Anthropology.
2009	After renovation, the Africa and West Asia galleries are re-opened to the public.
2010	After renovation, the Music and Language galleries are re-opened to the public. New systems are consolidated including the establishment of the Center for International Academic Exchange.
2011	After renovation, the Oceania and Americas galleries are re-opened to the public.
2012	After renovation, the Europe gallery and Information Zone are re-opened to the public.
2013	After renovation, the East Asia–Culture of Japan gallery is re-opened to the public. Consolidation of new systems, including the Audit Office and Umesao Archives.
2014	After renovation, the East Asia–Culture of the Korean Peninsula, Regional Cultures of China, and Culture of Japan galleries are re-opened to the public.
2015	After renovation, the South Asia and the Southeast Asia galleries are re-opens to the public.
2016	After renovation, the Central and North Asia, and the East Asia–Ainu Culture galleries are re-opened to the public.
2017	Renovation of the Main Exhibitions was completed, anniversary ceremony is celebrated. The former system of 3 research departments and 2 research centers is reorganized into a system with 4 research departments and 1 research center. The 40th anniversary of the Museum's opening to the public is celebrated. Joint-Use Facilities for Scientific Research is established.

Former Directors-General / Organization

Former Directors-General as of April 1, 2018

First Director-General June 1974–March 1993 UMESAO Tadao (deceased) Ethnology, comparative study of civilizations	Second Director-General April 1993–March 1997 SASAKI Komei (deceased) History of agriculture in East and South Asia	Third Director-General April 1997–March 2003 ISHIGE Naomichi Cultural anthropology	Fourth Director-General April 2003–March 2009 MATSUZONO Makio Social anthropology	Fifth Director-General April 2009–March 2017 SUDO Ken'ichi Social anthropology
--	--	--	---	--

Current Director-General as of April 1, 2018

Sixth Director-General April 2017– YOSHIDA Kenji Representation of Culture in Museum
--

Governing Body as of April 1, 2018

Director-General YOSHIDA Kenji	Deputy Director-General (in charge of research, exchange and Institutional Research (IR)) NISHIO Tetsuo Professor, Department of Globalization and Humanity	Deputy Director-General (in charge of planning and coordination) SEKI Yuji Professor, Department of Modern Society and Civilization	System Coordinator NOBAYASHI Atsushi Professor, Center for Cultural Resource Studies	Audit Office SHIMADA Kenji Director
--	---	--	--	--

Board of Advisors as of April 1, 2018

The advisors discuss the Museum's management, and operational issues of critical importance, at request of the Director-General.

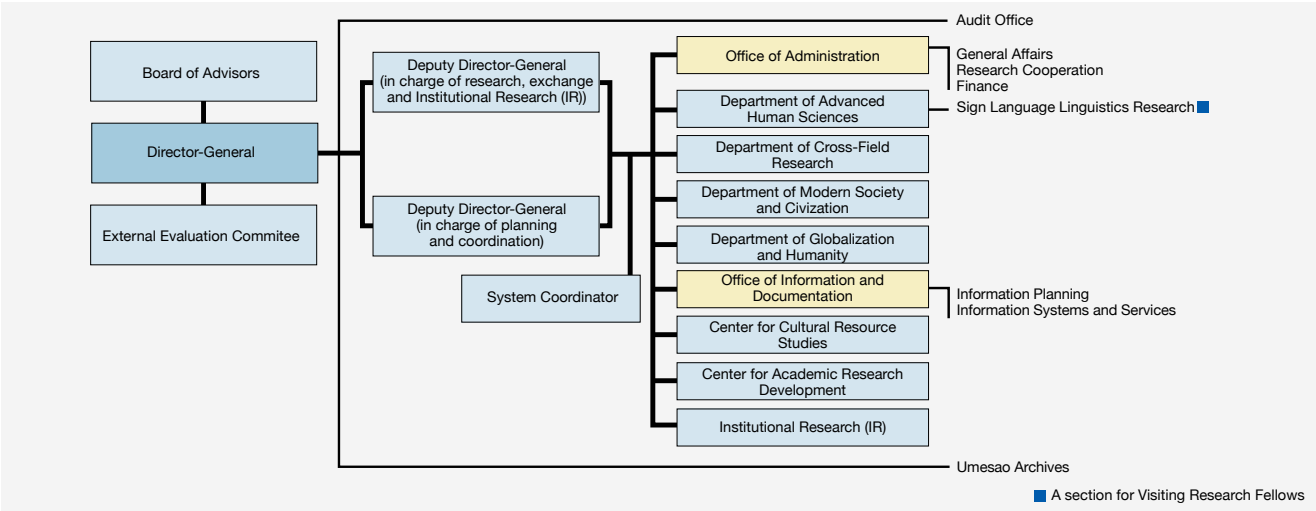
DEGUCHI Akira Vice Presidents,Shimane University GOTO Akira Professor, Faculty of Humanities, Nanzan University KUBOTA Sachiko Professor, Graduate School of Intercultural Studies, Kobe University KURIMOTO Eisei Vice Presidents, Osaka University MATSUDA Motoji Professor, Graduate School of Letters, Kyoto University SANO Chie Director, Center for Conservation Science Independent Administrative Institution Tokyo National Research Institute for Cultural Properties TOMIZAWA Hisao Professor, School of International Relations, University of Shizuoka	TOYOTA Yukio Professor,College of tourism,Rikkyo University YAMANASHI Toshio Director, The National Museum of Art, Osaka HAN Min Director, Department of Cross-Field Research, National Museum of Ethnology HAYASHI Isao Director, Center for Cultural Resource Studies, National Museum of Ethnology HIRAI Kyonosuke Director, Department of Modern Society and Civilization, National Museum of Ethnology NISHIO Tetsuo Deputy Director-General (in charge of research, exchange and Institutional Research (IR)), National Museum of Ethnology Director, Center for Academic Research Development	NOBUTA Toshihiro Director, Department of Globalization and Humanity, National Museum of Ethnology SEKI Yuji Deputy Director-General (in charge of planning and coordination), National Museum of Ethnology/ Director, Office of Information and Documentation SAITO Akira Professor, Department of Modern Society and Civilization, National Museum of Ethnology/ Course-Director, Department of Regional Studies, School of Cultural and Social Studies, SOKENDAI (The Graduate University for Advanced Studies) SONODA Naoko Director, Department of Advanced Human Sciences National Museum of Ethnology
--	--	--

External Evaluation Committee as of October 1, 2018

The committee meets to inspect and evaluate the Museum's research and educational activities at request of the Director-General.

ADACHI Jun Deputy Director General, National Institute of Informatics HACHIMURA Kozaburo Project Professor,College of Information Science and Engineering, Ritsumeikan University HORII Yoshitane President, KANSAL OSAKA 21st Century Association	IKEDA Hiroyuki Chairman,The Resona Foundation for Asia and Oceania OHNO Izumi Director, Japan International Cooperation Agency JICA Research Institute MIZUSAWA Tsutomu Director, The Museum of Modern Art, Kamakura & Hayama	YAMAGIWA Juichi President, Kyoto University YAMAMOTO Matori Professor, Faculty of Economics, Hosei University YAMASHITA Shinji Professor, Teikyo Heisei University Professor Emeritus, The University of Tokyo
--	---	---

Organization Chart as of April 1, 2018



Professors Emeriti as of April 1, 2018

1984– SOFUE Takao (deceased) Psychological anthropology	1996– DAIMARU Hiroshi (deceased) Comparative study of the history of lifestyles, based on clothing, etc.	2004– TACHIKAWA Musashi Philosophy of religion, Buddhist thought	2012– NAKAMAKI Hirochika Japanese religion, Brazilian company culture; Japan
1985– IWATA Keiji (deceased) Cultural anthropology	1996– FUJII Tomoaki Ethnomusicology, Anthropology of music	2004– TANABE Shigeharu Social anthropology of Southeast Asia	2014– KOBAYASHI Shigeki Museum Science, Cultural Anthropology
1986– KATO Kyuzo (deceased) Ethnic history in North and Central Asia	1996– TOMOEDA Hiroyasu (deceased) Social anthropology	2004– YAMADA Mutsuo (deceased) History of Latin America, Area study of Latin America	2014– TAMURA Katsumi Cultural Anthropology; Southeast Asia, East Asia
1988– ITOH Mikiharu (deceased) Anthropology of religion	1997– SASAKI Komei (deceased) History of agriculture in East and South Asia	2005– EGUCHI, Paul K. (deceased) Oral literature and material culture of the Fulfulde-speaking people, Cameroon	2014– YOSHIMOTO Shinobu Textile Arts and Technology; Asia, Africa, America, Europe
1988– NAKAMURA Shunkichi (deceased) Study of ethnic technologies and tools	1997– SUGIMURA Toh Study of ethno-arts	2005– MATSUBARA Masatake Social structure, Turkey, Eastern Asia, Central Asia	2015– KUBO Masatoshi Ethno-Informatics, Computer Ethnology, Study on Aboriginal Australian Culture
1989– KIMISHIMA Hisako Chinese folklore	1998– WADA Shohei Comparative study of cultures, Anthropology of Africa	2005– OHTSUKA Kazuyoshi Aynu (Ainu) culture, Material culture of North Asian food gatherers, paleoecology, Prehistoric Subsistence, Japan	2015– SHOJI Hiroshi Finno-Ugric Linguistics, Ethnolinguistics, Language Policy; Northern Europe, China
1990– WADA Yuiti (deceased) Linguistic anthropology	2000– SHIMIZU Akitoshi Comparative study of families, Study of Oceania	2006– ISHIMORI Shuzo Cultural development studies, anthropology of tourism, Museum anthropology, Cultural resource management; Micronesia, Polynesia, Southeast Asia, Japan	2015– YASUGI Yoshiho Linguistic Anthropology, Writing Systems, Mayan Civilization, Mesoamerica
1991– TARUMI Minoru (deceased) Anthropology in spatial domains	2001– HATA Nobuyuki Economic anthropology, Anthropology of Africa	2006– NOMURA Masaichi (deceased) Nonverbal communication, Ethnology of Mediterranean Europe	2016– ASAKURA Toshio Social structures in East Asia; Korea,Japan
1992– SUGIMOTO Hisatsugu Cultural geography, Cultural anthropology	2001– KURODA Etsuko Theory of ethnicity and social culture, anthropology of Central America	2007– OMORI Yasuhiro Ethnology, Visual anthropology	2016– SUGIMOTO Yoshio Social anthropology; Sri Lanka, South India
1993– KATAKURA Motoko (deceased) Social geography, Ethnology	2001– SAKIYAMA Osamu Linguistic anthropology, Oceanic linguistics	2007– YAMAMOTO Norio Ethnobotany, Ethnology, the Andes, the Himalayas	2017– SUDO Ken'ichi Social anthropology
1993– OGYU Chikasato (deceased) Cultural structure of Latin America	2002– KOYAMA Shuzo Ethnoarchaeology	2009– MATSUZONO Makio Social anthropology	2017– TAKEZAWA Shoichiro African history, History of anthropological thought; West Africa
1993– UMESAO Tadao (deceased) Ethnology, comparative study of civilizations	2003– ISHIGE Naomichi Cultural anthropology	2010– Matsuyama Toshio Ethnology of contemporary Australian aboriginal society	2017– TSUKADA Shigeyuki Ethnohistory; Southern China
1994– TAKEMURA Takuji (deceased) Social anthropology	2003– KURITA Yasuyuki Museum anthropology, Study of Bhutan	2011– NAGANO Yasuhiko Historical linguistics, lexical semantics; Tibeto-Burman area	2018– INTOH Michiko Prehistory of Oceania; Oceania, Island Southeast Asia
1995– CHOU Ta-sheng (deceased) Theory of material culture	2004– FUJII Tatsuhiko Prehistory of the New World continent	2012– AKIMICHI Tomoya Maritime anthropology, Ecological anthropology; Oceania,Southeast Asia, Japan	2018– YOKOYAMA Hiroko Cultural anthropology, Chinese society and culture
1995– MATSUZAWA Kazuko Social anthropology	2004– Kumakura Isao History of Japanese culture		

Organization Consists

Under the Director-General, two Deputy Directors-General (one in charge of research exchange and Institutional Research (IR), and one in charge of planning and coordination) are appointed to oversee the Department of Advanced Human Sciences, Department of Cross-Field Research, Department of Modern Society and Civilization, Department of Globalization and Humanity, Center for Cultural Resource Studies, Center for Academic Research Development, Institutional Research (IR) Office, and Umesao Archives. Our administrative organization consists of the Audit Office, Office of Administration (General Affairs Section, Research Cooperation Section and Finance Section) and Office of Information and Documentation (Information Planning Section and Information Systems and Services Section).

Our research organization was changed in April 2017, to respond to the global-scale challenges of today's world, pioneer new academic frontiers promote research projects leading to new value creation, and promote cross-field area studies firmly rooted in cultural anthropology and museum functions.

Research organization as of January 1, 2019

Department of Advanced Human Sciences

SONODA Naoko Director

The purpose of this Department is to deepen theoretical research in the basic study of human sciences and thereby extract new academic challenges and create a new cross-disciplinary domain. In addition, we have established a Sign Language Linguistics Research Section supported by the Nippon Foundation as a subsidized research section, with the objectives of promoting the comparative studies of sign languages and vocal languages and develop new insights into human language.

Professors	Associate Professors	Assistant Professors	Sign Language Linguistics Research Section Project Professor
DEGUCHI Masayuki Third Sector Research, Civil Society Studies	FUKUOKA Shota Ethnomusicology; Southeast Asia, Indonesia	KIKUSAWA Ritsuko Linguistics, Austronesian languages	IIZUMI Naoko Implementation and Evaluation of Curriculum for Training and Evaluation of Academic Sign-language Interpreters
HIDAKA Shingo Conservation Science	KAWASE Itsushi Visual Anthropology	MARUKAWA Yuzo Informatics of Association, Information Service for Cultural Assets	Project Assistant Professor
SONODA Naoko Conservation Science		YAMAMOTO Yasunori Museum Informatics	SAGARA Keiko Sign Language Linguistics, Deaf Education

Department of Cross-Field Research

HAN Min Director

Professors	Associate Professors
HAN Min Social Anthropology; China	MATTHEWS, Peter J. Ethnobotany, Prehistory, Crop Plant Biogeography; Asia, Pacific
KASHINAGA Masao Ethnography of Southeast Asia; Vietnam, Tai Area	UDAGAWA Taeko Cultural Anthropology, Gender Studies; Italy, Mediterranean Europe
KONAGAYA Yuki Cultural Ecology and Cosmology; Central Asia, Mongolia	

The Department aims to create a new domain of anthropological area studies by deepening regional ethnographic research in various regions of the world and establishing new foundations for cross-field research.

Department of Modern Society and Civilization

HIRAI Kyonosuke Director

Professors	Associate Professors
HIRAI Kyonosuke Economic Anthropology, Anthropology of Work; Southeast Asia	FUJIMOTO Toko Cultural Anthropology, Central Asian Studies
IKEYA Kazunobu Environmental Anthropology, Cultural Geography; Southern Africa, Japan	SUZUKI Motoi Anthropological Perspectives on Development Assistance Evaluations
	TERAMURA Hirofumi Culture and Information Science, Archaeological Information
	UEBA Yoko Textile and Handcraft; South Asia, Middle East

The Department aims to create a set of new values for responding to that challenges humanity faces today, and to envisage the future of civilization through interdisciplinary approach of looking into the future by way of the events of the past.

Department of Globalization and Humanity

NOBUTA Toshihiro Director

Professors	Associate Professors	Assistant Professor
MIO Minoru Religious Anthropology; South Asia, India	NOBUTA Toshihiro Social Anthropology, Southeast Asian Studies	AISHIMA Hatsuki Social Anthropology; Islam, Middle East
MORI Akiko Cultural Anthropology, Ethnography; Central Europe, Germany, Austria, Japan	SUZUKI Nanami Cultural Anthropology, Culture of Medicine, Life-design Studies, American and European Medieval Social History	MINAMI Makito Ecological Anthropology; South Asia
NISHIO Tetsuo Linguistics, Arab Culture; Middle East, North Africa		MISHIMA Teiko Anthropology, International Migration; Senegal, West Africa

To create new values for responding to challenges that humanity faces today, the department and to envisage a global society through an interdisciplinary approach of taking a bird's eye view of the world by way of regional events.

Center for Cultural Resource Studies

HAYASHI Isao Director

Professors	Associate Professors
HAYASHI Isao Social Structure, Cosmology, Risk and Disaster; Melanesia, Polynesia, Japan	KISHIGAMI Nobuhiro (Joint Appointment) Cultural Anthropology, Inuit Studies; North America
IIDA Taku Ecological Anthropology, Fisher Studies; Madagascar, Japan	NOBAYASHI Atsushi Ethnoarchaeology, Material Culture, Austronesian Cultures; East Asia, Formosa
	SASAHARA Ryoji Folk Culture, Performing Arts; Japan
	TERADA Yoshitaka Ethnomusicology, Performing Arts of Asia
	ITO Atsunori Social Anthropology, Native American Studies, Indigenous Arts and Intellectual Property Issues
	SATO Koji Architectural History, Ethno-architecture; Southeast Asia, Oceania
	YAMANAKA Yuriko Comparative Study of Traditions on Alexander the Great; West Asia, Iran
	SAITO Reiko Ainu and Northern Indigenous Peoples Studies, Material Culture; North Pacific Rim

The Center aims to plan and promote research projects that improve the sharing of cultural resources in an interdisciplinary and international manner.

Center for Academic Research Development

NISHIO Tetsuo Director

IKEYA Kazunobu Professor, Department of Modern Society and Civilization	NOBAYASHI Atsushi Professor, Center for Cultural Resource Studies	YAGI Yuriko Assistant Professor, Department of Advanced Human Sciences
KAWAI Hironao Associate Professor, Department of Globalization and Humanity	UDA Shuheï Associate Professor, Department of Modern Society and Civilization	YAMANAKA Yuriko Associate Professor, Center for Cultural Resource Studies

The Center aims to plan and oversee the infrastructure enhancement and international and national strategies for research organizations to be used jointly to explore new domains.

Umesao Archives

IIDA Taku Director
Professor, Center for Cultural Resource Studies

Visiting Researchers

Department of Advanced Human Sciences

UDA Norihiko
Associate Professor, Faculty of Library, Information and Media Science, University of Tsukuba
Cultural Information Resources in the Digital Humanities:Advanced Integration of Databases

Sign Language Linguistics Research Section (supported by the Nippon Foundation) (an affiliated section)

HARA Daisuke
Professor, School of Engineering Toyota Technological Institute
A Study on the Syllable Structure and Its Well-formedness in Sign Language

Special Visiting Researchers

Department of Advanced Human Sciences

SHITAMICHI Motoyuki
Photographer / Artist
Study on the Creative Use and Archiving of Still Photographs and Moving Images

TAKANO Akihiko
Professor, Digital Content and Media Sciences
Research Division, National Institute of Informatics
Information Integration and Services of the Info-Forum Museum

TSUJI Kunihiro
Association Senior Director, KNOWLEDGE CAPITAL
Construction of a next-generation exhibition guide system

Sign Language Linguistics Research Section (supported by the Nippon Foundation) (an affiliated section)

TAKEI Wataru
Professor, College of Human and Social Science, School of Teacher Education, Kanazawa University
Study on System Construction of Academic Sign Language Interpreter's Training

Department of Globalization and Humanity

NAWATA Hiroshi
Professor, Graduate School of International Resource Sciences, Akita University
A Study of the Dynamics in Natural Resource Management and Material Cultures in the Middle East

Center for Cultural Resource Studies

HIRAI Yasuyuki
Professor, Faculty of Design, Kyushu University
Theory and Practice for Universal Museum Planning

KITAHARA Jirota
Associate Professor, Center for Ainu and Indigenous Studies, Hokkaido University
Comparative Study between the Ainu, Japan and Neighboring Cultures

NAKAO Katsumi
Professor, Faculty of the Humanities, J.F. Oberlin University
Research on the History of Japanese Anthropology Based on the Ethnological Study Archives

TAMORI Masakazu
Research Fellow, Graduate School of Arts and Science, The University of Tokyo
An Anthropological Study on Globalization and Transformation in South Asian Music Culture

Overseas Visiting Fellows

ARAKAWA, Fumiyasu
Museum Director and Associate Professor, Department of Anthropology, New Mexico State University (USA)
November 1, 2017 – June 30, 2018
Collaborative Research on Mimbres Pottery Interpretation with Native American Artists

HOFER, Theresia
Lecturer, Department of Archaeology and Anthropology, University of Bristol (UK)
September 23, 2018 – November 30, 2018
Signing and Belonging in Contemporary Lhasa, Tibet

KADOI, Yuka
Visiting Fellow, Dar al Athar al Islamiyyah (State of Kuwait)
November 1, 2018 – December 5, 2018
Data Enhancement of the Middle-East Cultural Artefact Collection

KUDAISSYA, Gyanesh
Associate Professor, National University of Singapore (Singapore)
May 14, 2018 – June 13, 2018
Re-imaging the 'Region' in Contemporary South Asia

OUSMANOU, Adama
Senior Lecturer, Department of History, University of Maroua (Cameroon)
November 15, 2018 – February 15, 2019
Historic-Anthropological Study of National Museum of Ethnology's Cameroon Collection

POST, Jennifer Campbell
Senior Lecturer, Department of Archaeology and Anthropology, The University of Arizona (USA)
April 16, 2018 – June 15, 2018
Migration of Central Asian musical instruments into South Asia

(In alphabetical order by family name.)

ROSSELLA, Ragazzi
Associate Professor, Tromsø University Museum, UiT The Arctic University of Norway (Norway)
April 16, 2018 – June 30, 2018
The Visual Anthropological Study on Mobility and Acculturation of Minority

SOMFAI, David Istvan
PhD Researcher, Institute of Ethnology, Hungarian Academy of Science (Hungary)
November 1, 2018 – September 30, 2019
Museum Fieldwork on Shamanism in Mongolia and Northeast Asia: Past and Present Connecting Minpaku's collection on Shamanism to collections in Hungary.

SHELTON, Anthony Alan
Director, Museum of Anthropology, Professor of Anthropology, University of British Columbia (Canada)
January 4, 2018 – June 29, 2018
A Methodological Study for Creating the Info-Forum Museum at the National Museum of Ethnology: Expanded Application of the Reciprocal Research Network (RRN) System of the Museum of Anthropology (MOA) at the University of British Columbia (UBC)

SIMON, Scott Eliot
Professor, School of Sociological and Anthropological Studies, University of Ottawa (Canada)
August 1, 2017 – July 27, 2018
The Material Ecology of Human-Animal Relations in Japan and Taiwan

Research Fellows

FURUKAWA Fukachi
Support for joint use of academic data

KAMINO Chie
Support for academic research advancement

OSAWA Yoshimi
Support for museum-society partnership

SUEMORI Kaoru
Support for joint use of cultural resources

Project Research Fellows

HASHIMOTO Sachi
Assistant work for the cultural resource planning project "Research on the Preservation and Management of Tangible Cultural Resources"

ISHIHARA Yamato
RA work for Sign Language Linguistics Research Section (supported by the Nippon Foundation) – SILLR

ISHIYAMA Shun
Digitalization and copyright procedures of photo materials

KAWAMURA Yukako
Assistant work for the cultural resource planning project "Research on the Preservation and Management of Tangible Cultural Resources"

KOBAYASHI Naoaki
Digitalization and copyright procedures of photo materials

PENG Yujie
Research and study of ethnological materials and operational assistance for planned research

Visiting Researchers FY2017

The Museum accepts domestic and international researchers as visiting researchers. In FY2017, we accepted a total of 103 researchers including 25 non-Japanese from 16 countries and regions.

Visiting Graduate Student Program FY2017

The Museum, as an Inter-University Research Institute, accepts students who are enrolled in doctoral courses at Japanese national, public, and private universities. Upon request from their universities, these students may be accepted as Visiting Graduate Student in order to provide them with research guidance on specific themes for a fixed period of time. Visiting Graduate Students can pursue their research under the guidance of Museum scholars, use the facilities, and attend classes at the School of Cultural and Social Studies of SOKENDAI (The Graduate University for Advanced Studies) (Regional Studies and Comparative Studies) established at the Museum. In FY2017, we accepted two students from national universities, and two from private universities.

Administrative organization as of April 1, 2018

Office of Administration

SHIMADA Kenji Director

General Affairs Section

TSUNEYOSHI Yuji Head

NAKANO Tetsuya Assistant Head

Research Cooperation Section

SERI Masanori Head

KAJIWARA Koji Assistant Head

Finance Section

NAKAI Akira Head

ITO Shinichi Assistant Head

Office of Information and Documentation

SEKI Yuji Director SHIMADA Kenji Deputy Director

Information Planning Section

KANEKUNI Seiji Head

Information Systems and Services Section

IMANAKA Hiroyuki Head

NAKAMURA Futoshi Assistant Head

Staff

as of January 1, 2019

Note: Visiting Research Fellows and Overseas Visiting Fellows are not included in the numbers given for "Staff" members.

Category	Director-General	Prof.	Assoc. Prof.	Assist. Prof.	Project Prof.	Project Assoc. Prof.	Project Assist. Prof.	Subtotal	Administrative & Technical Staff	Total
Staff	1	22	24	3	1	0	1	52	48	100
Visiting Research Fellows		7	4					11		11
Overseas Visiting Fellows		1	1					2		2
Director-General	1							1		1
Audit Office									(1)	(1)
Office of Administration									27	27
Office of Information and Documentation									21	21
Research Departments		16	21	3	1	0	1	42		42
Center for Cultural Resource Studies		5	4	0				9		9

Parenthesis () shows the number of staff members holding two posts. The figure for administrative staff includes one project specialists.

Budget

FY2017

Revenue

Category	(millions of yen)
Management Expenses Grants	2,654
Foundation	2,306
Special factors	229
Others	119
Revenue	73
Admission fee	23
Graduate student education	35
Others	15
Facilities	23
Grants-in-Aid for Scientific Research	287
TOTAL	3,037

Expense

Category	(millions of yen)
Salaries	1,107
Others	1,643
Education and research	457
Joint use	691
General management costs	472
Facilities	23
Grants-in-Aid for Scientific Research	287
TOTAL	3,037

Note: These figures are from the revised budget.

FY2018

Category	(millions of yen)
Management Expenses Grants	2,510
Foundation	2,281
Special factors	229
Revenue	40
Admission fee	26
Others	14
TOTAL	2,550

Category	(millions of yen)
Salaries	1,129
Others	1,421
Education and research	318
Joint use	654
General management costs	449
Facilities	0
TOTAL	2,550

Note: These figures are from the annual budget.

Facilities

The Basic Concept of the Museum Design

The Museum consists of low-rise buildings which naturally blend with the surrounding park environment. In designing the buildings, special emphasis was placed on the aesthetics of traditional Japanese architecture. Each floor of the Museum's main building is composed of several blocks. While the outer walls of these blocks have no openings for natural lighting, plenty of light is let in through the inner courtyards (patios). The patios provide a sense of openness and connection with the outer world, and are also used as open-air exhibition space.

Each floor is designed to be dedicated to a specific purpose, namely, storage on the first floor, exhibitions on the second, and research on the third and fourth. Elevators and staircases provide direct access to these floors. As the route is laid out in a manner that allows for a circular trip, visitors can either go through all the exhibitions, or choose to visit certain exhibitions of interest.

In addition, in order to make the Museum barrier-free and universally accessible, changes such as the installation of Braille labels are ongoing.

Total area of grounds: 40,821 m²
Ground area occupied by the museum buildings: 18,177 m²
Total floor space: 52,648 m²

Fourth Floor 7,207 m²

Offices of research staff members, laboratories, library stacks, and storage area.

Second Floor 16,830 m²

Exhibition halls, patio, central patio, multifunctional terminal room, administration offices, Special Exhibition hall and auditorium (seating capacity for 462 persons).

Third Floor 7,340 m²

The library, library stacks, audio-visual monitoring room and storage areas.

Ground Floor 17,410 m²

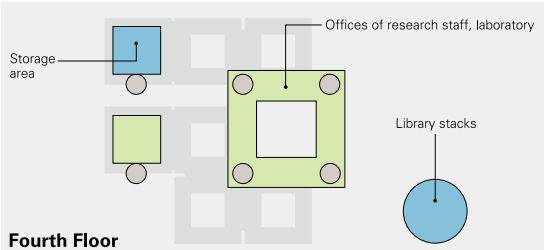
Entrance hall, central patio, restaurant, Special Exhibition hall, storage area and museum shop.

Rooftop 846 m²

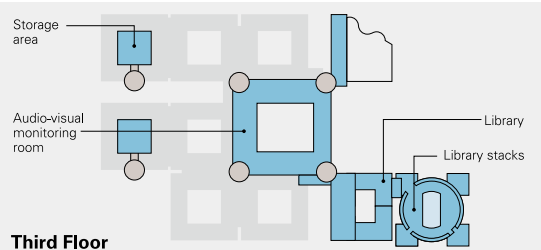
Basement 3,015 m²

Main Exhibition Halls 10,938 m²

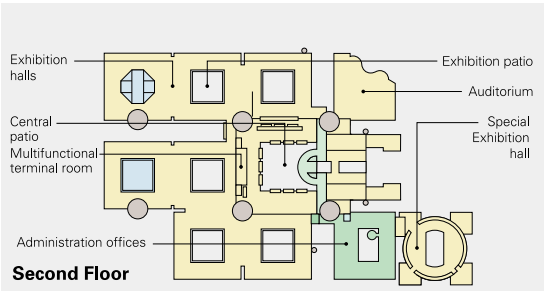
Special Exhibition Halls Ground Floor 851 m²
Second Floor 639 m²



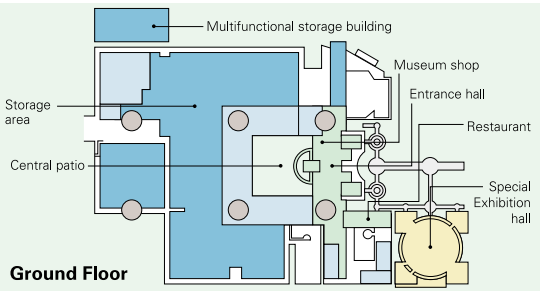
Fourth Floor



Third Floor



Second Floor



Ground Floor



Minpaku Special Research Projects

Minpaku Special Research Projects are international joint researches implemented with a solution-focused approach to tackle urgent challenges facing our contemporary civilization. The Research started in fiscal year 2016 and will continue for the six years of the third mid-term objective period, under the umbrella theme of “Contemporary Civilization and the Future of Humanity: Environment, Culture and Humans.”

The Western civilization constructed with sciences, technologies, politico-economic systems, social organization, and ideologies that originated in modern Europe has been believed to influence many other countries and areas of the world. Likewise, scientific and technological developments have been believed to enrich the human lives and societies. However, we can also argue that the price for this civilization in the form of population explosion, environmental destruction, war, resource depletion, water shortage, air pollution, and more. This has been a huge burden on human societies. Environmental destruction and population explosion are major challenges that need to be resolved. The former is apparent in all aspects of human life, from living space, to food supply and biodiversity to wars, pollution, global warming and disasters. Population explosion is a two-sided problem: the world’s population will exceed 10 billion in 2060 and approach the Earth’s environmental carrying capacity of 12 billion in 2100. In developed nations, fewer births and aging population have brought about significant difficulties in the sustenance and survival of families and human groups. Against this backdrop, we position the Special Research as research focusing on the analyses of, and solutions to, challenges faced by contemporary human societies. It is necessary to, hypothesize cultural phenomena that way directly and indirectly cause global-scale changes in environmental problems and the world’s population, and to rethink contemporary civilization from the point of view of ‘wisdom’ of local communities that have responded to the civilizations. The aim is to answer the question on how we could create, from the conventional (traditional) set of values, a society that guarantees the coexistence of multiple sets of values and to present a vision of a future focused on the solutions of the problems that the human societies can select, by approaching the research subject as a contemporary system of problems in the multi-tier living space comprising the global space, community space, and societal space.

Project Leader	Project Title	Project Period
IKEYA Kazunobu KISHIGAMI Nobuhiro	Historical Ecology of Biocultural Diversity: Use and Conservation of Endangered Animals, Plants, and Habitats	July 2016-March 2019
NOBAYASHI Atsushi	Human and Natural History on System of Food Production	April 2017-March 2020

International Symposium
“Human Relations with Animals and Plants: Perspectives of Historical Ecology”
Date March 19, 2018 - March 21, 2018
Project Leader IKEYA Kazunobu, KISHIGAMI Nobuhiro
The total number of participants 134

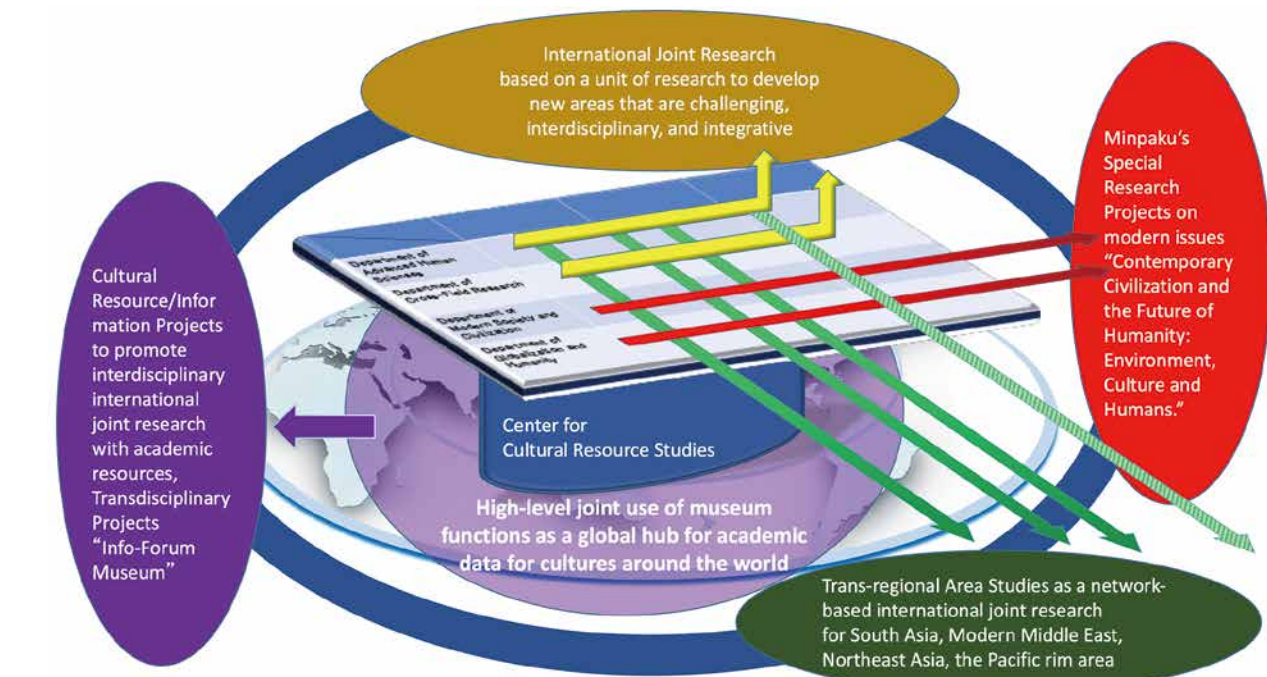


International Symposium “Human Relations with Animals and Plants: Perspectives of Historical Ecology”

Public Lecture
“Dish and human beings - Rethinking mature society throughout food”
Date November 17, 2017
Project Leader NOBAYASHI Atsushi
The total number of participants 407



Public Lecture “Dish and human beings - Rethinking mature society throughout food”



List of Minpaku Special Research Projects FY2016-FY2021

Umbrella Theme: Contemporary Civilization and the Future of Humanity: Environment, Culture and Humans

Theme Category: Environment

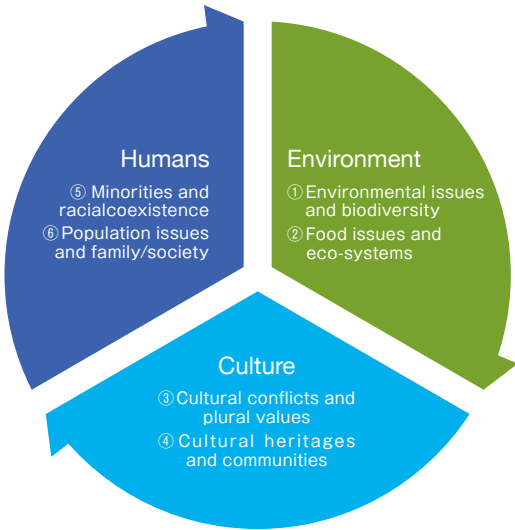
Project Leader	Project Title	Project Period
IKEYA Kazunobu KISHIGAMI Nobuhiro	Historical Ecology of Biocultural Diversity: Use and Conservation of Endangered Animals, Plants, and Habitats	July 2016-March 2019
NOBAYASHI Atsushi	Human and natural history on system of food production	April 2017-March 2020

Theme Category: Culture

Project Leader	Project Title	Project Period
NISHIO Tetsuo	Towards co-creating a pluralistic and multi-valued society in the Age of the Globalized Cultural Conflicts (tentative)	April 2020-March 2023
SEKI Yuji	Globalization of the Cultural Heritage and Revitalization of Local Communities	April 2019-March 2022

Theme Category: Humans

Project Leader	Project Title	Project Period
TERADA Yoshitaka	Performing Arts and Conviviality	April 2018-March 2021
HAYASHI Isao	Demographic changes and local sociocultural sustainabilities	April 2021-March 2024



Info-Forum Museum for Cultural Resources of the World
(Instituted Project of the National Institutes for the Humanities Transdisciplinary Projects)

The Museum has been devoted to research on peoples, cultures and societies, and has been collecting diverse tangible and intangible ethno-cultural materials and information worldwide. The staff of the Museum has been working collaboratively with other research institutes, universities, museums, and local societies, both in Japan and around the world, to conduct international collaborative research based on artifacts and related information. The Museum considers it vital to share such materials and information in this era, as “cultural resources of the world,” and hopes to pass them on to future generations. Therefore, “Info-Forum Museum” has been created as a digital databank for global use. It distributes, exchanges, creates, and shares information related to cultural resources of the world. Through this Info-Forum Museum, the staff of the Museum wishes to facilitate mutual communication with both researchers and source communities that originally created the cultural resources. During 2017, the fourth year of this program, four new projects for database establishment, and seven new projects for database improvement were added, bringing the total number of projects to eleven. This is one of the instituted project of the NIHU Transdisciplinary Projects.

Projects of Info-Forum Museum for Cultural Resources of the World

Project Leader	Project Title*	Category	Period
ITO Atsunori	Documenting and Sharing Information on Ethnological Materials: Working with Native American Tribes	project for database establishment	June 2014-March 2018
NOBAYASHI Atsushi	The Ecological Adaptation of Material Culture in Taiwan and Neighboring Islands	project for database establishment	April 2015-March 2019
SAITO Reiko	Re-examination and Documentation of the Ainu Collection at Minpaku	project for database establishment	April 2016-March 2020
IIDA Taku	Building a Multilingual and Interactive Database for the Africa Collection	project for database establishment	April 2017 - March 2021
KISHIGAMI Nobuhiro	A Study of Database Construction for the Cultural Resources of Indigenous Peoples in Northern North America, with a Focus on the Minpaku Collection	project for database improvement	January 2016-December 2017
YOKOYAMA Hiroko	Building an Info-Forum Museum for Regional Cultures of China	project for database improvement	April 2016-March 2018
IIDA Taku	Study and Publication of Historical Trails of the Japanese Society for Ethnology's Collection	project for database improvement	April 2016-March 2018
FUKUOKA Shota	Building an Info-Forum Museum for Musical Instruments	project for database improvement	April 2016-March 2018
HIDAKA Shingo	Information Disclosure Project for Documents Related to the Japanese Culture Exhibition at Minpaku	project for database improvement	April 2016-March 2018
NISHIO Tetsuo	An Info-Forum Database for Popular Culture Collections from the Middle East	project for database improvement	April 2017 - March 2019
OTA Shimpei	A Japan-US Joint Study to Enrich and Connect Korean Collections Databases	project for database improvement	April 2017 - March 2020

*Implemented in FY2017

Project Category

1.Project for Database Establishment

The aim of the project is to share information related to cultural resources under the supervision of a project leader and in cooperation with partner organizations at home and abroad, and to thereby to further international joint research to produce contents for the database. The database contents will be considered on a project basis, for example, by including multimedia contents, such as images and voices, as for non-common items.

2.Project for Database Improvement

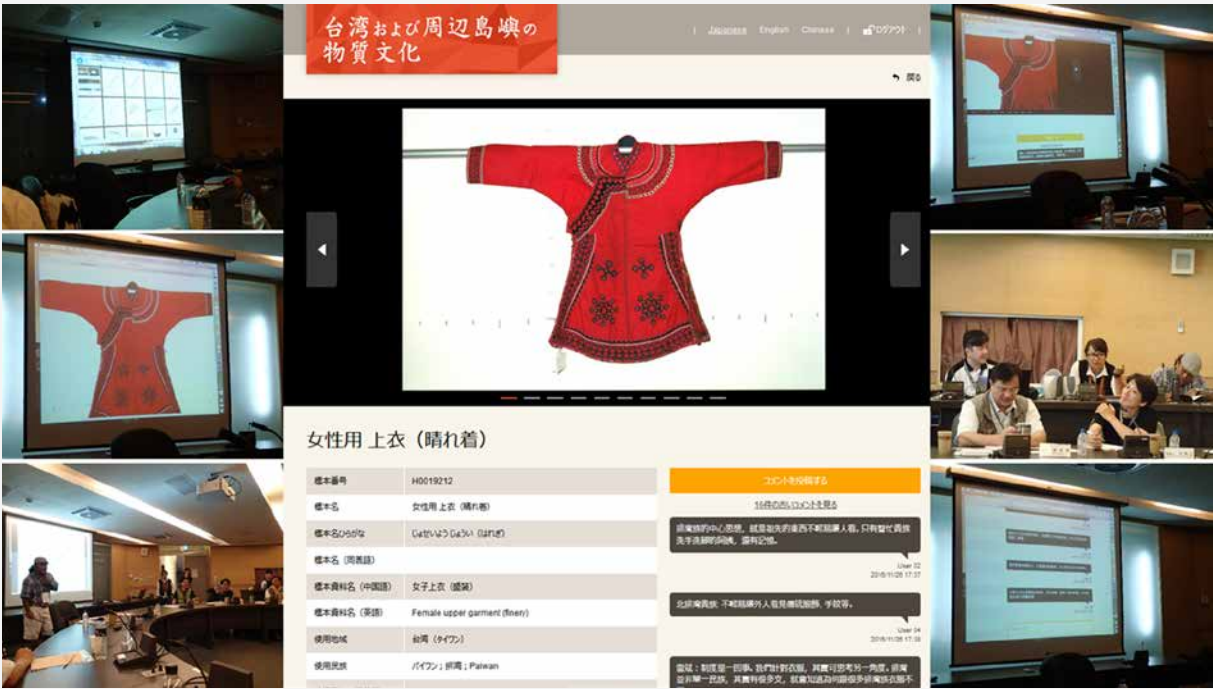
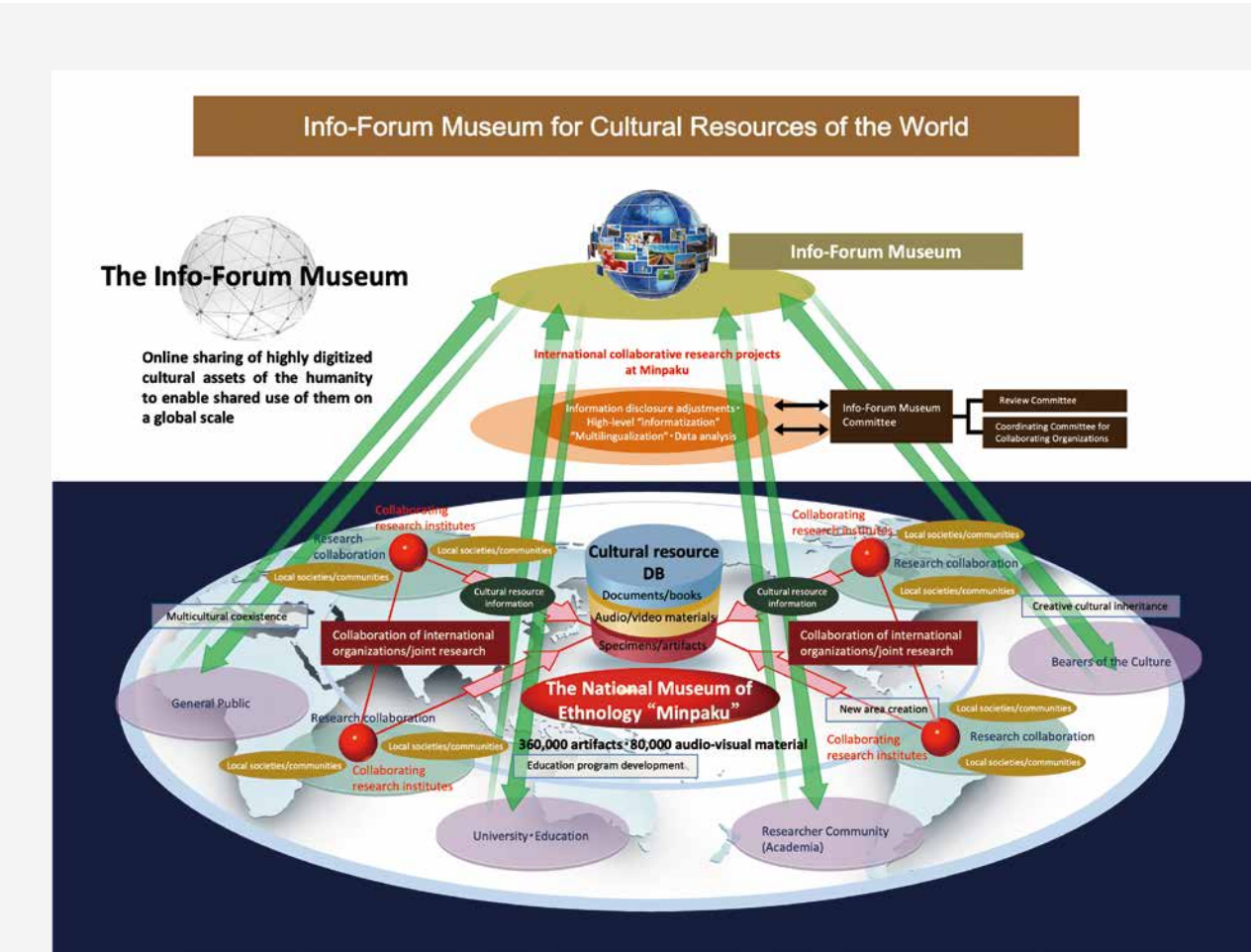
The aim of the project is to organize Minpaku's existing data related to cultural resources and to add new data, thereby improving the database through refinement.



International Workshop “Reconnecting Archaeological Materials with Descendant & Source Communities: Collections Review, Field Trip, Art Work Creation, and Exhibition Planning”



International Workshop “Reconnecting Source Communities with Museums for Education: Revitalizing Hopi Silversmithing Traditions”



Project for Database Establishment “The Ecological Adaptation of Material Culture in Taiwan and Neighboring Islands” Village Meeting in Taiwan

Inter-University Research Projects

These projects are conducted jointly by scholars of the Museum and outside organizations. This year, projects are being jointly undertaken by the Museum scholars and 180 scholars from national universities, 15 scholars from prefectural and municipal universities, 151 scholars from private universities, and 113 experts from other organizations.

FY2017 Research Theme

○ Projects undertaken outside Minpaku

General Research

Coordinator	Research Theme	Research Period
Project 1: Extensive research that encompasses cultural anthropology, ethnology and other related academic fields		
○ NAKAO Katsumi	Relation of Nation-States with Knowledge of Anthropology and Folklore: Nationalism and Intelligence in the Former Half of Twentieth Century	2017.10–2021.3
○ NAKAGAWA Satoshi	Naturalising Cultural Anthropology	2017.10–2021.3
○ TANUMA Sachiko	Morality within Neoliberalism	2017.10–2021.3
KISHIGAMI Nobuhiro	Whaling and Environmental Ethics	2016.10–2020.3
UDA Shuhei	Alternative Domestication: Anthropological Study of Domestication and Cultivation	2016.10–2019.3
DEGUCHI Masayuki	Cross-fertilization Between Accounting and Anthropology	2016.10–2019.3
HIROSE Koujirou	Reconsideration of Concept of “Disability”: Creating a New Definition of “Reasonable Accommodation” Based on Tactile Culture	2016.10–2019.3
○ NOZAWA Toyoichi	In Search of Interacting Musicking Body: An Interdisciplinary Approach	2016.10–2020.3
○ UKIGAYA Sachiyo	Anthropological Study of Reconstructing End-of-Life Care Culture in Contemporary Japan	2016.10–2020.3
MATSUO Mizuho	A Comparative Study on Social Constellation of Bodily Substances in a Globalized World	2015.10–2020.3
YAMANAKA Yuriko	The Marvelous and Uncanny: Comparative Study of the Imaginary	2015.10–2019.3
NIWA Norio	The Anthropology of Support: Comparative Ethnographic Studies of Altruism in Politics, Sports, and Fan Culture	2015.10–2019.3
○ ERTL, John	Ethnography of Archaeology: Diversity in the Production, Utilization, and Transformation of Archaeological Knowledge	2015.10–2019.3
○ OKADA Hiroki	A Study on Cultural Anthropological Approaches to Space Exploration	2015.10–2019.3
○ NAKAHARA Satoe	Interdisciplinary Studies of Radiation Effects on the Everyday Life of Victims	2015.10–2019.3
○ IIDA Junko	A Collaborative Project on Medical Anthropology Education for Health Professionals	2015.10–2019.3
○ SAITO Tsuyoshi	A Study of Individual-Based Worlds: Dynamism of Movings and Encounters in the Middle East	2015.10–2019.3
○ ICHINOSAWA Jumpei	Anthropology of Stochastic Phenomenon and Uncertainty: Description of a World Resistant to the “Risk Society”	2015.10–2019.3
UEBA Yoko	A Study of Contemporary “Handiwork” Culture	2014.10–2018.3
○ OTA Yoshinobu	Political Classification: Rethinking Ethnicity and Race from the Perspectives of the Colonized	2014.10–2018.3
○ KAWADA Makito	The Contemporary Phase of Magical “Practice-knowledge”: Focusing on the Relationship between Magical and Other Kinds of “Practice-knowledge”	2014.10–2018.3
SAITO Akira	Early Modern Catholic Global Missions and Cultural Accommodation	2014.10–2018.3
○ HASEGAWA Kiyoshi	“History”as a Resource: through the Analysis of Ethnic Groups in South China.	2014.10–2018.3
MORI Akiko	An Anthropological Study on the Flexible Interface of Family with Society: The (De)Institutionalization of Parenting Service and Nursing Care	2014.10–2018.3

Coordinator	Research Theme	Research Period
Project 2: Research on items or materials held in the Minpaku collection		
SONODA Naoko	Conservation Science Research on the Establishment of Sustainable Collection Management and Museum Environment	2017.10–2021.3
IKEYA Kazunobu	Anthropological Study of Beads in the World	2016.10– 2018.3
○ NAWATA Hiroshi	Comparative Studies of Afro-Eurasian Material Culture from the Perspective of Moving Strategies in Desert Societies	2016.10–2020.3
NAGANO Yasuhiko	Descriptive Study of Tibetan Charms and Amulets with Nyingmapa and Bon	2015.10–2019.3
○ KORESAWA Hiroaki	An Interdisciplinary Study of Children’s Culture and Society from the Viewpoint of Their Artifacts in Modern Japan	2014.10–2018.3

Young Researchers

Coordinator	Research Theme	Research Period
Project 1: Extensive research that encompasses cultural anthropology, ethnology and other related academic fields		
YAGI Yuriko	A Study of Religion in Contemporary World through the Things	2017.10–2020.3
○ OISHI Takanori	Applied Anthropology of Game Meat Distribution and Consumption: New Perspectives on Hunting for a Post-industrial World	2016.10–2019.3
○ HIRATA Akiko	Interdisciplinary Study of Physical Techniques Using Technology	2016.10–2019.3
Project 2: Research on Items or Materials Held in the Minpaku Collection		
○ GOYA Junko	A Study on the Utilization of Museum Materials in Higher Educational Institutions	2015.10–2018.3

Public Presentation of Joint Research Results

Since FY2004, some of the Joint Research Project meetings have been made open to the general public. In FY2017 the following projects were hosted.

Date	Title	Venue
June 24, 2017	Cross-fertilization Between Accounting and Anthropology	The National Museum of Ethnology
July 29, 2017	Applied Anthropology of Game Meat Distribution and Consumption: New Perspectives on Hunting for a Post-industrial World	The National Museum of Ethnology
October 21, 2017	Cross-fertilization Between Accounting and Anthropology	The National Museum of Ethnology
November 3, 2017	The Marvelous and Uncanny: Comparative Study of the Imaginary	Keio University
November 25, 2017	Interdisciplinary Study of Physical Techniques Using Technology	The National Museum of Ethnology
December 25, 2017	Cross-fertilization Between Accounting and Anthropology	The National Museum of Ethnology
January 27, 2018	In Search of Interacting Musicking Body: An Interdisciplinary Approach	The National Museum of Ethnology
February 12, 2016	Whaling and Environmental Ethics	The National Museum of Ethnology
February 25, 2016	Cross-fertilization Between Accounting and Anthropology	The National Museum of Ethnology

JSPS Grants-in-Aid for Scientific Research

Grants-in-Aid for Scientific Research provided by the Japan Society for the Promotion of Science are intended to foster the progress of unique and pioneering research projects in all fields ranging from the human and social sciences to the natural sciences, in order to promote academic activities in our country. The aid is awarded to research projects which are especially important in terms of current academic trends, organized on the initiative of individual researchers or research groups in academic institutions.

FY2018 Projects Funded

Category	Head	Research Subject	(thousands of yen)
Grant-in-Aid for Scientific Research on Innovative Areas			
Continued	SUZUKI Motoi	Indigenous Cultures in Latin American Countries from the Colonial Period to the Present	6,240
Continued	NOBAYASHI Atsushi	Anthropological Study on Cultural and Behavioral Change through Dispersal and Contact of Human Populations	24,050
Total			30,290

Grant-in-Aid for Scientific Research on Innovative Areas – Platforms for Advanced Technologies and Research Resources			
Continued	YOSHIDA Kenji	Platform for Integration and Sophistication of Image Information on Area Studies	39,000
Total			39,000

Fund for the Promotion of Joint International Research (Fostering Joint International Research)			
Continued	*1 ITO Atsunori	Source Community Utilization of Ethnological Collections for Information Sharing in Japanese Museums (Fostering Joint International Research)	14,690
Continued	*2 TAKEMURA Yoshiaki	The Body Politics of Migration: Globalization of Indian Dance and Agencies	15,340
Total			30,030

*1 The figure for the project leader ITO Atsunori is the allocated budget for FY2016–2018.
*2 The figure for the project leader TAKEMURA Yoshiaki is the allocated budget for FY2018–2020.

Fund for the Promotion of Joint International Research (Fostering Joint International Research(B))			
New	KIKUSAWA Ritsuko	Integrating Language Change in Time and Space: Applying Geographical Information System (GIS) and Statistic Modelling to Historical Linguistics	2,080
Total			2,080

Grant-in-Aid for Scientific Research (A)			
Continued	SUDO Ken'ichi	Museology for Museum Networking	8,320
Continued	YOSHIDA Kenji	Anthropological Research on Relationships between Cultural Heritage and Communal Identity in Africa	6,500
Continued	SAITO Akira	Colonial Modernity in the Andes: A Comprehensive Study of the Viceroy Toledo's General Resettlement	6,240
Continued	KISHIGAMI Nobuhiro	An Anthropological Study of Whaling Cultures in the Globalizing World: Conflicts between the Succession of Whaling Tradition and Anti-whaling Movement	7,930
Continued	NAGANO Yasuhiko	International Field Linguistic Survey of the Tibeto-Burman Link-languages	11,830
Continued	SEKI Yuji	Study of the Foundations of Power in Andean Civilization through Analysis of the Construction of Social Memory	10,270
Continued	KONAGAYA Yuki	Reframing Images of Mongolia: Photographic Records from the 19th Century to Early 20th Century	8,370
New	YAMANAKA Yuriko	The Natural and the Supernatural in Comparative Perspective	10,270
New	HAYASHI Isao	Materializing and Narrating Collective Memories of Calamities and Education for Disaster Reduction	8,320
Total			78,050

Grant-in-Aid for Scientific Research (B)			
Continued	MINAMI Makito	Disaster Ethnographical Study of Reconfiguration of Societies after the 2015 Nepal Gorkha Earthquake	4,290
Continued	NISHIO Tetsuo	The Process of Resourcing Popular Culture and the Re-globalization of the Public Communication Sphere in the Contemporary Middle East	3,640
Continued	NISHIO Tetsuo	Narrative Informatic Studies of the Story of Sindbad the Sailor: the Emergence and Formation of Literary Function to Co-create a Pluralistic and Multi-valued Society	3,120
Continued	MATTHHEWS,Peter J.	Mapping Genetic Diversity in Taro (C. Esculenta) to Test Domestication Models	4,680
New	HIDAKA Shingo	Utilization and Conservation of Regional Heritage as Resources for Education or Tourism	10,270
New	SONODA Naoko	Development of Mass-strengthening Treatment of Weakened Acidic Paper Documents by Cellulose Nanofiber Coating	7,800
Total			33,800

Grant-in-Aid for Scientific Research (C)			
Continued	SASAHARA Ryoji	The Folk Performing Arts of Islands and Archipelagoes around Honshu	780
Continued	UDA Shuhei	Cormorant Fishing Culture and Re-balance Theory in the Post-domesticity: Construction and Development of New Human-animal Relationships	1,040
Continued	FUJIMOTO Toko	Anthropological Study on Traditional Medicine and Islam in Kazakhstan	1,040
Continued	TAKEMURA Yoshiaki	Contribution of Sri Lankan Tamil to the Evolution and Re-reconstruction of Indian Dance: A Relational and Holistic Approach	1,560
Continued	NISHI Kayo	United States Navy Study on Downwinders in Guam in the 1950s	260
Continued	MURAO Seiji	Visual Anthropology in the Digital Age: Towards New Visual Ethnography	1,170
Continued	SUGIMOTO Atushi	Pastoral Changes under CAP in a Transylvanian Mountain Village	910
Continued	NAGATA Atsumasa	Anthropological Research on Social Relationship Building among Japanese Residents, Korean Immigrants, and Filipino Migrants at Higashikujo in Kyoto	1,040
Continued	ARAMOTO Mariko	Anthropological Study on Changes in the Views of Pollution through the Introduction of Sanitary Goods	1,300
Continued	ITO Satoru	Anthropological Study on Poetic Orality: Its Continuity and Creative Practice in Tai Society of Southwest China	2,080
New	HIROSE Kojiro	Creating a Theory of Tactile Learning:How the Visually-impaired Can Form the Image of Outdoor Space	1,820
New	NAKAMICHI Shizuka	The Thousand and One Nights from Manuscript to Print: Textual and Historical Studies	650
New	MORI Keiko	The Development of Women's Religious Authority in the Niassene Tijaniyya, Senegal	1,560
New	KAWASE Itsushi	The Applied Anthropological Study on the Ethnographic Filmmaking on Intangible Cultures in Africa	1,300
New	FUKUOKA Shota	Approaching Transmission of Performing Arts in Island Societies through Documentation Video as a Site for Interaction and Discovery	1,560
New	HIRAI Kyonosuke	An Anthropological Study of the Genesis of 'Negative Heritage' in the Post-Conflict Era of Minamata City	780
New	SUZUKI Nanami	Development of Lifelong Learning Sharing Life Stories of Older Adults with Dementia by Intergenerational Collaboration in the US	1,040
Total			19,890

Category	Head	Research Subject	(thousands of yen)
Grant-in-Aid for Young Scientists (A)			
Continued	YOSHIOKA Noboru	Descriptive Linguistics for Northern Pakistan Languages	2,860
Continued	SUEMORI Kaori	Multifaceted Studies on Techniques of Mural Painting at Buddhist Grottoes in Gansu, China	1,300
Continued	SUZUKI Hiroyuki	Investigation of Undescribed Langauges in the Eastern Tibetosphere and Their Geolinguistic Research	2,860
Total			7,020

Grant-in-Aid for Young Scientists (B)			
Continued	MATSUO Mizuho	Anthropological Study on the Social Constellation of Genetics in Contemporary India	260
Continued	NOBORI Kukiko	Art Makes Society: An Anthropological Study of "Socially Engaged Art"	1,170
Continued	AISHIMA Hatsuki	A Social Anthropological Study of Globalization and Karate-ka's Practice of Nation in Contemporary Egypt	1,040
Continued	YAGI Yuriko	An Anthropological Study on the Development of the Cult of Saint in Andes	1,170
Continued	KURIYAMA Shinya	Social Relations, Values, Feelings Drawn by the Sanshin: A Study of the Effects Popular Musical Instruments Bring to People	780
Continued	SUZUKI Hideaki	Study on "Manumission Papers" in the Early 20th Century Persian Gulf	1,040
Total			5,460

Grant-in-Aid for Young Scientists			
New	KURODA Kenji	An Anthropological Approach to the Military Interventions and Transformation of the Martyrdom Discourse in Iran under the Islamic Republic	1,300
New	HO Uketsu	Anthropological Study of Resource-getting Behaviors among Hunter-gatherers in Forest of Tropical Africa	1,950
New	HAGIWARA Takuya	Potentiality for Coexistence Based on Corporeal Experience: A Case Study of Competitive Athletes in Kenya	780
New	KAMINO Chie	Modern Changes of House Purifying Performing Arts in Japan and Korea: Mainly Focused on Japanese Ise-daikagura and Korean Nong-ak	1,430
Total			5,460

Grant-in-Aid for Challenging Exploratory Research			
Continued	SAGARA Keiko	Historical Changes in Japanese Sign Language and Taiwan Sign Language: Applying Historical-sociolinguistic Methods to Sign Language	650
Total			650

Grant-in-Aid for Challenging Research (Pioneering)			
Continued	DEGUCHI Masayuki	Interdisciplinary Research on Standardization of Individual Cultures between Anthropology and Accounting	6,240
Total			6,240

Grant-in-Aid for Challenging Research (Exploratory)			
New	TAKEZAWA Shoichiro	A Comprehensive Survey of the Post-Disaster Society	3,250
New	KANDA Kazuyuki	Verification of Constituents in New Sign Linguistics	1,820
Total			5,070

Grant-in-Aid for Research Activity start-up			
Continued	HAYAKAWA Mayu	An Anthropological Study of Quantification and Local Accountability: The case of Africa	1,300
New	FURUKAWA Fukachi	Anthropological Study on the Development of Transport Infrastructure and the Moving Bodies in Eastern Himalaya	1,300
New	OSAWA Yoshimi	Perceptions of Food and Their Transformation: MSG Consumption and Rejection	1,430
Total			4,030

Grant-in-Aid for Publication of Scientific Research Results (Scientific Literature)			
New	NAGANO Yasuhiko	A Reference Grammar of the rGyalrong Language–Bhola Dialect	1,700
New	TAKAGI Hitoshi	Ethnography of Human and Sea Turtles–Commercial Fishing of Miskito Indians–	1,100
New	YAMAMOTO Norio	The Tropical Highlands of the World and their Cultures	1,700

Grant-in-Aid for Publication of Scientific Research Results (Databases)			
Continues	TAKAHASHI Haruko	Clothing Culture Digital Archives	5,500
New	KUBO Masatoshi	Gran-in-Aid for Publication of Scientific Research Results (Databases)	3,800
Total			13,800

Grant-in-Aid for JSPS Fellows			
Continued	ANNEN Maiko	Marketization of Education and Transformations of Life-worlds in Nepal	1,040
Continued	UEHATA Humi	Study of Cultural Relationship between Pop-folk and Folk Music in Serbia	1,430
Continued	FUJII Shin'ichi	Anthropological Research on Peace-Building and Peace Keeping through Gift Exchange in Solomon Islands	1,430
Continued	SUZUKI Kohei	Systematic Understandings of Sustainable Grassland Use and Its Practices in Eurasian Steppe	1,430
Continued	TAMURA Takuya	A Study on the Formation and Utilization of Fishing Ground in the Maritime Village of Kenya	1,170
New	MATSUOKA Sachi	Roles of Residential Religious Insutitutions for Elderly People: A Case Study in Southern India	1,430
Total			7,930

Digital Picture Library for Area Studies (DiPLAS)

The project targets ongoing Grants-in-Aid for Scientific Research projects on area studies and aims to provide technical support for the digitalization and sharing of accumulated image materials, if it can make a great contribution and promote meaningful development in research. One important intention is the development of “Digital Picture Library for Area Studies,” a database of photographs and videos related to the academic work of Japanese researchers at home and abroad, and to produce a platform that is beneficial to the further development of area studies. The project is being promoted in partnership with the Center for Southeast Asian Studies, Kyoto University, Research Institute for Languages and Cultures of Asia and Africa, Tokyo University of Foreign Studies, Institute for Advanced Studies of Asia, The University of Tokyo, and National Institute of Informatics, with the National Museum of Ethnology as the core organization.



Contract Research Projects FY2017

Head	Contractor	Research Theme	(thousands of yen)
NOBAYASHI Atsushi	Ministry of Culture,Taiwan	Under the Spotlight Taiwan Project - Food and bevarage in Taiwan -	771
MORI Akiko	Japan Society for the Promotion of Science (Surveys and studies of science promotion policies and scientific research trends)	Science promotion policies and scientific research trends in the field of cultural anthropology and folklore anthropological research on the problems of the modern world	1,690
MATSUO Mizuho	Japan Society for the Promotion of Science (Bilateral Joint Research Projects/Seminars)	The Construction of Caste in Modern Maharashtra	1,152
Total			3,613

Research Donations FY2017

Name of the Donation	Head	Donor	(thousands of yen)
The Resona Foundation for Asia and Oceania	KIKUSAWA Ritsuko	KIKUSAWA Ritsuko	1,000
Sumitomo Life Insurance Company Child raising project to empower the future Sumisei Woman Researcher Encouragement Prizes	INOIE Haruko	INOIE Haruko	1,000
Shibusawa Foundation for Ethnological Studies	HAYAKAWA Mayu	HAYAKAWA Mayu	200
Donation of Shung-Ye Museum of Formosan Aborigines	NOBAYASHI Atsushi	Shung-Ye Museum of Formosan Aborigines	2,800
The Japanese Association for Canadian Studies (JACS) Annual Conference Operation Grant	KISHIGAMI Nobuhiro	Japanese Association for Canadian Studies	200
Takanashi Research Fellowships for Young Researchers	SHOJI Kazuho	SHOJI Kazuho	450
Japan Science Society (JSS) Grants for Overseas Presentation	YAGI Yuriko	YAGI Yuriko	270
Shibusawa Foundation for Ethnological Studies	ITOU Nagisa	ITOU Nagisa	500
The National Museum of Ethnology (Minpaku) Activity Grant	National Museum of Ethnology	IKARI SHODOKU CO.,Ltd	50
The National Museum of Ethnology (Minpaku) Activity Grant	National Museum of Ethnology	RITSUMEIKAN University	20
The National Museum of Ethnology (Minpaku) Activity Grant	National Museum of Ethnology	OGAWA Fumihiko	100
The National Museum of Ethnology (Minpaku) Activity Grant	National Museum of Ethnology	KOBE SHINWA WOMEN'S University	10
The National Museum of Ethnology (Minpaku) Activity Grant	National Museum of Ethnology	KANAGAWA University	30
The National Museum of Ethnology (Minpaku) Activity Grant	National Museum of Ethnology	SHIBATA Hitoshi	10
The National Museum of Ethnology (Minpaku) Activity Grant	National Museum of Ethnology	RYUKOKU University	10
The National Museum of Ethnology (Minpaku) Activity Grant	National Museum of Ethnology	RYUKOKU University	30
Research Grant	SHOJI Kazuho	SHOJI Kazuho	108
Total			6,788

Sigh Language Linguistics Research Section (SiLLR) FY2017

The section was established to promote sign language linguistics research and outreach activities for the dissemination of research outcomes to universities and society, as well as to build a foundation to promote collaborative research among hearing-impaired researchers through the training sign-language interpreters. Presently, 11 staff members, one of whom holds two posts, 3 full-time, 4 administrative assistants, 2 Japanese visiting researchers and one visiting researcher (of whom, 3 are deaf persons), engage in sign language linguistics research, interpreter training, social publicity, outreach activities, and planning for language-related exhibitions (including sign language).

Name of grant	Grantor	Period	(thousands of yen)
Research in Sign Language Linguistics as Promoted by the Sign Language Linguistics Research Section (SiLLR)	The Nippon Foundation	2017.4~2018.3	37,000

Projects Concerning / Cultural Resources and Information

Cultural Resource Projects/Information Projects

“Cultural Resource Projects/Information Projects” are based on proposals, and led by our full-time research staff. The aim is to organize and digitize cultural resources held by the Museum and related organizations such as universities, in order to promote their shared use and academic value. The “Cultural Resource Projects” are undertaken in the four areas of survey and collection, artifact management, exhibition, and museum-community alliance. The “Information Projects” are undertaken in the two areas of information gathering, and digitization.

FY2018 List of Cultural Resource Projects

Area	Proposed by	Project Name
Survey and Collection Project	TERADA Yoshitaka	Purchase of Kalighat Folk Paintings from East India
Exhibition Development Project	NOBAYASHI Atsushi	Special Exhibition “A ‘Tower of the Sun’ Collection: Expo ’70 Ethnological Mission”
Exhibition Development Project	HIDAKA Shingo	Special Exhibition “Transmitting Art and Craft– Japanese Industrial Design Originating in Tohoku”
Exhibition Development Project	SASAHARA Ryoji	Special Exhibition “Toys Expo– Children in Modern Japan”
Exhibition Development Project	SUZUKI Nanami	Thematic Exhibition “The World of Amish Quilts: Seeking Ways of Living, Weaving the World”
Exhibition Development Project	TERADA Yoshitaka	Thematic Exhibition “Traveling Music: The String Instruments of South Asia”
Exhibition Development Project	IKEYA Kazunobu	Traveling Exhibition “Beads in the World”
Exhibition Development Project	IKEYA Kazunobu	The Collection of the National Museum of Ethnology – Shell Road
Exhibition Development Project	IKEYA Kazunobu	Beads in the World
Exhibition Development Project	YAMANAKA Yuriko	Special Exhibition “The Museum of Super Natural History” (tentative title)
Exhibition Development Project	KIKUSAWA Ritsuko	Preparation for the “Talking <i>Homo Sapiens</i> ” (tentative title) Exhibit
Exhibition Development Project	NISHIO Tetsuo	Exhibition of the Desert Life of Muslim Women and its Change over a Half-century
Museum Community Alliance Project	NOBUTA Toshihiro	Practical Study of Model Construction for Use the Museum for People with Intellectual Disabilities

FY2018 List of Information Projects

Area	Proposed by	Project Name
Research and Collection Project	MISHIMA Teiko	Minpaku Ethnographic Film Production (<i>Soninke</i> Ethnic Culture Festival)
Research and Collection Project	YAMANAKA Yuriko	Production of National Museum of Ethnology Visual Ethnography “Sensing the Otherworld through Sound”
Research and Collection Project	KAWASE Itsushi	Production of the Visual Ethnography on “Ashenda”, the Strolling Performance by Tigray Women in Ethiopia
Research and Collection Project	MINAMI Makito	Making an Ethnographic Film on Musician Caste Gandharba in Nepal
Research and Collection Project	TERADA Yoshitaka	Production of the English and Korean Versions of the Film, <i>Over the Arirang Pass: Zainichi Korean Music Today</i>
Documentation and Database Project	SATO Koji	3DCG Digital Archives of the Indigenous Architecture

Cultural Resource Planning Projects/Information Planning Projects

“Cultural Resource Planning Projects/Information Planning Projects” are implemented continuously, or in a planned manner, to strengthen the Museum’s jointly used infrastructure. The “Cultural Resource Planning Projects” are undertaken in the three areas of artifact-related, exhibition, and museum-community alliance. The “Information Planning Projects” are undertaken in the two areas of video record production and digitization of exhibitions.

FY2018 List of Cultural Resource Planning Projects

Area	Implementation Manager	Project Name
Artifact Project	HIDAKA Shingo	Taking Pictures of Materials
Artifact Project	the Head of the Information Planning Section	Research Data Organization / Information Conversion and Usage Management
Artifact Project	HIDAKA Shingo	Research Data Organization / Information Conversion and Usage Management
Artifact Project	SONODA Naoko	Research on the Preservation and Management of Tangible Cultural Resources
Exhibition Development Project	the Head of the Information Planning Section	Improvement of “Design Intelligence – Find 25 years of the world and MINPAKU through special exhibitions”
Exhibition Development Project	SUZUKI Motoi	New Collection of Mexican Arte Popular
Exhibition Development Project	NIWA Norio	A Year-end and New Year Exhibition “The Zodiac Animal”
Community Alliance Project	KASHINAGA Masao	Support for Volunteer Activities
Community Alliance Project	KASHINAGA Masao	Workshop Hosting and Worksheet Exercises
Community Alliance Project	DEGUCHI Masayuki	Music day at Minpaku 2018
Community Alliance Project	KAWASE Itsushi	Min-pack “Costumes in Ethiopia”
Community Alliance Project	SAITO Reiko	Performance of the <i>Kamuynomi</i> Prayer Ceremony and Traditional Ainu Dances
Community Alliance Project	KASHINAGA Masao	Revision of the Min-pack

FY2018 List of Information Planning Projects

Area	Implementing Entity	Project Name
Project for Advancing Information on Exhibitions	MISHIMA Teiko	Production of Videothèque Programs (<i>Soninke</i> ethnic culture festival and two other programs)
Project for Video Production	Committee for Information Management	Making Videos of Special Exhibitions and Thematic Exhibitions
Project for Video Production	Committee for Information Management	Making Videos of Special Lectures and Performances

Individual Research Projects FY2018 Research Theme

Director-General

YOSHIDA Kenji Study of Creation, Transmission, and Representation of Culture:A Museum-anthropological Approach

Department of Advanced Human Sciences

IIZUMI Naoko Implementing Curricula for Training Academic Sign Language Interpreters and Their Evaluation

KAWASE Itsushi Exploring Anthropological Films that Mediate and Promote Communication

KIKUSAWA Ritsuko Application of the Geographic Information System (GIS) to the Historical Analyses of Fijian Languages

SAGARA Keiko Historical Changes in Japanese Sign Language and Taiwan Sign Language: Applying Historical-sociolinguistic Methods to Sign Language

SONODA Naoko Storage Re-organization for Sustainable Collection Management

DEGUCHI Masayuki Transformative Reasearches on the Third Sector Fieldwork to Cyberspace

HIDAKA Shingo Rediscovery of Regional Culture in the Japanese Archipelago and Construction of the Representational System

FUKUOKA Shota A Study on the Influences of Audiovisual Media on Traditional Performing Arts

MARUKAWA Yuzo The Informatics of Association and Information Services for Cultural Assets

YAGI Yuriko An Anthropological Study on Possession and Transmission of Religious Objects in Andean Area

YAMAMOTO Yasunori Relationship between Museum Objects, Information, and Exhibition

YOSHIOKA Noboru Descriptive Linguistics for Northern Pakistan Languages

Department of Cross-Field Research

UDAGAWA Taeko Reconsideration and Reconstruction of the Public and the Intimate

OTA Shimpei Integration and Variation of Socio-cultures in Korea

KASHINAGA Masao Scripts and Texts of the Tai Dam in Vietnam Cultural Anthropology of the Boxing in Southeast Asia

HAN Min Cross-field Research on Society, History and Symbols

KONAGAYA Yuki Reframing Images of Mongolia: Photographic Records from the 19th Century to Early 20th Century

SHINMEN Mitsuhiro Intellectuals under Socialist Regime in Romania

SUGASE Akiko Representation of Religious Identity among the East Mediterranean Arabs

NIWA Norio The Anthropology of Support: Altruism in Politics, Sports, and Fan Culture

MATTHEWS, Peter J. Mapping Genetic Diversity in Taro to Test Domestication Theories

Plant Genetic Resources and Related Traditional Knowledge in Semi-autonomous Ethnic Minority Areas with Political and Geographic Isolation

The Asaeda Toshio Collection: Construction of a Database with a Focus on Asaeda's Ethnographic Work in Oceania, an Info-forum Museum Project of the National Museum of Ethnology

MATSUO Mizuho A Study on Transformation of Reproduction and Bodily Substances in South Asia

Department of Modern Society and Civilization

IKEYA Kazunobu Global Environmental History of Hunter-Gatherers

UEBA Yoko An Ethno-Artistic Study of Handicraft Culture in Contemporary India

UDA Shuhei A Comparative Study of Cormorant Fishing Culture

SAITO Akira A Comprehensive Study of the Viceroy Toledo's General Resettlement in the Colonial Andes

SUZUKI Motoi The Outline of Contemporary Civilizations in Latin America

SEKI Yuji Studies on the Formation of Power in the Ancient Andes

TERAMURA Hirofumi Research on the Formation of Ancient Silk Road Cities and East West Exchange of People and Cultures

HIRAI Kyonosuke An Anthropological Study of the Genesis of 'Negative Heritage' in the Post-Conflict Era of Minamata City

FUJIMOTO Toko Anthropological Study on Society, Religion, and Traditional Medicine in Kazakhstan

Department of Globalization and Humanity

AISHIMA Hatsuki Aesthetics and Body Culture in Contemporary Egypt

KAWAI Hironao Anthropological Studies on Landscape and Foodscape

Multi-sited Works on the Hakka and Hakka Cultures in the Pacific Rim

SUZUKI Nanami Age-friendly Communities in Super Aged Societies: Seeking Diverse Options for Intergenerational Communication and Learning

SUZUKI Hideaki Coastal Swahili Society in World History

NISHIO Tetsuo Globalization and Popular Cultures in the Middle East

NOBUTA Toshihiro An Anthropological Study on Southeast Asian Culture

An Anthropological Study on Inclusive Society

HIROSE Koujirou An Anthropological Study of the Concept of Barrier-Free

MIO Minoru Anthropological Study on Transformation of Religion and Culture in Western India

MISHIMA Teiko An Anthropological Study of the Formation and Succession of African Traders' Wealth

MINAMI Makito Study of Reconfiguration of Societies after the 2015 Nepal Gorkha Earthquake

MORI Akiko An Anthropological Study on the Meaning of the Social and Its Universality Across Cultures

Center for Cultural Resource Studies

IIDA Taku Intangibility of Material Heritage and Materiality of Intangible Heritage in Africa

ITO Atsunori Research on the Collaborative Management of Native American Collections in Japanese Museums

KISHIGAMI Nobuhiro A Comparative Study of Current Status of Whaling Activities in Indigenous Societies of North America

SAITO Reiko Inheritance of Ainu Culture and Its Social Context

SASAHARA Ryoji The Various Aspects of a Toy and the Play of the Child as the Folk Culture

SATO Koji A Reconstruction of the History of Wooden-Houses in Southeast Asia

TERADA Yoshitaka Performing Arts and Conviviality

String Instruments of South Asia: Dissemination and Change

NOBAYASHI Atsushi Anthropology of Tools and Techniques for Getting Ecological Resources

HAYASHI Isao Mediums in Recollecting Disaster Experience Remains, Monuments, Narratives

YAMANAKA Yuriko Comparative Study of Marvels and the Uncanny: Human Imagination and the Natural World

Dissemination of Research Findings Note: Those with no venue cited were held in the Museum.

The Museum promotes active dissemination of research findings, via symposia, research forums, and participation of staff in international academic meetings using the “Research Results Presentation Program” under the Director-General's Leadership Program. Using various external funds, the Museum has conducted numerous symposia and forums in FY2017 (see below). For information about Minpaku Special Research Projects symposia and forums, please see p. 10.

Public Academic Lectures

The Museum organizes public academic lectures in Osaka and Tokyo. These facilitate cross-cultural understanding and help to increase public recognition of the Museum.

Public Lecture

“Dish and Human Beings – Rethinking Mature Society throughout Food”

Date November 17, 2017
Venue Nikkei Hall (Tokyo)
Lecturers NOBAYASHI Atsushi
NAKASHIMA Yasuhiro
UDAGAWA Taeko
Attendance 407
Co-host NIKKEI INC.



Public Lecture

“From Expo'70 to Minpaku”

Date March 23, 2018
Venue Oval Hall (Osaka)
Lecturers SUGASE Akiko
YOSHIDA Kenji
ISHIGE Naomichi
YANOBEKENJI
Attendance 349
Co-host Mainichi Newspapers



Symposia

International Symposium

“History and Current Situations of Indigenous Peoples in Canada”

Date September 9, 2017
Coordinator KISHIGAMI Nobuhiro
Participants 165



International Symposium

“Rediscovery of Local Culture: from the Perspective of Universities and Museums”

Date October 21-22, 2017
Coordinator HIDAKA Shingo
Participants 215



International Symposium

“Signed and Spoken Language Linguistics”

Date September 22-24, 2017
Coordinator KIKUSAWA Ritsuko
Participants 270



International Symposium

“Negotiation Intangible Cultural Heritage”

Date November 29-December 1, 2017
Coordinator FUKUOKA Shota
Participants 47



International Symposium

“Preservation of Cultural Heritage in a Changing World”

Date October 7-8, 2017
Coordinator SONODA Naoko
Participants 156



International Symposium

“Museums in the World 2017”

Date November 3, 2017
Coordinator SHIMMEN Mitsuhiro
Attendance 82



Publication of Research Results FY2017

Publications by the Museum

Bulletin of the National Museum of Ethnology

Vol. 42, No. 1	Articles TERAMURA Hirofumi, Digitization of Cultural Resources and Its Utilization Method Using Archaeological Information YAMANAKA Yuriko, Translating Material Culture: Multilingualization of Displays at the National Museum of Ethnology, Osaka
Vol. 42, No. 2	Articles UDA Shuhei, Why Did a Japanese Cormorant Lay Eggs on Cormorant Fishing of Uji River? : A Comparative Study of Capture Techniques and Breeding Methods TAKEZAWA Shoichiro, The Making of Yanagita Kunio: From a Romantic Poet and Liberalist Bureaucrat to the Founder of Japanese Folklore Studies
Vol. 42, No. 3	Articles NAKANO Ayumi, Re-Examining the Bride-Wealth Marriage in North India: A Case Study of Affinal Relationships among the Jogis in Western Rajasthan Research Information IKEYA Kazunobu, Nobuhiro KISHIGAMI, Shiro SASAKI, and Mikako TODA, The Trends of Hunter-Gatherer Studies: Information from the Eleventh International Conference on Hunting and Gathering Societies (CHAGS11)
Vol. 42, No. 4	Articles NOBAYASHI Atsushi, Clothes as Means to Visualize Ethnicity: A Case of Name Correction Process of Taiwan Indigenous <i>Sakizaya</i> People Research Resources NISHIO Tetsuo and Naoko OKAMOTO, An Unedited Source for the Bibliography of François Pétis de La Croix (1653–1713) de VOOGT, Alex, Shimpei C. OTA , and Jonas W. B. LANG, Work Ethic in a Japanese Museum Environment: A Case Study of the National Museum of Ethnology KAMEI Nobutaka, Trends of Museum Exhibitions on “Race” and “Racism”: Cases of Exhibitions by Musée de l’Homme in France and the American Anthropological Association

Senri Ethnological Studies (SES)

No. 95	IKEYA Kazunobu (ed.), <i>Sedentarization among Nomadic Peoples in Asia and Africa</i>
No. 96	MIO Minoru, Koichi FUJITA, Kazuo TOMOZAWA, and Toshie AWAYA(eds.), <i>Structural Transformation in Globalizing South Asia: Comprehensive Area Studies for Sustainable, Inclusive, and Peaceful Development</i>
No. 97	HAN Min and Yin SE (eds.), <i>Anthropological Perspectives on History, Culture and Museum: Theoretical Practice in Japan and China</i>
No. 98	KIKUSAWA Ritsuko and Lawrence A. REID (eds.), <i>Let's Talk about Trees: Genetic Relationships of Languages and Their Phylogenetic Representation</i>

Senri Ethnological Reports (SER)

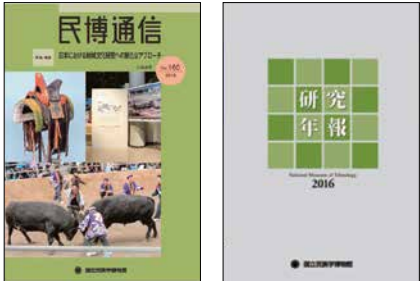
No. 142	TSUKADA Shigeyuki and Hironao KAWAI(eds.), <i>Current Trends and Issues in the Use of Historical Resources in China</i>
No. 143	HAMADA Akinori and Mikako TODA (eds.), <i>How Do Biomedicines Shape People's Lives, Socialities and Landscapes?</i>
No. 144	KAWAI Hironao and Liu ZHENGYU (eds.), <i>Food Culture and Daily Life in China under the Socialist System</i>
No. 145	YAMAMOTO Norio, <i>A Study of the Special Exhibition of Latin American Music and Musical Instruments in the National Museum of Ethnology</i>
No. 146	SAUCHOMAL, Sabino, Tomoya AKIMICHI, Shuzo ISHIMORI, Ken'ichi SUDO, Hiroshi SUGITA, and Ritsuko KIKUSAWA(comps.), REID, Lawrence A.(ed.), <i>Satawalese Cultural Dictionary</i>

Minpaku Tsushin

No. 157	MORI Akiko, How should “The Social” Be Described? : Interest in Places Where Acts of Care Occur
No. 158	YOSHIDA Kenji, Anthropology and the Museum at the Turning Point of Civilization: An Essay on the Occasion of the 40th Anniversary of the Opening of the National Museum of Ethnology
No. 159	TODA Mikako, The Living World of People with Disabilities in Africa: Its Regional Characteristics and History
No. 160	HIDAKA Shingo, The New Approach to Regional Culture Research in Japan

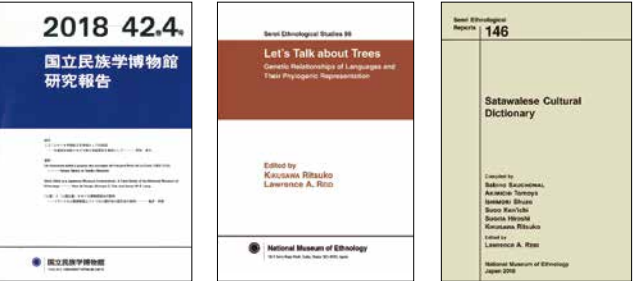
Annual Report of the National Museum of Ethnology 2016

The Annual Report of the National Museum of Ethnology is published annually to publicize Minpaku research.
The report is not confined to research activities alone. It also covers exhibitions and involvement of Minpaku staff in other public projects in the course of the year. In addition to publicizing Minpaku activities, it is also used for self-evaluation and as supplementary material for internal reviews.



Publications outside the Museum

Minpaku encourages the publication of research results by publishers in Japan and abroad. During the last year, the following works were published.
IIDA Taku (ed.), *Cultural heritage in the Human History* Rinsen Book
ONO Rintaro, Kazufumi NAGATSU, and Michiko INTOH (eds.), *Maritime People in the Western Pacific: Archaeological and Anthropological Perspectives*. Showado
FUKUOKA Madoka and Shota FUKUOKA (eds.), *Popular Culture in Southeast Asia: Identity, Nation-state and Globalization*. Stylenote



Center for Cultural Resource Studies

Objective for Establishing the Center

The Center for Cultural Resource Studies was established on April 1, 2017, with the objective of improving access to cultural resources at the Museum for interdisciplinary and international research.

Development of Cultural Resource Study

The National Museum of Ethnology (Minpaku) owns about 340,000 artifacts, 70,000 items of video and sound resources, 670,000 books, and other research resources such as photographic archives, research database, and field note archives, survey papers, and other ethnological research papers left by cultural anthropologists and ethnologists. These are important cultural resources that relate to the humanity’s cultures and activities, and precious academic resources to reflect on the past, present and future of humanity. The Museum is undertaking projects to improve the shared availability of these cultural resources for interdisciplinary and international research, by publishing the research results and information on these cultural resources through a database called Info-Forum Museum, and through other media including Special Exhibitions, Thematic Exhibitions, and Traveling Exhibitions. The Center supports these research projects, and plans and promotes new projects.

Projects of FY2017

In FY2017, the center supported the promotion of 4 database establishment projects and 7 database improvement projects based on the project to build the “Info-Forum Museum for Cultural Resources of the World,” and also assisted in the preparation and organization of the following exhibitions: special exhibitions (“Beads in the World” and “Revisiting Siebold’s Japan Museum”), thematic exhibitions (“Resilience of Indigenous Cultures in Canada: Past, Present and Future” and “A World Full of Life: The Art of Fujito Takeki, an Ainu Master Carver”), and a traveling exhibition (“The Power of Images: The National Museum of Ethnology Collection”). Additionally, the center conducted research to improve the joint use of academic resources.

Projects of FY2018

In FY 2018, we will mainly pursue three projects.

Research Promotion and Support for Info-Forum Museum Building Project

Since FY 2016, this Museum has managed an Institution-based Transdisciplinary Project of the National Institutes for the Humanities, entitled “Building of Info-Forum Museum for Cultural Resources of the World.” In FY 2018 the Museum will run four projects for database establishment, including the “Ainu Resource” and “Resource for Northeast Asia” projects, and five projects for database improvement, including the “Resource for Central and South America” and “Middle Eastern Resource” projects. The Center studies standardization and multilingual translations of the artifacts and resources. It also supports the promotion of these projects through database building, editing and publication.

Research Promotion and Support for Special Exhibitions, Thematic Exhibitions, and Traveling Exhibitions Project

The Museum implements Special Exhibitions, Thematic Exhibitions, and Traveling Exhibitions, in order to publish its cultural resources and related research outcomes. In the fiscal year 2018, the Museum will showcase: Special Exhibitions entitled “A‘Tower of the Sun’Collection: Expo ’70 Ethnological Mission”, “Transmitting Art and Craft–Japanese Industrial Design Originating in Tohoku” and “Toys Expo–Children in Modern Japan”; Thematic Exhibitions entitled “The World of Amish Quilts: Seeking Ways of Living, Weaving the World” and “Traveling Music: The String Instruments of South Asia” and Traveling Exhibitions entitled “Beads in the World” among others. The Center will promote the research that will enable these exhibitions and assist in the running of the exhibitions.

Research for Improving the Shared Availability of Cultural Resources

In the fiscal year 2018, we will research the ways to promote the interdisciplinary and international joint use of the cultural resources owned by this Museum, and effective ways to contribute to university education, academic research, dissemination of knowledge to the general public, and creation of cultures by their bearers.

Object

The Center for Academic Research Development was established in April 2017, and has assumed the research strategy functions that the Center for Research Development and Center for International Academic Exchange formerly provided for: national and international shared use and joint research; enhancing infrastructure; and plan and oversee the national and international strategies for the shared use and joint research organizations pioneering new domains. The center will reinforce the systematic research capabilities of each of our research departments and centers. More specifically, the Center engages in the activities required to promote internationally coordinated or joint research more strategically and systematically, including: improvement in the implementing organization of a research project based on shared use of resources; development, preparation and signing of (national and international) academic exchange agreements and the signing policies thereof; survey of overseas research trends; and information gathering and provision on external finances.

Promotion of Research Coordination and Collaboration with Overseas Research Institutes

To promote research collaboration and strengthen cooperation consideration and signing of scholarly cooperation agreements with overseas research institutions is proceeding. Based on these agreements, international symposia and workshops were conducted during FY2017. Minpaku signed cooperative agreements with National Museum of Iran (Islamic Republic of Iran) in November, and Taiwan Hakka Cultural Development Center and College of Hakka Studies, National Chiao Tung University Taiwan in December.



Signing Ceremony with Taiwan Hakka Cultural Development Center and College of Hakka Studies, National Chiao Tung University Taiwan

Name of the Institutes	Date of Agreement	Outline of Agreement and Activities in FY2017
Taiwan Hakka Cultural Development Center and Collegeof Hakka Studies, National Chiao Tung University (Taiwan)	December 16, 2017	International joint research, exchange of researchers, exchange of museum-related materials and information, etc. An agreement was concluded in FY2017 to promote and vitalize research and museum activities among third-party organizations.
National Museum of Iran (Islamic Republic of Iran)	November 8, 2017	International joint research, exchange of researchers, exchange of museum-related materials and information, etc. In FY2017, the agreement was signed to promote research projects and museum activities.
University of British Columbia, Museum of Anthropology (Canada)	March 9, 2017	Academic cooperation and exchange on research projects, exhibitions, database development, etc. In FY2017, our database content on materials related to indigenous peoples of northwestern coast of North America was provided to Reciprocal Research Network (RRN). Joint research was carried out with the researchers invited from the University on how to improve database of Info-Forum Museum and exhibit which originate from various indigenous peoples and cultures.
Institute of Anthropology and the Library, Zhejiang University (China)	April 19, 2016	Contribution of references, exchange of human resources, joint research. In FY2017, a collection of research literature was donated to "Minpakubunko" of the University Library.
Vanderbilt University (USA)	January 15, 2016	Strengthening global collaborative research and organizing international symposia. In FY2017, a joint research using Geographic Information System was promoted. An international symposium was held, and activity plans for the following years were fixed.
National Museum of Taiwan History (Taiwan)	October 17, 2015	Collaborative research and cooperation on exhibition development. In FY2017, Minpaku and Uchida Archives reviews were held with the researchers invited from the University for the preparation for Special Exhibition "Record Taiwan" which was scheduled to be held in FY2018.
The Museum of Northern Arizona (USA)	July 4, 2014	Strengthening academic exchange and collaborative research. In FY2017, co-editing of reviews with the source community of Hobi Jewellry collections was carried out, summary of collection reviews began, and an international workshop was held.
The National Direction for Cultural Heritage, Ministry of Culture (Mali)	May 7, 2014	Cooperation on protection, research, education and dissemination on cultural property in Mali.
The Institute of Ethnology and Anthropology, Chinese Academy of Social Sciences (China)	August 28, 2012	Along with other scholarly exchanges, Minpaku participates in research projects and the exchange or shared use of research materials, academic data and publications. In FY 2017, summary of international symposia was published in multi-languages.
The National Museum (Philippines)	July 18, 2012	Minpaku promotes scholarly research and exchange through projects that include joint research training, publication and exhibits. In FY 2017, the collaborative research on analyzing samples of plants was held. Renewal of the agreement for International Scholarly Exchange program was made.
The A:shiwi A:wam Museum and Heritage Center (USA)	June 3, 2012	Scholarly cooperation, development of joint research projects, and exhibits or educational use of museum materials. In FY 2017, preparation was carried out for the publication of summary of international workshops.
Institute of Ecology and Biological Resources (Viet Nam)	March 22, 2012	Promotion of academic exchange through joint research, training, publication, and exhibition projects. In FY 2017, field work was carried out by both institutions, and collections and analyses of samples of plants were made.
Peter the Great Museum of Anthropology and Ethnology of the Russian Academy of Sciences (Kunstkamera)(Russia)	October 21, 2011	Promotion of interaction and cooperative relationships between the academic and cultural spheres. In FY2017, part of our Exhibition Hall for Central and North Asia was renovated based on our discussion on various ethnic groups of Central and North Asia.

The Russian Museum of Ethnography (Russia)	December 3, 2010	Collaboration and cooperation in museology, research methods and cultural asset preservation. In FY2017, editing was carried out for the publication of SES and SER on materials of various ethnic groups in Central and North Asia.
The University of Edinburgh (U.K.)	May 17, 2010	Promotion of academic exchanges and joint research. In FY2017, editing of an English thesis collection was carried out by both institutions. Plans are being arranged to send our researchers to the University.
Taipei National University of the Arts (Taiwan)	May 15, 2009	Academic exchange, development of research projects, cooperation on museum exhibitions and educational initiatives, exchange of academic information and publications. In FY2017, an international Forum was held in Taiwan and at Minpaku to nurture museum experts. Preparation for the next year's International Forum were made.
Inner Mongolia University (China)	September 22, 2008	Exchange between teaching faculty and researchers, development of research projects, cooperation on museum exhibitions and education, exchange of academic documents and publications. In FY2017, cooperation on commentaries of historical resources relating to image materials of Mongol in the Manchukuo era, also cooperation on planning the symposium for Northeast Asian Studies. Collections and analyses were made on cultural interaction with Japan from the records of Eastern Mongolia.
The National Folk Museum of Korea (Korea)	July 11, 2007	Exchange between teaching faculty and researchers, development of research projects, cooperation on museum exhibitions and education, exchange of academic documents and publications. In FY2017, an international exhibition was co-hosted, also video was created jointly. Our professor was invited to the University and Joint Research on fishermen was held.
Shung Ye Museum of Formosan Aborigines (Taiwan)	July 1, 2006	Collaborative research and cooperation on exhibition development. In FY2017, a workshop for scholarly research was held in Taiwan and at our museum. The 21 edition of the scholarly publication " Taiwan Aborigines Research" was published
The National University of San Marcos (Peru)	June 14, 2005	Joint research projects and academic exchanges in archaeology. In FY2017, activities included excavation at Pacopampa archaeological site, supervising undergraduate students of the University, presenting papers at the 18th meeting of FIEALC2017, Peruvian archaeological conference and Japan Society for Studies of Ancient America.

Minpaku Fellows

This is a network of international researchers who have worked with or for the Museum in the past, and foreign and domestic research institutions with close ties to the Museum. In order to promote awareness and improve information exchange, our English Newsletter (MINPAKU Anthropology Newsletter) is published bi-annually. There are approximately 1,200 members in the Minpaku Fellows program.

Minpaku Fellows Breakdown by Area as of March 31, 2018

Area	Number of Fellows
Asia, the Middle East, and Oceania	685
Europe	175
North, Central and South America	220
Africa	68
Total	1,149



MINPAKU Anthropology Newsletter

Promotion of Collaboration and Cooperation with Research Organizations in Japan

To promote collaboration, cooperation and joint research with universities, research organizations and academic associations in Japan, agreements are concluded following consideration. In July 2017, agreement were concluded with Otsuma Women's University, in Feburary 2018 with Yamagata University,and in March with OsakaUniversity, Kyoto University of Art & Design.

Name of the Institutes	Date of Agreement	Summary of the Agreement
Kyoto University of Art & Design	March 19, 2018	Contribution to academic research, education, and social development
Osaka University	March 17, 2018	Contribution to academic research, education, social contribution, and development of other activities
Yamagata University	Februrary 16, 2018	Contribution to academic research, education, and social development
Otsuma Women's University	June 20, 2017	Contribution to academic research, education, and social development
Graduate School of Humanities and Faculty of Letters, Kobe University	July 15, 2016	Academic exchange on research education
Research Institute for Languages and Cultures of Asia and Africa, Tokyo University of Foreign Studies	November 25, 2015	International symposium on joint research on language and culture worldwide.
The Osaka Aquarium Kaiyukan	November 19, 2015	Roundtable discussions on how cooperation builds ties between academia and industry, revitalizes academic research and facilitates use of research results to benefit society.
Otemon GakuinUniversity	April 22, 2015–April 21, 2018	Academic conference on tradition and creativity in regional cultures.
Osaka Institute of Technology	March 23, 2015	Special exhibition of the results of joint research on digital media contents.
Ritsumeikan University	April 10, 2014	Symposium on collaboration and cooperation in food-related research.
Kanazawa University	March 23, 2014	Research forum to strengthen the already close ties between the two institutions.
Japan Association For International Education	March 28, 2013–September 26, 2017	Organization of workshops on the use of academic linkages and exchanges, and using shared research results to contribute to the development of society.
Japanese Society of Cultural Anthropology	February 27, 2008	Workshops on the use of academic exchange and research to contribute to the development of society.

Utilization of Minpaku for University Students and Faculty Members

We have established a system to encourage wide-ranging utilization of our research outcomes, exhibits, archived resources, cultural and academic information and facilities, for university education and research.

If you wish to use the Exhibition Halls for a lecture, seminar or official event (such as an orientation meeting for new students) of your university under the supervision of a faculty member, we will waive the admission charges, if you apply before the event.
If a faculty member can not supervise the event, or if a professional or specialized training college wishes to use the Museum for a specialist training course, the admission charges will be discounted upon presenting the syllabus or any document that describes the syllabus content.

Use of the Library

We have approximately 670,000 books and other media resources that focus mainly on cultural anthropology and ethnology. We encourage visits to the Library as a part of university education.

Use of Artifacts and Resources

We have approximately 340,000 artifacts and resources collected from all over the world. They can be used for university education or research for free, under certain conditions.

Use of Video and Sound Resources

We have approximately 70,000 video and sound resources from all over the world, including those produced by Minpaku. You can view about 770 Videotheque Program contents on DVD.

Use of Databases

An enormous amount of information is provided in our databases for collections and research results.

Development of Young Researchers

“Minpaku Young Researcher Support Seminar” is regularly held to promote joint use of the museum by young researchers. The two-day seminar consists of a keynote speech by museum faculty and presentation and discussion by participants. Additionally, it organizes library and storage area tours for young researchers to know more about various joint use systems and a facility directory.



Use of Exhibition Halls

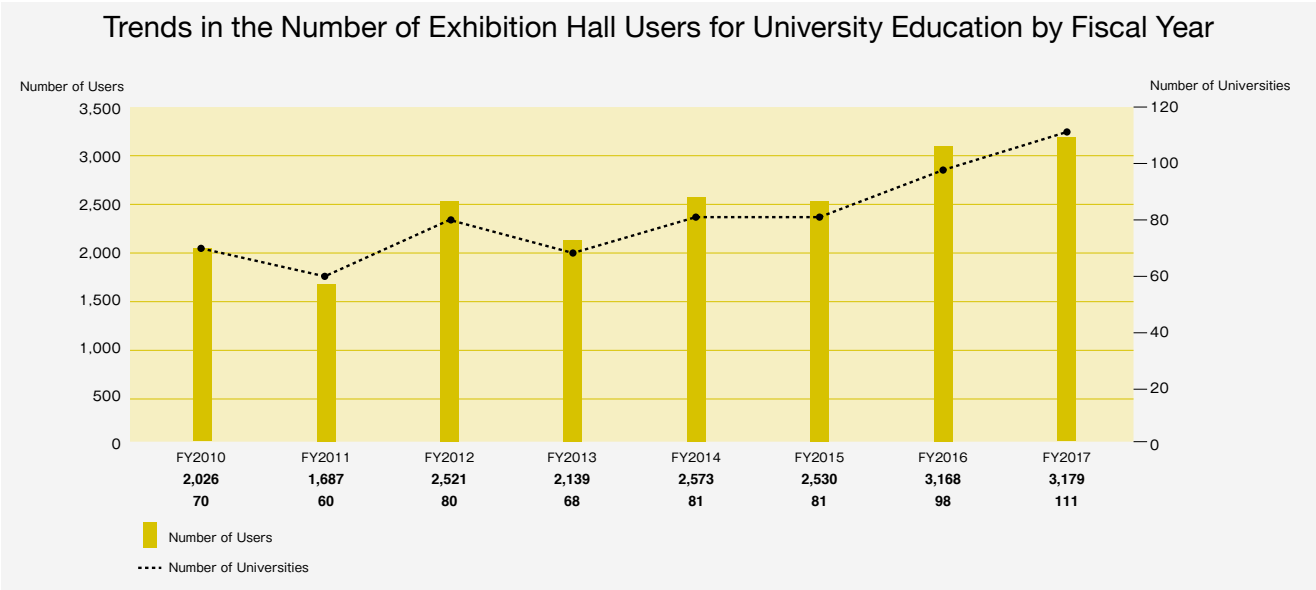


Use of Databases



Development of Young Researchers

Records of Use (Free-of-charge Use) 111 Universities, 3,179 users (FY2017)



Purpose of establishment

The museum has nondestructive testing and material analysis equipment systems to conduct primary analysis of folklore materials, cultural assets, and museum materials. The facilities was established in December 2017 to promote the active use of the systems by various organizations and researchers in cultural anthropology and relevant disciplines in its peripheral domains thereby contributing to increased joint use in scientific researches.

List of equipment

- X-ray CT scanning system
- Three-dimensional additive manufacturing machine (3D printer)
- Three-dimensional measuring system
- Pyrolyser Gas chromatograph - mass spectrometer
- Ion exchange chromatograph - mass spectrometer
- X-ray fluorescence spectrometer
- Temperature and humidity chamber

How to use

Please contact the Artifact Management Unit of the Information Planning Section if you are interested in using the systems.

Artifact Management Unit of the Information Planning Section

TEL +81-6-6878-8392
FAX +81-6-6878-8242
Mail hyohons@minpaku.ac.jp



X-ray CT scanning system



Three-dimensional additive manufacturing machine (3D printer)

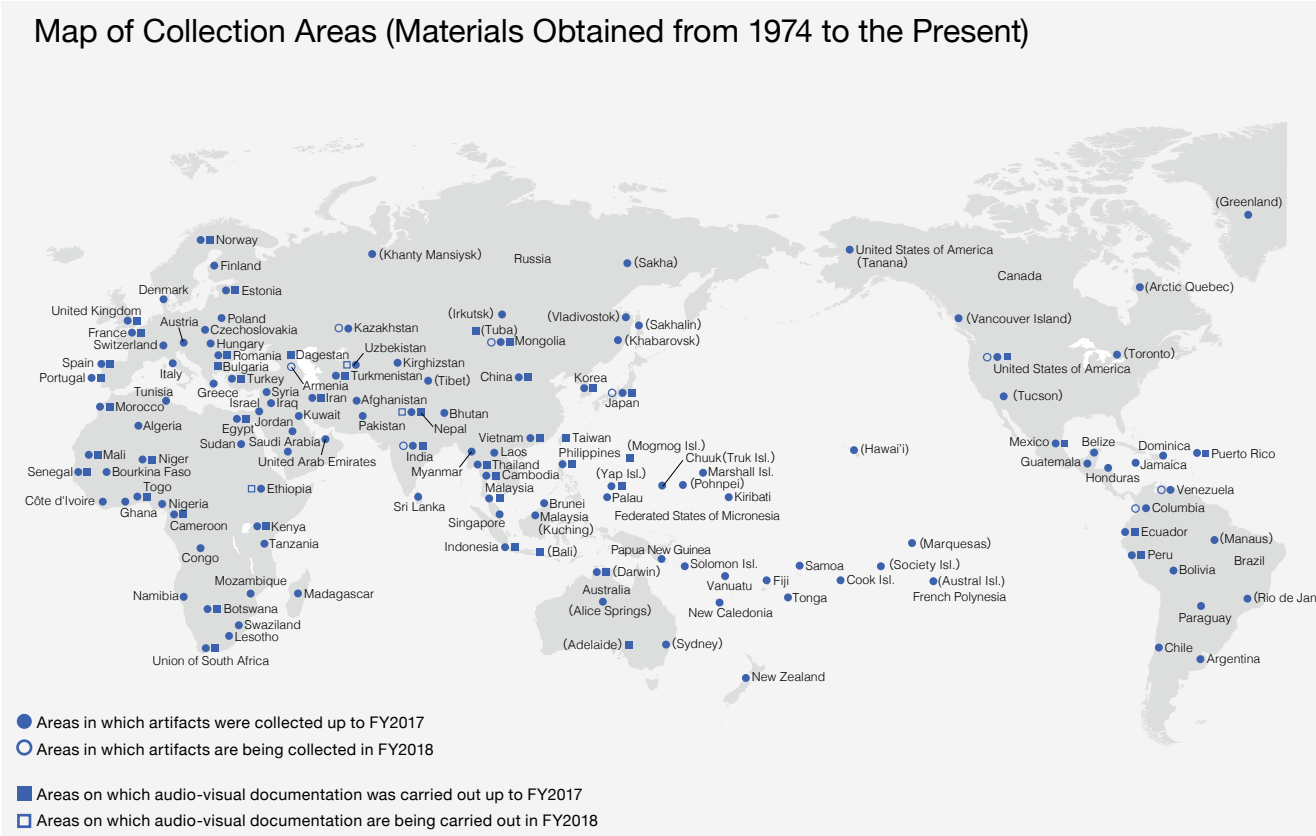


Temperature and human chamber

Materials and Information Collection and Storage, and Public Relations

The Museum has collected and stored a vast amount of materials and information concerning ethnology and anthropology for researchers inside and outside the country, and has made them available to society through exhibitions and other activities. To carry out these activities efficiently, the Museum has been trying to develop better ways to collect and manage materials, organize and provide information, create database systems and contents, hold exhibitions, and implement various other activities.

Materials and Databases



The Museum Collection of Artifacts and Other Materials

Artifacts (registered and unregistered)	343,738	Books and Periodicals	
From abroad	178,979	Books (Including bound magazines)	675,527
From Japan	164,749	Japanese materials	264,444
		Foreign language materials	411,083
Audio-visual Materials	70,850	Journals	17,099
Moving image	8,199	Japanese periodicals	10,129
Sound recordings	62,651	Periodicals in other languages	6,970

Human Relations Area Files (HRAF)	
Area files (ethnic groups)	385 files
Original texts	7,141 volumes

※ as of Nov. 2016
eHRAF World Cultures
Area files (ethnic groups): 307 Original texts: 5,781 676,468 page
eHRAF Archaeology (Archaeological document-oriented database of prehistoric age)
Area files (ethnic groups): 98 Original texts: 2,370 149,378 page

List of Databases

Databases of research resources held in the Museum and outcomes of research projects are made and open to the public.
(For each database description, the numerical value(s) in brackets at the end means the number of records contained in it. Databases with an asterisk are for use only inside the Museum.) See also “Ethnology Research Archives” on page 30.

Artifacts

Artifact Catalog
Basic information on the artifacts related to economic activities, everyday life, rituals, and manufacturing tools held in the Museum. Data includes objects' names, images, dimensions and weight, place, culture, and the year of acquisition. [285,122]
Detailed Information on Artifacts in the Catalog
Details about the artifacts held in the Museum, such as their local names and translation, images, materials used in their construction, dimensions and weight, when, where and how they are created or used and by whom, and the place and date of collection. [Inside the Museum: 264,460, including 69,713 records open to the public]

Published References to Artifacts in the Museum
Bibliographic information on published references to artifacts held in the Museum. [62,523]
Korean Daily Commodities Collection
Information (including images) on all daily commodities owned and used by a family in Seoul, South Korea. For each item, its location in their apartment, manner of acquisition, and the family's memories about it are recorded. [7,827]

The George Brown Collection (Japanese and English versions)
Basic collection information (including images) for materials collected by George Brown, a missionary and ethnographer who worked in the Pacific Islands from the late 19th century to the early 20th century, and now held in the Museum. [2,992]
Prints by Indigenous Peoples of Canada *
Basic information and description (including images) on our collection of typical prints created by indigenous peoples of Canada, most of which were displayed in our special exhibition *Voices from the Land, Visions of Life: Beauty Created by the Indigenous Peoples of Canada* in 2009. [158]

Audio-Visual Materials

Visual Materials Catalog
Information on our collections of movie films, videotapes and DVDs (photographs excluded). [8,199]
Videothèque
Information on visual contents provided by the *Videothèque* System in the main exhibition hall of the Museum. It is searchable by keywords as well as by the menu of a Videothèque booth. [775]
Performing Arts Film
Information (including videos) on film records of music, dance and theater that the Museum has made at various places in the world since 1982. Videos are available only inside the Museum. [849]
The Matsuo Minori Postcard Collection
Information (including images) on picture postcards bought by MATSUO Minori in places visited during his service in the Japanese Navy from 1919–1923. [170]

Photograph Collection of the Kyoto University Scientific Expeditions
Photographs taken by the Kyoto University Scientific Expedition to the Karakoram and Hindukush in 1955, by the Tonga Expedition of Kyoto University in 1960, by the Kyoto University African Scientific Expedition from 1961–1967, and by the Second Kyoto University Europe Scientific Expedition in 1969. [Inside the Museum: 42,195 including 22,361 records open to public]

The Umesao Tadao Photo Collection *
Photographs taken by UMESAO Tadao, the first director general of the National Museum of Ethnology, during his fieldwork at various places in the world. [35,481]

Photographs on Aboriginal Australian Culture *
Photographs of various scenes including ceremonies, daily life and landscapes in Aboriginal Australia from 1980–2004 taken by KOYAMA Shuzo, Professor Emeritus, National Museum of Ethnology. [7,999]

The Asaeda Toshio Collection *
Photographs of people, animals and plants in the Pacific Islands taken by ASaeda Toshio when he visited there in the 1930s as a member of several academic investigation teams. [3,966]

Photographs of Maritime Peoples of Indian and Western Pacific Ocean: The Ohshima George Collection
Photographs taken by OHSHIMA George, during his fieldwork in Asia and Oceania from 1967–1991. [Inside the Museum: 8,842 including 7,889 records open to the public]

Photographs of Cameroon, Africa: The Hata Nobuyuki Collection
Photographs taken by HATA Nobuyuki, Professor Emeritus, National Museum of Ethnology, during his fieldwork mainly in the Republic of Cameroon from 1969 to early 1990s. [6,530]

Morihiro OKI's Photographs of India
Photographs taken by a photographer OKI Morihiro in various places in India and Nepal from 1977–1996. The database includes photographs focused on rituals, festivals, folk paintings, performing arts, artifacts, and everyday life. [Inside the Museum: 22,120 including 21,971 records open to the public]

Nepal Photo Database (Japanese and English versions)
Photographs taken by TAKAYAMA Ryuzo, a graduate student of Osaka City University at that time, and other members of the Japanese Scientific Expedition for Northwestern Nepal in 1958, and information (including images) on artifacts collected by the expedition and now held in the Museum. [3,879]

Photographs on Northwestern Nepal and Manaslu *
Photographs taken by the Japanese Scientific Expedition for Northwestern Nepal from 1958-1959, partly including ones probably taken by the science team of the first Japanese Alpine Club Manaslu Expedition in 1953. They were part of materials of the former Ministry of Education Historical Archives transferred to the Museum. [620]

Ethnographic Images of the Spirit Dance in Thailand *
Photographs and videos of the Spirit Dance in Thailand shot by TANABE Shigeharu, Professor Emeritus, National Museum of Ethnology. The photographs can be searched and viewed by category, place, and ritual host of the Spirit Dance, and are also related to one of the research reports in Thai made about the dance. [Photographs: 10,082, Research reports: 41]

Photographs from the Group of the Synthetic Research of Cultures of Southeast Asian Countries *
Photographs with related information taken by the research group of the Synthetic Research of Cultures of Southeast Asian Countries during the 1st and 2nd missions out of three missions from 1957–1964. [4,393]
The World of Swidden Agriculture: Koumei Sasaki's Perspective *
Photographs on swidden agriculture in Japan taken by SASAKI Koumei, former director general of the National Museum of Ethnology, during his fieldwork. [454]

Audio Materials Catalog
Information on our collection of records, CDs and audio tapes. [62,651]
Itemized Information on Audio Records in the Catalog
Piece-by-piece information on music, and episode-by-episode information on traditional folktales records in our collection of audio materials. [351,802]

Library Materials

Book and Periodical Catalog
Bibliographic and holdings information about the books (including microfilms, etc.) and periodicals held in the Museum Library. [Books: 626,578 Periodical Titles: 17,099]

Umesao Tadao: Written Works (1934–)
Comprehensive catalog of written works from articles and books to endorers on the belly bands since 1934 by UMESAO Tadao, the first director general of the National Museum of Ethnology. [6,667]

Languages

The Nakanishi Collection: World Literary Materials
Information (with images of letter samples) on books, newspapers, manuscripts, and artifacts written in various languages and writing systems collected from all over the world by the late NAKANISHI Akira, former president of Nakanishi Printing Co., Ltd. [2,729]
The Yoshikawa Database of Materials for a Sumerian Lexicon
Digitized notebooks with keywords for Sumerian language studies compiled by YOSHIKAWA Mamoru, Professor Emeritus, Hiroshima University. [Keywords: 33,450 Pages: 40,596]
Talking Dictionary of Khinina-ang Bontok
An electronic dictionary of the Khinina-ang Bontok language spoken in Mountain Province, the Philippines, compiled by Lawrence A. Reid, Researcher Emeritus, University of Hawai'i. It contains image and sound data, as well as information typically found in a printed dictionary. [Headwords: 7,637]
Japanese Traditional Folktales: The Inada Koji Collection
Information (including sound data) on Japanese traditional folktales, documented by INADA Koji at Kyoto Women's University and his group in 29 prefectures of Japan from 1967–1978 (446 tapes, about 190 hour recording). Sounds are available only inside the Museum. [3,696]
rGyalrongic Languages (in English and Chinese)
Database of rGyalrongic Languages, spoken in northwestern Sichuan Province, China, compiled by NAGANO Yasuhiko, Professor Emeritus, National Museum of Ethnology and Dr. Marielle Prins. It contains 425/1200 lexical items and 200 sentences for 81 dialects/languages. It also contains sound data. [Words: 39,826 Sentences: 15,706]

Clothing Culture

Clothing and Accessory Collection
Detailed information and images of clothing materials and accessory artifacts held in the Museum, and field photographs. [27,701]
Publications Concerning Clothing Culture
Index of periodical articles and books that concern the culture of costumes and clothing. This database contains the following items: 1) Japanese periodical articles (current), 2) Japanese periodical articles (before the end of World War II), 3) Foreign language periodical articles, 4) Japanese books, 5) Foreign language ethnographies. [176,403]
Chronology of Clothing Culture in Japan 1868–1945
A digital chronology of clothing culture in Japan from 1868–1945 when western style clothing was not yet common. It consists of information on events, contemporary conditions, illustrations, and memoirs which were collected from newspapers and clothing magazines in that period. [11,908]
Image Database of Japanese Clothing Culture in the Modern Age
Image database on acculturation of clothing culture in Japan from 1868-1945 when Japanese style clothing was as popular as western style one. It includes images found in illustrations of newspaper novels and books, photographs, and posters in that period. [6,161]

Facts, etc.

Research Reports of Materials Located in Japan *
Location information on persons and materials related to folklore and ethnology in Japan, containing 1) artifacts, 2) persons who disseminate traditional technologies, 3) visual materials, and 4) publications. This database was constructed based on the *Research Reports* compiled by researchers appointed by the Museum and published in 1980–2003 by the Museum. [21,373]
Indigenous Architecture Restored by 3DCG: Wooden Buildings in Insular Southeast Asia
Information on wooden buildings which has been investigated by SATO Koji, Associate Professor, National Museum of Ethnology, at various places in Southeast Asia since 1981. GIF animations derived from three-dimensional computer graphics takes us around the inside and outside of buildings. [Locations: 34, Buildings: 52]
Cultural Heritage Recording Memories of Tsunami: Database of Temples, Shrines and Stone Monuments
Information (including images and maps) on temples, shrines, stone monuments and tablets conveying memories of tsunam in coastal area of Japan. [333]

Minpaku Library

Service Information

Daily from 10:00 a.m. to 5:00 p.m.(Entry permitted until 4:30 p.m.), except Sundays, National Holidays, and days that the Museum is closed.
Visitor qualifications: The library is open to all. Library books (except rare books) may be used and borrowed by anyone. Visitors must present documentation for verification of name and address (e.g., a driver's license or student identification card).

1. Encouraging Educational and Research Activities

Minpaku's library collection includes many highly specialized works. Facilities include three microfilm readers and a color copy service. The library is staffed by qualified librarians and provides full support for the educational and research activities expected of an Inter-University Research Institute.

2. Promoting Public Access to the Library Catalog through the National Institute of Informatics

In FY2017, printed materials in 39 languages were cataloged, and the repository's holdings reached 626,578 volumes. Under the NACSIS-CAT (a comprehensive national database of general indices) Retrospective Entry Project, 168 magazine titles, 5,450 microfiche records (4,859 North American degree theses, books 20 items and 571 articles of 106 titles of newspapers/magazines) were entered. With this, 95% of Minpaku's library data have now been entered.

3. Social Contributions

All users can check out materials from the library. As of FY2017, the library had 204 outside registered users making regular use of the library, who borrowed 1,850 items.

4. MINPAKU Library Catalog

The library catalog is open to the public and can be searched by anyone, anywhere from a personal computer or mobile phone. In FY2017, the catalog was accessed from computers 503,342 times and from mobile phones 151,692 times.



Library Reception Counter



Current Periodicals Section

Minpaku Repository

By using NII's (National Institute of the Information) institutional repository system,the Minpaku Repository,which includes in its holdings Minpaku's own publications,allows an open access to *Senri Ethnological Studies*, *Senri Ethnological Reports*, *the Bulletin of the National Museum of Ethnology*, *Senri Ethnological Research Reports Supplements*, *Minpaku Tsushin*,and authorized theses and dissertations which were published outside of Minpaku. As at the end of FY2017, the total number of publications in the repository was about 4,759. The average number of paper downloads was about 47,205 per month. In FY2017, a digital object identifier (DOI) was assigned to papers as museum publications to provide information that is necessary for permanent access.

Ethnology Research Archives

Since its establishment, the Museum has accumulated a wide range of resources, like research notes and papers of anthropologists and ethnologists, including audio-visual records from their fieldwork. To make good use of these materials, the Archives group under Information Management Committee continued in FY2017 to investigate the condition of archive resources and to develop inventory lists. The Museum will investigate continuously the condition of archive resources and develop and digitalize inventory lists, with the aim of making them open to public. In addition, April 2013 saw the creation of the Umesao Archives, where the enormous volume and variety of field notes, sketches, photographs, memos, draft manuscripts, publications, reviews and other intellectual assets produced by Minpaku's first Director-General, UMESAO Tadao, are stored. An archivist will analyze and organize this material and provide support primarily for scholarly research.

- AOKI Bunkyo Archive
 - IZUMI Seiichi Archive
 - IWAMOTO Kimio Archive
 - UMESAO Tadao Archives
 - OUCHI Seiko Archive
 - OKI Morihiro Archive (Indian Ethnological Cultural Resource Archive)
 - KATSURA Yonosuke Archive
- KANO Tadao Archive
 - KIKUZAWA Sueo Archive
 - SUGIURA Kenichi Archive
 - HIJIKATA Hisakatsu Archive
 - MABUCHI Toichi Archive
 - "Regional Typology of Japanese Culture Study Group" Archive



Neatly archived materials

Items in the Museum Collections Offered for Loan FY2017

In addition to using the items in its collection for internal research activities, the Museum offers items for loan to universities, other museums, and external organizations for educational and research purposes as part of its efforts to contribute to the public interest. To inquire about borrowing items from the Museum's collection, contact the Minpaku Collections Help Desk.
A total of 282 inquiries were received during FY2017.

Minpaku Collections Help Desk

TEL/FAX +81-6-6878-8213
URL <http://www.minpaku.ac.jp/english/research/sharing/helpdesk>

1. Number of Loans Made: 10, Number of Items Loaned: 631

Among the projects listed above, those for which the Museum's lending resources comprise more than 50% of the entire exhibit items are the following:

Borrower	Exhibition Title	Loaned Items	Exhibition Period	Items Loaned / Total Number of Items Loaned / % of Loaned Items Relative to the Entire Exhibition
SAKAI City Museum	Ancestral Rituals in Asia (corner display)	Funeral equipment	August 1–September 10, 2017	26 items / 26 items, 100%
Ishikawa Prefectural Museum of History	The Power of Images-The National Museum of Ethnology Collection	Masks, costumes, etc.	July 22–September 3, 2017	355 items / 359 items, 99%
Gakuyu-kan (Misato Town Museum)	Thailand's Culture Exhibition	Pestle, statue, etc	October 1–October 31, 2017	169 items / 169 items, 100%

2. Number of Special Loans (i.e., Loans for the Purpose of Photo-shooting, Close Examination for Research or Loan of Original Film): 106, 1,949 items

Of the above, 21 loans were made to universities for the use of photographs as references for survey research and writing, 30 were made to museums for the use of photographs in survey research and exhibitions.

3. Number of Loans of Audio-visual Materials: 125, Number of Items Loaned: 902

Of the above, 22 loans were made to universities (304 items), and 69 loans to individual researchers and research groups (389 items).

4. Inter-library Services

Number of special use (Use of original film or photo-shooting) 6 (of which 4 were for the use of photos as references for survey research and writing)

Photocopy orders: 4,025 (of which 1,658 were from universities)
Inter-library loans: 660 (of which 496 were from universities)
Photocopy orders: 335
Inter-library loans: 505

5. Research Archive Materials

Number of Browsing: 26
Number of Special use: 10



Artifact storage area

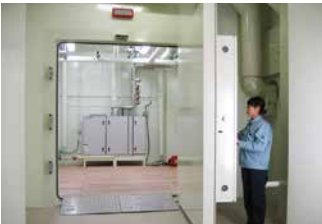
Storage of Academic Materials

The Museum has accumulated a large collection of academic materials through its research. Many of the materials are organic artifacts that generally have the least resistance to insect and fungus damage. Therefore, the Museum takes special measures to repel and kill insects and protect its collection. For example, newly acquired artifacts from abroad are taken to a fumigation chamber where they are treated with chemical insecticides and germicides, because the natural environment and ecosystem of their place of origin are substantially different from those of Japan. Artifacts that have insect damage in Japan, however, are subjected to a non-chemical insecticidal process as required, due to the nature of the materials. In this way, different insecticidal processes are used, depending on the place of origin, the extent of damage, and the nature of the materials. To enhance insecticidal efficiency and better protect artifacts from insect damage in a unique way, in 2007 a large high/low temperature walk-in treatment chamber was installed in the Museum and the existing fumigation chamber was upgraded to a multi-functional chamber capable of carbon dioxide treatment and low oxygen concentration treatment. Also, a catalytic combustion type chemical abatement system was introduced to ensure the safe treatment of waste chemicals, thus realizing a materials management system that is friendly to people, artifacts, and nature.

These state-of-the-art systems are one of the results of the research on the conservation science of artifacts that the Museum and other university researchers have been jointly conducting to ensure effective use of its artifact collection.



The high/low temperature walk-in treatment chamber



A multi-functional fumigation chamber capable of carbon dioxide and low oxygen concentration treatments

Exhibitions

Concept and Organization of Exhibitions

At the National Museum of Ethnology, exhibitions are designed to present the latest achievements of anthropological, ethnological and other related scientific research to the public through a variety of media. In doing so, the Museum hopes to enhance public awareness of different cultures around the world and foster greater cross-cultural understanding. The exhibitions consist of Main Exhibitions and the Special Exhibitions. The Main Exhibitions are mostly permanent, and are designed to deepen understanding among visitors of cultural diversity and commonality. The Special Exhibitions, on the other hand, highlight specific topics and are held several times annually for a limited period of time.

Main Exhibitions

The Main Exhibitions are arranged into regional and cross-cultural exhibitions. The regional exhibitions cover Oceania, the Americas, Europe, Africa, and Asia, including Japan. The regional exhibitions start with Oceania, and progress as if traveling eastwards around the world to finish in Japan.

This arrangement allows visitors to view Japanese culture in comparison with other cultures. In designing the exhibitions, the National Museum of Ethnology adhered to the notion that all human cultures around the world have equal value; the notion has remained unchanged since the inception of the Museum. Accordingly, the exhibitions are designed to help visitors respect cultural differences among peoples, represented in the rich diversity of human lifestyles. These exhibitions are also characterized by their emphasis on clothing, food and housing, which gives visitors a clear idea about lives in different regions around the world. The cross-cultural exhibitions, on the other hand, focus on specific themes, not regions, and currently accommodate exhibitions on music and language.

Given the substantial changes of the social and cultural situation in the world since Minpaku’s opening 40 years ago in 1977, the Museum have been renovating its exhibitions since FY2008.

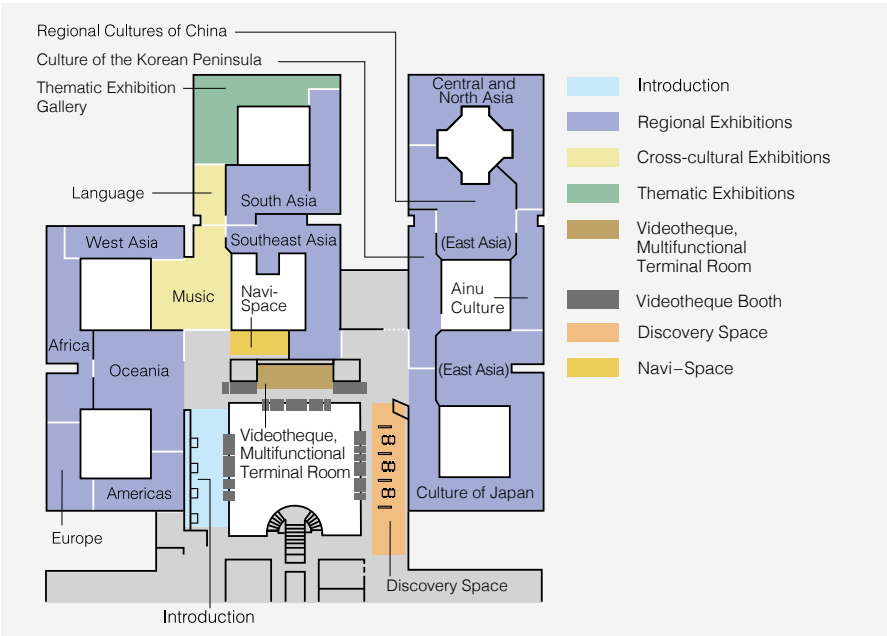
The basic renewal strategy can be summarized in five points. (1) Making use of its function as an Inter-University Research Institute, where the insights of researchers inside and outside Japan are gathered. (2) Exhibitions as forums for promoting mutual exchange and understanding among all three of the actors involved in an exhibition: researchers, culture bearers who are the subject of the exhibition, and visitors. (3) Innovating “glocal exhibitions” which demonstrate changes in historical as well as modern times, alongside linkages between local areas, Japan, and the world. (4) Advanced and integrated systems for access to information. (5) Accommodating diverse requests from the user community.

In March 2009, totally transformed Africa and Western Asia exhibitions were opened to the public. These were followed in March 2010 by crosscultural Music and Language exhibitions, new spaces for shared use, and partial renovations of the Information Zone. March 2011 saw the opening of the new Oceania and Americas exhibitions. New Europe exhibitions and Information Zone exhibitions were opened in March 2012. In March 2013, “Ritual, Festivals and Performing Arts” and “Everyday Life” as a part of “Culture of Japan” were renewed. In March 2014, “Culture of the Korean Peninsula”, “Regional Cultures in China”, and a part of “Culture of Japan”, “Okinawan Lives” and “Multiethnic Japan”, were renovated. In March 2015, “South Asia”and “Southeast Asia” exhibitions were renovated, and in June 2016, “Central and North Asia” and “Ainu Culture” summed up the reopening of the museum.

In the areas for thematic exhibitions that are located in the Museum Exhibition Hall, temporary exhibits displaying themes related to contemporary issues or cutting-edge research topics are provided. The thematic exhibition gallery can also be used as a shared exhibition gallery to expedite displays of the latest research trend of universities and other institutions in Japan and overseas.

The Museum also encourages the introduction of information devices for its exhibits. The Videotheque is the world’s first on-demand video library of its kind, developed by the Museum. Visitors can select video programs from the Museum’s collection of about 775 titles, which give visitors a glimpse of the living cultures of the world’s peoples and let them see how the artifacts shown in the Main exhibitions are actually used. The Minpaku Digital Guide, the world’s first portable audiovisual device that explains exhibits, was updated in FY2007. The new version is smaller and lighter and boasts greater usability than the conventional one.

In the Discovery space, visitors can use the terminals to access and compare a wealth of information on artifacts currently on display. Related books and journals as well as Minpaku publications are also available.



Minpaku Digital Guide
Our audiovisual guides use video and sound to explain where artifacts were found, how they were used, and by whom. Explanations are currently available in Japanese, English, Chinese and Korean.
(The Minpaku Digital Guide was used by 7,844 visitors in total during FY2017.)

Regional Exhibitions

The regional exhibitions focus on Oceania, the Americas, Europe, Africa, West Asia, South Asia, Southeast Asia, Central and North Asia, and East Asia. The figures appearing next to each exhibition space’s name indicate the exhibit area in square meters.

Oceania 660m²



Human Dispersal into Oceania Living off the Sea Living on Islands
Contact with the Outside World Expressions of Indigenous Identity

In Oceania, tens of thousands of islands, large and small, are scattered across the surface of the ocean. The islands are inhabited by peoples who grow root and tree crops and are highly skilled in the arts of seamanship and navigation. In the sections “Human dispersal into Oceania”, “Living off the Sea”, and “Living on Islands”, we explore the diverse techniques developed to survive in island environments with limited resources. We also examine how indigenous cultures have been affected by encounters with the outside world in the sections “Contact with the Outside World” and “Expressions of Indigenous Identity”.

Europe 250m²



Agriculture and the Annual Cycle Religions and Beliefs
Industrialization Europe in Transformation

From the 16th to the 20th centuries, Europe was the center from which Christianity and modern institutions, technologies, and knowledge spread around the world. Now the tide has turned, and immigrants from all over the world are making themselves part of European society. Here we explore the interactions of tradition and religion, rationalization and industrialization, and immigration in the formation of modern Europe, focusing on the concept of “time”.

The Americas 320m²



Encounter Eating Clothing
Prayer Creativity

The vast expanses of the Americas range from polar regions to tropical rain forests and encompass a huge diversity of natural environments. Peoples adapting to these environments developed distinctive lifeways. Then came conquest and colonization by European peoples, with foreign influences permeating everyday life. Here our focus is on clothing, diet and religion. While clarifying the relationship between their underlying diversity and historical influences, we also draw attention to traditional artists and craftsmakers who creatively combine tradition with modern values in their works.

Africa 500m²



Excavating History Urban Life Work Adornment
Prayer Africa Today

Africa, the birthplace of humanity, has gone through profound changes and has always been tied to the outside world. The diversity of cultures and languages that we see in the African continent today is the result of these changes. In this exhibit, we introduce the way in which people live in Africa today, focusing on four different aspects—‘urban life’, ‘work’, ‘adornment’ and ‘prayer’. We also look at the efforts people are making to rediscover their history. We hope that this exhibit fosters renewed understanding toward the people of Africa, who live in the same present as we do.

West Asia

310m²

Religion
Living in the Desert
The Palestinian
Diaspora
The Japanese
and the Middle East
Sound Culture
and Pop Culture



The people of West Asia, or the Middle East, call their land in Arabic *mashriq*, 'the land of the rising sun'. Historically, they have kept close ties to the *maghrib*, 'the land of the setting sun', that is, North Africa. These regions consist mainly of dry lands inhabited by nomadic peoples. Yet a network of cities such as Baghdad and Cairo also sustained a flourishing urban culture. Muslims are the majority in West Asia, but the region is also the cradle of Judaism and Christianity. This exhibit highlights the region's religious practices, nomadic life, women's dress, and music and dance, to show how global change has reached into people's lives.

Southeast Asia

730m²



Subsistence
Everyday Life in a Village
Urbanscapes
Entertainment and Recreation

Southeast Asia is encompassed by forests and seas. The climate is tropical to subtropical; people start work early in the morning, and return home and nap in the middle of the day when temperatures can approach 40°C. In the evenings and after squalls have passed, temperatures start to fall. People go out to shop or go back to work in their fields. In the cool of the evening they relax, head to outdoor stalls for meals with friends or family, or relax and enjoy traditional performing arts. The theme of this exhibit, which introduces a rich variety of ethnic cultures, is "A Day in the Life of Southeast Asia".

South Asia

600m²



Religion – Tradition and Diversity
Ecology and Subsistence
Urban Popular Culture
Tradition and Trends in Textiles
South Asia on the Move

South Asia extends from the mountain ranges in the north, to the Arabian Sea in the west, and the Bay of Bengal in the east. In this region there is a vast range of natural environments inhabited by peoples with an enormous diversity of religions, cultures, and ways of life. Wisdom of coexistence developed over the centuries, and, despite rapid industrialization, is preserved to this day. This gallery exhibits a diverse array of religions, livelihoods and crafts, together with new forms of popular culture emerging primarily in urban settings, and the booming textile culture in the midst of globalization.

Central and North Asia

710m²



Living with Nature
The Socialist Era
Central Asia
Mongolia
Siberia and the Arctic

Central and North Asia is an immense region occupying the northeast of the Eurasian continent. It has long been a crossroads for interactions linking east and west, north and south, where many diverse peoples have mingled. After undergoing socialist rule during the twentieth century, the region has shifted to market economies. Caught up in the wave of globalization, traditions are being reevaluated. This exhibit has three sections on "Central Asia", "Mongolia", and "Siberia and the Arctic", along with two sections accentuating the key themes of "Living with Nature" and "The Socialist Era."

East Asia

Culture of the Korean Peninsula 330m²



Spiritual Worlds
Housing
Food
Clothing
Recreation
Knowledge

The inhabitants of the Korean peninsula developed their own distinctive culture under constant influence from other ethnic groups. Cultural elements adopted from Eastern Siberia in prehistoric times, and later from China, were reworked and domesticated to become distinctively Korean. The result is a culture with a level of integration rarely found elsewhere in the world. In modern times, Korea was colonized by Japan, then split in two after independence and rapidly modernized. In today's world, Koreans are actively migrating to other parts of the world, and people of Korean descent can be found living outside Korea. Spiritual worlds, everyday life, recreation, and knowledge are the themes of this exhibit, which introduces the multilayered history and energetic character of this culture.

East Asia

Ainu Culture 270m²



The Ainu People
Kamuy and Nature
Present and Future

The Ainu are an indigenous people who developed a culture adapted to the cold natural environment of the northern part of the Japanese archipelago, primarily in Hokkaido. Domination by the Tokugawa Shogunate during the Edo period and assimilation during the Meiji period led to discrimination against the Ainu and imposed hardships on them. In recent years, Japan's government has acknowledged this history and been taking steps that show respect for the Ainu people. Here we introduce the evolving situation of the Ainu, who continue to honor their traditions and strive to create a new and distinct culture.

East Asia

Regional Cultures of China 660m²



Subsistence
Musical Instruments
Zhuang Stilt House
Costume
Crafts
Taiwan Indigenous Peoples
Religion and Writing
Chinese Overseas
Transmission of Chinese Tradition

The Chinese landscape is immense and highly diverse, both in altitude and topography. Its variety of natural environments has fostered a wide range of ethnic cultures. Han Chinese account for over 90% of China's population, and, while concentrated in the plains, are spread throughout the nation. Mainland China is also home to 55 minority peoples, who live for the most part in the highlands or grasslands in southwest, northwest, and northeast China. In Taiwan, indigenous groups speaking diverse Austronesian languages live alongside Han Chinese. Chinese overseas all over the world regard China as their ancestral homeland. This exhibition introduces a diverse range of Chinese ethnic life ways. Taking into account historical and local characteristics, the exhibition explores livelihoods, costume, musical instruments, dwellings, crafts, religion and writing, Han Chinese marriage ceremonies and ancestor worship, Taiwan indigenous peoples, and Chinese overseas.

East Asia

Culture of Japan 1,460m²



Ritual, Festivals and Performing Arts
Okinawan Lives
Multiethnic Japan

Stretching from Hokkaido in the north to Okinawa in the south, the long, narrow Japanese archipelago is blessed with a rich variety of ecological niches. The combination of diverse natural environments and contacts with neighboring cultures has resulted in formation of distinct local traditions. In addition, many people from other countries have also come to live in Japan in recent years, adding new elements to the mix. In this section we approach Japanese culture from four perspectives: Festivals and Performing Arts, Everyday Life, Okinawan Lives, and Multiethnic Japan.

Cross-cultural Exhibitions

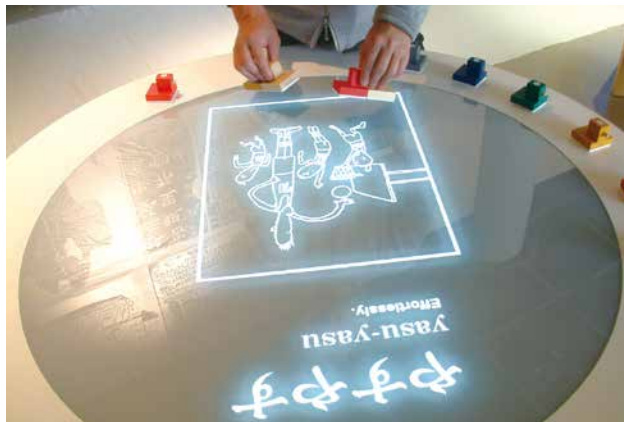
Music 550m²



Drums: A Spirited Sound Gongs: The Sound of Power
Oboe: Performing Sounds Guitar: Sounds in History

Through sounds, we humans convey messages, express emotions, know our surroundings, imagine far away times and places, inspire or console ourselves, and communicate with gods and spirits. With examples from all over the world, this exhibition shows how sounds and music are deeply related to our identity as humans.

Language 170m²



Components of Language
Writing Systems of the World

Whenever people meet and interact, the need for communication arises and pieces of information are continuously exchanged through various means. Among these, language, shared exclusively by human beings, is a highly developed tool which enables us to express emotional states, describe our deepest thoughts, and to pass intellectual knowledge beyond space and over generations. Language is our irreplaceable heritage, reflecting our diverse cultures and serving as a window for understanding people's cognitive and creative abilities.

Information Zone

Introduction



The exhibits in the Introduction section are designed to enable visitors to experience directly how anthropologists and ethnologists think and how Minpaku exhibits could be explored. Here is where your global journey starts.

Videotheque



The Videotheque was developed by the Museum in 1977 as the world's first on-demand video library of its kind. It contains video programs that introduce rituals, performing arts, and the living cultures of peoples around the world, as well as information on the artifacts on exhibit at the Museum. We have continued to make improvements, making available multimedia programs and rare research videos shot by our researchers during their fieldwork. FY2012 improvements in our existing system include fuller menus that allow retrieving programs from multiple perspectives. Booth interiors have been upgraded to offer a brighter, more pleasant atmosphere and improved audio environment. Three wheelchair-accessible terminals featuring Universal Design have been added.
(There were 56,719 requests for Videotheque programs in FY2017.)

Discovery Space



Research Desk Deepen Your Knowledge
Voices from the Field Connect to the World
Touch the World Widen Your Perspectives

In the Discovery Space, visitors may search for more information about exhibits at the Research Desk. Materials related to Minpaku researchers' projects can be found at Voices from the Field. Touch the World provides an opportunity to handle as well as see exhibit materials, to gain a deeper understanding of them. Visitors are invited to learn more about the artifacts on exhibit, to satisfy their curiosity about what Minpaku researchers are studying, and to experience artifacts directly.

Special Exhibitions

Special Exhibition in Commemoration of the 40th Anniversary of the Opening of the Museum
Beads in the World

March 9–June 6, 2017

Organizers: The National Museum of Ethnology
Cooperations: Osaka Prefectural Chikatsu Asuka Museum, Museum of Yayoi Culture, Okayama Orient Museum, NPO Kyoto Kofu Hozonkai (Kyoto Antique Fabrics Preservation Association), Osaka Center For Cultural Heritage, Kobe lampwork glass museum, Matsuno Industry Co., Ltd, Mikimoto Pearl Island Co., Ltd., The Senri Foundation
Project leader: IKEYA Kazunobu
Organizing Committee members: [Internal members] NOBAYASHI Atsushi, SAITO Reiko
[External members] ENDO Hitoshi, KAWAGUCHI Yukiya

Beads are used for many purposes, including decorations, accessories and rosaries. They are usually made either of glass, or stone or shell. However, a new world of art is created by the use of animal teeth and insect wings.
In this exhibition, the artistic features of products and accessories used in Japan and the rest of the world are introduced, by regarding beads as one of the masterpieces created by people all over the world.



Special Exhibition in Commemoration of the 40th Anniversary of the Opening of the Museum
Revisiting Siebold's Japan Museum

August 10–October 10, 2017

Organizers: The National Museum of Ethnology, National Museum of Japanese History, The Asahi Shimbun Company
Project leader: SONODA Naoko
Organizing Committee members: [Internal members] YOSHIDA Kenji, NOBAYASHI Atsushi, SAITO Reiko, HIDAKA Shingo
[External members] SASAKI Shiro, HIDAKA Kaoru
A collaborative project between the Museum: The Tokyo Metropolitan Edo-Tokyo Museum, Nagasaki Museum of History and Culture, Nagoya City Museum
In Special Collaboration: Museum Fünf Kontinente, Munich (MFK), Brandenstein-Zeppelin Family
Cooperations: All Nippon Airways, The Senri Foundation
PR Assistance: Japanese Red Cross Society

Siebold who came to Japan in the late Edo period brought back an extensive collection of materials relating to nature and life in Japan to Europe.
Thanks to Siebold's collection of Museum Fünf Kontinente, Munich (MFK) and the relevant materials owned by the Brandenstein-Zeppelin Family who are the descendants of Siebold, the Siebold's Japan Museum has come back to life for the first time in 150 years.



Special Exhibitions

Exhibition Title	Period
The Great Andes Civilization: Inca, the Reviving Empire of the Sun	Sept. 14–Dec. 12, 1989
Masks in Equatorial Africa: Hidden Forest Spirits*	Mar. 15–May 31, 1990
The E.S. Morse Collection: Meiji Folk Crafts that Crossed the Pacific	Sept. 13–Dec. 4, 1990
Engelbert Kämpfer: The Genroku Period Viewed by a German*	Feb. 7–Apr. 16, 1991
Greater India: Deities and Man in the Hindu World	Aug. 1–Nov.5, 1991
Daghestan, Crossroads of Civilization: Ethnic Arts of the Caucasus*	Mar. 12–May 19, 1992
Aboriginal Australia: Fifty Thousand Years of Hunters and Spirits	Sept. 10–Dec. 8, 1992
Asia Viewed by Torii Ryuzo, a Pioneer of Ethnology*	Mar. 11–May 14, 1993
Ainu Moshiri: The Ainu World Viewed through Their Designs	June 10–Aug. 17, 1993
Javanese Cotton Print: A World of Diverse Traditions	Sept. 9–Nov. 30, 1993
Indigenous Peoples and Cultures in Taiwan*	Mar. 10–May 24, 1994
Woven Flowers of the Silk Road: An Introduction to the Carpet Heritage of West Asia and Central Asia	Sept. 8–Nov.29, 1994
Music and Musical Instruments in Latin America*	Mar. 16–May 30, 1995
Weaving Color as Culture: The Maya Today	Sept. 14–Nov. 30, 1995
Japan through the Eyes of Siebold and His Son	Aug. 1–Nov. 19, 1996
Images of Other Cultures: From the British Museum Collection	Sept. 25, 1997–Jan. 27, 1998
What is Inside? Forays and X-rays into Ethnographic Objects*	Mar. 12–May 26, 1998
Mongolia: The Rise of Nomadic Culture	July 30–Nov. 24, 1998
Cultural Heritage of the South Pacific: The George Brown Collection*	Mar. 11–May 31, 1999
Ethnic Cultures Abroad: People Moving, Cultures Mixing	Sept. 9, 1999–Jan. 11, 2000
Theater at the Museum: The Expressive Body	Mar. 18–May 14, 2000
Ethnology and the Rise of Cinema: From Shadow Theater to Multi-Media	July 20–Nov. 21, 2000
Ethnology of Life in the Taisho and Showa Periods: Shibusawa Keizo and the Attic Museum	Mar. 15–June 5, 2001
The Sea Otter and Glass Beads: Trade of Indigenous Peoples of the North Pacific Rim	Sept. 20, 2001–Jan. 15, 2002
Seoul Style 2002: Life as It Is with the Lee Family	Mar. 21–July 16, 2002
Wrapping Culture: Furoshiki and Wrapping Cloths of the World	Oct. 3, 2002–Jan. 14, 2003
Mandala Deities in Tibet and Nepal	Mar. 13–June 17, 2003
A West African Story-telling Village	July 24–Nov. 25, 2003
Messages from the Ainu: Craft and Spirit	Jan. 8–Feb. 15, 2004

Exhibition Title	Period
Multietnic Japan: The Life and History of Immigrants	Mar. 25–June 15, 2004
The Arabian Nights	Sept. 9–Dec. 7, 2004
More Happy Every Day: The World of Bricolage Art	Mar. 17–June 7, 2005
Fashioning India	Sept. 8–Dec. 6, 2005
Minpaku Kids-World: Objects as Ties between Children and Their Society	Mar. 16–May 30, 2006
Arabesque of Batik Designs and Technivues: From Java to the World	Sept. 7–Dec. 5, 2006
Pilgrimage and Sacred Places: A Voyage of Self Discovery	Mar. 15–June 5, 2007
The Great Ocean Voyage: VAKA MOANA and Island Life Today	Sept. 13–Dec. 11, 2007
The Profound Earth: Ethnic Life and Crafts of China	Mar. 13–June 3, 2008
SELF and OTHER: Portraits from Asia and Europe	Sept. 11–Nov.25, 2008
When Japan's Tea Ceremony Artisans Meet Minpaku's Collections: Creative Art in Perspective	Mar. 12–June 14, 2009
Voices from the Land, Visions of Life: Beauty Created by the Indigenous Peoples of Canada	Sept. 10–Dec. 8, 2009
Africa in the Works of El AnatsuiA Fateful Journey	Sept. 16–Dec. 7, 2010
Umesao Tadao: An Explorer For the Future	Mar. 10–June 14, 2011
Devotion to the Arts of Living Daily Life Among the Ainu of the Kurile, Sakhalin and Hokkaido Islands: Objects from the Late 19th - Early 20th Century Collections of Ethnological Museums in Germany and Japan	Oct. 6–Dec. 6, 2011
"Modernologio" Now: Kon Wajiro's Science of the Present	Apr. 26–June 19, 2012
The Warp and Weft of Weaving: Handlooms and Textiles of the World	Sept. 13–Nov. 27, 2012
Zafimaniry Style: Life and Handicrafts in the Mist Forest of Madagascar	Mar. 14–June 11, 2013
Shibusawa Keizo Memorial Project Attic Museum	Sept. 19–Dec. 3, 2013
The Power of Images: The National Museum of Ethnology Collection	Sept. 11–Dec. 9, 2014
Food Culture in Korea and Japan: The Tastes of NANUM and OMOTENASHI	Aug.27–Nov.10,2015
Ishuretsuzo, the Image of Ezo: Tracing Persons, Things and the World	Feb.25–May.10,2016
Amazing show tents in Japan	Sep.8–Nov. 29, 2016
Beads in the World	Mar. 9–June 6, 2017
Revisiting Siebold's Japan Museum	Aug. 10–Oct. 10, 2017
A 'Tower of the Sun' Collection: Expo '70 Ethnological Mission	Mar. 8–May 29, 2018

*The distinction between a special exhibition and a thematic exhibition was abolished in 2001 and now all of the temporary exhibitions are called "Special Exhibitions".

Thematic Exhibitions

Thematic Exhibition in Commemoration of the 40th Anniversary of the Opening of the Museum Resilience of Indigenous Cultures in Canada: Past, Present and Future

September 7–December 5, 2017

Project leader: KISHIGAMI Nobuhiro

Organizing Committee members: [Internal members] SAITO Reiko, ITO Atsunori

Co-organizers: Embassy of Canada to Japan, The Japanese Association for Canadian Studies

Cooperations: Destination Canada, Canadian Museum of History,
Museum of Anthropology at the University of British Columbia

Canada, with its diverse ethnicity, marked the 150th anniversary of its national foundation in 2017. Those who had lived in the nation before the arrival of European settlers are called Native Canadian. They experienced sudden and drastic social change after encountering European people. However, they have inherited their original culture while creating a new one. The exhibition introduced diverse cultures of indigenous peoples of the northwest coast, plains area, eastern forest area, subarctic area, and northernmost area.



Thematic Exhibition in Commemoration of the 40th Anniversary of the Opening of the Museum A World Full of Life: The Art of Fujito Takeki, an Ainu Master Carver

January 11–March 13, 2018

Organizers: National Museum of Japanese History,

The Foundation for Research and Promotion of Ainu Culture

Project leader: SAITO Reiko

Organizing Committee members: [Internal members] YOSHIDA Kenji, KISHIGAMI Nobuhiro, ITO Atsunori

[External members] IGARASHI Satomi, KITAHARA Jirota, OKADA Keisuke

Co-organizers: Ministry of Land, Infrastructure, Transport and Tourism,
Hokkaido Government Board of Education, Ainu Association of Hokkaido,
Osaka Prefectural Government, Suita City, Suita City Board of Education

Cooperations in Listing: Maeda Ippoen Foundation,
Genki no Oka, Hokumin Co. Ltd., Shoutokuji,
TSURUGA RESORT CORPORATION, KAKUYA Hiroshi, SASAKI Takeshi,
FUJITO Takeki, YOSHIDA Ishi



Fujito Takeki (1934-) started wood carving at age 12 with his father, who earned a living from carving bear figures in Asahikawa. Since then, he has been carving the animals indigenous to the northern part of Japan, such as bears, wolves, and sea otters, as well as the figures of his forerunners handing down Ainu culture while inheriting his ancestors' carving techniques, all the while creating his distinctive world with mutually blended delicacy and boldness. He is highly acclaimed as a leading carver in Hokkaido at home and abroad, with his unrivaled realistic depiction rooted in the deep affection for all living things, as well as his outstanding imagination and creativity. The exhibition showcased about 90 works in one hall, from his early works capturing the swift movements of animals to the life-sized figures of the Ainu, monumentally depicting their history and dignity, tracing his history of creation for the past 70 years and the background.

Traveling Exhibitions

The Power of Images: The National Museum of Ethnology Collection

July 22–September 3, 2017 Ishikawa Prefectural Museum of History

Project leader: YOSHIDA Kenji

It was held at the National Art Center, Tokyo, during February to June 2014, and at the National Museum of Ethnology during September to December 2014 as a special exhibition, and then as a traveling exhibition at the Koriyama City Museum of Art, Fukushima Prefecture, during June to August 2015 and then at the Kagawa Museum during October to November, 2016.

The latest exhibition at the Ishikawa Prefectural Museum of History showcased designs and arts from around the world selected from the National Museum of Ethnology Collection, and examined the universality of the feelings and effects raised by the images created by humankind, or actions of the images and how they are appreciated, are universal.

Others

New Collection in Commemoration of the 40th Anniversary of the Opening of the Museum Mr. SHIMEGI'S Coffee Collection

September 28–November 14, 2017

Project leader: SUGASE Akiko

There used to be a legendary home-roasted coffee shop in Kichijoji, Tokyo. Its name is "Mocha." Yukitoshi Shimegi, the shop owner, was extraordinarily passionate about his study of coffee roasting techniques during his life. He even traveled around the world to investigate the origins of coffee culture and collected related materials. The exhibition introduced the world of coffee, which was introduced to Japan via Europe from the Middle East and which was subsequently raised to an art form by Shimegi, with about 50 items selected from the Shimegi Collection of more than 300 items donated to Minpaku.



Photo Exhibition in Commemoration of the 40th Anniversary of the Opening of the Museum

November 9–December 26, 2017

Planning Director: IIDA Taku

Exhibitions at Minpaku are organized around academic studies and with materials gathering around the world. Various studies and collections were used for reference when the first exhibition hall was established in 1977. This photo exhibition introduced the activities of former museum staff and forerunners with the photographs of those days, respectively, at relevant exhibition halls.



International Cooperation

JICA Knowledge Co-creation Program: Administration of Museums and Community Development

"Museums and Community Development" is a three-month training course for museum specialists, provided jointly by the National Museum of Ethnology and the Lake Biwa Museum. It is intended to provide museum specialists from around the world with practical skills and know-how in the acquisition, documentation, conservation, exhibition, and education of material, all of which are indispensable for museum operation and contribute to promote each country's culture.

The three-month course was introduced in 2004, at the request of the Japan International Cooperation Agency (JICA), and replaced the conventional three-week "International Cooperation Seminar on Museology" previously offered by the Museum as part of the JICA Training course, "Museum Management Technology–Collection, Conservation and Exhibition–". Approximately 10 trainees from various countries and regions are accepted annually. After the Great East Japan Earthquake (2011), it was decided, since FY 2012, to enhance components related to safety and disaster prevention in the management of museum artifacts. Other additions to the course include contents which allowed trainees to plan the management of their museums, and to implement and disseminate their experience and knowledge acquired during the course to their museums. At the same time, the course also renewed its name to "Comprehensive Museology".

In FY 2015, the course developed and changed its name to "Museums and Community Development", which includes the role of museums played in communities. The curriculum provides skills and knowledge to enhance community development through museums. Ten participants from Armenia, Egypt, Papua, New Guinea, Samoa, Seychelles, Vanuatu, Zambia, Turkey and Jordan, and one observer from Saudi Arabia participated in the program from September 25 to December 16, 2017. The training took place at Minpaku and the Lake Biwa Museum, and included study trips to areas affected by the Mid Niigata Prefecture Earthquake in 2004, the CHUETSU Earthquake Memorial Corridor, the Tokyo National Museum, the National Museum of Nature and Science, Tokyo, and the Hiroshima Peace Memorial Museum. Participants reported on the activities of and issues confronting museums in their home countries, and took part in the Public Forum "Museums in the World 2017" held at Minpaku on November 3, 2017. Eighty-five people participated and actively shared opinions with those making presentations.

Until March 2018, 248 individuals from 60 countries and regions have participated in Minpaku training programs, and have contributed to building a strong international network of museum specialists and curators.



Public Forum



Specialized Program (Preventive Conservation)



Lecture at Minpaku



Study Trip to CHUETSU



Dressing kimono experience



Closing Ceremony

Partnership between the Museum and Society

The Museum has been working to build networks to ensure the more systematic and viable use of cultural resources through academic collaboration with museums and universities, both in Japan and overseas. The Museum is also promoting various projects and activities that benefit local communities and international society, in cooperation with many organizations.

Min-pack

In order to contribute to a better understanding of our research, the Museum has developed a learning-kit for children, called Min-pack. It is rented to schools and other educational institutions. Min-pack is a learning kit carried in a suitcase that contains a variety of materials including clothes, musical instruments, and everyday commodities, of the world's countries and regions, with children's learning aids. 26 packs and 15 types are now available.

Number of loans in FY2017: 215 in total

- Living in the Extreme North—Anoraks and Duffle Coats from the Inuit in Canada
- Treasure Box of the Andes—The Festivals and Life of the Peruvian Southern Highlands
- Costumes in Java: Religion and Tradition
- Indian Costumes: Saris and Kurtas
- The Arabian Nights
- Islam and Life of the Arab World
- Seoul Style: A Day in the Life of Children in Seoul
- Seoul Children After-school
- Bricolage Art
- Ainu Culture Encounter
- Ainu Culture Encounter 2—Clothing Made from Bark Fiber
- Expedition to the Steppes of Mongolia
- The 2011 Umesao Tadao Exhibition: Tools of Knowledge Production (This uses artifacts from the Special Exhibition “Umesao Tadao” held in 2011.)
- Muslims around the World: Daily Prayers (Started in April 2018)
- Muslims around the World: Contemporary Life (Started in April 2018)



Min-pack
“Muslims around the World: Daily Prayers”



Min-pack
“Muslims around the World: Contemporary Life”

Workshops

Workshops are organized to introduce the culture of the world through hands-on experiences (crafts) and to share research outcomes of the museum researchers with society.

Date	Workshop	Lecturer
April 28, 2017 May 2, 2017 May 27, 2017	Workshop associated with Special Exhibition “Beads in the World”, “Attention to bead materials! – Let’s make paper beads.”	IKEYA Kazunobu
July 22, 2017	Kids Workshop for Summer Holiday “Introducing the ethnic costumes of Muslim –Let’s try fieldwork”	SUGASE Akiko
October 1, 2017 –November 5, 2017	Workshop associated with Thematic Exhibition “Resilience of Indigenous Cultures in Canada Past, Present and Future”, “Let’s make Indigenous Arts of Canada” “Let’s make a raven mask of the Indigenous people in the Northwest Coast of Canada,” “Let’s make a stencil print of the Canadian Inuit.”	KISHIGAMI Nobuhiro TANUSHI Makoto (Print Artist)
October 9, 2017	Workshop associated with New arrival exhibition “Mr. Shimegi's Coffee Collection”, “What is Shimegi's Coffee?”	SUGASE Akiko
December 23, 2017	Workshop associated with Year-end and New Year Exhibition Event “Dog”, “Let’s find dogs at Minpaku!”	MARUKAWA Yuzo



Workshops
“Attention to bead materials! – Let’s make paper beads.”

Worksheets

We have worksheets for a themed tour, for a special or thematic exhibition, and for self-learning, depending on visitor's request. Related details can be found on our website. They are downloadable for free use.

Conduct of Kamuynomi

The Museum is carrying out two projects under an agreement with the Ainu Association of Hokkaido, a public interest incorporation. One is an implementation of the Kamuynomi rite. Kamuynomi is an Ainu word meaning 'prayer to the deities'.

By implementing the Kamuynomi rite, the Museum aims to ensure proper storage of its Ainu collection and handing down of this traditional rite to future generations. In the past, this rite was privately performed by the late Mr. Kayano Shigeru (former director of KAYANO SHIGERU'S Nibutani Ainu Museum). Since FY2007, branches of the Hokkaido Ainu Association (currently the Ainu Association of Hokkaido) gave public performances of traditional Ainu dance together with the Kamuynomi rite. We received cooperation from the Association's Yakumo and Tomakomai local federation in FY2017. The other project is to accept traditional artisans sent by the Ainu Association, which will help the Museum to further improve its academic research and collection on Ainu culture, and also promote the cultural development of Ainu people.



The Kamuynomi rite

Music Day at Minpaku

World Music Day, a festival which began in France to celebrate the summer solstice with a musical performance, was introduced in Japan in 2002. On this day, various musical events are held nationwide. Since 2003 the Museum, in support of the event, has been making space available for concerts to members of the public who enjoy music. On June 18, 2017, 25 groups and individuals gave musical performances using various instruments.



Music Day at Minpaku 1



Music Day at Minpaku 2

Museum-School Partnership Program

Twice each year, in spring and fall, Minpaku presents “Guidance for Teachers”, an event at which teachers are introduced to tools for use before and after visits to the museum as part of school trips or other extramural activities. Our aim is to promote greater use of the museum in education. 268 teachers from 87 schools participated in FY2017. The Museum also provided opportunities for a “Work Experience Program” to junior-high school students, and 14 participants from 6 schools were accepted during FY2017.

Volunteer Activities

Minpaku Museum Partners (MMP) is a group of volunteers established in September 2004, to assist the Museum in the planning and implementation of its activities.

MMP is promoting a widely various range of activities in cooperation with the Museum, such as “guidance for visually-impaired persons” (a program to support them to experience the exhibitions in the hall), “wakuwaku taiken at Minpaku” (a hands-on tour mainly for elementary schoolchildren), and craft workshops for general visitors. MMP also actively involves itself in workshop festivals and volunteer exchange programs outside the museum to deepen the relationship with other museums and facilities.



Guidance for visually-impaired persons



Wakuwaku taiken at Minpaku



Knowledge Capital workshop festival

Events and Public Relations

In its efforts to increase public awareness of the research activities undertaken by the Museum and knowledge about other peoples and cultures of the world, the National Museum of Ethnology organizes a variety of events and activities to publicize the Museum's latest research results in formats easily accessible and understandable by the general public.

Minpaku Seminars

On the third Saturday of every month, the Museum's academic staff and others give lectures in plain language to the general public on the newest research findings.

FY2017 Total Attendance: 2,409 (in the FY2016: 2,744)
□ indicates seminars associated with special exhibitions
○ indicates seminars associated with thematic exhibitions

No.	Date	Lecturer	Title
467	April 15, 2017	AISHIMA Hatsuki	Reading Texts of Islamic Thought in Egypt
468	May 20, 2017	SUZUKI Nanami	Exploring Aging-in-place in the 21st Century: Amish Ways of Searching for Well-being of Diverse People and Communities
469	June 17, 2017	MISHIMA Teiko	Invented Immigrants
470	July 15, 2017	MINAMI Makito	Musician Caste Gandharbas' Today in Nepal
□ 471	August 19, 2017	HIDAKA Kaori, NOBAYASHI Atsushi, SONODA Naoko	Siebold's Japan Exhibitions and Natural History
○ 472	September 16, 2017	KISHIGAMI Nobuhiro	Indigenous Cultures in Multi-cultural Country, Canada
473	October 21, 2017	HAYASHI Isao	Tracing the History of the George Brown Collection
474	November 18, 2017	YOSHIDA Kenji	Scrutinizing the World of Masks: Africa and Museums
475	December 16, 2017	NOBUTA Toshihiro	The Family of the Orang Asli: Matriliney, Uxorilocal Residence, and Polygyny.
○ 476	January 20, 2018	IGARASHI Satomi, KAIZAWA Toru, OKADA Keisuke, SAITO Reiko	Overview of Takeki Fujito's Works: from Wooden Carved Bear to Monumental Art of the Ainu
477	February 17, 2018	YAMANAKA Yuriko	Sounds of the Uncanny: Acoustic Images of the Supernatural
□ 478	March 17, 2018	NOBAYASHI Atsushi	Expo'70 Ethnological Mission: Mask, Statues of Gods and Materials for Life in Tower of the Sun



No.470 "Musician Caste Gandharbas' today in Nepal"



No.472 "Indigenous Cultures in Multi-cultural Country, Canada"



No.478 "Expo'70 Ethnological Mission: Mask, Statues of Gods and Materials for Life in Tower of the Sun"

Minpaku Weekend Salon: A Chat with a Researcher

To better understand our research, this event provides an opportunity for the public to talk directly with research institute staff in the Museum's exhibition hall. The Minpaku Weekend Salon was launched in FY2007, as part of the Museum's 30th Anniversary project. Like last year, the events were held mostly on Sundays. It was held a total of 46 times in FY2017, and the audience totaled 1,884 persons.

Special Lectures and Performances

Performing arts of the world's peoples are staged, with the aim of deepening understanding of cultural anthropology and ethnology among the public.

FY2017 Total Attendance: 188

Birth of Songs – Dissemination and creation of folk songs

Date	November 11, 2017
Lecturer	KAWASE Itsushi
Performers	INOUE Hiroto, MATSUDA Mio, YAMAGUCHI Ryoji, YAMASHIRO Daisuke, YOSHIDA Kunitoshi
Attendance	188



Special Lectures and Performances "Birth of Songs – Dissemination and creation of folk songs"

Minpaku Film Shows

Valuable films on cultural anthropology and ethnology, hardly available in public, are shown with commentary by researcher.

FY2017 Total Attendance: 2,252

Screening of an Egyptian Film, Ali the Goat and Ibrahim

Date	September 9, 2017
Lecturers	IIZUMI Naoko, KAWASE Itsushi, AISHIMA Hatsuki
Title	Ali the Goat and Ibrahim
Attendance	315

Taiwanese Film Shows: Learning about Taiwan through Films

Date	October 14, 2017
Lecturer	NOBAYASHI Atsushi
Title	Zone Pro Site
Attendance	337

Public Seminar Migratory Birds and People in Northeast Asia

Date	February 11, 2018
Lecturers	HIGUCHI Hiroyoshi (The University of Tokyo), IMAI Tomoki (Movie Director) , UDA Shuhei, IKEYA Kazunobu
Title	BIRD TIME
Attendance	315

Minpaku World Cinema

By selecting appropriate movies for theme "Thought on The Future of Humanity from Films", the Museum offers a series of film showings accompanied by researcher commentary. Through these events, we discuss how we might realize an equitable and egalitarian society based on a mutual understanding of different views and a cosmopolitan world outlook.

Date	Lecturer	Title	Attendance
September 18, 2017	SUZUKI Motoi, SUGASE Akiko	Still Life	403
November 5, 2017	SUZUKI Motoi, YASUGI Yoshiho	Volcano	284
February 10, 2018	SUGASE Akiko, MINAMIDE Kazuyo (St.Andrew's University)	Television	302
March 10, 2018	SUZUKI Motoi, SUGIMOTO Yoshio	Dheepan	296

Minpaku Collaborates with Knowledge Capital

Our tie with the Knowledge Capital Association, signed in FY2014, made it possible to hold "Minpaku and Knowledge Capital," a course of lectures presented at the Osaka Umeda Cafe. Scholars explained their subjects of research in an easy-to-understand manner by providing attendees with artifacts to examine closely.

Theme: Beads in the World Participants in total 167

No.	Date	Lecturer	Title
1.	April 12, 2017	IKEYA Kazunobu	"The World is Connected through Beads"
2.	April 19, 2017	NOBAYASHI Atsushi	"Culture of Indigenous Taiwanese Seen from their Personal Accessories"
3.	May 10, 2017	SAITO Reiko	"Glass Beads Trading of the Ainu"
Excursion	May 21, 2017	IKEYA Kazunobu	"Charm of Beads: Minpaku Exhibition Tour"

Theme: Talking about fieldworks Participants in total 212

No.	Date	Lecturer	Title
1.	November 27, 2017	IIDA Taku	"A Job of Fieldwork: From Dream to Reality"
2.	December 13, 2017	NIWA Norio	"Walk on the Pacific: Drinking kava to Japanese adventurers"
3.	December 20, 2017	UDA Shuhei	"Similarity and Difference of Cormorant Fishing Techniques"
4.	January 10, 2018	ITO Atsunori	"Collections Review with People from the Source Community: Fieldwork turned on its head"
5.	January 24, 2018	YOSHIOKA Noboru	"Language Hunting at the Roof of the World"
Excursion	February 4, 2018	SAITO Akira	"Feasts of the Patron Saints in the Amazon: A Fusion of the Native Traditions and Christianity"

Related Activities

On November 18–19, 2017, Minpaku hosted the Northern Osaka Museum Messe, a combination of exhibits, workshops, and musical performances provided by museums from the eight cities and three towns comprising northern Osaka. The National Museum of Ethnology and Suita City concluded a "Basic Agreement on Mutual Cooperation" through which both will promote close ties contributing to the development and enrichment of the local community. In addition, Minpaku will use the Suita City "Five-University Lifelong Learning Navi" (http://www.suita5u.com) to disseminate information about its activities. On September, 2017, Minpaku Fair was held at Suita City Information Plaza (Inforest Suita), to promote Minpaku's activities (visitors totaled 25,496 persons).



Publicity through the Public Media

Publicity is developed through the mass media to convey information about Minpaku’s activities. A program entitled “Asides to Research and Minpaku Activities” was launched through the “Meeting for Media and Minpaku Staff”, held monthly on every third Thursday. The Museum has been mentioned in a total of 1,278 programs and articles:19 on TV, 69 on radio, 723 in newspapers, 119 in major magazines, 224 in minor magazines, and 124 in other media. Minpaku has also been featured in regular radio broadcasts and newspaper series.

- * “*Tabi, Iroiro Chikyujin* [Journeys: Various People on the Earth]”
Published every Thursday since April 2009 in the evening edition of the Mainichi Shimbun newspaper.
Published from April 2005 to March 2009 as a series entitled “The Study of Other Cultures”.
- * “Minpaku *mono-gatari* (stories of products)”
Published every Thursday since April 2009 in the evening edition of the Mainichi Shimbun newspaper.
Published 3-4times a month from October 2017 in the Sankei Shimbun.

Materials for the General Public

Survey and Guide

National Museum of Ethnology: Survey and Guide 2017 (in Japanese)
National Museum of Ethnology: Survey and Guide 2017–18 (in English)

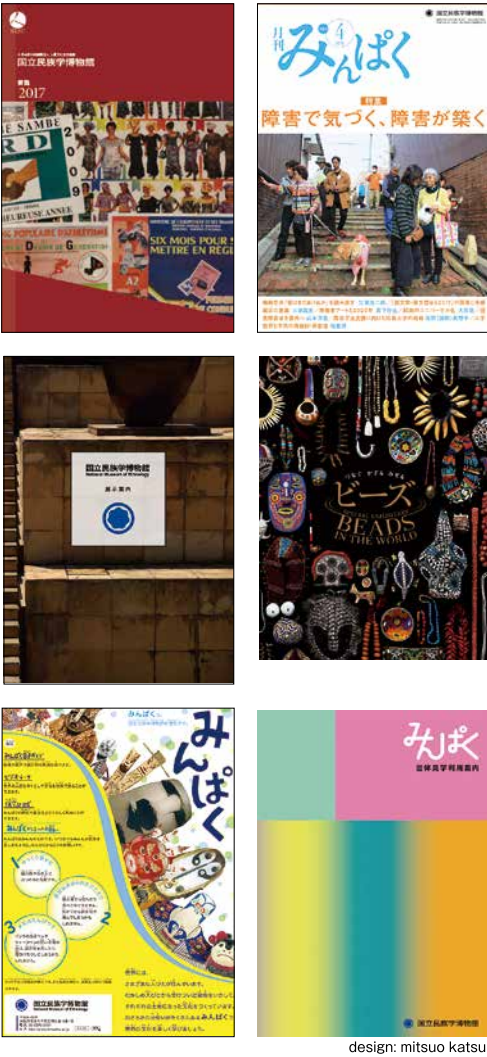
Publicity

MINPAKU Anthropology Newsletter
Gekkan Minpaku [Minpaku Monthly]
Minpaku Calendar

Guidebooks and Catalogs

National Museum of Ethnology : Guidebook
Special Exhibition Catalogue “Beads in the World” (In Japanese)
Special Exhibition Catalogue “Beads in the World” (In English)
Thematic Exhibition Catalogue “A World Full of Life:
The Art of Fujito Takeki, an Ainu Master Carver”

Minpaku General Information Leaflet
(Japanese, English, Chinese, Korean, Children’s, and Braille versions)
Exhibition Description Sheets
(Japanese, English)
Minpaku Group Tour Guide
General Information on Special Exhibitions



Internet

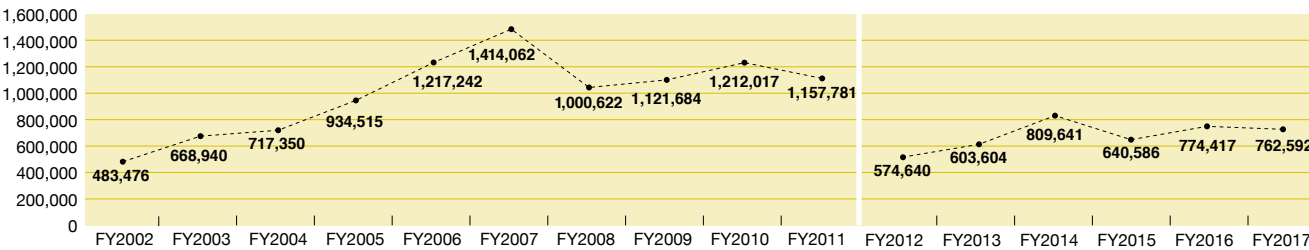
Website <http://www.minpaku.ac.jp/>
The home page features Minpaku research, exhibits, and other activities, along with information on graduate education, publication, and materials in its library and collections.

E-mail magazine <http://www.minpaku.ac.jp/museum/enews>
To provide updates on the latest research, special or thematic exhibitions and various events, like Minpaku Seminars, “Minpaku e-news”, a monthly newsletter is emailed to subscribers.

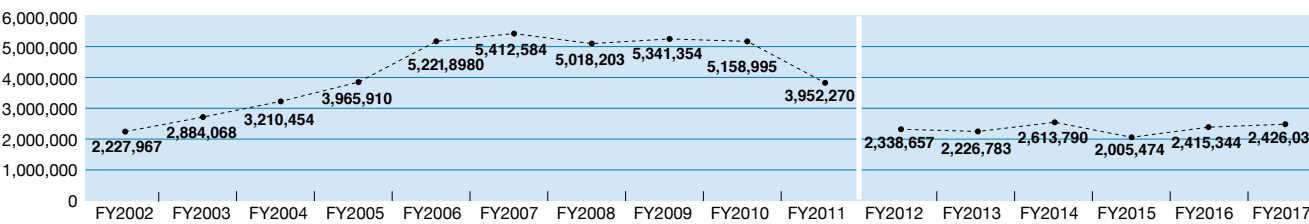
Social Media Facebook <http://www.facebook.com/MINPAKU.official>
Twitter <http://twitter.com/MINPAKUofficial>
YouTube <http://www.youtube.com/MINPAKUofficial>

Using various social media provides opportunities to link Minpaku with people interested in cultural anthropology and ethnology, and also to give information on research and museum activities.

Number of Visitors to the Minpaku Website 762,592 (FY2017)



Number of Web Pages Accessed 2,426,037 (FY2017)



*Counting procedures changed starting in 2012.

Number of Visitors in FY2017

Annual Number of Visitors

Total number of visitors	239,476	Adults	157,486
Daily average	783	Students high school, college and university	23,818
Total number of visitors since the establishment of the Museum	10,971,646	Children primary and junior highschool	51,290
		Children below primary School	6,882

Special Exhibition

Special Exhibition in Commemoration of the 40th Anniversary of the Opening of the Museum	
“Beads in the World” March 9 - June 6, 2017	54,292
“Revisiting Siebold’s Japan Museum” August 10 - October 10, 2017	21,349

Thematic Exhibitions

Thematic Exhibition in Commemoration of the 40th Anniversary of the Opening of the Museum	
“Resilience of Indigenous Cultures in Canada Past, Present and Future” September 7 - December 5, 2017	60,753
“A World Full of Life: The Art of Fujito Takeki, an Ainu Master Carver” January 11 - March 13, 2018	24,563

Traveling Exhibition

“The Power of Images: The National Museum of Ethnology Collection” July 22 - September 3, 2017	4,883
Ishikawa Prefectural Museum of History	



NIHU carries out research on the human sciences and aims to create new value systems that will genuinely enrich our lives.

NIHU is one of the four inter-university research institute corporations in Japan. It consists of six inter-university research institutes that specialize in humanities research. Each of the institutes is deeply involved in foundational research in their field as both a domestic and international research center. The six institutes interact in a complementary fashion and carry out research that transcends the frameworks of traditional disciplines. They also cooperate with other research organizations domestically and internationally in their attempt to identify and solve modern day issues.

Research and Communications

In 2016, two new centers, the Center for Transdisciplinary Innovation (CTI) and the Center for Information and Public Relations (CIP) were established to improve governance at NIHU.

The two Centers promote international collaborative research by building a research network around the six institutes. At the same time, the Centers communicate their research globally and are committed to developing next generation scholars.

Center for Transdisciplinary Innovation (CTI)

CTI strengthens mutual cooperation between the six institutes and leads NIHU's Transdisciplinary Projects that collaborate with universities and research institutions in Japan and overseas.

NIHU Transdisciplinary Projects

Institute-based Projects

REKIHAKU: Constructing Integrated Studies of Cultural and Research Resources, and Renovating Sharing Infrastructures of Research Resources in Japanese History and Culture

NIJL: Project to Build an International Collaborative Research Network for Pre-modern Japanese Texts

NINJAL: A New Integration of Japanese Language Studies based on Diverse Language Resources

NICHIBUNKEN: Historical and International Research into Popular Culture to Pursue New Images of Japan

RIHN: Transformation towards Sustainable Futures in Complex Human-Nature Systems in Asia

MINPAKU: Info-Forum Museum for Cultural Resources of the World

Multidisciplinary Collaborative Projects

Change of Local Communities and Reconstruction of Community Cultures after Disasters in Japanese Archipelago

Rethinking Eco-health in Asia

Development of a Field of Comprehensive Bibliographical Studies from an Interdisciplinary Perspective

Network-based Projects

NIHU Area Studies
Northeast Asia Modern Middle East South Asia

Japan-related Documents and Artifacts Held Overseas: NIHU International Collaborative Research and Utilization

The Archives of the Dutch Factory in Hirado

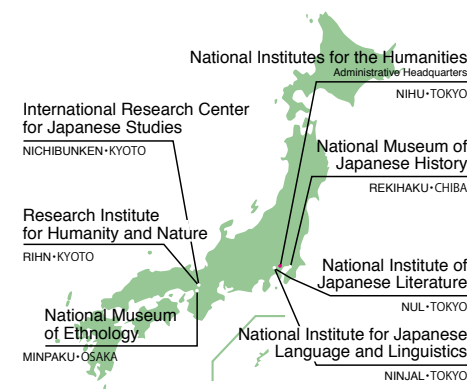
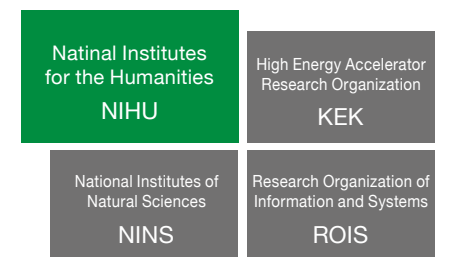
Insights into Japan-related Overseas Artifacts and Documents of the 19th Century in Europe through Research and Use

Research, Conservation and Utilization of the Marega Collection Preserved in the Vatican Library

Survey, Study and Use of the Japan-related Documents and Artifacts in North America

Coordination between Projects to Make Effective Use of Research Results

Four inter-university research institute corporations, and six inter-university research institutes specializing in humanities.



Center for Information and Public Relations (CIP)

CIP consolidates data related to human cultures by gathering information and research results from researchers affiliated with NIHU, and important documents and materials from the archives of the six institutes. The materials are made available to the public.

Public Information Activities

Advanced Collaboration Systems

nihuINT <https://int.nihu.jp/>

Comprehensive search engine for databases operated by the six NIHU institutes as well as other organizations.

Research Resource Databases and Publications

NIHU Repository
Cloud-based NIHU repository giving users comprehensive access to research papers from the six NIHU institutes

Researcher's Profile <http://nrd.nihu.jp/search?m=home&l=en>
Comprehensive database containing information on researchers throughout NIHU.

Portal site for Japanese Studies https://guides.nihu.jp/japan_links
English Resource Guide for Japanese Studies and Humanities in Japan.

NIHU Magazine https://www.nihu.jp/en/publication/nihu_magazine
A bilingual (Japanese and English-language) publication that covers topics such as the latest research trends, results and activities at NIHU.

NIHU Symposiums

NIHU organizes symposiums for the general public in order to share the comprehensive human culture related research resources and results it has accumulated.

30th: "Rediscovering the Use and Value of Japan-Related Resources Recovered in the West," Jun, 2017

31st: "Ecohealth: Healthy Living and the Environment," Feb, 2018

32nd: "How transdisciplinary research facilitates informatics and humanities research," Feb, 2018

Industry-Academia Collaborations

NIHU collaborates with industry and other partners to give back its fruits of research to society.

Joint symposium with Ajinomoto Foundation for Dietary Culture, Jan 2018

Joint lecture with Otemachi Academia, Mar 2018

NIHU Interactive Communication Initiative

We aim to pioneer a "visualization and advancement cycle of cutting-edge research at museums and exhibits"; which is about visualizing state-of-the-art research on human culture in museum contexts and exhibits and promoting research through the cooperation of multiple fields, academia and society. This program is run by NIHU's six institutes in collaboration with universities and research institutions across Japan.

Inter-University Network Project on Preservation of Historical and Cultural Resources

We promote document survey and data recording, the establishment of a wide support system, historical and cultural materials conservation projects that preserve materials and study preservation methodologies. Furthermore, we aim to inherit and build historical cultures within local communities by making use of materials, developing educational programs, and disseminating information in Japan and overseas. This program is run by NIHU (lead organization, Rekihaku), Tohoku University, Kobe University at the core, and in cooperation with "Shiryo Net," a university based research activity to preserve old historical documents.



A joint press conference with Tohoku University and Kobe University to announce the "Inter-University Network Project on Preservation of Historical and Cultural Resources."

Liberal Arts Communicator Training Program

In the 2017 academic year, we have started a training program for humanities researchers that fosters their skills to communicate humanities research to a lay audience and become specialists that will be able to incorporate and address societal needs in their research. Our liberal arts communicators will utilize various resources and outlets to bridge between academia and society. Through this program we hope to develop talented researchers who will contribute to the advancement of humanities, foster industry-academia relations and raise the visibility of our research activities.



Presentation by a researcher enrolled in the liberal arts communicator training program at Miraikan (The National Museum of Emerging Science and Innovation).

Industry-Academia Collaborations

We collaborate with industry and other partners to give back the fruits of research to society. In the 2017 academic year, we collaborated with Kyushu University and other institutions to organize the 30th NIHU symposium, jointly organized a symposium with Ajinomoto Foundation for Dietary Culture and Cookpad Inc., jointly organized a lecture with YOMIURI ONLINE and CHUOKORON-SHINSHA, Inc. and held a joint press conference with Tohoku University and Kobe University.

Graduate School Education

Graduate University for Advanced Studies (Sokendai) is one of the parent institutions of NIHU's four humanities research institutes. It offers five graduate (postdoctoral) courses designed to take advantage of its resources and provides an array of specialized training for researchers.



Joint symposium with Ajinomoto Foundation for Dietary Culture. "What Japanese pre-modern texts reveal about the 'Edo cuisine' and life style."

The National Institutes for the Humanities (NIHU) have coordinated with Japanese and overseas universities, research institutes and communities to manage Transdisciplinary Projects to contribute to resolving the contemporary challenges for six years from the fiscal year 2016.Minpaku is in charge of the following projects:

Multidisciplinary Collaborative Projects:
Change of Local Communities and Reconstruction of Community Cultures
after Disasters in Japanese Archipelago

Minpaku Unit “Rediscovering Local Cultures and Constructing a System of Representation
in the Japanese Archipelago”

Representative: HIDAKA Shingo

The Japanese Archipelago is long from North to South, with residential areas spread over seashore areas, plains, and mountainous areas. This topology has nurtured diverse local cultures, each adapted to its own natural environment. These local cultures have lost some of their unique characteristics in social transformations due to globalization. This has given rise to an impression cultural standardization across all of Japanese society, at least on the surface. In addition, rebuilding after many recent large-scale natural disasters forced communities to relocate, merge, or otherwise reorganize themselves, reconstructing their local cultures that had been passed down across generations.

In this research, we focus on local cultures and identify what cultures are passed down and new cultures being constructed. We discuss how studies of human cultures can contribute contribution to the society now and into the future.

More specifically, we are pursuing three research themes namely, “Rediscovery of Local Cultures,” “Conservation of Local Cultures,” and “Utilization of Local Cultures.” Our aim is to rediscover local cultures that are buried under the surface at ordinary times, and to build a system that represents local cultures in a way that is meaningful for community residents and the external society.

Multidisciplinary Collaborative Projects,
New Developments in Ecohealth Research in Asia,

Minpaku Unit “The Constellation of Food and Foodways in Human and Natural History”

Representative: NOBAYASHI Atsushi

The purposes of our project are to research the social function and the history of food and foodways of humans, and to study the principles of coexistence and conflict concerning food among them. We recognize the concept of food and foodways as being a cultural system in human and natural history.

Food is indispensable to the maintenance of life, and foodways is embedded deeply in culture and economy. Knowing the mass production and disposal of food, world population growth and the increasing numbers of those existing at starvation levels, we can see that food and foodways in modern society is far from being ecologically adaptive.

Food issues will be connected in a multidisciplinary human ecological perspective that examines the function of food, and natural history, which examines the role of food in human societies. It will develop a model of food and foodways in the human future.

This work is a part of the “New Developments in Ecohealth Research in Asia” project, promoted and led by the Research Institute for Humanity and Nature. “Ecohealth” is a new approach to the concept of “health”, which has been analyzed previously from a medical perspective. We shed a new light on the relationships among livelihood, living environment, and occupations, dietary habits in the modern era of rapid social transformation, and environmental change.

Network-based Projects: Northeast Asia
Regional Structure and Its Change in Northeast Asia: in Search of the Way
to Coexist from the Point of View of Transborderism

Central hub for the study project covering
“The Structure of Natural Environment and Cultures / Civilizations”

Representative: IKEYA Kazunobu

The Center for Northeast Asian Area Studies at the National Museum of Ethnology (Minpaku) consists mainly of the researchers working in cultural anthropology, ethnology and adjacent domains within Minpaku, and archaeological researchers of its partner institution, National Museum of Japanese History. The Project focuses on the movement of people and exchange of materials, introduce and influence of the political and economic systems in Northeast Asia, and to clarify the structures and transformations of the natural environment, cultures, and civilizations from prehistory to the present.

Northeast Asia for the purpose of the Project refers to the vast area covering Siberia and Far East Region of Russia, Mongolia, Korean Peninsula, China, and Japan. Up until now, researches have been done within the framework of each nations, but this project is a novel attempt to comprehend the region as a whole. As central hub, the Center promotes the Project in partnership with other organizations, namely, Slavic-Eurasian Research Center/ Hokkaido University, Center for Northeast Asian Studies/ Tohoku University, Center for Far Eastern Studies / University of Toyama, Institute for North East Asian Research/ The University of Shimane, and Waseda Institute of Contemporary Chinese Studies/ Comprehensive Research Organization of Waseda University.

Network-based Projects: Modern Middle East
Towards a Pluralistic and Multi-Valued Society: People and Cultures
of the Middle East in the Age of Global Change

Central hub for the study project covering
“The Transformation of Cultural Resources and the Reconfiguration of the Personal Sphere
in the Modern Middle East”

Representative: NISHIO Tetsuo

The Area Studies Project for the Modern Middle East aims to develop new methodologies for Middle East Studies that would allow us to conceptualize the ways in which individuals related to the world. In the age of the global transformation of nature, society, and media, how do the individuals of the Middle East obtain information, accumulate knowledge as well as utilizing them as resources? We strive to examine the resocialization of individuals in relation to the ways in which they create their social spaces through inclusion and exclusion of multiple values.

Our center was established in April 2016 as a central hub to coordinate the project and investigates on the topic of “The Transformation of Cultural Resources and the Reconfiguration of the Personal Sphere in the Modern Middle East.” Personal encounters with unknown people, places, and information play an important role in shaping the life-worlds of those who live in the Middle East. We try to clarify the attributes of this personal sphere: 1) where does the boundary between the personal and the public lie? 2) how do personal spheres connect to form communities or world views? 3) in what ways do cultural resources reflect the reconfiguration of the personal sphere? In the course of this 6-year project, we will send research missions, host foreign researchers, conduct international symposia, develop learning kits, plan exhibitions, and publish our results in collaboration with our partner institutions.

Network-based Projects: South Asia
Structural Transformation in Globalizing South Asia – Integrated Area Studies
for Sustainable, Inclusive and Peaceful Development

Secondary hub: Research Topic “South Asian Cultures and Societies”

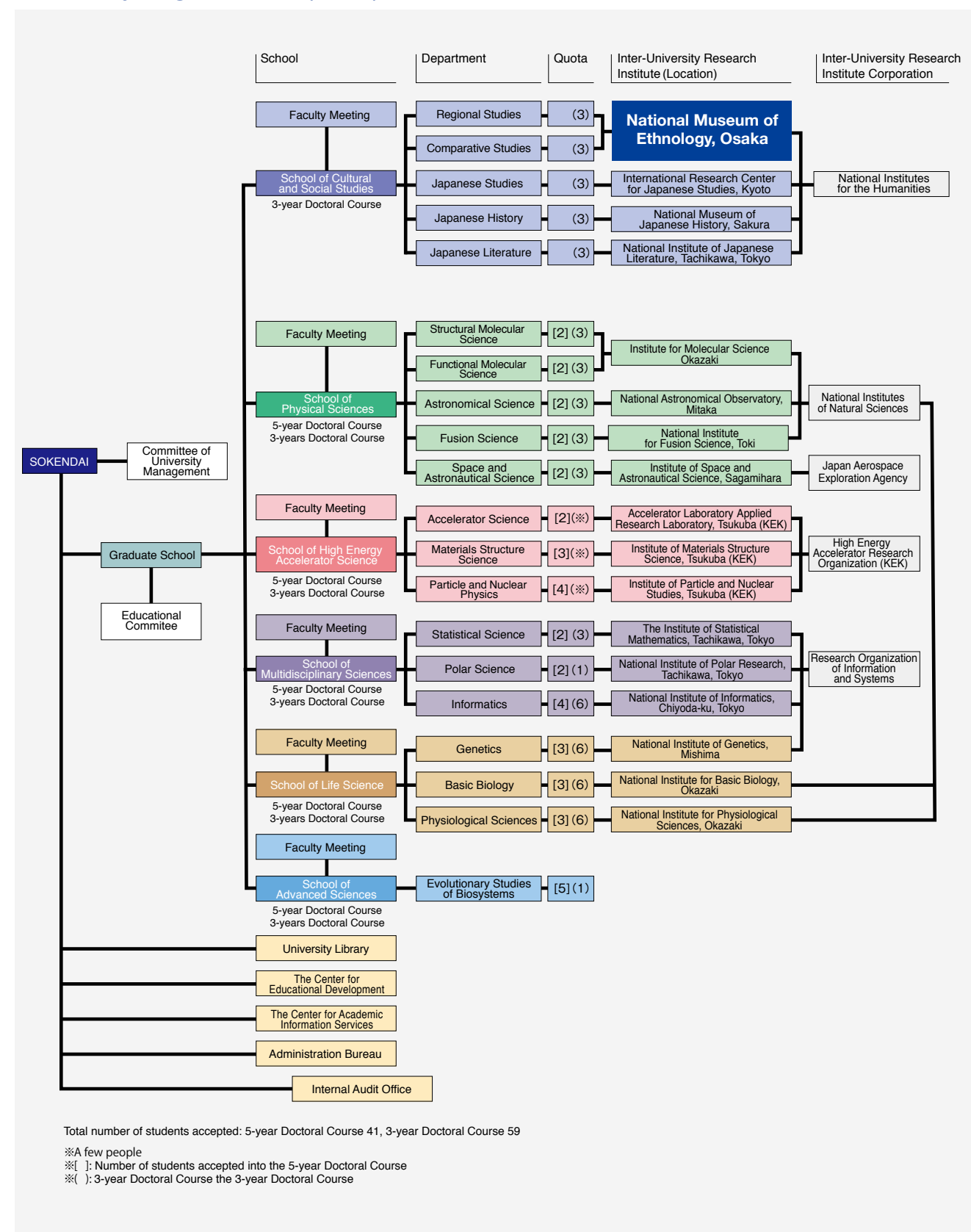
Director : MIO Minoru

The South Asian region is currently undergoing significant transformation due to rapid economic development, which aggravates a range of existing socio-cultural, economic, and political problems while also giving rise to new ones. International tensions within the region and beyond are also increasing. In the context of accelerated globalization, Japan cannot ignore such tensions. This project aims to encourage solution-oriented approaches to the real world problems through the network of research centers at Kyoto University, National Museum of Ethnology, University of Tokyo, Hiroshima University, Tokyo University of Foreign Studies, and Ryukoku University.

The center at the National Museum of Ethnology functions as the secondary hub, especially advancing the international activities of this project. We are also attempting to delineate characteristically South Asian forms of social resilience by understanding the dynamics of the global circulation of people, cultures, and values, as well as by analyzing the particular characteristics of South Asian social relationships that have been maintained amidst rapid social change. Through this research, we intend to contribute to the academic and social discourse on the social risks resulting from meteoric globalization.

SOKENDAI (The Graduate University for Advanced Studies) is a national university offering a graduate program only. By taking advantage of the close network among the 17 Inter-University Research Institutes and the joint research opportunities thus afforded, and by promoting interaction among different schools and departments within SOKENDAI and also among universities and graduate schools both domestic and overseas, SOKENDAI aims to develop researchers with the ability to think from broad, comprehensive, and global perspectives.

University Organization (2018)



The Graduate University for Advanced Studies

Our museum accommodates the School of Cultural and Social Studies (with the Department of Regional Studies and the Department of Comparative Studies) of SOKENDAI (The Graduate University for Advanced Studies). Both of these departments conduct educational and research activities taking advantage of the human resources and advanced research environment of the Inter-University Research Institutes, which are playing a leading role in promoting joint research projects around Japan.

Purpose of the Departments of Regional Studies and Comparative Studies

Educational studies are composed of lectures and instruction by individual faculty members and shared seminars by multiple faculty members. Two types of shared seminars are offered: the basic seminar called the “Freshman Seminar” which is mainly for freshmen and the “Thesis Seminar” for sophomores and more advanced students focusing on instruction for thesis writing. Common subjects (advanced theory) on cultural anthropology and ethnology are also conducted primarily for first year students.

Under student exchange agreements, credits for these courses can be transferred among the Graduate School of Asian and African Area Studies at Kyoto University, the Graduate School of Human Sciences at Osaka University, the Graduate School of Intercultural Studies and the Graduate School of Human Development and Environment at Kobe University, and the Graduate School of Anthropology at Kyoto Bunkyo University.

In most cases, students work on preparation for fieldwork during the first year, and proceed to fieldwork in the second or subsequent years under the supervision of their advisors. Then, after finishing their fieldwork, the students complete their dissertations under the individual guidance of their advisors and through participation in the “Thesis Seminar”. The purposes of educational studies in both departments are as follows:

- (i) Original research on cultural anthropology and ethnology
- (ii) Writing a thesis based on data from long-term field work
- (iii) Training researchers with broad horizons and a deep sense of humanity

Number of Students as of April 1, 2018

Quota and Current Number of Students

Department	Quota	Current Students			Total
		First year	Second year	Third year	
Regional Studies	3	6	3	7	16
Comparative Studies	3	1	1	13	15
Total	6	7	4	20	31

Number of Doctoral Degrees Awarded

Academic Year	Regional Studies		Comparative Studies		Total
	By Completing Doctoral Course	By Submitting Dissertation	By Completing Doctoral Course	By Submitting Dissertation	
1991			1		1
1992					
1993			1	1	2
1994	2		1		3
1995	2		1		3
1996		3			3
1997	3		4		7
1998	4	2			6
1999					
2000	2		2	1	5
2001	1	1	2	1	5
2002	1	1		2	4
2003					
2004	2	3			5
2005	4	2		2	8
2006	2		3		5
2007	2	1	3		6
2008	1		1		2
2009		1	1	1	3
2010	2		2	3	7
2011	3		1	1	5
2012	1	1	1	1	4
2013			1	1	2
2014	2	1	2		5
2015	3	1			4
2016	1	1	1		3
2017	1		1		2
Total	39	18	29	14	100

Acceptance of Overseas Researchers under the RONPAKU (Ph.D. Dissertation) Program

Grantees of the RONPAKU (Dissertation Ph.D.) Program offered by the Japan Society for the Promotion of Science (RONPAKU fellows) conduct their research under the supervision of advisors in the respective department of the Graduate School. Currently, one overseas researcher is in the program.

General Information

Hours and Closing Days

Hours	10:00 a.m. to 5:00 p.m. Entry permitted up to 4:30 p.m.
Closing days	Every Wednesday. When a national holiday falls on a Wednesday, the Museum is closed instead on the following day. The Museum is closed from December 28 until January 4 for the year-end and New Year period.

Admission Charges

	Individual	Groups (20 persons or more) and visitors eligible for discount *
Adults	¥420	¥350
Students		
High school, college and university	¥250	¥200
Children		
Primary and junior high school	Free	

An additional charge may be necessary for special exhibitions.
Admission is free every Saturday for high school students.
Admission is free for holders of a Disabled Person's Handbook and one accompanying person per holder.
Admission is free for members of the Japanese Society of Cultural Anthropology, International Council of Museums, and Japan Association of Museums. (a membership certificate is required).
The following visitors qualify for a discounted admission charge (please present documentation); 1) Groups of 20 or more; 2) University, college, graduate, and vocational school students who use the Museum as part of their course work, and high school students preparing class reports etc.; 3) those who have visited the Museum within the previous three months; 4) Visitors aged 65 and over (ID required)
(If you purchase a regular Museum ticket at the entrance to the Natural and Cultural Garden, the difference will be refunded at the Museum.)

Contact Information

National Museum of Ethnology
10-1 Senri Expo Park, Suita, Osaka 565-8511, Japan
Tel: +81-6-6876-2151 Fax: +81-6-6875-0401

Website

http://www.minpaku.ac.jp/english/

Information and Services

The Minpaku Associates Tel: +81-6-6877-8893 (Senri Foundation)
Minpaku Associates (*Minpaku Tomonokai*) is an association of interested individuals and families who are supporters of the the museum.
With the cooperation of our researchers, ethnological tours, hands-on seminars and lectures are designed for this group by Senri Foundation, which also publishes a magazine *Kikan Minzokugaku* [Ethnological Quarterly] for distribution to them.

Museum Shop (Hours: 10:00 a.m. to 5:00 p.m.) Tel: +81-6-6876-3112
Visitors can buy folk crafts from various parts of the world and books on anthropology and ethnology in the museum shop.

Restaurant (Hours: 11:00 a.m. to 4:30 p.m. Last Orders: 4:00 p.m.) Tel: +81-6-6876-1293
With 130 seats (110 inside the restaurant and 20 on the terrace) available, our restaurant accepts reservations from groups of various sizes: from a few individuals to parties of a larger number of people. Group customers can also reserve our box lunches.



Minpaku Associates Desk



Museum Shop



Restaurant



"Ethnological Study Tours Overseas" organized by Minpaku Associates (*Minpaku Tomonokai*)

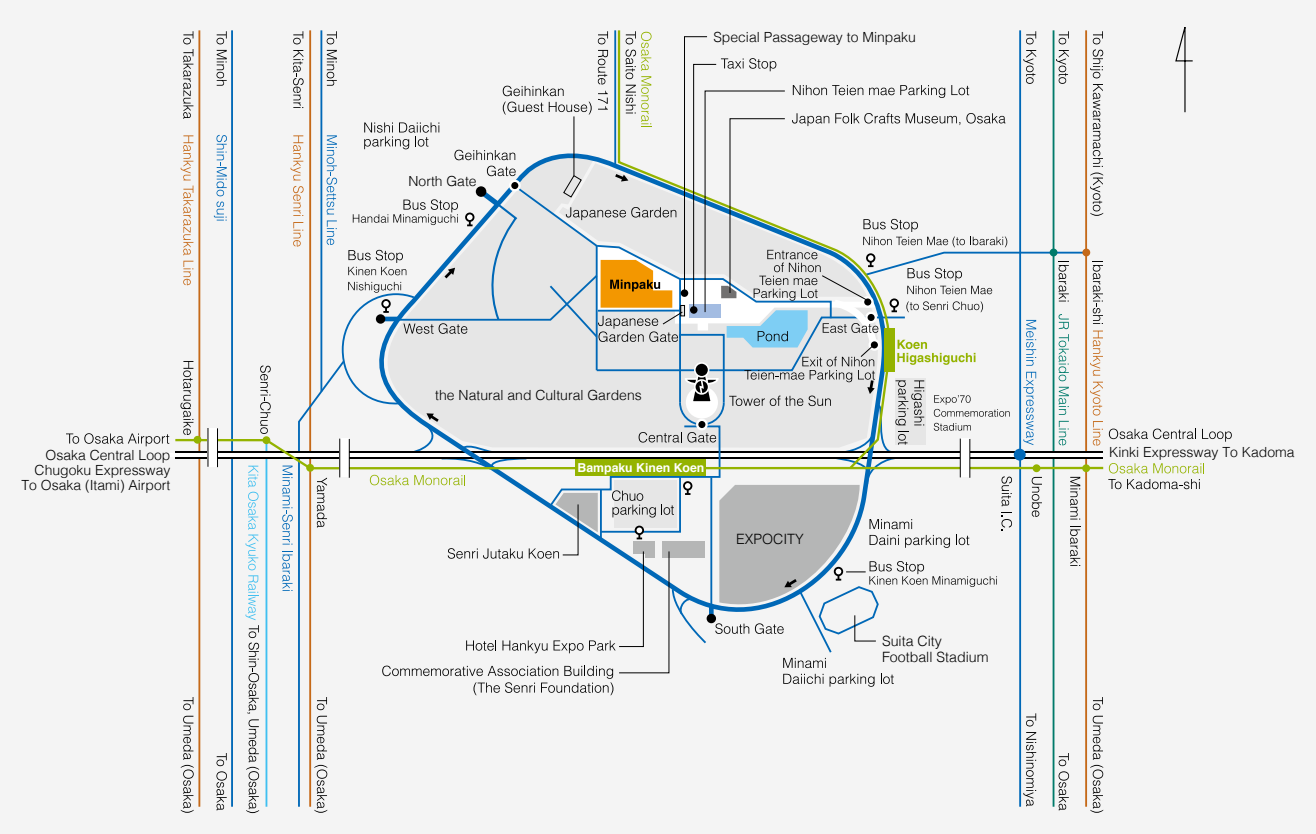


Kikan Minzokugaku [Ethnological Quarterly]

Access Information

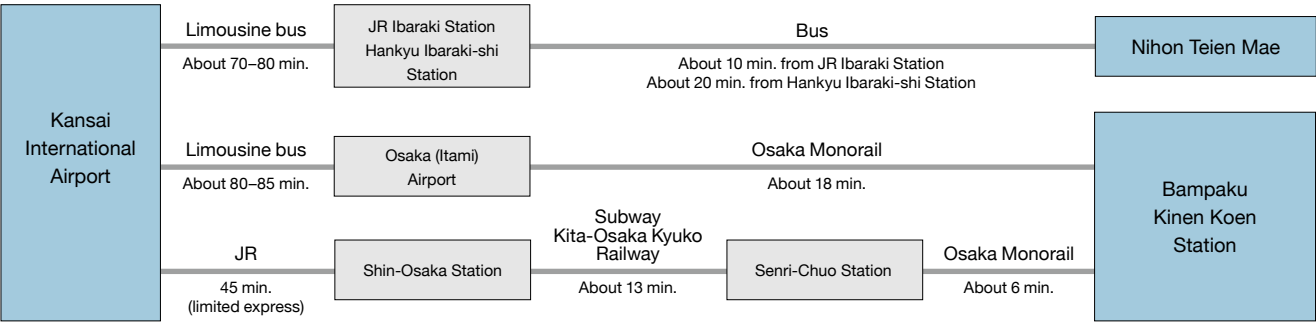
- By Osaka Monorail, from Bampaku Kinen Koen Station or Koen Higashiguchi Station it is about a 15-minute walk to the Museum through the Natural and Cultural Garden.
 - From Hankyu Ibaraki-shi Station, and JR Ibaraki Station by bus, alight at Nihon Teien Mae, from which it is about a 13-minute walk to Minpaku.
 - If you visit the Museum by car, please park at one of the parking lots for the Expo' 70 Commemoration Park. From the nearest pay parking lot, in front of the Japanese Garden, it is about a 5-minute walk to the Museum. Please enter the Museum through the side door adjacent to the Japanese Garden Gate.
 - By taxi, you will alight in the parking lot in front of the Japanese Garden. Please enter the Museum through the side door adjacent to the Japanese Garden Gate.
- * For high school students, college students, and general visitors: please buy a museum ticket at the ticket windows of the Natural and Cultural Gardens (center, west, or north entrance). Ticket holders can pass through the garden at no charge.
* Say that you are going to Minpaku at the manned window of the garden (center, west, or north entrance) to receive a pass if elementary and junior high school students pass through the Natural and Cultural Gardens (paid area).
* Visitors can visit the Museum from the east entrance without going through the Natural and Cultural Gardens (paid area).
* If you visit the Natural and Cultural Gardens (paid area), you need to buy an entry ticket.

Map



Major Access Routes

Access routes to the Museum from airports and major railway stations are as shown below.



Survey and Guide
2018-19



National Museum of Ethnology

10-1 Senri Expo Park, Suita, Osaka 565-8511, Japan

