

# National Museum of Ethnology, Japan

Survey and Guide

2020-21







# National Museum of Ethnology, Japan

## Survey and Guide for 2020-21

(Fiscal year April 1, 2020–March 31, 2021)

### Contents

Preface	1
Purpose and Functions	2
Organization	3
Governing Body/Research organization	3
Center for Cultural Resource Studies	7
Center for Academic Research Development	7
Research Activities	8
Joint Use of the Museum	22
Joint-Use Facilities for Scientific Research	22
Library	23
Materials	24
Exhibitions	26
International Cooperation	34
Partnership between the Museum and Society	35
Data Collection	39
History	40
Former Directors-General/Professors Emeriti	41
Facilities	43
Cooperative Agreements	44
Materials and Databases	46
National Institutes for the Humanities	50
Transdisciplinary Projects	52
SOKENDAI (The Graduate University for Advanced Studies)	54
General Information	56



Cover: Barkcloth (*tapa*), Oceania

### Preface

In 1974, the National Museum of Ethnology, Japan (Minpaku) was founded as an Inter-University Research Institute in the field of cultural anthropology and ethnology, equipped with one of the world's largest museum facilities. It opened to the public in 1977 at the site of the 1970 International Exposition located in Senri, Osaka.

Each researcher at Minpaku engages in field work in various parts of the world to promote investigative study of the diversity and commonality of human culture and the dynamic state of society on a global scale. To date, approximately 345,000 objects have been collected at Minpaku, constituting the world's largest ethnographic collection accomplished after the second half of the 20th century. Two departments of the School of Cultural and Social Studies of the Graduate University for Advanced Studies (SOKENDAI) are also based in the museum. The National Museum of Ethnology is regarded as the only anthropological institution in the world equipped with research, education and museum facilities which are able to cover the entire globe.

Human civilization today is facing the greatest turning point in several centuries. Up until recently, the group that was regarded as central watched and ruled in a unilateral manner the group regarded as peripheral. The dynamics of this power relationship seem to be changing now. These days, we witness that contacts, interactions and amalgamation, including the creative and the destructive, are occurring worldwide in a bilateral manner between those two entities, one used to be regarded as central and the other peripheral.

In 2020, we have been forced to confront a situation never experienced before by humanity: the almost simultaneous spread of the novel coronavirus disease (COVID-19) pandemic around the world. This situation has compelled humans to review customary practices and rules that had been regarded as normal in daily life, i.e., the formation and state of every institution and standard established in modern history. The significance and the reasons for existence of such institutions and standards have been re-examined. A sense of discrimination latent in society has surfaced, and new developments that divide the world are emerging.

I believe that the wisdom of cultural anthropology is needed now more than ever to establish a world where, while respecting diverse cultures, we will be able to live together by bridging the gap between different languages and cultures. The extremely grave responsibilities attach to Minpaku as an international core hub of anthropology.

Minpaku has been intensely promoting special research entitled "Contemporary Civilization and the Future of Humanity: Environments, Culture and Humans". This international joint research effort has been designed to tackle the challenges facing humanity, including infectious diseases, through multifaceted approaches spanning various fields, and to find guiding principles for the future. We have already begun reporting the achievements from research in Japan and abroad.

Having completed the comprehensive renewal of the permanent galleries in 2017, the museum is moving forward to the next step. In FY2020, we launched a full-scale operation of new-generation exhibition digital guide and a new Videotheque system linked to this guidance.

In addition, Minpaku is promoting the "Info-Forum Museum" project. The project aims to share the information concerning its collection such as artifacts, photos and videos, with not only researchers and users at home and abroad, but also local communities as original producers (for photos, with local communities as subjects), and put newly gained insights into the database for subsequent sharing, leading ultimately to new joint research, joint exhibition, and community activities.

Through these research and museum activities, the National Museum of Ethnology, Japan is trying to establish, in a more evolved and substantial manner than ever before, the "forum of wisdom". That is, a place where diverse people will enjoy having intellectual interactions, sharing their ideas and engaging in collaborative works.

I sincerely ask for your continued cooperation and support in implementing our activities.



YOSHIDA Kenji  
Director-General  
National Museum of Ethnology, Japan



Purpose and Functions

Purpose

The National Museum of Ethnology conducts anthropological and ethnological research and aims to promote a general understanding and awareness of peoples, societies and cultures around the world through the collection and conservation of ethnographic materials and public exhibitions. Minpaku was established in 1974 as an Inter-University Research Institute under the “Law to amend part of the National School Establishment Law” (No. 81, 1974). In April, 2004 it made a fresh start as a member of the National Institutes for the Humanities, under the “National University Corporation Act” (No. 112, 2003).

Functions

Research Institute	The Museum functions as a research institute equipped with a museum. It serves as a research center for anthropology and ethnology, providing information and research results to academic communities and the general public through publications, exhibitions, and other means.
Joint Research	As an Inter-University Research Institute, the Museum supports and organizes joint research projects with researchers from other academic institutions. Materials collected and stored in the Museum are used widely by those researchers.
Information Center	Over the years, the Museum has collected and maintained a great variety of ethnological research materials. These include artifacts, audiovisual records, books and other forms of research data. The Museum is also a repository for the Human Relations Area Files (HRAF). Information about these materials is provided to researchers via computer databases.
Exhibitions	The research results of the Museum are open to the public through exhibitions. Minpaku emphasizes the close-linkage between research and exhibition as a basic policy, and its academic staff participate in planning and organizing exhibitions. The main halls display regional and cross-cultural exhibitions. The former displays cultures and societies in major regions, such as Oceania and the Americas, whereas the latter emphasizes cultural elements such as music and language, which are shared across human societies. Thematic Exhibitions are also held occasionally. These focus on rapidly changing global situations and feature current research in cultural anthropology and ethnology. The Museum also presents, Special Exhibitions in spring and/or fall, in the Special Exhibition Hall.
Social Contributions	Also with the objective of presenting its latest research findings to the public, the Museum offers academic lecture programs, seminars, the Weekend Salon, special lectures and performances, film shows, and various workshops. The Museum also organizes intensive courses on museology and various projects for other museums as part of its international cooperation activities.
Graduate Programs	The School of Cultural and Social Studies of SOKENDAI (The Graduate University for Advanced Studies), based at the Inter-University Research Institute, is located at the Museum. It has two courses: Regional Studies and Comparative Studies. These Departments offer research training programs leading to the Ph.D. degree with the aim of producing unique professional scholars. The Museum also cooperates with other universities in training graduate students enrolled in doctoral programs.



Organization

Governing Body

as of October 1, 2020

Director-General Sixth Director-General April 2017– <b>YOSHIDA Kenji</b> Representation of Culture in Museum	Deputy Director-General (in charge of research, exchange and Institutional Research (IR)) <b>HIRAI Kyonosuke</b> Professor, Department of Globalization and Humanity	Deputy Director-General (in charge of planning and coordination) <b>SEKI Yuji</b> Professor, Department of Modern Society and Civilization	System Coordinator <b>NISHIO Tetsuo</b> Professor, Department of Globalization and Humanity	Audit Office <b>SHIMADA Kenji</b> Director
--	---	---	---	--

Administrative organization

as of October 1, 2020

Office of Administration <b>SHIMADA Kenji</b> Director	Office of Information and Documentation <b>SEKI Yuji</b> Director	<b>SHIMADA Kenji</b> Deputy Director		
General Affairs Section <b>TSUNEYOSHI Yuji</b> Head	Research Cooperation Section <b>NISHIYAMA Kazuhiko</b> Head	Finance Section <b>MAEDA Kazuyuki</b> Head	Information Planning Section <b>KANEKUNI Seiji</b> Head	Information Systems and Services Section <b>IMANAKA Hiroyuki</b> Head

Board of Advisors

as of October 1, 2020

The advisors discuss the Museum’s management, and operational issues of critical importance, at request of the Director-General.

<b>DEGUCHI Akira</b> Vice Presidents,Shimane University	<b>SANO Chie</b> Honorary Researcher, Center for Conservation Science Independent Administrative Institution Tokyo National Research Institute for Cultural Properties	<b>HIRAI Kyonosuke</b> Deputy Director-General (in charge of research, exchange and (IR)), National Museum of Ethnology/Director,Center for Academic Research Development	<b>SEKI Yuji</b> Deputy Director-General (in charge of planning and coordination), National Museum of Ethnology/Director, Office of Information and Documentation
<b>GOTO Akira</b> Professor, Faculty of Humanities, Nanzan University	<b>TOMIZAWA Hisao</b> Specially Appointed Professor, School of International Relations, University of Shizuoka	<b>IIDA Taku</b> Director, Department of Modern Society and Civilization,National Museum of Ethnology	<b>KASHINAGA Masao</b> Professor, Department of Cross-Field Research, National Museum of Ethnology/Course-Director, Department of Regional Studies, School of Cultural and Social Studies, SOKENDAI (The Graduate University for Advanced Studies)
<b>KUBOTA Sachiko</b> Professor, Graduate School of Intercultural Studies, Kobe University	<b>TOYOTA Yukio</b> Professor, Emeriti, Rikkyo University	<b>MIO Minoru</b> Director, Department of Globalization and Humanity, National Museum of Ethnology	<b>SONODA Naoko</b> Director, Department of Advanced Human Sciences, National Museum of Ethnology
<b>KURIMOTO Eisei</b> Vice Presidents, Osaka University	<b>YAMANASHI Toshio</b> Director, The National Museum of Art, Osaka	<b>NOBAYASHI Atsushi</b> Director, Center for Cultural Resource Studies, National Museum of Ethnology	
<b>MATSUDA Motoji</b> Professor, Graduate School of Letters, Kyoto University	<b>HAYASHI Isao</b> Director, Department of Cross-Field Research, National Museum of Ethnology		

External Evaluation Committee

as of October 1, 2020

The committee meets to inspect and evaluate the Museum’s research and educational activities at request of the Director-General.

<b>ADACHI Jun</b> Deputy Director General, National Institute of Informatics	<b>IKEDA Hiroyuki</b> President, Toyo Tec company Limited	<b>MIZUSAWA Tsutomu</b> Director, The Museum of Modern Art, Kamakura & Hayama	<b>YAMAGIWA Juichi</b> Former President, Kyoto University
<b>HORII Yoshitane</b> Advisor, KANSAI. OSAKA 21st Century Association	<b>MUTO Megumi</b> Deputy Director, JICA Ogata Sadako Research Institute for Peace and Development	<b>TANAKA Masakazu</b> Vice-president, Professional Institute of International Fashion	<b>YAMAMOTO Matori</b> Professor, Faculty of Economics, Hosei University

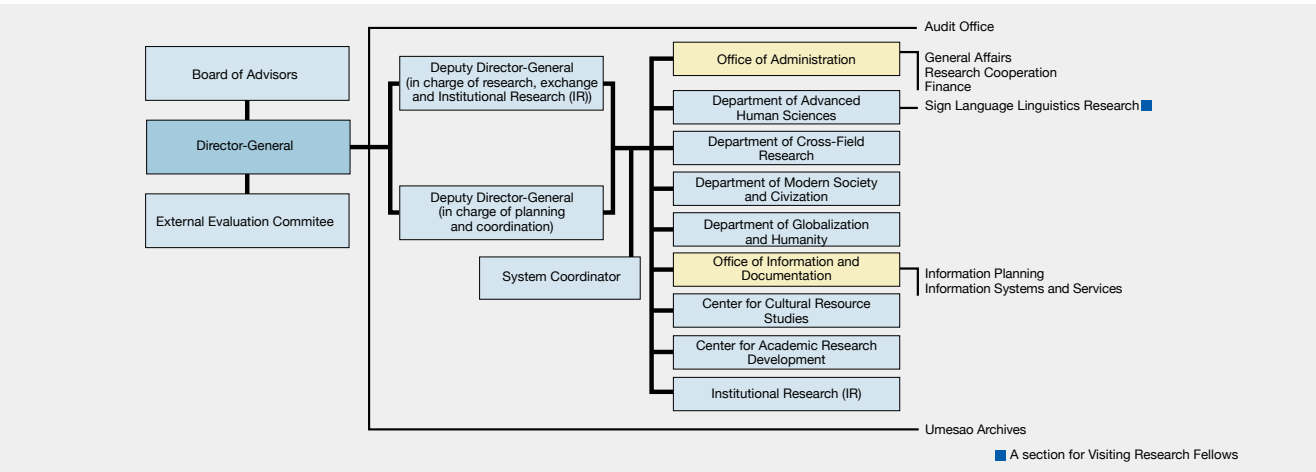
Organization Consists

Under the Director-General, two Deputy Directors-General (one in charge of research exchange and Institutional Research (IR), and one in charge of planning and coordination) are appointed to oversee the Department of Advanced Human Sciences, Department of Cross-Field Research, Department of Modern Society and Civilization, Department of Globalization and Humanity, Center for Cultural Resource Studies, Center for Academic Research Development, Institutional Research (IR) Office, and Umesao Archives. Our administrative organization consists of the Audit Office, Office of Administration (General Affairs Section, Research Cooperation Section and Finance Section) and Office of Information and Documentation (Information Planning Section and Information Systems and Services Section).

Our research organization was changed in April 2017, to respond to the global-scale challenges of today’s world, pioneer new academic frontiers promote research projects leading to new value creation, and promote cross-field area studies firmly rooted in cultural anthropology and museum functions.

Organization Chart

as of October 1, 2020





Research organization as of October 1, 2020

Department of Advanced Human Sciences

SONODA Naoko Director

The purpose of this Department is to deepen theoretical research in the basic study of human sciences and thereby extract new academic challenges and create a new cross-disciplinary domain. In addition, we have established a Sign Language Linguistics Research Section supported by the Nippon Foundation as a subsidized research section, with the objectives of promoting the comparative studies of sign languages and vocal languages and develop new insights into human language.

Professors	Associate Professors	Assistant Professor	Sign Language Linguistics Research Section
DEGUCHI Masayuki Third Sector Research, Civil Society Studies	KAWASE Itsushi Visual Anthropology	OKADA Emi Ethnomusicology, South Asian Studies	Project Professor
FUKUOKA Shota Ethnomusicology; Southeast Asia, Indonesia	KIKUSAWA Ritsuko Linguistics, Austronesian languages	YOSHIOKA Noboru Linguistics, South Asian Studies	IIZUMI Naoko Implementation and Evaluation of Curriculum for Training and Evaluation of Academic Sign-language Interpreters
HIDAKA Shingo Conservation Science	MARUKAWA Yuzo Informatics of Association, Information Service for Cultural Assets		Project Assistant Professor
SONODA Naoko Conservation Science			SAGARA Keiko Sign Language Linguistics, Deaf Education

Department of Cross-Field Research

HAYASHI Isao Director

The Department aims to create a new domain of anthropological area studies by deepening regional ethnographic research in various regions of the world and establishing new foundations for cross-field research.

Professors	Associate Professors
HAN Min Social Anthropology; China	MATTHEWS, Peter J. Ethnobotany, Prehistory, Crop Plant Biogeography; Asia, Pacific
HAYASHI Isao Social Structure, Cosmology, Risk and Disaster; Melanesia, Polynesia, Japan	UDAGAWA Taeko Cultural Anthropology, Gender Studies; Italy, Mediterranean Europe
KASHINAGA Masao Ethnography of Southeast Asia; Vietnam, Tai Area	
	MATSUO-GOGATE Mizuho Cultural Anthropology, South Asian Studies
	NARA Masashi Cultural Anthropology, Chinese Studies
	OTA Shimpei Sociocultural Anthropology; Northeast Asia
	SHIMAMURA Ippei Cultural Anthropology, Mongolian Studies
	SHINMEN Mitsuhiro Science of Religion; Eastern Europe
	SUGASE Akiko Anthropology, Middle Eastern Studies

Department of Modern Society and Civilization

IIDA Taku Director

The Department aims to create a set of new values for responding to that challenges humanity faces today, and to envisage the future of civilization through interdisciplinary approach of looking into the future by way of the events of the past.

Professors	Associate Professors
IIDA Taku Ecological Anthropology, Fisher Studies; Madagascar, Japan	SAITO Akira Ethnohistory; Latin America
IKEYA Kazunobu Environmental Anthropology, Cultural Geography; Southern Africa, Japan	SEKI Yuji South American Archaeology, Cultural Anthropology
	SUZUKI Motoi Anthropological Perspectives on Development Assistance Evaluations
	FUJIMOTO Toko Cultural Anthropology, Central Asian Studies
	ONORintaro Marine Archaeology, Southeast Asian Studies
	TERAMURA Hirofumi Culture and Information Science, Archaeological Information
	UEBA Yoko Textile and Handcraft; South Asia, Middle East

Department of Globalization and Humanity

MIO Minoru Director

To create new values for responding to challenges that humanity faces today, the department and to envisage a global society through an interdisciplinary approach of taking a bird's eye view of the world by way of regional events.

Professors	Associate Professors
HIRAI Kyonosuke Economic Anthropology, Anthropology of Work; Southeast Asia	MORI Akiko Cultural Anthropology, Ethnography; Central Europe, Germany, Austria, Japan
MIO Minoru Religious Anthropology; South Asia, India	NISHIO Tetsuo Linguistics, Arab Culture; Middle East, North Africa
	NOBUTA Toshihiro Social Anthropology, Southeast Asian Studies
	SUZUKI Nanami Cultural Anthropology, Culture of Medicine, Life-design Studies, American and European Medieval Social History
	AISHIMA Hatsuki Social Anthropology; Islam, Middle East
	KAWAI Hironao Social Anthropology, Ethnological Studies of Han Chinese
	HIROSE Koujirou Japanese Religious History, Folklore
	MISHIMA Teiko Anthropology, International Migration; Senegal, West Africa
	SUZUKI Hideaki History of the Indian Ocean World, Swahili Society

Center for Cultural Resource Studies

NOBAYASHI Atsushi Director

The Center aims to plan and promote research projects that improve the sharing of cultural resources in an interdisciplinary and international manner.

Professors	Associate Professors	Assistant Professor
KISHIGAMI Nobuhiro (Joint Appointment) Cultural Anthropology, Inuit Studies; North America	SASAHARA Ryoji Folk Culture, Performing Arts; Japan	ITO Atsunori Social Anthropology, Native American Studies, Indigenous Arts and Intellectual Property Issues
NOBAYASHI Atsushi Ethnoarchaeology, Material Culture, Austronesian Cultures; East Asia, Formosa	YAMANAKA Yuriko Comparative Study of Traditions on Alexander the Great; West Asia, Iran	MINAMI Makito Ecological Anthropology; South Asia
		NIWA Norio Social Anthropology; Oceania
		SAITO Reiko Ainu and Northern Indigenous Peoples Studies, Material Culture; North Pacific Rim
		CHE Sohee Medical Anthropology, Northeast Asian Studies
		YAGI Yuriko Cultural Anthropology, Latin American Studies

Center for Academic Research Development

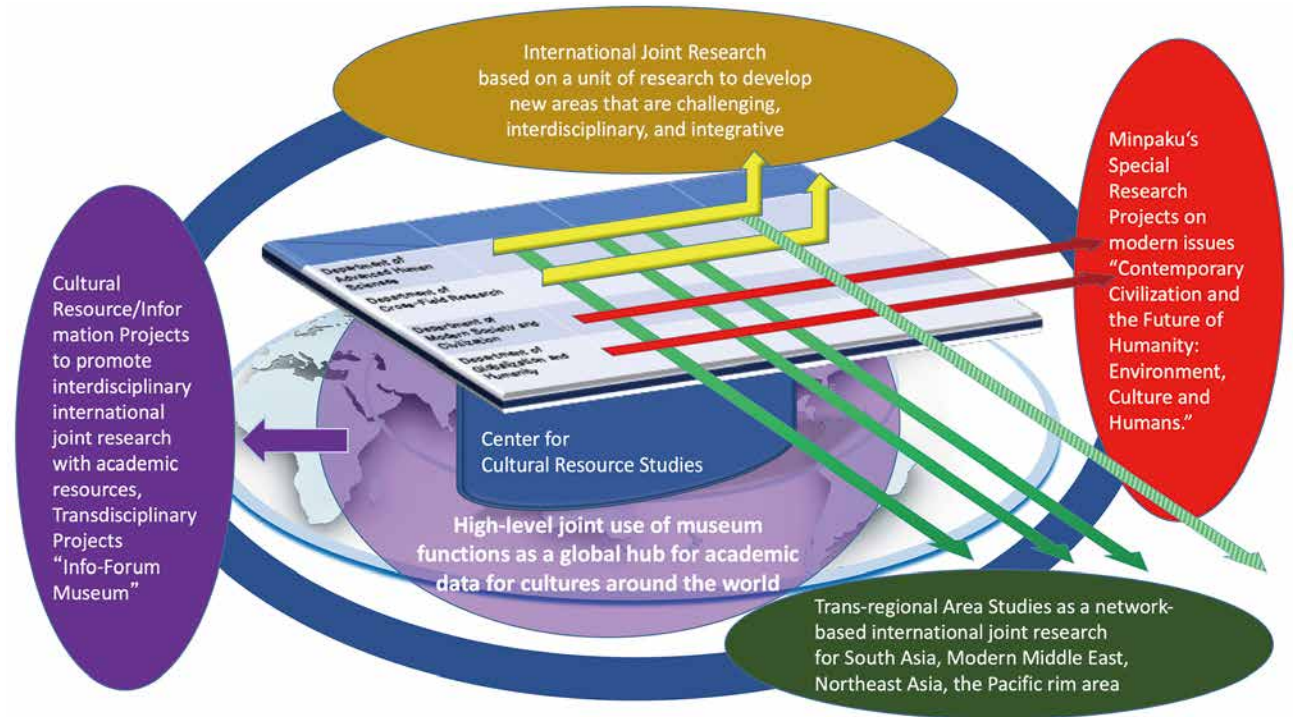
HIRAI Kyonosuke Director

The Center aims to plan and oversee the infrastructure enhancement and international and national strategies for research organizations to be used jointly to explore new domains.

FUKUOKA Shota Professor, Department of Advanced Human Sciences	NIWA Norio Associate Professor, Center for Cultural Resource Studies	SUZUKI Hideaki Associate Professor, Department of Globalization and Humanity
HAN Min Professor, Department of Cross-Field Research	SAITO Akira Professor, Department of Modern Society and Civilization	UDA Shuhei Associate Professor, Department of Modern Society and Civilization

Umesao Archives

IIDA Taku Director  
Professor, Department of Modern Society and Civilization



Visiting Researchers

Department of Advanced Human Sciences

Sign Language Linguistics Research Section  
(supported by the Nippon Foundation)  
(an affiliated section)

HARA Daisuke  
Professor, School of Engineering Toyota  
Technological Institute  
A Study on the Syllable Structure and Its  
Well-formedness in Sign Language

Department of Modern Society  
and Civilization

KONAGAYA Yuki  
Inspector General, Japan Society  
for the Promotion of Science  
Anthropology on Nomadism in Mongolia,  
Central and North Asia

Overseas Visiting Fellows

GOPALAN, Ravindran  
Professor, University of Madras (India)  
January 31, 2020 – April 15, 2020  
Reimagining minority music study in ethnomusicology

PRESTHOLDT, Jeremy Graham  
Professor, University of California, San Diego (U.S.A)  
July 1, 2020 – December 31, 2020  
African Consumer Cultures, Japanese Industry,  
and the Cultural Economy of the Twentieth Century  
Indian Ocean

SHI, Yingxin  
Associate Professor, Dalian Minzu University (China)  
April 1, 2020 – September 30, 2020  
Cultural issues at transferring legal and accounting  
system

Those who have been or will be in Minpaku in FY2020,  
as of April 1, 2020.  
(In alphabetical order by family name.)

Special Visiting Researchers

Department of Advanced Human Sciences

TSUJI Kunihiro  
Kunihiro Tsuji Design  
Construction of a next-generation exhibition  
guide system

Sign Language Linguistics Research Section  
(supported by the Nippon Foundation)  
(an affiliated section)

TAKEI Wataru  
Professor, College of Human and Social Science,  
School of Teacher Education, Kanazawa University  
Study on System Construction of Academic  
Sign Language Interpreter's Training

Department of Modern Society  
and Civilization

KAMEI Tetsuya  
Professor, School of Contemporary Sociology,  
Chukyo University  
An Anthropological Study on Cultural Resources  
and Ethnicity in Africa

Research Fellows

KAMINO Chie  
Support for museum society partnership

KIM Yujin  
Support for the shared use of academic information,  
particularly for the Info-Forum Museum

UEHATA Fumi  
Support for evaluation and IR

Project Research Fellows

HASHIMOTO Sachi  
Assistant work for the cultural resource planning project  
“Research on the Preservation and Management of  
Tangible Cultural Resources”

ISHIHARA Yamato  
RA work for Sign Language Linguistics Research Section  
(supported by the Nippon Foundation) – SILLR

ISHIYAMA Shun  
Digitalization and copyright procedures of photo materials

KAWAMURA Yukako  
Assistant work for the cultural resource planning project  
“Research on the Preservation and Management of  
Tangible Cultural Resources”

KOBAYASHI Naoaki  
Digitalization and copyright procedures of photo materials

PENG Yujie  
Research and study of ethnological materials and  
operational assistance for planned research

Center for Cultural Resource Studies

OSAKA Taku  
Hokkaido Museum Ainu Culture Research Center  
researcher  
Study of Ainu material culture in the First Half  
of 20th Century

Research Fellows,  
NIHU Center for Transdisciplinary  
Innovation(CTI)

Center for South Asia Studies

CHAYA Tomoyuki  
Project Assistant Professor

TANAKA Tetsuya  
Project Assistant Professor

Center for Modern Middle East Studies

KURODA Kenji  
Project Assistant Professor

Center for Northeast Asia Studies

KARASHIMA Hiroyoshi  
Project Assistant Professor

Center for Cultural Resource Studies

Object

The Center for Cultural Resource Studies was established on April 1, 2017, with the objective of improving access to cultural resources at the Museum for interdisciplinary and international research.

Development of Cultural Resource Study

The National Museum of Ethnology (Minpaku) owns about 340,000 artifacts, 70,000 items of video and sound resources, 670,000 books, and other research resources such as photographic archives, research database, and field note archives, survey papers, and other ethnological research papers left by cultural anthropologists and ethnologists. These are important cultural resources that relate to the humanity’s cultures and activities, and precious academic resources to reflect on the past, present and future of humanity. The Museum is undertaking projects to improve the shared availability of these cultural resources for interdisciplinary and international research, by publishing the research results and information on these cultural resources through a database called Info-Forum Museum, and through other media including Special Exhibitions, Thematic Exhibitions, and Traveling Exhibitions. The Center supports these research projects, and plans and promotes new projects.

Projects of FY2019

In FY2019, the Center supported the promotion of 4 database establishment projects and 6 database improvement projects based on the project to build the “Info-Forum Museum for Cultural Resources of the World,” and also planned an international workshop “Re-examination and Documentation of the Ainu Collection at Minpaku (NME): Database and its active use”. Concurrently, the Center assisted in the preparation and organization of the following exhibitions: special exhibitions (“Toys Expo: Children in Modern Japan”, “Regnum Imaginarium: Realm of the Marvelous and Uncanny” and “Treasure of the Indigenous Peoples”), thematic exhibitions (“Exploring 50 years of Livelihood and Landscape Change in Wadi Fatima, Saudi Arabia : Ethnographic Collections of Motoko Katakura, a Japanese Female Cultural Anthropologist” and “Arte Popular: Contemporary Expression of Mexican Crafts”), and collection exhibition (“Toshio Asaeda and his Galápagos : Expeditions and Exhibitions of Natural History in the 1930s”). Additionally, the center conducted research to improve the joint use of academic resources.

Projects of FY2020

In FY 2020, we will mainly pursue three projects.

Research Promotion and Support for Info-Forum Museum Building Project

Since FY2016, this Museum has managed an Institution-based Transdisciplinary Project of the National Institutes for the Humanities, entitled “Building of Info-Forum Museum for Cultural Resources of the World.” In FY2020, we expect to launch projects to establish databases, including “Africa Resource” and “Resource for Central and Northern Asia,” and projects for database improvement, including “Toy Resource” and “Micronesia Resource.” The Center studies standardization and multilingual translations of the artifacts and resources. It also supports the promotion of these projects through database building, editing and publication.

Research Promotion and Support for Special Exhibitions, Thematic Exhibitions,  
and Traveling Exhibitions Project

The Museum implements Special Exhibitions, Thematic Exhibitions, and Traveling Exhibitions, in order to publish its cultural resources and related research outcomes. In FY2020, the Museum will showcase: Special Exhibitions entitled “Treasures of Indigenous Peoples”, “Local cultures assisting disaster revitalization: 10 years since the Great East Japan Earthquake” and “Thematic Exhibition UMESAO Tadao's 100th Anniversary: The Front-runner of Intellectual Production”, co-hosted exhibition “Shifting Cultivation from the perspective of Komei Sasaki: from Itsuki-mura to the world” among others. The Center will promote the research that will enable these exhibitions and assist in the running of the exhibitions.

Research for Improving the Shared Availability of Cultural Resources

In the FY2020, we will research the ways to promote the interdisciplinary and international joint use of the cultural resources owned by this Museum, and effective ways to contribute to university education, academic research, dissemination of knowledge to the general public, and creation of cultures by their bearers.

Center for Academic Research Development

Object

The Center for Academic Research Development was establish in April 2017, and has assumed the research strategy functions that the Center for Research Development and the Center for International Academic Exchange formerly provided for: national and international shared use and joint research; enhancing infrastructure; and plan and oversee the national and international strategies for the shared use and joint research organizations pioneering new domains. The Center will reinforce the systematic research capabilities of each of our research departments and centers. More specifically, the Center engages in the activities required to promote internationally coordinated or joint research more strategically and systematically, including: improvement in the implementing organization of a research project based on shared use of resources; development, preparation and signing of (national and international) academic exchange agreements and the signing policies thereof; survey of overseas research trends; and information gathering and provision on external finances.



Minpaku Special Research Projects

Minpaku Special Research Projects are international joint researches implemented with a solution-focused approach to tackle urgent challenges facing our contemporary civilization. The Research started in fiscal year 2016 and will continue for the six years of the third mid-term objective period, under the umbrella theme of “Contemporary Civilization and the Future of Humanity: Environment, Culture and Humans.”

The Western civilization constructed with sciences, technologies, politico-economic systems, social organization, and ideologies that originated in modern Europe has been believed to influence many other countries and areas of the world. Likewise, scientific and technological developments have been believed to enrich the human lives and societies. However, we can also argue that the price for this civilization in the form of population explosion, environmental destruction, war, resource depletion, water shortage, air pollution, and more. This has been a huge burden on human societies. Environmental destruction and population explosion are major challenges that need to be resolved. The former is apparent in all aspects of human life, from living space, to food supply and biodiversity to wars, pollution, global warming and disasters. Population explosion is a two-sided problem: the world’s population will exceed 10 billion in 2060 and approach the Earth’s environmental carrying capacity of 12 billion in 2100. In developed nations, fewer births and aging population have brought about significant difficulties in the sustenance and survival of families and human groups. Against this backdrop, we position the Special Research as research focusing on the analyses of, and solutions to, challenges faced by contemporary human societies. It is necessary to, hypothesize cultural phenomena that way directly and indirectly cause global-scale changes in environmental problems and the world’s population, and to rethink contemporary civilization from the point of view of ‘wisdom’ of local communities that have responded to the civilizations. The aim is to answer the question on how we could create, from the conventional (traditional) set of values, a society that guarantees the coexistence of multiple sets of values and to present a vision of a future focused on the solutions of the problems that the human societies can select, by approaching the research subject as a contemporary system of problems in the multi-tier living space comprising the global space, community space, and societal space.

List of Minpaku Special Research Projects FY2016 - FY2021

Umbrella Theme “Contemporary Civilization and the Future of Humanity: Environment, Culture and Humans”

Theme Category: Environment

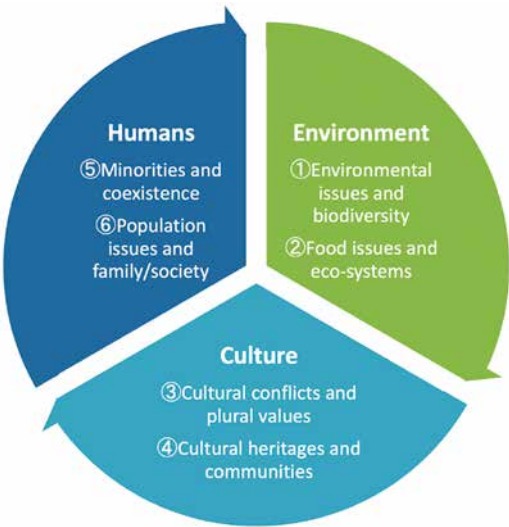
Project Leader	Project Title	Category	Project Period
IKEYA Kazunobu KISHIGAMI Nobuhiro	<a href="#">Historical Ecology of Biocultural Diversity: Use and Conservation of Endangered Animals, Plants, and Habitats</a>	①Environmental issues and biodiversity	July 2016 - March 2019
NOBAYASHI Atsushi	<a href="#">Human and Natural History on System of Food Production</a>	②Food issues and eco-systems	April 2017 - March 2020

Theme Category: Culture

Project Leader	Project Title	Category	Project Period
NISHIO Tetsuo	<a href="#">Global Area Studies: Towards a New Epistemology for Mapping the Globalising World</a>	③Cultural conflicts and plural values	April 2020 - March 2023
IIDA Taku	<a href="#">Humanity and Communities in Cultural Heritage in the Age of Digital Technology</a>	④Cultural heritages and communities	April 2019 - March 2022

Theme Category: Humans

Project Leader	Project Title	Category	Project Period
TERADA Yoshitaka FUKUOKA Shota	<a href="#">Performing Arts and Conviviality</a>	⑤Minorities and coexistence	April 2018 - March 2021
MORI Akiko	<a href="#">Family, States and Societies: Policy Trajectories (tentative)</a>	⑥Population issues and family / society	April 2021 - March 2024



Project in FY2016

Project Leader	Project Title
IKEYA Kazunobu KISHIGAMI Nobuhiro	<a href="#">Historical Ecology of Biocultural Diversity: Use and Conservation of Endangered Animals, Plants, and Habitats</a>

Projects in FY2017

Project Leader	Project Title
IKEYA Kazunobu KISHIGAMI Nobuhiro	<a href="#">Historical Ecology of Biocultural Diversity: Use and Conservation of Endangered Animals, Plants, and Habitats</a>
NOBAYASHI Atsushi	<a href="#">Human and Natural History on System of Food Production</a>

Projects in FY2018

Project Leader	Project Title
IKEYA Kazunobu KISHIGAMI Nobuhiro	<a href="#">Historical Ecology of Biocultural Diversity: Use and Conservation of Endangered Animals, Plants, and Habitats</a>
NOBAYASHI Atsushi	<a href="#">Human and Natural History on System of Food Production</a>
TERADA Yoshitaka	<a href="#">Performing Arts and Conviviality</a>

Projects in FY2019

Project Leader	Project Title
NOBAYASHI Atsushi	<a href="#">Human and Natural History on System of Food Production</a>
TERADA Yoshitaka	<a href="#">Performing Arts and Conviviality</a>
IIDA Taku	<a href="#">Humanity and Communities in Cultural Heritage in the Age of Digital Technology</a>

International Symposium  
Public Lecture  
[“Pilgrimage to Anime Locations: Actuality of Subculture Heritage”](#)  
Date November 15, 2019  
Project Leader IIDA Taku  
The total number of participants 340

International Symposium  
[“Performing Arts and Conviviality”](#)  
scheduled for March, 2020 has been postponed.



Info-Forum Museum for Cultural Resources of the World  
(Instituted Project of the National Institutes for the Humanities Transdisciplinary Projects)

The Museum has been devoted to research on peoples, cultures and societies, and has been collecting diverse tangible and intangible ethno-cultural materials and information worldwide. The staff of the Museum has been working collaboratively with other research institutes, universities, museums, and local societies, both in Japan and around the world, to conduct international collaborative research based on artifacts and related information. The Museum considers it vital to share such materials and information in this era, as “cultural resources of the world,” and hopes to pass them on to future generations. Therefore, “Info-Forum Museum” has been created as a digital databank for global use. It distributes, exchanges, creates, and shares information related to cultural resources of the world. Through this Info-Forum Museum, the staff of the Museum wishes to facilitate mutual communication with both researchers and source communities that originally created the cultural resources. During 2019, the sixth year of this program, four new projects for database establishment, and six new projects for database improvement were added, bringing the total number of projects to ten. In our international exchange program, established to promote the internationalization of research, we published a Collections Review on 186 Items Labeled “Hopi” in the National Museum of Ethnology: Reconnecting Source Communities with Museum Collections 3 and a Collections Review on 446 Silverworks and Related Items Labeled “Hopi” in the Museum of Northern Arizona: Reconnecting Source Communities with Museum Collections 4 as a resultant publication. This is one of the instituted project of the NIHU Transdisciplinary Projects.

Project under promotion:

1.Project for Database Establishment

The aim of the project is to share information related to cultural resources under the supervision of a project leader and in cooperation with partner organizations at home and abroad, and to thereby to further international joint research to produce contents for the database. Utilization of images and audio data are being promoted, except for common items, for the construction of the database.

2.Project for Database Improvement

The aim of the project is to organize Minpaku’s existing data related to cultural resources and to add new data, thereby improving the database through refinement.

Projects of Info-Forum Museum for Cultural Resources of the World

Project Leader	Project Title*	Category	Period
SAITO Reiko	Re-examination and Documentation of the Ainu Collection at Minpaku	project for database establishment	April 2016 - March 2020
IIDA Taku	Building a Multilingual and Interactive Database for the Africa Collection	project for database establishment	April 2017 - March 2021
TERAMURA Hirofumi	Material Culture in Central and North Asia: Ethno-Cultural Objects at the National Museum of Ethnology	project for database establishment	April 2018 - March 2022
ONO Rintaro	Maritime Adaptation and Material Culture in Maritime Asia- Based on the Museum Materials from Southeast Asia	project for database establishment	April 2019 - March 2022
OTA Shimpei	A Japan-US Joint Study to Enrich and Connect Korean Collections Databases	project for database improvement	April 2017 - March 2020
YAGI Yuriko	Building an Info-Forum Database for Cultural Collections of Central and South America	project for database improvement	April 2018 - March 2020
NIWA Norio	Building an Info-Forum Database for the Asaeda Toshio Collection Focusing on his Oceania Ethnography	project for database improvement	April 2018 - March 2020
MINAMI Makito	Building an Info-Forum Database for Audiovisual Records of the Gandharba Community, Nepal	project for database improvement	April 2018 - March 2020
HIDAKA Shingo	Information Disclosure Project for Jidai Gangu collection	project for database improvement	April 2019-March 2021
HAYASHI Isao	An Info-forum Database for Minpaku Micronesia Collections; Focusing on Materials Collected in the Early 20th Century	project for database improvement	April 2019-March 2021

\*Implemented in FY2019



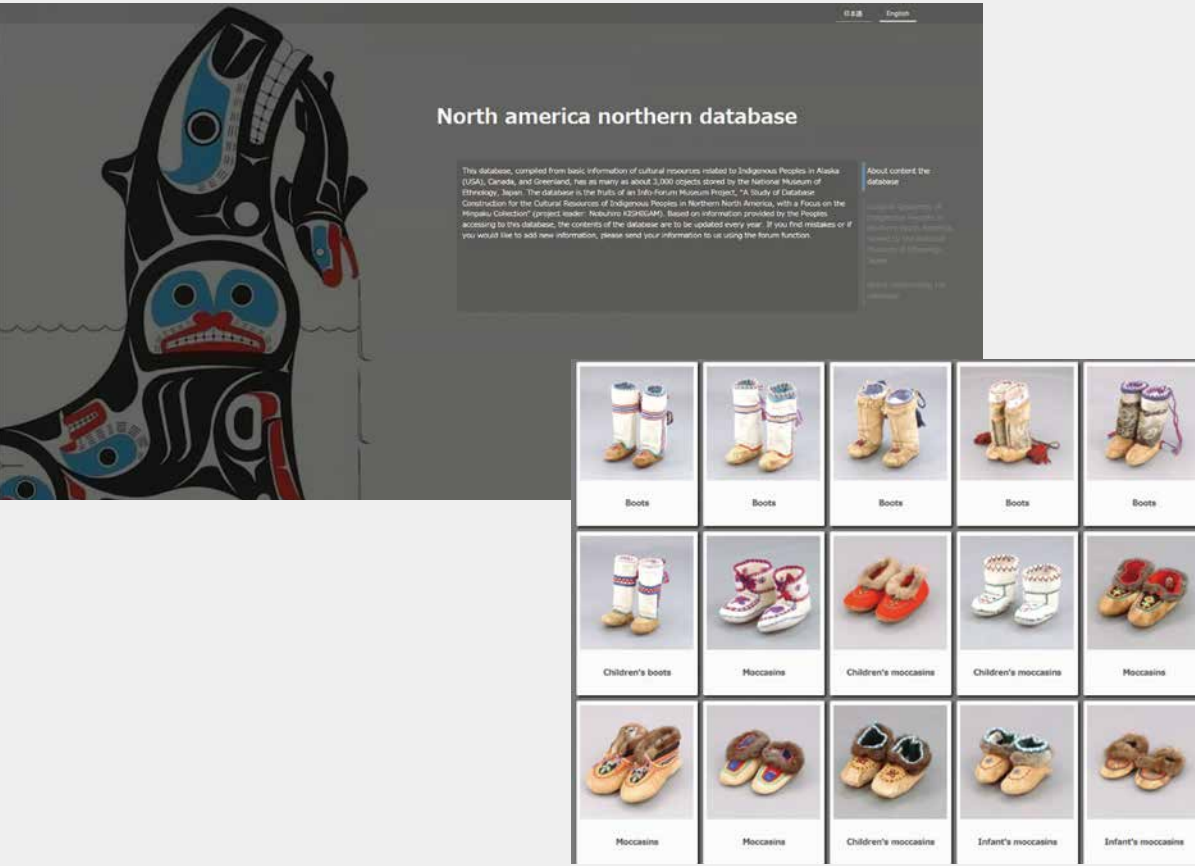
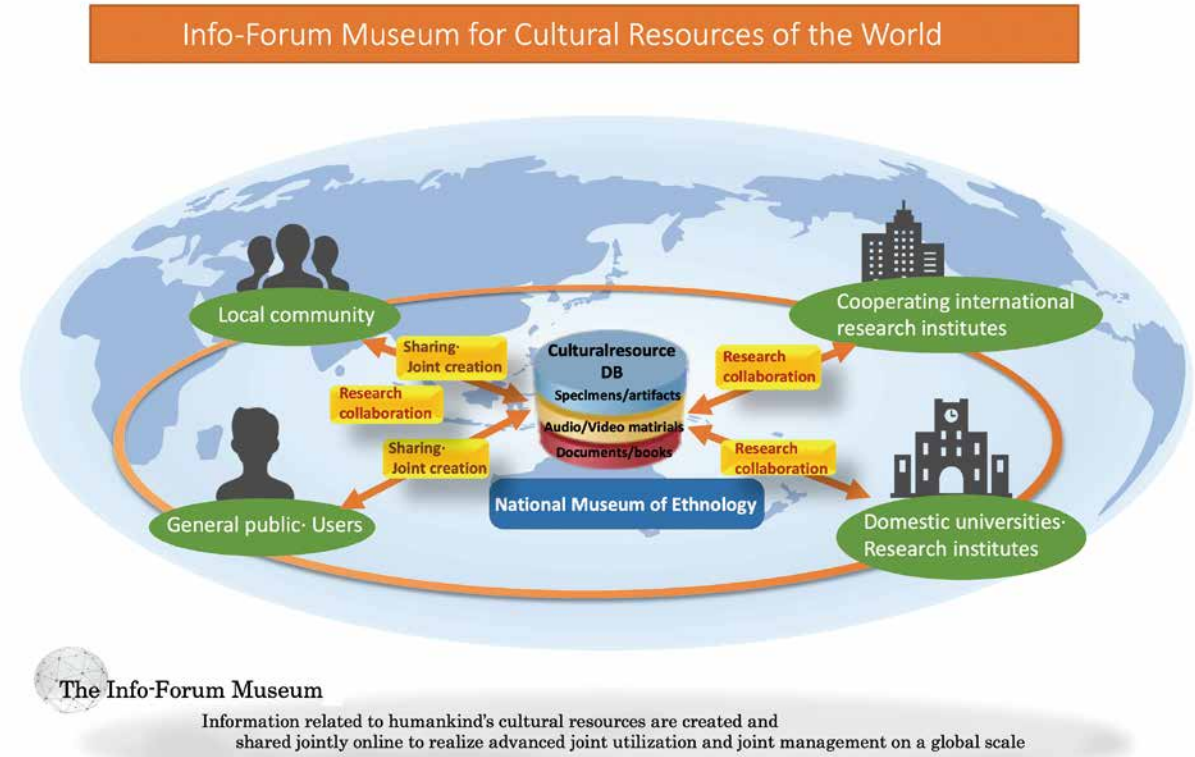
Printed publication of outcomes by the international transmission program



Culture inheritance activities in the source community using the database: Utilization of database for [Song and dancing of Tokunoshima] at Nishiakina Primary School in Tokunoshima



Examination of museum resources and research workshops held in cooperation with researchers invited from overseas



Database opened to public use. Accessible from the [Info-Forum Museum] website.



Inter-University Research Projects

These projects are conducted jointly by scholars of the Museum and outside organizations. This year, projects are being jointly undertaken by the Museum scholars and 109 scholars from national universities, 14 scholars from prefectural and municipal universities, 98 scholars from private universities, and 48 experts from other organizations.

FY2019 Research Theme

○ Projects undertaken outside Minpaku

General Research

Coordinator	Research Theme	Research Period
Project 1: Extensive research that encompasses cultural anthropology, ethnology and other related academic fields		
MATSUO Mizuho	A Comparative Study on Social Constellation of Bodily Substances in a Globalized World	2015.10 – 2020.3
KISHIGAMI Nobuhiro	Whaling and Environmental Ethics	2016.10 – 2020.3
○ NOZAWA Toyochi	In Search of Interacting Musicking Body: An Interdisciplinary Approach	2016.10 – 2020.3
○ UKIGAYA Sachiyo	Anthropological Study of Reconstructing End-of-Life Care Culture in Contemporary Japan	2016.10 – 2020.3
○ NAKAO Katsumi	Relation of Nation-States with Knowledge of Anthropology and Folklore: Nationalism and Intelligence in the Former Half of Twentieth Century	2017.10 – 2021.3
○ NAKAGAWA Satoshi	Naturalising Cultural Anthropology	2017.10 – 2021.3
○ TANUMA Sachiko	Morality within Neoliberalism	2017.10 – 2021.3
○ KAZAMA Kazuhiro	The Anthropological Study of Historical Memory and Emotions on the Intercourse with Other Peoples in Oceania and Island Southeast Asia	2018.10 – 2022.3
○ NAKATANI Ayami	Production and Consumption of Traditional Textiles: The Transformation of Local Perceptions through the Politics of Cultural Heritage and Tourism	2018.10 – 2022.3
○ NISHI Makoto	Anthropological Inquiries into Uncertainty, Apprehension, and Responsibility	2018.10 – 2022.3
○ SAGAWA Toru	The Dynamics of Frontier Spaces in Contemporary Sub-Saharan Africa, South-East Asia and Latin America	2018.10 – 2022.3
○ YAMA Yoshiyuki	Narrative Politics of “Tolerance Intolerance” in the Global Era	2018.10 – 2022.3
○ NAITO Naoki	Ethnography of Capital and Power towards an Ecology of Publicness	2018.10 – 2022.3
○ AZUMA Kentaro	A Study on the Dynamism of Tourization and De-tourization in the Age of Globalization	2019.10 – 2022.3
NOBAYASHI Atsushi	Dietary and Staple Food in the Sustainable Society	2019.10 – 2022.3
KAWAI Hironao	Reevaluation of Anthropological Theories in the Realm of Chinese Studies: 12 Topics	2019.10 – 2022.3
SUZUKI Hideaki	Re-construction of the Notions of Movement in Human History: With Focus on Friction between “Free” and “Unfree”	2019.10 – 2022.3
ONO Rintaro	Anthropological Study of Human Burial Practice and Culture in Asia and Pacific Islands	2019.10 – 2022.3
Project 2: Research on items or materials held in the Minpaku collection		
NAWATA Hiroshi	Comparative Studies of Afro-Eurasian Material Culture from the Perspective of Moving Strategies in Desert Societies	2016.10 – 2020.3
SONODA Naoko	Conservation Science Research on the Establishment of Sustainable Collection Management and Museum Environment	2017.10 – 2021.3
○ ONISHI Hideyuki	Rethinking Ethnographic Records of Seiichi Izumi with Emphasis on Saru River Research	2019.10 – 2022.3

Young Researchers

Coordinator	Research Theme	Research Period
Project 1: Extensive research that encompasses cultural anthropology, ethnology and other related academic fields		
○ HIRATA Akiko	Interdisciplinary Study of Physical Techniques Using Technology	2016.10 – 2020.3
YAGI Yuriko	A Study of Religion in Contemporary World through the Things	2017.10 – 2020.3
○ FUJITA Mizuho	Experimental Film Project for Extended Interdisciplinary Fields	2018.10 – 2021.3
○ OGATA Shirabe	Interactions between Sensuosity and Institutions: Examining Evocation and Valuation in Art Practices	2019.10 – 2022.3
FURUKAWA Fukachi	Anthropological Studies of Mobilities and Materialities	2019.10 – 2022.3

Public Presentation of Joint Research Results

Since FY2004, some of the Joint Research Project meetings have been made open to the general public. In FY2019 the following projects were hosted.

Date	Title	Venue
July 27, 2019	Interdisciplinary Study of Physical Techniques Using Technology	The National Museum of Ethnology
October 6, 2019	A Study of Religion in Contemporary World through the Things	The National Museum of Ethnology
November 17, 2019	Comparative Studies of Afro-Eurasian Material Culture from the Perspective of Moving Strategies in Desert Societies	Yokohama Media and Communications Center
February 16, 2020	Whaling and Environmental Ethics	The National Museum of Ethnology
February 16, 2020	Interdisciplinary Study of Physical Techniques Using Technology	The National Museum of Ethnology

Visiting Researchers FY2019

As an Inter-University Research Institute, the Museum accepts researchers, young doctoral graduates, and doctoral students from domestic and overseas academic and research institutions who wish to conduct research activities at the Museum as Visiting Researchers for a certain period of time. Instructors at the Museum are assigned to host such researchers and graduates. Visiting Researchers who meet certain conditions are permitted to apply for Grants-in-Aid for Scientific Research as project coordinators at the Museum. In FY2019, we accepted a total of 96 researchers, including 29 who were non-Japanese from 16 countries and regions.

Visiting Graduate Student Program FY2019

The Museum, as an Inter-University Research Institute, accepts students who are enrolled in doctoral courses at Japanese national, public, and private universities. Upon request from their universities, these students may be accepted as Visiting Graduate Student in order to provide them with research guidance on specific themes for a fixed period of time. Visiting Graduate Students can pursue their research under the guidance of Museum scholars, use the facilities, and attend classes at the School of Cultural and Social Studies of SOKENDAI (The Graduate University for Advanced Studies) (Regional Studies and Comparative Studies) established at the Museum. In FY2019, we accepted three students from national universities, and one from private university.



JSPS Grants-in-Aid for Scientific Research

Grants-in-Aid for Scientific Research provided by the Japan Society for the Promotion of Science are intended to foster the progress of unique and pioneering research projects in all fields ranging from the human and social sciences to the natural sciences, in order to promote academic activities in our country. The aid is awarded to research projects which are especially important in terms of current academic trends, organized on the initiative of individual researchers or research groups in academic institutions.

FY2020 Projects Funded

Category	Head	Research Subject	(thousands of yen)
Grant-in-Aid for Scientific Research on Innovative Areas			
Continued	NOBAYASHI Atsushi	Anthropological Study on Cultural and Behavioral Change through Dispersal and Contact of Human Populations	24,050
			Total 24,050
Grant-in-Aid for Scientific Research on Innovative Areas – Platforms for Advanced Technologies and Research Resources			
Continued	YOSHIDA Kenji	Platform for Integration and Sophistication of Image Information on Area Studies	26,000
			Total 26,000
*Fund for the Promotion of Joint International Research (Fostering Joint International Research)			
Continued	TAKEMURA Yoshiaki	The Body Politics of Migration: Globalization of Indian Dance and Agencies	15,340
			Total 15,340
Fund for the Promotion of Joint International Research (Fostering Joint International Research(B))			
Continued	KIKUSAWA Ritsuko	Integrating Language Change in Time and Space: Applying Geographical Information System (GIS) and Statistic Modelling to Historical Linguistics	3,510
Continued	ONO Rintaro	Archaeological Study of Human Migrations and Inter-islands Networks in Oceania	4,420
New	YOSHIDA Kenji	Innovation in the Study of the Arts in Anthropology: Creating a Platform for International Research in the Anthropology of Images	2,080
New	NAGANO Yasuhiko	The “Objects” and Their Sacred Power in the Religions of Tibet -- an International Collaborative Survey	2,730
			Total 12,740
**Fund for the Promotion of Joint International Research (Fostering Joint International Research(A))			
New	MATSUO Mizuho	Categorization and Differentiation of Social Groups in the Age of Geneticization: the Cultural Notions of Blood and Gene in India	13,130
			Total 13,130
Grant-in-Aid for Scientific Research (A)			
Continued	KONAGAYA Yuki	Reframing Images of Mongolia: Photographic Records from the 19th Century to Early 20th Century	7,670
Continued	YAMANAKA Yuriko	The Natural and the Supernatural in Comparative Perspective	7,150
Continued	HAYASHI Isao	Materializing and Narrating Collective Memories of Calamities and Education for Disaster Reduction	6,630
Continued	KISHIGAMI Nobuhiro	A Comparative Study of Emergence, Current Status and Future of Indigenous Cultures in Alaska and Northwest Coast Regions of North America	8,840
Continued	SHIMAMURA Ippei	The Interdisciplinary Research on the Glocal Practices of Mongolian Buddhism	4,290
New	SEKI Yuji	Reinventing the Study of Andean Civilization through Analysis of Social Memory	12,220
			Total 46,800
Grant-in-Aid for Scientific Research (B)			
Continued	NISHIO Tetsuo	The Process of Resourcing Popular Culture and the Re-globalization of the Public Communication Sphere in the Contemporary Middle East	3,770
Continued	NISHIO Tetsuo	Narrative Informatic Studies of the Story of Sindbad the Sailor: the Emergence and Formation of Literary Function to Co-create a Pluralistic and Multi-valued Society	3,120
Continued	MATTHHEWS, Peter J.	Mapping Genetic Diversity in Taro (C. Esculenta) to Test Domestication Models	1,950
Continued	HIDAKA Shingo	Utilization and Conservation of Regional Heritage as Resources for Education or Tourism	1,690
Continued	SONODA Naoko	Development of Mass-strengthening Treatment of Weakened Acidic Paper Documents by Cellulose Nanofiber Coating	3,380
Continued	IIDA Taku	Social Behavior of Cultural Heritage: An Applied-anthropological Study of Heritage in Eastern Africa	5,070
Continued	UEBA Yoko	An Anthropological Study on Basketry from the Perspective of Plant Ecology and Craft Skills	2,990
Continued	SUEMORI Kaori	Multiple Verification on Visual Characteristics of Patterned Thousand Buddha Image Depicted in Mogao Grottoes, Dunhuang, China: through Originally Reproduction and Virtual Grotto Space	4,160
Continued	TERAMURA Hirofumi	Archaeological Research on the Formation of Silk Road Cities and East-west Exchange of People and Cultures	3,510
Continued	NIWA Norio	Resilience of Post-conflict Societies: Analysis of Social Capital and Migrant Networks of Minorities in Oceania	2,730
New	UDA Shuhei	Elucidation of Cormorant Fishing as Cultural System and Co-creation of Optimal Inheritance Route in the Era of Animal Welfare.	1,690
New	IKEYA Kazunobu	Re-evaluating African History through the Study of Ornament Culture	3,770
			Total 37,830
Grant-in-Aid for Scientific Research (C)			
Continued	FUJIMOTO Toko	Anthropological Study on Traditional Medicine and Islam in Kazakhstan	1,040
Continued	HIROSE Kojiro	Creating a Theory of Tactile Learning:How the Visually-impaired Can Form the Image of Outdoor Space	1,300
Continued	NAKAMICHI Shizuka	The Thousand and One Nights from Manuscript to Print: Textual and Historical Studies	650
Continued	KAWASE Itsushi	The Applied Anthropological Study on the Ethnographic Filmmaking on Intangible Cultures in Africa	910
Continued	FUKUOKA Shota	Approaching Transmission of Performing Arts in Island Societies through Documentation Video as a Site for Interaction and Discovery	1,560
Continued	HIRAI Kyonosuke	An Anthropological Study of the Genesis of ‘Negative Heritage’ in the Post-Conflict Era of Minamata City	1,560
Continued	SUZUKI Nanami	Development of Lifelong Learning Sharing Life Stories of Older Adults with Dementia by Intergenerational Collaboration in the US	1,040
Continued	NOJIMA Yoko	Transmission and Transformation of Intangible Cultural Heritage in Relation to Natural Hazards: A Case Study in Northern Vanuatu	1,690
Continued	OKAMOTO Naoko	Research about the Writing Process of J.-C. Mardrus by Analysis of One of His Unpublished Manuscripts	780
Continued	KAWAI Hironao	Change in the Relationship between China and Countries in South Pacific Islands and the Expression of the “Oceanian Chinese” Identity	780
Continued	SAGARA Keiko	Historical Semantic Change in Japanese Sign Language, Taiwan Sign Language and Korean Sign Language	1,690
Continued	TOKITA Yumiko	Transformation of Intimate Spheres in India: Emotions and Experiences of Love, Marriage and Family	1,300
Continued	NAKAMURA Marie	The Process of Transformation of Archaeological Artifacts into Valuable Antiquities: A Cultural Anthropological Study of the Ban Chiang World Heritage Site	1,040
Continued	MIO Minoru	Anthropological Study on Religious Practice and Formation of Locality in a Western Indian Town	1,300
New	SUZUKI Hideaki	Historical Ethnography on Slavery in the Early 20th Century Persian Gulf	1,300
New	OTA Shimpei	Ethnographic and Statistic Approaches to Work Ethic and Motivation of Museum Employees	1,170
New	SUGIMOTO Atsushi	Ethnography of the Domestic Mode of Production under Common Agricultural Policy	1,170
New	MORI Akiko	An Ethnographic Study of Neighborhood Seen from the Practice of Care in Berlin	1,040
New	GAO Qian	The Generation Process of Ethnic Art: Cultural Resource and Tourism of Tompa Culture in Lijiang, Yunnan Province, China	1,560
New	OKADA Emi	Traditional Polyphony and Singing Culture in Northeast India	1,040
			Total 23,920

Category	Head	Research Subject	(thousands of yen)
Grant-in-Aid for Young Scientists (A)			
Continued	SUZUKI Hiroyuki	Investigation of Undescribed Langauges in the Eastern Tibetosphere and Their Geolinguistic Research	1,170
			Total 1,170
Grant-in-Aid for Young Scientists (B)			
Continued	NOBORI Kukiko	Art Makes Society: An Anthropological Study of “Socially Engaged Art”	800
Continued	AISHIMA Hatsuki	A Social Anthropological Study of Globalization and Karate-ka's Practice of Nation in Contemporary Egypt	650
			Total 1,450
Grant-in-Aid for Young Scientists			
Continued	KURODA Kenji	An Anthropological Approach to the Military Interventions and Transformation of the Martyrdom Discourse in Iran under the Islamic Republic	1,430
Continued	HO Uketsu	Anthropological Study of Resource-getting Behaviors among Hunter-gatherers in Forest of Tropical Africa	1,040
Continued	KAMINO Chie	Modern Changes of House Purifying Performing Arts in Japan and Korea: Mainly Focused on Japanese Ise-daikagura and Korean Nong-ak	910
Continued	HAYAKAWA Mayu	An Anthropological Study of the Counting and Accounting System among the Zimbabwean Peddlers in the Kingdom of Lesotho	1,170
Continued	NARA Masashi	An Anthropological Study of Religions and Mobilities: Transnational Muslim Networks in Contemporary China	1,300
New	ISHIHARA Yamato	The Historical Study of the Private Religionists and New Religions during the Transition to the Modern	
New	YAGI Yuriko	A Study on Devotion and Religiosity of Andean People: Focus on Votive Offering and Church Documents	1,300
New	KUDO Yumi	Anthropological Study on Ethno-medical Practices among Mapuche Organizations in Chile	1,300
New	ITO Satoru	Poetic Orality and Everyday Aesthetics: Comparative Study of Oral and Literal Culture in Tai Cultural Area	910
New	MATSUOKA Sachi	Community-based Medical Systems: Certificated Traditional Medicine and Traditional Medical Practitioners in Southern India	1,430
New	TYAYA Tomoyuki	School-dropout in Secondary Education and Social Participation: Roles of the Intermediators in India's Urban Slums	1,040
			Total 13,000
Grant-in-Aid for Challenging Research (Pioneering)			
Continued	DEGUCHI Masayuki	Interdisciplinary Research on Standardization of Individual Cultures between Anthropology and Accounting	4,290
New	ONO Rintaro	Austronesian Migration into Southeast Asia: Interdisciplinary Study of Their Pottery and Burial Tradition	6,300
			Total 10,590
Grant-in-Aid for Challenging Research (Exploratory)			
Continued	KANDA Kazuyuki	Verification of Constituents in New Sign Linguistics	260
Continued	KAWAGUCHI Kiyoshi	Studies on the Alteration of Nippon Shuwa Gengo	780
			Total 1,040
Grant-in-Aid for Research Activity start-up			
Continued	TAKAGI Hitoshi	The Research for Human Space Animals Considering from Green Sea Turtles	1,300
Continued	CHE Sohee	Social Change and the Transformation of Postpartum Folk Illness: Comparative Study between Korea and Taiwan	1,040
			Total 2,340
Grant-in-Aid for Publication of Scientific Research Results			
New	SUGIMOTO Yoshio	Heritage of Buddhist Modernism: Anagarika Dharmapala and Nationalism	1,400
Continues	KUBO Masatoshi	Gran-in-Aid for Publication of Scientific Research Results (Databases)	3,800
New	TAKAHASHI Haruko	Clothing Culture Digital Archives	5,700
			Total 11,900
Grant-in-Aid for JSPS Fellows			
Continued	MATSUOKA Sachi	Roles of Residential Religious Insutitutions for Elderly People: a Case Study in Southern India	1,300
Continued	NUKADA Yumi	Ethnographic Research on Indigeneity in Latin America: A Case Study of Costa Rica	1,300
Continued	INAI Hiroyuki	A Study of Community-based Aquatic Resource Management that Takes into Account ‘Outsiders’ in African Inland Waters	1,560
Continued	SAKITA Seishiro	Integrative Study on the Activities and Management of Small-scale Fisheries in East Mediterranean Region	1,690
New	NAKAMURA Yuka	Marketization of Modern Medicine in Nepal: Accessibility to Medical Services, Medicine, Body Experiences	1,430
New	SAKAGUCHI Nao	Analysis of Collective Memory Formation Process Based on Residents’ Narratives of Disaster Remains	1,430
New	KUSUNOKI Kazuki	Control of the Transboundary Animal Diseases (TADs) and the Transformation of State Governance in Post-war Kenya	1,430
New	KUDO Sakura	A Study of Religious Anthropology on the Practices of and Changes in the Rituals of Low-Caste Newar Women	1,430
			Total 11,570
* Found for the Promotion of Joint International Research (Fostering Joint International Research) was allocated between FY2018 to FY2020			
** Found for the Promotion of Joint International Research (Fostering Joint International Research (A) ) was allowed between FY2019 to FY2021			

Digital Picture Library for Area Studies (DiPLAS)

Image data such as photographs and motion pictures taken during a survey by Japanese researchers around the world constitute academic heritage resources reflecting Japanese scholarly history and research resources in which actual status at particular times is recorded.

This project supports digitization and database compilation of image data accumulated to date for scientific research and funding subsidized projects currently happening in various districts throughout the world. It supports foundations in the future accumulation and sharing of research information.

For adopted projects, photographic, and image data are streamlined, digitized, and compiled into a database. The entry of text information related to image contents is supported to create a platform for digital data to be used for the study. For images that might be made public, international sharing is attempted. Moreover, a foundation for open science is constructed to transcend the confines of the respective fields.





Contract Research Projects / Contract Business Projects FY2019

Head	Contractor	Research Theme	(thousands of yen)
SEKI Yuji	Agency for Cultural Affairs	Implementation of Commemorative Project for “Japan-Peru Exchange Year 2019” <i>commissioned by the Agency for Cultural Affairs, Japan</i>	12,952
IIZUMI Naoko	Public Interest Incorporated Association Osaka Association of the Deaf	<i>A Project to Improve the Interpreting Skills of Young Sign Language Interpreters</i>	1,100
Reseach Cooperation Section	Japan International Cooperation Agency	<i>Museums and Community Development</i>	6,972
Total			21,024

Research Donations FY2019

Name of the Donation (Reseach Grants for Art-Related Studies)	Head	Donor	(thousands of yen)
<i>The Kajima Foundation for The Arts (Reseach Grants for Art-Related Studies)</i>	SUEMORI Kaoru	SUEMORI Kaoru	630
<i>The Foundation for Ainu Culture (Reserch Grants for Ainu-Related Studies)</i>	SAITO Reiko	SAITO Reiko	1,500
<i>Shibusawa Foundation for Ethnological Studies (Travel Expense Subsidy for Participation in International Research Meetings)</i>	PYEON, Seollan	PYEON, Seollan	180
<i>Donation of Shung-Ye Museum of Formosan Aborigines</i>	NOBAYASHI Atsushi	Shung-Ye Museum of Formosan Aborigines	2,800
<i>The Japanese Society of Cultural Anthropology (Uematsu East Asian Reseach Fund Promotioin Project)</i>	NARA Masashi	Japanese Society of Cultural Anthropology	1,200
<i>Australian Research Council Discovery-collaboration Projects</i>	SUZUKI Hideaki	SUZUKI Hideaki	301
<i>The National Museum of Ethnology (Minpaku) Activity Grant</i>	National Museum of Ethnology	Hankyu Hanshin Department Stores,Inc.	650
<i>The Ajinomoto Foundation For Dietary Culture Research Grants for Dietary Culture</i>	TAKAGI Hitoshi	The Ajinomoto Foundation For Dietary Culture	980
Total			8,241

Sign Language Linguistics Research Section (SiLLR) FY2019

The section was established to promote sign language linguistics research and outreach activities for the dissemination of research outcomes to universities and society, as well as to build a foundation to promote collaborative research among hearing-impaired researchers through the training sign-language interpreters. Presently, 12 staff members, one of whom holds two posts, 3 full-time, 5 administrative assistants, 2 Japanese visiting researchers and 1 visiting researcher (of whom, 3 are deaf persons), engage in sign language linguistics research, interpreter training, social publicity, outreach activities, and planning for language-related exhibitions (including sign language).

Name of grant	Grantor	Period	(thousands of yen)
<i>Research in Sign Language Linguistics as Promoted by the Sign Language Linguistics Research Section (SiLLR)</i>	The Nippon Foundation	2019.4 - 2020.7	37,150

Projects Concerning Cultural Resources and Information

Cultural Resource Projects / Information Projects

“Cultural Resource Projects / Information Projects” are based on proposals, and led by our full-time research staff. The aim is to organize and digitize cultural resources held by the Museum and related organizations such as universities, in order to promote their shared use and academic value. The “Cultural Resource Projects” are undertaken in the four areas of survey and collection, artifact management, exhibition, and museum-community alliance. The “Information Projects” are undertaken in the two areas of information gathering, and digitization.

FY2020 List of Cultural Resource Projects

Area	Proposed by	Project Name
Exhibition Development Project	NOBUTA Toshihiro	<i>Special Exhibition “Treasure of Indigenous Peoples ”</i>
Exhibition Development Project	HIROSE Koujirou	<i>Special Exhibition “UNIVERSAL MUSEUM”: Exploring the New Field of Tactile Sensation</i>
Exhibition Development Project	HIDAKA Shingo	<i>Special Exhibition “Peoples Come Out of Disasters: Nexus among Peoples over Local Cultures”</i>
Exhibition Development Project	IIDA Taku	<i>Thematic Exhibition “UMESAO Tadao’s 100th Anniversary: The Front-runner of Intellectual Production”</i>
Exhibition Development Project	HIROSE Koujirou	<i>Experiencing Unexplored Senses: Things by Seeing, Things by Touching: Rethinking “Universal Museum”</i>
	YAMANAKA Yuriko	<i>Touring Exhibition “REGNUM IMAGINARIUM : Realm of the Marvelous and Uncanny”</i>
Exhibition Development Project	IKEYA Kazunobu	<i>Shifting Cultivation from the Perspective of Komei Sasaki: from Itsuki-mura to the World</i>
Exhibition Development Project	IIDA Taku	<i>Thematic Exhibition “UMESAO Tadao’s 100th Anniversary: The Front-runner of Intellectual Production”</i>
Exhibition Development Project	NIWA Norio	<i>Solomon Islands in 1930s: through the Eyes of a Japanese Photographer Toshio Asaeda</i>
Exhibition Development Project	KIKUSAWA Ritsuko	<i>The Hosting of Special Exhibition “<i>homō loquēns</i> ‘talking human’: Wonders of Language and Languages”</i>
Exhibition Development Project	UEBA Yoko	<i>Preparation for a Thematic Exhibition of Fiscal Year 2021 “Cloth and Culture in South Asia” (Tentative title)</i>
Museum Community Alliance Project	NOBUTA Toshihiro	<i>Practical Study on Using the Museum for People with Intellectual Disabilities</i>
<i>Museum Community Alliance Project</i>	YOSHIOKA Noboru	<i>The Project for Building up Partnership between the Museum and Society</i>

FY2020 List of Information Projects

Area	Proposed by	Project Name
Research and Collection Project	YAMANAKA Yuriko	<i>Collection of Audio-visual Materials on Ise-daikagura</i>
Research and Collection Project	FUKUOKA Shota	<i>The Production of a Multi-media Program “Puppet Theater in Southeast Asia”</i>
Research and Collection Project	SASAHARA Ryoji	<i>The Production of a Multi-media Program “Songs, Dances and Festivals of Tokunoshima”</i>

Cultural Resource Planning Projects / Information Planning Projects

“Cultural Resource Planning Projects / Information Planning Projects” are implemented continuously, or in a planned manner, to strengthen the Museum’s jointly used infrastructure. The “Cultural Resource Planning Projects” are undertaken in the three areas of artifact-related, exhibition, and museum-community alliance. The “Information Planning Projects” are undertaken in the two areas of video record production and digitization of exhibitions.

FY2020 List of Cultural Resource Planning Projects

Area	Implementation Manager	Project Name
Artifact Project	HIDAKA Shingo	<i>Taking Pictures of Materials</i>
Artifact Project	The Head of the Information Planning Section	<i>Research Data Organization / Information Conversion and Usage Management</i>
Artifact Project	HIDAKA Shingo	<i>Research Data Organization / Information Conversion and Usage Management</i>
Artifact Project	SONODA Naoko	<i>Research on the Preservation and Management of Tangible Cultural Resources</i>
Artifact Project	HIDAKA Shingo	<i>New Production of Totem Poles</i>
Museum Community Alliance Project	SAITO Reiko	<i>Support for Volunteer Activities</i>
Museum Community Alliance Project	SAITO Reiko	<i>Workshop Hosting and Worksheet Exercises</i>
Museum Community Alliance Project	DEGUCHI Masayuki	<i>Music Day at Minpaku 2020</i>
Museum Community Alliance Project	SAITO Reiko	<i>Kamuynomi</i> Rite, Traditional Ainu Dances
Museum Community Alliance Project	SAITO Reiko	<i>Revision of the Min-pack “Expedition to the Steppes of Mongolia”</i>

FY2020 List of Information Planning Projects

Area	Implementing Entity	Project Name
Project for Advancing Information on Exhibitions	TERAMURA Hirofumi	<i>Production of Videotheque Programs related to “The life ways in Oasis cities”.</i>
Project for Advancing Information on Exhibitions	YAMANAKA Yuriko	<i>Ise-daikagura is Coming!/: Traveling Lion Dance Performance at Minpaku</i>
Project for Video Production	Committee for Information Management	<i>Making Panoramic Virtual Tours of Special Exhibitions, Thematic Exhibitions and Collection Exhibitions.</i>
Project for Video Production	Committee for Information Management	<i>Making Videos of Special Lectures and Performances</i>



Individual Research Projects

FY2020 Research Theme

Director-General

YOSHIDA Kenji Study of Creation, Transmission, and Representation of Culture: A Museum-anthropological Approach

Department of Advanced Human Sciences

IZUMI Naoko Implementing Curricula for Training Academic Sign Language Interpreters and Their Evaluation

OKADA Emi Traditional Polyphony and Singing Culture of Naga Tribes in Northeast India

KAWASE Itsushi Exploring Anthropological Films that Mediate and Promote Communication

KIKUSAWA Ritsuko Application of the Geographic Information System (GIS) to the Historical Analyses of Fijian Languages

SAGARA Keiko Historical Semantic Change in Japanese Sign Language, Taiwan Sign Language and Korean Sign language

SUEMORI Kaoru Development of Optical Survey Methods for Museum

SONODA Naoko Integrated Collection Management of Ethnological Collection

DEGUCHI Masayuki Transformative Researches on the Third Sector

Fieldwork to Cyberspace in an Era of the New Coronavirus

HIDAKA Shingo Rediscovery of Regional Culture and Construction of the Representational System

FUKUOKA Shota A Study on Influences of Audiovisual Media on Traditional Performing Arts

MARUKAWA Yuzo Research of Information Service for Cultural Assets based on Informatics of Association

YOSHIOKA Noboru Descriptive Linguistics for Northern Pakistan Languages

Department of Cross-Field Research

UDAGAWA Taeko Reconsideration and Reconstruction of the Public and the Intimate

OTA Shimpei Integration and Variation of Socio-cultures in Korea

KASHINAGA Masao Scripts and Texts of the Tai Dam in Vietnam

HAN Min Anthropological Research on Society, History and Symbols

SHIMAMURA Ippei The Interdisciplinary Research on the Glocal Practices of Mongolian Buddhism

SHINMEN Mitsuhiro The Thought and Strategy of Constantin Noica and his Influence

SUGASE Akiko Representation of Religious Identity among the East Mediterranean Arabs

NARA Masashi An Anthropological Study of Religions and Mobilities: A Case Study of Hui Muslims in Contemporary China

HAYASHI Isao Mediums in Recollecting Disaster Experience : Remains, Monuments, Narratives

MATTHEWS, Peter J. Mapping Genetic Diversity in Taro to Test Domestication Theories

Plant Genetic Resources and Related Traditional Knowledge in Semi-autonomous Ethnic Minority Areas with Political and Geographic Isolation

The Archaeology of Boundaries supported by Toshiba International Foundation (TIFO)

MATSUO Mizuho Social History of Mixed Race in South Asia

Department of Modern Society and Civilization

IIDA Taku Franco-Japanese Academic Relations in the Interwar Period with Special Focus on Anthropology, Ethnology, and Folklore Studies

IKEYA Kazunobu Historical Anthropology of the Relationships between Hunter-gatherers and Neighbors

UEBA Yoko A Comparative Study of Handicraft Culture

UDA Shuhei A Comparative Study of Cormorant Fishing Culture

ONO Rintaro Human Migration, Island Adaptation, and Maritime Culture in Maritime Asia and Oceania

SAITO Akira A Comprehensive Study of the Viceroy Toledo's General Resettlement in the Colonial Andes

SUZUKI Motoi Comparative Study of Museum Exhibition of Latin American Indigenous Cultures

SEKI Yuji Studies on the Formation of Power in the Ancient Andes

TERAMURA Hirofumi Research on the Formation of Ancient Silk Road Cities and East-West Exchange of People and Cultures

FUJIMOTO Toko Anthropological Study on Society, Religion, and Traditional Medicine in Kazakhstan

Department of Globalization and Humanity

AISHIMA Hatsuki Aesthetics and Body Culture in Contemporary Egypt

KAWAI Hironao Anthropological Studies on Landscape and Foodscape

Multi-sited Works on the Hakka and Hakka Cultures in the Pacific Rim

Reevaluation of Anthropological Theories in the Realm of Chinese Studies:

SUZUKI Nanami Aging-friendly Communities in Super Aged Societies: Exploring Diverse Interaction for Aging in Place

SUZUKI Hideaki Global History on Abolition of Slavery and Slave Trade with Focusing on the Indian Ocean

NISHIO Tetsuo Globalization and Popular Cultures in the Middle East

NOBUTA Toshihiro An Anthropological Study on Indigenous Peoples in Malaysia

An Anthropological Study on Inclusive Society

HIRAI Kyonosuke An Anthropological Study of the Genesis of 'Negative Heritage' in the Post-Conflict Era of Minamata City

HIROSE Koujiro An Anthropological Study of the Concept of "Barrier-Free"

MIO Minoru Anthropological Study on Transformation of Religion and Culture in Western India

MISHIMA Teiko A Theoretical Study on the Plural Significance of Ethnic Culture-From the Transformation of Merchant Migrants society

MORI Akiko An Anthropological Study on the Meaning of the Social and Its Universality across Cultures

Center for Cultural Resource Studies

ITO Atsunori Research on the Collaborative Management of Native American Collections in Japanese Museums

KISHIGAMI Nobuhiro An Ethnological Study of Cultural Changes among Northwest Coast Peoples in North America

SAITO Reiko The Movements and Interchanges of People and Things in the Ainu and Their Neighbors

SASAHARA Ryoji Relations between Variety of Festivals and Performing Arts and the History in Amami Islands

CHE Sohee Social Change and the Transformation of Postpartum Folk Illness

NIWA Norio The Anthropology of Support

NOBAYASHI Atsushi Anthropology of Technology to Get Ecological Resources

MINAMI Makito Locally Image of the Post- Coronavirus in Nepal Rural Villages Where Migrant Labor Has Been Normalized

YAGI Yuriko A Study on the Offering and Religiosity of Contemporary Andean People

YAMANAKA Yuriko Comparative Study of Marvels and the Uncanny: Human Imagination and the Natural World

Dissemination of Research Findings

Note: Those with no venue cited were held in the Museum.

The Museum promotes active dissemination of research findings, via symposia, research forums, and participation of staff in international academic meetings using the "Research Results Presentation Program" under the Director-General's Leadership Program. Using various external funds, the Museum has conducted numerous symposia and forums in FY2019(see below).

For information about Minpaku Special Research Projects symposia and forums, please see p. 8. and 9.

Public Academic Lectures

The Museum organizes public academic lectures in Osaka and Tokyo. These facilitate cross-cultural understanding and help to increase public recognition of the Museum.

Public Lecture

"Pilgrimage to Anime Locations: Actuality of Subculture Heritage"

Date November 15, 2019  
Venue Nikkei Hall (Tokyo)  
Lecturers IIDA Taku  
KAWAMURA Kiyoshi  
KAWAI Hironao  
Attendance 340  
Co-host NIKKEI INC.



Symposia

Symposium

"The Current State of Problem of "Universal Museum" in Japan: before Celebrating the Olympic and the Paralympic games in 2020"

Date November 3 - 4, 2019  
Coordinator HIROSE Koujiro  
Fund Research Results Presentation Program  
Participants 296



International Forum

"Utilization of Regional Cultures: Roles for Promoting and Activating Regions"

Date October 29 - November 2, 2019  
Coordinator HIDAKA Shingo  
Fund Research Results Presentation Program  
Participants 210



International Symposium

"The Power of Culture in the Age of Globalization: Management of "Local Knowledge"

Date November 2, 2019  
Coordinator NIWA Norio  
Fund Research Results Presentation Program  
Participants 45



World Museology Workshop

"Interruptions: Challenges and Innovations in Exhibition Making"

Date December 11 - 14, 2019  
Coordinator SUZUKI Motoi  
Fund Research Results Presentation Program  
Participants 71



Public Forum

"Museums in the World 2019"

Date October 26, 2019  
Coordinator SUGASE Akiko  
Fund JICA Knowledge Co-Creation Program  
Museums and Community Development  
Participants 67



International Symposium

"The 8th Meeting of Signed and Spoken Language Linguistics"

Date December 7, 2019  
Coordinator KIKUSAWA Ritsuko  
Fund The Nippon Foundation  
Participants 137





Publication of Research Results FY2019

Publications by the Museum

Bulletin of the National Museum of Ethnology

The Bulletin of the National Museum of Ethnology is a research journal that contribute to the advancement of ethnic studies and cultural anthropology. It publishes articles, book reviews, documentary materials, and research notes related to ethnic studies, anthropology, and related fields. Published four times a year.

Vol. 44, No. 1	<b>Articles</b> SONODA Naoko, <a href="#">Damage from the Earthquake in Northern Osaka and Countermeasures: Case Study of Storage at the National Museum of Ethnology</a> HIDAKA Shingo, <a href="#">Recovery Activities of National Museum of Ethnology Damaged by the Earthquake with Epicenter in the Northern Part of Osaka Prefecture</a> TAKEZAWA Shoichiro, <a href="#">From Agribusiness to Food Democracy: Future of Agriculture and Food in Japan and France</a> IWASE Yuko, <a href="#">On Technology between Participation and Competition: A Case Study of the Human Tower in Catalonia, Spain</a>
Vol. 44, No. 2	<b>Articles</b> YOSHIOKA Noboru, <a href="#">The Decay and Reconstruction of Nominal Classes in Srinagar Burushaski</a> HIBINO Aiko, <a href="#">Interactions between Manual and Automated Labor in Factory Production</a> <b>Special Theme:</b> Local Food in Postindustrial Japan NOBAYASHI Atsushi, <a href="#">Introduction</a> <b>Articles</b> HAMADA Shingo, <a href="#">Changing Authenticity of Heritage Food: A Case Study of Fermented Mackerel Sushi in Coastal Southern Fukui</a> WAKAMATSU Fumitaka, <a href="#">Historical Trends of Whale Meat Trade in Postwar Japan: From Substitutive Industrial Food to Traditional Post-Industrial Food</a> SCHOOLMAN, Ethan D. and Alexander HO, <a href="#">Growth and Tension in Local Food Systems in the United States and Japan</a> <b>Research Notes</b> OSAWA Yoshimi, <a href="#">Umami Perception and Establishment in Contemporary Japan</a> NOBAYASHI Atsushi, <a href="#">Preference of Sweetness and Food Culture in Taiwan Society: Historical Ecology of Production and Consumption of Sugar</a>
Vol. 44, No. 3	<b>Articles</b> SUGIMOTO Yoshio, <a href="#">Symposion of Universalists: Anagarika Dharmapala and Theosophy</a> YAMASAKI Ryo, <a href="#">Nomadic Storytellers: Scottish Traveller Self-Representation in Stanley Robertson's Exodus to Alford</a> <b>Research Note</b> SAGARA Keiko, <a href="#">Changes in Two-, Three- and Four-Digit Numbers in Japanese Sign Language, Taiwan Sign Language, and Korean Sign Language</a>
Vol. 44, No. 4	<b>Articles</b> SUZUKI Hideaki, <a href="#">To Listen to the Beat of Maritime World (Kaiiki Sekai): Seasonality of the 19th Century Western Indian Ocean World</a> NIWA Norio, <a href="#">Private Exploration in the United States in the 1930s: Analyzing the Toshio Asaeda Expeditions Itinerary and Routes</a> <b>Research Note</b> MISHIMA Teiko, <a href="#">Cultural Movement and Regional Radio of Soninke:Ethnographic Study on “Culture Week”</a>

Senri Ethnological Studies (SES)

Senri Ethnological Studies presents individual works, article collections, and annotated bibliographies regarding specific peoples, regions, or themes, with the goal of publicizing in Japan and overseas the results of research conducted by the Museum. An occasional publication

No. 101	KIKUSAWA Ritsuko and Fumiya SANO (eds.), <i>Minpaku Sign Language Studies 1</i>
No. 102	SONODA Naoko (ed.), <i>Conservation of Cultural Heritage in a Changing World</i>

Senri Ethnological Reports (SER)

The purpose of Senri Ethnological Reports is to publicize as quickly as possible the results of research conducted by the Museum's faculty, cooperating faculty, and research fellows. SER publishes the results of field investigations regarding specific peoples, regions, or themes that require preliminary reports, as well as items of a source material nature such as bibliographies and data collections. Published in Japanese and other languages. Occasional publication.

No. 149	KISHIGAMI Nobuhiro (ed.), <i>Whaling Cultures in the World: Current Status, History and Locality</i>
No. 150	KAWAI Hironao and Wei-An CHANG (eds.), <i>Hakka Ethnicity and Their Global Experiences: A Contemporary Perspective on the Chinese Diaspora in “South Side Countries”</i>

TRAJECTORIA

TRAJECTORIA is an international online peer-reviewed multimedia journal situated at the intersection of anthropology, heritage studies, museum studies, and the arts, published by the National Museum of Ethnology in Osaka, Japan.

Vol.1	<b>Article</b> MURAHASHI Isao, <a href="#">Creatively Utilising the Encyclopaedia Cinematographica Film Project: Visual Repatriation of the Masakin</a> <b>Special Theme</b> An Approach of the Info-Forum Museum: To Create a Source Community-driven Multivocal Museum Catalog ITO Atsunori, <a href="#">Introduction</a> HAYS-GILPIN Kelly, Atsunori ITO and Robert BREUNIG, <a href="#">Decolonizing Museum Catalogs: Defining and Exploring the Problem</a> CHAVEZ LAMAR Cynthia and Jim ENOTE, <a href="#">Demonstrational Lecture of the Collection Review Reserch</a> BOAST Robin, <a href="#">Database as Collaborative Environment</a> COLWELL Chip, <a href="#">Collaboration Is Only a Tool to Decolonize the Museum</a>
-------	--



Minpaku Tsushin Online

Minpaku Tsushin Online is a magazine that describes the academic characteristics and unique features of and achievements resulting from individual research projects conducted at the Museum in a manner that is comprehensible to researchers and the general public. The magazine launched online publications in FY2019 and has published electronic books.



<b>Start up</b> <b>Inter-University Reserch Project</b> The Anthropological Study of Historical Memory and Emotions on the Intercourse with Other Peoples in Oceania and Island Southeast Asia KAZAMA Kazuhiro, <a href="#">Investigation of ‘Historicity’ in the Post-truth Era</a> <b>Inter-University Reserch Project</b> Ethnography of Capital and Power: Towards an Ecology of Publicness NAITO Naoki, <a href="#">Why the Ecology of Public Spaces?: To Observe and Listen Carefully to Latent Presence</a> <b>Inter-University Reserch Project</b> Production and Consumption of Traditional Textiles: The Transformation of Local Perceptions through the Politics of Cultural Heritage and Tourism NAKATANI Ayami, <a href="#">Features of Traditional Textiles in Japan and beyond: Tradition, Innovation and Succession</a> <b>Inter-University Reserch Project</b> Anthropological Inquiries into Uncertainty, Apprehension, and Responsibility NISHI Makoto, <a href="#">Steps to an Ecology of Care</a> <b>Inter-University Reserch Project</b> Narrative Politics of “Tolerance Intolerance” in the Global Era YAMA Yoshiyuki, <a href="#">A Study on Contemporary Stranger Theory as Narrative Politics</a> <b>Inter-University Reserch Project</b> Experimental Film Project for Extended Interdisciplinary Fields FUJITA Mizuho, <a href="#">The Interdisciplinary Study of Time-Based Media Works</a> <b>Inter-University Reserch Project</b> A Study on the Dynamism of Tourization and De-tourization in the Age of Globalization AZUMA Kentaro, <a href="#">Rethinking Tourism and Re-conceptualizing the Anthropology of Tourism</a> <b>Inter-University Reserch Project</b> Anthropological Study of Human Burial Practice and Culture in Asia and Pacific Islands ONO Rintaro, <a href="#">Homo Sapiens and Burial Practice in Island Environments</a> <b>Inter-University Reserch Project</b> Reevaluation of Anthropological Theories in the Realm of Chinese Studies: 12 Topics KAWAI Hironao, <a href="#">Why Do We Need to Reevaluate Anthropological Studies on China Region Now?</a> <b>Inter-University Reserch Project</b> Re-construction of the Notions of Movement in Human History: With Focus on Friction between “Free” and “Unfree” SUZUKI Hideaki, <a href="#">Seeking for the Human History-wide Notions of Movement through Multi-Diciplinary Approach</a> <b>Inter-University Reserch Project</b> Dietary and Staple Food in the Sustainable Society NOBAYASHI Atsushi, <a href="#">On the Beginning of the Joint Research Project “Staple Food and Civilization”</a> <b>Inter-University Reserch Project</b> Rethinking Ethnographic Records of Seiichi Izumi with Emphasis on Saru River Research ŌNISHI Hideyuki, <a href="#">Reexamination of “Iwor” Drawn by Sei’ichi Izumi from Present Perspectives and Activities in Ainu Culture Promotion</a> <b>Inter-University Reserch Project</b> Interactions between Sensuosity and Institutions: Examining Evocation and Valuation in Art Practices OGATA Shirabe, <a href="#">Exploring Various Interactions between Sensuosity and Institutions</a> <b>Inter-University Reserch Project</b> Anthropological Studies of Mobilities and Materialities FURUKAWA Fukachi, <a href="#">Following the Material Aspects of the Movements of People in the Modern World</a> <b>Overseas Research Trends</b> OSAWA Yoshimi, <a href="#">Trends in Collaborative Research Using Ethnobotany Collection: Economic Botany Collection at the Royal Botanic Gardens, Kew</a> KAMINO Chie, <a href="#">Trends in Ethnomusicology in United Kingdom: Interdisciplinary Collaborative Research Projects</a> SUEMORI Kaoru, <a href="#">Survey Reports on Collection Management and Storage Facilities in the Netherlands</a> FURUKAWA Fukachi, <a href="#">Productions of the Anthropological Knowledge in the British Seminar Culture</a>
---

Publications outside the Museum

MORI Akiko (ed.), <i>The Emergence of Care: Living with Others</i> , Nakanishiya Publishing
ISHIMORI Daichi and NIWA Norio (eds.), <i>Anthropology of “Religion and Development” : Globalizing Postsecularism and Development Discourse</i> , Shumpusha Publishing
IKEYA Kazunobu (ed.), <i>Following the History of Homo Sapiens through Beads</i> , Showado



Minpaku Repository

By using NII's (National Institute of the Information) institutional repository system,the Minpaku Repository,which includes in its holdings Minpaku's own publications,allows an open access to *Senri Ethnological Studies*, *Senri Ethnological Reports*, *the Bulletin of the National Museum of Ethnology*, *Senri Ethnological Research Reports Supplements*, *Minpaku Tsushin*, and authorized theses and dissertations which were published outside of Minpaku. As at the end of FY2019, the total number of publications in the repository was about 4,934. The average number of paper downloads was about 45,032 per month. In FY2019, we began the registration of TRAJECTORIA, a newly published electronic journal.



Joint-Use Facilities for Scientific Research

Purpose of establishment

The museum has nondestructive testing and material analysis equipment systems to conduct primary analysis of folklore materials, cultural assets, and museum materials. The facilities was established in December 2017 to promote the active use of the systems by various organizations and researchers in cultural anthropology and relevant disciplines in its peripheral domains thereby contributing to increased joint use in scientific researches.

List of equipment

- X-ray CT scanning system
- 3D printer
- Three-dimensional measuring system
- Pyrolyser gus chromatograph - mass spectrometer
- Ion exchange chromatograph
- X-ray fluorescence spectrometer
- Temperature and humidity chamber
- Fourier transform infrared spectrophotometer (FT-IR)
- Digital microscope



X-ray CT Scanning System



3D Printer

Records of Use

2018

Records of Use	Organizations that used the facilities
9 cases	National Institutes for Cultural Heritage, Kyoto University of Art and Design, Mitsui Memorial Museum, Siga Prefectural Board of Education, Nagahama Castle Historical Museum, Hino Town Board of Education, etc

2019

Records of Use	Organizations that used the facilities
13 cases	Hitotsubashi University, Hokkaido University, Tenri University Sankokan Museum, Otsu City Museum of History, Kesennuma City Board of Education, Maibara City Board of Education, Daitokuji Temple, NouHakusan Shrine, Jinne-in Kannonji temple, UmamiokaWatumuki Shrine, etc



Examination Using X-ray CT Scanning



Examination Using X-ray Fluorescence Spectrometer

How to use

Please contact the Artifact Management Unit of the Information Planning Section if you are interested in using the systems.

Artifact Management Unit of the Information Planning Section

TEL +81-6-6878-8392

FAX +81-6-6878-8242

Mail hyohons@minpaku.ac.jp

Minpaku Library

Service Information

Daily from 10:00 a.m. to 5:00 p.m.(Entry permitted until 4:30 p.m.), except Sundays, National Holidays, and days that the Museum is closed.

Visitor qualifications: The library is open to all. The library card is required for lending books. Some materials may not be available.

1. Encouraging Educational and Research Activities

Minpaku's library collection includes many highly specialized works. Facilities include four microfilm readers and a color copy service. The library is staffed by qualified librarians and provides full support for the educational and research activities expected of an Inter-University Research Institute.

2. Promoting Public Access to the Library Catalog through the National Institute of Informatics

In FY2019, printed materials in 22 languages were cataloged, and the repository's holdings reached 633,415 volumes.

Under the NACSIS-CAT (a comprehensive national database of general indices) Retrospective Entry Project, 2,748 microfiche records (books 2,607 items and 141 articles of 2 titles of newspapers/magazines) were entered. With this, 97% of Minpaku's library data have now been entered.

3. Social Contributions

All users can check out books from the library. As of FY2019, the library had 232 outside registered users making regular use of the library, who borrowed 1,465 items.

4. MINPAKU Library Catalog

The library catalog is open to the public and can be searched by anyone, anywhere from a personal computer or mobile phone. In FY2019, the catalog was accessed from computers 556,075 times and from mobile phones 138,918 times.



Library Reception Counter



Current Periodicals Section



Neatly Archived Materials

Ethnology Research Archives

Since its establishment, the Museum has accumulated a wide range of resources, like research notes and papers of anthropologists and ethnologists, including audio-visual records from their fieldwork. To make good use of these materials, the Archives group under Information Management Committee continued in FY2019 to investigate the condition of archive resources and to develop inventory lists. The Museum will investigate continuously the condition of archive resources and develop and digitalize inventory lists, with the aim of making them open to public.

- AOKI Bunkyo Archive
  - ISHIGE Naomichi Archive
  - IZUMI Seichi Archive
  - IWAMOTO Kimio Archive
  - UCHIDA Isao: East Asian Culture Archive Mainly for Taiwan and Japan in 1930s
  - UMESAO Tadao Archives
  - EGUCHI Kazuhisa: AfricaAsia Language Archive
  - OUCHI Seiko Archive
  - OKI Morihiro Archive (Indian Ethnological Cultural Resource Archive)
  - KATSURA Yonenosuke Archive
  - KANO Tadao Archive
  - KIKUCHI Nobuyuki Archive
- KIKUZAWA Suelo Archive
  - KURITA Yasuyuki and BEFU Harumi: Japanese Gift-giving Archive
  - KOBAYASHI Yasuyoshi: Southern Taiwan Indigenous People Archive
  - SHINODA Osamu Archive
  - SUGIURA Kenichi Archive
  - The Japanese Scientific Expedition for Nepal Archive
  - HIJIKATA Hisakatsu Archive
  - MABUCHI Toichi Archive
  - MARUTANI Akira: Kutsugi Village Harihata Life Data Archive
  - "Regional Typology of Japanese Culture Study Group" Archive

UMESAO Archives

April 2013 saw the creation of the Umesao Archives, where the enormous volume and variety of field notes, sketches, photographs, memos, draft manuscripts, publications, reviews and other intellectual assets produced by Minpaku's first Director-General, UMESAO Tadao, are stored. An archivist will analyze and organize this material and provide support primarily for scholarly research.



Materials

Items in the Museum Collections Offered for Loan FY2019

In addition to using the items in its collection for internal research activities, the Museum offers items for loan to universities, other museums, and external organizations for educational and research purposes as part of its efforts to contribute to the public interest. To inquire about borrowing items from the Museum's collection, contact the Minpaku Collections Help Desk. A total of 283 inquiries were received during FY2019.

Minpaku Collections Help Desk

TEL/FAX +81-6-6878-8213

URL <https://www.minpaku.ac.jp/english/research/sharing/helpdesk>

1. Number of Loans Made: 11, Number of Items Loaned: 594

Among the projects listed above, those for which the Museum's lending resources comprise more than 50% of the entire exhibit items are the following:

Borrower	Exhibition Title	Loaned Items	Exhibition Period	Items Loaned / Total Number of Items Loaned / % of Loaned Items Relative to the Entire Exhibition
National Museum of Nature and Science,Tokyo	Special Exhibition co-organized by National Museum of Ethnology, and National Museum of Nature and Science "Beads in the World: Connecting People with Nature"	Beads	April 9 - June 16, 2019	114 items / 225 items, 51%
Yokohama Museum of EurAsian Cultures	Exploring 50 years of Livelihood and Landscape Change in Wadi Fatima, Saudi Arabia: Ethnographic Collections of Motoko Katakura, a Japanese Female Cultural Anthropologist	Saudi Arabia related materials	October 5 - December 22, 2019	68 items / 90 items, 61%
Hankyu Department Store Osaka	Handmade Dresses of the World: The National Museum of Ethnology Collection	clothes	November 11 - November 26, 2019	181 items / 181 items, 100%
Matsuura Takeshiro Memorial Museum	Special Exhibition "World of EZO-MANGA"	Ainu related materials	January 21 - March 19, 2020	53 items / 63 items, 84%

2. Number of Special Loans (i.e., Loans for the Purpose of Photo-shooting, Close Examination for Research or Loan of Original Film): 97, 3,563 items

Of the above, 17 loans were made to universities for the use of photographs as references for survey research and writing, 22 were made to museums for the use of photographs in survey research and exhibitions.

3. Number of Loans of Audio-visual Materials: 153, Number of Items Loaned: 6,004

Of the above, 47 loans were made to universities (218 items), and 38 loans to individual researchers and research groups (5,485 items).

4. Books and Periodicals

Number of special use (Use of original film or photo-shooting) 7 (of which 6 were for the use of photos as references for survey research and writing)

Photocopy orders: 4,211 (of which 2,882 were from universities)  
Inter-library loans: 496 (of which 442 were from universities)  
Photocopy orders: 229  
Inter-library loans: 379

5. Research Archive Materials

Number of browsing instances: 71  
Number of instances of special utilization: 13

Storage of Academic Materials

The Museum has accumulated a large collection of academic materials through its research. Many of the materials are organic artifacts that generally have the least resistance to insect and fungus damage. Therefore, the Museum takes special measures to repel and kill insects and protect its collection. For example, newly acquired artifacts from abroad are taken to a fumigation chamber where they are treated with chemical insecticides and germicides, because the natural environment and ecosystem of their place of origin are substantially different from those of Japan. Artifacts that have insect damage in Japan, however, are subjected to a non-chemical insecticidal process as required, due to the nature of the materials. In this way, different insecticidal processes are used, depending on the place of origin, the extent of damage, and the nature of the materials. To enhance insecticidal efficiency and better protect artifacts from insect damage in a unique way, in 2007 a large high/low temperature walk-in treatment chamber was installed in the Museum and the existing fumigation chamber was upgraded to a multi-functional chamber capable of carbon dioxide treatment and low oxygen concentration treatment. Also, a catalytic combustion type chemical abatement system was introduced to ensure the safe treatment of waste chemicals, thus realizing a materials management system that is friendly to people, artifacts, and nature. These state-of-the-art systems are one of the results of the research on the conservation science of artifacts that the Museum and other university researchers have been jointly conducting to ensure effective use of its artifact collection.



Artifact Storage Area



The High/Low Temperature Walk-in Treatment Chamber



A Multi-functional Fumigation Chamber Capable of Carbon Dioxide and Low Oxygen Concentration Treatments

Utilization of Minpaku for University Students and Faculty Members

We have established a system to encourage wide-ranging utilization of our research outcomes, exhibits, archived resources, cultural and academic information and facilities, for university education and research.

Use of Exhibition Halls

If you wish to use the Exhibition Halls for a lecture, seminar or official event (such as an orientation meeting for new students) of your university under the supervision of a faculty member, we will waive the admission charges, if you apply before the event.

If a faculty member can not supervise the event, or if a professional or specialized training college wishes to use the Museum for a specialist training course, the admission charges will be discounted upon presenting the syllabus or any document that describes the syllabus content.

Use of the Library

We have approximately 670,000 books and other media resources that focus mainly on cultural anthropology and ethnology. We encourage visits to the Library as a part of university education.

Use of Artifacts and Resources

We have approximately 345,000 artifacts and resources collected from all over the world. They can be used for university education or research for free, under certain conditions.

Use of Video and Sound Resources

We have approximately 70,000 Audio-visual Materials from all over the world, including those produced by Minpaku. You can view about 814 Videothèque Programs on DVD.

Use of Databases

An enormous amount of information is provided in our databases for collections and research results.

Development of Young Researchers

"Minpaku Junior Researcher's Seminar" is regularly held to promote joint use of the museum by young researchers. The two-day seminar consists of a keynote speech by museum faculty and presentation and discussion by participants. Additionally, it organizes library and storage area tours for young researchers to know more about various joint use systems and a facility directory.



Use of Exhibition Halls

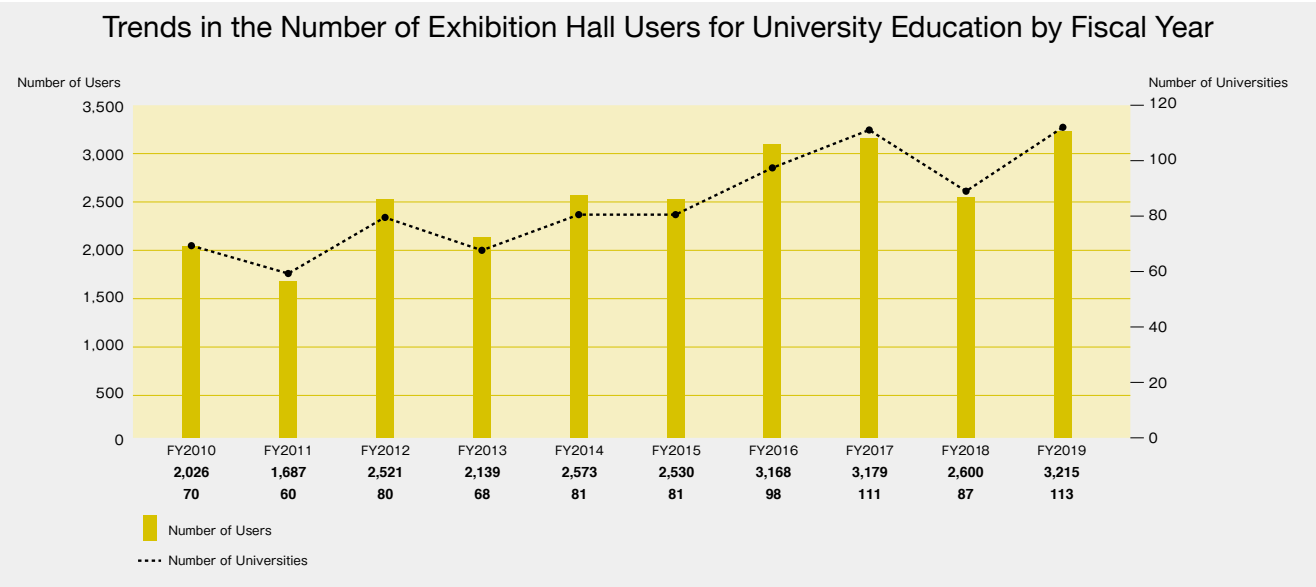


Use of Databases



Minpaku Junior Researcher's Seminar

Records of Use (Free-of-charge Use) 113 Universities, 3,215 users (FY2019)





Exhibitions

Concept and Organization of Exhibitions

At the National Museum of Ethnology, exhibitions are designed to present the latest achievements of anthropological, ethnological and other related scientific research to the public through a variety of media. In doing so, the Museum hopes to enhance public awareness of different cultures around the world and foster greater cross-cultural understanding. The exhibitions consist of Main Exhibitions and the Special Exhibitions. The Main Exhibitions are mostly permanent, and are designed to deepen understanding among visitors of cultural diversity and commonality. The Special Exhibitions, on the other hand, highlight specific topics and are held several times annually for a limited period of time.

Main Exhibitions

The Main Exhibitions are arranged into regional and cross-cultural exhibitions. The regional exhibitions cover Oceania, the Americas, Europe, Africa, and Asia, including Japan. The regional exhibitions start with Oceania, and progress as if traveling eastwards around the world to finish in Japan.

This arrangement allows visitors to view Japanese culture in comparison with other cultures. In designing the exhibitions, the National Museum of Ethnology adhered to the notion that all human cultures around the world have equal value; the notion has remained unchanged since the inception of the Museum. Accordingly, the exhibitions are designed to help visitors respect cultural differences among peoples, represented in the rich diversity of human lifestyles. These exhibitions are also characterized by their emphasis on clothing, food and housing, which gives visitors a clear idea about lives in different regions around the world. The cross-cultural exhibitions, on the other hand, focus on specific themes, not regions, and currently accommodate exhibitions on music and language.

Given the substantial changes of the social and cultural situation in the world since Minpaku's opening in 1977, the Museum has been renovating its exhibitions since FY2008, and it has completed in FY2016.

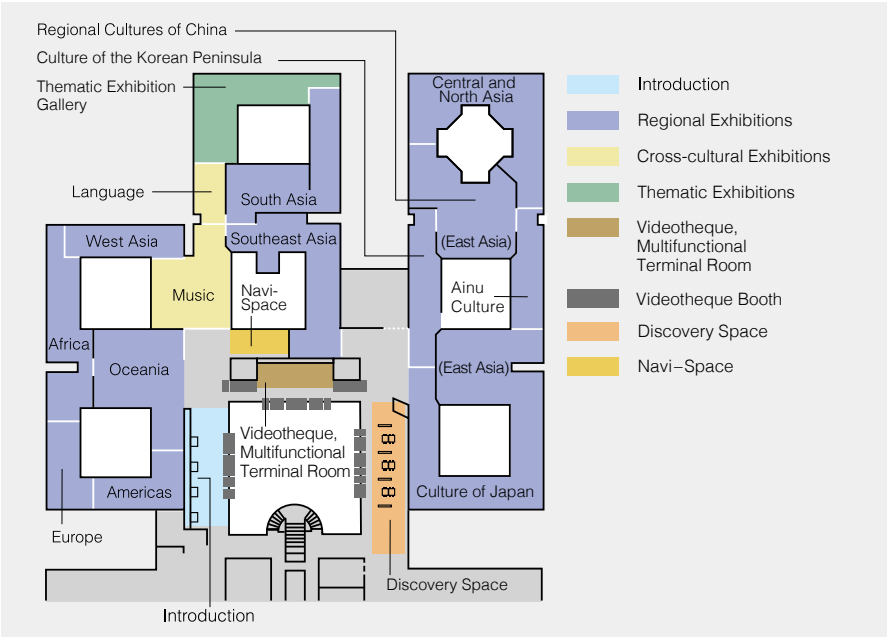
In the Thematic Exhibition Galleries in the Main Exhibition Hall, temporary exhibits display themes related to contemporary issues and cutting-edge research. Other individual themes are also presented.

These Thematic Exhibition Galleries can also be used as a shared exhibition gallery to expedite displays of the latest research trends of universities and other institutions in Japan and overseas.

The Museum encourages the introduction of information devices into its exhibits. One such device is the Videotheque. As the world's first on-demand video library of its kind, it was developed by the Museum when it opened its doors to the public. Video programs provide visitors with glimpses of the living cultures of the world's peoples and let them see how the artifacts shown in the Main Exhibition Hall are actually used. The system allows visitors to select a video program from the Museum's collection, which now contains 814 titles. The second example of information devices held by the Museum is the Minpaku Digital Guide, which was developed in 1999 as the world's first portable audiovisual device to describe exhibits. The portable guiding device uses videos and voices to describe how the items exhibited were used, in what locations they were used, and by what kind of people they were used. Now, the system allows visitors to watch videos describing the exhibits on smartphones while checking their locations on the explanatory hall map displayed in their hand. This electronic guide was renewed in 2020 as a system equipped with new functions such as guidance for museum facilities and a link with Videotheque. These videos have been translated into multiple languages. Videotheque now provides 135 programs, out of the total of 814 programs, in nine different languages.

In addition, English subtitle data for 301 programs, out of the total of 328 programs, have been prepared for the Minpaku Digital Guide.

In the Discovery space, visitors can use the terminals to access and compare a wealth of information on artifacts currently on display. Related books and journals as well as Minpaku publications are also available.



**Minpaku Digital Guide**  
This guide describes facilities and exhibits in the Exhibition Halls using the museum map. It shows videos and information related to the locations artifacts were found, how they were used, and by whom they were used. Explanations are currently available in nine languages, including Japanese, English, and Chinese. (The Minpaku Digital Guide was used by 7,229 visitors in total during FY2019. )

Regional Exhibitions

The regional exhibitions focus on Oceania, the Americas, Europe, Africa, West Asia, South Asia, Southeast Asia, Central and North Asia, and East Asia. The figures appearing next to each exhibition space's name indicate the exhibit area in square meters.

Oceania 660m<sup>2</sup>



**Human Dispersal into Oceania** **Living off the Sea** **Living on Islands**  
**Contact with the Outside World** **Expressions of Indigenous Identity**

In Oceania, tens of thousands of islands, large and small, are scattered across the surface of the ocean. The islands are inhabited by peoples who grow root and tree crops and are highly skilled in the arts of seamanship and navigation. In the sections "Human dispersal into Oceania", "Living off the Sea", and "Living on Islands", we explore the diverse techniques developed to survive in island environments with limited resources. We also examine how indigenous cultures have been affected by encounters with the outside world in the sections "Contact with the Outside World" and "Expressions of Indigenous Identity".

Europe 250m<sup>2</sup>



**Agriculture and the Annual Cycle** **Religions and Beliefs**  
**Industrialization** **Europe in Transformation**

From the 16th to the 20th centuries, Europe was the center from which Christianity and modern institutions, technologies, and knowledge spread around the world. Now the tide has turned, and immigrants from all over the world are making themselves part of European society. Here we explore the interactions of tradition and religion, rationalization and industrialization, and immigration in the formation of modern Europe, focusing on the concept of "time".

The Americas 320m<sup>2</sup>



**Encounter** **Eating** **Clothing**  
**Prayer** **Creativity**

The vast expanses of the Americas range from polar regions to tropical rain forests and encompass a huge diversity of natural environments. Peoples adapting to these environments developed distinctive lifeways. Then came conquest and colonization by European peoples, with foreign influences permeating everyday life. Here our focus is on clothing, diet and religion. While clarifying the relationship between their underlying diversity and historical influences, we also draw attention to traditional artists and craftsmakers who creatively combine tradition with modern values in their works.

Africa 500m<sup>2</sup>



**Excavating History** **Urban Life** **Work** **Adornment**  
**Prayer** **Africa Today**

Africa, the birthplace of humanity, has gone through profound changes and has always been tied to the outside world. The diversity of cultures and languages that we see in the African continent today is the result of these changes. In this exhibit, we introduce the way in which people live in Africa today, focusing on four different aspects—"urban life", "work", "adornment" and "prayer". We also look at the efforts people are making to rediscover their history. We hope that this exhibit fosters renewed understanding toward the people of Africa, who live in the same present as we do.



## West Asia

310m<sup>2</sup>

Religion  
Living in the Desert  
The Palestinian  
Diaspora  
Coffee as  
Global Culture  
Sound Culture  
and Pop Culture



The people of West Asia, or the Middle East, call their land in Arabic *mashriq*, 'the land of the rising sun'. Historically, they have kept close ties to the *maghrib*, 'the land of the setting sun', that is, North Africa. These regions consist mainly of dry lands inhabited by nomadic peoples. At the same time, urban cultures flourished in large cities such as Baghdad and Cairo. Islam is the majority religion in West Asia, but this region is also the cradle of Judaism and Christianity. This gallery highlights religious practices, nomadic life, women's dress, and music and dance to show how global change has reached the lives of people in West Asia.

## Southeast Asia

730m<sup>2</sup>



Subsistence  
Everyday Life in a Village  
Urbanscapes  
Entertainment and Recreation

Southeast Asia is encompassed by forests and seas. The climate is tropical to subtropical; people start work early in the morning, and return home and nap in the middle of the day when temperatures can approach 40°C. In the evenings and after squalls have passed, temperatures start to fall. People go out to shop or go back to work in their fields. In the cool of the evening they relax, head to outdoor stalls for meals with friends or family, or relax and enjoy traditional performing arts. The theme of this exhibit, which introduces a rich variety of ethnic cultures, is "A Day in the Life of Southeast Asia".

## South Asia

600m<sup>2</sup>



Religion – Tradition and Diversity  
Ecology and Subsistence  
Urban Popular Culture  
Tradition and Trends in Textiles  
South Asia on the Move

South Asia extends from the mountain ranges in the north, to the Arabian Sea in the west, and the Bay of Bengal in the east. In this region there is a vast range of natural environments inhabited by peoples with an enormous diversity of religions, cultures, and ways of life. Wisdom of coexistence developed over the centuries, and, despite rapid industrialization, is preserved to this day. This gallery exhibits a diverse array of religions, livelihoods and crafts, together with new forms of popular culture emerging primarily in urban settings, and the booming textile culture in the midst of globalization.

## Central and North Asia

710m<sup>2</sup>



Living with Nature  
The Socialist Era  
Central Asia  
Mongolia  
Siberia and the Arctic

Central and North Asia is an immense region occupying the northeast of the Eurasian continent. It has long been a crossroads for interactions linking east and west, north and south, where many diverse peoples have mingled. After undergoing socialist rule during the twentieth century, the region has shifted to market economies. Caught up in the wave of globalization, traditions are being reevaluated. This exhibit has three sections on "Central Asia", "Mongolia", and "Siberia and the Arctic", along with two sections accentuating the key themes of "Living with Nature" and "The Socialist Era."

## East Asia

Culture of the Korean Peninsula 330m<sup>2</sup>



Spiritual Worlds  
Housing  
Food  
Clothing  
Recreation  
Knowledge

The inhabitants of the Korean peninsula developed their own distinctive culture under constant influence from other ethnic groups. Cultural elements adopted from Eastern Siberia in prehistoric times, and later from China, were reworked and domesticated to become distinctively Korean. The result is a culture with a level of integration rarely found elsewhere in the world. In modern times, Korea was colonized by Japan, then split in two after independence and rapidly modernized. In today's world, Koreans are actively migrating to other parts of the world, and people of Korean descent can be found living outside Korea. Spiritual worlds, everyday life, recreation, and knowledge are the themes of this exhibit, which introduces the multilayered history and energetic character of this culture.

## East Asia

Ainu Culture 270m<sup>2</sup>



The Ainu People  
Kamuy and Nature  
Present and Future

The Ainu are an indigenous people who developed a culture adapted to the cold natural environment of the northern part of the Japanese archipelago, primarily in Hokkaido. Domination by the Tokugawa Shogunate during the Edo period and assimilation during the Meiji period led to discrimination against the Ainu and imposed hardships on them. In recent years, Japan's government has acknowledged this history and been taking steps that show respect for the Ainu people. Here we introduce the evolving situation of the Ainu, who continue to honor their traditions and strive to create a new and distinct culture.

## East Asia

Regional Cultures of China 660m<sup>2</sup>



Subsistence  
Musical Instruments  
Zhuang Stilt House  
Costume  
Crafts  
Taiwan Indigenous Peoples  
Religion and Writing  
Chinese Overseas  
Transmission of Chinese Tradition

The Chinese landscape is immense and highly diverse, both in altitude and topography. Its variety of natural environments has fostered a wide range of ethnic cultures. Han Chinese account for over 90% of China's population, and, while concentrated in the plains, are spread throughout the nation. Mainland China is also home to 55 minority peoples, who live for the most part in the highlands or grasslands in southwest, northwest, and northeast China. In Taiwan, indigenous groups speaking diverse Austronesian languages live alongside Han Chinese. Chinese overseas all over the world regard China as their ancestral homeland. This exhibition introduces a diverse range of Chinese ethnic life ways. Taking into account historical and local characteristics, the exhibition explores livelihoods, costume, musical instruments, dwellings, crafts, religion and writing, Han Chinese marriage ceremonies and ancestor worship, Taiwan indigenous peoples, and Chinese overseas.

## East Asia

Culture of Japan 1,460m<sup>2</sup>



Ritual, Festivals and Performing Arts  
Okinawan Lives  
Multiethnic Japan

Stretching from Hokkaido in the north to Okinawa in the south, the long, narrow Japanese archipelago is blessed with a rich variety of ecological niches. The combination of diverse natural environments and contacts with neighboring cultures has resulted in formation of distinct local traditions. In addition, many people from other countries have also come to live in Japan in recent years, adding new elements to the mix. In this section we approach Japanese culture from four perspectives: Festivals and Performing Arts, Everyday Life, Okinawan Lives, and Multiethnic Japan.



Cross-cultural Exhibitions

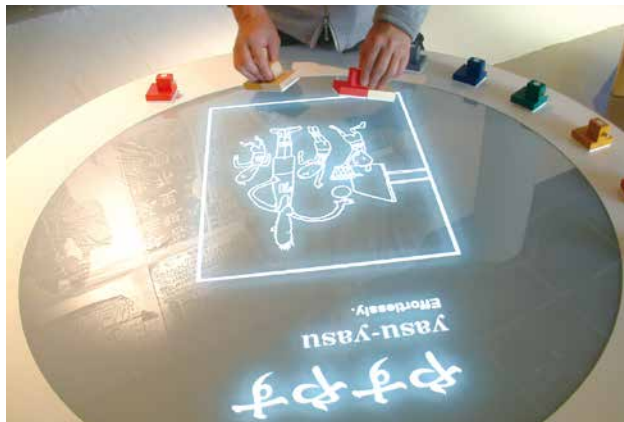
Music 550m<sup>2</sup>



Drums: A Spirited Sound    Gongs: The Sound of Power  
Oboe: Performing Sounds    Guitar: Sounds in History

Through sounds, we humans convey messages, express emotions, know our surroundings, imagine far away times and places, inspire or console ourselves, and communicate with gods and spirits. With examples from all over the world, this exhibition shows how sounds and music are deeply related to our identity as humans.

Language 170m<sup>2</sup>



Components of Language  
Language diversity  
Writing Systems of the World

Whenever people meet and interact, the need for communication arises and pieces of information are continuously exchanged through various means. Among these, language, shared exclusively by human beings, is a highly developed tool which enables us to express emotional states, describe our deepest thoughts, and to pass intellectual knowledge beyond space and over generations. Language is our irreplaceable heritage, reflecting our diverse cultures and serving as a window for understanding people's cognitive and creative abilities.

Information Zone

Introduction



The exhibits in the Introduction section are designed to enable visitors to experience directly how anthropologists and ethnologists think and how Minpaku exhibits could be explored. Here is where your global journey starts.

Videotheque



We developed the Videotheque in 1977 as the world's first on-demand video library of its kind. It contains video programs that introduce rituals, performing arts, and the living cultures of peoples around the world, as well as information on the artifacts on exhibit at the Museum. We have continued to make improvements and produce multimedia programs and rare research videos shot by our researchers during their fieldwork to be available for viewing. The FY2012 improvements in our existing system include fuller menus that allow the viewing of programs from multiple perspectives. Booth interiors have been upgraded to offer a brighter and improved audio environment. Some of the booths were renewed in FY2019 to link the screening of high-resolution videos with Minpaku Digital Guide and to expand the range of multilingual translation. Furthermore, we have added new booths that are accessible to visitors using wheelchairs.  
(There were 49,144 requests for Videotheque programs in FY2019.)

Discovery Space



Research Desk    Deepen Your Knowledge  
Voices from the Field    Connect to the World  
Touch the World    Widen Your Perspectives

In the Discovery Space, visitors may search for more information about exhibits at the Research Desk. Materials related to Minpaku researchers' projects can be found at Voices from the Field. Touch the World provides an opportunity to handle as well as see exhibit materials, to gain a deeper understanding of them. Visitors are invited to learn more about the artifacts on exhibit, to satisfy their curiosity about what Minpaku researchers are studying, and to experience artifacts directly.

Special Exhibitions

Toys Expo—Children in Modern Japan

March 21 – May 28, 2019

Organizers: The National Museum of Ethnology

Project leader: SASAHARA Ryoji

Organizing Committee members:

[Internal members] HIDAHA Shingo, TERAMURA Hirofumi

[External members] KORESAWA Hiroaki, UCHIDA Yukihiko, GOTO Tomomi, INOUE Kaori, SUGIYAMA Shoji, ZINNO Yuki, MORISHITA Misako, KORESAWA Yuko, YAMADA Shinya, HAMADA Takuji, KAGAWA Masanobu, TAKIGUCHI Masaya, KAMEKAWA Yasuteru, INABA Chihiro, KOYAMA Mizue

Planning cooperation: Japan Toy Culture Foundation

Cooperation: Otsuma Women's University, The Senri Foundation, The Research Institute for Humanity and Nature



From the Meiji Era, Japan introduced technologies and knowledge, established military and school institutions by the nation, and was greatly changed by defeat in World War II. All of those influences affected the children's status and the view of children held by people at that time. The exhibit investigates children and social changes involving children with toys from the Edo Era to the postwar era.

REGNUM IMAGINARIUM:  
Realm of the Marvelous and Uncanny

August 29 – November 26, 2019

Organizers: The National Museum of Ethnology

Project leader: YAMANAKA Yuriko

Organizing Committee members:

[Internal members] SASAHARA Ryoji, MATSUO Mizuho

PR Assistance: Japan Broadcasting Corporation OSAKA STATION

Cooperations: Muséum national d'histoire naturelle, Museum Volkenkunde, Osaka Aquarium KAIYUKAN, International Research Center for Japanese Studies, National Museum of Japanese History, SQUARE ENIX CO., LTD., The Senri Foundation, Hyogo Prefectural Museum of History, Yumoto Koichi Memorial JAPAN YOKAI MUSEUM (Miyoshi Mononoke Museum)

Object Loans from: National Diet Library, Japan, Keio University Library, Tohoku University, Hachinohe City Museum, Kyushu National Museum, Akashi City Museum of Culture, Tokoji, Zuiryūji, EMOTO Hajime, TATSUMI Manjiro

Planning Cooperation: IGARASHI Daisuke, HASEGAWA Tomohiro



Why has mankind imagined and given form to mysterious creatures that may or may not exist in this world? Strange and uncanny, creepy but cute, here is an enormous collection of sacred, mythical and monstrous beasts from around the world! We present creatures created by contemporary artists, manga artists and game designers, and explore the imagination and creative power that is the source of these ghosts and monsters.

Awards

"Award from the Director-General of the Commerce and Information Policy Bureau, Ministry of Economy, Trade and Industry, at the 61st Japan Catalogue Exhibition"

Award given to: Special Exhibition Catalogue

"REGNUM IMAGINARIUM: Realm of the Marvelous and Uncanny"

Organizers: Japan Federation of Printing Industries (JFPI)

Exhibit provider: Kawade Shobo Shinsha

"Japan Typography Almanac 2020" Judge Award

Award given to: Special Exhibition

"REGNUM IMAGINARIUM: Realm of the Marvelous and Uncanny"

SATO Daisuke / Editorial Section

"Japan Typography Almanac 2020" Prize Winnng

Award given to: Special Exhibition "REGNUM IMAGINARIUM :

Realm of the Marvelous and Uncanny" Flyer, Poster

"Japan Typography Almanac 2020" Prize Winnng

Award given to: Creature Creators' Symposium

"Human Imagination and Nature" Flyer

Organizers: Japan Typography Association

Awardee SATO Daisuke (sato design.)



Thematic Exhibitions

Traveling Music: The String Instruments of South Asia

February 21 – May 7, 2019  
Organizers: The National Museum of Ethnology  
Project leader: TERADA Yoshitaka  
Organizing Committee members:  
[Internal members] FUKUOKA Shota, TAMORI Masakazu  
[External members] KOBINATA Hidetoshi, TANI Masato, YONEYAMA Tomoko, Jennifer Post  
Cooperation: Sandip K. Tagore, Tokyo National Museum, Yunus Emre Enstitüsü,  
The Senri Foundation  
Sponsorship: Air India  
Support: Consulate-General of India in Osaka-Kobe



Many of the stringed instruments in South Asia originated in Central and Western Asia and were eventually improved and established in South Asia. Some of these were modified in South Asia and taken to Southeast and Eastern Asia. This exhibition introduced this long-distance travel of stringed instruments with specific emphasis on South Asia.

Exploring 50 years of Livelihood and Landscape Change in Wadi Fatima, Saudi Arabia : Ethnographic Collections of Motoko Katakura, a Japanese Female Cultural Anthropologist

June 6 – September 10, 2019  
Organizers: The National Museum of Ethnology  
Project leader: NISHIO Tetsuo  
Organizing Committee members:  
[Internal members] SUGASE Akiko, AISHIMA Hazuki, KURODA Kenji  
[External members] NAWATA Hiroshi, ENDO Hitoshi, KATAKURA Kunio, KAWADA Naoko, FUJIMOTO Yuko, TAKEDA Tamako  
Cosponsors: Motoko Katakura Foundation for Desert Culture, Yokohama Museum of Eurasian Cultures  
Cooperation: “Modern Middle East Studies” NIHU Transdisciplinary Projects (Center for Modern Middle East Studies, National Museum of Ethnology,Akita University) “Info-Forum Museum for cultural Resources of the World” Projects, National Museum of Ethnology “Scientific Research on Innovative Areas-Platforms for Advanced Technologies and Research” Studies, Digital Picture Library for Area Studies (DiPLAS) related to fundamental resource support program and regional research  
Special Cooperation: Social Development Center in Wadi Fatima, Saudi Commission for Tourism and National Heritage, King Faisal Center, Anas Muhammad Melih (Director of Muslim World League Japan Office)  
Sponsors: Ministry of Human Resources and Social Development, Makkah, Saudi Arabia  
Special supports: Aramco Asia Japan K.K.



At the end of the 1960s, cultural anthropologist Dr. Motoko Katakura conducted long-term fieldwork that was seemingly unfeasible at the time at an oasis in western Saudi Arabia that had been affected by rapid social changes. She noticed the perspective of Saudi women as “those who watch” rather than “those who are watched.” This exhibition traces the transition of the living world of Saudi women through decorative masks, native costumes, and other distinctive and colorful artifacts of material culture while incorporating the results of the latest follow-up studies conducted after half a century based on valuable photographs taken by Dr. Katakura at the site.

Arte Popular: Contemporary Expression of Mexican Crafts

October 10 – December 24, 2019  
Organizers: The National Museum of Ethnology  
Project leader: SUZUKI Motoi  
Organizing Committee members:  
[Internal members] YAGI Yuriko  
[External members] YAMAMORI Yasuhito, KOBAYASHI Takanori, YAMAGOE Hidetsugu  
Support: Embassy of the United Mexican States in Japan

In Mexico, Mesoamerican civilization flourished in the prehispanic era, and various cultures came from Europe, Asia and Africa after the 16th century. As a result, a unique expressive culture was formed. Arte Poplar is not a work of artists who are blessed with special talent, but a generic term for artistic expressions by craftsmen and the general public. This exhibition shows a variety of Arte Poplar in Mexico today, such as ceremonial masks, yarn paintings, ceramics, and trees of life that are typical Mexican Arte Popular, as well as skeleton figures inundating in Mexican streets.



Cooperative Exhibitions

Special Exhibition co-organized by National Museum of Ethnology, and National Museum of Nature and Science  
Beads in the World: Connecting People with Nature

April 9 – June 16, 2019  
National Museum of Nature and Scienc  
Project leader: IKEYA Kazunobu

This thematic exhibition held in cooperation with the National Museum of Nature and Science, Tokyo, showed how beads were used by people by exhibiting these objects from the perspectives of ethnology and natural sciences, representing the respective areas of expertise of the museums and combining the wisdom of both.

Handmade Dresses of the World: The National Museum of Ethnology Collection

November 13 – 25, 2019  
Cooperations: Hankyu Umeda Main Store, The Senri Foundation  
Project leader: UEBA Yoko

Approximately 120 costumes from the 1920s to the present were selected from the Museum’s collection as examples of “cuteness.” Imagining the world of the people who wore these costumes provided opportunities for us to reflect on our own fashion.



Collection Exhibitions

Collection Exhibition: Toshio Asaeda and his Galápagos: Expeditions and Exhibitions of Natural History in the 1930s

January 16 – February 27, 2020  
Project leader: NIWA Norio

In 1932, a Japanese person visited the Galápagos Islands and recorded his observation. This exhibition of our collection introduces the albums, journals, and water-color paintings of Toshio Asaeda, a curator in the United States, a painter, a photographer, and a taxidermist, with an emphasis on the photographs he took.

Traveling Exhibitions

Exploring 50 years of Livelihood and Landscape Change in Wadi Fatima, Saudi Arabia : Ethnographic Collections of Motoko Katakura, a Japanese Female Cultural Anthropologis

October 5 – December 22, 2019  
Yokohama Museum of Eurasian Cultures  
Project leader: NISHIO Tetsuo

Thematic Exhibitions “Exploring 50 years of Livelihood and Landscape Change in Wadi Fatima, Saudi Arabia : Ethnographic Collections of Motoko Katakura, a Japanese Female Cultural Anthropologist” (June 6 – September 10, 2019) held at this museum became a traveling exhibition.

Toys Expo: Children in Modern Japan

October 12 – November 24, 2019  
Saitama Prefectural Museum of History and Folklore  
Project leader: SASAHARA Ryoji  
Special Exhibitions “Toys Expo: Children in Modern Japan” (March 21 – May 28, 2019) held at this museum became a traveling exhibition.

Others

Transforming Arms into Art: Peace-building in Mozambique

January 7 – February 10, 2020  
Ministry of Education, Culture, Sports, Science and Technology  
Project leader: YOSHIDA Kenji

In Mozambique in Africa, a civil war that started with the country’s independence in 1975–1992 left large numbers of weapons in the hands of civilians. A project called “Transformação de Armas em Enxadas (TAE, “Transforming Arms into Plowshares”),” is underway in an effort to collect the weapons by exchanging them for farming tools to promote disarmament and to create works of art using firearms that have been collected to help establish peace in people’s mind. This project is drawing attention as a model of post-war peace development. In 2012, two artists, Fiel dos Santos and Cristóvão Canhavato (Kester), created four pieces of art as part of this project to send a message to people living in Japan. These works of art are kept at the National Museum of Ethnology. This exhibition presented works collected by the National Museum of Ethnology and introduced activities to build peace through art.





JICA Knowledge Co-Creation Program:  
Implementation of “Museums and Community Development”

This program offers practical skills and know-how in acquisition, documentation, conservation, exhibition, and education, all of which are indispensable for museum operation. Through this course, museum specialists who will contribute to the cultural development of their respective countries or regions will be fostered.

Originally, the National Museum of Ethnology used to run the three-week “International Cooperation Seminar on Museology” as part of the JICA Museum Technology Course. In FY 2004, the program was re-designed as the four-month “Intensive Course on Museology” run by the National Museum of Ethnology and the Lake Biwa Museum, receiving full commission from JICA. Approximately 10 trainees from various countries and regions were accepted annually to this program specializing in museum activities. In FY 2012, after the Great East Japan Earthquake (2011), the program strengthened its focus on security and disaster prevention. At the same time, the program began closely working with tourism-related areas and also adopted a policy which encouraged participants to autonomously plan, implement, and disseminate their museum management activities based on what they learned from the program.

In FY2015, the program begun focusing on the role museums play in their respective communities and adopted a new title “Museums and Community Development”, which now runs for three months. In FY 2019, from August 30 to November 22, ten trainees from Armenia, Bhutan, Egypt, Fiji, Indonesia, Palestine, Sudan and Zambia were accepted to the program. In addition to lectures and activities at the National Museum of Ethnology, the program included participation in the 2019 Kyoto meeting of the 25th International Council of Museums (ICOM) held from September 1 through September 7, a session held with past trainees on September 3, and study trips to areas affected by the 2004 Chuetsu earthquake, the Chuetsu Earthquake Memorial Corridor, the Tokyo National Museum, the National Museum of Nature and Science, the Yokohama Museum of Art, the Mie Prefectural Museum, and the Hiroshima Peace Memorial Museum. On October 26, 2019, Public Forum “Museums in the World 2019” was held at the National Museum of Ethnology, in which of all the ten trainees reported on the activities and challenges of their museums in their home countries or regions. Sixty-seven people came to the Public Forum and actively shared their opinions with the trainees.

Since its inception, the program has evolved and its title and operational style has undergone several changes. However, its original aim-to promote international exchange through museums—remains unchanged. As of March 2020, 268 individuals from 61 countries and regions have participated in the program and have contributed to buiding a strong international network of museum specialists and curators.



ICOM Kyoto 2019



Public Forum



Lecture at Minpaku



Study Trip to MieMu



Specialized Program(Preventive Conservation)



Closing Ceremony

Minpaku Fellows

This is a network of international researchers who have worked with or for the Museum in the past, and foreign and domestic research institutions with close ties to the Museum. There are approximately 1,200 members in the Minpaku Fellows program.

Minpaku Fellows Breakdown by Area as of March 31, 2020

Regions	Number of Fellows
Asia, Middle East, Oceania	660
Europe	173
North America, Latin America and the Caribbean	212
Africa	65
Total	1,110

The Museum has been working to build networks to ensure the more systematic and viable use of cultural resources through academic collaboration with museums and universities, both in Japan and overseas. The Museum is also promoting various projects and activities that benefit local communities and international society, in cooperation with many organizations.

Min-pack

In order to contribute to a better understanding of our research, the Museum has developed a learning-kit for children, called Min-pack. It is lent to schools and other educational institutions. Min-pack is a learning kit carried in a suitcase that contains a variety of materials including clothes, musical instruments, and everyday commodities, of the world's countries and regions, with children's learning aids. 28 packs and 17 types are now available.

FY2019 Number of loans : 209 Total number of users : 22,326

- Living in the Extreme North: Anoraks and Duffle Coats from the Inuit in Canada
- Treasure Box of the Andes: The Festivals and Life of the Peruvian Southern Highlands
- Costumes in Java: Religion and Tradition
- Indian Costumes: Saris and Kurtas
- The Arabian Nights
- Islam and Life of the Arab World
- Seoul Style: A Day in the Life of Children in Seoul
- Seoul Children After-school
- Bricolage Art
- Ainu Culture Encounter
- Ainu Culture Encounter 2: Clothing Made from Bark Fiber
- Expedition to the Steppes of Mongolia
- The 2011 Umesao Tadao Exhibition: Tools of Knowledge Production (This uses artifacts from the Special Exhibition “Umesao Tadao” held in 2011.)
- Muslims around the World: Daily Prayers
- Muslims around the World: Contemporary Life
- Ethiopian Coffee Ceremony
- Wearing Ethiopia: the Traditional Clothing of Amhara People



Min-pack  
“Ethiopian Coffee Ceremony”



Min-pack  
“Wearing Ethiopia: the Traditional Clothing of Amhara People”

Workshops

Workshops are organized to introduce the culture of the world through hands-on experiences (crafts) and to share research outcomes of the museum researchers with society.

Date	Workshop	Lecturer
April 6, 2019	“Lets Stamp! Decorations from Oceania”	NIWA Norio
April 13 –14, 2019	Special Exhibition “Toys Expo Children in Modern Japan” Related Workshop “Handmade Toys: Painting on Papier-mâché”	SASAHARA Ryoji TOYONAGA Morito (Ryukyuu papier mâché maker / Representative of Folk Toy Road Works)
April 26-27, 2019	“Look, Touch, and Make Beads from Around the World”	Information Planning Section
July 28, 2019	Summer Workshop for Kids “Take on the Challenge of fieldwork!” Living in Extreme Cold Weather of -40 Degrees Celsius”	OISHI Yuka
August 3, 2019	“Dom Dom! Experience Thai Scent”	OSAWA Yoshimi
August 12, 2019	“Whose Hat? What kind of Hat?”	OISHI Yuka
October 20, 2019 – November 24, 2019	Thematic Exhibition “Arte Popular: Contemporary Expression of Mexican crafts” Related Workshop for parents and children “Mexican Bread-Making: Bread of the Dead”	SUZUKI Motoi Elsa MARTINEZ (Mexican Food Researcher) KOBAYASHI Takanori (Assistant Professor at Kansai Gaidai University)
November 2, 2019	Special Exhibition “REGNUM IMAGINARIUM: Realm of the Marvelous and Uncanny” Related Workshops “Noisy Monsters! Creating Sounds from Images”	YAMANAKA Yuriko WATANABE Ryo (Percussionist)
November 3, 2019	Special Exhibition “REGNUM IMAGINARIUM: Realm of the Marvelous and Uncanny” Related Workshops “Noisy Monsters! Creating Sounds from Images”	YAMANAKA Yuriko WATANABE Ryo (Percussionist)
December 14, 2019	Year-end Workshop “Kagura is Coming to Minpaku Village!: Performance and Story of the Ise Dai Kagura”	KAMINO Chie
January 11-12, 2020	“Pop-up Lion Dance and Picture Coloring: Make, Decorate, and Ward off Evil!”	Information Planning Section
January 19, 2020	“The World of Khanty Pattern: Making a Felt Coaster”	OISHI Yuka



Handmade Toys: Painting on Papier-mâché



Mexican Bread Making: Bread of the Dead



Kagura is Coming to Minpaku Village!: Performance and Story of the Ise Dai Kagura

Worksheets

We have worksheets for a themed tour, for Special or Thematic exhibitions, and for self-learning, depending on visitor's request. Related details can be found on our website. They are downloadable for free use.



Conduct of *Kamuynomi*, and Craftmanship Training for the Ainu Association of Hokkaido

The Museum is carrying out two projects under an agreement with the Ainu Association of Hokkaido, a public interest incorporation. One is an implementation of the *Kamuynomi* rite. *Kamuynomi* is an Ainu word meaning ‘prayer to the deities’.

By implementing the *Kamuynomi* rite, the Museum aims to ensure proper storage of its Ainu collection and handing down of this traditional rite to future generations. In the past, this rite was performed privately by the late Mr. kayano Shigeru acting as the priest. Since FY2007, regional members of the Hokkaido Ainu Association (currently the Ainu Association of Hokkaido) gave public performances of traditional Ainu dance together with the *Kamuynomi* rite. We received cooperation from the Toyoura Ainu Association in FY2019.

Another project is reception of traditional craft engineers dispatched by the Ainu Institute as foreign researchers which will help the Museum to further improve its academic research and collection on Ainu culture, and also promote the cultural development of Ainu people. In FY 2019, the Museum accepted two researchers.



The *Kamuynomi* Rite

Music Day at Minpaku

World Music Day, a festival which began in France to celebrate the summer solstice with a musical performance, was introduced in Japan in 2002. On this day, various musical events are held nationwide. Since 2003 the Museum, in support of the event, has been making space available for concerts to members of the public who enjoy music. On June 23, 2019, 28 groups and individuals gave musical performances using various instruments.



Museum-School Partnership Program

Twice each year, in spring and fall, Minpaku presents “Guidance for Teachers”, an event at which teachers are introduced to tools for use before and after visits to the Museum as part of school trips or other extramural activities. Our aim is to promote greater use of the Museum in education. In FY2019, this program was held only in the spring, with 243 teachers participating from 85 schools. The autumn program was suspended because of the earthquake. The Museum also provided opportunities for a “Work Experience Program” to junior-high school students, and 15 participants from 6 schools were accepted during FY2019.

Volunteer Activities

Minpaku Museum Partners (MMP) is a group of volunteers established in September 2004, to assist the Museum in the planning and implementation of its activities.

MMP is promoting a widely various range of activities in cooperation with the Museum, such as “Main Exhibition Hall guidance for visually-impaired persons” (a program to support them to experience the exhibitions in the hall), “Wakuwaku taiken at Minpaku” (a hands-on tour mainly for elementary school children), and craft workshops for general visitors. MMP also actively involves itself in workshop festivals and volunteer exchange programs outside the museum to deepen the relationship with other museums and facilities.



Main Exhibition Hall Guidance for Visually-Impaired Persons



Wakuwaku taiken at Minpaku



Knowledge Capital Workshop Festival

Minpaku Seminars

On the third Saturday of every month, the Museum’s academic staff and others give lectures in plain language to the general public on the newest research findings.

FY2019 Total Attendance: 2,125 (in the FY2018: 1,990)				<input type="checkbox"/> indicates seminars associated with special exhibitions
				<input type="radio"/> indicates seminars associated with thematic exhibitions
No.	Date	Lecturer	Title	
<input type="checkbox"/> 490	April 20, 2019	KORESAWA Hiroaki OTSUMA WOMEN'S UNIVERSITY SASAHARA Ryoji	What Toy Dolls Tell Us about the Transformation of Views of Children	
491	May 18, 2019	SEKI Yuji	Sustainable Use of Cultural Heritage at the Northern Highlands of Peru, South America	
<input type="radio"/> 492	June 15, 2019	NISHIO Tetsuo NAWATA Hiroshi (Akita University) Endo Hitoshi (Akita University)	Desert Society and Material Culture: A Case Study of Wadi Fatima in 50 years	
493	July 20, 2019	YAGI Yuriko	The Popular Devotion of Black Christ in Andes	
<input type="radio"/> 494	August 17, 2019	SUGASE Akiko KATAKURA Kunio (Motoko Katakura Foundation for Desert Culture) FUJIMOTO Yuko (Motoko Katakura Foundation for Desert Culture)	Revisiting a Bedouin Village in Saudi Arabia through Motoko Katakura Collection	
495	September 21, 2019	SUZUKI Hideaki	Global History of Slave Trade: Sub-Sahara Africa and World	
<input type="checkbox"/> 496	October 19, 2019	YAMANAKA Yuriko	Fantastic Creatures, Sacred Beasts, and UMAs: Why Do Humans Imagine Monsters?	
497	November 16, 2019	SHINMEN Mitsuhiro	Intellectuals and People in Modern Romania: Among Nationalism, Orthodoxy and Socialism	
498	December 21, 2019	ONO Rintaro	Human History in Islands and Ocean-Maritime Archaeology in Southeast Asia and Oceania	
499	January 18, 2020	UDAGAWA Taeko	Food, Community and Culture in Italy	
500	February 15, 2020	YOSHIDA Kenji	The Museum at the Turn of the Civilization: The Past, Present and Future of Minpaku	



No.491 “Sustainable Use of Cultural Heritage at the Northern Highlands of Peru, South America”



No.499 “Food, Community and Culture in Italy”



No.500 “The Museum at the Turn of the Civilization: The Past, Present and Future of Minpaku”

Minpaku Weekend Salon: A Chat with a Researcher

To better understand our research, this event provides an opportunity for the public to talk directly with research institute staff in the Museum's exhibition hall. The Minpaku Weekend Salon was launched in FY2007, as part of the Museum's 30th Anniversary project. Like last year, it was held on Sunday a total of 29 times in FY2019, and the audience totaled 1,287 persons.

Special Lectures and Performances FY2019 Total Attendance: 663

Performing arts of the world’s peoples are staged, with the aim of deepening understanding of cultural anthropology and ethnology among the public.

Noh and the Uncanny

Date	September 29, 2019
Lecturer	YAMANAKA Yuriko
Performers	TATSUMI Manjiro (Noh actor) ISHIGURO Mito (Noh actor) YOSHIDA Kenji
Attendance	638

Son Jarocho:

Mexican Songs Crossing the Border

Date	October 27, 2019
Lecturer	SUZUKI Motoi
Commentator	Ruben Hernandez Leon (UCLA)
Performers	CAMBALACHE
Attendance	384

Workshops Related to Special Lectures and Performances  
Let's Enjoy Son Jarocho

Date	October 26, 2019
Lecturer	SUZUKI Motoi
Commentator	Ruben Hernandez Leon (UCLA)
Performers	CAMBALACHE
Attendance	33



Noh and the Uncanny



Son Jarocho: Mexican Songs Crossing the Border



Minpaku Film Shows

Valuable films on cultural anthropology and ethnology, hardly available in public, are shown with commentary by researcher.

FY2019 Total Attendance: 1,270

New Barrier-free World Developed with Motion Pictures

Date	Lecturer	Title	Attendance
February 11, 2020	HAYASHI Isao ENDOU Kanou (Co-director Producer) KANDA Yoriko (Professor Emeritus at Keiwa College)	KAGURA TROUPE ON THE BEAT	256

Minpaku Visual Ethnography Theater

Date	Lecturer	Title	Attendance
January 11,2020	FUKUOKA Shota, MINAMI Makito	Bhairav Mask Dance	43
January 25,2020	FUKUOKA Shota, MINAMI Makito	Gandharba: Musicians from Nepal	50
February 8,2020	FUKUOKA Shota YONENO Michiyo (Associate Professor at Tokyo University) TERADA Yoshitaka	Music from the Peripheral Regions of the Philippines	39
February 22,2020	FUKUOKA Shota, SASAHARA Ryoji	Folk Performing Arts and Acrobatics	34

Minpaku World Cinema

By selecting appropriate movies for theme “Thought on The Future of Humanity from Films”, the Museum offers a series of film showings accompanied by researcher commentary.

No.	Date	Lecturer	Title	Attendance
45	June 16, 2019	SUZUKI Motoi, SHOJI Hiroshi	Sameblod	305
46	November 9, 2019	YAMANAKA Yuriko	Wonderstruck	255
47	December 22, 2019	TERADA Yoshitaka OKADA Emi (Associate Professor at University of the Ryukyus)	Up Down and Sideways	288

Minpaku Collaborates with Knowledge Capital

Our tie with the Knowledge Capital Association, signed in FY2014, made it possible to hold “Minpaku and Knowledge Capital”, a course of lectures presented at the Osaka Umeda Cafe. In 2019, the first lecture was held at the Knowledge Theater of Grand Front Osaka in the format of an open round-table talk. The second lecture was held at Cafe Lab of Grand Front Osaka using an interview format. The third meeting was an exhibition tour, a form different from that of earlier meetings.

Lecture Series “Minpaku X Knowledge Capital: Into the Realm of the Imaginary”

Total Attendance: 397

No.	Date	Lecturer	Title
1	September 23, 2019	YAMANAKA Yuriko, IGARASHI Daisuke, HASEGAWA Tomohiro, NISHIDA Kiyonori	Round Table “Creature Creator’s Symposium: Human Imagination and Nature”
2	October 8, 2019	YAMANAKA Yuriko, TSUJI Kunihiro	CAFE Lab Talk “Sounds of the Uncanny: Exhibiting the Invisible”
3	October 20, 2019	YAMANAKA Yuriko	Minpaku Special Exhibition Tour Tour of Special Exhibition “REGNUM IMAGINARIUM: Realm of the Marvelous and Uncanny”

Campus Members

This membership program is aimed at providing opportunities to learn about cultural anthropology and ethnology through cooperation between the National Museum of Ethnology and educational institutions such as universities. Member schools receive privileges such as participation in events, including exhibition tours, special lectures and performances, and movies free of charge and discounts at the Museum Shop.

Member schools in 2019

Osaka University, Kyoto University, Kyoto City University of Arts, The Ritumeikan Trust, Tsukamoto Gakuin, Kyoto Bunkyo Gakuen, Doshisya University (Faculty of Global and Regional Studies, Department of Culture and Information Science, Faculty of Culture and Information Science), Senri Kinran University

Related Activities

On November 16–17, 2019, Minpaku hosted the Northern Osaka Museum Messe, a combination of exhibits, workshops, and traditional performance arts provided by museums from the eight cities and three towns comprising northern Osaka. The National Museum of Ethnology and Suita City concluded a “Basic Agreement on Mutual Cooperation” through which both will promote close ties contributing to the development and enrichment of the local community. In addition, Minpaku will use the Suita City “Five-University Lifelong Learning Navi” (<http://www.suita5u.com>) to disseminate information about its activities. From end of March to September, 2019, Minpaku Fair was held at Suita City Information Plaza (Inforest Suita), to promote Minpaku’s activities (visitors totaled 25,947 persons).



Data Collection



History

1935	A plan to establish an ethnological museum of Japan as an incorporated foundation is developed under the leadership of SHIBUSAWA Keizo and SHIRATORI Kurakichi.
1964	The Japanese Society of Ethnology, the Anthropological Society of Nippon, the Japanese Archaeological Association, the Folklore Society of Japan, and the Japanese Association of Ethnology jointly submit to the Minister of Education and other relevant authorities a request to establish a national ethnological research museum.
1972	A research council (chaired by KUWAHARA Takeo) conducts a feasibility study on the establishment of a National Ethnological Research Museum. A basic concept plan for the museum is submitted to the Minister of Education.
1973	A preparatory council for the establishment of a National Ethnological Research Museum (tentative name) and a preparation office are set up.
1974	The National Museum of Ethnology is founded under the “Law to amend part of the National School Establishment Law” (No. 81, 1974), with an Administration Department, an Information and Documentation Center, and five Research Departments. Collecting artifacts from overseas was started in Papua New Guinea.
1975	A collection of folklore reference materials (28,432 items) owned by the former Ministry of Education Archive were transferred from the National Institute of Japanese Literature.
1977	The Museum buildings (28,778m <sup>2</sup> ) are completed and the surrounding area is landscaped. An opening ceremony is held. Exhibitions on Oceania, the Americas, Europe, Africa, West Asia, Music, Language, Southeast Asia, and East Asia (Japanese Culture), as well as the Videotheque are opened to the public.
1978	Long-term and carefully organized “Special Projects” are started as key components of ethnological research.
1979	The fourth Exhibition Hall (1,272m <sup>2</sup> ), which accommodates an additional exhibition on East Asia (Japanese Culture), is completed and opened to the public. Exhibitions on Central and North Asia, and East Asia (Ainu Culture) are opened to the public.
1981	The Auditorium (3,704m <sup>2</sup> ) is completed.
1983	The eighth Exhibition Hall and other facilities (4,816m <sup>2</sup> ) are completed. The exhibition on East Asia (Cultures of the Korean Peninsula and Regional Cultures of China) is opened to the public.
1984	The 10th anniversary of the Museum’s founding is celebrated. “A Ten-Year History of the National Museum of Ethnology” is published.
1987	The 10th anniversary of the Museum’s opening to the public is celebrated.
1989	The School of Cultural and Social Studies (with the Department of Regional Studies and the Department of Comparative Studies) of the Graduate University for Advanced Studies is established within the Museum. The Special Exhibition Hall and the library stacks (5,292m <sup>2</sup> ) are completed. The first special exhibition, “The Great Andes Civilization: Inca, the Reviving Empire of the Sun” is organized to celebrate the completion of the Special Exhibition Hall.
1993	The main Museum building is expanded and a joint research facility (891m <sup>2</sup> ) is completed.
1994	The 20th anniversary of the Museum’s founding is celebrated. The Japan Center for Area Studies is established. (Discontinued in FY2005)
1995	Owing to damage caused by the Hanshin-Awaji Great Earthquake, the entire collection is closed for 45 days. (Earthquake-proof reinforced construction was retrofitted between 2002 and 2003) The Center of Excellence (COE) program is established: “Pioneering Research for the Development of New Ethnological Studies Using Multimedia in the Global Era.” (Concluded at the end of FY1999)
1996	The seventh Exhibition Hall (6,439m <sup>2</sup> ) is completed. Exhibitions on Language and Southeast Asia are renovated. An audio-visual gallery, the Materiatheque, and the exhibition on South Asia are opened to the public.
1997	The 20th anniversary of the Museum’s opening to the public is celebrated.
1998	Following the enactment of the Ministerial Ordinance to revise part of the administrative rules for the Inter-University Research Institute (Ordinance of the Ministry of Education No. 24 of 1998), the five research departments are reorganized into four research departments and one research facility.
1999	The Minpaku “Digital Guide and Study Area” are completed and opened to the public.
2000	A renovated exhibition on the Cultures of the Korean Peninsula is opened. Partial renovation of the Museum exhibitions continued until 2003.
2004	As authorized by the National University Corporation Act (Act No.112,2003), the National Institutes for the Humanities, as part of the Inter-University Research Institute, is established. The former system of 4 research departments and 1 research center is reorganized into a system with 3 research departments and 2 centers. To facilitate joint research, screening by the Joint Research Committee, whose members include representatives from the research community, is established and the scope of the call for joint research applications expanded. Editing of a book entitled A Thirty-Year History of the National Museum of Ethnology is one of the earliest commemorative events started in preparation for the 30th anniversary of the Museum’s founding. (The book is published in March 2006.)
2006	The Minpaku Collections Help Desk opens.
2007	The 30th anniversary of the Museum’s opening to the public is celebrated.
2008	A collaborative agreement is signed with the Japanese Society of Cultural Anthropology.
2009	After renovation, the Africa and West Asia galleries are re-opened to the public.
2010	After renovation, the Music and Language galleries are re-opened to the public. New systems are consolidated including the establishment of the Center for International Academic Exchange.
2011	After renovation, the Oceania and Americas galleries are re-opened to the public.
2012	After renovation, the Europe gallery and Information Zone are re-opened to the public.
2013	After renovation, the East Asia–Culture of Japan gallery is re-opened to the public. Consolidation of new systems, including the Audit Office and Umesao Archives.
2014	After renovation, the East Asia–Culture of the Korean Peninsula, Regional Cultures of China, and Culture of Japan galleries are re-opened to the public.
2015	After renovation, the South Asia and the Southeast Asia galleries are re-opens to the public.
2016	After renovation, the Central and North Asia, and the East Asia–Ainu Culture galleries are re-opened to the public.
2017	Renovation of the Main Exhibitions was completed,anniversary ceremony is celebrated. The former system of 3 research departments and 2 research centers is reorganized into a system with 4 research departments and 1 research center. The 40th anniversary of the Museum’s opening to the public is celebrated. Joint-Use Facilities for Scientific Research is established.
2018	The exhibition hall was closed for 66 days because of damage caused by the Osaka northern district earthquake. The library was closed for 49 days.
2020	The National Museum of Ethnology was closed temporarily due to the novel coronavirus disease (COVID-19) pandemic.

Former Directors-Generalas of October 1, 2020

First Director-General June 1974–March 1993 UMESAO Tadao (deceased) Ethnology, comparative study of civilizations	Second Director-General April 1993–March 1997 SASAKI Komei (deceased) History of agriculture in East and South Asia	Third Director-General April 1997–March 2003 ISHIGE Naomichi Cultural anthropology	Fourth Director-General April 2003–March 2009 MATSUZONO Makio Social anthropology	Fifth Director-General April 2009–March 2017 SUDO Ken’ichi Social anthropology
---	---	---	--	---

Professors Emeriti as of October 1, 2020

1984– SOFUE Takao (deceased) Psychological anthropology	1996– FUJII Tomoaki Ethnomusicology, Anthropology of music	2004– TANABE Shigeharu Social anthropology of Southeast Asia	2014- KOBAYASHI Shigeki Museum Science, Cultural Anthropology
1985– IWATA Keiji (deceased) Cultural anthropology	1996– TOMOEDA Hiroyasu (deceased) Social anthropology	2004– YAMADA Mutsuo (deceased) History of Latin America, Area study of Latin America	2014- TAMURA Katsumi Cultural Anthropology; Southeast Asia, East Asia
1986– KATO Kyuzo (deceased) Ethnic history in North and Central Asia	1997- SASAKI Komei (deceased) History of agriculture in East and South Asia	2005– EGUCHI, Paul K. (deceased) Oral literature and material culture of the Fulfulde-speaking people, Cameroon	2014- YOSHIMOTO Shinobu Textile Arts and Technology; Asia, Africa, America, Europe
1988– ITOH Mikiharu (deceased) Anthropology of religion	1997– SUGIMURA Toh Study of ethno-arts	2005– MATSUBARA Masatake Social structure, Turkey, Eastern Asia, Central Asia	2015- KUBO Masatoshi Ethno-Informatics, Computer Ethnology, Study on Aboriginal Australian Culture
1988– NAKAMURA Shunkichi (deceased) Study of ethnic technologies and tools	1998– WADA Shohei Comparative study of cultures, Anthropology of Africa	2005– OHTSUKA Kazuyoshi Aynu (Ainu) culture, Material culture of North Asian food gatherers, paleoecology, Prehistoric Subsistence, Japan	2015- SHOJI Hiroshi Finno-Ugric Linguistics, Ethnolinguistics, Language Policy; Northern Europe, China
1989– KIMISHIMA Hisako Chinese folklore	2000– SHIMIZU Akitoshi Comparative study of families, Study of Oceania	2006– ISHIMORI Shuzo Cultural development studies, anthropology of tourism, Museum anthropology, Cultural resource management; Micronesia, Polynesia, Southeast Asia, Japan	2015- YASUGI Yoshiho Linguistic Anthropology, Writing Systems, Mayan Civilization, Mesoamerica
1990– WADA Yuiti (deceased) Linguistic anthropology	2001– HATA Nobuyuki Economic anthropology, Anthropology of Africa	2006– NOMURA Masaichi (deceased) Nonverbal communication, Ethnology of Mediterranean Europe	2016- ASAKURA Toshio Social structures in East Asia; Korea, Japan
1991– TARUMI Minoru (deceased) Anthropology in spatial domains	2001– KURODA Etsuko Theory of ethnicity and social culture, anthropology of Central America	2007– OMORI Yasuhiro Ethnology, Visual anthropology	2016- SASAKI Shiro Socioeconomic history of reindeer-breeders and forest hunters; Northern Asia, Siberia
1992– SUGIMOTO Hisatsugu Cultural geography, Cultural anthropology	2001– SAKIYAMA Osamu Linguistic anthropology, Oceanic linguistics	2007– YAMAMOTO Norio Ethnobotany, Ethnology, the Andes, the Himalayas	2016- SUGIMOTO Yoshio Social anthropology; Sri Lanka, South India
1993– KATAKURA Motoko (deceased) Social geography, Ethnology	2002– KOYAMA Shuzo Ethnoarchaeology		2017- SUDO Ken’ichi Social anthropology
1993– OGYU Chikasato (deceased) Cultural structure of Latin America	2002– MORITA Tsuneyuki Conservation science, Ethno-technology		2017- TSUKADA Shigeyuki Ethnohistory; Southern China
1993– UMESAO Tadao (deceased) Ethnology, comparative study of civilizations	2003– ISHIGE Naomichi Cultural anthropology	2009– MATSUZONO Makio Social anthropology	2017- TAKEZAWA Shoichiro African history, History of anthropological thought; West Africa
1994– TAKEMURA Takuji (deceased) Social anthropology	2003– KURITA Yasuyuki Museum anthropology, Study of Bhutan	2010– Matsuyama Toshio Ethnology of contemporary Australian aboriginal society	2017- INTOH Michiko Prehistory of Oceania; Oceania, Island Southeast Asia
1995– CHOU Ta-sheng (deceased) Theory of material culture	2003– SUGITA Shigeharu Computer ethnology, Study of civilization	2011– NAGANO Yasuhiko Historical linguistics, lexical semantics; Tibeto-Burman area	2018- YOKOYAMA Hiroko Cultural anthropology, Chinese society and culture
1995– MATSUZAWA Kazuko Social anthropology	2004– FUKII Tatsuhiko Prehistory of the New World continent	2012- AKIMICHI Tomoya Maritime anthropology, Ecological anthropology; Oceania,Southeast Asia, Japan	2018- TERADA Yoshitaka Ethnomusicology, Study of South India
1996– DAIMARU Hiroshi (deceased) Comparative study of the history of lifestyles, based on clothing, etc.	2004– Kumakura Isao History of Japanese culture	2012- NAKAMAKI Hirochika Japanese religion, Brazilian company culture; Japan	2020- YOSHIMOTO Shinobu Textile Arts and Technology; Asia, Africa, America, Europe
	2004– TACHIKAWA Musashi Philosophy of religion, Buddhist thought		



Note: Visiting Research Fellows and Overseas Visiting Fellows are not included in the numbers given for "Staff" members.

Category	Director-General	Prof.	Assoc. Prof.	Assist. Prof.	Project Prof.	Project Assoc. Prof.	Project Assist. Prof.	Subtotal	Administrative & Technical Staff	Total
Staff	1	23	25	3	1	0	1	54	51	105
Visiting Research Fellows		12	7					19		19
Overseas Visiting Fellows								0		0
Director-General	1							1		1
Audit Office								1(1)		1(1)
Office of Administration								30		30
Office of Information and Documentation								20		20
Research Departments		20	21	1	1	0	1	44		44
Center for Cultural Resource Studies		3	4	2				9		9

Parenthesis ( ) shows the number of staff members holding two posts. The figure for administrative staff includes one project specialists.

Budget

FY2019

Revenue

Category	(millions of yen)
Management Expenses Grants	2,663
Foundation	2,503
Others	160
Revenue	72
Admission fee	56
Others	16
Facilities	25
Grants-in-Aid for Scientific Research	319
TOTAL	3,079

Expense

Category	(millions of yen)
Salaries	1,131
Others	1,629
Education and research	459
Joint use	724
General management costs	421
Facilities	25
Grants-in-Aid for Scientific Research	319
TOTAL	3,079

Note: These figures are from the revised budget. exclude the carry-over to the next fiscal year

FY2020

Category	(millions of yen)
Management Expenses Grants	2,716
Foundation	2,587
Others	129
Revenue	54
Admission fee	29
Others	25
Facilities	99
Grants-in-Aid for Scientific Research	318
TOTAL	3,187

Note: These figures are from the annual budget. include the carry-over from the previous fiscal year

Facilities

The Basic Concept of the Museum Design

The Museum consists of low-rise buildings which naturally blend with the surrounding park environment. In designing the buildings, special emphasis was placed on the aesthetics of traditional Japanese architecture. Each floor of the Museum's main building is composed of several blocks. While the outer walls of these blocks have no openings for natural lighting, plenty of light is let in through the inner courtyards (patios). The patios provide a sense of openness and connection with the outer world, and are also used as open-air exhibition space.

Each floor is designed to be dedicated to a specific purpose, namely, storage on the first floor, exhibitions on the second, and research on the third and fourth. Elevators and staircases provide direct access to these floors. As the route is laid out in a manner that allows for a circular trip, visitors can either go through all the exhibitions, or choose to visit certain exhibitions of interest.

In addition, in order to make the Museum barrier-free and universally accessible, changes such as the installation of Braille labels are ongoing.

Total area of grounds: 40,821 m<sup>2</sup>  
Ground area occupied by the museum buildings: 18,177 m<sup>2</sup>  
**Total floor space: 52,648 m<sup>2</sup>**

**Fourth Floor** 7,207 m<sup>2</sup>  
Offices of research staff members, laboratories, library stacks, and storage area.

**Second Floor** 16,830 m<sup>2</sup>  
Exhibition halls, patio, central patio, multifunctional terminal room, administration offices, Special Exhibition hall and auditorium (seating capacity for 462 persons).

**Main Exhibition Halls** 10,938 m<sup>2</sup>

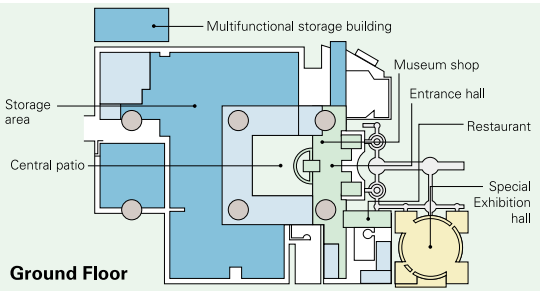
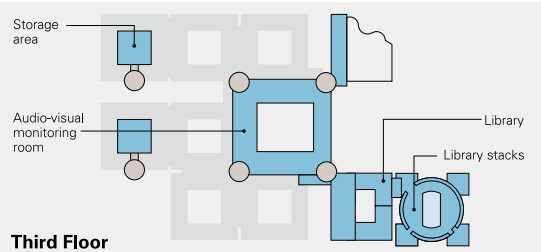
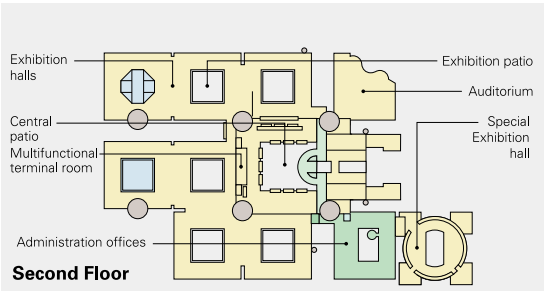
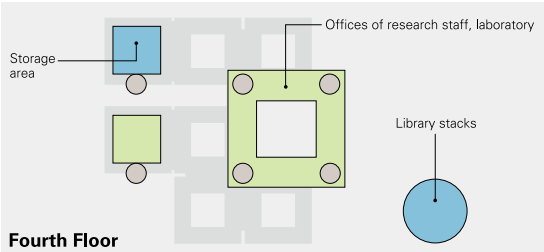
**Third Floor** 7,340 m<sup>2</sup>  
The library, library stacks, audio-visual monitoring room and storage areas.

**Ground Floor** 17,410 m<sup>2</sup>  
Entrance hall, central patio, restaurant, Special Exhibition hall, storage area and museum shop.

**Special Exhibition Halls** **Ground Floor** 851 m<sup>2</sup>  
**Second Floor** 639 m<sup>2</sup>

**Rooftop** 846 m<sup>2</sup>

**Basement** 3,015 m<sup>2</sup>





Cooperative Agreements

Promotion of Research Coordination and Collaboration with Overseas Research Institutes

To promote research collaboration and strengthen cooperation consideration and signing of scholarly cooperation agreements with overseas research institutions is proceeding. In FY 2019, Minpaku signed a cooperative agreement with the institutions: The National Research Centre of Archaeology, Indonesia, in June; Institute of Archaeological Studies named after Yahyo Gulomov, Academy of Sciences of the Republic of Uzbekistan, in September; Bangladesh Agricultural University, National Museums of Kenya, and the Faculty of Forestry, Kasetsart University, in November.

Name of the Institutes	Date of Agreement	Outline of Agreement
The Faculty of Forestry, Kasetsart University (Thailand)	November 22, 2019	Academic research and exchange in joint research, training, publishing, and exhibition projects.
National Museums of Kenya (Kenya)	November 7, 2019	Conducting collaborative research projects including those on museum objects possessed by the Parties; Organizing lectures, symposia and joint exhibitions; Exchange of research information and materials; Promoting cultural and museological exchange programs; and Cooperation in exchange of research staff.
Bangladesh Agricultural University (Bangladesh)	November 3, 2019	Academic research and exchange in joint research, training, publishing, and exhibition projects.
Institute of Archaeological Studies named after Yahyo Gulomov, Academy of Sciences of the Republic of Uzbekistan (Uzbekistan)	September 9, 2019	Cooperation in a variety of research and academic projects; collaborative research in archeology, anthropology, geography, conservation science and other related fields; exchange of visiting scholars, curators and/or other research staff, etc.
The National Research Centre of Archaeology (Indonesia)	June 10, 2019	International joint archaeological research in Indonesia, to reporting programme effectiveness, activities, and research results, etc.
National Museums Board (Zambia)	August 12, 2018	International joint research, exchange of researchers, exchange of museum-related materials and information, etc.
National Museum of Iran (Iran)	November 8, 2017	International joint research, exchange of researchers, exchange of museum-related materials and information, etc.
Taiwan Hakka Cultural Development Center and College of Hakka Studies, National Chiao Tung University (Taiwan)	December 16, 2017	International joint research, exchange of researchers, exchange of museum-related materials and information, etc.
University of British Columbia, Museum of Anthropology (Canada)	March 9, 2017	Academic cooperation and exchange on research projects, exhibitions, database development, etc.
Institute of Anthropology and the Library, Zhejiang University (China)	April 19, 2016	Contribution of references, exchange of human resources, joint research.
Vanderbilt University (USA)	January 15, 2016	Strengthening global collaborative research and organizing international symposia.
National Museum of Taiwan History (Taiwan)	October 16, 2015	Collaborative research and cooperation on exhibition development.
The Museum of Northern Arizona (USA)	July 4, 2014	Strengthening academic exchange and collaborative research.
The Institute of Ethnology and Anthropology, Chinese Academy of Social Sciences (China)	August 28, 2012	Along with other scholarly exchanges, Minpaku participates in research projects and the exchange or shared use of research materials, academic data and publications.
The National Museum of the Philippines (Philippines)	July 18, 2012	International joint research, exchange of researchers, exchange through projects that include joint research training, publication and exhibits.
A:shiwi A:wan Museum and Heritage Center (USA)	June 3, 2012	Scholarly cooperation, development of joint research projects, and exhibits or educational use of museum materials.
Institute of Ecology and Biological Resources (Viet Nam)	March 22, 2012	International joint research, exchange of researchers, exchange through projects that include joint research training, publication and exhibits.
Peter the Great Museum of Anthropology and Ethnology of the Russian Academy of Sciences (Kunstkamera) (Russia)	October 21, 2011	Promotion of interaction and cooperative relationships between the academic and cultural spheres.
The Russian Museum of Ethnography (Russia)	December 3, 2010	Collaboration and cooperation in museology, research methods and cultural asset preservation.
The University of Edinburgh (U.K.)	May 17, 2010	Promotion of academic exchanges and joint research.
Taipei National University of the Arts (Taiwan)	May 15, 2009	Academic exchange, development of research projects, cooperation on museum exhibitions and educational initiatives, exchange of academic information and publications.
Inner Mongolia University (China)	September 22, 2008	Exchange between teaching faculty and researchers, development of research projects, cooperation on museum exhibitions and education, exchange of academic documents and publications.
The National Folk Museum of Korea (Korea)	July 11, 2007	Exchange between teaching faculty and researchers, development of research projects, cooperation on museum exhibitions and education, exchange of academic documents and publications.
Shung Ye Museum of Formosan Aborigines (Taiwan)	July 1, 2006	Collaborative research and cooperation on exhibition development.
The National University of San Marcos (Peru)	June 14, 2005	Joint research projects and academic exchanges in archaeology.

Promotion of Collaboration and Cooperation with Research Organizations in Japan

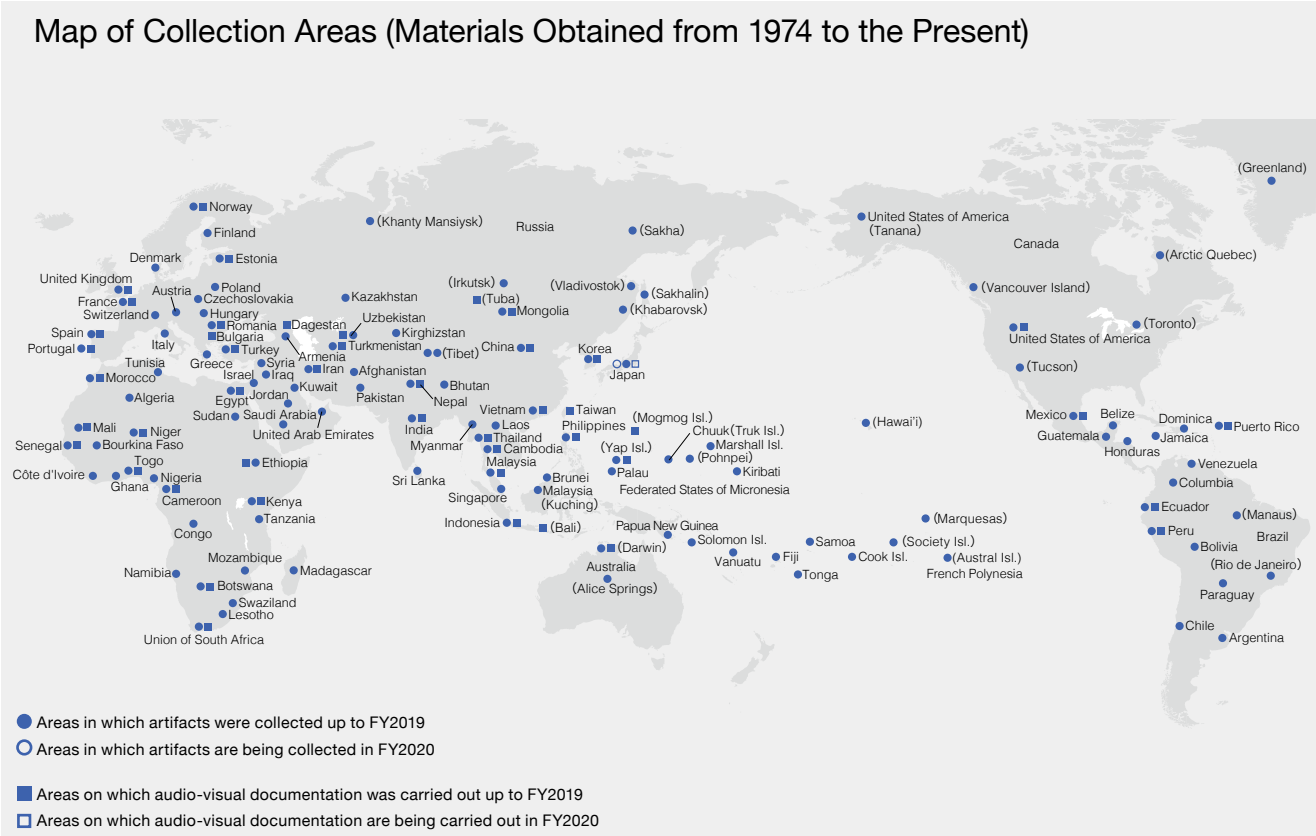
To promote collaboration, cooperation and joint research with universities, research organizations and academic associations in Japan, agreements are concluded following consideration. In August 2019, agreements were concluded with the Osaka Prefectural Government, in November with The Society for Research in Asiatic Music and in March with the Institute for the Study of Japanese Folk Culture, Kanagawa University.

Name of the Institutes	Date of Agreement	Summary of the Agreement
Institute for the Study of Japanese Folk Culture, Kanagawa University	March 26, 2020	Contribution to academic research, education, and social development
The Society for Research in Asiatic Music	November 3, 2019	Contribution to the sustainable development of music culture and the elaboration of research on music culture
Osaka Prefectural Government	August 28, 2019	Contribution to improved partnership in the field of sign language and development and enhancement of both sides
The Japan Society for the Conservation of Cultural Property	November 26, 2018	Contribution to academic research, education, and social development
The Japan Society for the Exhibition Studies	November 19, 2018	Development and extension of science and technology related to preservation of cultural assets
Kyoto University of the Arts	March 19, 2018	Contribution to academic research, education, and social development
Osaka University	March 17, 2018	Contribution to academic research, education, social contribution, and development of other activities
Yamagata University	Februrary 16, 2018	Contribution to academic research, education, and social development
Otsuma Women's University	June 20, 2017	Contribution to academic research, education, and social development
Graduate School of Humanities and Faculty of Letters, Kobe University	July 15, 2016	Academic exchange on research education
Research Institute for Languages and Cultures of Asia and Africa, Tokyo University of Foreign Studies	November 25, 2015	Academic research, collaboration, and cooperation related to language and culture around the world
The Osaka Aquarium Kaiyukan	November 19, 2015	Contribution to society, collaboration, and cooperation through promotion of cooperation between businesses and universities, and advancement of academic research and research outcomes
Osaka Institute of Technology	March 23, 2015	Academic research and collaborative cooperation related to information media digital contents
Ritsumeikan University	April 10, 2014	Academic research and collaborative cooperation related to Food
Kanazawa University	March 23, 2014	Organizational system strengthening based on collaboration and cooperation of both institutions
Japanese Society of Cultural Anthropology	February 27, 2008	Promotion of utilization of research collaboration, research exchange, and mutual research outcomes. Contribution to the development and spread of academic matters in human society



Materials and Databases

The Museum has collected and stored a vast amount of materials and information concerning ethnology and anthropology for researchers inside and outside the country, and has made them available to society through exhibitions and other activities. To carry out these activities efficiently, the Museum has been trying to develop better ways to collect and manage materials, organize and provide information, create database systems and contents, hold exhibitions, and implement various other activities.



The Museum Collection of Artifacts and Other Materials as of March 31, 2020

Artifacts (registered and unregistered)	345,134
From abroad	179,256
From Japan	165,878
Audio-visual Materials	70,874
Moving image	8,223
Sound recordings	62,651

Books and Periodicals	
Books (Including bound magazines)	682,179
Japanese materials	268,282
Foreign language materials	413,897
Journals	17,195
Japanese periodicals	10,144
Periodicals in other languages	7,051

Human Relations Area Files (HRAF)	
Area files (ethnic groups)	385 files
Original texts	7,141 volumes

\* as of May, 2020  
eHRAF World Cultures  
Area files (ethnic groups): 452    Original texts: 6,518    819,045 page  
eHRAF Archaeology (Archaeological document-oriented database of prehistoric age)  
Area files (ethnic groups): 102    Original texts: 2,491    153,383 page

List of Databases as of March 31, 2020

Databases of research resources held in the Museum and outcomes of research projects are made and open to the public. (For each database description, the numerical value(s) in brackets at the end means the number of records contained in it. Databases with an asterisk are for use only inside the Museum.)

Artifacts

**Artifact Catalog**  
Basic information on the artifacts related to economic activities, everyday life, rituals, and manufacturing tools held in the Museum. Data includes objects' names, images, dimensions and weight, place, culture, and the year of acquisition. [286,431]

**Detailed Information on Artifacts in the Catalog**  
Details about the artifacts held in the Museum, such as their local names and translation, images, materials used in their construction, dimensions and weight, when, where and how they are created or used and by whom, and the place and date of collection. [Inside the Museum: 278,397, including 77,259 records open to the public]

**Published References to Artifacts in the Museum**  
Bibliographic information on published references to artifacts held in the Museum. [69,264]

**Korean Daily Commodities Collection**  
Information (including images) on all daily commodities owned and used by a family in Seoul, South Korea. For each item, its location in their apartment, manner of acquisition, and the family's memories about it are recorded. [7,827]

**The George Brown Collection (Japanese and English versions)**  
Basic collection information (including images) for materials collected by George Brown, a missionary and ethnographer who worked in the Pacific Islands from the late 19th century to the early 20th century, and now held in the Museum. [2,992]

**Prints by Indigenous Peoples of Canada \***  
Basic information and description (including images) on our collection of typical prints created by indigenous peoples of Canada, most of which were displayed in our special exhibition *Voices from the Land, Visions of Life: Beauty Created by the Indigenous Peoples of Canada* in 2009. [158]

Audio-Visual Materials

**Visual Materials Catalog**  
Information on our collections of movie films, videotapes and DVDs (photographs excluded). [8,223]

**Videotheque**  
Information on visual contents provided by the *Videotheque* System in the main exhibition hall of the Museum. It is searchable by keywords as well as by the menu of a Videotheque booth. [775]

**Performing Arts Film**  
Information (including videos) on film records of music, dance and theater that the Museum has made at various places in the world since 1982. Videos are available only inside the Museum. [849]

**The Matsuo Minoru Postcard Collection**  
Information (including images) on picture postcards bought by MATSUO Minoru in places visited during his service in the Japanese Navy from 1919–1923. [170]

**Photograph Collection of the Kyoto University Scientific Expeditions**  
Photographs taken by the Kyoto University Scientific Expedition to the Karakoram and Hindukush in 1955, by the Tonga Expedition of Kyoto University in 1960, by the Kyoto University African Scientific Expedition from 1961–1967, and by the Second Kyoto University Europe Scientific Expedition in 1969. [Inside the Museum: 42,195 including 22,361 records open to public]

**The Umesao Tadao Photo Collection \***  
Photographs taken by UMESAO Tadao, the first director general of the National Museum of Ethnology, during his fieldwork at various places in the world. [35,481]

**Photographs on Aboriginal Australian Culture \***  
Photographs of various scenes including ceremonies, daily life and landscapes in Aboriginal Australia from 1980–2004 taken by KOYAMA Shuzo, Professor Emeritus, National Museum of Ethnology. [7,999]

**The Asaeda Toshio Collection \***  
Photographs of people, animals and plants in the Pacific Islands taken by ASaeda Toshio when he visited there in the 1930s as a member of several academic investigation teams. [3,966]

**Photographs of Maritime Peoples of Indian and Western Pacific Ocean: The Ohshima George Collection**  
Photographs taken by OHSHIMA George, during his fieldwork in Asia and Oceania from 1967– 1991. [Inside the Museum: 8,842 including 7,889 records open to the public]

**Photographs of Cameroon, Africa: The Hata Nobuyuki Collection**  
Photographs taken by HATA Nobuyuki, Professor Emeritus, National Museum of Ethnology, during his fieldwork mainly in the Republic of Cameroon from 1969 to early 1990s. [6,530]

**Morihiro OKI's Photographs of India**  
Photographs taken by a photographer OKI Morihiro in various places in India and Nepal from 1977–1996. The database includes photographs focused on rituals, festivals, folk paintings, performing arts, artifacts, and everyday life. [Inside the Museum: 22,120 including 21,971 records open to the public]

**Nepal Photo Database (Japanese and English versions)**  
Photographs taken by TAKAYAMA Ryuzo, a graduate student of Osaka City University at that time, and other members of the Japanese Scientific Expedition for Northwestern Nepal in 1958, and information (including images) on artifacts collected by the expedition and now held in the Museum. [3,879]

**Photographs on Northwestern Nepal and Manaslu \***  
Photographs taken by the Japanese Scientific Expedition for Northwestern Nepal from 1958-1959, partly including ones probably taken by the science team of the first Japanese Alpine Club Manaslu Expedition in 1953. They were part of materials of the former Ministry of Education Historical Archives transferred to the Museum. [620]

**Ethnographic Images of the Spirit Dance in Thailand \***  
Photographs and videos of the Spirit Dance in Thailand shot by TANABE Shigeharu, Professor Emeritus, National Museum of Ethnology. The photographs can be searched and viewed by category, place, and ritual host of the Spirit Dance, and are also related to one of the research reports in Thai made about the dance. [Photographs: 10,082, Research reports: 41]

**Photographs from the Group of the Synthetic Research of Cultures of Southeast Asian Countries \***  
Photographs with related information taken by the research group of the Synthetic Research of Cultures of Southeast Asian Countries during the 1st and 2nd missions out of three missions from 1957–1964. [4,393]

**The World of Swidden Agriculture: Koumei Sasaki's Perspective \***  
Photographs on swidden agriculture in Japan taken by SASAKI Koumei, former director general of the National Museum of Ethnology, during his fieldwork. [454]

**Audio Materials Catalog**  
Information on our collection of records, CDs and audio tapes. [62,651]

**Itemized Information on Audio Records in the Catalog**  
Piece-by-piece information on music, and episode-by-episode information on traditional folktales recorded in our collection of audio materials. [351,802]

Library Materials

**Book and Periodical Catalog**  
Bibliographic and holdings information about the books (including microfilms, etc.) and periodicals held in the Museum Library. [Books: 633,415    Periodical Titles: 17,195]

**Umesao Tadao: Written Works (1934–)**  
Comprehensive catalog of written works from articles and books to endorses on the belly bands since 1934 by UMESAO Tadao, the first director general of the National Museum of Ethnology. [6,911]

Languages

**The Nakanishi Collection: World Literary Materials**  
Information (with images of letter samples) on books, newspapers, manuscripts, and artifacts written in various languages and writing systems collected from all over the world by the late NAKANISHI Akira, former president of Nakanishi Printing Co., Ltd. [2,729]

**The Yoshikawa Database of Materials for a Sumerian Lexicon**  
Digitized notebooks with keywords for Sumerian language studies compiled by YOSHIKAWA Mamoru, Professor Emeritus, Hiroshima University. [Keywords: 33,450 Pages: 40,596]

**Talking Dictionary of Khinina-ang Bontok**  
An electronic dictionary of the Khinina-ang Bontok language spoken in Mountain Province, the Philippines, compiled by Lawrence A. Reid, Researcher Emeritus, University of Hawai'i. It contains image and sound data, as well as information typically found in a printed dictionary. [Headwords: 7,717]

**Japanese Traditional Folktales: The Inada Koji Collection**  
Information (including sound data) on Japanese traditional folktales, documented by INADA Koji at Kyoto Women's University and his group in 29 prefectures of Japan from 1967–1978 (446 tapes, about 190 hour recording). Sounds are available only inside the Museum. [3,696]

**rGyalrongic Languages (in English and Chinese)**  
Database of rGyalrongic Languages, spoken in northwestern Sichuan Province, China, compiled by NAGANO Yasuhiko, Professor Emeritus, National Museum of Ethnology and Dr. Marielle Prins. It contains 425/1200 lexical items and 200 sentences for 83 dialects/languages. It also contains sound data. [Words: 41,078 Sentences: 15,706]

Clothing Culture

**Clothing and Accessory Collection**  
Detailed information and images of clothing materials and accessory artifacts held in the Museum, and field photographs. [31,696]

**Publications Concerning Clothing Culture**  
Index of periodical articles and books that concern the culture of costumes and clothing. This database contains the following items: 1) Japanese periodical articles (current), 2) Japanese periodical articles (before the end of World War II), 3) Foreign language periodical articles, 4) Japanese books, 5) Foreign language ethnographies. [181,770]

**Chronology of Clothing Culture in Japan 1868–1945**  
A digital chronology of clothing culture in Japan from 1868–1945 when western style clothing was not yet common. It consists of information on events, contemporary conditions, illustrations, and memoirs which were collected from newspapers and clothing magazines in that period. [11,905]

**Image Database of Japanese Clothing Culture in the Modern Age**  
Image database on acculturation of clothing culture in Japan from 1868-1945 when Japanese style clothing was as popular as western style one. It includes images found in illustrations of newspaper novels and books, photographs, and posters in that period. [6,741]

Facts, etc.

**Research Reports of Materials Located in Japan \***  
Location information on persons and materials related to folklore and ethnology in Japan, containing 1) artifacts, 2) persons who disseminate traditional technologies, 3) visual materials, and 4) publications. This database was constructed based on the *Research Reports* compiled by researchers appointed by the Museum and published in 1980–2003 by the Museum. [21,373]

**Indigenous Architecture Restored by 3DCG: Wooden Buildings in Insular Southeast Asia**

Information on wooden buildings which has been investigated by SATO Koji, Associate Professor, National Museum of Ethnology, at various places in Southeast Asia since 1981. GIF animations derived from three-dimensional computer graphics takes us around the inside and outside of buildings. [Locations: 36, Buildings: 57]

**Cultural Heritage Recording Memories of Tsunami: Database of Temples, Shrines and Stone Monuments**  
Information (including images and maps) on temples, shrines, stone monuments and tablets conveying memories of tsunam in coastal area of Japan. [440]

**The Heisei Hyakko-Hisho Collection**  
Information about“the Heisei Hyakko-Hisho,”a compilation of samples prepared by the Kanazawa municipal government and Kanazawa College of Art by collecting and organizing samples showing the processes and techniques, product samples, production tools, and materials for crafts from regions across Japan (image included). [553]



Number of Visitors in FY2019

Annual Number of Visitors

Total number of visitors	292,315	Adults	190,387
Daily average	1,015	Students	93,761
Total number of visitors since the establishment of the Museum	11,480,119	primary, junior highschool, high school, college and university	
		Children	8,167
		below primary School	
<b>Special Exhibition</b>			
“Toys Expo Children in Modern Japan” March 21 - May 28, 2019			37,377
“REGNUM IMAGINARIUM: Realm of the Marvelous and Uncanny” August 29 - November 26, 2019			78,682
<b>Thematic Exhibitions</b>			
“Traveling Music: The String Instruments of South Asia” February 21 - May 7, 2019			41,400
“Exploring 50 years of Livelihood and Landscape Change in Wadi Fatima, Saudi Arabia : Ethnographic Collections of Motoko Katakura, a Japanese Female Cultural Anthropologist” June 6 -September 10, 2019			34,180
“Arte Popular: Contemporary Expression of Mexican Crafts” October 10 - December 24, 2019			52,336
<b>Collection Exhibitions</b>			
“Collection Exhibition: Toshio Asaeda and his Galápagos: Expeditions and Exhibitions of Natural History in the 1930s” January 16 - February 27, 2020			9,289
<b>Traveling Exhibitions</b>			
Special Exhibition Co-organazed by National Museum of Ethnology, and National Museum of Nature and Science			201,120
“Beads in the World: Connecting people with Nature” April 9 – June 16, 2019 National Museum of Nature and Science			
“Exploring 50 years of Livelihood and Landscape Change in Wadi Fatima, Saudi Arabia : Ethnographic Collections of Motoko Katakura, a Japanese Female Cultural Anthropologist” October 5 – December 22, 2019 Yokohama Museum of Eurasian Cultures			10,380
“Toys Expo: Children in Modern Japan” October 12 – November 24, 2019 Saitama Prefectural Museum of History and Folklore			8,285
“Handmade Dresses of the World: The National Museum of Ethnology Collection” November 13 – 25, 2019 Hankyu Umeda Main Store			11,802

Special Exhibitions

Exhibition Title	Period	Exhibition Title	Period
The Great Andes Civilization: Inca, the Reviving Empire of the Sun	Sept. 14–Dec. 12, 1989	The Arabian Nights	Sept. 9–Dec. 7, 2004
Masks in Equatorial Africa: Hidden Forest Spirits*	Mar. 15–May 31, 1990	More Happy Every Day: The World of Bricolage Art	Mar. 17–June 7, 2005
The E.S. Morse Collection: Meiji Folk Crafts that Crossed the Pacific	Sept. 13–Dec. 4, 1990	Fashioning India	Sept. 8–Dec. 6, 2005
Engelbert Kämpfer: The Genroku Period Viewed by a German*	Feb. 7–Apr. 16, 1991	Minpaku Kids-World: Objects as Ties between Children and Their Society	Mar. 16–May 30, 2006
Greater India: Deities and Man in the Hindu World	Aug. 1–Nov.5, 1991	Arabesque of Batik Designs and Techniwues: From Java to the World	Sept. 7–Dec. 5, 2006
Daghestan, Crossroads of Civilization: Ethnic Arts of the Caucasus*	Mar. 12–May 19, 1992	Pilgrimage and Sacred Places: A Voyage of Self Discovery	Mar. 15–June 5, 2007
Aboriginal Australia: Fifty Thousand Years of Hunters and Spirits	Sept. 10–Dec. 8, 1992	The Great Ocean Voyage: VAKA MOANA and Island Life Today	Sept. 13–Dec. 11, 2007
Asia Viewed by Torii Ryuzo, a Pioneer of Ethnology*	Mar. 11–May 14, 1993	The Profound Earth: Ethnic Life and Crafts of China	Mar. 13–June 3, 2008
Ainu Moshiri: The Ainu World Viewed through Their Designs	June 10–Aug. 17, 1993	SELF and OTHER: Portraits from Asia and Europe	Sept. 11–Nov.25, 2008
Javanese Cotton Print: A World of Diverse Traditions	Sept. 9–Nov. 30, 1993	When Japan's Tea Ceremony Artisans Meet Minpaku's Collections: Creative Art in Perspective	Mar. 12–June 14, 2009
Indigenous Peoples and Cultures in Taiwan*	Mar. 10–May 24, 1994	Voices from the Land, Visions of Life: Beauty Created by the Indigenous Peoples of Canada	Sept. 10–Dec. 8, 2009
Woven Flowers of the Silk Road: An Introduction to the Carpet Heritage of West Asia and Central Asia	Sept. 8–Nov.29, 1994	Africa in the Works of El AnatsuiA Fateful Journey	Sept. 16–Dec. 7, 2010
Music and Musical Instruments in Latin America*	Mar. 16–May 30, 1995	Umesao Tadao: An Explorer For the Future	Mar. 10–June 14, 2011
Weaving Color as Culture: The Maya Today	Sept. 14–Nov. 30, 1995	Devotion to the Arts of Living Daily Life Among the Aynu of the Kurile, Sakhalin and Hokkaido Islands: Objects from the Late 19th - Early 20th Century Collections of Ethnological Museums in Germany and Japan	Oct. 6–Dec. 6, 2011
Japan through the Eyes of Siebold and His Son	Aug. 1–Nov. 19, 1996	“Modernologio” Now: Kon Wajiro's Science of the Present	Apr. 26–June 19, 2012
Images of Other Cultures: From the British Museum Collection	Sept. 25, 1997–Jan. 27, 1998	The Warp and Weft of Weaving: Handlooms and Textiles of the World	Sept. 13–Nov. 27, 2012
What is Inside? Forays and X-rays into Ethnographic Objects*	Mar. 12–May 26, 1998	Zafimaniry Style: Life and Handicrafts in the Mist Forest of Madagascar	Mar. 14–June 11, 2013
Mongolia: The Rise of Nomadic Culture	July 30–Nov. 24, 1998	Shibusawa Keizo Memorial Project Attic Museum	Sept. 19–Dec. 3, 2013
Cultural Heritage of the South Pacific: The George Brown Collection*	Mar. 11–May 31, 1999	The Power of Images: The National Museum of Ethnology Collection	Sept. 11–Dec. 9, 2014
Ethnic Cultures Abroad: People Moving, Cultures Mixing	Sept. 9, 1999–Jan. 11, 2000	Food Culture in Korea and Japan: The Tastes of NANUM and OMOTENASHI	Aug.27– Nov.10,2015
Theater at the Museum: The Expressive Body	Mar. 18–May 14, 2000	Ishuretsuzo, the Image of Ezo: Tracing Persons, Things and the World	Feb.25– May.10,2016
Ethnology and the Rise of Cinema: From Shadow Theater to Multi-Media	July 20–Nov. 21, 2000	Amazing show tents in Japan	Sep.8–Nov. 29, 2016
Ethnology of Life in the Taisho and Showa Periods: Shibusawa Keizo and the Attic Museum	Mar. 15–June 5, 2001	Beads in the World	Mar. 9–June 6, 2017
The Sea Otter and Glass Beads: Trade of Indigenous Peoples of the North Pacific Rim	Sept. 20, 2001–Jan. 15, 2002	Revisiting Siebold's Japan Museum	Aug. 10–Oct. 10, 2017
Seoul Style 2002: Life as It Is with the Lee Family	Mar. 21–July 16, 2002	A ‘Tower of the Sun’ Collection: Expo ‘70 Ethnological Mission	Mar. 8–May 29, 2018
Wrapping Culture: Furoshiki and Wrapping Cloths of the World	Oct. 3, 2002–Jan. 14, 2003	Transmitting Art and Craft: Japanese Industrial Design Originating in Tohoku	Sep. 13 - Nov. 27, 2018
Mandala Deities in Tibet and Nepal	Mar. 13–June 17, 2003	Toys Expo: Children in Modern Japan	Mar. 21 - May 28, 2019
A West African Story-telling Village	July 24–Nov. 25, 2003	REGNUM IMAGINARIUM: Realm of the Marvelous and Uncanny	Aug. 29 - Nov. 26, 2019
Messages from the Ainu: Craft and Spirit	Jan. 8–Feb. 15, 2004		
Multiethnic Japan: The Life and History of Immigrants	Mar. 25–June 15, 2004		

\*The distinction between a special exhibition and a thematic exhibition was abolished in 2001 and now all of the temporary exhibitions are called “Special Exhibitions”.

Internet

Website <https://www.minpaku.ac.jp/>

The home page features Minpaku research, exhibits, and other activities, along with information on graduate education, publication, and materials in its library and collections.

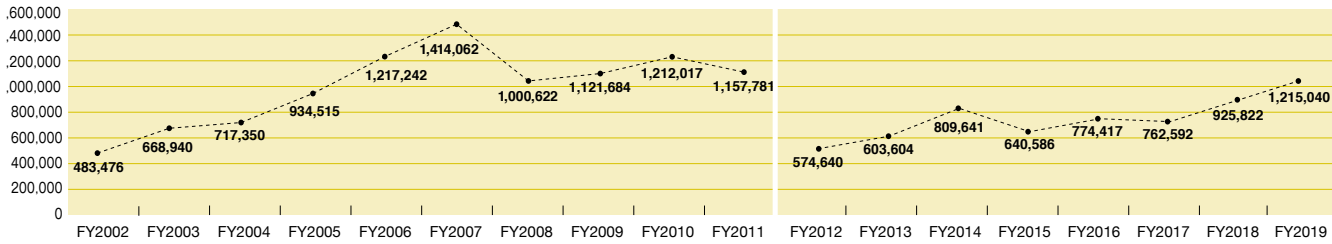
E-mail magazine <https://www.minpaku.ac.jp/museum/enews>

To provide updates on the latest research, special or thematic exhibitions and various events, like Minpaku Seminars, “Minpaku e-news”, a monthly newsletter is emailed to subscribers.

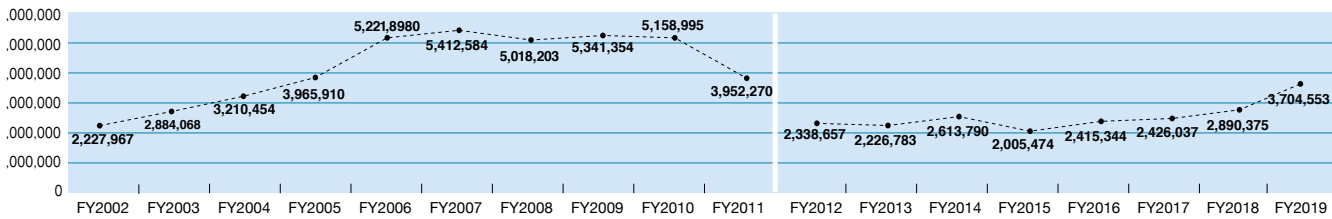
Social Media Facebook <https://www.facebook.com/MINPAKU.official>  
Twitter <https://twitter.com/MINPAKUofficial>  
YouTube <https://www.youtube.com/MINPAKUofficial>  
Instagram <https://www.instagram.com/MINPAKUofficial>

Using various social media provides opportunities to link Minpaku with people interested in cultural anthropology and ethnology, and also to give information on research and museum activities.

Number of Visitors to the Minpaku Website 1,215,040 (FY2019)



Number of Web Pages Accessed 3,704,553 (FY2019)



\*Counting procedures changed starting in 2012.  
\*The figures for December 19, 2018 to January 11, 2019 are not included in the total.

Publicity through the Public Media

Publicity is developed through the mass media to convey information about Minpaku's activities. A program entitled “Window of Research” was launched through the “Meeting for Media and Minpaku Staff”, held monthly on every third Thursday. The Museum has been mentioned in a total of 1,314 programs and articles: 63 on TV, 60 on radio, 583 in newspapers, 129 in major magazines, 123 in minor magazines and 356 in other media. Minpaku has also been featured in regular radio broadcasts and newspaper series.

“*Tabi, Iroiro Chikyujin* [Journeys: Various People on the Earth]”  
Published every Saturday since April 2009 in the evening edition of the Mainichi Shinbun newspaper.  
Published from April 2005 to March 2009 as a series entitled “The Study of Other Cultures”.

“Deep Minpaku-tankentai (comments about collections from the essayist)”  
Published every Thursday since December 2019 in the Shukan Shincho.

Materials for the General Public

Publicity

MINPAKU Anthropology Newsletter  
*Gekkan Minpaku* [Minpaku Monthly]  
Minpaku Calender

Guidebooks and Catalogs

Special Exhibition catalogue “*Toys Expo: Children in Modern Japan*”  
Special Exhibition catalogue“*REGNUM IMAGINARIUM: Realm of the Marvelous and Uncanny*”

Meeting with the Press

A program entitled “Window of Research” was launched through the “Meeting for Media and Minpaku Staff”, held monthly on every third Thursday to convey information about Minpaku's activities.







NIHU carries out research on the human sciences and aims to create new value systems that will genuinely enrich our lives.

NIHU is one of the four inter-university research institute corporations in Japan. It consists of six inter-university research institutes that specialize in humanities research. Each of the institutes is deeply involved in foundational research in their field as both a domestic and international research center. The six institutes interact in a complementary fashion and carry out research that transcends the frameworks of traditional disciplines. They also cooperate with other research organizations domestically and internationally in their attempt to identify and solve modern day issues.

## Research and Communications

In 2016, two new centers, the Center for Transdisciplinary Innovation (CTI) and the Center for Information and Public Relations (CIP) were established to improve governance at NIHU.

The two Centers promote international collaborative research by building a research network around the six institutes. At the same time, the Centers communicate their research globally and are committed to developing next generation scholars.

### Center for Transdisciplinary Innovation (CTI)

CTI strengthens mutual cooperation between the six institutes and leads NIHU's Transdisciplinary Projects that collaborate with universities and research institutions in Japan and overseas.

## NIHU Transdisciplinary Projects

### Institute-based Projects

REKIHAKU: Constructing Integrated Studies of Cultural and Research Resources, and Renovating Sharing Infrastructures of Research Resources in Japanese History and Cultures

NIJL: Project to Build an International Collaborative Research Network for Pre-modern Japanese Texts

NINJAL: A New Integration of Japanese Language Studies based on Diverse Language Resources

NICHIBUNKEN: Historical and International Research into Popular Culture to Pursue New Images of Japan

RIHN: Transformation towards Sustainable Futures in Complex Human-Nature Systems in Asia

MINPAKU: Info-Forum Museum for Cultural Resources of the World

### Multidisciplinary Collaborative Projects

Change of Local Communities and Reconstruction of Community Cultures after Disasters in Japanese Archipelago

Rethinking Eco-health in Asia

Development of a Field of Comprehensive Bibliographical Studies from an Interdisciplinary Perspective

### Network-based Projects

NIHU Area Studies  
Northeast Asia Modern Middle East South Asia

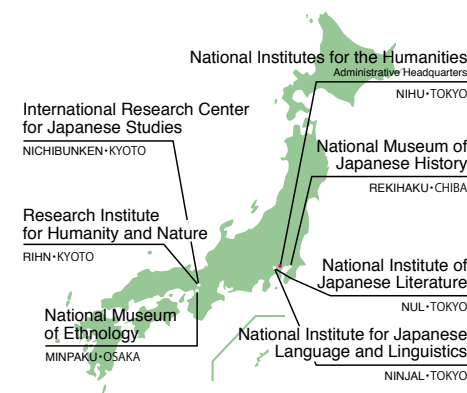
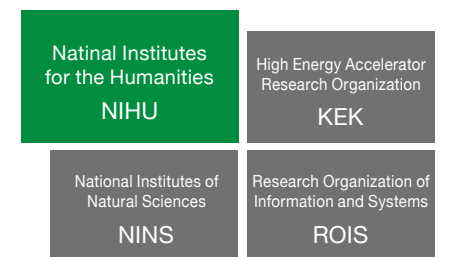
Japan-related Documents and Artifacts Held Overseas: NIHU International Collaborative Research and Utilization

Insights into Japan-related Overseas Artifacts and Documents of the 19th Century Europe, Research and Use: Developing the Foundation for International Collaboration in Transmitting Japanese Culture

Research, Conservation and Utilization of the Marega Collection Preserved in the Vatican Library

A Survey, Study and Use of the Japan-related Documents and Artifacts in North America: Socio-historical Approach to 'Modern Overseas Material Informatics'  
Coordination between Projects to Make Effective Use of Research Results

Four inter-university research institute corporations, and six inter-university research institutes specializing in humanities.



### Center for Information and Public Relations (CIP)

CIP consolidates data related to human cultures by gathering information and research results from researchers affiliated with NIHU, and important documents and materials from the archives of the six institutes. The materials are made available to the public.

### Advanced Collaboration Systems

nihuINT <https://int.nihu.jp/?lang=en&>

Comprehensive search engine for databases operated by the six NIHU institutes as well as other organizations.

### Research Resource Databases and Publications

NIHU Repository  
Cloud-based NIHU repository giving users comprehensive access to research papers from the six NIHU institutes.

Researcher's Profile <https://nrd.nihu.jp/search?m=home&l=en>  
Comprehensive database containing information on researchers throughout NIHU.

Portal site for Japanese Studies [https://www.nihu.jp/japan\\_links/index.html](https://www.nihu.jp/japan_links/index.html)  
English Resource Guide for Japanese Studies and Humanities in Japan.

NIHU Magazine [https://www.nihu.jp/en/publication/nihu\\_magazine](https://www.nihu.jp/en/publication/nihu_magazine)  
A bilingual (Japanese and English-language) publication that covers topics such as the latest research trends, results and activities at NIHU.

### NIHU Symposiums

NIHU organizes symposiums for the general public in order to share the comprehensive human culture related research resources and results it has accumulated.

36th: "Exhibiting Japan Abroad: Exploring the Significance of the 'KIZUNA: Japan | Wales | Design Exhibition,'" Oct, 2019

37th: "Boundaries of the 'natural' and 'supernatural'" Nov, 2019

38th: "Worlds of History Opened Up by Computers: Considering the Digital Humanities," Jan, 2020

### Industry-Academia Collaborations

NIHU collaborates with industry and other partners to give back its fruits of research to society.

Joint symposium with Ajinomoto Foundation for Dietary Culture  
Joint lecture with Otemachi Academia

## Inter-University Research Institute Network Project to Preserve and Succeed Historical and Cultural Resources

We promote document survey and data recording, the establishment of a wide support system, historical and cultural materials conservation projects that preserve materials and study preservation methodologies. Furthermore, we aim to inherit and build historical cultures within local communities by making use of materials, developing educational programs, and disseminating information in Japan and overseas. This program is run by NIHU (lead organization, Rekihaku), Tohoku University, Kobe University at the core, and in cooperation with "Shiryo Net," a university based research activity to preserve old historical documents.

## NIHU Interactive Communication Initiative

We aim to pioneer a "visualization and advancement cycle of cutting-edge research at museums and exhibits"; which is about visualizing state-of-the-art research on human culture in museum contexts and exhibits and promoting research through the cooperation of multiple fields, academia and society. This program is run by NIHU's six institutes in collaboration with universities and research institutions across Japan.

## Liberal Arts Communicator Training Program

In the 2017 academic year, we have started a training program for humanities researchers that fosters their skills to communicate humanities research to a lay audience and become specialists that will be able to incorporate and address societal needs in their research. Our liberal arts communicators will utilize various resources and outlets to bridge between academia and society. Through this program we hope to develop talented researchers who will contribute to the advancement of humanities, foster industry-academia relations and raise the visibility of our research activities.

## Industry-Academia Collaborations

We collaborate with industry and other partners to give back the fruits of research to society. In the 2019 academic year, we jointly organized lectures with YOMIURI ONLINE and CHUOKORON-SHINSHA Inc.

## Graduate School Education

NIHU's four humanities research institutes offer courses at the Graduate University for Advanced Studies (Sokendai). The five graduate (doctoral) courses are designed to take advantage of the institutes' resources and provide an array of specialized training for researchers.

## Courses offered at Sokendai

- Department of Regional Studies (National Museum of Ethnology)
- Department of Comparative Studies (National Museum of Ethnology)
- Department of Japanese Studies (International Research Center for Japanese Studies)
- Department of Japanese History (National Museum of Japanese History)
- Department of Japanese Literature (National Institute of Japanese Literature)



A portable, mobile exhibit at The National Museum of Emerging Science and Innovation in 2019.



Liberal Arts Communicator Training Program



Otemachi Academia lecture series at the Tokyo headquarters of Yomiuri Shimbin (Photo: Otemachi Academia ).





The National Institutes for the Humanities (NIHU) have coordinated with Japanese and overseas universities, research institutes and communities to manage Transdisciplinary Projects to contribute to resolving the contemporary challenges for six years from the fiscal year 2016.Minpaku is in charge of the following projects:

Multidisciplinary Collaborative Projects:  
Change of Local Communities and Reconstruction of Community Cultures after Disasters in Japanese Archipelago

Minpaku Unit “Rediscovering Local Cultures and Constructing a System of Representation in the Japanese Archipelago”

Representative: HIDAKA Shingo

The Japanese Archipelago is long from North to South, with residential areas spread over seashore areas, plains, and mountainous areas. This topology has nurtured diverse local cultures, each adapted to its own natural environment. These local cultures have lost some of their unique characteristics in social transformations due to globalization. This has given rise to an impression cultural standardization across all of Japanese society, at least on the surface. In addition, rebuilding after many recent large-scale natural disasters forced communities to relocate, merge, or otherwise reorganize themselves, reconstructing their local cultures that had been passed down across generations. In this research, we focus on local cultures and identify what cultures are passed down and new cultures being constructed. We discuss how studies of human cultures can contribute contribution to the society now and into the future. More specifically, we are pursuing three research themes namely, “Rediscovery of Local Cultures,” “Conservation of Local Cultures,” and “Utilization of Local Cultures.” Our aim is to rediscover local cultures that are buried under the surface at ordinary times, and to build a system that represents local cultures in a way that is meaningful for community residents and the external society.

Multidisciplinary Collaborative Projects,  
New Developments in Ecohealth Research in Asia,

Minpaku Unit “The Constellation of Food and Foodways in Human and Natural History”

Representative: NOBAYASHI Atsushi

The purposes of our project are to research the social function and the history of food and foodways of humans, and to study the principles of coexistence and conflict concerning food among them. We recognize the concept of food and foodways as being a cultural system in human and natural history. Food is indispensable to the maintenance of life, and foodways is embedded deeply in culture and economy. Knowing the mass production and disposal of food, world population growth and the increasing numbers of those existing at starvation levels, we can see that food and foodways in modern society is far from being ecologically adaptive. Food issues will be connected in a multidisciplinary human ecological perspective that examines the function of food, and natural history, which examines the role of food in human societies. It will develop a model of food and foodways in the human future. This work is a part of the “New Developments in Ecohealth Research in Asia” project, promoted and led by the Research Institute for Humanity and Nature. “Ecohealth” is a new approach to the concept of “health”, which has been analyzed previously from a medical perspective. We shed a new light on the relationships among livelihood, living environment, and occupations, dietary habits in the modern era of rapid social transformation, and environmental change.

Network-based Projects: Northeast Asia  
Regional Structure and Its Change in Northeast Asia: in Search of the Way to Coexist from the Point of View of Transborderism

Central hub for the study project covering  
“The Structure of Natural Environment and Cultures / Civilizations”

Representative: IKEYA Kazunobu

The Center for Northeast Asian Area Studies at the National Museum of Ethnology (Minpaku) consists mainly of the researchers working in cultural anthropology, ethnology and adjacent domains within Minpaku, and archaeological researchers of its partner institution, National Museum of Japanese History. The Project focuses on the movement of people and exchange of materials, introduce and influence of the political and economic systems in Northeast Asia, and to clarify the structures and transformations of the natural environment, cultures, and civilizations from prehistory to the present. Northeast Asia for the purpose of the Project refers to the vast area covering Siberia and Far East Region of Russia, Mongolia, Korean Peninsula, China, and Japan. Up until now, researches have been done within the framework of each nations, but this project is a novel attempt to comprehend the region as a whole. As central hub, the Center promotes the Project in partnership with other organizations, namely, Slavic-Eurasian Research Center/ Hokkaido University, Center for Northeast Asian Studies/ Tohoku University, Center for Far Eastern Studies / University of Toyama, Institute for North East Asian Research/ The University of Shimane, and Waseda Institute of Contemporary Chinese Studies/ Comprehensive Research Organization of Waseda University.

Network-based Projects: Modern Middle East  
Towards a Pluralistic and Multi-Valued Society: People and Cultures of the Middle East in the Age of Global Change

Central hub for the study project covering  
“The Transformation of Cultural Resources and the Reconfiguration of the Personal Sphere in the Modern Middle East”

Representative: NISHIO Tetsuo

The Area Studies Project for the Modern Middle East aims to develop new methodologies for Middle East Studies that would allow us to conceptualize the ways in which individuals related to the world. In the age of the global transformation of nature, society, and media, how do the individuals of the Middle East obtain information, accumulate knowledge as well as utilizing them as resources? We strive to examine the resocialization of individuals in relation to the ways in which they create their social spaces through inclusion and exclusion of multiple values. Our center was established in April 2016 as a central hub to coordinate the project and investigates on the topic of “The Transformation of Cultural Resources and the Reconfiguration of the Personal Sphere in the Modern Middle East.” Personal encounters with unknown people, places, and information play an important role in shaping the life-worlds of those who live in the Middle East. We try to clarify the attributes of this personal sphere: 1) where does the boundary between the personal and the public lie? 2) how do personal spheres connect to form communities or world views? 3) in what ways do cultural resources reflect the reconfiguration of the personal sphere? In the course of this 6-year project, we will send research missions, host foreign researchers, conduct international symposia, develop learning kits, plan exhibitions, and publish our results in collaboration with our partner institutions.

Network-based Projects: South Asia  
Structural Transformation in Globalizing South Asia – Integrated Area Studies for Sustainable, Inclusive and Peaceful Development

Secondary hub: Research Topic “South Asian Cultures and Societies”

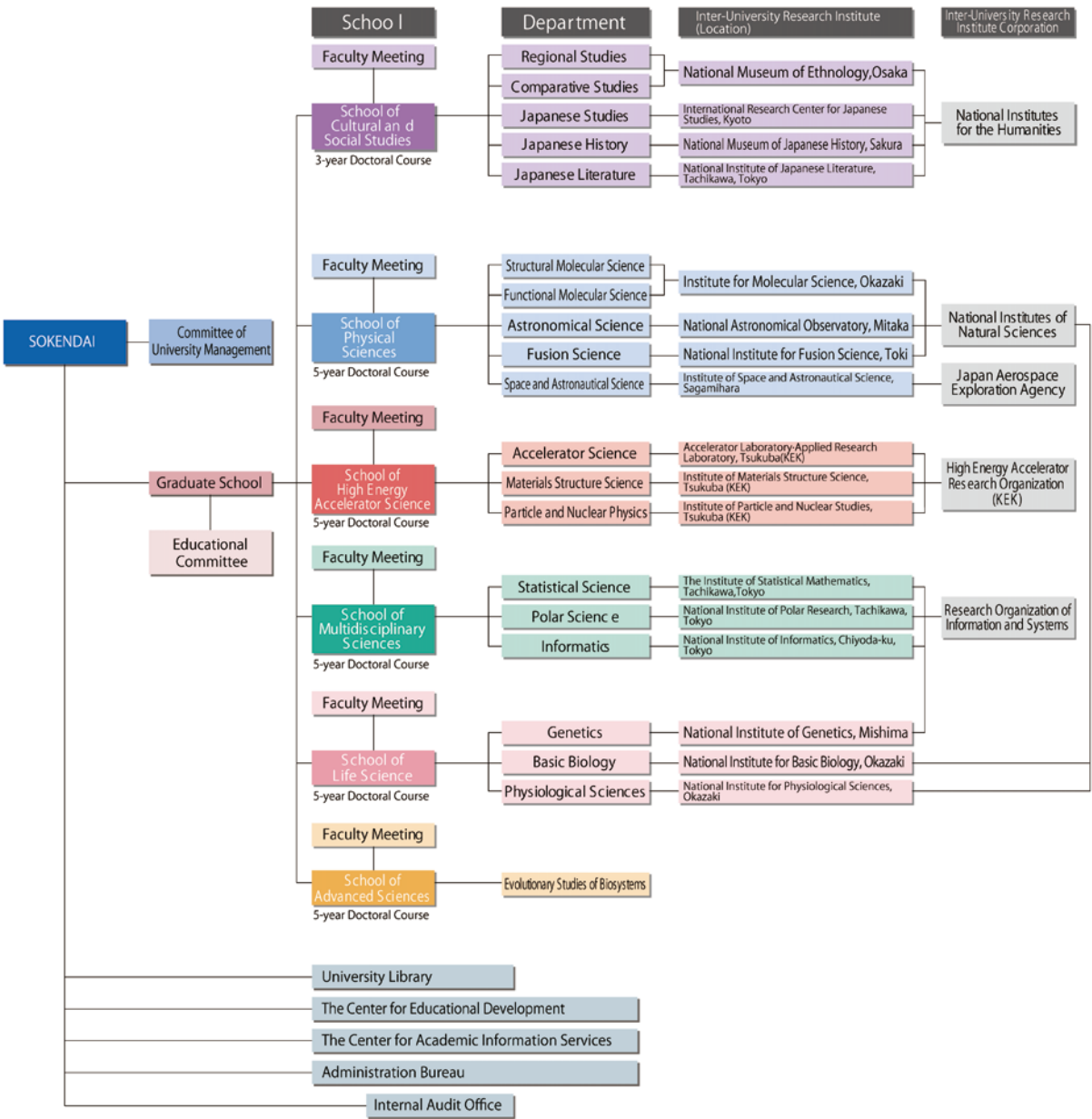
Director : MIO Minoru

The South Asian region is currently undergoing significant transformation due to rapid economic development, which aggravates a range of existing socio-cultural, economic, and political problems while also giving rise to new ones. International tensions within the region and beyond are also increasing. In the context of accelerated globalization, Japan cannot ignore such tensions. This project aims to encourage solution-oriented approaches to the real world problems through the network of research centers at Kyoto University, National Museum of Ethnology, University of Tokyo, Hiroshima University, Tokyo University of Foreign Studies, and Ryukoku University. The center at the National Museum of Ethnology functions as the secondary hub, especially advancing the international activities of this project. We are also attempting to delineate characteristically South Asian forms of social resilience by understanding the dynamics of the global circulation of people, cultures, and values, as well as by analyzing the particular characteristics of South Asian social relationships that have been maintained amidst rapid social change. Through this research, we intend to contribute to the academic and social discourse on the social risks resulting from meteoric globalization.



The Graduate University for Advanced Studies, SOKENDAI is a national university offering a graduate program only. By taking advantage of the close network among the 18 Inter-University Research Institutes and the joint research opportunities thus afforded, and by promoting interaction among different schools and departments within SOKENDAI and also among universities and graduate schools both domestic and overseas, SOKENDAI aims to develop researchers with the ability to think from broad, comprehensive, and global perspectives.

University Organization



The Graduate University for Advanced Studies

Our museum accommodates the School of Cultural and Social Studies (with the Department of Regional Studies and the Department of Comparative Studies) of The Graduate University for Advanced Studies, SOKENDAI. Both of these departments conduct educational and research activities taking advantage of the human resources and advanced research environment of the Inter-University Research Institutes, which are playing a leading role in promoting joint research projects around Japan.

Purpose of the Departments of Regional Studies and Comparative Studies

Educational studies are composed of lectures and instruction by individual faculty members and shared seminars by multiple faculty members. Two types of shared seminars are offered: the basic seminar called the “Freshman Seminar” which is mainly for freshmen and the “Thesis Seminar” for sophomores and more advanced students focusing on instruction for thesis writing. Common subjects (advanced theory) on cultural anthropology and ethnology are also conducted primarily for first year students.

Under student exchange agreements, credits for these courses can be transferred among the Graduate School of Asian and African Area Studies at Kyoto University, the Graduate School of Human Sciences at Osaka University, the Graduate School of Intercultural Studies and the Graduate School of Human Development and Environment at Kobe University.

In most cases, students work on preparation for fieldwork during the first year, and proceed to fieldwork in the second or subsequent years under the supervision of their advisors. Then, after finishing their fieldwork, the students complete their dissertations under the individual guidance of their advisors and through participation in the “Thesis Seminar”. The purposes of educational studies in both departments are as follows:

- (i) Original research on cultural anthropology and ethnology
- (ii) Writing a thesis based on data from long-term fieldwork
- (iii) Training researchers with broad horizons and a deep sense of humanity

Number of Students as of April 1, 2020

Quota and Current Number of Students

Department	Quota	Current Students			Total
		First year	Second year	Third year	
Regional Studies	3	3	2	12	17
Comparative Studies	3	2	3	10	15
Total	6	5	5	22	32

Number of Doctoral Degrees Awarded

Academic Year	Regional Studies		Comparative Studies		Total
	By Completing Doctoral Course	By Submitting Dissertation	By Completing Doctoral Course	By Submitting Dissertation	
1991			1		1
1992					
1993			1	1	2
1994	2		1		3
1995	2		1		3
1996		3			3
1997	3		4		7
1998	4	2			6
1999					
2000	2		2	1	5
2001	1	1	2	1	5
2002	1	1		2	4
2003					
2004	2	3			5
2005	4	2		2	8
2006	2		3		5
2007	2	1	3		6
2008	1		1		2
2009		1	1	1	3
2010	2		2	3	7
2011	3		1	1	5
2012	1	1	1	1	4
2013			1	1	2
2014	2	1	2		5
2015	3	1			4
2016	1	1	1		3
2017	1		1		2
2018	1				1
2019	1		2		3
Total	41	18	31	14	104

Acceptance of Overseas Researchers under the RONPAKU (Ph.D. Dissertation) Program

Grantees of the RONPAKU (Dissertation Ph.D.) Program offered by the Japan Society for the Promotion of Science (RONPAKU fellows) conduct their research under the supervision of advisors in the respective department of the Graduate School. Currently, one overseas researcher is in the program.



General Information

Hours and Closing Days

Hours	10:00 a.m. to 5:00 p.m. Entry permitted up to 4:30 p.m.
Closing days	Every Wednesday. When a national holiday falls on a Wednesday, the Museum is closed instead on the following day. The Museum is closed from December 28 until January 4 for the year-end and New Year period.

Admission Charges

	Individual	Groups (20 persons or more) and visitors eligible for discount *
Adults	¥580	¥490
College and University Students	¥250	¥200
High School Students and Younger	Free	

An additional charge may be necessary for Special Exhibitions.  
Admission is free for holders of a Disabled Person's Handbook and one accompanying person per holder.  
Admission is free for members of the Japanese Society of Cultural Anthropology, International Council of Museums, and Japan Association of Museums (a membership certificate is required).  
The following visitors qualify for a discounted admission charge (please present documentation); 1) Groups of 20 or more; 2) College, university, graduate, and vocational school students who use the Museum as part of their course work; 3) those who have visited the Museum within the previous three months; 4) Visitors aged 65 and over (ID required)  
(If you purchase a regular Museum ticket at the entrance to the Natural and Cultural Garden, the difference will be refunded at the Museum.)

Contact Information

National Museum of Ethnology  
10-1 Senri Expo Park, Suita, Osaka 565-8511, Japan  
Tel: +81-6-6876-2151 Fax: +81-6-6875-0401

Website

https://www.minpaku.ac.jp/english/

Information and Services

**The Minpaku Associates** Tel: +81-6-6877-8893 (Senri Foundation 9:00 a.m. – 5:00 p.m. on weekdays only) minpakutomo@senri-f.or.jp  
The organization, Minpaku Associates was formed to support the activities of the National Museum of Ethnology and to use its facilities actively.  
With cooperation of the Museum, the Minpaku Associates publishes Kikan Minzokugaku (Quarterly Ethnology) and organizes and operates “training trips,” offering opportunities for direct contact with various cultures, experience seminars, lectures, and other events.

**Museum Shop (Hours: 10:00 a.m. to 5:00 p.m.)** Tel: +81-6-6876-3112  
Visitors can buy folk crafts from various parts of the world and books on anthropology and ethnology in the museum shop.

**Restaurant (Hours: 11:00 a.m. to 4:30 p.m. Last Orders: 4:00 p.m.)** Tel: +81-6-6876-1293  
With 130 seats (110 inside the restaurant and 20 on the terrace) available, our restaurant accepts reservations from groups of various sizes: from a few individuals to parties of a larger number of people. Group customers can also reserve our box lunches.



Minpaku Associates Desk



Museum Shop



Restaurant



“Ethnological Study Tours Overseas” organized by Minpaku Associates (Minpaku Tomonokai)



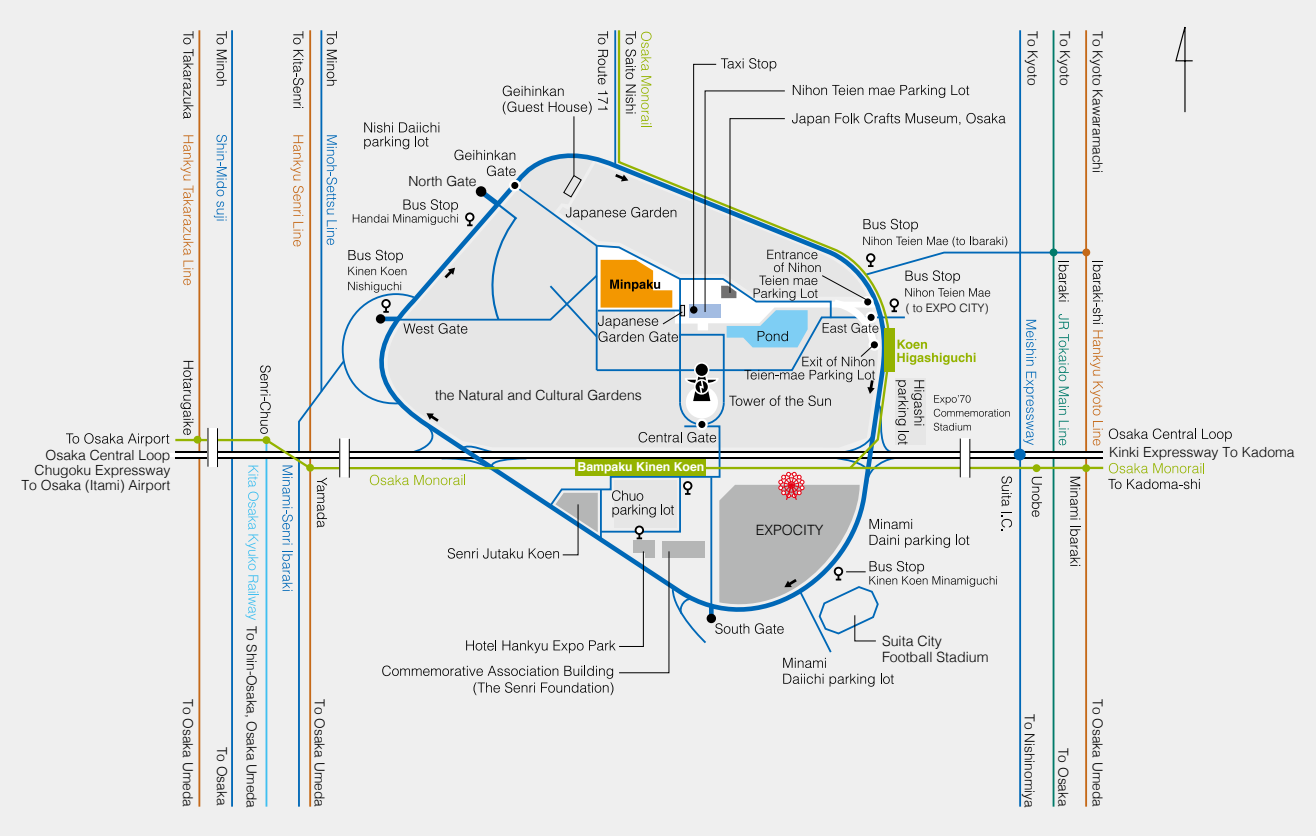
Kikan Minzokugaku [Ethnological Quarterly]

Access Information

- By Osaka Monorail, from Bampaku Kinen Koen Station or Koen Higashiguchi Station it is about a 15-minute walk to the Museum through the Natural and Cultural Garden.
- By bus, from Hankyu Ibaraki-shi Station and JR Ibaraki Station alight at Nihon Teien Mae, from which it is about a 13-minute walk to Minpaku.
- By car, please park at one of the parking lots for the Expo’70 Commemorative Park. From the nearest pay parking lot, in front of the Japanese Garden, it is about a 5-minute walk to the Museum. Please enter the Museum through the Japanese Garden Gate.
- By taxi, you will get dropped off in the parking lot in front of the Japanese Garden. Please enter the Museum through the Japanese Garden Gate.

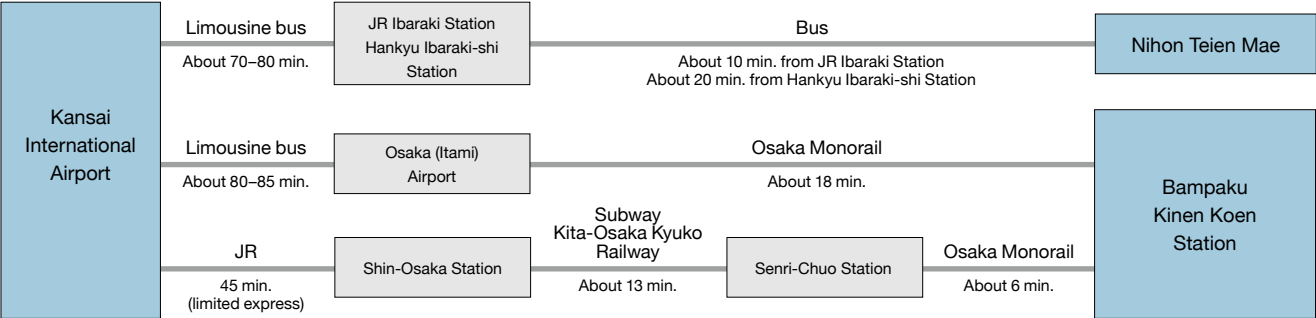
\* Please buy a museum ticket at the gate of the Expo’70 Commemorative Park. Ticket holders can pass through the park at no charge.  
\* If you visit the Expo’70 Commemorative Park, you need to buy an entry ticket.

Map



Major Access Routes

Access routes to the Museum from airports and major railway stations are as shown below.





Survey and Guide

2020-21



**National Museum of Ethnology**

10-1 Senri Expo Park, Suita, Osaka 565-8511, Japan

