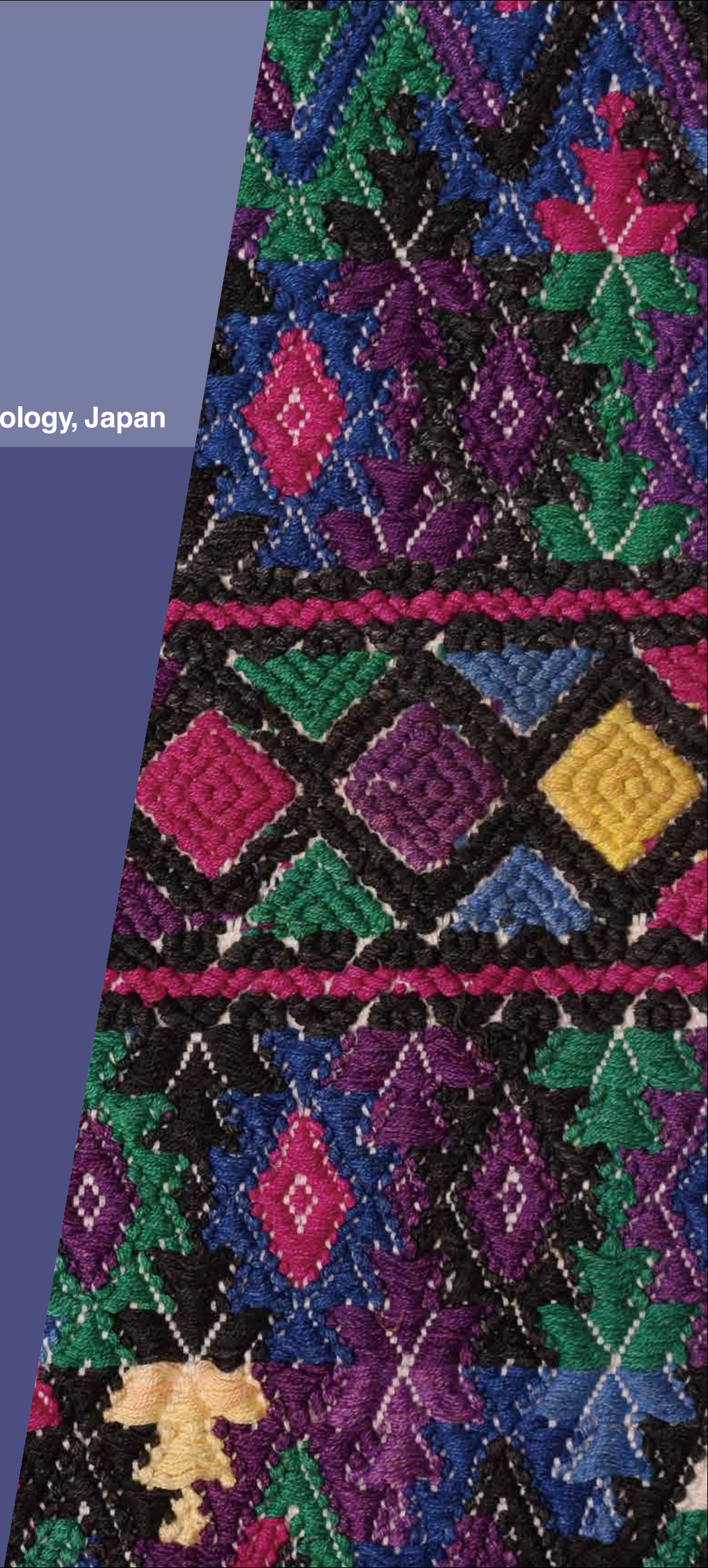


National Museum of Ethnology, Japan

Survey and Guide

2021-22





National Museum of Ethnology, Japan

Survey and Guide for 2021-22

(Fiscal year April 1, 2021–March 31, 2022)

Contents

Preface	1
Purpose and Functions	2
Organization	3
Governing Body/Research organization	3
Center for Cultural Resource Studies	6
Center for Academic Research Development	7
Institutional Research (IR)	7
Research Activities	8
Joint Use of the Museum	24
Joint-Use Facilities for Scientific Research	24
Library	25
Materials	26
Exhibitions	28
International Cooperation	36
Partnership between the Museum and Society	37
Data Collection	41
History	42
Former Directors-General/Professors Emeriti	43
Facilities	45
Cooperative Agreements	46
Materials and Databases	48
National Institutes for the Humanities	52
SOKENDAI (The Graduate University for Advanced Studies)	54
General Information	56



Cover: Woven Tunic (Huipil), Guatemala

Preface

In 1974, the National Museum of Ethnology, Japan (Minpaku) was founded as an Inter-University Research Institute in the field of cultural anthropology and ethnology, equipped with one of the world's largest museum facilities. It opened to the public in 1977 at the site of the 1970 International Exposition located in Senri, Osaka.

Each researcher at Minpaku engages in field work in various parts of the world to promote investigative study of the diversity and commonality of human culture and the dynamic state of society on a global scale. To date, over 345,000 objects have been collected at Minpaku, constituting the world's largest ethnographic collection after the second half of the 20th century. Two departments of the School of Cultural and Social Studies of the Graduate University for Advanced Studies (SOKENDAI) are also based in the museum. The National Museum of Ethnology is regarded as the only anthropological institution in the world equipped with research, education and museum facilities which are able to cover the entire globe.

Based on such academic resources, which are unparalleled in the world, Minpaku continues to conduct its activities under the mission of "creating global human coexistence science," which helps to raise our understanding of human cultures and societies, to produce a deeper understanding of a recognition of oneself and others and to present guidelines for human symbiosis.

Human civilization today is facing the greatest turning point in several centuries. Up until recently, the group that was regarded as central ruled and controlled in a unilateral manner the group regarded as peripheral. The dynamics of this power relationship seem to be changing now. These days, we witness that contacts, interactions and amalgamation, including the creative and the destructive, are occurring worldwide in a bilateral manner between those two entities, one used to be regarded as central and the other peripheral.

In 2020, we have been forced to confront a situation never experienced before by humanity: the almost simultaneous spread of the novel coronavirus disease (COVID-19) pandemic around the world. This situation has compelled humans to review customary practices and rules that had been regarded as normal in daily life, i.e., the formation and state of every institution and standard established in modern history. The significance and the reasons for existence of such institutions and standards have been re-examined. A sense of discrimination latent in society has surfaced, and new developments that divide the world are emerging.

I believe that the wisdom of cultural anthropology is needed now more than ever to establish a world where, while respecting diverse cultures, we will be able to live together by bridging the gap between different languages and cultures. The extremely grave responsibilities attach to Minpaku as an international core hub of anthropology.

Minpaku has been intensely promoting special research entitled "Contemporary Civilization and the Future of Humanity: Environments, Culture and Humans." This international joint research effort has been designed to tackle the challenges facing humanity, including infectious diseases, through multifaceted approaches spanning various fields, and to find guiding principles for the future. We have already begun reporting the achievements from research in Japan and abroad.

In addition, Minpaku is promoting the "Info-Forum Museum" project. The project aims to share information about its collection, such as artifacts, photos and videos, with not only researchers and users at home and abroad but also with local communities as original producers (for photos, with local communities as subjects), and add the newly gained insights into the database for subsequent sharing, leading ultimately to new joint research, joint exhibition, and community activities.

Through these research and museum activities, the National Museum of Ethnology, Japan is trying to establish, in a more evolved and substantial manner than ever before, the "forum of wisdom." That is, a place where diverse people will enjoy having intellectual interactions, sharing their ideas and engaging in collaborative works.

I sincerely ask for your continued cooperation and support in implementing our activities.



YOSHIDA Kenji
Director-General
National Museum of Ethnology, Japan



Purpose and Functions

Purpose

The National Museum of Ethnology conducts anthropological and ethnological research and aims to promote a general understanding and awareness of peoples, societies and cultures around the world through the collection and conservation of ethnographic materials and public exhibitions. Minpaku was established in 1974 as an Inter-University Research Institute under the “Law to amend part of the National School Establishment Law” (No. 81, 1974). In April 2004, it made a fresh start as a member of the National Institutes for the Humanities, under the “National University Corporation Act” (No. 112, 2003).

Functions

Research Institute	The Museum functions as a research institute equipped with a museum. It serves as a research center for anthropology and ethnology, providing information and research results to academic communities and the general public through publications, exhibitions, and other means.
Joint Research	As an Inter-University Research Institute, the Museum supports and organizes joint research projects with researchers from other academic institutions. Materials collected and stored in the Museum are used widely by those researchers.
Information Center	Over the years, the Museum has collected and maintained a great variety of ethnological research materials. These include artifacts, audiovisual records, books and other forms of research data. The Museum is also a repository for the Human Relations Area Files (HRAF). Information about these materials is provided to researchers via computer databases.
Exhibitions	<p>The research results of the Museum are open to the public through exhibitions. Minpaku emphasizes the close-linkage between research and exhibition as a basic policy, and its academic staff participate in planning and organizing exhibitions. The main halls display regional and cross-cultural exhibitions. The former displays cultures and societies in major regions, such as Oceania and the Americas, whereas the latter emphasizes cultural elements such as music and language, which are shared across human societies.</p> <p>Thematic Exhibitions are also held occasionally. These focus on rapidly changing global situations and feature current research in cultural anthropology and ethnology. The Museum also presents, Special Exhibitions in spring and/or fall, in the Special Exhibition Hall.</p>
Social Contributions	Also with the objective of presenting its latest research findings to the public, the Museum offers academic lecture programs, seminars, the Weekend Salon, special lectures and performances, film shows, and various workshops. The Museum also organizes intensive courses on museology and various projects for other museums as part of its international cooperation activities.
Graduate Programs	The School of Cultural and Social Studies of SOKENDAI (The Graduate University for Advanced Studies), based at the Inter-University Research Institute, is located at the Museum. It has two courses: Regional Studies and Comparative Studies. These Departments offer research training programs leading to the Ph.D. degree with the aim of producing unique professional scholars. The Museum also cooperates with other universities in training graduate students enrolled in doctoral programs.



Organization

Governing Body as of April 1, 2021

Director-General Sixth Director-General April 2017– YOSHIDA Kenji Representation of Culture in Museum	Deputy Director-General (in charge of research, exchange and Institutional Research (IR)) HIRAI Kyonosuke Professor, Department of Globalization and Humanity	Deputy Director-General (in charge of planning and coordination) SEKI Yuji Professor, Department of Modern Society and Civilization	System Coordinator NISHIO Tetsuo Professor, Department of Globalization and Humanity	Audit Office SHIMADA Kenji Director
---	---	---	--	--

Administrative organization as of April 1, 2021

Office of Administration SHIMADA Kenji Director	Office of Information and Documentation SEKI Yuji Director	SHIMADA Kenji Deputy Director
General Affairs Section TSUNEYOSHI Yuji Head	Research Cooperation Section WAKAMATSU Shinichi Head	Finance Section MAEDA Kazuyuki Head
	Information Planning Section KANEKUNI Seiji Head	Information Systems and Services Section HOJO Mitsutoshi Head

Board of Advisors as of April 1, 2021

The advisors discuss the Museum’s management, and operational issues of critical importance, at request of the Director-General.

DEGUCHI Akira Professor, Faculty of Law and Literature, Shimane University	SANO Chie Honorary Researcher, Center for Conservation Science Independent Administrative Institution Tokyo National Research Institute for Cultural Properties	HIRAI Kyonosuke Deputy Director-General (in charge of research, exchange and (IR)), National Museum of Ethnology/Director,Center for Academic Research Development	SONODA Naoko Director, Department of Advanced Human Sciences, National Museum of Ethnology
GOTO Akira Professor, Faculty of Humanities, Nanzan University	TOMIZAWA Hisao Vice President, University of Shizuoka	MIO Minoru Director, Department of Globalization and Humanity, National Museum of Ethnology	SUZUKI Motoi Director, Center for Cultural Resource Studies, National Museum of Ethnology Course-Director, Department of Comparative Studies, School of Cultural and Social Studies, SOKENDAI(The Graduate University of Advanced Studies)
KUBOTA Sachiko President, Ashiya University/Professor Emeritus, Kobe University	TOYODA Yukio Professor Emeritus, Rikkyo University	NOBAYASHI Atsushi Director, Center for Cultural Resource Studies, National Museum of Ethnology	UDAGAWA Taeko Director, Department of Cross-field Research, National Museum of Ethnology
KURIMOTO Eisei Professor, Graduate school of Human Sciences, Osaka University	YAMANASHI Toshio Former Director, The National Museum of Art, Osaka	SEKI Yuji Deputy Director-General (in charge of planning and coordination), National Museum of Ethnology/Director, Office of Information and Documentation	
MATSUDA Motoji Professor Emeritus, Kyoto University	FUKUOKA Shota Director, Department of Modern Society and Civilization, National Museum of Ethnology		

External Evaluation Committee as of April 1, 2021

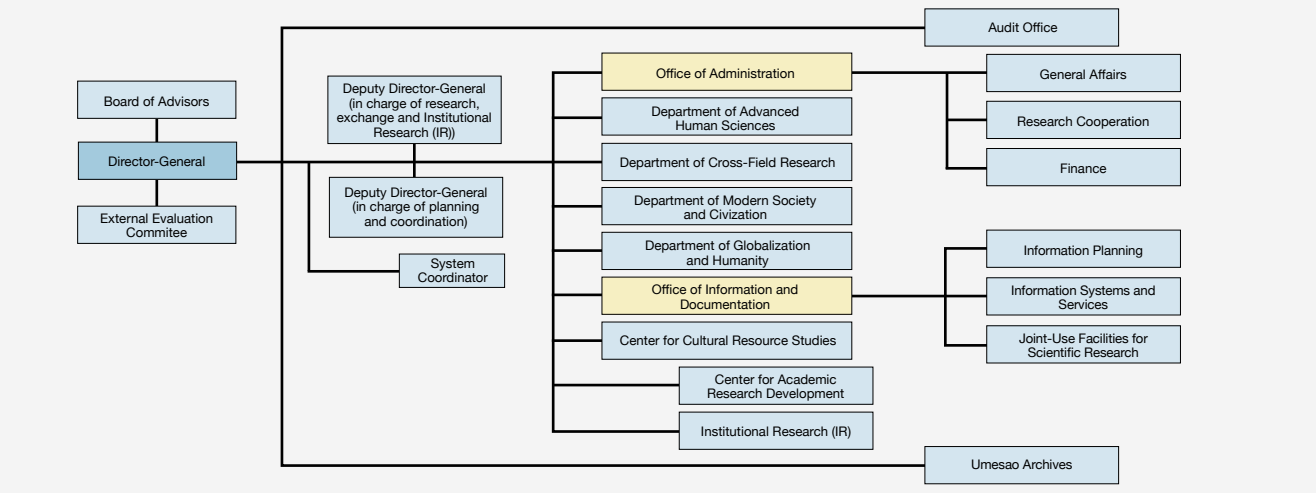
The committee meets to inspect and evaluate the Museum’s research and educational activities at request of the Director-General.

ADACHI Jun Deputy Director General, National Institute of Informatics	ICHIKAWA Mitsuo Professor Emeritus, Kyoto University	MAKINO Koji Deputy Director, JICA Ogata Sadako Research Institute for Peace and Development	OKAZAKI Yoshiko Former President/Professor Emeritus, University of the Sacred Heart	YAMAMOTO Matori Professor Emeritus, Hosei University
HORII Yoshitane Advisor, KANSAI OSAKA 21st Century Association	KOSAKA Hajime Chairman, The Resona Foundation for Asia and Oceania	MIZUSAWA Tsutomu Director, The Museum of Modern Art, Kamakura & Hayama	TANAKA Masakazu Vice-president, Professional Institute of International Fashion	

Organization Consists

Under the Director-General, two Deputy Directors-General (one in charge of research exchange and Institutional Research (IR), and one in charge of planning and coordination) are appointed to oversee the Department of Advanced Human Sciences, Department of Cross-Field Research, Department of Modern Society and Civilization, Department of Globalization and Humanity, Center for Cultural Resource Studies, Center for Academic Research Development, Institutional Research (IR) Office, and Umesao Archives. Our administrative organization consists of the Audit Office, Office of Administration (General Affairs Section, Research Cooperation Section and Finance Section) and Office of Information and Documentation (Information Planning Section and Information Systems and Services Section). Our research organization was changed in April 2017, to respond to the global-scale challenges of today’s world, pioneer new academic frontiers promote research projects leading to new value creation, and promote cross-field area studies firmly rooted in cultural anthropology and museum functions.

Organization Chart as of April 1, 2021



Research organization as of November 1, 2021

Department of Advanced Human Sciences

SONODA Naoko Director

Professors		Associate Professors		Assistant Professors
HIDAKA Shingo Conservation Science	SASAHARA Ryoji Folk Culture, Performing Arts; Japan	KAWASE Itsushi Visual Anthropology	OKADA Emi Ethnomusicology, South Asian Studies	HIRANO Chikako Cultural Anthropology, Indigenous Australian Studies
KIKUSAWA Ritsuko Linguistics, Austronesian Languages	SONODA Naoko Conservation Science	MARUKAWA Yuzo Informatics of Association, Information Service for Cultural Assets	YOSHIOKA Noboru Linguistics, South Asian Studies	SUEMORI Kaoru Conservation Science, Asian Art Studies
Project Assistant Professor				
ICHINO Shinichiro Institutional Research and Evaluation				

The purpose of this Department is to deepen theoretical research in the basic study of human sciences and thereby extract new academic challenges and create a new cross-disciplinary domain.

Department of Cross-Field Research

UDAGAWA Taeko Director

Professors		Associate Professors		
HAN Min Social Anthropology; China	MATTHEWS, Peter J. Ethnobotany, Prehistory, Crop Plant Biogeography; Asia, Pacific	SHINMEN Mitsuhiro Science of Religion; Eastern Europe	MATSUO-GOGATE Mizuho Cultural Anthropology, South Asian Studies	OTA Shimpei Sociocultural Anthropology; Northeast Asia
HAYASHI Isao Social Structure, Cosmology, Risk and Disaster; Melanesia, Polynesia, Japan	MINAMI Makito Ecological Anthropology; South Asia	UDAGAWA Taeko Cultural Anthropology, Gender Studies; Italy, Mediterranean Europe	NARA Masashi Cultural Anthropology, Chinese Studies	SUGASE Akiko Anthropology, Middle Eastern Studies
KASHINAGA Masao Ethnography of Southeast Asia; Vietnam, Tai Area				

The Department aims to create a new domain of anthropological area studies by deepening regional ethnographic research in various regions of the world and establishing new foundations for cross-field research.

Department of Modern Society and Civilization

FUKUOKA Shota Director

Professors		Associate Professors		
FUKUOKA Shota Ethnomusicology; Southeast Asia, Indonesia	SAITO Akira Ethnohistory; Latin America	FUJIMOTO Toko Cultural Anthropology, Central Asian Studies	SAITO Reiko Ainu and Northern Indigenous Peoples Studies, Material Culture; North Pacific Rim	UEBA Yoko Textile and Handcraft; South Asia, Middle East
IKEYA Kazunobu Environmental Anthropology, Cultural Geography; Southern Africa, Japan	SEKI Yuji South American Archaeology, Cultural Anthropology	ITO Atsunori Social Anthropology, Native American Studies, Indigenous Arts and Intellectual Property Issues	UDA Shuhei Environmental Folklore; East Asia	
	YAMANAKA Yuriko Comparative Study of Traditions on Alexander the Great; West Asia, Iran			

The Department aims to create a set of new values for responding to that challenges humanity faces today, and to envisage the future of civilization through interdisciplinary approach of looking into the future by way of the events of the past.

Department of Globalization and Humanity

MIO Minoru Director

Professors		Associate Professors		Assistant Professors
HIRAI Kyonosuke Economic Anthropology, Anthropology of Work; Southeast Asia	NOBUTA Toshihiro Social Anthropology; Southeast Asian Studies	AISHIMA Hatsuki Social Anthropology; Islam, Middle East	NIWA Norio Social Anthropology; Oceania	CHE Sohee Medical Anthropology, Northeast Asian Studies
MIO Minoru Religious Anthropology; South Asia, India	SUZUKI Nanami Cultural Anthropology, Culture of Medicine, Life-design Studies, American and European Medieval Social History	NAKAGAWA Osamu Cultural Anthropology, Anthropology of Europe	SUZUKI Hideaki History of the Indian Ocean World, Swahili Society	YAGI Yuriko Cultural Anthropology, Latin American Studies
NISHIO Tetsuo Linguistics, Arab Culture; Middle East, North Africa				

To create new values for responding to challenges that humanity faces today, the department and to envisage a global society through an interdisciplinary approach of taking a bird's eye view of the world by way of regional events.

Center for Cultural Resource Studies

NOBAYASHI Atsushi Director

Professors		Associate Professors	
IIDA Taku Ecological Anthropology, Fisher Studies; Madagascar, Japan	MORI Akiko Cultural Anthropology, Ethnography; Central Europe, Germany, Austria, Japan	HIROSE Koujirou Japanese Religious History, Folklore	SHIMAMURA Ippei Cultural Anthropology, Mongolian Studies
KISHIGAMI Nobuhiro (Joint Appointment) Cultural Anthropology, Inuit Studies; North America	NOBAYASHI Atsushi Ethnoarchaeology, Material Culture, Austronesian Cultures; East Asia, Formosa	MISHIMA Teiko Anthropology, International Migration; Senegal, West Africa	TERAMURA Hirofumi Culture and Information Science, Archaeological Information
	SUZUKI Motoi Anthropological Perspectives on Development Assistance Evaluations	ONO Rintaro Marine Archaeology, Southeast Asian Studies	

The Center aims to plan and promote research projects that improve the sharing of cultural resources in an interdisciplinary and international manner.

Center for Academic Research Development

HIRAI Kyonosuke Director

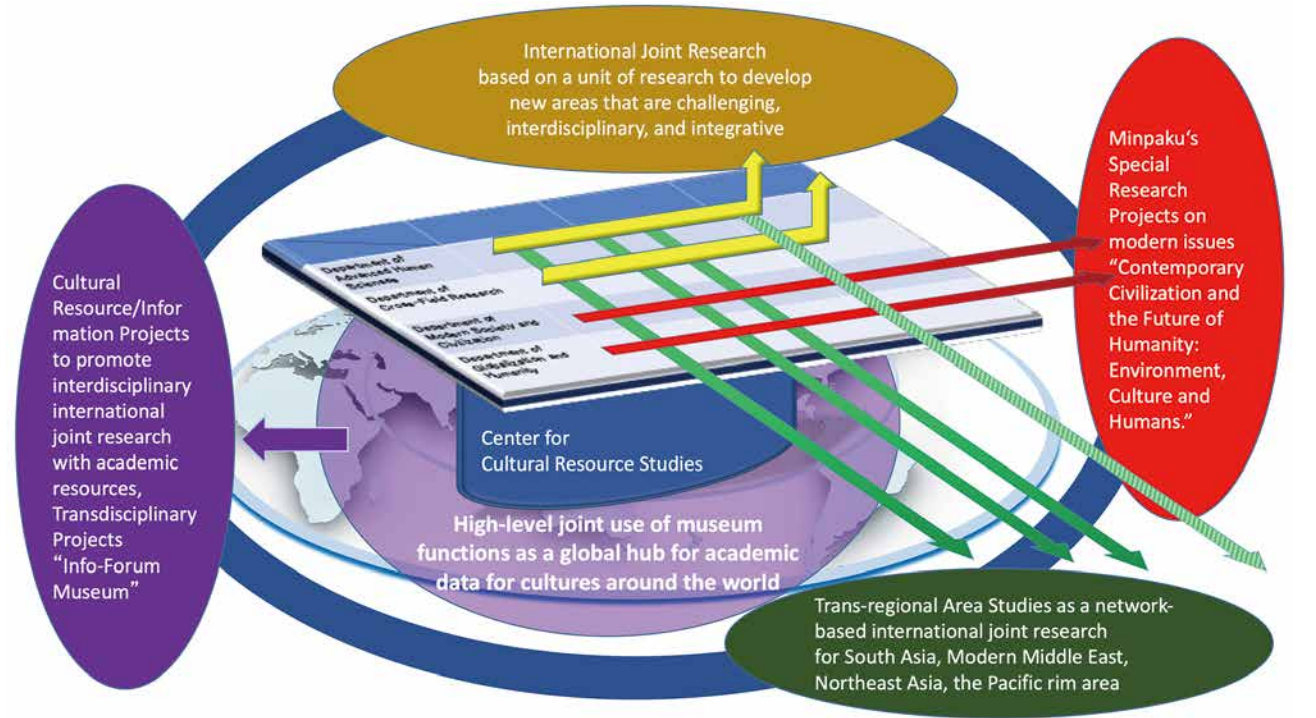
HAN Min Professor, Department of Cross-Field Research	NIWA Norio Associate Professor, Department of Globalization and Humanity	SUZUKI Hideaki Associate Professor, Department of Globalization and Humanity
NARA Masashi Associate Professor, Department of Cross-Field Research	SAITO Akira Professor, Department of Modern Society and Civilization	UDA Shuhei Associate Professor, Department of Modern Society and Civilization

The Center aims to plan and oversee the infrastructure enhancement and international and national strategies for research organizations to be used jointly to explore new domains.

Umesao Archives

IIDA Taku Director

MARUKAWA Yuzo Associate Professor, Department of Advanced Human Sciences	SUEMORI Kaoru Assistant Professor, Department of Advanced Human Sciences
--	--



Visiting Research Fellows

Department of Modern Society and Civilization

KONAGAYA Yuki
Inspector General, Japan Society
for the Promotion of Science
Anthropology on Nomadism in Mongolia,
Central and North Asia

Research Associates

Department of Advanced Human Sciences

TSUJI Kunihiro
Kunihiro Tsuji Design
Construction of a Next-Generation Exhibition
Guide System

UEMURA Yukio
Professor, Faculty of Music, Tokyo University of the Arts
Reconstruction and Revitalization of Japanese Folk Music
through Utilizing the Toyo Ongaku Gakkai Sound Archives
Preserved in the National Museum of Ethnology

Department of Cross-Field Research

AZUMA Kentaro
Associate Professor, Graduate School of Humanities,
Nagoya University
A Study on the Dynamism of Tourization and De-tourization
in the Age of Globalization

KAWAI Hironao
Associate Professor, Faculty of Humanities and Social Sciences,
Tokyo Metropolitan University
Reevaluation of Anthropological Theories in the Realm
of Chinese Studies: 12 Topics

Department of Modern Society and Civilization

KAMEI Tetsuya
Professor, School of Contemporary Sociology,
Chukyo University
An Anthropological Study on Cultural Resources
and Ethnicity in Africa

KATAOKA Tatsuki
Professor, Graduate School of Asian and African Area Studies,
Kyoto University
Toward a New Perspective for Japan Studies Reflecting
Overseas Field Experiences

MIZUKOSHI Shin
Professor, Interfaculty Initiative in Information Studies,
The University of Tokyo
Theoretical and Methodological Examination of Media
Anthropology

NAKAO Katsumi
Professor, College of Arts and Sciences,
J.F. Oberlin University
Relation of Nation-States with Knowledge of Anthropology
and Folklore: Nationalism and Intelligence
in the Former Half of Twentieth Century

NAKATANI Ayami
Professor, Research Institute for the Dynamics
of Civilizations, Okayama University
Production and Consumption of Traditional Textiles:
The Transformation of Local Perceptions through the Politics
of Cultural Heritage and Tourism

SAGAWA Toru
Associate Professor, Faculty of Letters, Keio University
The Dynamics of Frontier Spaces in Contemporary
Sub-Saharan Africa, South-East Asia and Latin America

Department of Globalization and Humanity

MORIMI Tomihiko
Novelist
The Challenge of Fantasy in Modern Global Society:
Relocating Idiosyncratic Imagination as a Factor
of Human Evolution

NAITO Naoki
Associate Professor, Graduate School of Technology,
Industrial and Social Sciences, Tokushima University
Ethnography of Capital and Power:
Towards an Ecology of Publicness

NISHI Makoto
Associate Professor, Graduate School of Humanities
and Social Sciences, Hiroshima University
Anthropological Inquiries into Uncertainty,
Apprehension, and Responsibility

SHIRAI Chiaki
Professor, Faculty of Humanities and Social Sciences,
Shizuoka University
Interdisciplinary Study on Reproductive Technology
and Childrearing in Modern Asia

TANUMA Sachiko
Associate Professor, Faculty of Humanities
and Social Sciences, Tokyo Metropolitan University
Morality within Neoliberalism

YAMA Yoshiyuki
Professor, School of Human Welfare Studies,
Kwansei Gakuin University
Narrative Politics of “Tolerance / Intolerance”
in the Global Era

Center for Cultural Resource Studies

KAZAMA Kazuhiro
Professor, Graduate School of Human
and Environmental Studies, Kyoto University
The Anthropological Study of Historical Memory and Emotions
on the Intercourse with Other Peoples in Oceania and Island
Southeast Asia

ŌNISHI Hideyuki
Professor, Faculty of Contemporary Social Studies,
Doshisha Women's College of Liberal Arts
Rethinking Ethnographic Records of Seiichi Izumi with
Emphasis on Saru River Research

OSAKA Taku
Researcher, Hokkaido Museum Ainu Culture Research Center
Study of Ainu Material Culture in the First Half
of 20th Century

YAMAGUCHI Mikako
Associate Professor, Graduate School of Humanities
and Human Sciences, Hokkaido University
The Anthropology of the “Depicted Animals”:
Focusing on the Becoming in Animals and Humans

Overseas Visiting Fellows

RUAN, Yunxing
Professor, Zhejiang University, China
February 1 – November 20, 2021
Cultural Heritage and Community in the Age of Digital
Intelligence: A Comparative Study of Cultural Heritage
in Japan and China

YU, Pei-lin
Adjust Associate Professor, Boise State University, USA
March 1 – July 29, 2022
East Asian and Austronesian Island Gardens in Evolutionary
Perspective

NITZKY, William David
Associate Professor, California State University, USA
November 1, 2021 – July 29, 2022
Comparative Museology in East Asia from the Viewpoint of
Community Relations

Center for Cultural Resource Studies

Object

The Center for Cultural Resource Studies was established on April 1, 2017, with the objective of improving access to cultural resources at the Museum for interdisciplinary and international research.

Development of Cultural Resource Study

The National Museum of Ethnology (Minpaku) owns about 345,000 artifacts, 70,000 items of video and sound resources, 670,000 books, and other research resources such as photographic archives, research database, and field note archives, survey papers, and other ethnological research papers left by cultural anthropologists and ethnologists. These are important cultural resources that relate to the humanity’s cultures and activities, and precious academic resources to reflect on the past, present and future of humanity. The Museum is undertaking projects to improve the shared availability of these cultural resources for interdisciplinary and international research, by publishing the research results and information on these cultural resources through a database called Info-Forum Museum, and through other media including Special Exhibitions, Thematic Exhibitions, and Traveling Exhibitions. The Center supports these research projects, and plans and promotes new projects.

Research Fellows

KIM Yujin
Support for the shared use of academic information, particularly
for the Info-Forum Museum

UEHATA Fumi
Support for institutional research and evaluation

Project Research Fellows

HASHIMOTO Sachi
Assistant work for the cultural resource planning project
“Research on the Preservation and Management of Tangible
Cultural Resources”

ISHIYAMA Shun
Digitalization and copyright procedures of photo materials

KAWAMURA Yukako
Assistant work for the cultural resource planning project
“Research on the Preservation and Management of Tangible
Cultural Resources”

KOBAYASHI Naoaki
Digitalization and copyright procedures of photo materials

SAGARA Keiko
Operations for the project “Creation of Communication
Symbiosis Science”

SANO Fumiya
Operation for the project “Integrating Language Change in Time
and Space: Applying Geographical Information System (GIS)
and Statistic Modelling to Historical Linguistics”

Research Fellows,
NIHU Center for Transdisciplinary
Innovation(CTI)

Center for South Asia Studies

TAKEMURA Yoshiaki
Project Assistant Professor

Center for Modern Middle East Studies

KURODA Kenji
Project Assistant Professor

Center for Northeast Asia Studies

KARASHIMA Hiroyoshi
Project Assistant Professor

Research Fellows,
NIHU Center for Information
and Public Relations(CIP)

Liberal Arts Communicator

KAMINO Chie
Project Assistant Professor

Projects of FY2020

In FY2020, the Center supported the promotion of 3 database establishment projects and 8 database improvement projects based on the project to build the “Info-Forum Museum for Cultural Resources of the World”, and also planned an international workshop “Fishing and Material Culture in Maritime Asia”. Concurrently, the Center assisted in the preparation and organization of the following exhibitions: special exhibitions (“Treasures of Indigenous Peoples” and “Local cultures assisting disaster revitalization: 10 years since the Great East Japan Earthquake”), thematic exhibition (“UMESAO Tadao’s 100th Anniversary: The Front-runner of Intellectual Production”), traveling exhibition (“Regnum Imaginarium: Realm of the marvelous and uncanny”) and cooperative exhibitions (“Shifting Cultivation from the perspective of Komei Sasaki: from Itsuki-mura to the world: Historia Terrace Itsukidani” and “Umesao Tadao's 100th Anniversary: The Front-runner of Intellectual Production: The Kyoto University Museum”). Additionally, the center conducted research to improve the joint use of academic resources.

Projects of FY2021

In FY 2021, we will mainly pursue three projects.

Research Promotion and Support for Info-Forum Museum Building Project

Since FY2016, this Museum has managed an Institution-based Transdisciplinary Project of the National Institutes for the Humanities, entitled “Building of Info-Forum Museum for Cultural Resources of the World.”

In FY2021, we expect to launch projects to establish databases, including “Resource for Central and Northern Asia” and “Resource for Southeast Asia,” and projects for database improvement, including “Resource for Japanese Stone Monuments of Tsunami,” “Resource for Senegal Visual Ethnography” and “Resource for *Yakihata* (Swidden Fields) in Asia.”

The Center studies standardization and multilingual translations of the artifacts and resources. It also supports the promotion of these projects through database building, editing and publication.

Research Promotion and Support for Special Exhibitions, Thematic Exhibitions,
and Traveling Exhibitions Project

The Museum implements Special Exhibitions, Thematic Exhibitions, and Traveling Exhibitions, in order to publish its cultural resources and related research outcomes. In FY2021, the Museum will showcase: Special Exhibitions entitled “Local cultures assisting disaster revitalization: 10 years since the Great East Japan Earthquake,” “Universal Museum: Exploring the New Field of Tactile Sensation” and “100 Years of Mongolia: Encounters through Photography,” Thematic Exhibition “The Vibrance of Indian Fabrics” and “Shifting Cultivation from the perspective of Komei Sasaki: from Itsuki-mura to the world” and Traveling Exhibitions “Toys Expo–Japanese Children in Modern Times: Shimane Museum of Ancient Izumo” and “Beads from aynu mosir to the world: National Ainu Museum” among others. The Center will promote the research that will enable these exhibitions and assist in the running of the exhibitions.

Research for Improving the Shared Availability of Cultural Resources

In the FY2021, we will research the ways to promote the interdisciplinary and international joint use of the cultural resources owned by this Museum, and effective ways to contribute to university education, academic research, dissemination of knowledge to the general public, and creation of cultures by their bearers.

Center for Academic Research Development

Object

The Center for Academic Research Development was establish in April 2017, and has assumed the research strategy functions that the Center for Research Development and the Center for International Academic Exchange formerly provided for: national and international shared use and joint research; enhancing infrastructure; and plan and oversee the national and international strategies for the shared use and joint research organizations pioneering new domains. The Center will reinforce the systematic research capabilities of each of our research departments and centers. More specifically, the Center engages in the activities required to promote internationally coordinated or joint research more strategically and systematically, including: improvement in the implementing organization of a research project based on shared use of resources; development, preparation and signing of (national and international) academic exchange agreements and the signing policies thereof; survey of overseas research trends; and information gathering and provision on external finances.

Institutional Research (IR)

Object

The Office of Institutional Research (IR) was established in April 2016 to support the Museum’s planning and decision-making by collecting and analyzing data on the Museum’s research and education and converting the compiled data and analysis results into reference materials.

To fulfill this purpose, the Office mainly does the following: (1) collects and publishes data on research and education; (2) analyzes the data and publishes the results; and (3) provides the data and analysis results for the Museum’s reforms and improvements.

As a member of the National Institutes for the Humanities, the Museum establishes midterm plans and fiscal year plans based on six-year midterm goals set by the Ministry of Education, Culture, Sports, Science and Technology. The Museum also receives evaluations of its research and education from the National University Corporation Evaluation Committee. In addition, the Museum conducts self-inspections and self-evaluations and publishes the findings in a report. The Office of IR collects and analyzes a wide range of data on research and education for these inspections and evaluations.

Minpaku Special Research Projects

Minpaku Special Research Projects are international joint researches implemented with a solution-focused approach to tackle urgent challenges facing our contemporary civilization. The Research started in fiscal year 2016 and will continue for the six years of the third mid-term objective period, under the umbrella theme of “Contemporary Civilization and the Future of Humanity: Environment, Culture and Humans.”

The Western civilization constructed with sciences, technologies, politico-economic systems, social organization, and ideologies that originated in modern Europe has been believed to influence many other countries and areas of the world. Likewise, scientific and technological developments have been believed to enrich the human lives and societies. However, we can also argue that the price for this civilization in the form of population explosion, environmental destruction, war, resource depletion, water shortage, air pollution, and more. This has been a huge burden on human societies. Environmental destruction and population explosion are major challenges that need to be resolved. The former is apparent in all aspects of human life, from living space, to food supply and biodiversity to wars, pollution, global warming and disasters. Population explosion is a two-sided problem: the world’s population will exceed 10 billion in 2060 and approach the Earth’s environmental carrying capacity of 12 billion in 2100. In developed nations, fewer births and aging population have brought about significant difficulties in the sustenance and survival of families and human groups. Against this backdrop, we position the Special Research as research focusing on the analyses of, and solutions to, challenges faced by contemporary human societies. It is necessary to, hypothesize cultural phenomena that way directly and indirectly cause global-scale changes in environmental problems and the world’s population, and to rethink contemporary civilization from the point of view of ‘wisdom’ of local communities that have responded to the civilizations. The aim is to answer the question on how we could create, from the conventional (traditional) set of values, a society that guarantees the coexistence of multiple sets of values and to present a vision of a future focused on the solutions of the problems that the human societies can select, by approaching the research subject as a contemporary system of problems in the multi-tier living space comprising the global space, community space, and societal space.

List of Minpaku Special Research Projects FY2016 - FY2021

Umbrella Theme “Contemporary Civilization and the Future of Humanity: Environment, Culture and Humans”

Theme Category: Environment

Project Leader	Project Title	Category	Project Period
IKEYA Kazunobu KISHIGAMI Nobuhiro	Historical Ecology of Biocultural Diversity: Use and Conservation of Endangered Animals, Plants, and Habitats	① Environmental issues and biodiversity	July 2016 - March 2019
NOBAYASHI Atsushi	Human and Natural History on System of Food Production	② Food issues and eco-systems	April 2017 - March 2020

Theme Category: Culture

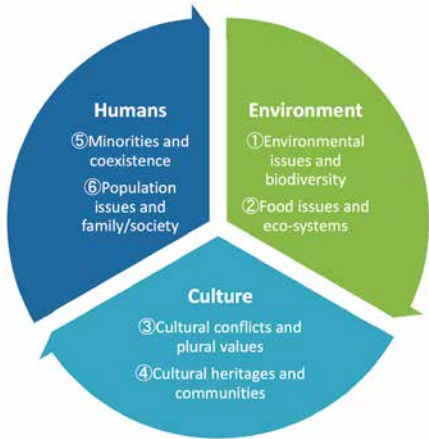
Project Leader	Project Title	Category	Project Period
NISHIO Tetsuo	Global Area Studies: Towards a New Epistemology for Mapping the Globalising World	③ Cultural conflicts and plural values	April 2020 - March 2023
IIDA Taku	Humanity and Communities in Cultural Heritage in the Age of Digital Technology	④ Cultural heritages and communities	April 2019 - March 2022

Theme Category: Humans

Project Leader	Project Title	Category	Project Period
TERADA Yoshitaka FUKUOKA Shota	Performing Arts and Conviviality	⑤ Minorities and coexistence	April 2018 - March 2023
MORI Akiko	Family Potential in Uncertain Times: Mobility, Technology and Body	⑥ Population issues and family / society	April 2021 - March 2024

Special Theme Category

Project Leader	Project Title	Category	Project Period
SHIMAMURA Ippei	Modern Civilization and Infectious Diseases	Modern Civilization and Infectious Diseases	December 2020 – March 2024



Project in FY2016

Project Leader	Project Title
IKEYA Kazunobu KISHIGAMI Nobuhiro	Historical Ecology of Biocultural Diversity: Use and Conservation of Endangered Animals, Plants, and Habitats

Projects in FY2017

Project Leader	Project Title
IKEYA Kazunobu KISHIGAMI Nobuhiro	Historical Ecology of Biocultural Diversity: Use and Conservation of Endangered Animals, Plants, and Habitats
NOBAYASHI Atsushi	Human and Natural History on System of Food Production

Projects in FY2018

Project Leader	Project Title
IKEYA Kazunobu KISHIGAMI Nobuhiro	Historical Ecology of Biocultural Diversity: Use and Conservation of Endangered Animals, Plants, and Habitats
NOBAYASHI Atsushi	Human and Natural History on System of Food Production
TERADA Yoshitaka	Performing Arts and Conviviality

Projects in FY2019

Project Leader	Project Title
NOBAYASHI Atsushi	Human and Natural History on System of Food Production
TERADA Yoshitaka	Performing Arts and Conviviality
IIDA Taku	Humanity and Communities in Cultural Heritage in the Age of Digital Technology

Projects in FY2020

Project Leader	Project Title
FUKUOKA Shota	Performing Arts and Conviviality
IIDA Taku	Humanity and Communities in Cultural Heritage in the Age of Digital Technology
NISHIO Tetsuo	Global Area Studies: Towards a New Epistemology for Mapping the Globalising World
SHIMAMURA Ippei	Modern Civilization and Infectious Diseases

Projects in FY2021

Project Leader	Project Title
FUKUOKA Shota	Performing Arts and Conviviality
IIDA Taku	Humanity and Communities in Cultural Heritage in the Age of Digital Technology
NISHIO Tetsuo	Global Area Studies: Towards a New Epistemology for Mapping the Globalizing World
SHIMAMURA Ippei	Modern Civilization and Infectious Diseases
MORI Akiko	Family Potential in Uncertain Times: Mobility, Technology, and Body

International Symposium
Public Lecture
“The Challenge of Fantasy: On Imagination and the Truth beyond Language”

Date November 6, 2020
Project Leader NISHIO Tetsuo
The total number of participants 619



Serial Academic Webinars
“Cultural Transmission against Collective Amnesia: Bodies and Things in Heritage Practices”

Date February 13 – March 13, 2021 (Five times)
Project Leader IIDA Taku
The total number of participants 474



International Symposium, “Performing Arts and Conviviality” scheduled for March, 2021 has been postponed.

Info-Forum Museum for Cultural Resources of the World
(Instituted Project of the National Institutes for the Humanities Transdisciplinary Projects)

The Museum has been devoted to research on peoples, cultures and societies, and has been collecting diverse tangible and intangible ethno-cultural materials and information worldwide. The staff of the Museum has been working collaboratively with other research institutes, universities, museums, and local societies, both in Japan and around the world, to conduct international collaborative research based on artifacts and related information. The Museum considers it vital to share such materials and information in this era, as “cultural resources of the world,” and hopes to pass them on to future generations. Therefore, “Info-Forum Museum” has been created as a digital databank for global use. It distributes, exchanges, creates, and shares information related to cultural resources of the world. Through this Info-Forum Museum, the staff of the Museum wishes to facilitate mutual communication with both researchers and source communities that originally created the cultural resources. During 2020, the seventh year of this program, three new projects for database establishment, and eight new projects for database improvement were added, bringing the total number of projects to eleven. In our international exchange program, established to promote the internationalization of research, we published a Collections Review on 38 Silverworks Labeled “Hopi” in the Denver Museum of Nature & Science Reconnecting Source Communities with Museum Collections 5 as a resultant publication. This is one of the instituted project of the NIHU Transdisciplinary Projects.

Project under promotion:

1.Project for Database Establishment

The aim of the project is to share information related to cultural resources under the supervision of a project leader and in cooperation with partner organizations at home and abroad, and to thereby to further international joint research to produce contents for the database. Utilization of images and audio data are being promoted, except for common items, for the construction of the database.

2.Project for Database Improvement

The aim of the project is to organize Minpaku’s existing data related to cultural resources and to add new data, thereby improving the database through refinement.

Projects of Info-Forum Museum for Cultural Resources of the World

Project Leader	Project Title*	Category	Period
IIDA Taku	Building a Multilingual and Interactive Database for the Africa Collection	project for database establishment	April 2017 - March 2021 Extend the period due to the COVID-19 pandemic
TERAMURA Hirofumi	Material Culture in Central and North Asia: Ethno-Cultural Objects at the National Museum of Ethnology	project for database establishment	April 2018 - March 2022
ONO Rintaro	Maritime Adaptation and Material Culture in Maritime Asia-Based on the Museum Materials from Southeast Asia	project for database improvement	April 2019 - March 2022
YAGI Yuriko	Building an Info-Forum Database for Cultural Collections of Central and South America	project for database improvement	April 2018 - March 2022 Extend the period due to the COVID-19 pandemic
NIWA Norio	Building an Info-Forum Database for the Asaeda Toshio Collection Focusing on his Oceania Ethnography	project for database improvement	April 2018 - March 2022 Extend the period due to the COVID-19 pandemic
MINAMI Makito	Building an Info-Forum Database for Audiovisual Records of the Gandharba Community, Nepal	project for database improvement	April 2018 - March 2022 Extend the period due to the COVID-19 pandemic
HIDAKA Shingo	Information Disclosure Project for Jidai Gangu collection	project for database improvement	April 2019 - March 2021
HAYASHI Isao	An Info-forum Database for Minpaku Micronesia Collections; Focusing on Materials Collected in the Early 20th Century	project for database improvement	April 2019 - March 2021
HIDAKA Shingo	Cultural Heritage Sites Possessing Memories of Tsunamis: Database of Temples/Shrines and Stone Monuments: Enhancing the Database for the Info-Forum Museum	project for database improvement	April 2020 - March 2022
MISHIMA Teiko	Information Reinforcement based on Video Recordings of Various Ethnic Cultures in Senegal	project for database improvement	April 2020 - March 2022
IKEYA Kazunobu	Internationalization and the Development of Interdisciplinary Studies on Database of “Yakihata (Swidden Fields) - The SASAKI Komei Collection”	project for database improvement	April 2020 - March 2022

*Implemented in FY2020



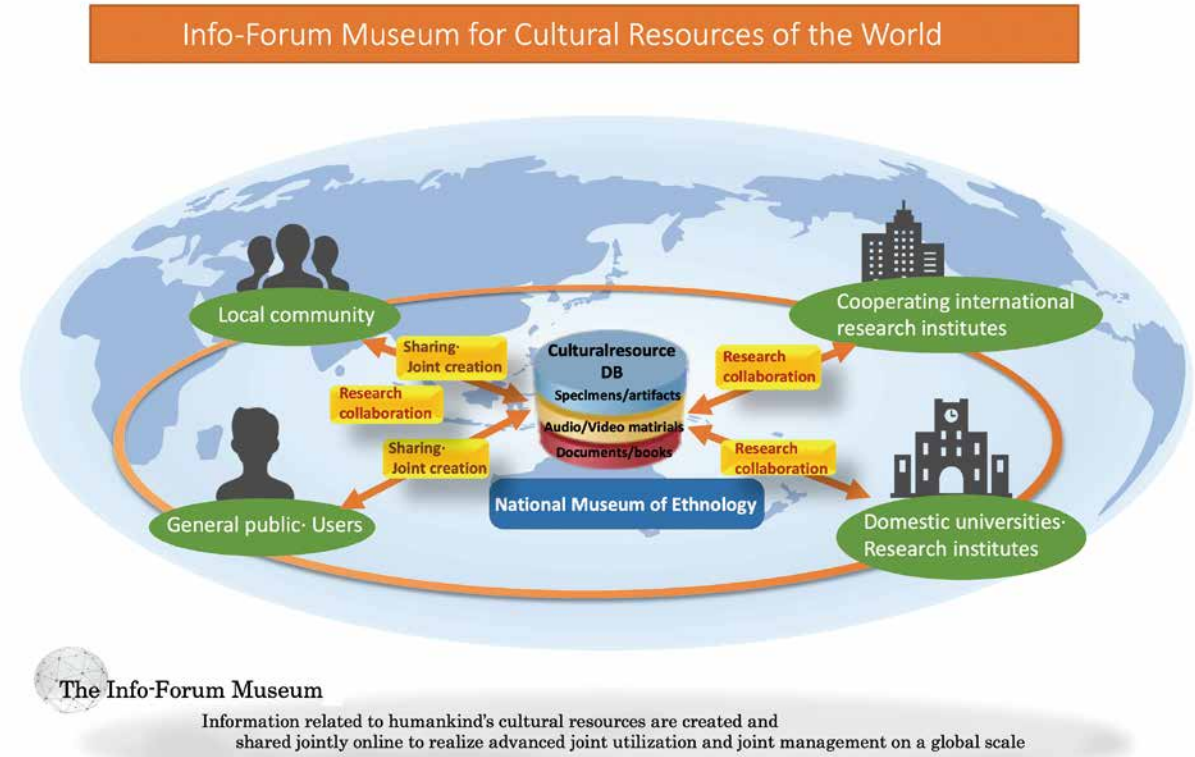
Printed publication of outcomes by the international transmission program



Culture inheritance activities in the source community using the database: Utilization of database for [Song and dancing of Tokunoshima] at Nishiakina Primary School in Tokunoshima



Examination of museum resources and research workshops held in cooperation with researchers invited from overseas



The Info-Forum Museum
Information related to humankind's cultural resources are created and shared jointly online to realize advanced joint utilization and joint management on a global scale



Database opened on the website

Inter-University Research Projects

These projects are conducted jointly by scholars of the Museum and outside organizations. In FY2020, projects were jointly undertaken by the Museum scholars and 112 scholars from national universities, 17 scholars from prefectural and municipal universities, 119 scholars from private universities, and 65 experts from other organizations.

FY2021 Research Theme

○ Projects undertaken outside Minpaku

General Research

Coordinator	Research Theme	Research Period
Project 1: New field development		
○ NAKAO Katsumi	Relation of Nation-States with Knowledge of Anthropology and Folklore: Nationalism and Intelligence in the Former Half of Twentieth Century	2017.10 – 2022.3
○ TANUMA Sachiko	Morality within Neoliberalism	2017.10 – 2022.3
○ KAZAMA Kazuhiro	The Anthropological Study of Historical Memory and Emotions on the Intercourse with Other Peoples in Oceania and Island Southeast Asia	2018.10 – 2022.3
○ NAKATANI Ayami	Production and Consumption of Traditional Textiles: The Transformation of Local Perceptions through the Politics of Cultural Heritage and Tourism	2018.10 – 2022.3
○ NISHI Makoto	Anthropological Inquiries into Uncertainty, Apprehension, and Responsibility	2018.10 – 2022.3
○ SAGAWA Toru	The Dynamics of Frontier Spaces in Contemporary Sub-Saharan Africa, South-East Asia and Latin America	2018.10 – 2022.3
○ YAMA Yoshiyuki	Narrative Politics of “Tolerance Intolerance” in the Global Era	2018.10 – 2022.3
○ NAITO Naoki	Ethnography of Capital and Power towards an Ecology of Publicness	2018.10 – 2022.3
○ AZUMA Kentaro	A Study on the Dynamism of Tourization and De-tourization in the Age of Globalization	2019.10 – 2022.3
NOBAYASHI Atsushi	Dietary and Staple Food in the Sustainable Society	2019.10 – 2022.3
KAWAI Hironao	Reevaluation of Anthropological Theories in the Realm of Chinese Studies: 12 Topics	2019.10 – 2022.3
SUZUKI Hideaki	Re-construction of the Notions of Movement in Human History: With Focus on Friction between “Free” and “Unfree”	2019.10 – 2022.3
ONO Rintaro	Anthropological Study of Human Burial Practice and Culture in Asia and Pacific Islands	2019.10 – 2022.3
○ KATAOKA Tatsuki	Toward a New Perspective for Japan Studies Reflecting Overseas Field Experiences	2020.10 – 2023.3
○ YAMAGUCHI Mikako	The Anthropology of the "Depicted Animals" : Focusing on the Becoming in Animals and Humans	2020.10 – 2023.3
○ SHINMOTO Mariko	Comparative Study on the Influence of International Development on Menstruation: From the Perspective of Gender and Medicalization	2020.10 – 2023.3
KISHIGAMI Nobuhiro	Interdisciplinary Comparison of Historical Change, Current of State, and Future of Indigenous Societies along the North Pacific Rim: From a Perspective of Human History	2020.10 – 2023.3
MORI Akiko	Exploring an Alternative Notion of Community in Uncertain Times: Contingent Arrangement of Material, Institutional, and Body Settings	2020.10 – 2023.3
UDAGAWA Taeko	A Study on the Transformation of Food/Foodways related to Wars and Imperialism: Rethinking the Relationship between Food/Foodways and the Nations	2020.10 – 2023.3
UDA Shuhei	A T-shaped Interdisciplinary Approach to Cormorant Fishing Culture in Japan	2020.10 – 2023.3
○ SHIRAI Chiaki	Interdisciplinary Study on Reproductive Technology and Childrearing in Modern Asia	2021.10 – 2024.3
○ DOI Kiyomi	Reorientation of Uncertainty in Tourism	2021.10 – 2024.3
TAKEZAWA Shoichiro	The Anthropology of Vulnerability	2021.10 – 2024.3

Project 2: Sharing of academic resources		
○ SONODA Naoko	Conservation Science Research on the Establishment of Sustainable Collection Management and Museum Environment	2017.10 – 2022.3
ONISHI Hideyuki	Rethinking Ethnographic Records of Seichi Izumi with Emphasis on Saru River Research	2019.10 – 2022.3
○ UEMURA Yukio	Reconstruction and Revitalization of Japanese Folk Music through Utilizing the Toyo Ongaku Gakkai Sound Archives Preserved in the National Museum of Ethnology	2021.10 – 2024.3
NIWA Norio	A Study on the Formation and Use of Pacific Ethnographic Collections by the Japanese: Focusing on the Toshio Asaeda Collection of the National Museum of Ethnology	2021.10 – 2024.3

Young Researchers

Coordinator	Research Theme	Research Period
Project 1: New field development		
○ FUJITA Mizuho	Experimental Film Project for Extended Interdisciplinary Fields	2018.10 – 2022.3
○ OGATA Shirabe	Interactions between Sensuosity and Institutions: Examining Evocation and Valuation in Art Practices	2019.10 – 2022.3
○ FURUKAWA Fukachi	Anthropological Studies of Mobilities and Materialities	2019.10 – 2022.3
○ KONDO Shiaki	Relationships between Indigenous Peoples and Information Societies	2020.10 – 2023.3
○ MIYASAKA Shinji	A Project to Touch the Shapes of Tradition by Combining 3D Printing with Traditional Materials and Techniques	2021.10 – 2024.3

Public Presentation of Joint Research Results

Since FY2004, some of the Joint Research Project meetings have been made open to the general public. In FY2020 the following projects were hosted.

Date	Title	Venue
August 7, 2020	Conservation Science Research on the Establishment of Sustainable Collection Management and Museum Environment	Held online Edited videos were made available for viewing on the website of the Japan Society for the Conservation of Cultural Property (Oct. 12 – Dec. 12, 2020).

Visiting Researchers FY2020

As an Inter-University Research Institute, the Museum accepts researchers, young doctoral graduates, and doctoral students from domestic and overseas academic and research institutions who wish to conduct research activities at the Museum as Visiting Researchers for a certain period of time. Instructors at the Museum are assigned to host such researchers and graduates. Visiting Researchers who meet certain conditions are permitted to apply for Grants-in-Aid for Scientific Research as project coordinators at the Museum. In FY2020, we accepted a total of 96 researchers, including 18 who were non-Japanese from 6 countries and regions.

Visiting Graduate Student Program FY2020

The Museum, as an Inter-University Research Institute, accepts students who are enrolled in doctoral courses at Japanese national, public, and private universities. Upon request from their universities, these students may be accepted as Visiting Graduate Student in order to provide them with research guidance on specific themes for a fixed period of time. Visiting Graduate Students can pursue their research under the guidance of Museum scholars, use the facilities, and attend classes at the School of Cultural and Social Studies of SOKENDAI (The Graduate University for Advanced Studies) (Regional Studies and Comparative Studies) established at the Museum. In FY2020, we accepted one student from national university, and one from private university.

JSPS Grants-in-Aid for Scientific Research

Grants-in-Aid for Scientific Research provided by the Japan Society for the Promotion of Science are intended to foster the progress of unique and pioneering research projects in all fields ranging from the human and social sciences to the natural sciences, in order to promote academic activities in our country. The aid is awarded to research projects which are especially important in terms of current academic trends, organized on the initiative of individual researchers or research groups in academic institutions.

FY2021 Projects Funded

Category	Head	Research Subject	(Thousands of yen)
Grant-in-Aid for Scientific Research on Innovative Areas – Platforms for Advanced Technologies and Research Resources			
Continued	YOSHIDA Kenji	Platform for Integration and Sophistication of Image Information on Area Studies	32,500
			Total 32,500
Grant-in-Aid for Transformative Research Areas(A)(Public Offered Research)			
New	KURODA Kenji	Research in Sociology of Knowledge on Intellectual Dynamism about Islam and the Understanding of Muslims in Modern Japan	910
			Total 910
Fund for the Promotion of Joint International Research (Fostering Joint International Research(B))			
Continued	KIKUSAWA Ritsuko	Integrating Language Change in Time and Space: Applying Geographical Information System (GIS) and Statistic Modelling to Historical Linguistics	4,160
Continued	ONO Rintaro	Archaeological Study of Human Migrations and Inter-islands Networks in Oceania	4,420
Continued	YOSHIDA Kenji	Innovation in the Study of the Arts in Anthropology: Creating a Platform for International Research in the Anthropology of Images	4,940
Continued	NAGANO Yasuhiko	The “Objects” and Their Sacred Power in the Religions of Tibet -- an International Collaborative Survey	5,720
			Total 19,240
*Fund for the Promotion of Joint International Research (Fostering Joint International Research(A))			
Continued	MATSUO Mizuho	Categorization and Differentiation of Social Groups in the Age of Geneticization: the Cultural Notions of Blood and Gene in India	13,130
			Total 13,130
Grant-in-Aid for Scientific Research (A)			
Continued	KONAGAYA Yuki	Reframing Images of Mongolia: Photographic Records from the 19th Century to Early 20th Century	8,320
Continued	YAMANAKA Yuriko	The Natural and the Supernatural in Comparative Perspective	7,020
Continued	HAYASHI Isao	Materializing and Narrating Collective Memories of Calamities and Education for Disaster Reduction	6,760
Continued	KISHIGAMI Nobuhiro	A Comparative Study of Emergence, Current Status and Future of Indigenous Cultures in Alaska and Northwest Coast Regions of North America	8,840
Continued	SEKI Yuji	Reinventing the Study of Andean Civilization through Analysis of Social Memory	10,920
New	ONO Rintaro	Migration and Island Adaptation of Homo Sapiens in Maritime Asia	5,720
			Total 47,580
Grant-in-Aid for Scientific Research (B)			
Continued	NISHIO Tetsuo	Narrative Informatic Studies of the Story of Sindbad the Sailor: the Emergence and Formation of Literary Function to Co-create a Pluralistic and Multi-valued Society	3,120
Continued	IIDA Taku	Social Behavior of Cultural Heritage: An Applied-anthropological Study of Heritage in Eastern Africa	5,720
Continued	UEBA Yoko	An Anthropological Study on Basketry from the Perspective of Plant Ecology and Craft Skills	3,250
Continued	SUEMORI Kaoru	Multiple Verification on Visual Characteristics of Patterned Thousand Buddha Image Depicted in Mogao Grottoes, Dunhuang, China: through Originally Reproduction and Virtual Grotto Space	3,900
Continued	TERAMURA Hirofumi	Archaeological Research on the Formation of Silk Road Cities and East-west Exchange of People and Cultures	3,640
Continued	NIWA Norio	Resilience of Post-conflict Societies: Analysis of Social Capital and Migrant Networks of Minorities in Oceania	2,730
Continued	UDA Shuhei	Elucidation of Cormorant Fishing as Cultural System and Co-creation of Optimal Inheritance Route in the Era of Animal Welfare.	1,300
Continued	IKEYA Kazunobu	Re-evaluating African History through the Study of Ornament Culture	3,380
New	SAITO Akira	A Digital Humanities Approach to the Tasas: Spanish Colonial Rule and Native Andean Society	2,600
New	SONODA Naoko	A New Technique for Extending the Life Span of Degrading Acidic Papers	4,550
New	YOSHIDA Kenji	Anthropological Study of Immurgence of Culture in the Midst of Social Crisis in Africa	4,160
New	TAKEZAWA Shoichiro	The Anthropology of Vulnerability: How Can We Talk about People Vulnerable to Sufferings	4,550
New	SUZUKI Motoi	Anthropological Study of Latin American “Arte Popular”	4,420
			Total 47,320
Grant-in-Aid for Scientific Research (C)			
Continued	NAKAMICHI Shizuka	The Thousand and One Nights from Manuscript to Print: Textual and Historical Studies	650
Continued	KAWASE Itsushi	The Applied Anthropological Study on the Ethnographic Filmmaking on Intangible Cultures in Africa	650
Continued	HIRAI Kyonosuke	An Anthropological Study of the Genesis of ‘Negative Heritage’ in the Post-Conflict Era of Minamata City	520
Continued	SUZUKI Nanami	Development of Lifelong Learning Sharing Life Stories of Older Adults with Dementia by Intergenerational Collaboration in the US	1,300
Continued	OKAMOTO Naoko	Research about the Writing Process of J.-C. Mardrus by Analysis of One of His Unpublished Manuscripts	780
Continued	SAGARA Keiko	Historical Semantic Change in Japanese Sign Language, Taiwan Sign Language and Korean Sign Language	780
Continued	TOKITA Yumiko	Transformation of Intimate Spheres in India: Emotions and Experiences of Love, Marriage and Family	1,690
Continued	NAKAMURA Marie	The Process of Transformation of Archaeological Artifacts into Valuable Antiquities: A Cultural Anthropological Study of the Ban Chiang World Heritage Site	1,040
Continued	MIO Minoru	Anthropological Study on Religious Practice and Formation of Locality in a Western Indian Town	1,430
Continued	ICHINO Shinichiro	Introduction Pathways and Range Expansion Process of Tamarind in Madagascar: An Approach by using DNA Polymorphism Analysis	1,170
Continued	SUZUKI Hideaki	Historical Ethnography on Slavery in the Early 20th Century Persian Gulf	910
Continued	OTA Shimpei	Ethnographic and Statistic Approaches to Work Ethic and Motivation of Museum Employees	1,170
Continued	MORI Akiko	An Ethnographic Study of Neighborhood Seen from the Practice of Care in Berlin	910
Continued	GAO Qian	The Generation Process of Ethnic Art: Cultural Resource and Tourism of Tompa Culture in Lijiang, Yunnan Province, China	910
Continued	OKADA Emi	Traditional Polyphony and Singing Culture in Northeast India	1,040
New	SASAHARA Ryoji	Research on the Formation of Migrant Societies and the Tradition of Festivals and Performing Arts on the Islands of Japan since the Meiji era	1,040
New	KURODA Kenji	Global Scale of Industrial Production and Economic Integration between Modern Japan and the Middle East	1,040
			Total 17,030

Category	Head	Research Subject	(Thousands of yen)
Grant-in-Aid for Young Scientists			
Continued	KAMINO Chie	Modern Changes of House Purifying Performing Arts in Japan and Korea: Mainly Focused on Japanese Ise-daikagura and Korean Nong-ak	520
Continued	HAYAKAWA Mayu	An Anthropological Study of the Counting and Accounting System among the Zimbabwean Peddlers in the Kingdom of Lesotho	1,170
Continued	NARA Masashi	An Anthropological Study of Religions and Mobilities: Transnational Muslim Networks in Contemporary China	780
Continued	YAGI Yuriko	A Study on Devotion and Religiosity of Andean People: Focus on Votive Offering and Church Documents	1,300
Continued	KUDO Yumi	Anthropological Study on Ethno-medical Practices among Mapuche Organizations in Chile	910
Continued	ITO Satoru	Poetic Orality and Everyday Aesthetics: Comparative Study of Oral and Literal Culture in Tai Cultural Area	1,040
New	UEHATA Fumi	Ethnic Identity Development and Keyboard Instruments in Serbia	1,300
New	KIM Yujin	Cultural Politics of Popular Music and the Military in Indonesia	650
			Total 7,670

Grant-in-Aid for Challenging Research (Pioneering)

Continued	DEGUCHI Masayuki	Interdisciplinary Research on Standardization of Individual Cultures between Anthropology and Accounting	4,810
Continued	ONO Rintaro	Austronesian Migration into Southeast Asia: Interdisciplinary Study of Their Pottery and Burial Tradition	7,930
New	ITO Atsunori	Museum Anthropological Approach to Develop a Source Community Friendly Public Transmission Model on Digital Image of the “Copyrighted” Ethnographic Collection	3,900
			Total 16,640

Grant-in-Aid for Challenging Research (Exploratory)

New	KIKUSAWA Ritsuko	Language Change and Social Norms Reanalyzed through Human Biology	1,300
			Total 1,300

Grant-in-Aid for Research Activity start-up

New	MIYAMOTO Kana	An Anthropological Study of the Revival of Traditional Authorities among Herero-Speaking People in Namibia	1,560
			Total 1,560

Grant-in-Aid for Publication of Scientific Research Results

Continued	KUBO Masatoshi	Digital Archives of Umeshao's Documents	3,800
New	NAKAMURA Yuka	Illness Conversations: Living Diabetes together in Nepal	2,100
New	NAGANO Yasuhiko	rGyalrong – A Comprehensive Grammar –	1,300
			Total 7,200

Grant-in-Aid for JSPS Fellows

Continued	NUKADA Yumi	Ethnographic Research on Indigeneity in Latin America: A Case Study of Costa Rica	1,300
Continued	INAI Hiroyuki	A Study of Community-based Aquatic Resource Management that Takes into Account ‘Outsiders’ in African Inland Waters	1,560
Continued	SAKITA Seishiro	Integrative Study on the Activities and Management of Small-scale Fisheries in East Mediterranean Region	1,690
Continued	NAKAMURA Yuka	Marketization of Modern Medicine in Nepal: Accessibility to Medical Services, Medicine, Body Experiences	1,300
Continued	SAKAGUCHI Nao	Analysis of Collective Memory Formation Process Based on Residents' Narratives of Disaster Remains	1,300
Continued	KUSUNOKI Kazuki	Control of the Transboundary Animal Diseases (TADs) and the Transformation of State Governance in Post-war Kenya	1,300
Continued	KUDO Sakura	Ritual and its Changes among the Low Caste Newar Women: Perspective of Anthropology on Religion	1,300
			Total 9,750

* Found for the Promotion of Joint International Research (Fostering Joint International Research (A)) was allowed between FY2019 to FY2021

Digital Picture Library for Area Studies (DiPLAS)

Image data such as photographs and motion pictures taken during a survey by Japanese researchers around the world constitute academic heritage resources reflecting Japanese scholarly history and research resources in which actual status at particular times is recorded.

This project supports digitization and database compilation of image data accumulated to date for scientific research and funding subsidized projects currently happening in various districts throughout the world. It supports foundations in the future accumulation and sharing of research information.

For adopted projects, photographic, and image data are streamlined, digitized, and compiled into a database. The entry of text information related to image contents is supported to create a platform for digital data to be used for the study. For images that might be made public, international sharing is attempted. Moreover, a foundation for open science is constructed to transcend the confines of the respective fields.

This digital library has been compiled through the project “Integration and Sophistication of Academic Photograph and Video Material Information” using funds from a Grant-in-Aid for Scientific Research on Innovative Areas— Platforms for Advanced Technologies and Research Resources.



Contract Research Projects / Contract Business Projects FY2020

Head	Contractor	Research Theme	(Thousands of yen)
IIZUMI Naoko	Osaka Prefectural Welfare Information and Communication Center Operations Group	A Project Related to Sign Language Interpreter Development Based on the Osaka Prefecture Sign Language Ordinance	1,600
Total			1,600

Research Donations FY2020

Name of the Donation (Reseach Grants for Art-Related Studies)	Head	Donor	(Thousands of yen)
Heiwa Nakajima Foundation, International Academic Research Grants	SEKI Yuji	SEKI Yuji	3,000
Heiwa Nakajima Foundation, Aid for Academic Research in the Asia Region	OKADA Emi	OKADA Emi	1,500
Donation of Shung-Ye Museum of Formosan Aborigines	NOBAYASHI Atsushi	Shung-Ye Museum of Formosan Aborigines	2,500
Total			7,000

Sign Language Linguistics Research Section (SiLLR) FY2020

The section was established to promote sign language linguistics research and outreach activities for the dissemination of research outcomes to universities and society, as well as to build a foundation to promote collaborative research among hearing-impaired researchers through the training sign-language interpreters. Eleven staff members one holds two posts, 3 full-time members, 5 administrative assistants, and 2 visiting research fellows from within Japan (of whom, 3 are deaf persons) have conducted activities such as sign language linguistics research, interpreter development, information distribution, outreach activities, and planning for language exhibitions including sign language. This research department ceased its activities on March 31, 2021 upon expiration of the subsidy period.

Name of grant	Grantor	Period	(Thousands of yen)
Research in Sign Language Linguistics as Promoted by the Sign Language Linguistics Research Section (SiLLR)	The Nippon Foundation	2020.4 - 2021.3	37,150
Total			37,150

Projects Concerning Cultural Resources and Information

Cultural Resource Projects / Information Projects

“Cultural Resource Projects / Information Projects” are based on proposals, and led by our full-time research staff. The aim is to organize and digitize cultural resources held by the Museum and related organizations such as universities, in order to promote their shared use and academic value. The “Cultural Resource Projects” are undertaken in the four areas of survey and collection, artifact management, exhibition, and museum-community alliance. The “Information Projects” are undertaken in the two areas of information gathering, and digitization.

FY2021 List of Cultural Resource Projects

Area	Proposed by	Project Name
Exhibition Development Project	HIDAKA Shingo	Special Exhibition “Local cultures assisting revitalization: 10 years since the Great East Japan Earthquake”
Exhibition Development Project	HIROSE Koujirou	Special Exhibition “Universal Museum”: Exploring the New Field of Tactile Sensation
Exhibition Development Project	SHIMAMURA Ippei	Special Exhibition “100 Years of Mongolia: Encounters through Photography”
Exhibition Development Project	UEBA Yoko	Thematic Exhibition “The Vibrance of Indian Fabrics”
Exhibition Development Project	IKEYA Kazunobu	Thematic Exhibition “Shifting Cultivation from the Perspective of Komei Sasaki: from Itsuki-mura to the World”
Exhibition Development Project	SASAHARA Ryoji	Traveling Exhibition “Toys Expo–Japanese Children in Modern Times: Shimane Museum of Ancient Izumo”
Exhibition Development Project	IKEYA Kazunobu	Traveling Exhibition “Beads from Aynu Mosir to the World: National Ainu Museum”
Exhibition Development Project	YAMANAKA Yuriko	Traveling Exhibition “Regnum Imaginarium: Realm of the Marvelous and Uncanny: Kochi Prefectural Museum”
Exhibition Development Project	YAMANAKA Yuriko	Traveling Exhibition “Regnum Imaginarium: Realm of the Marvelous and Uncanny: Fukuoka City Museum”
Exhibition Development Project	KIKUSAWA Ritsuko	Special Exhibition “ <i>Homō loquēns</i> ‘Talking Human’: Wonders of Language and Languages”
Exhibition Development Project	SUZUKI Motoi	Preparation for the Special Exhibition “Preliminary Research for the Special Exhibition: Latin American Folk Arts: Creativity for Enhancing Cultural Diversity”
Exhibition Development Project	MIO Minoru	Preparation for the Special Exhibition “Preliminary Research for the Special Exhibition: The World of Images of Hindu Deities”
Exhibition Development Project	ONO Rintaro	Preparation for the Thematic Exhibition “Human and Ocean: from Fishing Gears to Ritual Tools in Maritime Asia and Oceania”
Museum Community Alliance Project	NOBUTA Toshihiro	Practical Study on Using the Museum for People with Intellectual Disabilities
Museum Community Alliance Project	YOSHIOKA Noboru	The Project for Building up Partnership between the Museum and Society

FY2021 List of Information Projects

Area	Proposed by	Project Name
Research and Collection Project	ITO Atsunori	Production of the Minpaku Visual Ethnography: “Native American Hopi Textile Artist Reviews the Regalia for the Hopi Social Dance.”
Research and Collection Project	YAMANAKA Yuriko	Production of the Minpaku Visual Ethnography: “Ise-daikagura in Times of the Corona Crisis: Activity Records of Yamamoto-Gendayu Troup”
Documentation and Database Project	HAN Min	Creating Database of Mao Zedong’s Badge

Cultural Resource Planning Projects / Information Planning Projects

“Cultural Resource Planning Projects / Information Planning Projects” are implemented continuously, or in a planned manner, to strengthen the Museum’s jointly used infrastructure. The “Cultural Resource Planning Projects” are undertaken in the three areas of artifact-related, exhibition, and museum-community alliance. The “Information Planning Projects” are undertaken in the two areas of video record production and digitization of exhibitions.

FY2021 List of Cultural Resource Planning Projects

Area	Implementation Manager	Project Name
Artifact Project	HIDAKA Shingo	Taking Pictures of Materials
Artifact Project	The Head of the Information Planning Section	Research Data Organization / Information Conversion and Usage Management
Artifact Project	HIDAKA Shingo	Research Data Organization / Information Conversion and Usage Management
Artifact Project	SONODA Naoko	Research on the Preservation and Management of Tangible Cultural Resources
Artifact Project	HIDAKA Shingo	New Production of Totem Poles (Ceremony, Reports)
Artifact Project	HIDAKA Shingo	Collection of Artifacts (Individual Collection)
Artifact Project	HIDAKA Shingo	Collection of Artifacts (Thematic Collection)
Museum Community Alliance Project	SAITO Reiko	Support for Volunteer Activities
Museum Community Alliance Project	SAITO Reiko	Workshop Hosting and Worksheet Exercises
Museum Community Alliance Project	FUKUOKA Shota	Music Day at Minpaku 2021
Museum Community Alliance Project	SAITO Reiko	<i>Kamuynomi</i> Rite, Traditional Ainu Dances
Museum Community Alliance Project	SAITO Reiko	Revision of the Min-pack “Expedition to the Steppes of Mongolia”
Museum Community Alliance Project	SAITO Reiko	Duplication of the Min-pack “Expedition to the Steppes of Mongolia”

FY2021 List of Information Planning Projects

Area	Implementing Entity	Project Name
Project for Video Production	Committee for Information Management	Making Panoramic Virtual Tours of Special Exhibitions, Thematic Exhibitions.
Project for Video Production	Committee for Information Management	Making Videos of Special Lectures and Performances

National Institutes for the Humanities (NIHU) Transdisciplinary Projects

The National Institutes for the Humanities (NIHU) have coordinated with Japanese and overseas universities, research institutes and communities to manage Transdisciplinary Projects to contribute to resolving the contemporary challenges for six years from the fiscal year 2016. Minpaku is in charge of the following projects:

Multidisciplinary Collaborative Projects: Change of Local Communities and Reconstruction of Community Cultures after Disasters in Japanese Archipelago

Minpaku Unit “Rediscovering Local Cultures and Constructing a System of Representation in the Japanese Archipelago”

Representative: HIDAKA Shingo

The Japanese Archipelago is long from North to South, with residential areas spread over seashore areas, plains, and mountainous areas. This topology has nurtured diverse local cultures, each adapted to its own natural environment. These local cultures have lost some of their unique characteristics in social transformations due to globalization. This has given rise to an impression cultural standardization across all of Japanese society, at least on the surface. In addition, rebuilding after many recent large-scale natural disasters forced communities to relocate, merge, or otherwise reorganize themselves, reconstructing their local cultures that had been passed down across generations. In this research, we focus on local cultures and identify what cultures are passed down and new cultures being constructed. We discuss how studies of human cultures can contribute contribution to the society now and into the future.

More specifically, we are pursuing three research themes namely, “Rediscovery of Local Cultures,” “Conservation of Local Cultures,” and “Utilization of Local Cultures.” Our aim is to rediscover local cultures that are buried under the surface at ordinary times, and to build a system that represents local cultures in a way that is meaningful for community residents and the external society.

Multidisciplinary Collaborative Projects, New Developments in Ecohealth Research in Asia

Minpaku Unit “The Constellation of Food and Foodways in Human and Natural History”

Representative: NOBAYASHI Atsushi

The purposes of our project are to research the social function and the history of food and foodways of humans, and to study the principles of coexistence and conflict concerning food among them. We recognize the concept of food and foodways as being a cultural system in human and natural history. Food is indispensable to the maintenance of life, and foodways is embedded deeply in culture and economy. Knowing the mass production and disposal of food, world population growth and the increasing numbers of those existing at starvation levels, we can see that food and foodways in modern society is far from being ecologically adaptive.

Food issues will be connected in a multidisciplinary human ecological perspective that examines the function of food, and natural history, which examines the role of food in human societies. It will develop a model of food and foodways in the human future.

This work is a part of the “New Developments in Ecohealth Research in Asia” project, promoted and led by the Research Institute for Humanity and Nature. “Ecohealth” is a new approach to the concept of “health,” which has been analyzed previously from a medical perspective. We shed a new light on the relationships among livelihood, living environment, and occupations, dietary habits in the modern era of rapid social transformation, and environmental change.



Restoration of local traditional cultural assets damaged in natural disasters



Family diet that promotes health (China)

Network-based Projects: Northeast Asia Regional Structure and Its Change in Northeast Asia: in Search of the Way to Coexist from the Point of View of Transborderism

Central hub for the study project covering
“The Structure of Natural Environment and Cultures / Civilizations”

Representative: IKEYA Kazunobu

The Center for Northeast Asian Area Studies at the National Museum of Ethnology (Minpaku) consists mainly of the researchers working in cultural anthropology, ethnology and adjacent domains within Minpaku, and archaeological researchers of its partner institution, National Museum of Japanese History. The Project focuses on the movement of people and exchange of materials, introduce and influence of the political and economic systems in Northeast Asia, and to clarify the structures and transformations of the natural environment, cultures, and civilizations from prehistory to the present.

Northeast Asia for the purpose of the Project refers to the vast area covering Siberia and Far East Region of Russia, Mongolia, Korean Peninsula, China, and Japan. Up until now, researches have been done within the framework of each nations, but this project is a novel attempt to comprehend the region as a whole.

As central hub, the Center promotes the Project in partnership with other organizations, namely, Slavic-Eurasian Research Center/ Hokkaido University, Center for Northeast Asian Studies/ Tohoku University, Center for Far Eastern Studies / University of Toyama, Institute for North East Asian Research/ The University of Shimane, and Waseda Institute of Contemporary Chinese Studies/ Comprehensive Research Organization of Waseda University.

Network-based Projects: Modern Middle East Towards a Pluralistic and Multi-Valued Society: People and Cultures of the Middle East in the Age of Global Change

Central hub for the study project covering
“The Transformation of Cultural Resources and the Reconfiguration of the
Personal Sphere in the Modern Middle East”

Representative: NISHIO Tetsuo

The Area Studies Project for the Modern Middle East aims to develop new methodologies for Middle East Studies that would allow us to conceptualize the ways in which individuals related to the world. In the age of the global transformation of nature, society, and media, how do the individuals of the Middle East obtain information, accumulate knowledge as well as utilizing them as resources? We strive to examine the resocialization of individuals in relation to the ways in which they create their social spaces through inclusion and exclusion of multiple values.

Our center was established in April 2016 as a central hub to coordinate the project and investigates on the topic of “The Transformation of Cultural Resources and the Reconfiguration of the Personal Sphere in the Modern Middle East.” Personal encounters with unknown people, places, and information play an important role in shaping the life-worlds of those who live in the Middle East. We try to clarify the attributes of this personal sphere: 1) where does the boundary between the personal and the public lie? 2) how do personal spheres connect to form communities or world views? 3) in what ways do cultural resources reflect the reconfiguration of the personal sphere? In the course of this 6-year project, we will send research missions, host foreign researchers, conduct international symposia, develop learning kits, plan exhibitions, and publish our results in collaboration with our partner institutions.

Network-based Projects: South Asia Structural Transformation in Globalizing South Asia – Integrated Area Studies for Sustainable, Inclusive and Peaceful Development

Secondary hub: Research Topic “South Asian Cultures and Societies”

Director : MIO Minoru

The South Asian region is currently undergoing significant transformation due to rapid economic development, which aggravates a range of existing socio-cultural, economic, and political problems while also giving rise to new ones. International tensions within the region and beyond are also increasing. In the context of accelerated globalization, Japan cannot ignore such tensions. This project aims to encourage solution-oriented approaches to the real world problems through the network of research centers at Kyoto University, National Museum of Ethnology, University of Tokyo, Hiroshima University, Tokyo University of Foreign Studies, and Ryukoku University.

The center at the National Museum of Ethnology functions as the secondary hub, especially advancing the international activities of this project. We are also attempting to delineate characteristically South Asian forms of social resilience by understanding the dynamics of the global circulation of people, cultures, and values, as well as by analyzing the particular characteristics of South Asian social relationships that have been maintained amidst rapid social change. Through this research, we intend to contribute to the academic and social discourse on the social risks resulting from meteoric globalization.



Mongolian livestock farmers living with livestock



Sindbad, a fresh juice store in Cairo, Egypt



General discussion in the Third International Symposium of the Asian Consortium of South Asian Studies (ACSAS) (November 23, 2019, National University of Singapore)

Individual Research Projects

FY2021 Research Theme

Director-General

YOSHIDA Kenji	Study of Creation, Transmission, and Representation of Culture: A Museum-anthropological Approach
---------------	---

Department of Advanced Human Sciences

OKADA Emi	Traditional Polyphony and Singing Culture of Naga Tribes in Northeast India
	Modern Transmission of Hindustani Classical Music
KAWASE Itsushi	The Study on Theory and Practice of Ethnofiction
KIKUSAWA Ritsuko	Application of the Geographic Information System (GIS) to the Historical Analyses of Fijian Languages
SASAHARA Ryoji	Possibility of the Multimedia Program “Song and Dance and Festival of Tokunoshima” as the Ethnography of the Performing Arts and the Festival
SUEMORI Kaoru	Assessment of Museum Storage Environment: Possibilities and Issues on Passive Environment
SONODA Naoko	Integrated Collection Management of Ethnological Collection
HIDAKA Shingo	Rediscovery of Regional Culture and Construction of the Representational System
HIRANO Chikako	A Review of Anthropological Studies on Indigenous Drinking
MARUKAWA Yuzo	Research of Information Service for Cultural Assets based on Informatics of Association
YOSHIOKA Noboru	Descriptive Linguistics for Northern Pakistan Languages

Department of Cross-Field Research

UDAGAWA Taeko	Reconsideration and Reconstruction of the Public and the Intimate
OTA Shimpei	Integration and Variation of Socio-cultures in Korea
KASHINAGA Masao	Scripts and Texts of the Tai Dam in Vietnam
HAN Min	Anthropological Research on Society, History and Symbols
SHINMEN Mitsuhiro	The Thought and Strategy of Mircea Eliade and Emil Cioran through Exile
SUGASE Akiko	Identity Representation and Nationalism of Religious Minorities in Eastern Mediterranean Arab Countries
NARA Masashi	An Anthropological Study of Religions and Mobilities: A Case Study of Hui Muslims in Contemporary China
HAYASHI Isao	Mediums in Recollecting Disaster Experience : Remains, Monuments, Narratives
MATTHEWS,Peter J.	Ethnobotany and Prehistory in Asia and the Pacific
MATSUO Mizuho	The study on Substance Theory and the Concept of Race in South Asia
MINAMI Makito	Impact of COVID-19 on Nepalese Migrant Workers

Department of Modern Society and Civilization

IKEYA Kazunobu	A Study on Sedentarization and Social Transformation of Hunter-Gatherers
ITO Atsunori	Practical Research on Indigenizing Anthropology Museums
UEBA Yoko	A Comparative Study of Handicraft Culture
UDA Shuhei	Relationship between Birds and Humans
SAITO Akira	A Comprehensive Study of the Viceroy Toledo’s General Resettlement in the Colonial Andes
SAITO Reiko	The Movements and Interchanges of People and Things in the Ainu and their Neighbors
SEKI Yuji	Studies on the Formation of Power in the Ancient Andes
FUKUOKA Shota	A Study on Influences of Audiovisual Media on Traditional Performing Arts
FUJIMOTO Toko	Anthropological Study on Society and Religion in Central Asia
YAMANAKA Yuriko	Comparative Study of Marvels and the Uncanny: Human Imagination and the Natural World

Department of Globalization and Humanity

AISHIMA Hatsuki	Aesthetics and Body Culture in Contemporary Egypt
SUZUKI Nanami	Aging-friendly Communities in Super Aged Societies: Exploring Diverse Interaction for Aging in Place
SUZUKI Hideaki	Western Indian Ocean World in Move
CHE Sohee	Medicinal Food Understanding in Korean Culture : with Cases of the Use of Mugwort in Folk Medicine
NAKAGAWA Osamu	Anthropological Study on Hmong Refugees and the State in France
NISHIO Tetsuo	Globalization and Popular Cultures in the Middle East
NIWA Norio	The Anthropology of Support
NOBUTA Toshihiro	An Anthropological Study on Indigenous Peoples in Malaysia
	An Anthropological Study on Inclusive Society
HIRAI Kyonosuke	An Anthropological Study of the Genesis of ‘Negative Heritage’ in the Post-Conflict Era of Minamata City
MIO Minoru	Anthropological Study on Transformation of Religion and Culture in Western India
YAGI Yuriko	A Study on the Offering and Religiosity of Contemporary Andean People

Center for Cultural Resource Studies

IIDA Taku	Theoretical Reconsideration of the Concept of Cultural Heritage with Special Reference to its Dynamism
ONO Rintaro	Island Adaptation, Burial Practices, and Maritime Culture by Homo Sapiens in the Ryukyu, Southeast Asia and Oceanian Islands
KAMINO Chie	Modern Changes of House Purifying Performing Arts in Japan and Korea: Mainly Focused on Japanese Ise-daikagura and Korean Nong-ak
KISHIGAMI Nobuhiro	An Ethnological Study of Cultural Changes among Northwest Coast Peoples in North America
SHIMAMURA Ippei	The Interdisciplinary Research on the Glocal Practices of Mongolian Buddhism
SUZUKI Motoi	Comprehensive Study of Latin American Collection in MINPAKU
TERAMURAHirofumi	Research on the Formation of Ancient Silk Road Cities and East-West Exchange of People and Cultures.
NOBAYASHI Atsushi	A Cross-cultural Study of the Dietary Habits of Hunter-gardeners
HIROSE Koujirou	An Anthropological Study of the Concept of “Barrier-Free”
MISHIMA Teiko	A Theoretical Study on the Plural Significance of Ethnic Culture-From the Transformation of Merchant Migrants Society
MORI Akiko	An Anthropological Study on the Meaning of the Social and its Universality across Cultures

Dissemination of Research Findings

Note: Those with no venue cited were held in the Museum.

The Museum promotes active dissemination of research findings, via symposia, research forums, and participation of staff in international academic meetings using the “Research Results Presentation Program” under the Director-General’s Leadership Program. Using various external funds, the Museum has conducted numerous symposia and forums in FY2020 (see below). For information about Minpaku Special Research Projects symposia and forums, please see p. 8. and 9.

Hornors and Awards

Award recipient	Date	Awards
SUZUKI Hideaki	July 22, 2020	The 35th Daido Life Foundation Incentive Award for Area Studies for “Comprehensive Study on Mobilities of the Western Indian Ocean World”
ITO Atsunori	November 21, 2020	Collaborative Research Category of the 10th Japan Consortium for Area Studies Award for “RECONNECTING Source Communities with Museum Collections Project”
SEKI Yuji	December 17, 2020	The Commendation from the Commissioner for Cultural Affairs
UEBA Yoko	July 27, 2021	The 36th Daido Life Foundation Incentive Award for Area Studies for “A Comparative Study of the Textile Culture in Contemporary India”
ONO Rintaro	July 27, 2021	The 36th Daido Life Foundation Incentive Award for Area Studies for “Archaeology and Anthropological Study of Marine Resources Use by Human in Island Southeast Asia”
KAWASE Itsushi	July 27, 2021	The 36th Daido Life Foundation Incentive Award for Area Studies for “Pioneering New Fields of African Area Studies through Innovative Production of Ethnographic Films”
KAWASE Itsushi	December 21, 2021	Art and Literature Category of the 43th Suntory Prize for Social Sciences and Humanities for “ <i>Singer Poets in the Ethiopian Highlands–The People Who Live by Singing</i> ” ONGAKU NO TOMO SHA
Professor Emeritus ISHIGE Naomichi	November 3 ,2021	Person of Cultural Merit Award

Public Academic Lectures

The Museum organizes public academic lectures in Osaka and Tokyo. These facilitate cross-cultural understanding and help to increase public recognition of the Museum.

Public Lecture

“The Challenge of Fantasy: On Imagination and the Truth beyond Language”

Date	November 6, 2020
Venue	Nikkei Conference Room (Osaka) with online streaming
Lecturers	NISHIO Tetsuo MORIMI Tomihiko
Moderator	AISHIMA Hatsuki
Attendance	619
Co-host	NIKKEI INC.



Public Lecture

“Budo and the Middle East in a Globalizing World”

Date	March 19, 2021
Venue	Oval Hall (Osaka) with online streaming
Lecturers	AISHIMA Hatsuki OGURA Takayasu BENNETT Alexander KAWAI Hironao
Moderator	
Attendance	301
Co-host	Mainichi Newspapers



Symposia

International Symposium

“Laws, Accounting and Culture for Non-Profit Organizations in East Asia: Universality and Individuality”

Date	August 28, 2020 (online)
Coordinator	DEGUCHI Masayuki
Fund	Research Results Presentation Program
Participants	41

International Symposium

“The 9th Meeting of Signed and Spoken Language Linguistics”

Date	September 25 - October 4, 2020 (online)
Coordinator	KIKUSAWA Ritsuko
Fund	The Nippon Foundation
Participants	672

Serial Academic Webinars

“Minpaku Special Research Project, “Humanity and Communities in Cultural Heritage in the Age of Digital Technology”, “Cultural Transmission against Collective Amnesia: Bodies and Things in Heritage Practices””

Date	February 13,2021 - March 13, 2021 (Five times) (online)
Coordinator	IIDA Taku
Fund	Minpaku Special Research Projects
Participants	474

Publication of Research Results FY2020

Publications by the Museum

Bulletin of the National Museum of Ethnology

The Bulletin of the National Museum of Ethnology is a research journal that contribute to the advancement of ethnic studies and cultural anthropology. It publishes articles, book reviews, documentary materials, and research notes related to ethnic studies, anthropology, and related fields. Published four times a year.

Vol. 45, No. 1	Article UDA Shuhei, <i>A Cormorant Fishing Technique and Its Subsistence Conditions in the Former Yugoslavia: A Case Study of Mandra Fishing on Dojran Lake, North Macedonia</i> Research Note KAWAI Hironao, <i>Foodscape: A New Trend of “Food Landscape” in Anthropology and Its Related Academic Fields</i> Research Resource CLIFFORD James, Atsunori ITO, Reiko SAITO, Kenji YOSHIDA, Isao HAYASHI, and Taku IIDA, <i>International Symposium “Future of the Museum: An Anthropological Perspective”</i>
Vol. 45, No. 2	Article KASHINAGA Masao, <i>Creation of the Tai Dam Scripts in Vietnam</i> Special Theme Anthropology of Collaborations and Processes: From Studies of Contemporaneous Art Practices NOBORI Kukiko and Mei KANEMATSU, <i>Introduction</i> Articles NOBORI Kukiko, <i>Inalienability of Artworks: Participatory Art and Its Production</i> NISHIO Yoshinari, “Art” Born from the Relationship between Artists and Non-artists: Practice of <i>Self Select: Nairobian in Tokyo</i> NIWA Tomoko, <i>Reflection on the “Window-Flowers” Exhibition: Video and Art Installations as Practical Expressions in Anthropology</i> YAMAKOSHI Hidetsugu, <i>Aiming at “Living World Decolonization” by Art: Oaxaca’s Popular Holy Statue Worship and Resonance of “Actuality”</i> KANEMATSU Mei, <i>Figure–ground Reversal of Art Projects: Thinking from the Process of a Rice Paddy Field Becoming a “Rice Terrace” or “Art”</i>
Vol. 45, No. 3	Articles YOSHIOKA Noboru, <i>Nominal Echo Formations in Kati: In the Context of Languages of Northern Pakistan</i> PENG Yujie, <i>Residence Patterns of Hunter-gatherers after Settlement Inferred from Individual Migration Histories: The Case of the Baka in Southeastern Cameroon</i> SAMOTO Hidenori, <i>Bamboo Panpipes in Processes and a Makeshift Recording Studio: Musical Mediation over Indigenous Instruments in ‘Are’are, Solomon Islands</i> Research Note KONAGAYA Yuki, <i>Expedition Photographs of Mongolia (1880–1930)</i>
Vol. 45, No. 4	Article HIRAI Kyonosuke, <i>Genesis of a Museum Movement: Soshisha and Transformation in the Minamata Disease Movement</i> Field Research Resource KISHIGAMI Nobuhiro, <i>New Totem Pole Made by Bill Henderson for the National Museum of Ethnology, Japan</i>

Senri Ethnological Studies (SES)

Senri Ethnological Studies presents individual works, article collections, and annotated bibliographies regarding specific peoples, regions, or themes, with the goal of publicizing in Japan and overseas the results of research conducted by the Museum. An occasional publication.

No. 103	NOBAYASHI Atsushi and Scott SIMON (eds.), <i>Environmental Teachings for the Anthropocene: Indigenous Peoples and Museums in the Western Pacific</i>
No. 104	KISHIGAMI Nobuhiro (ed.), <i>World Whaling: Historical and Contemporary Studies</i>
No. 105	HEMETEK Ursula, Inna NARODITSKAYA, and Yoshitaka TERADA (eds.), <i>Music and Marginalisation: Beyond the Minority-Majority Paradigm</i>
No. 106	IKEYA Kazunobu and Yoshihiro NISHIAKI (eds.), <i>Hunter-Gatherers in Asia: From Prehistory to the Present</i>

Senri Ethnological Reports (SER)

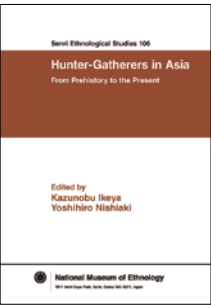
The purpose of Senri Ethnological Reports is to publicize as quickly as possible the results of research conducted by the Museum’s faculty, cooperating faculty, and research fellows. SER publishes the results of field investigations regarding specific peoples, regions, or themes that require preliminary reports, as well as items of a source material nature such as bibliographies and data collections. Published in Japanese and other languages. Occasional publication.

No. 151	KONAGAYA Yuki and Natalia SIMUKOVA (comps.), <i>Explorer of Mongolia A.D.Simukov: Letters, Diaries, Documents</i>
No. 152	CASAJUS Dominique, Tetsuo NISHIO, François POUILLON, and Tsuyoshi SAITO (eds.), <i>On the Notion of Popular Culture in the Middle East: The Intersection between Japanese and French Approaches</i>

TRAJECTORIA

TRAJECTORIA is an international multimedia peer-reviewed journal situated at the intersection of anthropology, heritage studies, museum studies, and the arts. It is published annually online by the National Museum of Ethnology.

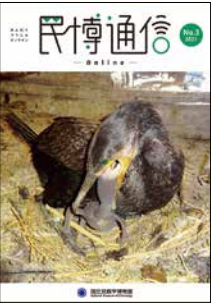
Vol.2	Special Theme Confronting Museums: Collaboration, Reception, and Experiment in “Tabuluja (Wake Up!)” and “New York, just another city” LEAHA Mihai Andrei, <i>Introduction</i> HIKIJ Rose Satiko Gitirana, Jasper CHALCRAFT, and Shambuyl WETU, <i>Tabuluja (Wake Up!)</i> LOPES André and Joana BRANDÃO, <i>New York, just another city</i> LEAHA Mihai Andrei, Rose Satiko Gitirana HIKIJI, Jasper CHALCRAFT, André LOPES, and Joana BRANDÃO, <i>Discussion: Dialogue over Time: Reception, Improvisation, and Mediation in Collaborative Ethnographic Filmmaking</i> Film SU Hung-En, <i>Muakai’s Wedding</i> TSAI Futuru C. L., <i>Lives and Deaths between Ebbs and Flows</i> Article HU Tai-Li, <i>The Taiwan International Ethnographic Film Festival and the Rise of Indigenous People Documentaries in Taiwan</i> Carte Blanche VAN. DIENDEREN An, Rosine MBAKAM, and Thomas BELLINCK with a first guest contribution by Hugo DEBLOCK, <i>The Museum of Mental Furniture</i>
-------	--



Minpaku Tsushin Online

Minpaku Tsushin Online is a magazine that describes the academic characteristics and unique features of and achievements resulting from individual research projects conducted at the Museum in a manner that is comprehensible to researchers and the general public. The magazine launched online publications in FY2019 and has published electronic books.

No.2	Final Report NIHU Transdisciplinary Project Re-examination and Documentation of the Ainu Collection at Minpaku SAITO Reiko, <i>First Step Is the Launch of the Database</i> NIHU Transdisciplinary Project Building an Info-Forum Database for the Asaeda Toshio Collection Focusing on His Oceania Ethnography NIWA Norio, <i>Key Features of the Database “Toshio Asaeda Collection” and Its Remaining Issues</i> NIHU Transdisciplinary Project Building an Info-Forum Database for Audiovisual Records of the Gandharba Community, Nepal MINAMI Makito, <i>Sharing Sarangi Music of the 1980s</i> NIHU Transdisciplinary Project Building an Info-Forum Database for Cultural Collections of Central and South America YAGI Yuriko, <i>Aiming to Build up the Connection beyond Time and Space</i> Minpaku Special Research Project Human and Natural History on System of Food Production NOBAYASHI Atsushi, <i>Thinking the Time and Context in Which Food and Foodways Come into Being</i> Inter-University Research Project Anthropological Study of Reconstructing End-of-Life Care Culture in Contemporary Japan UKIGAYA Sachiyo, <i>Anthropology of Death and Dying: Toward Reconstructing End-of-Life Care Culture</i> Inter-University Research Project Whaling and Environmental Ethics KISHIGAMI Nobuhiro, <i>Consideration on World Whaling</i> Inter-University Research Project In Search of Interacting Musicking Body: An Interdisciplinary Approach NOZAWA Toyochi, <i>Musicking Studies Expands</i> Inter-University Research Project Comparative Studies of Afro-Eurasian Material Culture from the Perspective of Moving Strategies in Desert Societies NAWATA Hiroshi, <i>Adaptive and Moving Strategies in Desert Societies: According to the Analysis of Traditional Costumes and Houses of the Arabian Peninsula</i> Inter-University Research Project Interdisciplinary Study of Physical Techniques Using Technology HIRATA Akiko, <i>Update on Body Technique Theory in the Era of Coexistence with Information and Communication Technology</i>
No.3	Start Up NIHU Transdisciplinary Project Internationalization and the Development of Interdisciplinary Studies on Database of “Yakihata (Swidden Fields) - The SASAKI Komei Collection” IKEYA Kazunobu, <i>Exhibition “Slash-and-Burn Cultivation Viewed by SASAKI Komei” Held in Itsuki Mura, Kumamoto Prefecture: Exploring the Possibilities of Forum-Type Exhibitions</i> NIHU Transdisciplinary Project Cultural Heritage Sites Possessing Memories of Tsunamis: Database of Temples/Shrines and Stone Monuments: Enhancing the Database for the Info-Forum Museum HIDAKA Shingo, “Cultural Heritage Sites Possessing Memories of Tsunamis: Database of Temples/Shrines and Stone Monuments” as a Database for the Info-Forum Museum NIHU Transdisciplinary Project Information Reinforcement Based on Video Recordings of Various Ethnic Cultures in Senegal MISHIMA Teiko, <i>Construction of Video Database of the Soninke Culture Week</i> Inter-University Research Project A T-shaped Interdisciplinary Approach to Cormorant Fishing Culture in Japan UDA Shuhei, <i>Wildness Connected with Power: The Case Study of Cormorant Fishing Culture</i> Inter-University Research Project A Study on the Transformation of Food/Foodways Related to Wars and Imperialism: Rethinking the Relationship between Food/Foodways and the Nations UDAGAWA Taeko, <i>Various Aspects of the Relationship between War and Food</i> Inter-University Research Project Toward a New Perspective for Japan Studies Reflecting Overseas Field Experiences KATAOKA Tatsuki, <i>Toward an Anthropology “Back Home”</i> Inter-University Research Project Interdisciplinary Comparison of Historical Change, Current of State, and Future of Indigenous Societies along the North Pacific Rim: From a Perspective of Human History KISHIGAMI Nobuhiro, <i>A Plan for a Comparative Study of Indigenous Societies along the North Pacific Rim</i> Inter-University Research Project Comparative Study on the Influence of International Development on Menstruation: From the Perspective of Gender and Medicalization SHINMOTO Mariko, <i>The Impact of Menstrual Hygiene Management (MHM) on the Local View of Menstruation and Women's Body</i> Inter-University Research Project Exploring an Alternative Notion of Community in Uncertain Times: Contingent Arrangement of Material, Institutional, and Body Settings MORI Akiko, <i>About a Perspective of the Place Where Humans and Things Interact</i> Inter-University Research Project The Anthropology of the “Depicted Animals”: Focusing on the Becoming in Animals and Humans YAMAGUCHI Mikako, <i>Rethinking “Humans and Animals” through Animal Depictions</i> Inter-University Research Project Relationships between Indigenous Peoples and Information Societies KONDO Shiaki, <i>Toward Indigenous Studies in the Digital Age</i>



Publications outside the Museum

KAWADA Makito, Chihiro SHIRAKAWA, and Taku IIDA (eds.), *Magic in the Contemporary World: Anthropological Approach*, Shunpusha
KISHIGAMI Nobuhiro (ed.), *Between Whaling and Anti-Whaling: World Whaling and Its Political and Ethical Issues*, Rinsen Book
NIWA Norio (ed.), *Anthropology of Cheering*, Seikyusha
MATSUKAWA Kyoko and Yoshitaka TERADA (eds.), *Circulation of “India” as Cultural Gyre around the World: An Anthropological Study of South Asian Performing Arts That Change in the Age of Globalization*, Seikyusha
DEGUCHI Masayuki and Hideki FUJII (eds.), *Transformative Research of Accounting and Anthropology*, Shimizu Kobundo
NAGATANI Chiyoko, Yusuke BESSHO, Yukihiro KAWAGUCHI, and Toko FUJIMOTO (eds.), *Anthropology of Religiousness: What Do People Wish for at the Edge of Modern Days?*, Hozoukan



Minpaku Repository

Using JAIRO Cloud (shared repository service) of the National Institute of Informatics (NII), the Minpaku Repository allows open access to its own publications, Senri Ethnological Studies, Senri Ethnological Reports, Bulletin of the National Museum of Ethnology, Senri Ethnological Research Reports Supplements, Minpaku Tsushin, an electronic journal TRAJECTORIA, and authorized theses and dissertations that were published outside of Minpaku. As at the end of FY2020, the total number of publications in the repository was about 5,757. The average number of paper downloads was about 42,334 per month.

Joint-Use Facilities for Scientific Research

Purpose of establishment

The museum has nondestructive testing and material analysis equipment systems to conduct primary analysis of folklore materials, cultural assets, and museum materials. The facilities was established in December 2017 to promote the active use of the systems by various organizations and researchers in cultural anthropology and relevant disciplines in its peripheral domains thereby contributing to increased joint use in scientific researches.

List of equipment

- X-ray CT scanning system
- 3D printer
- Three-dimensional measuring system
- Pyrolyser gas chromatograph - mass spectrometer
- Ion exchange chromatograph
- X-ray fluorescence spectrometer
- Temperature and humidity chamber
- Fourier transform infrared spectrophotometer (FT-IR)
- Digital microscope



X-ray CT Scanning System



3D Printer

Records of Use

2018

Records of Use	Organizations that used the facilities
9 cases	National Institutes for Cultural Heritage, Kyoto University of Art and Design, Mitsui Memorial Museum, Siga Prefectural Board of Education, Nagahama Castle Historical Museum, Hino Town Board of Education, etc

2019

Records of Use	Organizations that used the facilities
13 cases	Hitotsubashi University, Hokkaido University, Tenri University Sankokan Museum, Otsu City Museum of History, Kesennuma City Board of Education, Maibara City Board of Education, Daitokuji Temple, NouHakusan Shrine, Jinne-in Kannonji temple, UmamiokaWatumuki Shrine, etc

2020

Records of Use	Organizations that used the facilities
8 cases	Kanazawa Gakuin University, The Museum of Kyoto, Tenri University Sankokan Museum, Iwate Prefectural Government Department of Culture and Sports Culture Promotion Division, Daitokuji Temple, NouHakusan Shrine, UmamiokaWatumuki Shrine, Itoigawa City Board of Education, etc



Examination Using X-ray CT Scanning



Examination Using X-ray Fluorescence Spectrometer

How to use

Please contact the Artifact Management Unit of the Information Planning Section if you are interested in using the systems.

Artifact Management Unit of the Information Planning Section

TEL +81-6-6878-8392

FAX +81-6-6878-8242

Mail hyohons@minpaku.ac.jp

Minpaku Library

Service Information

Daily from 10:00 a.m. to 5:00 p.m.(Entry permitted until 4:30 p.m.), except Sundays, National Holidays, and days that the Museum is closed.

Visitor qualifications: The library is open to all. The library card is required for lending books. Some materials may not be available.

URL <https://www.minpaku.ac.jp/sharing/library>

1. Encouraging Educational and Research Activities

Minpaku’s library collection includes many highly specialized works. Facilities include four microfilm readers and a color copy service. The library is staffed by qualified librarians and provides full support for the educational and research activities expected of an Inter-University Research Institute.

2. Promoting Public Access to the Library Catalog through the National Institute of Informatics

In FY2020, printed materials in 20 languages were cataloged, and the repository’s holdings reached 636,767 volumes.

Under the NACSIS-CAT (a comprehensive national database of general indices) Retrospective Entry Project, 2,687 microfiche records (books 2,562 items and 125 articles of 4 titles of newspapers/magazines) were entered. With this, 98% of Minpaku’s library data have now been entered.

3. Social Contributions

All users can check out books from the library. As of FY2020, the library had 155 outside registered users making regular use of the library, who borrowed 1,076 items.

4. MINPAKU Library Catalog

The library catalog is open to the public and can be searched by anyone, anywhere from a personal computer or mobile phone. In FY2020, the catalog was accessed from computers 1,739,933 times and from mobile phones 217 times.



Library Reception Counter



Current Periodicals Section



Neatly Archived Materials

Ethnology Research Archives

Since its establishment, the Museum has accumulated a wide range of resources, like research notes and papers of anthropologists and ethnologists, including audio-visual records from their fieldwork. To make good use of these materials, the Archives group under Information Management Committee continued in FY2020 to investigate the condition of archive resources and to develop inventory lists. The Museum will investigate continuously the condition of archive resources and develop and digitalize inventory lists, with the aim of making them open to public.

- AOKI Bunkyo Archive
 - ISHIGE Naomichi Archive
 - IZUMI Seiichi Archive
 - IWAMOTO Kimio Archive
 - UCHIDA Isao: East Asian Culture Archive Mainly for Taiwan and Japan in 1930s
 - UMESAO Tadao Archives
 - EGUCHI Kazuhisa: AfricaAsia Language Archive
 - OUCHI Seiko Archive
 - OKI Morihiro Archive (Indian Ethnological Cultural Resource Archive)
 - KATSURA Yonenosuke Archive
 - KANO Tadao Archive
 - KIKUCHI Nobuyuki Archive
- KIKUZAWA Suelo Archive
 - KURITA Yasuyuki and BEFU Harumi: Japanese Gift-giving Archive
 - KOBAYASHI Yasuyoshi: Southern Taiwan Indigenous People Archive
 - SHINODA Osamu Archive
 - SUGIURA Kenichi Archive
 - The Japanese Scientific Expedition for Nepal Archive
 - HIJIKATA Hisakatsu Archive
 - MABUCHI Toichi Archive
 - MARUTANI Akira: Kutsugi Village Harihata Life Data Archive
 - “Regional Typology of Japanese Culture Study Group” Archive

UMESAO Archives

April 2013 saw the creation of the Umesao Archives, where the enormous volume and variety of field notes, sketches, photographs, memos, draft manuscripts, publications, reviews and other intellectual assets produced by Minpaku’s first Director-General, UMESAO Tadao, are stored. An archivist will analyze and organize this material and provide support primarily for scholarly research.

Materials

Items in the Museum Collections Offered for Loan FY2020

In addition to using the items in its collection for internal research activities, the Museum offers items for loan to universities, other museums, and external organizations for educational and research purposes as part of its efforts to contribute to the public interest. To inquire about borrowing items from the Museum's collection, contact the Minpaku Collections Help Desk. A total of 156 inquiries were received during FY2020.

Minpaku Collections Help Desk

TEL /FAX +81-6-6878-8213

URL <https://www.minpaku.ac.jp/sharing/guide/helpdesk>

1. Number of Loans Made: 6, Number of Items Loaned: 157

Among the projects listed above, those for which the Museum's lending resources comprise more than 50% of the entire exhibit items are the following:

Borrower	Exhibition Title	Loaned Items	Exhibition Period	Items Loaned / Total Number of Items Loaned / % of Loaned Items Relative to the Entire Exhibition
Sakai City Museum	Serial Exhibition of Intangible Cultural Heritage: Traditional Drama in Asia	Clothes for masque, Mask, Beijing opera clothes	November 3 - November 29, 2020	23 items / 24 items, 96%

2. Number of Special Loans (i.e., Loans for the Purpose of Photo-shooting, Close Examination for Research or Loan of Original Film): 75, 4,159 items

Of the above, 12 loans were made to universities for the use of photographs as references for survey research and writing, 13 were made to museums for the use of photographs in survey research and exhibitions.

3. Number of Loans of Audio-visual Materials: 72, Number of Items Loaned: 404

Of the above, 20 loans were made to universities (112 items), and 20 loans to individual researchers and research groups (157 items).

4. Books and Periodicals

Number of special use (Use of original film or photo-shooting) 4 (of which 1 were for the use of photos as references for survey research and writing)

Photocopy orders: 3,714 (of which 2,256 were from universities)
Inter-library loans: 542 (of which 520 were from universities)
Photocopy orders: 174
Inter-library loans: 249

5. Research Archive Materials

Number of browsing instances: 21
Number of instances of special utilization: 13
Number of loans: 1



Artifact Storage Area

Storage of Academic Materials

The Museum has accumulated a large collection of academic materials through its research. Many of the materials are organic artifacts that generally have the least resistance to insect and fungus damage. Therefore, the Museum takes special measures to repel and kill insects and protect its collection. For example, newly acquired artifacts from abroad are taken to a fumigation chamber where they are treated with chemical insecticides and germicides, because the natural environment and ecosystem of their place of origin are substantially different from those of Japan. Artifacts that have insect damage in Japan, however, are subjected to a non-chemical insecticidal process as required, due to the nature of the materials. In this way, different insecticidal processes are used, depending on the place of origin, the extent of damage, and the nature of the materials. To enhance insecticidal efficiency and better protect artifacts from insect damage in a unique way, in 2007 a large high/low temperature walk-in treatment chamber was installed in the Museum and the existing fumigation chamber was upgraded to a multi-functional chamber capable of carbon dioxide treatment and low oxygen concentration treatment. Also, a catalytic combustion type chemical abatement system was introduced to ensure the safe treatment of waste chemicals, thus realizing a materials management system that is friendly to people, artifacts, and nature.

These state-of-the-art systems are one of the results of the research on the conservation science of artifacts that the Museum and other university researchers have been jointly conducting to ensure effective use of its artifact collection.



The High/Low Temperature Walk-in Treatment Chamber



A Multi-functional Fumigation Chamber Capable of Carbon Dioxide and Low Oxygen Concentration Treatments

Utilization of Minpaku for University Students and Faculty Members

We have established a system to encourage wide-ranging utilization of our research outcomes, exhibits, archived resources, cultural and academic information and facilities, for university education and research.
URL <https://www.minpaku.ac.jp/teacher/university/manual>

Use of Exhibition Halls

If you wish to use the Exhibition Halls for a lecture, seminar or official event (such as an orientation meeting for new students) of your university under the supervision of a faculty member, we will waive the admission charges, if you apply before the event. If a faculty member can not supervise the event, or if a professional or specialized training college wishes to use the Museum for a specialist training course, the admission charges will be discounted upon presenting the syllabus or any document that describes the syllabus content.



Use of Exhibition Halls

Use of the Library

We have approximately 690,000 books and other media resources that focus mainly on cultural anthropology and ethnology. We encourage visits to the Library as a part of university education.

Use of Artifacts and Resources

We have approximately 345,000 artifacts and resources collected from all over the world. They can be used for university education or research for free, under certain conditions.

Use of Audio-visual Materials

We have approximately 70,000 Audio-visual Materials from all over the world, including those produced by Minpaku. You can view about 824 Videothèque Programs on DVD. Some video materials are distributed through online streaming to make them available for online classes.



Use of Databases

Use of Databases

An enormous amount of information is provided in our databases for collections and research results.

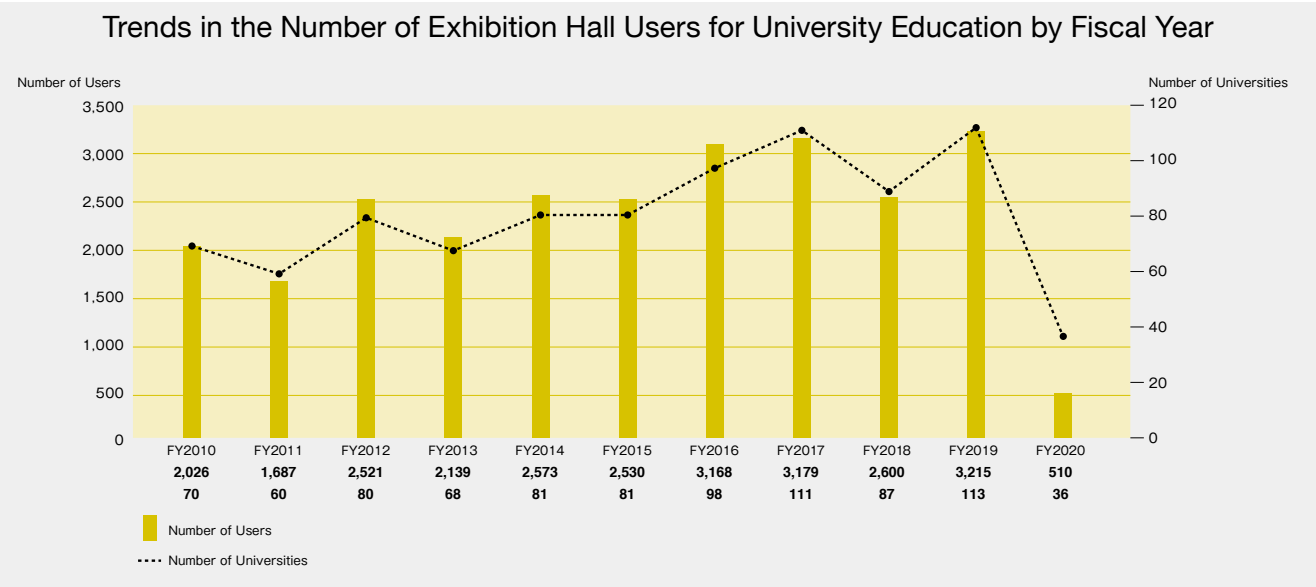
Development of Young Researchers

“Minpaku Junior Researcher's Seminar” is regularly held to promote joint use of the museum by young researchers. The two-day seminar consists of a keynote speech by museum faculty and presentation and discussion by participants. Additionally, it organizes library and storage area tours for young researchers to know more about various joint use systems and a facility directory.



Minpaku Junior Researcher's Seminar

Records of Use (Free-of-charge Use) 36 Universities, 510 users (FY2020)



Exhibitions

Concept and Organization of Exhibitions

At the National Museum of Ethnology, exhibitions are designed to present the latest achievements of anthropological, ethnological and other related scientific research to the public through a variety of media. In doing so, the Museum hopes to enhance public awareness of different cultures around the world and foster greater cross-cultural understanding. The exhibitions consist of Main Exhibitions and the Special Exhibitions. The Main Exhibitions are mostly permanent, and are designed to deepen understanding among visitors of cultural diversity and commonality. The Special Exhibitions, on the other hand, highlight specific topics and are held several times annually for a limited period of time.

Main Exhibitions

The Main Exhibitions are arranged into regional and cross-cultural exhibitions. The regional exhibitions cover Oceania, the Americas, Europe, Africa, and Asia, including Japan. The regional exhibitions start with Oceania, and progress as if traveling eastwards around the world to finish in Japan.

This arrangement allows visitors to view Japanese culture in comparison with other cultures. In designing the exhibitions, the National Museum of Ethnology adhered to the notion that all human cultures around the world have equal value; the notion has remained unchanged since the inception of the Museum. Accordingly, the exhibitions are designed to help visitors respect cultural differences among peoples, represented in the rich diversity of human lifestyles. These exhibitions are also characterized by their emphasis on clothing, food and housing, which gives visitors a clear idea about lives in different regions around the world. The cross-cultural exhibitions, on the other hand, focus on specific themes, not regions, and currently accommodate exhibitions on music and language.

Given the substantial changes of the social and cultural situation in the world since Minpaku's opening in 1977, the Museum has been renovating its exhibitions since FY2008, and it has completed in FY2016.

In the Thematic Exhibition Galleries in the Main Exhibition Hall, temporary exhibits display themes related to contemporary issues and cutting-edge research. Other individual themes are also presented.

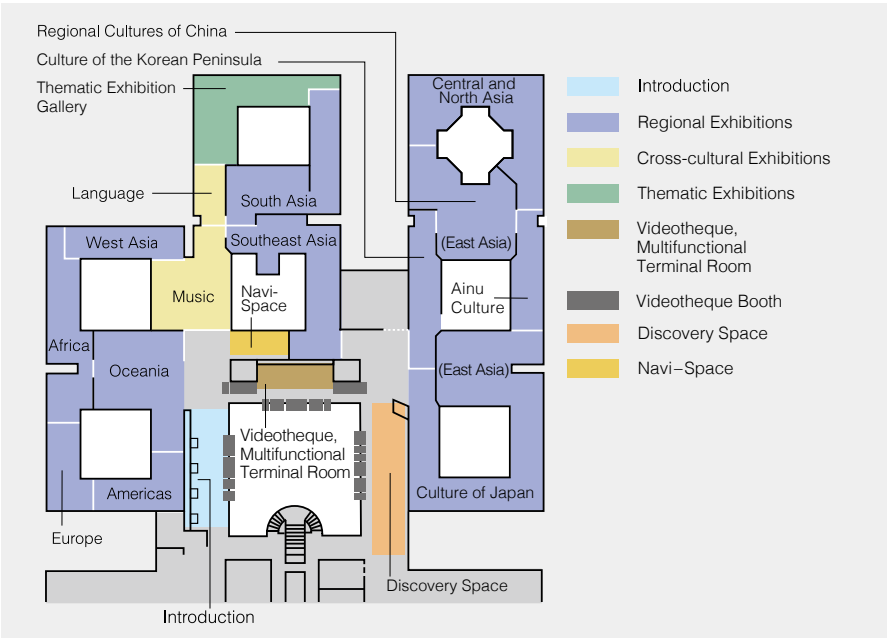
These Thematic Exhibition Galleries can also be used as a shared exhibition gallery to expedite displays of the latest research trends of universities and other institutions in Japan and overseas.

The Museum encourages the introduction of information devices into its exhibits.

One such device is the Videotheque. As the world's first on-demand video library of its kind, it was developed by the Museum when it opened its doors to the public. Video programs provide visitors with glimpses of the living cultures of the world's peoples and let them see how the artifacts shown in the Main Exhibition Hall are actually used.

The system allows visitors to select a video program from the Museum's collection, which now contains 824 titles. The second example of information devices held by the Museum is the Minpaku Digital Guide, which was developed in 1999 as the world's first portable audiovisual device using videos and voices to describe exhibits. The Minpaku Digital Guide provides various types of information, such as how the items exhibited were used, in what locations they were used, and by what kind of people they were used. Now, the system allows visitors to watch videos describing the exhibits on smartphones while checking their locations on the explanatory hall map displayed in their hand. The Minpaku Digital Guide was renewed in 2020 as a system equipped with new functions such as guidance for museum facilities and a link with Videotheque. These videos have been translated into multiple languages. Videotheque now provides 135 programs, out of the total of 824 programs, in nine different languages. The Digital Guide, produced in 2019, includes 328 programs that were made available in nine languages through machine translation of seven languages based on English subtitle data.

In the Discovery space, visitors can use the terminals to access and compare a wealth of information on artifacts currently on display. Related books and journals as well as Minpaku publications are also available.



Minpaku Digital Guide
This guide describes facilities and exhibits in the Exhibition Halls using the museum map. It shows videos and information related to the locations artifacts were found, how they were used, and by whom they were used. Explanations are currently available in nine languages, including Japanese, English, and Chinese.

Regional Exhibitions

The regional exhibitions focus on Oceania, the Americas, Europe, Africa, West Asia, South Asia, Southeast Asia, Central and North Asia, and East Asia. The figures appearing next to each exhibition space's name indicate the exhibit area in square meters.

Oceania 660m²



Human Dispersal into Oceania **Living off the Sea** **Living on Islands**
Contact with the Outside World **Expressions of Indigenous Identity**

In Oceania, tens of thousands of islands, large and small, are scattered across the surface of the ocean. The islands are inhabited by peoples who grow root and tree crops and are highly skilled in the arts of seamanship and navigation. In the sections "Human dispersal into Oceania", "Living off the Sea", and "Living on Islands", we explore the diverse techniques developed to survive in island environments with limited resources. We also examine how indigenous cultures have been affected by encounters with the outside world in the sections "Contact with the Outside World" and "Expressions of Indigenous Identity".

The Americas 320m²



Encounter **Eating** **Clothing**
Prayer **Creativity**

The vast expanses of the Americas range from polar regions to tropical rain forests and encompass a huge diversity of natural environments. Peoples adapting to these environments developed distinctive lifeways. Then came conquest and colonization by European peoples, with foreign influences permeating everyday life. Here our focus is on clothing, diet and religion. While clarifying the relationship between their underlying diversity and historical influences, we also draw attention to traditional artists and craftsmakers who creatively combine tradition with modern values in their works.

Europe 250m²



Agriculture and the Annual Cycle **Religions and Beliefs**
Industrialization **Europe in Transformation**

From the 16th to the 20th centuries, Europe was the center from which Christianity and modern institutions, technologies, and knowledge spread around the world. Now the tide has turned, and immigrants from all over the world are making themselves part of European society. Here we explore the interactions of tradition and religion, rationalization and industrialization, and immigration in the formation of modern Europe, focusing on the concept of "time".

Africa 500m²



Excavating History **Urban Life** **Work** **Adornment**
Prayer **Africa Today**

Africa, the birthplace of humanity, has gone through profound changes and has always been tied to the outside world. The diversity of cultures and languages that we see in the African continent today is the result of these changes. In this exhibit, we introduce the way in which people live in Africa today, focusing on four different aspects—"urban life", "work", "adornment" and "prayer". We also look at the efforts people are making to rediscover their history. We hope that this exhibit fosters renewed understanding toward the people of Africa, who live in the same present as we do.

West Asia

310m²

Religion
Living in the Desert
The Palestinian
Diaspora
Coffee as
Global Culture
Sound Culture
and Pop Culture



The people of West Asia, or the Middle East, call their land in Arabic *mashriq*, ‘the land of the rising sun’. Historically, they have kept close ties to the *maghrib*, ‘the land of the setting sun’, that is, North Africa. These regions consist mainly of dry lands inhabited by nomadic peoples. At the same time, urban cultures flourished in large cities such as Baghdad and Cairo. Islam is the majority religion in West Asia, but this region is also the cradle of Judaism and Christianity. This gallery highlights religious practices, nomadic life, women’s dress, and music and dance to show how global change has reached the lives of people in West Asia.

South Asia

600m²



Religion – Tradition and Diversity Ecology and Subsistence
Urban Popular Culture Tradition and Trends in Textiles
South Asia on the Move

South Asia extends from the mountain ranges in the north, to the Arabian Sea in the west, and the Bay of Bengal in the east. In this region there is a vast range of natural environments inhabited by peoples with an enormous diversity of religions, cultures, and ways of life. Wisdom of coexistence developed over the centuries, and, despite rapid industrialization, is preserved to this day. This gallery exhibits a diverse array of religions, livelihoods and crafts, together with new forms of popular culture emerging primarily in urban settings, and the booming textile culture in the midst of globalization.

Southeast Asia

730m²



Subsistence Everyday Life in a Village Urbanscapes
Entertainment and Recreation

Southeast Asia is encompassed by forests and seas. The climate is tropical to subtropical; people start work early in the morning, and return home and nap in the middle of the day when temperatures can approach 40°C. In the evenings and after squalls have passed, temperatures start to fall. People go out to shop or go back to work in their fields. In the cool of the evening they relax, head to outdoor stalls for meals with friends or family, or relax and enjoy traditional performing arts. The theme of this exhibit, which introduces a rich variety of ethnic cultures, is “A Day in the Life of Southeast Asia”.

Central and North Asia

710m²



Living with Nature The Socialist Era Central Asia
Mongolia Siberia and the Arctic

Central and North Asia is an immense region occupying the northeast of the Eurasian continent. It has long been a crossroads for interactions linking east and west, north and south, where many diverse peoples have mingled. After undergoing socialist rule during the twentieth century, the region has shifted to market economies. Caught up in the wave of globalization, traditions are being reevaluated. This exhibit has three sections on “Central Asia”, “Mongolia”, and “Siberia and the Arctic”, along with two sections accentuating the key themes of “Living with Nature” and “The Socialist Era.”

East Asia

Culture of the Korean Peninsula 330m²



Spiritual Worlds Housing Food Clothing
Recreation Knowledge

The inhabitants of the Korean peninsula developed their own distinctive culture under constant influence from other ethnic groups. Cultural elements adopted from Eastern Siberia in prehistoric times, and later from China, were reworked and domesticated to become distinctively Korean. The result is a culture with a level of integration rarely found elsewhere in the world. In modern times, Korea was colonized by Japan, then split in two after independence and rapidly modernized. In today’s world, Koreans are actively migrating to other parts of the world, and people of Korean descent can be found living outside Korea. Spiritual worlds, everyday life, recreation, and knowledge are the themes of this exhibit, which introduces the multilayered history and energetic character of this culture.

East Asia

Regional Cultures of China 660m²



Subsistence Musical Instruments Zhuang Stilt House Costume
Crafts Taiwan Indigenous Peoples Religion and Writing
Chinese Overseas Transmission of Chinese Tradition

The Chinese landscape is immense and highly diverse, both in altitude and topography. Its variety of natural environments has fostered a wide range of ethnic cultures. Han Chinese account for over 90% of China’s population, and, while concentrated in the plains, are spread throughout the nation. Mainland China is also home to 55 minority peoples, who live for the most part in the highlands or grasslands in southwest, northwest, and northeast China. In Taiwan, indigenous groups speaking diverse Austronesian languages live alongside Han Chinese. Chinese overseas all over the world regard China as their ancestral homeland. This exhibition introduces a diverse range of Chinese ethnic life ways. Taking into account historical and local characteristics, the exhibition explores livelihoods, costume, musical instruments, dwellings, crafts, religion and writing, Han Chinese marriage ceremonies and ancestor worship, Taiwan indigenous peoples, and Chinese overseas.

East Asia

Ainu Culture 270m²



The Ainu People Kamuy and Nature Present and Future

The Ainu are an indigenous people who developed a culture adapted to the cold natural environment of the northern part of the Japanese archipelago, primarily in Hokkaido. Domination by the Tokugawa Shogunate during the Edo period and assimilation during the Meiji period led to discrimination against the Ainu and imposed hardships on them. In recent years, Japan’s government has acknowledged this history and been taking steps that show respect for the Ainu people. Here we introduce the evolving situation of the Ainu, who continue to honor their traditions and strive to create a new and distinct culture.

East Asia

Culture of Japan 1,460m²



Ritual, Festivals and Performing Arts Everyday Life
Okinawan Lives Multiethnic Japan

Stretching from Hokkaido in the north to Okinawa in the south, the long, narrow Japanese archipelago is blessed with a rich variety of ecological niches. The combination of diverse natural environments and contacts with neighboring cultures has resulted in formation of distinct local traditions. In addition, many people from other countries have also come to live in Japan in recent years, adding new elements to the mix. In this section we approach Japanese culture from four perspectives: Festivals and Performing Arts, Everyday Life, Okinawan Lives, and Multiethnic Japan.

Cross-cultural Exhibitions

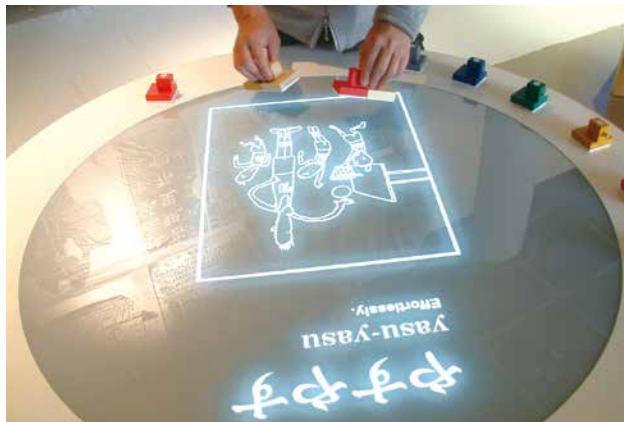
Music 550m²



Drums: A Spirited Sound Gongs: The Sound of Power
Oboe: Performing Sounds Guitar: Sounds in History

Through sounds, we humans convey messages, express emotions, know our surroundings, imagine far away times and places, inspire or console ourselves, and communicate with gods and spirits. With examples from all over the world, this exhibition shows how sounds and music are deeply related to our identity as humans.

Language 170m²



Components of Language
Language diversity
Writing Systems of the World

Whenever people meet and interact, the need for communication arises and pieces of information are continuously exchanged through various means. Among these, language, shared exclusively by human beings, is a highly developed tool which enables us to express emotional states, describe our deepest thoughts, and to pass intellectual knowledge beyond space and over generations. Language is our irreplaceable heritage, reflecting our diverse cultures and serving as a window for understanding people's cognitive and creative abilities.

Information Zone

Introduction



The exhibits in the Introduction section are designed to enable visitors to experience directly how anthropologists and ethnologists think and how Minpaku exhibits could be explored. Here is where your global journey starts.

Videotheque



We developed the Videotheque in 1977 as the world's first on-demand video library of its kind. It contains video programs that introduce rituals, performing arts, and the living cultures of peoples around the world, as well as information on the artifacts on exhibit at the Museum. We have continued to make improvements and produce multimedia programs and rare research videos shot by our researchers during their fieldwork to be available for viewing. The FY2012 improvements in our existing system include fuller menus that allow the viewing of programs from multiple perspectives. Booth interiors have been upgraded to offer a brighter and improved audio environment. Some of the booths were renewed in FY2019 to link the screening of high-resolution videos with Minpaku Digital Guide and expand the range of multilingual translation. Furthermore, we have added new booths that are accessible to visitors using wheelchairs.
(There were 16,538 requests for Videotheque programs in FY2020.)

Discovery Space



Research Desk Deepen Your Knowledge
Voices from the Field Connect to the World
Touch the World Widen Your Perspectives

In the Discovery Space, visitors may search for more information about exhibits at the Research Desk. Materials related to Minpaku researchers' projects can be found at Voices from the Field. Touch the World provides an opportunity to handle as well as see exhibit materials, to gain a deeper understanding of them. Visitors are invited to learn more about the artifacts on exhibit, to satisfy their curiosity about what Minpaku researchers are studying, and to experience artifacts directly.

Special Exhibition

Treasures of Indigenous Peoples

October 1 – December 15, 2020

Organizers: The National Museum of Ethnology

Project leader: NOBUTA Toshihiro

Organizing Committee members:

[Internal members] IKEYA Kazunobu, KISHIGAMI Nobuhiro, SAITO Reiko, SUZUKI Motoi, NOBAYASHI Atsushi, MINAMI Makito, KAWASE Itsushi

[External members] ABE kenichi, KITAHARA Jirota mokottunas KUBO Masatoshi, SHOJI Hiroshi, TACHIKAWA Akihito, TAMURA Masato, HONYA Yuuko

Cooperations: University Museum UMAK, The Arctic University of Norway, The Foundation for Ainu Culture, National Ainu Museum, Sapporo Marui Mitsukoshi, Shueisha "Weekly Young Jump," The Senri Foundation, Research Institute for Humanity and Nature, Center for Ainu and Indigenous Studies Hokkaido University, Eurasia Unit for Border Border Research, Japan (UBRJ)

There are approximately 370 million indigenous people spread across the world, reportedly belonging to at least 5,000 ethnic groups. The "treasure" of this special exhibition is the source of emotional support and ethnic pride of the people who have tirelessly lived every day without losing hope despite struggling against despotism and segregation. This exhibition introduces the world of indigenous people, with approximately 740 exhibits expressing their thought.



Thematic Exhibition

UMESAO Tadao's 100th Anniversary:
The Front-runner of Intellectual Production

September 3 – December 1, 2020

Organizers: The National Museum of Ethnology

Project leader: IIDA Taku

Organizing Committee members:

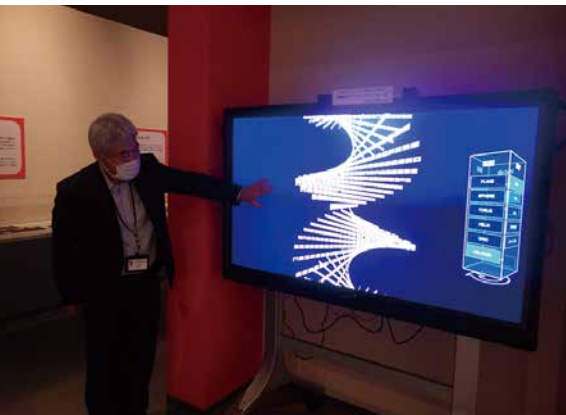
[Internal members] MARUKAWA Yuzo

[External members] KONAGAYA Yuki, KUBO Masatoshi, TAKANO Akihiko

Cooperations: The Senri Foundation

Academic Cooperations: National Institute of Informatics TAKANO Laboratory

Dr. Tadao Umesao (1920–2010), who served as the first director-general of Minpaku, was an intellectual pioneer who participated in numerous academic research projects. While he presented the method of compiling research results in a paper or other documents in his book, The Art of Intellectual Production (1969), he did not explain the specific process of arranging information. This thematic exhibition introduced the behind-the-scenes stories of Umesao's method using his archived materials and digital database.



LCD Monitor for Viewing UMESAO Tadao Archives

Cooperative Exhibitions

Shifting Cultivation from the perspective of Komei SASAKI: from Itsuki-mura to the world

October 3 – December 13, 2020

Historia Terrace Itsukidani
Project leader: IKEYA Kazunobu

The folk museum in the village of Itsuki in Kumamoto Prefecture introduced the village life of the time using primarily photographs of slash-and-burn farming in Itsuki taken by Dr. Komei SASAKI through his co-sponsorship with Minpaku. At the same time, we considered the future diet and agriculture in Japan (Kyushu) and Asia (Taiwan, Southeast Asia, etc.) from the case of the Itsuki village.



UMESAO Tadao's 100th Anniversary: The Front-runner of Intellectual Production

January 13 – March 14, 2021

The Kyoto University Museum
Project leader: IIDA Taku

This is a sequel to an event held at Minpaku in the fall of 2020, the Thematic Exhibition “UMESAO Tadao's 100th Anniversary: The Front-runner of Intellectual Production.” The exhibition included new exhibits such as Tadao Umesao's notebooks from his college years, along with sketches, field notebooks, materials collected in academic research, and materials related to Kyoto University.



Traveling Exhibition

REGNUM IMAGINARIUM: Realm of the Marvelous and Uncanny

June 23 – August 16, 2020

Hyogo Prefectural Museum of History
Project leader: YAMANAKA Yuriko

This exhibition featured various imaginary creatures, such as dolls, dragons, eerie birds, and unicorns, mostly among the ethnic materials stored at Minpaku. The exhibition showcases the cultural meanings of monsters, the names of which originated from monstium, meaning warning or omen.



The Digital Tactile Map [National Museum of Ethnology Touch Panel Guide]

The digital tactile map, National Museum of Ethnology Touch Panel Guide, is an interactive tactile map that makes information in the museum accessible to people, including for those with visual disability. The finger guide placed on the touch panel display and a voice guide are linked to provide tactile and audio information about the person's location in the museum and about the exhibitions. Currently, three of these touch panel guides are placed in the exhibition halls of Minpaku.

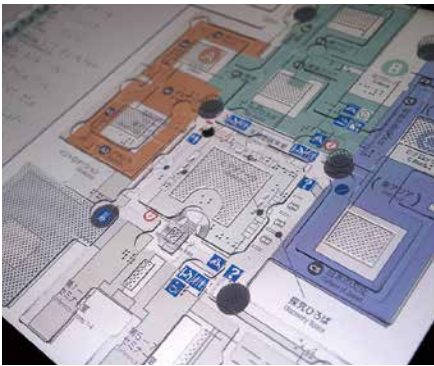
This digital tactile map was developed in Minpaku's Cultural Resource Projects. Members who led the design development of this project were Professor Yasuyuki Hirai of the Graduate School of Design at Kyushu University and Mr. Koichiro Fumoto, an instructor at the Faculty of Global and Science Studies, Yamaguchi University.

Awards

“Good Design Award 2020”
Organizers: Japan Institute of Design Promotion
Award given to: The Digital Tactile Map
[National Museum of Ethnology Touch Panel Guide]
Award given to: The National Museum of Ethnology, Kyushu University, Yamaguchi University

“IAUD International Design Award 2020 Silver award Public space design section”
Organizers: IAUD (International Association for Universal Design)
Award given to: The Digital Tactile Map
[National Museum of Ethnology Touch Panel Guide]
Award given to: The National Museum of Ethnology, Kyushu University, Yamaguchi University

“UNIVERSAL DESIGN expert 2021”
“UNIVERSAL DESIGN consumer 2021”
Organizers: IUD (Institute for Universal Design, Germany)
Award given to: The Digital Tactile Map
[National Museum of Ethnology Touch Panel Guide]
Award given to: The National Museum of Ethnology, Kyushu University, Yamaguchi University



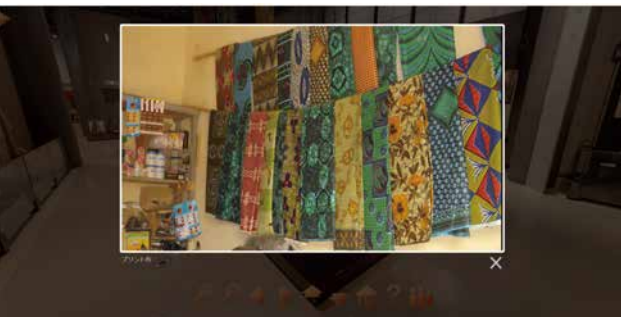
The Digital Tactile Map was Awarded Various Prizes
[National Museum of Ethnology Touch Panel Guide]

Virtual museum

A virtual museum is available on the Minpaku website. The Main Exhibition Halls were photographed wall-to-wall using a super-wide-angle camera. Each exhibition hall can be viewed from various angles on a PC or smartphone. Descriptive videos are available for some exhibits. Panorama movies of exhibition records featuring special exhibitions and thematic exhibitions held by Minpaku in the past is also available for viewing.



Virtual Museum (Africa exhibition)



Descriptive video

JICA Knowledge Co-Creation Program:
Implementation of “Museums and Community Development”

This program offers practical skills and know-how in acquisition, documentation, conservation, exhibition, and education, all of which are indispensable for museum operation. Through this course, museum specialists who will contribute to the cultural development of their respective countries or regions will be fostered.

Originally, the National Museum of Ethnology used to run the three-week “International Cooperation Seminar on Museology” as part of the JICA Museum Technology Course. In FY 2004, the program was re-designed as the four-month “Intensive Course on Museology” run by the National Museum of Ethnology and the Lake Biwa Museum, receiving full commission from JICA. Approximately 10 trainees from various countries and regions were accepted annually to this program specializing in museum activities. In FY 2012, after the Great East Japan Earthquake (2011), the program strengthened its focus on security and disaster prevention. At the same time, the program began closely working with tourism-related areas and also adopted a policy which encouraged participants to autonomously plan, implement, and disseminate their museum management activities based on what they learned from the program.

In FY2015, the program begun focusing on the role museums play in their respective communities and adopted a new title “Museums and Community Development”, which now runs for three months. In FY2020, as a result of discussions with JICA, the sponsor of the program, the program in FY2020 was postponed to the next fiscal year in view of the COVID-19 pandemic. The Museum is currently planning to run the program online in FY2021.

Since its inception, the program has evolved and its title and operational style has undergone several changes. However, its original aim-to promote international exchange through museums—remains unchanged. As of March 2021, 268 individuals from 61 countries and regions have participated in the program and have contributed to building a strong international network of museum specialists and curators.



ICOM Kyoto 2019



Public Forum (FY2019)



Lecture at Minpaku (FY2019)



Study Trip to MieMu (FY2019)



Specialized Program(Preventive Conservation) (FY2019)



Closing Ceremony (FY2019)

Minpaku Fellows

This is a network of international researchers who have worked with or for the Museum in the past, and foreign and domestic research institutions with close ties to the Museum. There are approximately 1,100 members in the Minpaku Fellows program.

Minpaku Fellows Breakdown by Area as of March 31, 2021

Regions	Number of Fellows
Asia, Middle East, Oceania	632
Europe	163
North America, Latin America and the Caribbean	202
Africa	64
Total	1,061

The Museum has been working to build networks to ensure the more systematic and viable use of cultural resources through academic collaboration with museums and universities, both in Japan and overseas. The Museum is also promoting various projects and activities that benefit local communities and international society, in cooperation with many organizations.

Min-pack

In order to contribute to a better understanding of our research, the Museum has developed a learning-kit for children, called Min-pack. It is lent to schools and other educational institutions. Min-pack is a learning kit carried in a suitcase that contains a variety of materials including clothes, musical instruments, and everyday commodities, of the world's countries and regions, with children's learning aids. 28 packs and 16 types are now available.

Lending period: September 3,2020- March 31,2021
FY2020 Number of loans : 127 Total number of users : 17,274

- Living in the Extreme North: Anoraks and Duffle Coats from the Inuit in Canada
- Treasure Box of the Andes: The Festivals and Life of the Peruvian Southern Highlands
- Costumes in Java: Religion and Tradition
- Indian Costumes: Saris and Kurtas
- The Arabian Nights
- Islam and Life of the Arab World
- Seoul Style: A Day in the Life of Children in Seoul
- Seoul Children After-school
- Bricolage Art
- Ainu Culture Encounter
- Expedition to the Steppes of Mongolia
- The 2011 Umesao Tadao Exhibition: Tools of Knowledge Production (This uses artifacts from the Special Exhibition “Umesao Tadao” held in 2011.)
- Muslims around the World: Daily Prayers
- Muslims around the World: Contemporary Life
- Ethiopian Coffee Ceremony
- Wearing Ethiopia: the Traditional Clothing of Amhara People



Min-pack
“Ainu Culture Encounter”



Min-pack
“The 2011 Umesao Tadao Exhibition: Tools of Knowledge Production (This uses artifacts from the Special Exhibition “Umesao Tadao” held in 2011.)”

Workshops

Workshops are organized to introduce the culture of the world through hands-on experiences (crafts) and to share research outcomes of the museum researchers with society.

Date	Workshop	Lecturer
October 31, 2020 – November 1, 2020	Workshop related to the special exhibition “Treasures of Indigenous Peoples”: “Let’s make a Totem Pole with paper”	TANUSHI Makoto (printmaker and sculptor) KISHIGAMI Nobuhiro
November 7 – 8, 2020	Workshop related to the special exhibition “Treasures of Indigenous Peoples”: “Making Ainu traditional arrows and mock hunting”	OKADA Keisuke (Culture Planning Division Manager, National Ainu Park) YAMAMICHI Yomaru (Educational Program Division Team Leader, National Ainu Park) SAITO Reiko



“Let’s make a Totem Pole with paper”



“Making Ainu traditional arrows and mock hunting”

Worksheets

We have worksheets for a themed tour, for Special or Thematic exhibitions, and for self-learning, depending on visitor’s request. Related details can be found on our website. They are downloadable for free use.

Mimpaku at Home

A special page, “Minpaku at home,” was created on the Minpaku website on March 9, 2020, for children and others who had to stay at home because of the COVID-19 pandemic. This page features a Virtual Museum for viewing exhibits online and paper craft, “pop-up lion dance and lucky coloring,” worksheets, “paper beads,” various reading material, and other items used in previous workshops. In 2020, a video, “Minpaku workshop at home: Look at the beads’ material! Take on the challenge of making paper beads,” and coloring sheets (seven types) created by Minpaku Museum Partners (MMP) were added.

Conduct of *Kamuynomi*, and Craftmanship Training for the Ainu Association of Hokkaido

The Museum is carrying out two projects under an agreement with the Ainu Association of Hokkaido, a public interest incorporation. One is an implementation of the *Kamuynomi* rite. *Kamuynomi* is an Ainu word meaning ‘prayer to the deities’. By implementing the *Kamuynomi* rite, the Museum aims to ensure proper storage of its Ainu collection and handing down of this traditional rite to future generations. In the past, this rite was performed privately by the late Mr. kayano Shigeru acting as the priest. Since FY2007, regional members of the Hokkaido Ainu Association (currently the Ainu Association of Hokkaido) gave public performances of traditional Ainu dance together with the *Kamuynomi* rite. Another project is reception of traditional craft engineers dispatched by the Ainu Institute as foreign researchers which will help the Museum to further improve its academic research and collection on Ainu culture, and also promote the cultural development of Ainu people. In FY 2020, neither project was cancelled because of the novel coronavirus disease (COVID 19) pandemic.



The *Kamuynomi* Rite (FY2019)

Music Day at Minpaku

World Music Day, a festival which began in France to celebrate the summer solstice with a musical performance, was introduced in Japan in 2002. On this day, various musical events are held nationwide. Since 2003 the Museum, in support of the event, has been making space available for concerts to members of the public who enjoy music. In FY 2020, the event was cancelled because of the novel coronavirus disease (COVID 19) pandemic.



Music Day at Minpaku in 2019



Museum-School Partnership Program

Twice each year, in spring and fall, Minpaku presents “Guidance for Teachers”, an event at which teachers are introduced to tools for use before and after visits to the Museum as part of school trips or other extramural activities. Our aim is to promote greater use of the Museum in education. In 2020, Minpaku suspended in-person events because of the COVID-19 pandemic. As an alternative, it produced seven videos for people related to schools and education: National Museum of Ethnology Guidance for School Organizations. These videos were released on March 25, 2021, on the Minpaku website and on its YouTube channel.

Volunteer Activities

Minpaku Museum Partners (MMP) is a group of volunteers established in September 2004, to assist the Museum in the planning and implementation of its activities. MMP is promoting a widely various range of activities in cooperation with the Museum, such as “Main Exhibition Hall guidance for visually-impaired persons” (a program to support them to experience the exhibitions in the hall), “Wakuwaku taiken at Minpaku” (a hands-on tour mainly for elementary school children), and craft workshops for general visitors. MMP also actively involves itself in workshop festivals and volunteer exchange programs outside the museum to deepen the relationship with other museums and facilities. In FY 2020, some programs and activities were cancelled because of the novel coronavirus disease (COVID 19) pandemic.



Main Exhibition Hall Guidance for Visually-Impaired Persons (FY2019)



Wakuwaku taiken at Minpaku (FY2019)



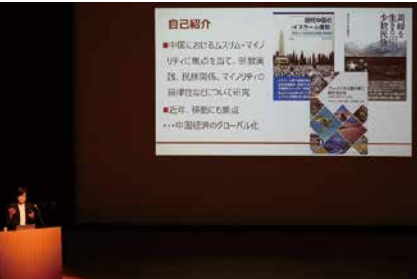
Experiencing Braille at the Workshop (FY2020)

Minpaku Seminars

On the third Saturday of every month, the Museum’s academic staff and others give lectures in plain language to the general public on the newest research findings.

FY2020 Total Attendance: 570 (in the FY2019: 2,125)

No.	Date	Lecturer	Title
501	August 15, 2020	NARA Masashi	Destination of Labor Migration is “Small United Nations”: Muslims in Yiwu, Zhejiang Province
502	September 19, 2020	KONAGAYA Yuki TAKANO Akihiko (National Institute of Informatics Professor) IIDA Taku	Principle of Intellectual Production Learned from UMESAO Tadao
503	October 17, 2020	KITAHARA Mokottunas (Hokkaido University Center for Ainu and Indigenous Studies Associate Professor) SAITO Reiko	World of Ainu Literature: Comparison with Korea and Japan
504	November 21, 2020	HIRAI Kyonosuke	Museums change Society: Minamata's Heritage
505	December 19, 2020	DEGUCHI Masayuki	Applying MINPAKU's Researches to Policy: Introduction to transformative research
506	February 20, 2021	KAWAI Hironao	Chinese Overseas in the Southern Hemisphere: With a Focus on the Hakka People
507	March 20, 2021	KATO Koji (Musashino Art University Professor) HIDAKA Shingo	Ethnography of the Oshika Peninsula: Curation for revitalization



No.501 “Destination of Labor Migration is “Small United Nations”: Muslims in Yiwu, Zhejiang Province”



No.506 “Chinese Overseas in the Southern Hemisphere: With a Focus on the Hakka People”



No.507 “Ethnography of the Oshika Peninsula: Curation for revitalization”

Minpaku Weekend Salon: A Chat with a Researcher

To better understand our research, this event provides an opportunity for the public to talk directly with research institute staff in the Museum’s exhibition hall. The Minpaku Weekend Salon was launched in FY2007, as part of the Museum’s 30th Anniversary project. Like last year, it was held on Sunday a total of 16 times in FY2020, and the audience totaled 552 persons.

Special Lectures and Performances FY2020 Total Attendance: 131

Performing arts of the world’s peoples are staged, with the aim of deepening understanding of cultural anthropology and ethnology among the public.

Hanshin Toramai Dance at Minpaku (online)

Date	March 6, 2021
Lecturer	TERAMURA Hirofumi
Coordinator	HIDAKA Shingo
Commentator	HASHIMOTO Hiroyuki (Osaka City University Urban Research Plaza Research Fellow, <i>Ikasuri Jinjya gonnegi</i>) NAKAGAWA Shin (Osaka City University Urban Research Plaza Project Professor) YAMAMOTO Kazuma (<i>Hanshin Toramai</i>) KANEZAKI Wataru (<i>Otsuchi Shiroyama Toramai</i>) SASAYAMA Masayuki (Specialized investigator of disaster-affected cultural heritage)
Performers	<i>Hanshin Toramai</i>
Attendance	131



Hanshin Toramai Dance at Minpaku

Minpaku Film Shows

Valuable films on cultural anthropology and ethnology, hardly available in public, are shown with commentary by researcher.

FY2020 Total Attendance: 762

Date	Lecturer	Title	Attendance
October 10, 2020	NOBUTA Toshihiro MORITA Shigeru (The Asian Cultures Research Institute, Toyo University Visiting Researcher)	The Tree Remembers	125



Minpaku Visual Ethnography Theater

Date	Lecturer	Title	Attendance
January 23, 2021	FUKUOKA Shota, MISHIMA Teiko	People and Regional Radio beyond Senegal	59
January 30, 2021	FUKUOKA Shota, MINAMI Makito	Sarangi Music of Nepal	81
February 13, 2021	FUKUOKA Shota, YAMANAKA Yuriko	Eerie to the Ear: Connecting with the Otherworld through Sound	133
February 27, 2021	FUKUOKA Shota, FUKUTOMI Tomoko (Tokyo University of Foreign Studies Lecturer (part-time)) TERADA Yoshitaka (National Museum of Ethnology Professor Emeritus)	Traditional Performing Arts of Khmer People in Cambodia	92



Minpaku World Cinema

By selecting appropriate movies for theme “Thought on The Future of Humanity from Films”, the Museum offers a series of film showings accompanied by researcher commentary.

No.	Date	Lecturer	Title	Attendance
48	September 12, 2020	SUGASE Akiko	The Insult	129
49	November 7, 2020	SUGASE Akiko TAMURA Katsumi (National Museum of Ethnology Professor Emeritus)	Passage of Life	143



Campus Members

This membership program is aimed at providing opportunities to learn about cultural anthropology and ethnology through cooperation between the National Museum of Ethnology and educational institutions such as universities. Member schools receive privileges such as participation in events, including exhibition tours, special lectures and performances, and movies free of charge and discounts at the Museum Shop.

Member schools in 2020

Osaka University, Kyoto University, The Ristumeikan Trust, Tsukamoto Gakuin, Doshisya University (Faculty of Global and Regional Studies, Department of Culture and Information Science, Faculty of Culture and Information Science), Senri Kinran University

Related Activities

On September 13, 2020, “Discussions on Expo in Osaka III: 50 years since Expo '70,” a symposium organized by Kita Osaka Museum Network, was held at Minpaku in cooperation with museums in eight cities and three towns. The National Museum of Ethnology and Suita City concluded a “Basic Agreement on Mutual Cooperation” through which both will promote close ties contributing to the development and enrichment of the local community. In addition, Minpaku will use the Suita City “Five-University Lifelong Learning Navi” (<http://www.suita5u.com>) to disseminate information about its activities. In September 2020, Minpaku Fair was held at Suita City Information Plaza (Inforest Suita), to promote Minpaku’s activities (visitors totaled 11,210 persons).



Data Collection

History

1935	A plan to establish an ethnological museum of Japan as an incorporated foundation is developed under the leadership of SHIBUSAWA Keizo and SHIRATORI Kurakichi.
1964	The Japanese Society of Ethnology, the Anthropological Society of Nippon, the Japanese Archaeological Association, the Folklore Society of Japan, and the Japanese Association of Ethnology jointly submit to the Minister of Education and other relevant authorities a request to establish a national ethnological research museum.
1972	A research council (chaired by KUWAHARA Takeo) conducts a feasibility study on the establishment of a National Ethnological Research Museum. A basic concept plan for the museum is submitted to the Minister of Education.
1973	A preparatory council for the establishment of a National Ethnological Research Museum (tentative name) and a preparation office are set up.
1974	The National Museum of Ethnology is founded under the “Law to amend part of the National School Establishment Law” (No. 81, 1974), with an Administration Department, an Information and Documentation Center, and five Research Departments. Collecting artifacts from overseas was started in Papua New Guinea.
1975	A collection of folklore reference materials (28,432 items) owned by the former Ministry of Education Archive were transferred from the National Institute of Japanese Literature.
1977	The Museum buildings (28,778m ²) are completed and the surrounding area is landscaped. An opening ceremony is held. Exhibitions on Oceania, the Americas, Europe, Africa, West Asia, Music, Language, Southeast Asia, and East Asia (Japanese Culture), as well as the Videotheque are opened to the public.
1978	Long-term and carefully organized “Special Projects” are started as key components of ethnological research.
1979	The fourth Exhibition Hall (1,272m ²), which accommodates an additional exhibition on East Asia (Japanese Culture), is completed and opened to the public. Exhibitions on Central and North Asia, and East Asia (Ainu Culture) are opened to the public.
1981	The Auditorium (3,704m ²) is completed.
1983	The eighth Exhibition Hall and other facilities (4,816m ²) are completed. The exhibition on East Asia (Cultures of the Korean Peninsula and Regional Cultures of China) is opened to the public.
1984	The 10th anniversary of the Museum’s founding is celebrated. “A Ten-Year History of the National Museum of Ethnology” is published.
1987	The 10th anniversary of the Museum’s opening to the public is celebrated.
1989	The School of Cultural and Social Studies (with the Department of Regional Studies and the Department of Comparative Studies) of the Graduate University for Advanced Studies is established within the Museum. The Special Exhibition Hall and the library stacks (5,292m ²) are completed. The first special exhibition, “The Great Andes Civilization: Inca, the Reviving Empire of the Sun” is organized to celebrate the completion of the Special Exhibition Hall.
1993	The main Museum building is expanded and a joint research facility (891m ²) is completed.
1994	The 20th anniversary of the Museum’s founding is celebrated. The Japan Center for Area Studies is established. (Discontinued in FY2005)
1995	Owing to damage caused by the Hanshin-Awaji Great Earthquake, the entire collection is closed for 45 days. (Earthquake-proof reinforced construction was retrofitted between 2002 and 2003) The Center of Excellence (COE) program is established: “Pioneering Research for the Development of New Ethnological Studies Using Multimedia in the Global Era.” (Concluded at the end of FY1999)
1996	The seventh Exhibition Hall (6,439m ²) is completed. Exhibitions on Language and Southeast Asia are renovated. An audio-visual gallery, the Materiatheque, and the exhibition on South Asia are opened to the public.
1997	The 20th anniversary of the Museum’s opening to the public is celebrated.
1998	Following the enactment of the Ministerial Ordinance to revise part of the administrative rules for the Inter-University Research Institute (Ordinance of the Ministry of Education No. 24 of 1998), the five research departments are reorganized into four research departments and one research facility.
1999	The Minpaku “Digital Guide and Study Area” are completed and opened to the public.
2000	A renovated exhibition on the Cultures of the Korean Peninsula is opened. Partial renovation of the Museum exhibitions continued until 2003.
2004	As authorized by the National University Corporation Act (Act No.112,2003), the National Institutes for the Humanities, as part of the Inter-University Research Institute, is established. The former system of 4 research departments and 1 research center is reorganized into a system with 3 research departments and 2 centers. To facilitate joint research, screening by the Joint Research Committee, whose members include representatives from the research community, is established and the scope of the call for joint research applications expanded. Editing of a book entitled A Thirty-Year History of the National Museum of Ethnology is one of the earliest commemorative events started in preparation for the 30th anniversary of the Museum’s founding. (The book is published in March 2006.)
2006	The Minpaku Collections Help Desk opens.
2007	The 30th anniversary of the Museum’s opening to the public is celebrated.
2008	A collaborative agreement is signed with the Japanese Society of Cultural Anthropology.
2009	After renovation, the Africa and West Asia galleries are re-opened to the public.
2010	After renovation, the Music and Language galleries are re-opened to the public. New systems are consolidated including the establishment of the Center for International Academic Exchange.
2011	After renovation, the Oceania and Americas galleries are re-opened to the public.
2012	After renovation, the Europe gallery and Information Zone are re-opened to the public.
2013	After renovation, the East Asia–Culture of Japan gallery is re-opened to the public. Consolidation of new systems, including the Audit Office and Umesao Archives.
2014	After renovation, the East Asia–Culture of the Korean Peninsula, Regional Cultures of China, and Culture of Japan galleries are re-opened to the public.
2015	After renovation, the South Asia and the Southeast Asia galleries are re-opens to the public.
2016	After renovation, the Central and North Asia, and the East Asia–Ainu Culture galleries are re-opened to the public.
2017	Renovation of the Main Exhibitions was completed,anniversary ceremony is celebrated. The former system of 3 research departments and 2 research centers is reorganized into a system with 4 research departments and 1 research center. The 40th anniversary of the Museum’s opening to the public is celebrated. Joint-Use Facilities for Scientific Research is established.
2018	The exhibition hall was closed for 66 days because of damage caused by the Osaka northern district earthquake. The library was closed for 49 days.
2020	The National Museum of Ethnology was closed for 111 days because of the novel coronavirus disease (COVID-19) pandemic.

Former Directors-Generalas of April 1, 2021

First Director-General June 1974–March 1993 UMESAO Tadao (deceased) Ethnology, comparative study of civilizations	Second Director-General April 1993–March 1997 SASAKI Komei (deceased) History of agriculture in East and South Asia	Third Director-General April 1997–March 2003 ISHIGE Naomichi Cultural anthropology	Fourth Director-General April 2003–March 2009 MATSUZONO Makio Social anthropology	Fifth Director-General April 2009–March 2017 SUDO Ken’ichi Social anthropology
---	---	---	--	---

Professors Emeriti as of April 1, 2021

1984– SOFUE Takao (deceased) Psychological anthropology	1996– FUJII Tomoaki Ethnomusicology, Anthropology of music	2004– TANABE Shigeharu Social anthropology of Southeast Asia	2014– TAMURA Katsumi Cultural Anthropology; Southeast Asia, East Asia
1985– IWATA Keiji (deceased) Cultural anthropology	1996– TOMOEDA Hiroyasu (deceased) Social anthropology	2004– YAMADA Mutsuo (deceased) History of Latin America, Area study of Latin America	2014– YOSHIMOTO Shinobu Textile Arts and Technology; Asia, Africa, America, Europe
1986– KATO Kyuzo (deceased) Ethnic history in North and Central Asia	1997- SASAKI Komei (deceased) History of agriculture in East and South Asia	2005– EGUCHI, Paul K. (deceased) Oral literature and material culture of the Fulfulde-speaking people, Cameroon	2015– KUBO Masatoshi Ethno-Informatics, Computer Ethnology, Study on Aboriginal Australian Culture
1988– ITO H Mikiharu (deceased) Anthropology of religion	1997– SUGIMURA Toh Study of ethno-arts	2005– MATSUBARA Masatake Social structure, Turkey, Eastern Asia, Central Asia	2015– SHOJI Hiroshi Finno-Ugric Linguistics, Ethnolinguistics, Language Policy; Northern Europe, China
1988– NAKAMURA Shunkichi (deceased) Study of ethnic technologies and tools	1998– WADA Shohei Comparative study of cultures, Anthropology of Africa	2005– OHTSUKA Kazuyoshi Aynu (Ainu) culture, Material culture of North Asian food gatherers, paleoecology, Prehistoric Subsistence, Japan	2015– YASUGI Yoshiho Linguistic Anthropology, Writing Systems, Mayan Civilization, Mesoamerica
1989– KIMISHIMA Hisako Chinese folklore	2000– SHIMIZU Akitoshi Comparative study of families, Study of Oceania	2006– ISHIMORI Shuzo Cultural development studies, anthropology of tourism, Museum anthropology, Cultural resource management; Micronesia, Polynesia, Southeast Asia, Japan	2016– ASAKURA Toshio Social structures in East Asia; Korea, Japan
1990– WADA Yuiti (deceased) Linguistic anthropology	2001– HATA Nobuyuki Economic anthropology, Anthropology of Africa	2006– NOMURA Masaichi (deceased) Nonverbal communication, Ethnology of Mediterranean Europe	2016– SUGIMOTO Yoshio Social anthropology; Sri Lanka, South India
1991– TARUMI Minoru (deceased) Anthropology in spatial domains	2001– KURODA Etsuko Theory of ethnicity and social culture, anthropology of Central America	2007– OMORI Yasuhiro Ethnology, Visual anthropology	2017– SUDO Ken’ichi Social anthropology
1992– SUGIMOTO Hisatsugu Cultural geography, Cultural anthropology	2001– SAKIYAMA Osamu Linguistic anthropology, Oceanic linguistics	2007– YAMAMOTO Norio Ethnobotany, Ethnology, the Andes, the Himalayas	2017– TAKEZAWA Shoichiro African history, History of anthropological thought; West Africa
1993– KATAKURA Motoko (deceased) Social geography, Ethnology	2002– KOYAMA Shuzo Ethnoarchaeology	2009– MATSUZONO Makio Social anthropology	2017– TSUKADA Shigeyuki Ethnohistory; Southern China
1993– OGYU Chikasato (deceased) Cultural structure of Latin America	2002– MORITA Tsuneyuki Conservation science, Ethno-technology	2010– Matsuyama Toshio Ethnology of contemporary Australian aboriginal society	2018– INTOH Michiko Prehistory of Oceania; Oceania, Island Southeast Asia
1993– UMESAO Tadao (deceased) Ethnology, comparative study of civilizations	2003– KURITA Yasuyuki Museum anthropology, Study of Bhutan	2011– NAGANO Yasuhiko Historical linguistics, lexical semantics; Tibeto-Burman area	2018– YOKOYAMA Hiroko Cultural anthropology, Chinese society and culture
1994– TAKEMURA Takuji (deceased) Social anthropology	2003– SUGITA Shigeharu Computer ethnology, Study of civilization	2012– AKIMICHI Tomoya Maritime anthropology, Ecological anthropology; Oceania,Southeast Asia, Japan	2020– TERADA Yoshitaka Ethnomusicology, Study of South India
1995– CHOU Ta-sheng (deceased) Theory of material culture	2004– FUJII Tatsuhiko Prehistory of the New World continent	2012– NAKAMAKI Hirochika Japanese religion, Brazilian company culture; Japan	2021– DEGUCHI Masayuki Third Sector Research, Civil Society Studies
1995– MATSUZAWA Kazuko Social anthropology	2004– Kumakura Isao History of Japanese culture	2014– KOBAYASHI Shigeki Museum Science, Cultural Anthropology	
1996– DAIMARU Hiroshi (deceased) Comparative study of the history of lifestyles, based on clothing, etc.	2004– TACHIKAWA Musashi Philosophy of religion, Buddhist thought		

Note: Visiting Research Fellows and Overseas Visiting Fellows are not included in the numbers given for "Staff" members.

Category	Director-General	Prof.	Assoc. Prof.	Assist. Prof.	Project Prof.	Project Assoc. Prof.	Project Assist. Prof.	Subtotal	Administrative & Technical Staff	Total
Staff	1	25	22	4	0	0	1	53	51	104
Visiting Research Fellows		13	8					21		21
Overseas Visiting Fellows		1						1		1
Director-General	1							1		1
Audit Office									1(2)	1(2)
Office of Administration									29	29
Office of Information and Documentation		(1)							21(1)	21(2)
Research Departments		21	17	4	0	0	1	43		43
Center for Cultural Resource Studies		4	5	0				9		9

Parenthesis () shows the number of staff members holding two posts. The figure for administrative staff includes one project specialist.

Budget

FY2020

Revenue

Category	(Millions of yen)
Management Expenses Grants	2,732
Foundation	2,613
Others	119
Revenue	30
Admission fee	18
Others	12
Facilities	99
Grants-in-Aid for Scientific Research	253
Total	3,114

Expense

Category	(Millions of yen)
Salaries	1,108
Others	1,753
Education and research	413
Joint use	782
General management costs	459
Facilities	99
Grants-in-Aid for Scientific Research	253
Total	3,114

Note: These figures are from the revised budget include the carry-over from the previous fical year and exclude the carry-over to the next fiscal year.

FY2021

Category	(Millions of yen)
Management Expenses Grants	2,864
Foundation	2,706
Others	158
Revenue	62
Admission fee	38
Others	24
Facilities	70
Grants-in-Aid for Scientific Research	337
Total	3,333

Category	(Millions of yen)
Salaries	1,122
Others	1,874
Education and research	482
Joint use	785
General management costs	537
Facilities	70
Grants-in-Aid for Scientific Research	337
Total	3,333

Note: These figures are from the annual budget include the carry-over from the previous fiscal year

Facilities

The Basic Concept of the Museum Design

The Museum consists of low-rise buildings which naturally blend with the surrounding park environment. In designing the buildings, special emphasis was placed on the aesthetics of traditional Japanese architecture. Each floor of the Museum's main building is composed of several blocks. While the outer walls of these blocks have no openings for natural lighting, plenty of light is let in through the inner courtyards (patios). The patios provide a sense of openness and connection with the outer world, and are also used as open-air exhibition space.

Each floor is designed to be dedicated to a specific purpose, namely, storage on the first floor, exhibitions on the second, and research on the third and fourth. Elevators and staircases provide direct access to these floors. As the route is laid out in a manner that allows for a circular trip, visitors can either go through all the exhibitions, or choose to visit certain exhibitions of interest.

In addition, in order to make the Museum barrier-free and universally accessible, changes such as the installation of Braille labels are ongoing.

Total area of grounds: 40,821 m²
Ground area occupied by the museum buildings: 18,177 m²
Total floor space: 52,648 m²

Fourth Floor 7,207 m²
Offices of research staff members, laboratories, library stacks, and storage area.

Second Floor 16,830 m²
Exhibition halls, patio, central patio, multifunctional terminal room, administration offices, Special Exhibition hall and auditorium (seating capacity for 462 persons).

Main Exhibition Halls 10,938 m²

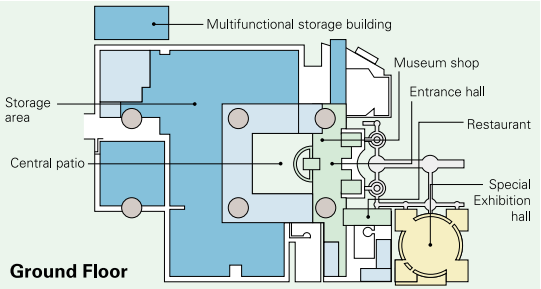
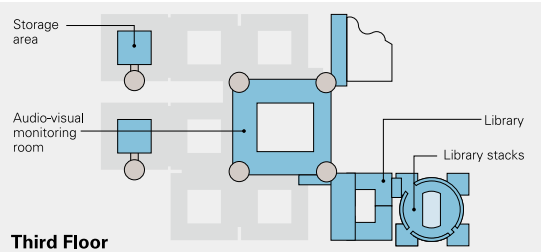
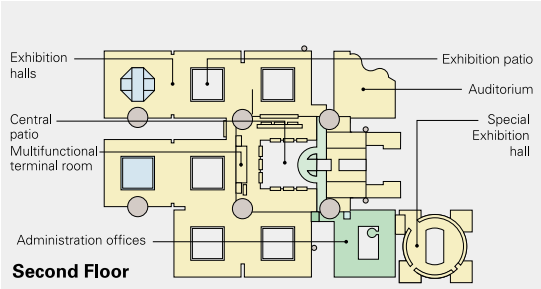
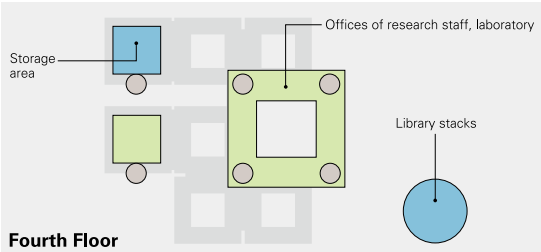
Third Floor 7,340 m²
The library, library stacks, audio-visual monitoring room and storage areas.

Ground Floor 17,410 m²
Entrance hall, central patio, restaurant, Special Exhibition hall, storage area and museum shop.

Special Exhibition Halls **Ground Floor** 851 m²
Second Floor 639 m²

Rooftop 846 m²

Basement 3,015 m²



Cooperative Agreements

Promotion of Research Coordination and Collaboration with Overseas Research Institutes

Minpaku has established academic agreements with overseas research institutions for research cooperation and collaboration. In December of FY2020, the agreement with the Russian Museum of Ethnography expired. The trilateral agreement with Taiwan Hakka Cultural Development Center and the College of Hakka Studies, National Chiao Tung University, ended in March 2021.

Name of the Institutes	Date of Agreement	Outline of Agreement
The Faculty of Forestry, Kasetsart University (Thailand)	November 22, 2019	Academic research and exchange in joint research, training, publishing, and exhibition projects.
National Museums of Kenya (Kenya)	November 7, 2019	Conducting collaborative research projects including those on museum objects possessed by the Parties; Organizing lectures, symposia and joint exhibitions; Exchange of research information and materials; Promoting cultural and museological exchange programs; and Cooperation in exchange of research staff.
Bangladesh Agricultural University (Bangladesh)	November 3, 2019	Academic research and exchange in joint research, training, publishing, and exhibition projects.
Institute of Archaeological Studies named after Yahyo Gulomov, Academy of Sciences of the Republic of Uzbekistan (Uzbekistan)	September 19, 2019	Cooperation in a variety of research and academic projects; collaborative research in archeology, anthropology, geography, conservation science and other related fields; exchange of visiting scholars, curators and/or other research staff, etc.
The National Research Centre of Archaeology (Indonesia)	June 10, 2019	International joint archaeological research in Indonesia, to reporting programme effectiveness, activities, and research results, etc.
National Museums Board (Zambia)	August 12, 2018	International joint research, exchange of researchers, exchange of museum-related materials and information, etc.
National Museum of Iran (Iran)	November 8, 2017	International joint research, exchange of researchers, exchange of museum-related materials and information, etc.
Taiwan Hakka Cultural Development Center and College of Hakka Studies, National Chiao Tung University (Taiwan)	December 16, 2017	International joint research, exchange of researchers, exchange of museum-related materials and information, etc.
University of British Columbia, Museum of Anthropology (Canada)	March 9, 2017	Academic cooperation and exchange on research projects, exhibitions, database development, etc.
Institute of Anthropology and the Library, Zhejiang University (China)	April 19, 2016	Contribution of references, exchange of human resources, joint research.
Vanderbilt University (USA)	January 15, 2016	Strengthening global collaborative research and organizing international symposia.
National Museum of Taiwan History (Taiwan)	October 16, 2015	Collaborative research and cooperation on exhibition development.
The Museum of Northern Arizona (USA)	July 4, 2014	Strengthening academic exchange and collaborative research.
The Institute of Ethnology and Anthropology, Chinese Academy of Social Sciences (China)	August 28, 2012	Along with other scholarly exchanges, Minpaku participates in research projects and the exchange or shared use of research materials, academic data and publications.
The National Museum of the Philippines (Philippines)	July 18, 2012	International joint research, exchange of researchers, exchange through projects that include joint research training, publication and exhibits.
A'shiwi A'wan Museum and Heritage Center (USA)	June 3, 2012	Scholarly cooperation, development of joint research projects, and exhibits or educational use of museum materials.
Institute of Ecology and Biological Resources (Viet Nam)	March 22, 2012	International joint research, exchange of researchers, exchange through projects that include joint research training, publication and exhibits.
Peter the Great Museum of Anthropology and Ethnology of the Russian Academy of Sciences (Kunstkamera) (Russia)	October 21, 2011	Promotion of interaction and cooperative relationships between the academic and cultural spheres.
The Russian Museum of Ethnography (Russia)	December 3, 2010	Collaboration and cooperation in museology, research methods and cultural asset preservation.
The University of Edinburgh (U.K.)	May 17, 2010	Promotion of academic exchanges and joint research.
Taipei National University of the Arts (Taiwan)	May 15, 2009	Academic exchange, development of research projects, cooperation on museum exhibitions and educational initiatives, exchange of academic information and publications.
Inner Mongolia University (China)	September 22, 2008	Exchange between teaching faculty and researchers, development of research projects, cooperation on museum exhibitions and education, exchange of academic documents and publications.
The National Folk Museum of Korea (Korea)	July 11, 2007	Exchange between teaching faculty and researchers, development of research projects, cooperation on museum exhibitions and education, exchange of academic documents and publications.
Shung Ye Museum of Formosan Aborigines (Taiwan)	July 1, 2006	Collaborative research and cooperation on exhibition development.
The National University of San Marcos (Peru)	June 14, 2005	Joint research projects and academic exchanges in archaeology.

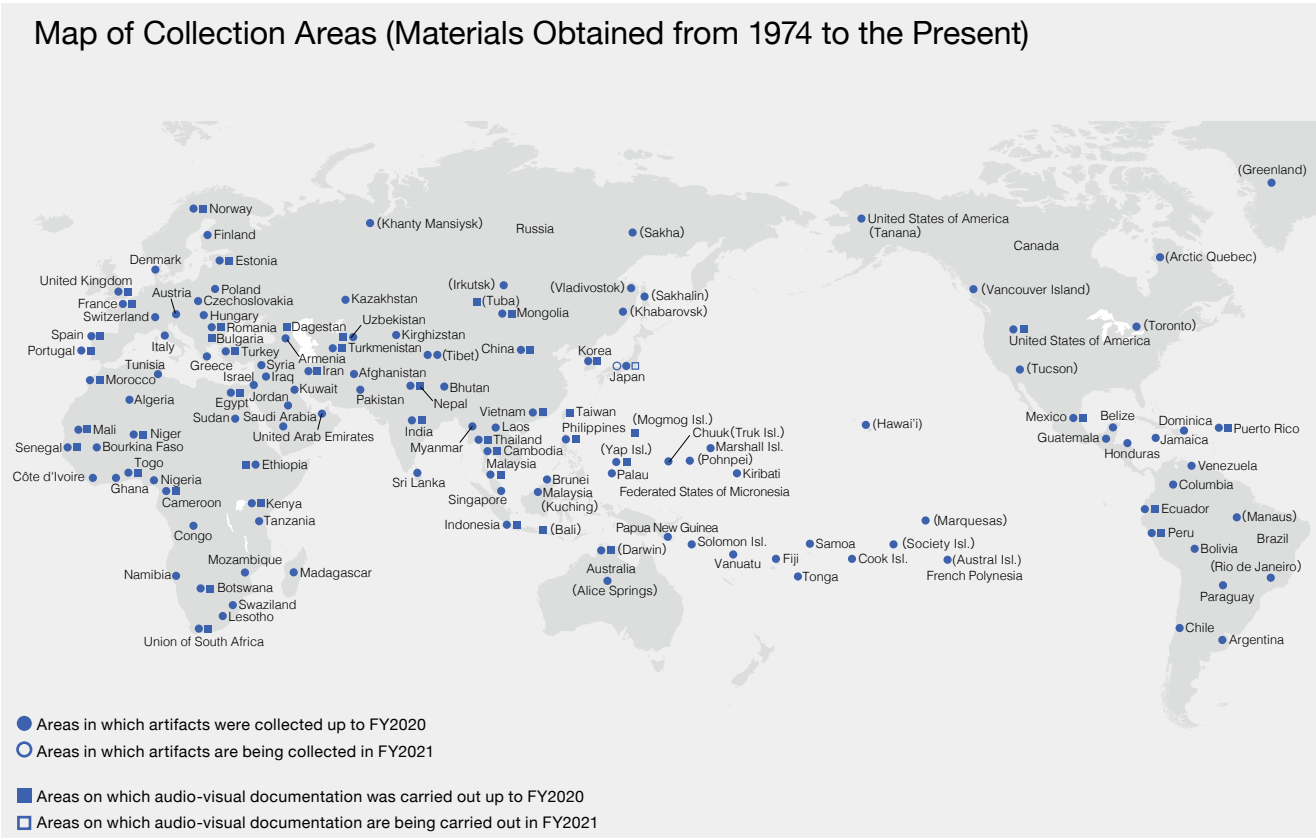
Promotion of Collaboration and Cooperation with Research Organizations in Japan

To promote collaboration, cooperation and joint research with universities, research organizations and academic associations in Japan, agreements are concluded following consideration. In March 2021, the agreement was concluded with Kanazawa College of Art.

Name of the Institutes	Date of Agreement	Summary of the Agreement
Kanazawa College of Art	March 22, 2021	Based on the Heisei Hyakukouhishou collection database, the status and use of databases in higher education are verified. Educational materials for higher education were put to practical use by linking them to social businesses
Institute for the Study of Japanese Folk Culture, Kanagawa University	March 26, 2020	Contribution to academic research, education, and social development
The Society for Research in Asiatic Music	November 3, 2019	Contribution to the sustainable development of music culture and the elaboration of research on music culture
Osaka Prefectural Government	August 28, 2019	Contribution to improved partnership in the field of sign language and development and enhancement of both sides
The Japan Society for the Conservation of Cultural Property	November 26, 2018	Contribution to academic research, education, and social development
The Japan Society for the Exhibition Studies	November 19, 2018	Development and extension of science and technology related to preservation of cultural assets
Kyoto University of the Arts	March 19, 2018	Contribution to academic research, education, and social development
Osaka University	March 17, 2018	Contribution to academic research, education, social contribution, and development of other activities
Yamagata University	February 16, 2018	Contribution to academic research, education, and social development
Graduate School of Humanities and Faculty of Letters, Kobe University	July 15, 2016	Academic exchange on research education
Research Institute for Languages and Cultures of Asia and Africa, Tokyo University of Foreign Studies	November 25, 2015	Academic research, collaboration, and cooperation related to language and culture around the world
The Osaka Aquarium Kaiyukan	November 19, 2015	Contribution to society, collaboration, and cooperation through promotion of cooperation between businesses and universities, and advancement of academic research and research outcomes
Osaka Institute of Technology	March 23, 2015	Academic research and collaborative cooperation related to information media digital contents
Ritsumeikan University	April 10, 2014	Academic research and collaborative cooperation related to Food
Kanazawa University	March 23, 2014	Organizational system strengthening based on collaboration and cooperation of both institutions
Japanese Society of Cultural Anthropology	February 27, 2008	Promotion of utilization of research collaboration, research exchange, and mutual research outcomes. Contribution to the development and spread of academic matters in human society

Materials and Databases

The Museum has collected and stored a vast amount of materials and information concerning ethnology and anthropology for researchers inside and outside the country, and has made them available to society through exhibitions and other activities. To carry out these activities efficiently, the Museum has been trying to develop better ways to collect and manage materials, organize and provide information, create database systems and contents, hold exhibitions, and implement various other activities.



The Museum Collection of Artifacts and Other Materials as of March 31, 2021

Artifacts (registered and unregistered)	345,143	Books and Periodicals	
From abroad	179,264	Books (Including bound magazines)	686,283
From Japan	165,879	Japanese materials	270,428
		Foreign language materials	415,855
Audio-visual Materials	72,698	Journals	17,232
Moving image	8,277	Japanese periodicals	10,162
Sound recordings	64,421	Periodicals in other languages	7,070
Human Relations Area Files (HRAF)			
Area files (ethnic groups)	437 files		
Original texts	8,895 volumes		
* as of April, 2021			
eHRAF World Cultures			
Area files (ethnic groups): 331 Original texts: 6,347			
eHRAF Archaeology (Archaeological document-oriented database of prehistoric age)			
Area files (ethnic groups): 106 Original texts: 2,548 142,794 page			

List of Databases as of March 31, 2021

Databases of research resources held in the Museum and outcomes of research projects are made and open to the public.
(For each database description, the numerical value(s) in brackets at the end means the number of records contained in it. Databases with an asterisk are for use only inside the Museum.)

Artifacts

- Artifact Catalog**
Basic information on the artifacts related to economic activities, everyday life, rituals, and manufacturing tools held in the Museum. Data includes objects' names, images, dimensions and weight, place, culture, and the year of acquisition. [286,507]
- Detailed Information on Artifacts in the Catalog**
Details about the artifacts held in the Museum, such as their local names and translation, images, materials used in their construction, dimensions and weight, when, where and how they are created or used and by whom, and the place and date of collection. [Inside the Museum: 286,552, including 80,678 records open to the public]
- Published References to Artifacts in the Museum**
Bibliographic information on published references to artifacts held in the Museum. [76,039]
- Korean Daily Commodities Collection**
Information (including images) on all daily commodities owned and used by a family in Seoul, South Korea. For each item, its location in their apartment, manner of acquisition, and the family's memories about it are recorded. [7,827]
- The George Brown Collection (Japanese and English versions)**
Basic collection information (including images) for materials collected by George Brown, a missionary and ethnographer who worked in the Pacific Islands from the late 19th century to the early 20th century, and now held in the Museum. [2,992]
- Prints by Indigenous Peoples of Canada ***
Basic information and description (including images) on our collection of typical prints created by indigenous peoples of Canada, most of which were displayed in our special exhibition *Voices from the Land, Visions of Life: Beauty Created by the Indigenous Peoples of Canada* in 2009. [158]
- The Minkpu Collection of Tibetan Icons and Amulets**
Basic information about a wooden religious image of a white cat included in the Tibetan Buddhist painting collection stored by Minpaku and protective charms of traditional Tibetan Buddhism and Bon. [1,439]

Audio-Visual Materials

- Visual Materials Catalog**
Information on our collections of movie films, videotapes and DVDs (photographs excluded). [8,277]
- Videotheque**
Information on visual contents provided by the *Videotheque* System in the main exhibition hall of the Museum. It is searchable by keywords as well as by the menu of a Videotheque booth. [824]
- Performing Arts Film**
Information (including videos) on film records of music, dance and theater that the Museum has made at various places in the world since 1982. Videos are available only inside the Museum. [849]
- The Matsuo Minoru Postcard Collection**
Information (including images) on picture postcards bought by MATSUO Minoru in places visited during his service in the Japanese Navy from 1919–1923. [170]
- Photograph Collection of the Kyoto University Scientific Expeditions**
Photographs taken by the Kyoto University Scientific Expedition to the Karakoram and Hindukush in 1955, by the Tonga Expedition of Kyoto University in 1960, by the Kyoto University African Scientific Expedition from 1961–1967, and by the Second Kyoto University Europe Scientific Expedition in 1969. [Inside the Museum: 42,195 including 22,361 records open to public]
- The Umesao Tadao Photo Collection ***
Photographs taken by UMESAO Tadao, the first director general of the National Museum of Ethnology, during his fieldwork at various places in the world. [35,481]
- Photographs on Aboriginal Australian Culture ***
Photographs of various scenes including ceremonies, daily life and landscapes in Aboriginal Australia from 1980–2004 taken by KOYAMA Shuzo, Professor Emeritus, National Museum of Ethnology. [7,999]
- The Asaeda Toshio Collection ***
Photographs of people, animals and plants in the Pacific Islands taken by ASAEDA Toshio when he visited there in the 1930s as a member of several academic investigation teams. [3,966]
- Photographs of Maritime Peoples of Indian and Western Pacific Ocean: The Ohshima George Collection**
Photographs taken by OHSHIMA George, during his fieldwork in Asia and Oceania from 1967–1991. [Inside the Museum: 8,842 including 7,889 records open to the public]
- Photographs of Cameroon, Africa: The Hata Nobuyuki Collection**
Photographs taken by HATA Nobuyuki, Professor Emeritus, National Museum of Ethnology, during his fieldwork mainly in the Republic of Cameroon from 1969 to early 1990s. [6,530]
- Morihiro OKI's Photographs of India**
Photographs taken by a photographer OKI Morihiro in various places in India and Nepal from 1977–1996. The database includes photographs focused on rituals, festivals, folk paintings, performing arts, artifacts, and everyday life. [Inside the Museum: 22,120 including 21,971 records open to the public]
- Nepal Photo Database (Japanese and English versions)**
Photographs taken by TAKAYAMA Ryuzo, a graduate student of Osaka City University at that time, and other members of the Japanese Scientific Expedition for Northwestern Nepal in 1958, and information (including images) on artifacts collected by the expedition and now held in the Museum. [3,879]
- Photographs on Northwestern Nepal and Manaslu ***
Photographs taken by the Japanese Scientific Expedition for Northwestern Nepal from 1958–1959, partly including ones probably taken by the science team of the first Japanese Alpine Club Manaslu Expedition in 1953. They were part of materials of the former Ministry of Education Historical Archives transferred to the Museum. [620]
- Ethnographic Images of the Spirit Dance in Thailand ***
Photographs and videos of the Spirit Dance in Thailand shot by TANABE Shigeharu, Professor Emeritus, National Museum of Ethnology. The photographs can be searched and viewed by category, place, and ritual host of the Spirit Dance, and are also related to one of the research reports in Thai made about the dance. [Photographs: 10,082, Research reports: 41]

- Photographs from the Group of the Synthetic Research of Cultures of Southeast Asian Countries ***
Photographs with related information taken by the research group of the Synthetic Research of Cultures of Southeast Asian Countries during the 1st and 2nd missions out of three missions from 1957–1964. [4,393]
- The World of Swidden Agriculture: Koumei Sasaki's Perspective ***
Photographs on swidden agriculture in Japan taken by SASAKI Koumei, former director general of the National Museum of Ethnology, during his fieldwork. [454]
- Audio Materials Catalog**
Information on our collection of records, CDs and audio tapes. [64,421]
- Itemized Information on Audio Records in the Catalog**
Piece-by-piece information on music, and episode-by-episode information on traditional folktales records in our collection of audio materials. [351,802]

Library Materials

- Book and Periodical Catalog**
Bibliographic and holdings information about the books (including microfilms, etc.) and periodicals held in the Museum Library. [Books: 636,767 Periodical Titles: 17,254]
- Umesao Tadao: Written Works (1934–)**
Comprehensive catalog of written works from articles and books to endorses on the belly bands since 1934 by UMESAO Tadao, the first director general of the National Museum of Ethnology. [6,974]

Languages

- The Nakanishi Collection: World Literary Materials**
Information (with images of letter samples) on books, newspapers, manuscripts, and artifacts written in various languages and writing systems collected from all over the world by the late NAKANISHI Akira, former president of Nakanishi Printing Co., Ltd. [2,729]
- The Yoshikawa Database of Materials for a Sumerian Lexicon**
Digitized notebooks with keywords for Sumerian language studies compiled by YOSHIKAWA Mamoru, Professor Emeritus, Hiroshima University. [Keywords: 33,450 Pages: 40,596]
- Talking Dictionary of Khinina-ang Bontok**
An electronic dictionary of the Khinina-ang Bontok language spoken in Mountain Province, the Philippines, compiled by Lawrence A. Reid, Researcher Emeritus, University of Hawai'i. It contains image and sound data, as well as information typically found in a printed dictionary. [Headwords: 11,220]
- Japanese Traditional Folktales: The Inada Koji Collection**
Information (including sound data) on Japanese traditional folktales, documented by INADA Koji at Kyoto Women's University and his group in 29 prefectures of Japan from 1967–1978 (446 tapes, about 190 hour recording). Sounds are available only inside the Museum. [3,696]
- rGyalrongic Languages (in English and Chinese)**
Database of rGyalrongic Languages, spoken in northwestern Sichuan Province, China, compiled by NAGANO Yasuhiko, Professor Emeritus, National Museum of Ethnology and Dr. Marielle Prins. It contains 425/1200 lexical items and 200 sentences for 83 dialects/languages. It also contains sound data. [Words: 41,078 Sentences: 15,706]

Clothing Culture

- Clothing and Accessory Collection**
Detailed information and images of clothing materials and accessory artifacts held in the Museum, and field photographs. [32,285]
- Publications Concerning Clothing Culture**
Index of periodical articles and books that concern the culture of costumes and clothing. This database contains the following items: 1) Japanese periodical articles (current), 2) Japanese periodical articles (before the end of World War II), 3) Foreign language periodical articles, 4) Japanese books, 5) Foreign language ethnographies. [183,616]
- Chronology of Clothing Culture in Japan 1868–1945**
A digital chronology of clothing culture in Japan from 1868–1945 when western style clothing was not yet common. It consists of information on events, contemporary conditions, illustrations, and memoirs which were collected from newspapers and clothing magazines in that period. [14,514]
- Image Database of Japanese Clothing Culture in the Modern Age**
Image database on acculturation of clothing culture in Japan from 1868-1945 when Japanese style clothing was as popular as western style one. It includes images found in illustrations of newspaper novels and books, photographs, and posters in that period. [6,764]

Facts, etc.

- Research Reports of Materials Located in Japan ***
Location information on persons and materials related to folklore and ethnology in Japan, containing 1) artifacts, 2) persons who disseminate traditional technologies, 3) visual materials, and 4) publications. This database was constructed based on the *Research Reports* compiled by researchers appointed by the Museum and published in 1980–2003 by the Museum. [21,373]
- Indigenous Architecture Restored by 3DCG: Wooden Buildings in Insular Southeast Asia**
Information on wooden buildings which has been investigated by SATO Koji, Associate Professor, National Museum of Ethnology, at various places in Southeast Asia since 1981. GIF animations derived from three-dimensional computer graphics takes us around the inside and outside of buildings. [Locations: 38, Buildings: 61]
- Cultural Heritage Recording Memories of Tsunami: Database of Temples, Shrines and Stone Monuments**
Information (including images and maps) on temples, shrines, stone monuments and tablets conveying memories of tsunam in coastal area of Japan. [470]
- The Heisei Hyakko-Hisho Collection**
Information about "the Heisei Hyakko-Hisho," a compilation of samples prepared by the Kanazawa municipal government and Kanazawa College of Art by collecting and organizing samples showing the processes and techniques, product samples, production tools, and materials for crafts from regions across Japan (image included). [553]

Number of Visitors in FY2020

Annual Number of Visitors

Total number of visitors	87,076	Adults	51,625
Daily average	364	Students	32,883
Total number of visitors since the establishment of the Museum	11,567,195	Children	2,568
Special Exhibition			
“Treasures of Indigenous Peoples” October 1 – December 15, 2020	25,611		
Thematic Exhibition			
“UMESAO Tadao's 100th Anniversary: The Front-runner of Intellectual Production” September 3 – December 1, 2020	31,297		
Traveling Exhibition			
“REGNUM IMAGINARIUM: Realm of the Marvelous and Uncanny” June 23 – August 16, 2020 Hyogo Prefectural Museum of History	14,016		
Cooperative Exhibitions			
“Shifting Cultivation from the perspective of Komei SASAKI: from Itsuki-mura to the world” October 3 – December 13, 2020 Historia Terrace Itsukidani	943		
“UMESAO Tadao's 100th Anniversary: The Front-runner of Intellectual Production” January 13 - March 14, 2021 The Kyoto University Museum	1,298		

Special Exhibitions

Exhibition Title	Period	Exhibition Title	Period
The Great Andes Civilization: Inca, the Reviving Empire of the Sun	Sept. 14 – Dec. 12, 1989	More Happy Every Day: The World of Bricolage Art	Mar. 17 – June 7, 2005
Masks in Equatorial Africa: Hidden Forest Spirits*	Mar. 15 – May 31, 1990	Fashioning India	Sept. 8 – Dec. 6, 2005
The E.S. Morse Collection: Meiji Folk Crafts that Crossed the Pacific	Sept. 13 – Dec. 4, 1990	Minpaku Kids-World: Objects as Ties between Children and Their Society	Mar. 16 – May 30, 2006
Engelbert Kämpfer: The Genroku Period Viewed by a German*	Feb. 7 – Apr. 16, 1991	Arabesque of Batik Designs and Techniwues: From Java to the World	Sept. 7 – Dec. 5, 2006
Greater India: Deities and Man in the Hindu World	Aug. 1 – Nov.5, 1991	Pilgrimage and Sacred Places: A Voyage of Self Discovery	Mar. 15 – June 5, 2007
Daghestan, Crossroads of Civilization: Ethnic Arts of the Caucasus*	Mar. 12 – May 19, 1992	The Great Ocean Voyage: YAKA MOANA and Island Life Today	Sept. 13 – Dec. 11, 2007
Aboriginal Australia: Fifty Thousand Years of Hunters and Spirits	Sept. 10 – Dec. 8, 1992	The Profound Earth: Ethnic Life and Crafts of China	Mar. 13 – June 3, 2008
Asia Viewed by Torii Ryuzo, a Pioneer of Ethnology*	Mar. 11 – May 14, 1993	SELF and OTHER: Portraits from Asia and Europe	Sept. 11 – Nov.25, 2008
Ainu Moshiri: The Ainu World Viewed through Their Designs	June 10 – Aug. 17, 1993	When Japan's Tea Ceremony Artisans Meet Minpaku's Collections: Creative Art in Perspective	Mar. 12 – June 14, 2009
Javanese Cotton Print: A World of Diverse Traditions	Sept. 9 – Nov. 30, 1993	Voices from the Land, Visions of Life: Beauty Created by the Indigenous Peoples of Canada	Sept. 10 – Dec. 8, 2009
Indigenous Peoples and Cultures in Taiwan*	Mar. 10 – May 24, 1994	Africa in the Works of El AnatsuiA Fateful Journey	Sept. 16 – Dec. 7, 2010
Woven Flowers of the Silk Road: An Introduction to the Carpet Heritage of West Asia and Central Asia	Sept. 8 – Nov.29, 1994	Umesao Tadao: An Explorer For the Future	Mar. 10 – June 14, 2011
Music and Musical Instruments in Latin America*	Mar. 16 – May 30, 1995	Devotion to the Arts of Living Daily Life Among the Ainu of the Kurile, Sakhalin and Hokkaido Islands: Objects from the Late 19th - Early 20th Century Collections of Ethnological Museums in Germany and Japan	Oct. 6 – Dec. 6, 2011
Weaving Color as Culture: The Maya Today	Sept. 14 – Nov. 30, 1995	“Modernologio” Now: Kon Wajiro's Science of the Present	Apr. 26 – June 19, 2012
Japan through the Eyes of Siebold and His Son	Aug. 1 – Nov. 19, 1996	The Warp and Weft of Weaving: Handlooms and Textiles of the World	Sept. 13 – Nov. 27, 2012
Images of Other Cultures: From the British Museum Collection	Sept. 25, 1997 – Jan. 27, 1998	Zafimaniry Style: Life and Handicrafts in the Mist Forest of Madagascar	Mar. 14 – June 11, 2013
What is Inside? Forays and X-rays into Ethnographic Objects*	Mar. 12 – May 26, 1998	Shibusawa Keizo Memorial Project Attic Museum	Sept. 19 – Dec. 3, 2013
Mongolia: The Rise of Nomadic Culture	July 30 – Nov. 24, 1998	The Power of Images: The National Museum of Ethnology Collection	Sept. 11 – Dec. 9, 2014
Cultural Heritage of the South Pacific: The George Brown Collection*	Mar. 11 – May 31, 1999	Food Culture in Korea and Japan: The Tastes of NANUM and OMOTENASHI	Aug.27 – Nov.10,2015
Ethnic Cultures Abroad: People Moving, Cultures Mixing	Sept. 9, 1999 – Jan. 11, 2000	Ishuretsuzo, the Image of Ezo: Tracing Persons, Things and the World	Feb.25 – May.10,2016
Theater at the Museum: The Expressive Body	Mar. 18 – May 14, 2000	Amazing show tents in Japan	Sep. 8 – Nov. 29, 2016
Ethnology and the Rise of Cinema: From Shadow Theater to Multi-Media	July 20 – Nov. 21, 2000	Beads in the World	Mar. 9 – June 6, 2017
Ethnology of Life in the Taisho and Showa Periods: Shibusawa Keizo and the Attic Museum	Mar. 15 – June 5, 2001	Revisiting Siebold's Japan Museum	Aug. 10 – Oct. 10, 2017
The Sea Otter and Glass Beads: Trade of Indigenous Peoples of the North Pacific Rim	Sept. 20, 2001 – Jan. 15, 2002	A "Tower of the Sun" Collection: Expo '70 Ethnological Mission	Mar. 8 – May 29, 2018
Seoul Style 2002: Life as It Is with the Lee Family	Mar. 21 – July 16, 2002	Transmitting Art and Craft: Japanese Industrial Design Originating in Tohoku	Sep. 13 – Nov. 27, 2018
Wrapping Culture: Furoshiki and Wrapping Cloths of the World	Oct. 3, 2002 – Jan. 14, 2003	Toys Expo: Children in Modern Japan	Mar. 21 – May 28, 2019
Mandala Deities in Tibet and Nepal	Mar. 13 – June 17, 2003	REGNUM IMAGINARIUM: Realm of the Marvelous and Uncanny	Aug. 29 – Nov. 26, 2019
A West African Story-telling Village	July 24 – Nov. 25, 2003	“Treasures of Indigenous Peoples”	Oct. 1 – Dec. 15, 2020
Messages from the Ainu: Craft and Spirit	Jan. 8 – Feb. 15, 2004	“Local cultures assisting revitalization: 10 years since the Great East Japan Earthquake”	Mar.4 – May. 18, 2021
Multietnic Japan: The Life and History of Immigrants	Mar. 25 – June 15, 2004		
The Arabian Nights	Sept. 9 – Dec. 7, 2004		

*The distinction between a special exhibition and a thematic exhibition was abolished in 2001 and now all of the temporary exhibitions are called “Special Exhibitions”.

Internet

Website <https://www.minpaku.ac.jp/>

The home page features Minpaku research, exhibits, and other activities, along with information on graduate education, publication, and materials in its library and collections.

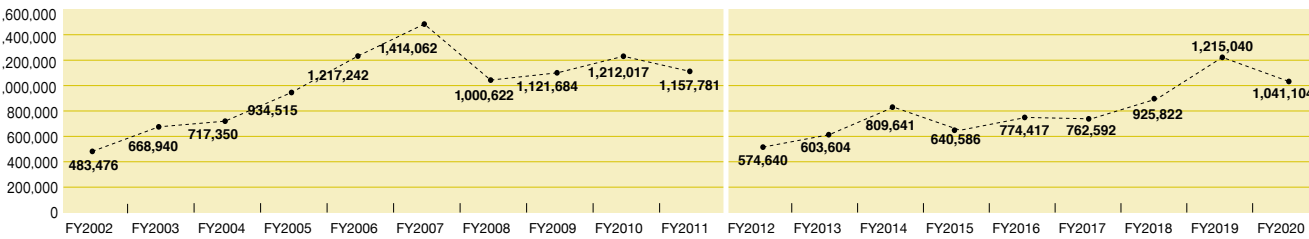
E-mail magazine <https://www.minpaku.ac.jp/museum/enews>

To provide updates on the latest research, special or thematic exhibitions and various events, like Minpaku Seminars, “Minpaku e-news”, a monthly newsletter is emailed to subscribers.

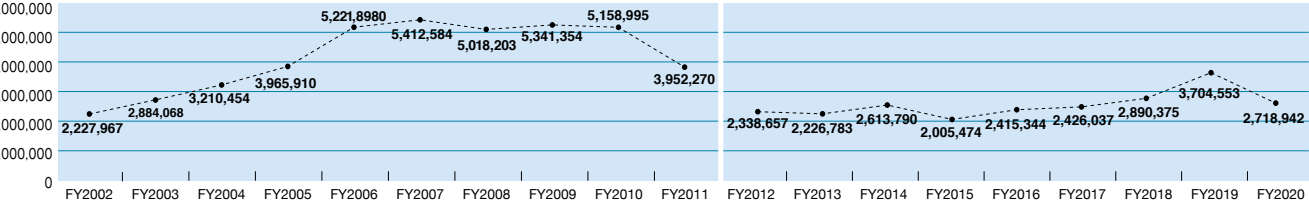
Social Media Facebook <https://www.facebook.com/MINPAKU.official>
Twitter <https://twitter.com/MINPAKUofficial>
YouTube <https://www.youtube.com/MINPAKUofficial>
Instagram <https://www.instagram.com/MINPAKUofficial>

Using various social media provides opportunities to link Minpaku with people interested in cultural anthropology and ethnology, and also to give information on research and museum activities.

Number of Visitors to the Minpaku Website 1,041,104 (FY2020)



Number of Web Pages Accessed 2,718,942 (FY2020)



*Counting procedures changed starting in 2012.

*The figures for December 19, 2018 to January 11, 2019 are not included in the total.

Publicity through the Public Media

Publicity is developed through the mass media to convey information about Minpaku’s activities. A program entitled “Window of Research” was launched through the “Meeting for Media and Minpaku Staff”, held monthly on every third Thursday. The Museum has been mentioned in a total of 777 progarms and articles: 59 on TV, 25 on radio, 480 in newspapers, 110 in major magazines, 38 in minor magazines and 63 in other media. Minpaku has also been featured in regular radio broadcasts and newspaper series.

“Tabi, Iroiro Chikyujin [Journeys: Various People on the Earth]”
Published every Saturday since April 2009 in the evening edition of the Mainichi Shinbun newspaper.
Published from April 2005 to March 2009 as a series entitled “The Study of Other Cultures”.

“Deep Minpaku-tankentai (comments about collections from the essayist)”
Published every Thursday since December 2019 in the Shukan Shincho.

Materials for the General Public

Publicity

MINPAKU Anthropology Newsletter
Gekkan Minpaku [Minpaku Monthly]
Minpaku Calender

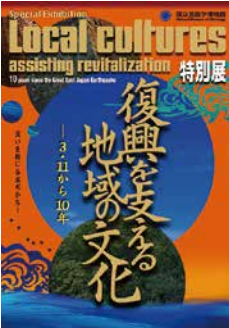
Guidebooks and Catalogs

Special Exhibition catalogue
“Treasures of Indigenous Peoples”

Special Exhibition catalogue
“Local cultures assisting revitalization: 10 years since the Great East Japan Earthquake”

Meeting with the Press

A program entitled “Window of Research” was launched through the “Meeting for Media and Minpaku Staff”, held monthly on every third Thursday to convey information about Minpaku’s activities.





NIHU carries out research on the human sciences and aims to create new value systems that will genuinely enrich our lives.

NIHU is one of the four inter-university research institute corporations in Japan. It consists of six inter-university research institutes that specialize in humanities research. Each of the institutes is deeply involved in foundational research in their field as both a domestic and international research center. The six institutes interact in a complementary fashion and carry out research that transcends the frameworks of traditional disciplines. They also cooperate with other research organizations domestically and internationally in their attempt to identify and solve modern day issues.

Research and Communications

In 2016, two new centers, the Center for Transdisciplinary Innovation (CTI) and the Center for Information and Public Relations (CIP) were established to improve governance at NIHU.

The two Centers promote international collaborative research by building a research network around the six institutes. At the same time, the Centers communicate their research globally and are committed to developing next generation scholars.

Center for Transdisciplinary Innovation (CTI)

CTI strengthens mutual cooperation between the six institutes and leads NIHU's Transdisciplinary Projects that collaborate with universities and research institutions in Japan and overseas.

NIHU Transdisciplinary Projects

Institute-based Projects

REKIHAKU: Constructing Integrated Studies of Cultural and Research Resources, and Renovating Sharing Infrastructures of Research Resources in Japanese History and Cultures

NIJL: Project to Build an International Collaborative Research Network for Pre-modern Japanese Texts

NINJAL: A New Integration of Japanese Language Studies based on Diverse Language Resources

NICHIBUNKEN: Historical and International Research into Popular Culture to Pursue New Images of Japan

RIHN: Transformation towards Sustainable Futures in Complex Human-Nature Systems in Asia

MINPAKU: Info-Forum Museum for Cultural Resources of the World

Multidisciplinary Collaborative Projects

Change of Local Communities and Reconstruction of Community Cultures after Disasters in Japanese Archipelago

Rethinking Eco-health in Asia

Development of a Field of Comprehensive Bibliographical Studies from an Interdisciplinary Perspective

Network-based Projects

NIHU Area Studies
Northeast Asia Modern Middle East South Asia

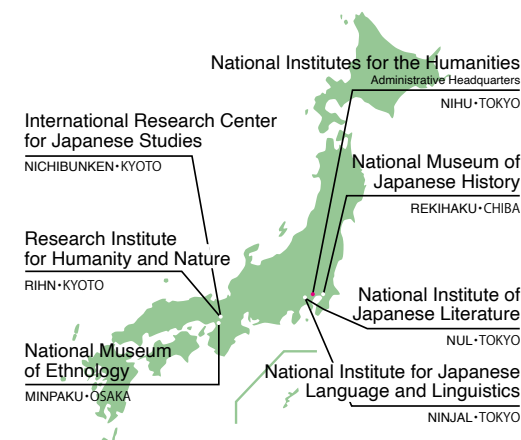
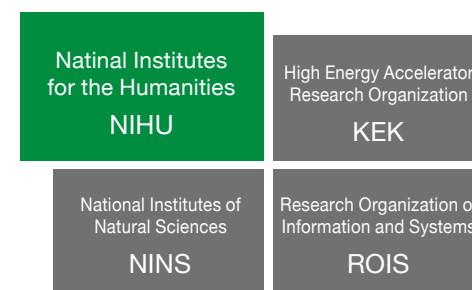
Japan-related Documents and Artifacts Held Overseas: NIHU International Collaborative Research and Utilization

Insights into Japan-related Overseas Artifacts and Documents from 19th-century Europe, Research and Use: Developing the Foundation for International Collaboration in Transmitting Japanese Culture

Research, Conservation and Utilization of the Marega Collection Preserved in the Vatican Library

A Survey, Study and Use of the Japan-related Documents and Artifacts in North America: Socio-historical Approach to 'Modern Overseas Material Informatics'
Coordination between Projects to Make Effective Use of Research Results

Four inter-university research institute corporations, and six inter-university research institutes specializing in humanities.



Center for Information and Public Relations (CIP)

CIP consolidates data related to human cultures by gathering information and research results from researchers affiliated with NIHU, and important documents and materials from the archives of the six institutes. The materials are made available to the public.

Advanced Collaboration Systems

nihuINT <https://int.nihu.jp/?lang=en&>

Comprehensive search engine for databases operated by the six NIHU institutes as well as other organizations.

Research Resource Databases and Publications

NIHU Repository
Cloud-based NIHU repository giving users comprehensive access to research papers from the six NIHU institutes.

Researcher's Profile <https://nrd.nihu.jp/search?m=home&l=en>
Comprehensive database containing information on researchers throughout NIHU.

Portal site for Japanese Studies <https://guides2.nihu.jp/>
English Resource Guide for Japanese Studies and Humanities in Japan.

NIHU Magazine https://www.nihu.jp/en/publication/nihu_magazine
A bilingual (Japanese and English-language) publication that covers topics such as the latest research trends, results and activities at NIHU.

NIHU Symposiums

NIHU organizes symposiums for the general public in order to share the comprehensive human culture related research resources and results it has accumulated.

Industry-Academia Collaborations

NIHU collaborates with industry and other partners to give back its fruits of research to society.

Joint symposium with Ajinomoto Foundation for Dietary Culture -"Food sustainability: Exploring the nature of diet geared to the future" (recorded)

Joint lecture with Otemachi Academia

Joint symposium with the Japan Forum for the Cultivation of Insight from the Humanities

Inter-University Research Institute Network Project to Preserve and Succeed Historical and Cultural Resources

We promote document survey and data recording, the establishment of a wide support system, historical and cultural materials conservation projects that preserve materials and study preservation methodologies. Furthermore, we aim to inherit and build historical cultures within local communities by making use of materials, developing educational programs, and disseminating information in Japan and overseas. This program is run by NIHU (lead organization, Rekihaku), Tohoku University, Kobe University at the core, and in cooperation with "Shiryō Net," a university based research activity to preserve old historical documents.

NIHU Interactive Communication Initiative

We aim to pioneer a "visualization and advancement cycle of cutting-edge research at museums and exhibits"; which is about visualizing state-of-the-art research on human culture in museum contexts and exhibits and promoting research through the cooperation of multiple fields, academia and society. This program is run by NIHU's six institutes in collaboration with universities and research institutions across Japan.

Liberal Arts Communicator Training Program

In the 2017 academic year, we have started a training program for humanities researchers that fosters their skills to communicate humanities research to a lay audience and become specialists that will be able to incorporate and address societal needs in their research. Our liberal arts communicators will utilize various resources and outlets to bridge between academia and society. Through this program we hope to develop talented researchers who will contribute to the advancement of humanities, foster industry-academia relations and raise the visibility of our research activities.



Liberal Arts Communicators participating in the online annual symposium held by the inter-university research institutes.

Industry-Academia Collaborations

We collaborate with industry and other partners to give back the fruits of research to society. In the 2020 academic year, we jointly organized an online lecture with YOMIURI RESEARCH ORGANIZATION (recording is available from NIHU's YouTube), an online symposium with the Japan Forum for the Cultivation of Insight from the Humanities and a symposium with Ajinomoto Foundation for Dietary Culture titled "Food sustainability: Exploring the nature of diet geared to the future" (recorded and available from NIHU's YouTube).



A symposium with Ajinomoto Foundation for Dietary Culture (Photo: YouTube <https://www.youtube.com/c/NihuJP>).

Graduate School Education

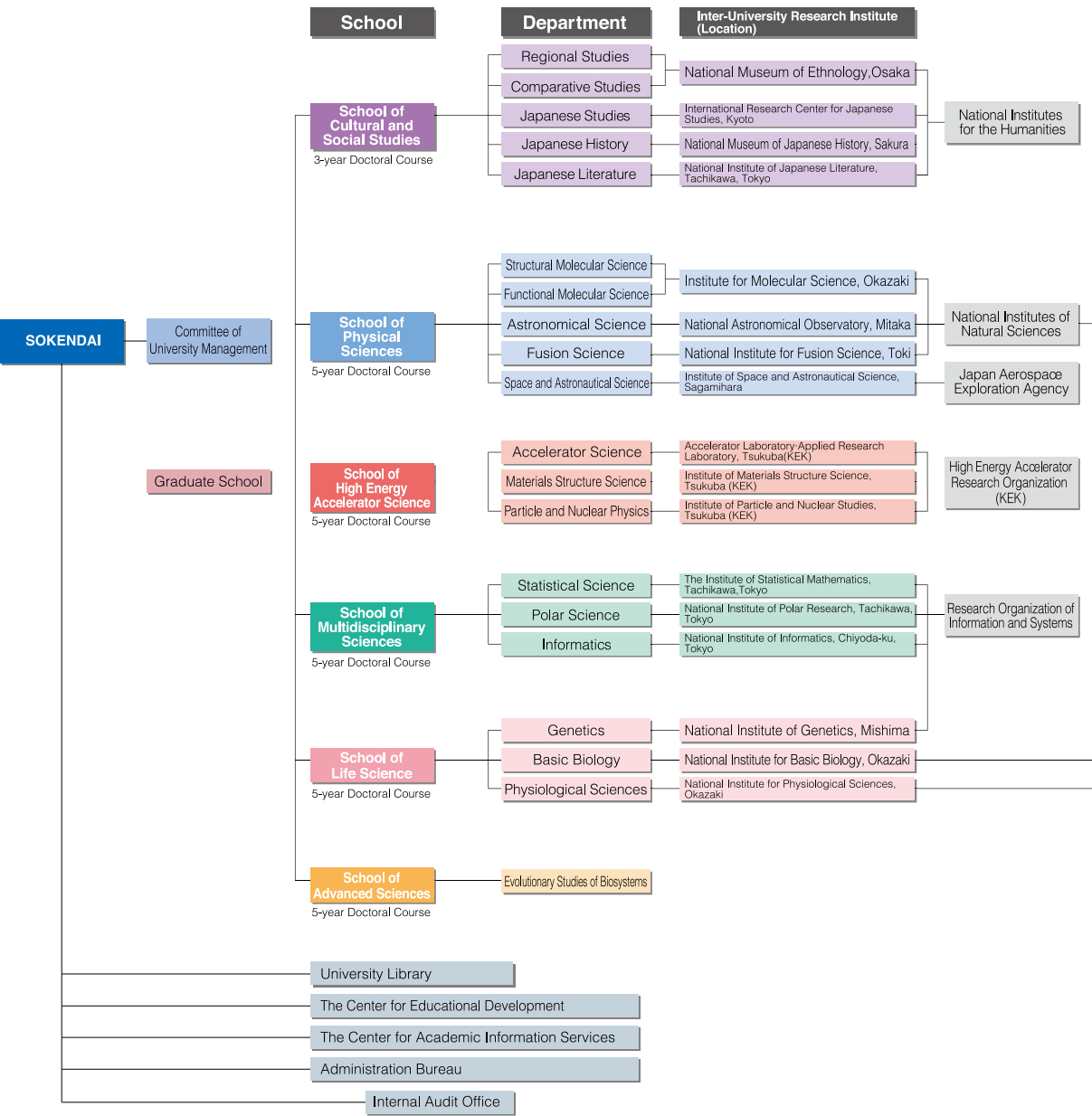
NIHU's four humanities research institutes offer courses at the Graduate University for Advanced Studies (Sokendai). The five graduate (doctoral) courses are designed to take advantage of the institutes' resources and provide an array of specialized training for researchers.

Courses offered at Sokendai

- Department of Regional Studies (National Museum of Ethnology)
- Department of Comparative Studies (National Museum of Ethnology)
- Department of Japanese Studies (International Research Center for Japanese Studies)
- Department of Japanese History (National Museum of Japanese History)
- Department of Japanese Literature (National Institute of Japanese literature)

The Graduate University for Advanced Studies, SOKENDAI is a national university offering a graduate program only. By taking advantage of the close network among the 18 Inter-University Research Institutes and the joint research opportunities thus afforded, and by promoting interaction among different schools and departments within SOKENDAI and also among universities and graduate schools both domestic and overseas, SOKENDAI aims to develop researchers with the ability to think from broad, comprehensive, and global perspectives.

University Organization



The Graduate University for Advanced Studies

Our museum accommodates the School of Cultural and Social Studies (with the Department of Regional Studies and the Department of Comparative Studies) of The Graduate University for Advanced Studies, SOKENDAI. Both of these departments conduct educational and research activities taking advantage of the human resources and advanced research environment of the Inter-University Research Institutes, which are playing a leading role in promoting joint research projects around Japan.

Purpose of the Departments of Regional Studies and Comparative Studies

Educational studies are composed of lectures and instruction by individual faculty members and shared seminars by multiple faculty members. Two types of shared seminars are offered: the basic seminar called the “Freshman Seminar” which is mainly for freshmen and the “Thesis Seminar” for sophomores and more advanced students focusing on instruction for thesis writing. Common subjects (advanced theory) on cultural anthropology and ethnology are also conducted primarily for first year students.

Under student exchange agreements, credits for these courses can be transferred among the Graduate School of Asian and African Area Studies at Kyoto University, the Graduate School of Human Sciences at Osaka University, the Graduate School of Intercultural Studies and the Graduate School of Human Development and Environment at Kobe University.

In most cases, students work on preparation for fieldwork during the first year, and proceed to fieldwork in the second or subsequent years under the supervision of their advisors. Then, after finishing their fieldwork, the students complete their dissertations under the individual guidance of their advisors and through participation in the “Thesis Seminar”. The purposes of educational studies in both departments are as follows:

- (i) Original research on cultural anthropology and ethnology
- (ii) Writing a thesis based on data from long-term fieldwork
- (iii) Training researchers with broad horizons and a deep sense of humanity

Number of Students as of April 1, 2021

Quota and Current Number of Students

Department	Quota	Current Students			Total
		First year	Second year	Third year	
Regional Studies	3	2	3	10	15
Comparative Studies	3	2	2	9	13
Total	6	4	5	19	28

Number of Doctoral Degrees Awarded

Academic Year	Regional Studies		Comparative Studies		Total
	By Completing Doctoral Course	By Submitting Dissertation	By Completing Doctoral Course	By Submitting Dissertation	
1991			1		1
1992					
1993			1	1	2
1994	2		1		3
1995	2		1		3
1996		3			3
1997	3		4		7
1998	4	2			6
1999					
2000	2		2	1	5
2001	1	1	2	1	5
2002	1	1		2	4
2003					
2004	2	3			5
2005	4	2		2	8
2006	2		3		5
2007	2	1	3		6
2008	1		1		2
2009		1	1	1	3
2010	2		2	3	7
2011	3		1	1	5
2012	1	1	1	1	4
2013			1	1	2
2014	2	1	2		5
2015	3	1			4
2016	1	1	1		3
2017	1		1		2
2018	1				1
2019	1		2		3
2020	1	1	2		4
Total	42	19	33	14	108

Acceptance of Overseas Researchers under the RONPAKU (Ph.D. Dissertation) Program

Grantees of the RONPAKU (Dissertation Ph.D.) Program offered by the Japan Society for the Promotion of Science (RONPAKU fellows) conduct their research under the supervision of advisors in the respective department of the Graduate School. Currently, one overseas researcher is in the program.

General Information

Hours and Closing Days

Hours	10:00 a.m. to 5:00 p.m. Entry permitted up to 4:30 p.m.
Closing days	Every Wednesday. When a national holiday falls on a Wednesday, the Museum is closed instead on the following day. The Museum is closed from December 28 until January 4 for the year-end and New Year period.

Admission Charges

	Individual	Groups (20 persons or more) and visitors eligible for discount *
Adults	¥580	¥490
College and University Students	¥250	¥200
High School Students and Younger	Free	

An additional charge may be necessary for Special Exhibitions.
Admission is free for holders of a Disabled Person’s Handbook and one accompanying person per holder.
Admission is free for members of the Japanese Society of Cultural Anthropology, International Council of Museums, and Japan Association of Museums (a membership certificate is required).
The following visitors qualify for a discounted admission charge (please present documentation); 1) Groups of 20 or more; 2) College, university, graduate, and vocational school students who use the Museum as part of their course work; 3) those who have visited the Museum within the previous three months; 4) Visitors aged 65 and over (ID required)
(If you purchase a regular Museum ticket at the entrance to the Natural and Cultural Garden, the difference will be refunded at the Museum.)

Contact Information

National Museum of Ethnology
10-1 Senri Expo Park, Suita, Osaka 565-8511, Japan
Tel: +81-6-6876-2151 Fax: +81-6-6875-0401

Website

https://www.minpaku.ac.jp/en

Information and Services

The Minpaku Associates Tel: +81-6-6877-8893 (Senri Foundatio 9:00 a.m.–5:00 p.m. on weekdays only) minpakutomo@senri-f.or.jp
The organization, Minpaku Associates was formed to support the activities of the National Museum of Ethnology and to use its facilities actively.
With cooperation of the Museum, the Minpaku Associates publishes Kikan Minzokugaku (Quarterly Ethnology) and organizes and operates “training trips,” offering opportunities for direct contact with various cultures, experience seminars, lectures, and other events.

Museum Shop (Hours: 10:00 a.m. to 5:00 p.m.) Tel: +81-6-6876-3112
Visitors can buy folk crafts from various parts of the world and books on anthropology and ethnology in the museum shop.

Restaurant (Hours: 11:00 a.m. to 4:30 p.m. Last Orders: 4:00 p.m.) Tel: +81-6-6310-0810
We serve lunch and dinner, including such dishes as hamburger steaks and omelets, and light meals and desserts. We can seat 110 diners, and our restaurant accepts reservations from small groups with a few individuals to large groups such as parties with many people. Group customers can also reserve our box lunches.



Minpaku Associates Desk



Museum Shop



Restaurant



“Ethnological Study Tours Overseas” organized by Minpaku Associates (Minpaku Tomonokai) (FY2019)

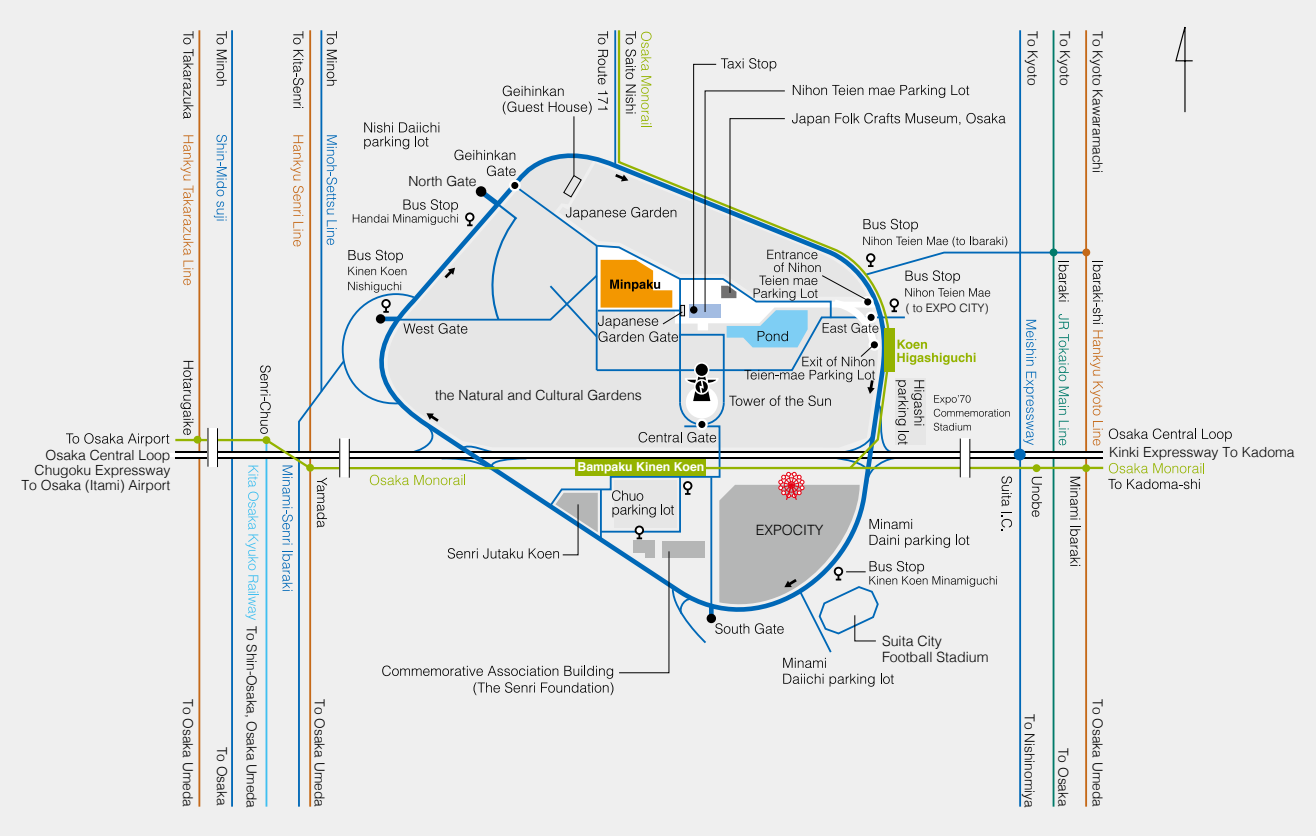


Kikan Minzokugaku [Ethnological Quarterly]

Access Information

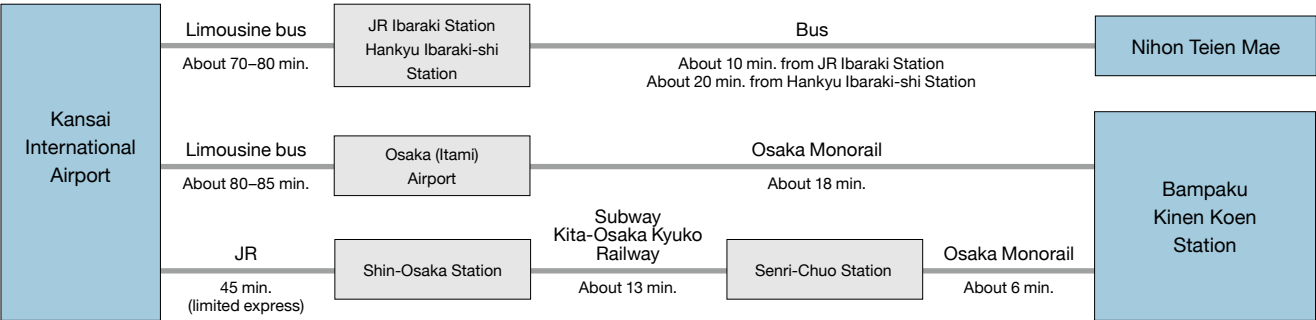
- By Osaka Monorail, from Bampaku Kinen Koen Station or Koen Higashiguchi Station it is about a 15-minute walk to the Museum through the Natural and Cultural Garden.
 - By bus, from Hankyu Ibaraki-shi Station and JR Ibaraki Station alight at Nihon Teien Mae, from which it is about a 13-minute walk to Minpaku.
 - By car, please park at one of the parking lots for the Expo’70 Commemorative Park. From the nearest pay parking lot, in front of the Japanese Garden, it is about a 5-minute walk to the Museum. Please enter the Museum through the Japanese Garden Gate.
 - By taxi, you will get dropped off in the parking lot in front of the Japanese Garden. Please enter the Museum through the Japanese Garden Gate.
- * Please buy a museum ticket at the gate of the Expo’70 Commemorative Park. Ticket holders can pass through the park at no charge.
* If you visit the Expo’70 Commemorative Park, you need to buy an entry ticket.

Map



Major Access Routes

Access routes to the Museum from airports and major railway stations are as shown below.



Survey and Guide
2021-22



National Museum of Ethnology

10-1 Senri Expo Park, Suita, Osaka 565-8511, Japan

