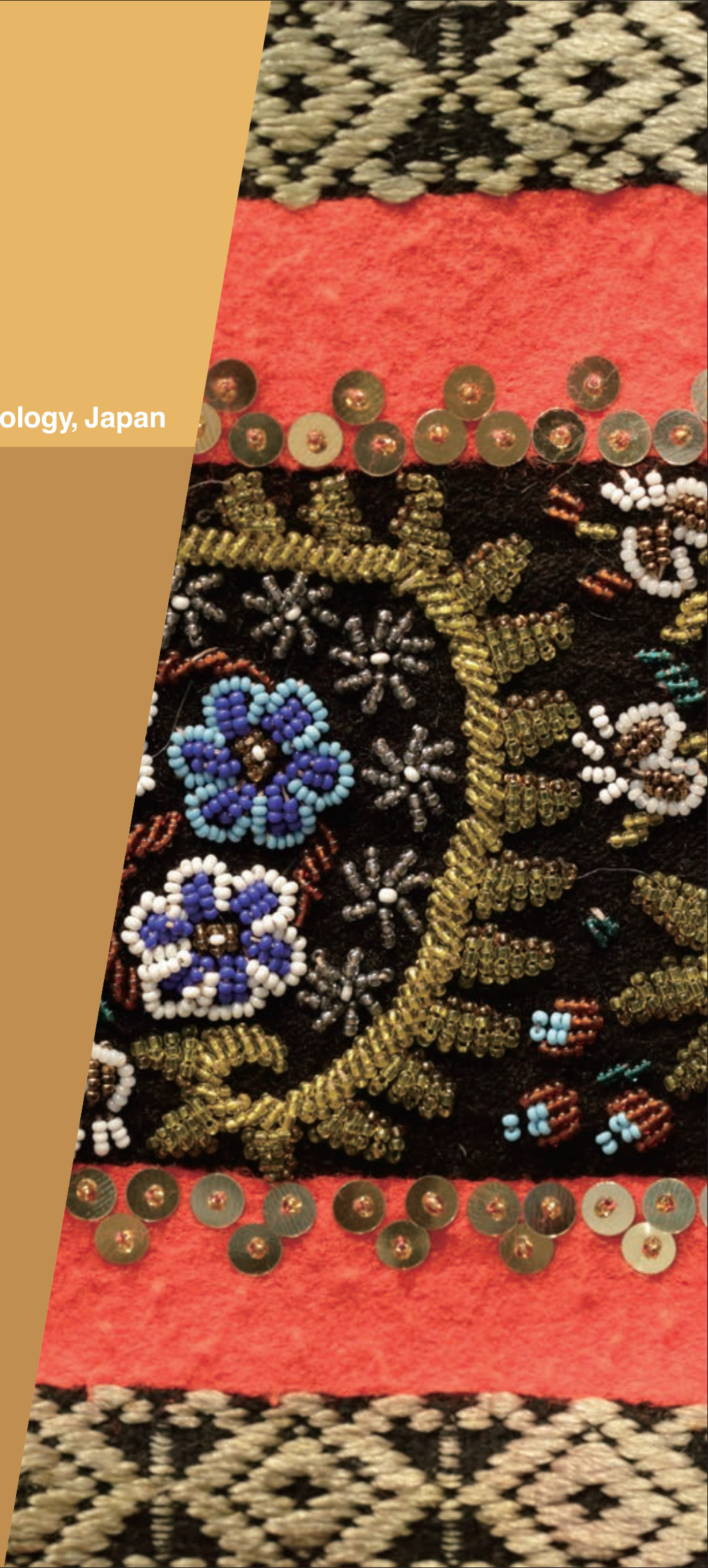


National Museum of Ethnology, Japan

Survey and Guide

2022-23





National Museum of Ethnology, Japan

Survey and Guide for 2022-23

(Fiscal Year April 1, 2022–March 31, 2023)

Contents

Preface	1
Purpose and Functions	2
Organization	3
Governing Body/Research Organization	3
Center for Cultural Resource Studies	6
Center for Academic Research Development	7
Institutional Research (IR)	7
Research Activities	8
Joint Use of the Museum	24
Joint-Use Facilities for Scientific Research	24
Library	25
Materials	26
Exhibitions	28
International Cooperation	36
Partnership between the Museum and Society	37
Data Collection	41
History	42
Former Directors-General/Professors Emeriti	43
Facilities	45
Cooperative Agreements	46
Materials and Databases	48
National Institutes for the Humanities	52
SOKENDAI (The Graduate University for Advanced Studies)	54
General Information	56



Women's Costume, Romania

Preface

In 1974, the National Museum of Ethnology, Japan (Minpaku) was founded as an Inter-University Research Institute in cultural anthropology and ethnology, equipped with one of the world's largest museum facilities. It opened to the public in 1977 at the site of the 1970 International Exposition located in Senri, Osaka.

Each researcher at Minpaku engages in fieldwork in various parts of the world to promote the investigative study of the diversity and commonality of human culture and the dynamic state of society on a global scale. Over 345,000 objects have been collected at Minpaku, constituting the world's most extensive ethnographic collection after the second half of the 20th century. Two departments of the School of Cultural and Social Studies of the Graduate University for Advanced Studies (SOKENDAI) are also based in the museum. The National Museum of Ethnology is regarded as the only anthropological institution in the world equipped with research, education, and museum facilities that can cover the entire globe.

Based on such academic resources, Minpaku continues to conduct its activities under the mission of "creating the science for global human coexistence," which helps to produce a more profound recognition of the self and the other and to present guidelines for building a convivial society.

Human civilization today is facing the most significant turning point in several centuries. Until recently, the group regarded as central ruled and controlled unilaterally the group regarded as peripheral. The dynamics of this power relationship seem to be changing now. These days, we witness that contacts, interactions, and amalgamation, including the creative and the destructive, are occurring worldwide in a bilateral manner between those two entities, one used to be regarded as central and the other peripheral.

In 2020, we were forced to confront a situation never experienced before by humanity: the almost simultaneous spread of the novel coronavirus disease (COVID-19) pandemic worldwide. This situation has compelled humans to review customary practices and rules that had been regarded as usual in daily life, i.e., the formation and state of every institution and standard established in modern history. The significance and the reasons for the existence of such institutions and standards have been re-examined. A sense of discrimination latent in society has surfaced, and new developments that divide the world are emerging.

I believe that the wisdom of cultural anthropology is needed now more than ever to establish a world where while respecting diverse cultures, we can live together by bridging the gap between different languages and cultures. The highly grave responsibilities attach to Minpaku as an international core hub of anthropology.

Minpaku is now promoting Special Research Project entitled "Ethnic Groups and Ethnicity in the Post-Nationalist Era." Amid the instability and gyrations of nation-state frameworks, ethnic groups face conflicts and divisions. This international research project has been designed to analyze and elucidate the current world situation in a multilayered manner by combining cultural anthropology and its related fields, and thus to explore guidelines for the realization of a convivial human society.

In addition, Minpaku is now carrying out a project on the "Info-Forum archives" (Full title: "Sustainable development humanities research based on the Info-Forum archives of human culture). This project aims to share information about its collection of artifacts, photographs, and videos, along with academic resources such as research papers, not only with domestic and international researchers and users but also with the people initially providing those materials. The project will continuously accumulate and analyze the newly gained insights, with efforts to promote exploration through space and time for the commonality and diversity of human cultures and their transformation.

Through these research and museum activities, the National Museum of Ethnology, Japan, is trying to establish, in a more evolved and substantial manner than ever before, the "forum of wisdom." That is a place where diverse people will enjoy having intellectual interactions, sharing their ideas, and engaging in collaborative work.

I sincerely ask for your continued cooperation and support in implementing our activities.



YOSHIDA Kenji
Director-General
National Museum of Ethnology, Japan



Purpose and Functions

Purpose

The National Museum of Ethnology conducts anthropological and ethnological research and aims to promote a general understanding and awareness of peoples, societies and cultures around the world through the collection and conservation of ethnographic materials and public exhibitions. Minpaku was established in 1974 as an Inter-University Research Institute under the “Law to amend part of the National School Establishment Law” (No. 81, 1974). In April 2004, it made a fresh start as a member of the National Institutes for the Humanities, under the “National University Corporation Act” (No. 112, 2003).

Functions

Research Institute	The Museum functions as a research institute equipped with a museum. It serves as a research center for anthropology and ethnology, providing information and research results to academic communities and the general public through publications, exhibitions, and other means.
Joint Research	As an Inter-University Research Institute, the Museum supports and organizes joint research projects with researchers from other academic institutions. Materials collected and stored in the Museum are used widely by those researchers.
Information Center	Over the years, the Museum has collected and maintained a great variety of ethnological research materials. These include artifacts, audiovisual records, books and other forms of research data. The Museum is also a repository for the Human Relations Area Files (HRAF). Information about these materials is provided to researchers via computer databases.
Exhibitions	The research results of the Museum are open to the public through exhibitions. Minpaku emphasizes the close-linkage between research and exhibition as a basic policy, and its academic staff participate in planning and organizing exhibitions. The main halls display regional and cross-cultural exhibitions. The former displays cultures and societies in major regions, such as Oceania and the Americas, whereas the latter emphasizes cultural elements such as music and language, which are shared across human societies. Thematic Exhibitions are also held occasionally. These focus on rapidly changing global situations and feature current research in cultural anthropology and ethnology. The Museum also presents, Special Exhibitions in spring and/or fall, in the Special Exhibition Hall.
Social Contributions	Also with the objective of presenting its latest research findings to the public, the Museum offers academic lecture programs, seminars, the Weekend Salon, special lectures and performances, film shows, and various workshops. The Museum also organizes intensive courses on museology and various projects for other museums as part of its international cooperation activities.
Graduate Programs	The School of Cultural and Social Studies of SOKENDAI (The Graduate University for Advanced Studies), based at the Inter-University Research Institute, is located at the Museum. It has two courses: Regional Studies and Comparative Studies. These Departments offer research training programs leading to the Ph.D. degree with the aim of producing unique professional scholars. The Museum also cooperates with other universities in training graduate students enrolled in doctoral programs.



Organization

Governing Body

as of April 1, 2022

Director-General Sixth Director-General April 2017– YOSHIDA Kenji Representation of Culture in Museum	Deputy Director-General (in charge of research, exchange and Institutional Research (IR)) HIRAI Kyonosuke Professor, Department of Globalization and Humanity	Deputy Director-General (in charge of planning and coordination) KISHIGAMI Nobuhiro Professor, Center for Cultural Resource Studies	System Coordinator NISHIO Tetsuo Professor, Department of Globalization and Humanity	Audit Office ENDO Tsuyoshi Director
---	---	---	--	--

Administrative organization

as of April 1, 2022

Office of Administration ENDO Tsuyoshi Director			Office of Information and Documentation KISHIGAMI Nobuhiro Director		ENDO Tsuyoshi Deputy Director
General Affairs Section ISSYA Hiromasa Head	Research Cooperation Section WAKAMATSU Shinichi Head	Finance Section BABA Takeshi Head	Information Planning Section MAEHARA Tadanobu Head	Information Systems and Services Section HOJO Mitsutoshi Head	

Board of Advisors

as of April 1, 2022

The advisors discuss the Museum’s management, and operational issues of critical importance, at request of the Director-General.

GOTO Akira Professor, Faculty of Humanities, Nanzan University	NAKATANI Ayami Professor, Research Institute for the Dynamics of Civilizations, Okayama University	FUKUOKA Shota Director, Department of Modern Society and Civilization, National Museum of Ethnology	NOBAYASHI Atsushi Director, Center for Cultural Resource Studies, National Museum of Ethnology
INOSE Kumie Professor, Faculty of Letters, Konan University	OKADA Hiroki Professor, Graduate School of Intercultural Studies, Kobe University	HIRAI Kyonosuke Deputy Director-General (in charge of research, exchange and (IR)), National Museum of Ethnology/Director, Center for Academic Research Development	NOBUTA Toshihiro Professor, Department of Globalization and Humanity, National Museum of Ethnology Course-Director, Department of Regional Studies, School of Cultural and Social Studies, SOKENDAI (The Graduate University of Advanced Studies)
KIGAWA Rika Head, Museum Science Section, Arts and Cultural Department, Kyusyu National Museum	TAKAKURA Hiroki Professor, Center for Northeast Asian Studies, Tohoku University	KISHIGAMI Nobuhiro Deputy Director-General (in charge of planning and coordination), National Museum of Ethnology/Director, Office of Information and Documentation	SONODA Naoko Director, Department of Advanced Human Sciences, National Museum of Ethnology
KUBOTA Sachiko President, Ashiya University/Professor Emeritus, Kobe University	TOMIZAWA Hisao Vice President, University of Shizuoka	MIO Minoru Director, Department of Globalization and Humanity, National Museum of Ethnology	UDAGAWA Taeko Director, Department of Cross-Field Research, National Museum of Ethnology
MIZUSAWA Tsutomu Director, The Museum of Modern Art, Kamakura & Hayama			

External Evaluation Committee

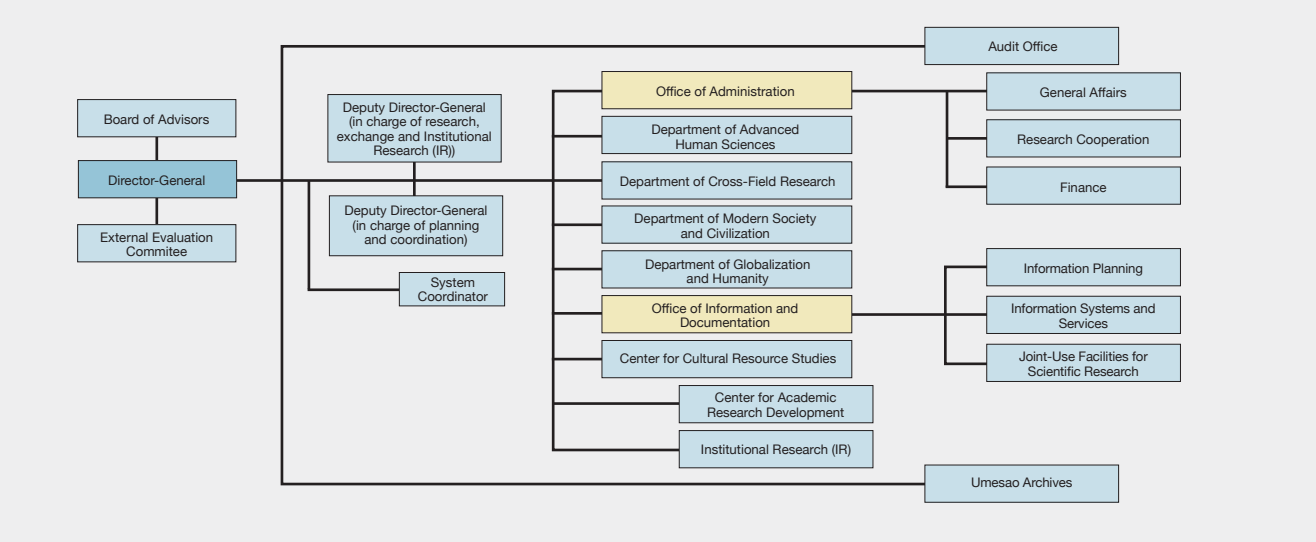
as of April 1, 2022

The committee meets to inspect and evaluate the Museum’s research and educational activities at request of the Director-General.

DEGUCHI Akira Professor Emeritus, Shimane University	KOSAKA Hajime Chairman, The Resona Foundation for Asia and Oceania	OKAZAKI Yoshiko Former President/Professor Emeritus, University of the Sacred Heart	TAKANO Akihiko Professor, National Institute of Informatics	USHIROSHOJI Masahiro Director, Kitakyushu Municipal Museum of Art
ICHIKAWA Mitsuo Professor Emeritus, Kyoto University	MAKINO Koji Deputy Director, JICA Ogata Sadako Research Institute for Peace and Development	SAKIMOTO Toshiki President, KANSAI・OSAKA 21st Century Association	TANAKA Masakazu Vice-president, Professional Institute of International Fashion	

Organization Chart

as of April 1, 2022



Research Organization as of October 1, 2022

Department of Advanced Human Sciences

SONODA Naoko Director

Professors		Associate Professors	Assistant Professors	
HIDAKA Shingo Conservation Science	SASAHARA Ryoji Folk Culture, Performing Arts; Japan	KAWASE Itsushi Visual Anthropology	OKADA Emi Ethnomusicology, South Asian Studies	HIRANO Chikako Cultural Anthropology, Indigenous Australian Studies
KIKUSAWA Ritsuko Linguistics, Austronesian Languages	SONODA Naoko Conservation Science	MARUKAWA Yuzo Informatics of Association, Information Service for Cultural Assets	SUEMORI Kaoru Conservation Science, Asian Art Studies	MIYAMAE Chisako Heritage Science, Digital Heritage
				Project Assistant Professor
				ICHINO Shinichiro Institutional Research and Evaluation

The purpose of this Department is to deepen theoretical research in the basic study of human sciences and thereby extract new academic challenges and create a new cross-disciplinary domain.

Department of Cross-Field Research

UDAGAWA Taeko Director

Professors		Associate Professors		
HAN Min Social Anthropology; China	MATTHEWS, Peter J. Ethnobotany, Prehistory, Crop Plant Biogeography; Asia, Pacific	SHINMEN Mitsuhiro Science of Religion; Eastern Europe	MATSUO-GOGATE Mizuho Cultural Anthropology, South Asian Studies	OTA Shimpei Sociocultural Anthropology; Northeast Asia
KASHINAGA Masao Ethnography of Southeast Asia; Vietnam, Tai Area	MINAMI Makito Ecological Anthropology; South Asia	UDAGAWA Taeko Cultural Anthropology, Gender Studies; Italy, Mediterranean Europe	NARA Masashi Cultural Anthropology, Chinese Studies	SUGASE Akiko Anthropology, Middle Eastern Studies

The Department aims to create a new domain of anthropological area studies by deepening regional ethnographic research in various regions of the world and establishing new foundations for cross-field research.

Department of Modern Society and Civilization

FUKUOKA Shota Director

Professors		Associate Professors		
FUKUOKA Shota Ethnomusicology; Southeast Asia, Indonesia	IKEYA Kazunobu Environmental Anthropology, Cultural Geography; Southern Africa, Japan	FUJIMOTO Toko Cultural Anthropology, Central Asian Studies	SAITO Reiko Ainu and Northern Indigenous Peoples Studies, Material Culture; North Pacific Rim	UEBA Yoko Textile and Handcraft; South Asia, Middle East
HIRAI Kyonosuke Economic Anthropology, Anthropology of Work; Southeast Asia	SAITO Akira Ethnohistory; Latin America	ITO Atsunori Social Anthropology, Native American Studies, Indigenous Arts and Intellectual Property Issues	UDA Shuhei Environmental Folklore; East Asia	
		MATSUMOTO Yuichi Andean Archaeology, Latin America Studies		

The Department aims to create a set of new values for responding to that challenges humanity faces today, and to envisage the future of civilization through interdisciplinary approach of looking into the future by way of the events of the past.

Department of Globalization and Humanity

MIO Minoru Director

Professors		Associate Professors		Assistant Professors
MIO Minoru Religious Anthropology; South Asia, India	NOBUTA Toshihiro Social Anthropology, Southeast Asian Studies	AISHIMA Hatsuki Social Anthropology; Islam, Middle East	SUZUKI Hideaki History of the Indian Ocean World, Swahili Society	CHE Sohee Medical Anthropology, Northeast Asian Studies
NISHIO Tetsuo Linguistics, Arab Culture; Middle East, North Africa	SUZUKI Nanami Cultural Anthropology, Culture of Medicine, Life-design Studies, American and European Medieval Social History	NAKAGAWA Osamu Cultural Anthropology, Anthropology of Europe	YAGI Yuriko Cultural Anthropology, Latin American Studies	KURODA Kenji Middle Eastern Studies, Cultural Anthropology
NIWA Norio Social Anthropology; Oceania				

To create new values for responding to challenges that humanity faces today, the department and to envisage a global society through an interdisciplinary approach of taking a bird's eye view of the world by way of regional events.

Center for Cultural Resource Studies

NOBAYASHI Atsushi Director

Professors		Associate Professors	
IIDA Taku Ecological Anthropology, Fisher Studies; Madagascar, Japan	MORI Akiko Cultural Anthropology, Ethnography; Central Europe, Germany, Austria, Japan	HIROSE Koujirou Japanese Religious History, Folklore	SHIMAMURA Ippei Cultural Anthropology, Mongolian Studies
KISHIGAMI Nobuhiro Cultural Anthropology, Inuit Studies; North America	NOBAYASHI Atsushi Ethnoarchaeology, Material Culture, Austronesian Cultures; East Asia, Formosa	MISHIMA Teiko Anthropology, International Migration; Senegal, West Africa	TERAMURA Hirofumi Culture and Information Science, Archaeological Information
		ONO Rintaro Marine Archaeology, Southeast Asian Studies	

The Center aims to plan and promote research projects that improve the sharing of cultural resources in an interdisciplinary and international manner.

Center for Academic Research Development

HIRAI Kyonosuke Director

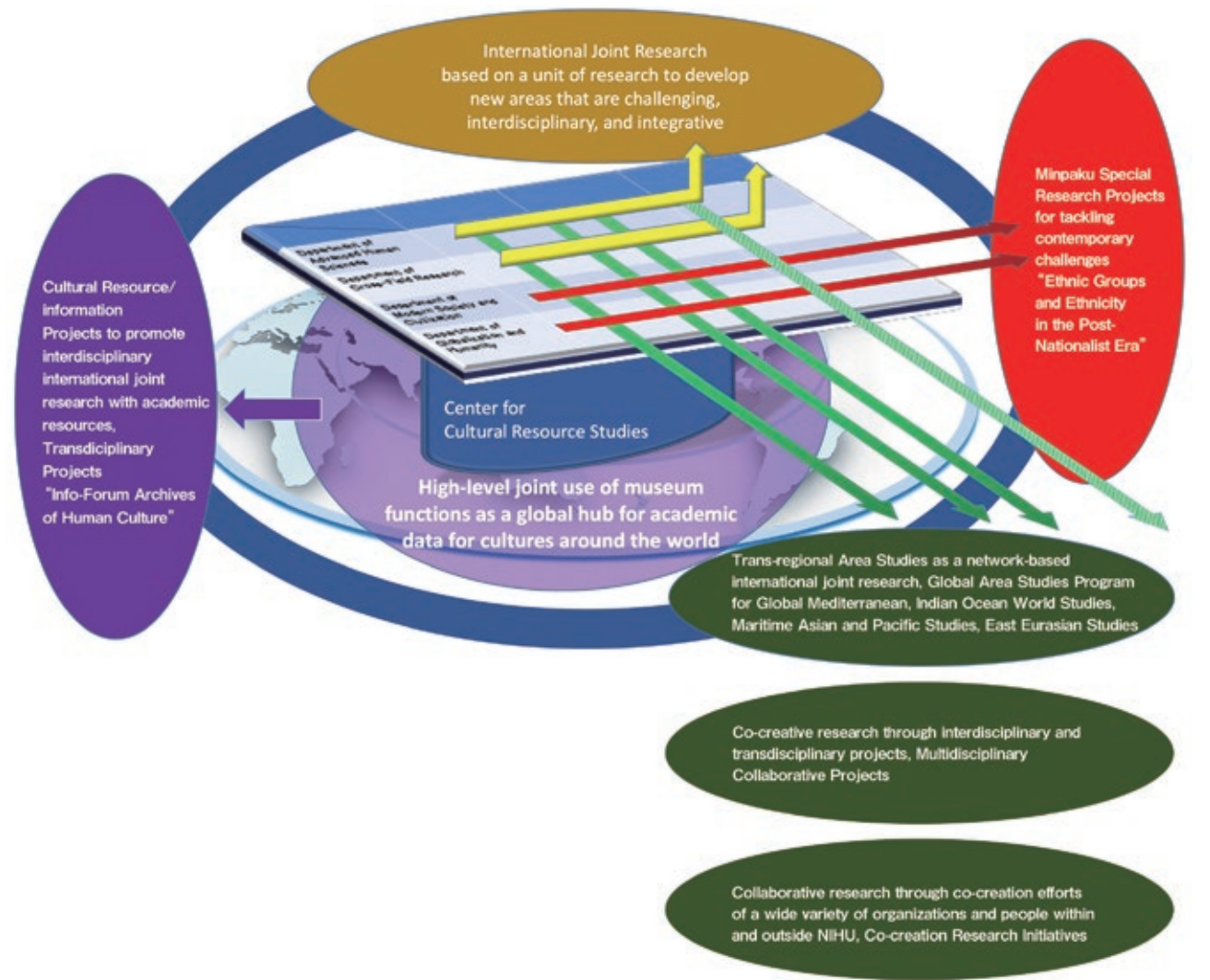
HAN Min Professor, Department of Cross-Field Research	NIWA Norio Professor, Department of Globalization and Humanity	SUZUKI Hideaki Associate Professor, Department of Globalization and Humanity
NARA Masashi Associate Professor, Department of Cross-Field Research	SAITO Akira Professor, Department of Modern Society and Civilization	UDA Shuhei Associate Professor, Department of Modern Society and Civilization

The Center aims to plan and oversee the infrastructure enhancement and international and national strategies for research organizations to be used jointly to explore new domains.

Umesao Archives

IIDA Taku Director

MARUKAWA Yuzo Associate Professor, Department of Advanced Human Sciences	SUEMORI Kaoru Associate Professor, Department of Advanced Human Sciences
--	--



Visiting Research Fellows

Department of Modern Society and Civilization

KONAGAYA Yuki
Inspector General, Japan Society
for the Promotion of Science
Anthropology on Nomadism in Mongolia,
Central and North Asia

Research Associates

Department of Advanced Human Sciences

UEMURA Yukio
Professor, Faculty of Music, Tokyo University of the Arts
Reconstruction and Revitalization of Japanese Folk Music
through Utilizing the Toyo Ongaku Gakkai Sound Archives
Preserved in the National Museum of Ethnology

Department of Cross-Field Research

AZUMA Kentaro
Associate Professor, Graduate School of Humanities,
Nagoya University
A Study on the Dynamism of Tourization and De-tourization
in the Age of Globalization

KAWAI Hironao
Associate Professor, Faculty of Humanities and Social Sciences,
Tokyo Metropolitan University
Reevaluation of Anthropological Theories in the Realm
of Chinese Studies: 12 Topics

Department of Modern Society and Civilization

KAMEI Tetsuya
Professor, School of Contemporary Sociology,
Chukyo University
An Anthropological Study on Cultural Resources
and Ethnicity in Africa

KATAOKA Tatsuki
Professor, Graduate School of Asian and African Area Studies,
Kyoto University
Toward a New Perspective for Japan Studies Reflecting
Overseas Field Experiences

MIZUKOSHI Shin
Professor, Interfaculty Initiative in Information Studies,
The University of Tokyo
Theoretical and Methodological Examination of Media
Anthropology

NAKAO Katsumi
Professor, College of Arts and Sciences,
J.F. Oberlin University
Relation of Nation-States with Knowledge of Anthropology
and Folklore: Nationalism and Intelligence
in the Former Half of Twentieth Century

NAKATANI Ayami
Professor, Research Institute for the Dynamics
of Civilizations, Okayama University
Production and Consumption of Traditional Textiles:
The Transformation of Local Perceptions through the Politics
of Cultural Heritage and Tourism

SAGAWA Toru
Associate Professor, Faculty of Letters, Keio University
The Dynamics of Frontier Spaces in Contemporary
Sub-Saharan Africa, South-East Asia and Latin America

Department of Globalization and Humanity

MORIMI Tomihiko
Novelist
The Challenge of Fantasy in Modern Global Society:
Relocating Idiosyncratic Imagination as a Factor
of Human Evolution

NAITO Naoki
Associate Professor, Graduate School of Technology,
Industrial and Social Sciences, Tokushima University
Ethnography of Capital and Power:
Towards an Ecology of Publicness

SHIRAI Chiaki
Professor, Faculty of Humanities and Social Sciences,
Shizuoka University
Interdisciplinary Study on Reproductive Technology
and Childrearing in Modern Asia

TANUMA Sachiko
Associate Professor, Faculty of Humanities
and Social Sciences, Tokyo Metropolitan University
Morality within Neoliberalism

YAMA Yoshiyuki
Professor, School of Human Welfare Studies,
Kwansei Gakuin University
Narrative Politics of “Tolerance / Intolerance”
in the Global Era

Center for Cultural Resource Studies

KAZAMA Kazuhiro
Professor, Graduate School of Human
and Environmental Studies, Kyoto University
The Anthropological Study of Historical Memory and Emotions
on the Intercourse with Other Peoples in Oceania and Island
Southeast Asia

ŌNISHI Hideyuki
Professor, Faculty of Contemporary Social Studies,
Doshisha Women's College of Liberal Arts
Rethinking Ethnographic Records of Seiichi Izumi with
Emphasis on Saru River Research

OSAKA Taku
Researcher, Hokkaido Museum Ainu Culture Research Center
Study of Ainu Material Culture in the First Half
of 20th Century

YAMAGUCHI Mikako
Associate Professor, Graduate School of Humanities
and Human Sciences, Hokkaido University
The Anthropology of the “Depicted Animals”:
Focusing on the Becoming in Animals and Humans

Center for Cultural Resource Studies

Object

The Center for Cultural Resource Studies was established on April 1, 2017, with the objective of improving access to cultural resources at the Museum for interdisciplinary and international research.

Development of Cultural Resource Study

The National Museum of Ethnology (Minpaku) owns about 345,000 artifacts, 70,000 items of video and sound resources, 670,000 books, and other research resources such as photographic archives, research database, and field note archives, survey papers, and other ethnological research papers left by cultural anthropologists and ethnologists. These are important cultural resources that relate to the humanity’s cultures and activities, and precious academic resources to reflect on the past, present and future of humanity. The Museum is undertaking projects to improve the shared availability of these cultural resources for interdisciplinary and international research, by publishing the research results and information on these cultural resources through a database called Info-Forum Museum, and through other media including Special Exhibitions, Thematic Exhibitions, and Traveling Exhibitions. The Center supports these research projects, and plans and promotes new projects.

Research Fellows

KIM Yujin
Support for the shared use of academic information, particularly
for the Info-Forum Museum

MATSUMOTO Ayako
Investigations and research elucidating the theory and practice
of distribution and dissemination of research information using
cultural resources

Project Research Fellows

HASHIMOTO Sachi
Assistant work for the cultural resource planning project
“Research on the Preservation and Management of Tangible
Cultural Resources”

INOUE Mai
Preparations for hosting an international symposium
in December

ISHIYAMA Shun
Research work for building a digital library of academic knowledge

KAWAMURA Yukako
Assistant work for the cultural resource planning project “Research
on the Preservation and Management of Tangible Cultural
Resources”

KOBAYASHI Naoaki
Research work for building a digital library of academic knowledge

Research Fellows,
NIHU Center for Innovative
Research

Global Area Studies Program Steering Unit

TAKEMURA Yoshiaki
Project Assistant Professor

Global Mediterranean

OKAMOTO Naoko
Project Assistant Professor

Indian Ocean World Studies

MATSUI Azusa
Project Assistant Professor

Maritime Asian and Pacific Studies

MOMMA Ippei
Project Assistant Professor

East Eurasian Studies

AKAO Mitsuharu
Project Assistant Professor

Establishing Science for Universal
Communication (S_COM)

SAGARA Keiko
Project Assistant Professor

Liberal Arts Communicator

KAMINO Chie
Project Assistant Professor

Projects of FY2021

In FY2021, the Center supported the promotion of 3 database establishment projects and 6 database improvement projects based on the project to build the “Info-Forum Museum for Cultural Resources of the World”, and also planned an international symposium “Interdisciplinary Research and Info-Forum Museum”. Concurrently, the Center assisted in the preparation and organization of the following exhibitions: Special Exhibitions (“Local Cultures Assisting Revitalization: 10 Years since the Great East Japan Earthquake” and ““UNIVERSAL MUSEUM”: Exploring the New Field of Tactile Sensation”), Thematic Exhibition (“The Vibrance of Indian Fabrics”), Traveling Exhibitions (“Toys Expo—Children in Modern Japan: Shimane Museum of Ancient Izumo” and “Local Cultures Assisting Revitalization: 10 Years since the Great East Japan Earthquake: National Institute of Japanese Literature” and “Beads from Aynu Mosir to the World: National Ainu Museum”). Additionally, the center conducted research to improve the joint use of academic resources.

Projects of FY2022

In FY 2022, we will mainly pursue three projects.

Research Promotion and Support for Info-Forum Archives of Human Culture Project

Since FY2022, this Museum has managed an Institution-based Transdisciplinary Project of the National Institutes for the Humanities, entitled “Sustainable development humanities research based on the Info-Forum archives of human culture.”

In FY2022, we expect to launch Basic Research Project, and Promotional Research Project.
The Center studies standardization and multilingual translations of the artifacts and resources. It also supports the promotion of these projects through database building, editing and publication.

Research Promotion and Support for Special Exhibitions, Thematic Exhibitions,
Collection Exhibition and Traveling Exhibitions Project

The Museum implements Special Exhibitions, Thematic Exhibitions, Collection Exhibition and Traveling Exhibitions, in order to publish its cultural resources and related research outcomes. In FY2022, the Museum will show case: Special Exhibition for the 50th Anniversary of the Establishment of Diplomatic Relations between Japan and Mongolia entitled “100 Years of Mongolia: Encounters through Photography,” Special Exhibitions “*Homō loquēns* ‘talking human’: Wonders of Language and Languages,” and “Arte Popular: The Creative and Critical Power of Latin Americans,” Thematic Exhibitions “Slash-and-Burn Cultivation Viewed by SASAKI Komei: From Itsuki Mura to the World” and “Maritime People and Art of Their World: Material Culture in Southeast Asia and Oceania,” Collection Exhibition “Cormorant Fishing in Contemporary China: Techniques of Fishers,” Traveling Exhibitions “REGNUM IMAGINARIUM: Realm of the Marvelous and Uncanny: Kochi Prefectural Museum of History,” “Beads in the World: Ishikawa Nanao Art Museum,” “Beads in the World: The Shoto Museum of Art” and “REGNUM IMAGINARIUM: Realm of the Marvelous and Uncanny: Fukuoka City Museum” among others. The Center will promote the research that will enable these exhibitions and assist in the running of the exhibitions.

Research for Improving the Shared Availability of Cultural Resources

In FY2022, we will research the ways to promote the interdisciplinary and international joint use of the cultural resources owned by this Museum, and effective ways to contribute to university education, academic research, dissemination of knowledge to the general public, and creation of cultures by their bearers.

Center for Academic Research Development

Object

The Center for Academic Research Development was establish in April 2017, and has assumed the research strategy functions that the Center for Research Development and the Center for International Academic Exchange formerly provided for: national and international shared use and joint research; enhancing infrastructure; and plan and oversee the national and international strategies for the shared use and joint research organizations pioneering new domains. The Center will reinforce the systematic research capabilities of each of our research departments and centers. More specifically, the Center engages in the activities required to promote internationally coordinated or joint research more strategically and systematically, including: improvement in the implementing organization of a research project based on shared use of resources; development, preparation and signing of (national and international) academic exchange agreements and the signing policies thereof; survey of overseas research trends; and information gathering and provision on external finances.

Institutional Research (IR)

Object

The Office of Institutional Research (IR) was established in April 2016 to support the Museum’s planning and decision-making by collecting and analyzing data on the Museum’s research and education and converting the compiled data and analysis results into reference materials.

To fulfill this purpose, the Office mainly does the following: (1) collects and publishes data on research and education; (2) analyzes the data and publishes the results; and (3) provides the data and analysis results for the Museum’s reforms and improvements.

As a member of the National Institutes for the Humanities, the Museum establishes midterm plans and fiscal year plans based on six-year midterm goals set by the Ministry of Education, Culture, Sports, Science and Technology. The Museum also receives evaluations of its research and education from the National University Corporation Evaluation Committee. In addition, the Museum conducts self-inspections and self-evaluations and publishes the findings in a report. The Office of IR collects and analyzes a wide range of data on research and education for these inspections and evaluations.

Minpaku Special Research Projects

Minpaku Special Research Project is a research program organized independently by National Museum of Ethnology in collaboration with universities and other research institutes in Japan and overseas. Based on domestic and international academic research trends and social demands, Minpaku Special Research Project aims to create new academic fields by enhancing interdisciplinary research. During the six years of the third mid-term goals period, starting in FY2016, we adopted the umbrella theme of “Contemporary Civilization and the Future of Humanity: Environment, Culture, and Humans.” For this, we undertook solution-focused approaches to tackle urgent challenges facing our contemporary civilization.

During the six years of the fourth mid-term goals period beginning in FY2022, five research projects will be conducted under the umbrella theme of “Ethnic Groups and Ethnicity in the Post-Nationalist Era.” The research adopts a holistic perspective to the processes of the reconfiguration of ethnic groups and ethnicity in the post-nationalist era. This perspective will include culture, politics, religion, society, environment, and history. In this way, we aim to present new approaches that will contribute to the realization of a diverse and inclusive society where all people respect each other and live together regardless of cultural differences.

List of Minpaku Special Research Projects FY2016 - FY2021

Umbrella Theme “Contemporary Civilization and the Future of Humanity: Environment, Culture and Humans”

Theme Category: Environment

Project Leader	Project Title	Category	Project Period
IKEYA Kazunobu KISHIGAMI Nobuhiro	Historical Ecology of Biocultural Diversity: Use and Conservation of Endangered Animals, Plants, and Habitats	① Environmental issues and biodiversity	July 2016 - March 2019
NOBAYASHI Atsushi	Human and Natural History on System of Food Production	② Food issues and eco-systems	April 2017 - March 2020

Theme Category: Culture

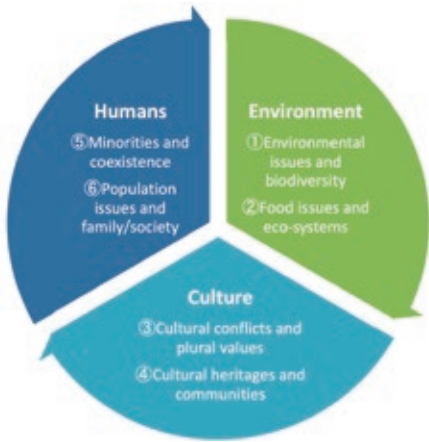
Project Leader	Project Title	Category	Project Period
NISHIO Tetsuo	Global Area Studies: Towards a New Epistemology for Mapping the Globalising World	③ Cultural conflicts and plural values	April 2020 - March 2023
IIDA Taku	Humanity and Communities in Cultural Heritage in the Age of Digital Technology	④ Cultural heritages and communities	April 2019 - March 2022

Theme Category: Humans

Project Leader	Project Title	Category	Project Period
TERADA Yoshitaka FUKUOKA Shota	Performing Arts and Conviviality	⑤ Minorities and coexistence	April 2018 - March 2023
MORI Akiko	Family Potential in Uncertain Times: Mobility, Technology and Body	⑥ Population issues and family / society	April 2021 - March 2024

Special Theme Category

Project Leader	Project Title	Category	Project Period
SHIMAMURA Ippei	Modern Civilization and Infectious Diseases	Modern Civilization and Infectious Diseases	December 2020 – March 2024



Projects in FY2021

Project Leader	Project Title
FUKUOKA Shota	Performing Arts and Conviviality
IIDA Taku	Humanity and Communities in Cultural Heritage in the Age of Digital Technology
NISHIO Tetsuo	Global Area Studies: Towards a New Epistemology for Mapping the Globalizing World
SHIMAMURA Ippei	Modern Civilization and Infectious Diseases
MORI Akiko	Family Potential in Uncertain Times: Mobility, Technology, and Body

Public Lecture
“Family Figures in Flux: Aging Society with Low Fertility from an Anthropological Perspective”

Date November 12, 2021
Project Leader MORI Akiko
The total number of participants 335



Online Meeting of Minpaku Special Research Project
“Performing Arts and Conviviality”

Date June 7, 2021 – March 21, 2022 (Four times) (online)
Coordinator FUKUOKA Shota
The total number of participants 97

Online Seminar co-sponsored by Minpaku Special Research Project
“Global Area Studies: Toward a New Epistemology for Mapping the Globalizing World”

Date November 23, 2021 – March 29, 2022 (Seven times) (online)
Coordinator NISHIO Tetsuo
The total number of participants 180

* Due to the spread of COVID-19, some of scheduled international symposiums were conducted as online meeting.

List of Minpaku Special Research Projects FY2022 - FY2027

Umbrella Theme “Ethnic Groups and Ethnicity in the Post-Nationalist Era”

Project Leader	Project Title	Project Period
SUZUKI Motoi	Challenges for Museums in the Era of Post-Nationalism—Methods of Exhibiting Indigenous Cultures	April 2022 - March 2025
NOBAYASHI Atsushi	Understanding Conflicts Involving the Wills and Intentions of Individuals, Affiliate Groups, and the Nation-State, and the Realization of a Nation-State Comprising Diverse Ethnic and Cultural Group	April 2023 - March 2026
MATSUO Mizuho	The Politics of Roots and the Arts/Techniques of Coexistence—Ethnicity and Histories in the Post-Nation-State Era	April 2024 - March 2027
NARA Masashi	Ethnicities and Religions—The Entanglements of Exclusivity and Inclusivity	April 2025 - March 2028
NIWA Norio	Political Violence, Conflict, and Ethnicity	April 2026 - March 2029

Public Lecture
“Reconsidering ‘Minzoku’ in Japan and Taiwan”

Date November 11, 2022
The chairperson of Committee for Minpaku Special Research Projects HIRAI Kyonosuke

Sustainable Development Humanities Research Based on the Info-Forum Archives of Human Culture (Instituted Project of the National Institutes for the Humanities Transdisciplinary Projects) FY2022

An institution-based research initiative, designated as “Sustainable development humanities research based on the Info-Forum archives of human culture,” is aimed at compiling multilingual “archives of human culture.” This broadly disseminates more than a million of the Museum’s academic resources for online public access, by promoting international collaborative research between researcher communities and indigenous communities, known as the bearers of culture. The archives presumably form a core for educational and research activities, that enable the inheritance of academic resources in anthropology, ethnology, and their related fields, as common international properties. In its first year, 2022, five projects will be implemented: two basic research projects and three promotional research projects.

Project under Promotion:

1. Basic Research

Basic research specifically examines compilation of the archives, that focuses on the Museum’s cultural resources of artifacts, photographs, videos, and bibliographical materials, as well as related academic materials, with the consistent promotion of collaborative research using archives.

2. Promotional Research

Promotional research advertises the dissemination of results through international collaborative research, international symposia, and exhibitions, based on a novel database created using existing databases and platforms, and on the compilation of new archives.

Projects of Sustainable Development Humanities Research Based on the Info-Forum Archives of Human Culture

Project Leader	Project Title*	Category	Period
HIRANO Chikako	A Study of the Material Culture of Aboriginal Australians, with a Focus on the Minpaku Collection	Basic research	April 2022 - March 2026
NIWA Norio	Building of a comprehensive archive on Pacific collection by Japanese	Basic research	April 2022 - March 2026
SASAHARA Ryoji	Research based on Info-Forum Museum of Folk Performing Arts in Tokunoshima and Amamioshima and Production and Release of Multimedia Contents and Exhibitions	Promotional research	April 2022 - March 2024
HIRAI Kyonosuke	Construction of Archives of the First Synthetic Research of the Culture of Rice-cultivating Peoples in Southeast Asian Countries: Focusing on Photographs of Thailand	Promotional research	April 2022 - March 2024
NOBAYASHI Atsushi	Building an Integrated Digital Archive of Taiwan Studies	Promotional research	April 2022 - March 2024

*Implemented in FY2022



Info-Forum Museum for Cultural Resources of the World (Instituted Project of the National Institutes for the Humanities Transdisciplinary Projects) FY2014 - FY2021

During FY2021, the eighth year of this program, three new projects for database establishment, and six new projects for database improvement were added, bringing the total number of projects to nine. In our international exchange program, established to promote the internationalization of research, we published “Collections Reviews on 17 Silverworks Labeled “Hopi” in the History Colorado Center, a Silverwork in the Portland Art Museum, and a Silverwork Labeled “Hopi” in National Museums Scotland: Reconnecting Source Communities with Museum Collections 6, 7, 8” and “Collections Review on 97 Items Labeled “Hopi” in the Little World Museum of Man: Reconnecting Source Communities with Museum Collections 9” as a resultant publication. This is one of the instituted project of the NIHU Transdisciplinary Projects.

Project under Promotion:

1. Project for Database Establishment

The aim of the project is to share information related to cultural resources under the supervision of a project leader and in cooperation with partner organizations at home and abroad, and to thereby to further international joint research to produce contents for the database. Utilization of images and audio data are being promoted, except for common items, for the construction of the database.

2. Project for Database Improvement

The aim of the project is to organize Minpaku’s existing data related to cultural resources and to add new data, thereby improving the database through refinement.

Projects of Info-Forum Museum for Cultural Resources of the World

Project Leader	Project Title*	Category	Period
IIDA Taku	Building a Multilingual and Interactive Database for the Africa Collection	project for database establishment	April 2017 - March 2022 Extend the period due to the COVID-19 pandemic
TERAMURA Hirofumi	Material Culture in Central and North Asia: Ethno-Cultural Objects at the National Museum of Ethnology	project for database establishment	April 2018 - March 2022
ONO Rintaro	Maritime Adaptation and Material Culture in Maritime Asia-Based on the Museum Materials from Southeast Asia	project for database establishment	April 2019 - March 2022
YAGI Yuriko	Building an Info-Forum Database for Cultural Collections of Central and South America	project for database improvement	April 2018 - March 2022 Extend the period due to the COVID-19 pandemic
NIWA Norio	Building an Info-Forum Database for the Asaeda Toshio Collection Focusing on his Oceania Ethnography	project for database improvement	April 2018 - March 2022 Extend the period due to the COVID-19 pandemic
MINAMI Makito	Building an Info-Forum Database for Audiovisual Records of the Gandharba Community, Nepal	project for database improvement	April 2018 - March 2022 Extend the period due to the COVID-19 pandemic
HIDAKA Shingo	Cultural Heritage Sites Possessing Memories of Tsunamis: Database of Temples/Shrines and Stone Monuments: Enhancing the Database for the Info-Forum Museum	project for database improvement	April 2020 - March 2022
MISHIMA Teiko	Information Reinforcement based on Video Recordings of Various Ethnic Cultures in Senegal	project for database improvement	April 2020 - March 2022
IKEYA Kazunobu	Internationalization and the Development of Interdisciplinary Studies on Database of “Yakihata (Swidden Fields) - The SASAKI Komei Collection”	project for database improvement	April 2020 - March 2022

*Implemented in FY2021



People of the source community holding discussions and a workshop using a database in Taiwan



A program introducing the traditional wedding ceremony during a cultural week (Bakel, Senegal, 2017)



Printed publication of outcomes by the international transmission program

Inter-University Research Projects

These projects are conducted jointly by scholars of the Museum and outside organizations.

In FY2021, projects were jointly undertaken by the Museum scholars and 120 scholars from national universities, 24 scholars from prefectural and municipal universities, 151 scholars from private universities, and 59 experts from other organizations.

FY2022 Research Theme

○ Projects undertaken outside Minpaku

General Research

Coordinator	Research Theme	Research Period
Project 1: New field development		
○ NAKAO Katsumi	Relation of Nation-States with Knowledge of Anthropology and Folklore: Nationalism and Intelligence in the Former Half of Twentieth Century	2017.10 – 2023.3
○ TANUMA Sachiko	Morality within Neoliberalism	2017.10 – 2023.3
○ KAZAMA Kazuhiro	The Anthropological Study of Historical Memory and Emotions on the Intercourse with Other Peoples in Oceania and Island Southeast Asia	2018.10 – 2023.3
○ NAKATANI Ayami	Production and Consumption of Traditional Textiles: The Transformation of Local Perceptions through the Politics of Cultural Heritage and Tourism	2018.10 – 2023.3
○ SAGAWA Toru	The Dynamics of Frontier Spaces in Contemporary Sub-Saharan Africa, South-East Asia and Latin America	2018.10 – 2023.3
○ YAMA Yoshiyuki	Narrative Politics of “Tolerance/Intolerance” in the Global Era	2018.10 – 2023.3
○ NAITO Naoki	Ethnography of Capital and Power: Towards an Ecology of Publicness	2018.10 – 2023.3
○ AZUMA Kentaro	A Study on the Dynamism of Tourization and De-tourization in the Age of Globalization	2019.10 – 2023.3
NOBAYASHI Atsushi	Dietary and Staple Food in the Sustainable Society	2019.10 – 2023.3
○ KAWAI Hironao	Reevaluation of Anthropological Theories in the Realm of Chinese Studies: 12 Topics	2019.10 – 2023.3
SUZUKI Hideaki	Re-construction of the Notions of Movement in Human History: With Focus on Friction between “Free” and “Unfree”	2019.10 – 2023.3
ONO Rintaro	Anthropological Study of Human Burial Practice and Culture in Asia and Pacific Islands	2019.10 – 2023.3
○ KATAOKA Tatsuki	Toward a New Perspective for Japan Studies Reflecting Overseas Field Experiences	2020.10 – 2023.3
○ YAMAGUCHI Mikako	The Anthropology of the “Depicted Animals” : Focusing on the Becoming in Animals and Humans	2020.10 – 2023.3
○ SHINMOTO Mariko	Comparative Study on the Influence of International Development on Menstruation: From the Perspective of Gender and Medicalization	2020.10 – 2023.3
KISHIGAMI Nobuhiro	Interdisciplinary Comparison of Historical Change, Current of State, and Future of Indigenous Societies along the North Pacific Rim: From a Perspective of Human History	2020.10 – 2023.3
MORI Akiko	Exploring an Alternative Notion of Community in Uncertain Times: Contingent Arrangement of Material, Institutional, and Body Settings	2020.10 – 2023.3
UDAGAWA Taeko	A Study on the Transformation of Food/Foodways Related to Wars and Imperialism: Rethinking the Relationship between Food/Foodways and the Nations	2020.10 – 2023.3
UDA Shuhei	A T-shaped Interdisciplinary Approach to Cormorant Fishing Culture in Japan	2020.10 – 2023.3
○ SHIRAI Chiaki	Interdisciplinary Study on Reproductive Technology and Childrearing in Modern Asia	2021.10 – 2024.3
○ DOI Kiyomi	Reorientation of Uncertainty in Tourism	2021.10 – 2024.3
TAKEZAWA Shoichiro	The Anthropology of Vulnerability	2021.10 – 2024.3
○ YAMANOUCHI Yuriko	A Comparative Ethnography of Belonging and Difference in Mixed Heritage Peoples: Cases from Indigenous Peoples in Oceania	2022.10 – 2025.3
NAKAGAWA Osamu	Connecting Diverse Logics in Global Capitalism: An Interdisciplinary Approach	2022.10 – 2025.3
IKEYA Kazunobu	Migrations and Livelihoods of Asian Hunter-Gatherers: Diversity of Environmental Adaptations in Human History	2022.10 – 2025.3

Project 2: Sharing of academic resources		
SONODA Naoko	Conservation Science Research on the Establishment of Sustainable Collection Management and Museum Environment	2017.10 – 2023.3
○ ŌNISHI Hideyuki	Rethinking Ethnographic Records of Seiichi Izumi with Emphasis on Saru River Research	2019.10 – 2023.3
○ UEMURA Yukio	Reconstruction and Revitalization of Japanese Folk Music through Utilizing the Toyo Ongaku Gakkai Sound Archives Preserved in the National Museum of Ethnology	2021.10 – 2024.3
NIWA Norio	A Study on the Formation and Use of Pacific Ethnographic Collections by the Japanese: Focusing on the Toshio Asaeda Collection of the National Museum of Ethnology	2021.10 – 2024.3
○ OCHIAI Yukino	Research on Historical Changes in Forest Resources and Their Uses Based on the Analysis of National Museum of Ethnology Collection: Focusing on the Wood Materials of Tubs and Barrels	2022.10 – 2025.3

Young Researchers

Coordinator	Research Theme	Research Period
Project 1: New field development		
○ OGATA Shirabe	Interactions between Sensuosity and Institutions: Examining Evocation and Valuation in Art Practices	2019.10 – 2023.3
○ FURUKAWA Fukachi	Anthropological Studies of Mobilities and Materialities	2019.10 – 2023.3
○ KONDO Shiaki	Relationships between Indigenous Peoples and Information Societies	2020.10 – 2023.3
○ MIYASAKA Shinji	A Project to Touch the Shapes of Tradition by Combining 3D Printing with Traditional Materials and Techniques	2021.10 – 2024.3

Public Presentation of Joint Research Results

Since FY2004, some of the Joint Research Project meetings have been made open to the general public. (No project opened to the public in FY2021)

Visiting Researchers FY2021

As an Inter-University Research Institute, the Museum accepts researchers, young doctoral graduates, and doctoral students from domestic and overseas academic and research institutions who wish to conduct research activities at the Museum as Visiting Researchers for a certain period of time. Instructors at the Museum are assigned to host such researchers and graduates. Visiting Researchers who meet certain conditions are permitted to apply for Grants-in-Aid for Scientific Research as project coordinators at the Museum. In FY2021, we accepted a total of 92 researchers, including 27 who were non-Japanese from 11 countries and regions.

Visiting Graduate Student Program FY2021

The Museum, as an Inter-University Research Institute, accepts students who are enrolled in doctoral courses at Japanese national, public, and private universities. Upon request from their universities, these students may be accepted as Visiting Graduate Student in order to provide them with research guidance on specific themes for a fixed period of time. Visiting Graduate Students can pursue their research under the guidance of Museum scholars, use the facilities, and attend classes at the School of Cultural and Social Studies of SOKENDAI (The Graduate University for Advanced Studies) (Regional Studies and Comparative Studies) established at the Museum. In FY2021, we accepted one student from national university.

JSPS Grants-in-Aid for Scientific Research

Grants-in-Aid for Scientific Research provided by the Japan Society for the Promotion of Science are intended to foster the progress of unique and pioneering research projects in all fields ranging from the human and social sciences to the natural sciences, in order to promote academic activities in our country. The aid is awarded to research projects which are especially important in terms of current academic trends, organized on the initiative of individual researchers or research groups in academic institutions.

FY2022 Projects Funded

Category	Head	Research Subject	(Thousands of yen)
Grant-in-Aid for Transformative Research Areas(A)(Public Offered Research)			
Continued	KURODA Kenji	Research in Sociology of Knowledge on Intellectual Dynamism about Islam and the Understanding of Muslims in Modern Japan	1,950
			Total 1,950
Fund for the Promotion of Joint International Research (Fostering Joint International Research(B))			
Continued	KIKUSAWA Ritsuko	Integrating Language Change in Time and Space: Applying Geographical Information System (GIS) and Statistic Modelling to Historical Linguistics	2,470
Continued	YOSHIDA Kenji	Innovation in the Study of the Arts in Anthropology: Creating a Platform for International Research in the Anthropology of Images	4,940
Continued	NAGANO Yasuhiko	The “Objects” and Their Sacred Power in the Religions of Tibet -- an International Collaborative Survey	5,980
			Total 13,390
*Fund for the Promotion of Joint International Research (Fostering Joint International Research(A))			
New	ICHINO Shinichiro	Formation Mechanism of Southern Madagascar's Tamarind Forest: A Comparative Study of Local Ecological Histories	13,130
			Total 13,130
Grant-in-Aid for Scientific Research (A)			
Continued	YAMANAKA Yuriko	The Natural and the Supernatural in Comparative Perspective	3,900
Continued	KISHIGAMI Nobuhiro	A Comparative Study of Emergence, Current Status and Future of Indigenous Cultures in Alaska and Northwest Coast Regions of North America	7,930
Continued	SEKI Yuji	Reinventing the Study of Andean Civilization through Analysis of Social Memory	10,920
Continued	ONO Rintaro	Migration and Island Adaptation of Homo Sapiens in Maritime Asia	10,270
New	NOBAYASHI Atsushi	Exploring an Indigenous Society in Early Colonial Taiwan by Joining Ethnographic Archives and Field Research	8,970
			Total 41,990
Grant-in-Aid for Scientific Research (B)			
Continued	UEBA Yoko	An Anthropological Study on Basketry from the Perspective of Plant Ecology and Craft Skills	3,510
Continued	TERAMURA Hirofumi	Archaeological Research on the Formation of Silk Road Cities and East-west Exchange of People and Cultures	2,860
Continued	NIWA Norio	Resilience of Post-conflict Societies: Analysis of Social Capital and Migrant Networks of Minorities in Oceania	2,730
Continued	MATSUMOTO Yuichi	Reconsidering the Chavin Problem: Interdisciplinary Studies on the Emergence of Early Complex Societies in the Andes	3,250
Continued	UDA Shuhei	Elucidation of Cormorant Fishing as Cultural System and Co-creation of Optimal Inheritance Route in the Era of Animal Welfare.	1,300
Continued	IKEYA Kazunobu	Re-evaluating African History through the Study of Ornament Culture	3,380
Continued	SAITO Akira	A Digital Humanities Approach to the Tasas: Spanish Colonial Rule and Native Andean Society	2,210
Continued	SONODA Naoko	A New Technique for Extending the Life Span of Degrading Acidic Papers	5,200
Continued	YOSHIDA Kenji	Anthropological Study of Immurgence of Culture in the Midst of Social Crisis in Africa	3,770
Continued	TAKEZAWA Shoichiro	The Anthropology of Vulnerability: How Can We Talk about People Vulnerable to Sufferings	4,030
Continued	SUZUKI Motoi	Anthropological Study of Latin American “Arte Popular”	3,510
New	HIDAKA Shingo	Developing a Universal Exhibition Guidance System in the Post-corona Society	6,240
New	DEGUCHI Masayuki	The Interdisciplinary Researches between Museology and Accounting on the Paradox of Preservation and Measurement of Cultural Heritage	3,120
			Total 45,110
Grant-in-Aid for Scientific Research (C)			
Continued	NAKAMICHI Shizuka	The Thousand and One Nights from Manuscript to Print: Textual and Historical Studies	520
Continued	OKAMOTO Naoko	Research about the Writing Process of J.-C. Mardrus by Analysis of One of His Unpublished Manuscripts	780
Continued	SAGARA Keiko	Historical Semantic Change in Japanese Sign Language, Taiwan Sign Language and Korean Sign Language	260
Continued	MIO Minoru	Anthropological Study on Religious Practice and Formation of Locality in a Western Indian Town	650
Continued	ICHINO Shinichiro	Introduction Pathways and Range Expansion Process of Tamarind in Madagascar: An Approach by using DNA Polymorphism Analysis	520
Continued	SUZUKI Hideaki	Historical Ethnography on Slavery in the Early 20th Century Persian Gulf	910
Continued	OTA Shimpei	Ethnographic and Statistic Approaches to Work Ethic and Motivation of Museum Employees	1,040
Continued	MORI Akiko	An Ethnographic Study of Neighborhood Seen from the Practice of Care in Berlin	910
Continued	GAO Qian	The Generation Process of Ethnic Art: Cultural Resource and Tourism of Tompa Culture in Lijiang, Yunnan Province, China	1,040
Continued	OKADA Emi	Traditional Polyphony and Singing Culture in Northeast India	1,040
Continued	SASAHARA Ryoji	Research on the Formation of Migrant Societies and the Tradition of Festivals and Performing Arts on the Islands of Japan since the Meiji era	1,040
Continued	KURODA Kenji	Global Scale of Industrial Production and Economic Integration between Modern Japan and the Middle East	1,040
New	NISHIO Tetsuo	Studies on the Intellectual Milieu of Antoine Galland and His Creative Contribution to the Arabian Nights	1,040
			Total 10,790

Category	Head	Research Subject	(Thousands of yen)
Grant-in-Aid for Young Scientists			
Continued	NARA Masashi	An Anthropological Study of Religions and Mobilities: Transnational Muslim Networks in Contemporary China	910
Continued	YAGI Yuriko	A Study on Devotion and Religiosity of Andean People: Focus on Votive Offering and Church Documents	1,170
Continued	KUDO Yumi	Anthropological Study on Ethno-medical Practices among Mapuche Organizations in Chile	910
Continued	ITO Satoru	Poetic Orality and Everyday Aesthetics: Comparative Study of Oral and Literal Culture in Tai Cultural Area	910
Continued	HISAOKA Kae	Collective Identity and Gender Perspectives in Songs and Dances of the Adyghe People: Through the Comparison with Georgia	1,532
Continued	KIM Yujin	Cultural Politics of Popular Music and the Military in Indonesia	1,300
New	HIRANO Chikako	Anthropological Study on the Occurrence and Avoidance of Drinking Trouble in an Australian Nomadic Society	1,170
			Total 7,902
Grant-in-Aid for Challenging Research (Pioneering)			
Continued	ONO Rintaro	Austronesian Migration into Southeast Asia: Interdisciplinary Study of Their Pottery and Burial Tradition	9,230
Continued	ITO Atsunori	Museum Anthropological Approach to Develop a Source Community Friendly Public Transmission Model on Digital Image of the “Copyrighted” Ethnographic Collection	6,240
			Total 15,470
Grant-in-Aid for Challenging Research (Exploratory)			
Continued	KIKUSAWA Ritsuko	Language Change and Social Norms Reanalyzed through Human Biology	4,160
			Total 4,160
Grant-in-Aid for Research Activity start-up			
Continued	MIYAMOTO Kana	An Anthropological Study of the Revival of Traditional Authorities among Herero-Speaking People in Namibia	1,560
New	MATSUI Azusa	Anthropological Study on Ethics in Not Being Too Responsible: A Case of Neighborhood Relationships in Mozambique Island	1,430
New	SATO Minako	A Study on “Storytelling” as a Method of Adult Literacy Education in Bhutan, a Multilingual Society	1,430
			Total 4,420
Grant-in-Aid for Publication of Scientific Research Results			
Continued	KUBO Masatoshi	Digital Archives of Umesao’s Documents	3,800
New	TAKAHASHI Haruko	Clothing Culture Digital Archives	5,400
New	HIRANO Chikako	Ethnography of the Hunting Liquor: Aboriginal Australians in a Post-Colonial Situation	1,400
New	KAMIMURA Chiharu	Around the Injera: Foodways and Everyday Life in an Ethiopian Orthodox Christian Village	1,200
			Total 11,800
Grant-in-Aid for JSPS Fellows			
Continued	KUDO Sakura	Ritual and its Changes among the Low Caste Newar Women: Perspective of Anthropology on Religion	1,300
New	NAKAO Yukie	Global Care Network for the Disabled: A Case Study of South Asian Organizations in Tanzania	1,820
New	FUKAMI Kikue	An Ethnographical Analysis of The Relationship between Parents in American Polyfamilies	1,040
New	ONO Rintaro BOULANGER CLARA	Development of New Fish Bone Analysis- Prehistoric Fishing in Ryukyu and Island Southeast Asia	900
			Total 5,060
*Fund for the Promotion of Joint International Research (Fostering Joint International Research(A))was allowed between FY2022 to FY2024			

Research Donations FY2021

Name of the Donation (Reseach Grants for Art-Related Studies)	Head	Donor	(Thousands of yen)
Scholarly Publication Support for Korean Studies	CHE Sohee	The Academy of Korean Studies Director of Center for International Affairs Yoong-Hee Jo,	1,256
Scholarly Publication Support for Korean Studies	KAMINO Chie	The Academy of Korean Studies Director of Center for International Affairs Yoong-Hee Jo,	1,235
Research Grant	KISHIGAMI Nobuhiro	Microbust Japan Co., Ltd.	200
Research Grant	TAKAHASHI Haruko	TAKAHASHI Haruko	650
Research Grant	HIROSE Koujirou	OTSUKA OHMI CERAMICS CO.,LTD.	100
Research Grant	HIROSE Koujirou	Generalasahi CO.,LTD.	200
Research Grant	HIROSE Koujirou	Saikoin	100
Research Grant	HIROSE Koujirou	Koyasan Shingon Buddhism Human rights bureau	200
Research Grant	HIROSE Koujirou	General Incorporated Association Lemonshimpo	100
Research Grant	HIROSE Koujirou	Sankei Shinbun Social Welfare Association	100
Aid for Research by the Mishima Kaiun Memorial Foundation FY2021 Academic Research Grant (Individual Research Grant)	CHE Sohee	Mishima Kaiun Memorial Foundation	1,000
			Total 5,141

Projects Concerning Cultural Resources and Information

Cultural Resource Projects / Information Projects

“Cultural Resource Projects / Information Projects” are based on proposals, and led by our full-time research staff. The aim is to organize and digitize cultural resources held by the Museum and related organizations such as universities, in order to promote their shared use and academic value. The “Cultural Resource Projects” are undertaken in the four areas of survey and collection, artifact management, exhibition, and museum-community alliance. The “Information Projects” are undertaken in the two areas of “video production and information gathering” and “digitization”.

FY2022 List of Cultural Resource Projects

Area	Proposed by	Project Name
Survey and Collection Project	SUZUKI Motoi	Collection of <i>Calaveras</i> for the Special Exhibition “Arte Popular: The Creative and Critical Power of Latin Americans”
Survey and Collection Project	MIO Minoru	Collection of Statues and Materials Related with Hindu Religious Practice
Survey and Collection Project	KISHIGAMI Nobuhiro	Collection of Sun Mask of the Kwakwakaw’akw on Vancouver Island in the Northwest Coast Region of North America
Survey and Collection Project	SUZUKI Motoi	Collection of Ornaments of Days of the Dead Altar for the Special Exhibition “Arte Popular: The Creative and Critical Power of Latin Americans”
Survey and Collection Project	IIDA Taku	Collection of “Boats” Made from Airplane’s Spare Fuel Tank
Exhibition Development Project	SHIMAMURA Ippei	Special Exhibition “100 Years of Mongolia: Encounters through Photography”
Exhibition Development Project	KIKUSAWA Ritsuko	Special Exhibition “ <i>Homō loquēns</i> ‘talking human’: Wonders of Language and Languages”
Exhibition Development Project	SUZUKI Motoi	Special Exhibition “Arte Popular: The Creative and Critical Power of Latin Americans”
Exhibition Development Project	IKEYA Kazunobu	Thematic Exhibition “Slash-and-Burn Cultivation Viewed by SASAKI Komei: From Itsuki Mura to the World”
Exhibition Development Project	ONO Rintaro	Thematic Exhibition “Maritime People and Art of Their World: Material Culture in Southeast Asia and Oceania”
Exhibition Development Project	YAMANAKA Yuriko	Traveling Exhibition “REGNUM IMAGINARIUM: Realm of the Marvelous and Uncanny: Kochi Prefectural Museum of History”
Exhibition Development Project	YAMANAKA Yuriko	Traveling Exhibition “REGNUM IMAGINARIUM: Realm of the Marvelous and Uncanny: Fukuoka City Museum”
Exhibition Development Project	IKEYA Kazunobu	Traveling Exhibition “Beads in the World: Ishikawa Nanao Art Museum”
Exhibition Development Project	IKEYA Kazunobu	Traveling Exhibition “Beads in the World: The Shoto Museum of Art”
Exhibition Development Project	MIO Minoru	Preparation for the Special Exhibition “The World of Images of Hindu Deities” (temporary title)
Exhibition Development Project	KAWASE Itsushi	Preliminary Research for the Special Exhibition “The World of Singer Poets” (temporary title)
Exhibition Development Project	KISHIGAMI Nobuhiro	Preparation for the Thematic Exhibition “Indigenous Cultures along the Northwest Coast Region of North America” (temporary title)
Museum Community Alliance Project	NOBUTA Toshihiro	Practical Study on Using the Museum for People with Intellectual Disabilities

FY2022 List of Information Projects

Area	Proposed by	Project Name
Video Production and Information Gathering Project	MIO Minoru	Recording videos on Gangaaur Festival in Rajasthan, India
Video Production and Information Gathering Project	SASAHARA Ryoji	The Production of a Multi-media Program “Dances, Songs and Festivals of Amamioshima”
Digitization Project	IKEYA Kazunobu	Creating Database of IWATA Keiji’s Southeast Asian Photo Collection

Cultural Resource Planning Projects / Information Planning Projects

“Cultural Resource Planning Projects / Information Planning Projects” are implemented continuously, or in a planned manner, to strengthen the Museum’s jointly used infrastructure. The “Cultural Resource Planning Projects” are undertaken in the three areas of artifact-related, exhibition, and museum-community alliance. The “Information Planning Projects” are undertaken in the two areas of video record production and digitization of exhibitions.

FY2022 List of Cultural Resource Planning Projects

Area	Implementation Manager	Project Name
Artifact Project	HIDAKA Shingo	Taking Pictures of Materials
Artifact Project	The Head of the Information Planning Section	Research Data Organization / Information Conversion and Usage Management
Artifact Project	HIDAKA Shingo	Research Data Organization / Information Conversion and Usage Management
Artifact Project	SONODA Naoko	Research on the Preservation and Management of Tangible Cultural Resources
Artifact Project	HIDAKA Shingo	New Production of Totem Poles (Ceremony, Reports)
Artifact Project	HIDAKA Shingo	Collection of Artifacts (Individual Collection)
Artifact Project	HIDAKA Shingo	Collection of Artifacts (Thematic Collection)
Exhibition Development Project	UDA Shuhei	Collection Exhibition “Cormorant Fishing in Contemporary China: Techniques of Fishers”
Museum Community Alliance Project	UEBA Yoko	Support for Volunteer Activities
Museum Community Alliance Project	UEBA Yoko	Workshop Hosting and Worksheet Exercises
Museum Community Alliance Project	FUKUOKA Shota	Music Day at Minpaku 2022
Museum Community Alliance Project	SAITO Reiko	<i>Kamuynomi</i> Rite, Traditional Ainu Dances
Museum Community Alliance Project	UEBA Yoko	Revision of the Min-pack “Expedition to the Steppes of Mongolia”
Museum Community Alliance Project	UEBA Yoko	Replication of the Min-pack “Expedition to the Steppes of Mongolia”
Museum Community Alliance Project	UEBA Yoko	Revision of the Min-pack “Seoul Children After-school”
Museum Community Alliance Project	OKADA Emi	The Project for Building up Partnership between the Museum and Society

FY2022 List of Information Planning Projects

Area	Implementing Entity	Project Name
Video Production by Subject	KAWASE Itsushi	Production of a Minpaku Visual Ethnography “Musical and Religious Practices by Ethiopian Immigrants in Japan”
Project for Video Production	Committee for Information Management	Making Panoramic Virtual Tours of Special Exhibitions, Thematic Exhibitions and Collection Exhibitions
Project for Video Production	Committee for Information Management	Making Videos of Special Lectures and Performances

The Fourth Term The National Institutes for the Humanities (NIHU) Transdisciplinary Projects

The National Institutes for the Humanities (NIHU) will implement “transdisciplinary projects” spanning six years commencing from FY2022 as fundamental and interdisciplinary research on human cultures, which forms the basis of NIHU. This will lead to functional enhancement to fulfill its mission as an inter-university research institute by expanding academic networks and by creating new fields.

Multidisciplinary Collaborative Projects: Interdisciplinary and Integrated Studies on Local Cultures: Aiming for the Emergence of Novel Communities

Minpaku Unit “Building Effective Utilization Models of Local Cultures” Project Director: HIDAKA Shingo

The sustainability and diversity of local cultures are currently critical in the Japanese Islands, due to frequent natural disasters and the transformation of local communities. Furthermore, the COVID-19 pandemic since 2020 has motivated efforts to establish a society that incorporates new lifestyles. Such circumstances suggest the urgent need for an unprecedented new society.

In a society to be newly created, a real sense of richness that has persistence and diversity that are adaptive to natural disasters and social change is lacking. This hindrance is eliminated through the incorporation of local cultures, with derived and inherited local wisdom and history, cultivated traditionally through daily activities.

Therefore, this study carefully investigated the local Japanese and Taiwanese museums’ activities based on the worldwide inheritance of local cultures, by developing an effective model using these cultures.



Restoration of local traditional cultural assets damaged in natural disasters

Network-based Projects: NIHU Global Area Studies Program

Global Area Studies Program Steering Unit Project Director: MIO Minoru

Conventional regional studies focusing on the essential nature and structure of a certain geographical region is no longer valid in contemporary world where globalization and borderlessness are advancing rapidly in various aspects such as politics, economy, society, and culture. At the same time, new form of nationalism and/or re-creation of the uniqueness of certain region are also arising in many places, and these phenomena has in turn had a great impact on the trajectory of globalization.

In order to keep up with these profound changes, it is indispensable to create a new form of area studies to elucidate the mutual dynamic relationship between the ‘global’ and the ‘areas’. Against these backgrounds, National Institute Humanities (NIHU) has launched a new area studies program, “Global Area Studies Program”, to clarify the mechanism of construction (or its failure) of global order from the perspective of comparison and relevance of regions. We will also seek for new concepts of areas appropriate for the globalizing post-post-colonial age under this program.

For this goal, under steering unit of the Global Area Studies Program, we have set up following four network-based area studies projects. The four research projects will elucidate factors of long-term sustainability and contemporary developments of each area. At the same time, in collaboration with the steering unit of the Program, they will explicate various aspects of relationships among these areas based on movements and exchanges of people, goods, information, and values.

The four centers established in the National Museum of Ethnology are promoting these area studies projects as a core or a sub-core center of each network.

Center of the Global Mediterranean at the National Museum of Ethnology (The core center of the project) Project Leader: NISHIO Tetsuo

This project’s research has been conducted mainly by the National Museum of Ethnology, in cooperation with three other Japanese bases. This method has two main purposes. The first is deconstruction of an existing area studies framework that divides countries surrounding the Mediterranean Sea into “Europe” in the north, and the “Middle East and North Africa” in the south, comprehensively exploring approaches which elucidate their historical and cultural relations as the “Mediterranean Area.” The second is to pursue joint research exploring the migration of people, goods, and knowledge on a global scale, stretching across the American continent in the west, East Africa and the Indian Ocean in the south, and Central Asia in the east, through the Mediterranean Sea after the Age of Discovery, by applying literature, history, and cultural anthropology as the main approaches along with mutual cooperation. We aim to establish new area studies, by invoking and considering a supra-regional and interdisciplinary approach.

The purpose of the National Museum of Ethnology Base is to consider the opportunities and mechanisms that cut off a specific space and re-designate it as an “area,” due to the migration of people and goods. The development of science and technology since the 17th century, the mobility of people, goods, and information has improved remarkably, leading to the onset of globalization. Although research in the fields of cultural anthropology and history investigating immigration and trade has accumulated, the role of movement in forming an area has not been adequately examined. By comprehensively elucidating mobility by land, sea, and air, we seek a methodology that dynamically grasps the phases in which time and space are regionalized.

Center of the Indian Ocean World Studies at the National Museum of Ethnology (The core center of the project) Project Leader: MIO Minoru

This area includes the east coast of Africa, the southern Middle East, the Indian subcontinent, and the western part of Southeast Asia, as well as the Indian Ocean itself which connects these regions, and the islands scattered in the ocean. This area has become a field of complex intersection of great civilizations and environments unparalleled in other parts of the world, where the Islamic, the Indic, and the modern Western civilizations have been intertwined for more than 500 years on the basis of tropical or sub-tropical ecology and subsistence systems which are different from those of temperate zone. The mobility of people, goods, and values since ancient times is still dynamic and quite active, even though the paths of these flows have always been changing responding to various constraints. At the same time, this area has become one of the hotspots of modern international politics, along with rising of new regional powers such as China and India.

While keeping in mind the long-term sustainability and changes of this region, Indian Ocean World Studies project will grasp dynamism of various actors’ flows, including natural environment, people, goods, values etc. At the same time, we will elucidate interdisciplinarily how people in this area have developed their own ways of ecological living and wisdoms of co-existence of different values. Specifically, the following four themes have been set for the project: 1) linkage and continuity of movement; 2) hybridity and creativity in literature and ideas; 3) development, medicine, and environment; and 4) peaceful coexistence. The four project centers, including the core-center at the National Museum of Ethnology, carry out its own research focusing one of the themes.

The theme for the center at the National Museum of Ethnology is the elucidation of “the linkage and continuity of movement.” Various flows of people, goods, information, money, and values of the Indian Ocean World are intrinsically expandable beyond any certain geographical boundary, making this world always porous. At the same time, these flows have not always been unidirectional and diffusional, but have moved circular ways. We define these phenomena as “cultural gyres”, and assume that overlapping and entangling trajectories of cultural gyres have shaped, sustained, and transformed the Indian Ocean World over 2000 years. Our aim is to grasp exact trajectories of these flows, and transformation in various levels (individual, local, regional culture and society) incurred by these flows through collaboration of anthropological field studies and historical research in this world.

Center of the Maritime Asian and Pacific Studies at the National Museum of Ethnology (The core center of the project) Project Leader: ONO Rintaro

This project has been promoted through a network of four bases, centered on the National Museum of Ethnology Base. The project aims to promote new area studies, that simultaneously address multiple areas of East Asia, Southeast Asia, and Oceania. It solely emphasizes on the perspective of sea areas, without focusing on area studies divided by the conventional concept of areas such as states based on land areas or East Asia, Southeast Asia, and Oceania. The common purpose of exploring island environments in the maritime world, and the transformation dynamics between culture and society was achieved by recognizing the presence of fundamental cultural commonality in the area, similar to the “Austronesian” language family area at the bottom. This research also aims at reaching a comprehensive understanding of cross-border movement and networking of people, goods, and information spanning, from Maritime Asia to Oceania in the modern age.

The wave of development in the island environments has changed people’s livelihoods considerably. It is directly linked to the destruction of considerable cultural heritage. This increasingly influences the traditions and acculturation of local communities. For the development of infrastructure and resources in islands, the National Museum of Ethnology Base devotes attention to (1) changes in subsistence activities of agriculture and fishery and their dynamics, which are directly affected by development. The base also clarifies the historical dynamics and current situation of (2) challenges in preserving ruins and cultural heritage that are affected directly by development and their conversion into tourism resources. Finally, it addresses (3) the activities that significantly resist against globalization and development, such as cultural reconstruction and identity reaffirmation.

Center of the East Eurasian Studies at the National Museum of Ethnology Project Leader: SHIMAMURA Ippei

The purpose of this project is to elucidate East Eurasia’s influence on the world, from the perspectives of cultural clashes and well-being. East Eurasia, as a loose concept of area, refers to the wide region circumjacent to China and Russia, including their neighboring Mongolia, the Korean Peninsula, and Japan, and areas close to or related to these countries. With due consideration to the globalization of policies, international relations, and the economy, the project clarifies the actuality of cultures clashing in their religious, cultural, economic, and political activities, and the creation of coexistence based on the modern historical background. It particularly addresses the Chinese, Russians, and their neighboring nations.

While supporting the Tohoku University Base, the core center of this project, the National Museum of Ethnology Base conducts research on religion and subculture, specifically examining whether they provide people hope within global relations in a phase that is different from the political and economic order. The former socialist bloc is characterized by a connection to institutional religions based outside the bloc, global cultures including New Age thought, and subcultures derived from the former Western bloc after the 1990s. China shows commonality in that it connected with foreign religions and cultures after reform and opening-up. Against the backdrop of East Eurasia’s globalization lag, occurring majorly during the post-socialist era, we clarify the sense of well-being provided to people by the newly created cultures, and the resultant cultural clashes.

National Institutes for the Humanities Co-creation Research Initiatives

The National Institutes for the Humanities encourages the development of research, by achieving the missions of the institutes for six years, from FY2022. It also promotes Humanities Co-creation Research Initiatives, which are joint research endeavors co-created by various organizations and people within and outside of the institutes.

Knowledge Co-creation Projects

Establishing Science for Universal Communication (S_COM) Principal Investigator: KIKUSAWA Ritsuko

The Museum and the National Institute for Japanese Language and Linguistics collaboratively serve as the principal bases for this project, and promote research in communication symbiotic science. The Museum pursues basic and practical research on visual communication through sign language and non-visual communication using sound and touch, specifically leveraging the use of accumulated research in sign language studies. By primarily examining sociolinguistics, corpus linguistics, and Japanese language education, the National Institute for Japanese Language and Linguistics conducts problem-solving research and studies, that address social problems occurring in interpersonal communication, including problems surrounding gender, ethnicity, older adults, and people with disabilities. It accurately elucidates the structure of language issues related to social difficulties. By cooperating with external researchers across various disciplines in the two institutions and its related fields of sociology, cultural anthropology, cognitive psychology, cognitive science, social psychology, medicine, neuroscience, and information engineering, the project seeks solutions to communication problems and paths leading to societal coexistence, including diverse languages and different communication modes.

Building Digital Library for Humanities Project Leader: IIDA Taku

This project aims to establish a platform that digitizes photographs, videos, and sound materials recorded worldwide by Japanese researchers and research institutions, for building an integrated database facilitating shared usage of these academic materials. The National Museum of Ethnology Base supports researchers and research institutions belonging to universities and research institutions in Japan. It uses a database system for photographic images that has been developed with the National Institute of Informatics, to make the support more effective and more accessible. Through this project, we aim to further facilitate researchers’ and research institutions’ investigation, and to create an interdisciplinary open science foundation by sharing publicly available data in research internationally. In cooperation with the National Institute for Japanese Language and Linguistics Base, which develops integrated database systems for sounds and moving images, we promote cross-disciplinary collaborative researches to develop the discipline of digital humanities.

Individual Research Projects

FY2022 Research Theme

Director-General

YOSHIDA Kenji	Study of Creation, Transmission, and Representation of Culture: A Museum-Anthropological Approach
---------------	--

Department of Advanced Human Sciences

ICHINO Shinichiro	Research Evaluation and Institutional Research of Ethnological Museum
	Relationships between Primates and Local People in Madagascar
OKADA Emi	Traditional Polyphony and Singing Culture of Naga Tribes in Northeast India
	Transmission of Hindustani Classical Music
KAWASE Itsushi	The Study on Theory and Practice of Ethnofiction
KIKUSAWA Ritsuko	Application of the Geographic Information System (GIS) to the Historical Analyses of Fijian Languages
SASAHARA Ryoji	Aspects of Transmission and Establishment of Performing Arts and Festivals through the Sea: Focusing on Performing Arts and Festivals along the Coast of the Sea of Japan
SUEMORI Kaoru	Application of Spectroscopic Images to Archive/Visualize Museum Objects for its Conservation/Utilization
SONODA Naoko	Integrated Collection Management of Ethnological Collection
HIDAKA Shingo	Building Effective Utilization Models of Local Cultures
HIRANO Chikako	Anthropological Study on Problem Drinking among Indigenous Australians
MARUKAWA Yuzo	Research of Information Service for Cultural Assets based on Informatics of Association
MIYAMAE Chisako	Development of Methods for Utilizing 3D Archive Data to Enhance Communication between Museums and the Public
YOSHIOKA Noboru	Descriptive Linguistics for Northern Pakistan Languages

Department of Cross-Field Research

UDAGAWA Taeko	Reconsideration and Reconstruction of the Public and the Intimate
OTA Shimpei	Integration and Variation of Socio-cultures in Korea
KASHINAGA Masao	Scripts and Texts of the Tai Dam in Vietnam
HAN Min	Anthropological Research on Society, History and Symbols
SHINMEN Mitsuhiro	The Thought and Strategy of Mircea Eliade and Emil Cioran through Exile
SUGASE Akiko	Identity Representation and Nationalism of Religious Minorities in Eastern Mediterranean Arab Countries
NARA Masashi	An Anthropological Study of Religions and Mobilities: A Case Study of Hui Muslims in Contemporary China
MATTHEWS, Peter J.	Ethnobotany and Prehistory in Asia and the Pacific
MATSUO Mizuho	The study on Substance Theory and the Concept of Race in South Asia
MINAMI Makito	Impact of COVID-19 on Nepalese Migrant Workers

Department of Modern Society and Civilization

IKEYA Kazunobu	Environmental Adaptation among Hunter-gatherers in Asia
ITO Atsunori	Practical Research on Indigenizing Anthropology Museums
UEBA Yoko	A Comparative Study of Handicraft Culture
UDA Shuhei	Relationship between Birds and Humans
SAITO Akira	A Comprehensive Study of the Viceroy Toledo’s General Resettlement in the Colonial Andes
SAITO Reiko	The Movements and Interchanges of People and Things in the Ainu and their Neighbors
HIRAI Kyonosuke	An Anthropological Study of the Genesis of ‘Negative Heritage’ in the Post-Conflict Era of Minamata City
FUKUOKA Shota	A Study on Influences of Audiovisual Media on Traditional Performing Arts
FUJIMOTO Toko	Society and Religion of Migrating People
MATSUMOTO Yuichi	Archaeological Study on the Complex Societies in the Prehistoric Andes
YAMANAKA Yuriko	Comparative Study of Marvels and the Uncanny: Human Imagination and the Natural World

Department of Globalization and Humanity

AISHIMA Hatsuki	Aesthetics and Body Culture in Contemporary Egypt
KURODA Kenji	Self-Other Relationship between Japan and the Middle East’
SUZUKI Nanami	Historical Anthropology of Aging-friendly Communities: Meaning of Multicultural Exchange in Super-aging Societies
SUZUKI Hideaki	Western Indian Ocean World in Move
CHE Sohee	Narratives of Illness: Society in the Context of Childbirth and Illness
NAKAGAWA Osamu	Anthropological Study on Capitalism and Its Periphery : The Case of Hmong Refugees in France
NISHIO Tetsuo	Globalization and Popular Cultures in the Middle East
NIWA Norio	Anthropology of Support
NOBUTA Toshihiro	1.An Anthropological Study on Indigenous Peoples in Malaysia 2.An Anthropological Study on Inclusive Society
MIO Minoru	Anthropological Study on Transformation of Religion and Culture in Western India
YAGI Yuriko	A Study on the Offering and Religiosity of Contemporary Andean People

Center for Cultural Resource Studies

IIDA Taku	Conceptualization of Integrative Transmission of Heritage and Memories
ONO Rintaro	Study of Island Migration, Subsistence, and Cultural Heritages in Maritime Asia and Oceania
KISHIGAMI Nobuhiro	A Cultural Anthropological Study of Historical Formation, Current of State, and Future of the Haida Culture and Society
SHIMAMURA Ippei	The Interdisciplinary Research on the Glocal Practices of Mongolian Buddhism
SUZUKI Motoi	Comprehensive Study of Latin American Collection in MINPAKU
TERAMURA Hirofumi	Research on the Formation of Ancient Silk Road Cities and East-West Exchange of People and Cultures.
NOBAYASHI Atsushi	The Ethnoarchaeology of Hunting and Gardening
HIROSE Koujiro	An Anthropological Study of the Concept of “Barrier-Free”
MISHIMA Teiko	A Theoretical Study on the Plural Significance of Ethnic Culture –From the Work Ethic of Merchant Migrants
MORI Akiko	An Anthropological Study on the Notion of the Social in Uncertain Times

Dissemination of Research Findings

Note: Those with no venue cited were held in the Museum.

The Museum promotes active dissemination of research findings, via symposia, research forums, and participation of staff in international academic meetings using the “Research Results Presentation Program” under the Director-General’s Leadership Program. Using various external funds, the Museum has conducted numerous symposia and forums in FY2021 (see below). For information about Minpaku Special Research Projects symposia and forums, please see p. 8. and 9.

Honors and Awards

Award recipient	Date	Awards
UEBA Yoko	July 27, 2021	The 36th Daido Life Foundation Incentive Award for Area Studies for “A Comparative Study of the Textile Culture in Contemporary India”
ONO Rintaro	July 27, 2021	The 36th Daido Life Foundation Incentive Award for Area Studies for “Archaeology and Anthropological Study of Marine Resources Use by Human in Island Southeast Asia”
KAWASE Itsushi	July 27, 2021	The 36th Daido Life Foundation Incentive Award for Area Studies for “Pioneering New Fields of African Area Studies through Innovative Production of Ethnographic Films”
SEKI Yuji	November 17, 2021	Awards for Person of Merit for Japanese Association of Museums 2021
KAWASE Itsushi	December 21, 2021	Literary and Art Criticism of the 43th Suntory Prize for Social Sciences and Humanities for “ <i>Singer Poets in the Ethiopian Highlands–The People Who Live by Singing</i> ” ONGAKU NO TOMO SHA
KAWASE Itsushi	March 24, 2022	The 11th Umeshao Tadao Mountain and Exploration Literary Award for “ <i>Singer Poets in the Ethiopian Highlands–The People Who Live by Singing</i> ” ONGAKU NO TOMO SHA

Public Academic Lectures

The Museum organizes public academic lectures in Osaka and Tokyo. These facilitate cross-cultural understanding and help to increase public recognition of the Museum.

Public Lecture

“Family Figures in Flux: Aging Society with Low Fertility from an Anthropological Perspective”

Date	November 12, 2021
Venue	Nikkei Hall(Tokyo) with online streaming
Lecturers	MORI Akiko MATSUO Mizuho OKADO Masakatsu
Attendance	335
Co-host	NIKKEI INC.

Public Lecture

“The Pulse of Images”

Date	March 25, 2022
Venue	Oval Hall (Osaka) with online streaming
Lecturers	NAKAZAWA Shimichi KAWASE Itsushi SUEMORI Kaoru HIRANO Chikako
Moderator	HIRANO Chikako
Attendance	369
Co-host	Mainichi Newspapers



Online meeting

Online Meeting of Minpaku Special Research Project
“Performing Arts and Conviviality”

Date	June 7, 2021 – March 21, 2022 (Four times) (online)
Coordinator	Fukuoka Shota
The total number of participants	97

Online Seminar co-sponsored by Minpaku Special Research Project

“Global Area Studies: Toward a New Epistemology for Mapping the Globalizing World”

Date	November 23, 2021 – March 29, 2022 (Seven times) (online)
Coordinator	NISHIO Tetsuo
Fund	Minpaku Special Research Projects
The total number of participants	180

* Due to the spread of COVID-19, some of scheduled international symposiums were conducted as online meeting.

Publication of Research Results FY2021

Publications by the Museum

Bulletin of the National Museum of Ethnology

The Bulletin of the National Museum of Ethnology is a research journal that contribute to the advancement of ethnic studies and cultural anthropology. It publishes articles, book reviews, documentary materials, and research notes related to ethnic studies, anthropology, and related fields. Published four times a year.

Vol. 46, No. 1	Article WAKASONE Ryota, Dynamics of Faith in the Periphery and the Buddhist Concept of Kingship: Conversion of Power of the Indigenous Kha People of the Mountains by the Saints of Lao in the Early Twentieth Century Special Theme Future of Academic Activities Opened with Digital Image Databases IIDA Taku, Introduction: DiPLAS Support Project for Building Image Database: Its Outline and Related Publicity Events Articles KONISHI Junko, Creating the Database of “A Collection of Osamu Yamaguti (Yamaguchi)’s Photographs of Asia-Pacific Musicology” as a Practice of Applicative/Applied Musicology: A Brief History of Ethnomusicology and Photographs of Okinawa and Amami Musical Instruments of the 1970s HARADA Kenichi, Analysis of Imagery in Regional Communities: For Visual Records of Daily Lives, What Do Residents and Researchers Include and Exclude? Research Notes FUKUSIMA Yukihiro, Can Local Libraries and Museums be Depositories for Vernacular Photographs? ISHIYAMA Shun, Digitization, Databasing, and Academic Utilization of Area Studies Pictures: Experiences with the DiPLAS Support Project MARUKAWA Yuzo, Image Annotation Support through Databases and Editing Systems
Vol. 46, No. 2	Special Theme Humans and Things Weaving a Performance Together: Exploring an Intersection of the Anthropology of Materiality and Performing Arts Studies YOSHIDA Yukako, Introduction Articles TANAKA Miwako, Beyond “Function” and “Metaphor”: Wheelchairs in the Video-dance <i>Tiresias</i> MASHINO Ako, Tangible and Intangible in <i>Arja</i>, a Balinese Musical Dance Theater: Crown, Body, and Stock Characters YOSHIDA Yukako, Trans-border Flow of Music as an Encounter with Instruments: Cases of Balinese Gamelan in Japan Research Resource NIWA Norio, Explorer Toshio Asaeda: Training in the Period before Participation in the American Expeditions of 1930
Vol. 46, No. 3	Article ONO Rintaro, Riczar FUENTES, Ayami NAKATANI, Miwa KANETANI, and Yoko UEBA, “Bamboo Hypothesis” Revisited: Functions of Prehistoric Stone Tools and Plant Use in Wallacea Research Note MURAKAMI Daisuke, Thoughts on the <i>klu</i> (naga) Cult in Tibet
Vol. 46, No. 4	Research Note YAMAGUCHI Toru, Reading into Ethnographic Objects: A Dog Carving Collected from the Former Netherlands New Guinea Research Resources YOSHIOKA Noboru, Eat a Spoonful, Speak a Night Tale: A Domaaki (Hi)story Telling NISHIO Tetsuo, Ibn al-Marzubān’s <i>The Book of the Superiority of Dogs over Many of Those Who Wear Clothes</i>: Japanese Translation with Critical Notes

Senri Ethnological Studies (SES)

Senri Ethnological Studies presents individual works, article collections, and annotated bibliographies regarding specific peoples, regions, or themes, with the goal of publicizing in Japan and overseas the results of research conducted by the Museum. An occasional publication.

No. 107	SANO Fumiya and Ritsuko KIKUSAWA (eds.), <i>Minpaku Sign Language Studies 2</i>
No. 108	KIKUSAWA Ritsuko and Fumiya SANO (eds.), <i>Fijian Languages, Cultures, and Their Representation</i>
No. 109	IIDA Taku (ed.), <i>Heritage Practices in Africa</i>
No. 110	HAN Min and Norio NIWA (eds.), <i>Rethinking History: Perspectives on Recording Media, Practice, and Construction</i>

Senri Ethnological Reports (SER)

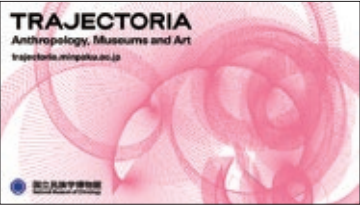
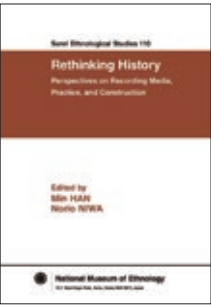
The purpose of Senri Ethnological Reports is to publicize as quickly as possible the results of research conducted by the Museum’s faculty, cooperating faculty, and research fellows. SER publishes the results of field investigations regarding specific peoples, regions, or themes that require preliminary reports, as well as items of a source material nature such as bibliographies and data collections. Published in Japanese and other languages. Occasional publication.

No. 153	NISHIO Tetsuo and Hiroshi NAWATA (eds.), <i>Study of the Motoko Katakura Fieldwork Materials</i>
No. 154	ROSSABI Mary (trans.), ROSSABI Morris and Yuki KONAGAYA (eds.), <i>Master of Mongolia, A.D.Simukov: His Life and Works</i>

TRAJECTORIA

TRAJECTORIA is an international multimedia peer-reviewed journal situated at the intersection of anthropology, heritage studies, museum studies, and the arts. It is published annually online by the National Museum of Ethnology.

Vol. 3	Multimedia GRYTTER Simone and Ken ARNOLD, Looking at Bodies: In, At, Up, and Under Special Theme Ethno-graphic Collaborations: Crossing Borders with Multimodal Illustration HAAPIO-KIRK Laura, Introduction HAAPIO-KIRK Laura and Megumi ITO, Turning Points RUMSBY Charlie and Ben THOMAS, Waters of Death and Life: The Evolution of an ‘Ethno-Graphic’ GONZÁLEZ José Sherwood, Story of Mirrors: Together They Cross the Border THEODOSSOPOULOS Dimitrios, Collaborative Experiments in Graphic Ethnography: Emulating Political Cartooning Discussion: Collaborating through Illustration: Motivations, Methods, and Meanderings Carte Blanche THEODOSSOPOULOS Dimitrios, Graphic Ethnography and Its Multimodal Gifts
--------	--



Minpaku Tsushin Online

Minpaku Tsushin Online is a magazine that describes the academic characteristics and unique features of and achievements resulting from individual research projects conducted at the Museum in a manner that is comprehensible to researchers and the general public. The magazine launched online publications in FY2019 and has published electronic books.

No. 4	Special Interview Director-General YOSHIDA Kenji “The Time of Minpaku” Has Finally Arrived?: Six Years Past, Six Years Hence Final Report NIHU Transdisciplinary Project An Info-forum Database for Minpaku Micronesia Collections: Focusing on Materials Collected in the Early 20th Century HAYASHI Isao, Historical Contextualisation of Ethnographical Materials from Micronesia and Their Inheritance as Cultural Heritage NIHU Transdisciplinary Project Information Disclosure Project for Jidai Gangu Collection HIDAKA Shingo, Overview of the Jidai Gangu Collection Database Inter-University Research Project Naturalizing Cultural Anthropology NAKAGAWA Satoshi, Have We Successfully Naturalised Cultural Anthropology?
No. 5	Start Up Inter-University Research Project Interdisciplinary Study on Reproductive Technology and Childrearing in Modern Asia SHIRAI Chiaki, Diverse Relationships between Reproduction and Technology in Asia Inter-University Research Project The Anthropology of Vulnerability TAKEZAWA Shoichiro, Vulnerability of Human Being Inter-University Research Project Relationships between Indigenous Peoples and Information Societies DOI Kiyomi, The Significance of Reconsidering “Uncertainty” in the Context of Tourism Inter-University Research Project Reconstruction and Revitalization of Japanese Folk Music through Utilizing the Toyo Ongaku Gakkai Sound Archives Preserved in the National Museum of Ethnology UEMURA Yukio, Toward the Construction of Sound Archives Mediating Research and Transmission of Japanese Folk Music Inter-University Research Project A Study on the Formation and Use of Pacific Ethnographic Collections by the Japanese: Focusing on the Toshio Asaeda Collection of the National Museum of Ethnology NIWA Norio, Exploring the Formation of the Japanese Pacific Collection through an Analysis of Old Photographic Sources from the Pacific Region Inter-University Research Project A Project to Touch the Shapes of Tradition by Combining 3D Printing with Traditional Materials and Techniques MIYASAKA Shinji, Research on the Appeal of Iconography Approaching from “Digital × Analog” and “Haptic × Visual” Perspectives



Publications outside the Museum

UDA Shuhei (ed.), *Wildness and Human Logic: Four Approaches to Post-domestication*, University of Tokyo Press
NOZAWA Toyochi and Itsushi KAWASE (eds.), *Thoughts from the Predawn of Music: Beyond Musicking*, Artes Publishing Inc.
UDA Shuhei, *Cormorants and Humans: An Ornithological Folklore Study of Cormorant Fishing in Japan, China and North Macedonia*, University of Tokyo Press



Minpaku Visual Ethnography

Minpaku Visual Ethnography is a DVD series created for research and educational purposes. The contents included visual works recorded during fieldwork. Four volumes are released annually and distributed to universities and research institutions nationwide and to national and public libraries.

Released in FY2021

Volume 42	TERAMURA Hirofumi, The life ways in Oasis cities
Volume 43	HAN Min, Ancestor Worship and Ancestor Shrines of the Han People
Volume 44	NISHIO Tetsuo, Andalusian music today: Festival in Chefchaouen, Morocco
Volume 45	FUKUOKA Shota, Shadow Puppet Theater in Kelantan, Malaysia



Minpaku Repository

By using NII’s (National Institute of the Information) institutional repository system, the Minpaku Repository, which includes in its holdings Minpaku’s own publications, allows an open access to Senri Ethnological Studies, Senri Ethnological Reports, the Bulletin of the National Museum of Ethnology, Senri Ethnological Research Reports Supplements, Minpaku Tsushin, National Museum of Ethnology Info-Forum Museum, electric journal “TRAJECTORIA”, and authorized theses and dissertations which were published outside of Minpaku. As at the end of FY2021, the total number of publications in the repository was about 5,240. The average number of paper downloads was about 42,998 per month.

Joint-Use Facilities for Scientific Research

Purpose of Establishment

The museum has nondestructive testing and material analysis equipment systems to conduct primary analysis of folklore materials, cultural assets, and museum materials. The facilities was established in December 2017 to promote the active use of the systems by various organizations and researchers in cultural anthropology and relevant disciplines in its peripheral domains thereby contributing to increased joint use in scientific researches.

List of Equipment

- X-ray CT scanning system
- 3D printer
- Three-dimensional measuring system
- Pyrolyser gus chromatograph - mass spectrometer
- Ion exchange chromatograph
- X-ray fluorescence spectrometer
- Temperature and humidity chamber
- Fourier transform infrared spectrophotometer (FT-IR)
- Digital microscope



X-ray CT Scanning System



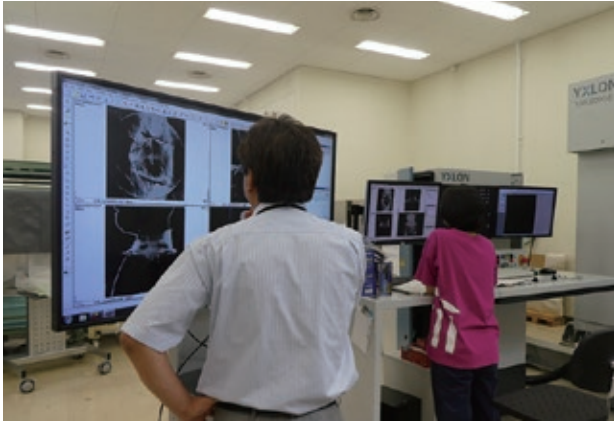
3D Printer

Records of Use

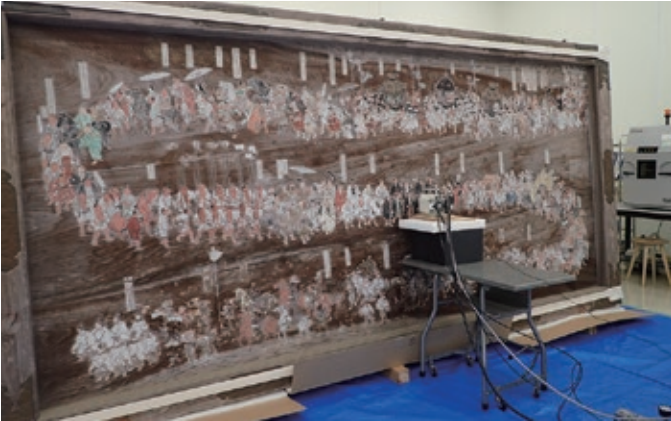
2019	
Records of Use	Organizations That Used the Facilities
13 cases	Hitotsubashi University, Hokkaido University, Tenri University Sankokan Museum, Otsu City Museum of History, Kesennuma City Board of Education, Maibara City Board of Education, Daitokuji Temple, NouHakusan Shrine, Jinne-in Kannonji temple, UmamiokaWatamuki Shrine, etc

2020	
Records of Use	Organizations That Used the Facilities
7 cases	Kanazawa Gakuin University, The Museum of Kyoto, Tenri University Sankokan Museum, Iwate Prefectural Government Department of Culture and Sports Culture Promotion Division, Daitokuji Temple, NouHakusan Shrine, UmamiokaWatamuki Shrine

2021	
Records of Use	Organizations That Used the Facilities
12 cases	Tenri University Sankokan Museum, Cultural Heritage Disaster Risk Management Center,Soshisha;Minamata Disease Support Center,Kosetsu Museum of Art,Itoigawa City Board of Education,Otsu City Board of Education,Kesennuma City Board of Education,Yamatotakada City Board of Education, Nou Hakusan Shrine,Oka Bokkodo Co.,Ltd,WORDSPRING.inc,etc



Examination Using X-ray CT Scanning



Examination Using X-ray Fluorescence Spectrometer

How to Use

Please contact the Artifact Management Unit of the Information Planning Section if you are interested in using the systems.

Artifact Management Unit of the Information Planning Section

TEL +81-6-6878-8392

FAX +81-6-6878-8242

Mail hyohons@minpaku.ac.jp

Minpaku Library

Service Information

Daily from 10:00 a.m. to 5:00 p.m.(Entry permitted until 4:30 p.m.), except Sundays, National Holidays, and days that the Museum is closed.
Visitor qualifications: The library is open to all. The library card is required for lending books. Some materials may not be available.
URL <https://www.minpaku.ac.jp/sharing/library>

1. Encouraging Educational and Research Activities

Minpaku’s library collection includes many highly specialized works. Facilities include four microfilm readers and a color copy service. The library is staffed by qualified librarians and provides full support for the educational and research activities expected of an Inter-University Research Institute.

2. Promoting Public Access to the Library Catalog through the National Institute of Informatics

In FY2021, printed materials in 21 languages were cataloged, and the repository’s holdings reached 639,661 volumes.
Under the NACSIS-CAT (a comprehensive national database of general indices) Retrospective Entry Project, 2,977 microfiche records (books 2,757 items and 220 articles of 20 titles of newspapers/magazines) were entered. With this, 98% of Minpaku’s library data have now been entered.

3. Social Contributions

All users can check out books from the library. As of FY2021, the library had 169 outside registered users making regular use of the library, who borrowed 964 items.

4. MINPAKU Library Catalog

The library catalog is open to the public and can be searched by anyone, anywhere from a personal computer or mobile phone. In FY2021, the catalog was accessed from computers 257,155 times and from mobile phones 320 times.



Library Reception Counter



Current Periodicals Section



Neatly Archived Materials

Ethnology Research Archives

Since its establishment, the Museum has accumulated a wide range of resources, like research notes and papers of anthropologists and ethnologists, including audio-visual records from their fieldwork. To make good use of these materials, the Archives group under Information Management Committee continued in FY2021 to investigate the condition of archive resources and to develop inventory lists. The Museum will investigate continuously the condition of archive resources and develop and digitalize inventory lists, with the aim of making them open to public.

- AOKI Bunkyo Archive
 - ISHIGE Naomichi Archive
 - IZUMI Seichi Archive
 - IWAMOTO Kimio Archive
 - UCHIDA Isao: East Asian Culture Archive Mainly for Taiwan and Japan in 1930s
 - UMESAO Tadao Archives
 - EGUCHI Kazuhisa: AfricaAsia Language Archive
 - OUCHI Seiko Archive
 - OKI Morihiro Archive (Indian Ethnological Cultural Resource Archive)
 - KATSURA Yonenosuke Archive
 - KANO Tadao Archive
 - KIUCHI Nobuyuki Archive
- KIKUZAWA Suelo Archive
 - KURITA Yasuyuki and BEFU Harumi: Japanese Gift-giving Archive
 - KOBAYASHI Yasuyoshi: Southern Taiwan Indigenous People Archive
 - SHINODA Osamu Archive
 - SUGIURA Kenichi Archive
 - The Japanese Scientific Expedition for Nepal Archive
 - HIJIKATA Hisakatsu Archive
 - MABUCHI Toichi Archive
 - MARUTANI Akira: Kutsugi Village Harihata Life Data Archive
 - “Regional Typology of Japanese Culture Study Group” Archive

UMESAO Archives

April 2013 saw the creation of the Umesao Archives, where the enormous volume and variety of field notes, sketches, photographs, memos, draft manuscripts, publications, reviews and other intellectual assets produced by Minpaku’s first Director-General, UMESAO Tadao, are stored. An archivist will analyze and organize this material and provide support primarily for scholarly research.

Materials

Items in the Museum Collections Offered for Loan FY2021

In addition to using the items in its collection for internal research activities, the Museum offers items for loan to universities, other museums, and external organizations for educational and research purposes as part of its efforts to contribute to the public interest. To inquire about borrowing items from the Museum’s collection, contact the Minpaku Collections Help Desk. A total of 203 inquiries were received during FY2021.

Minpaku Collections Help Desk

TEL /FAX +81-6-6878-8213

URL <https://www.minpaku.ac.jp/sharing/guide/helpdesk>

1. Number of Loans Made: 9, Number of Items Loaned: 1,723

Among the projects listed above, those for which the Museum’s lending resources comprise more than 50% of the entire exhibit items are the following:

Borrower	Exhibition Title	Loaned Items	Exhibition Period	Items Loaned / Total Number of Items Loaned / % of Loaned Items Relative to the Entire Exhibition
Shimane Museum of Ancient Izumo	2021 Special Exhibition“Toys Expo—Children in Modern Japan”	Jidai Gangu collection	July 2 - August 22, 2021	1418 items / 1451 items, 98%

2. Number of Special Loans (i.e., Loans for the Purpose of Photo-shooting, Close Examination for Research or Loan of Original Film): 103, 1,245 items

Of the above, 22 loans were made to universities for the use of photographs as references for survey research and writing, 12 were made to museums for the use of photographs in survey research and exhibitions.

3. Number of Loans of Audio-Visual Materials: 113, Number of Items Loaned: 739

Of the above, 30 loans were made to universities (217 items), and 29 loans to individual researchers and research groups (238 items).

4. Books and Periodicals

Number of special use (Use of original film or photo-shooting) 5 (of which 1 was for the use of photos as references for survey research and writing)

Photocopy orders: 2,263 (of which 1,800 were from universities)
Inter-library loans: 496 (of which 471 were from universities)
Photocopy orders: 146
Inter-library loans: 306

5. Research Archive Materials

Number of browsing instances: 19
Number of instances of special utilization: 18



Artifact Storage Area

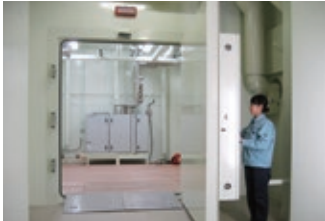
Storage of Academic Materials

The Museum has accumulated a large collection of academic materials through its research. Many of the materials are organic artifacts that generally have the least resistance to insect and fungus damage. Therefore, the Museum takes special measures to repel and kill insects and protect its collection. For example, newly acquired artifacts from abroad are taken to a fumigation chamber where they are treated with chemical insecticides and germicides, because the natural environment and ecosystem of their place of origin are substantially different from those of Japan. Artifacts that have insect damage in Japan, however, are subjected to a non-chemical insecticidal process as required, due to the nature of the materials. In this way, different insecticidal processes are used, depending on the place of origin, the extent of damage, and the nature of the materials. To enhance insecticidal efficiency and better protect artifacts from insect damage in a unique way, in 2007 a large high/low temperature walk-in treatment chamber was installed in the Museum and the existing fumigation chamber was upgraded to a multi-functional chamber capable of carbon dioxide treatment and low oxygen concentration treatment. Also, a catalytic combustion type chemical abatement system was introduced to ensure the safe treatment of waste chemicals, thus realizing a materials management system that is friendly to people, artifacts, and nature.

These state-of-the-art systems are one of the results of the research on the conservation science of artifacts that the Museum and other university researchers have been jointly conducting to ensure effective use of its artifact collection.



The High/Low Temperature Walk-in Treatment Chamber



A Multi-functional Fumigation Chamber Capable of Carbon Dioxide and Low Oxygen Concentration Treatments

Utilization of Minpaku for University Students and Faculty Members

We have established a system to encourage wide-ranging utilization of our research outcomes, exhibits, archived resources, cultural and academic information and facilities, for university education and research.
URL <https://www.minpaku.ac.jp/teacher/university/manual>

Use of Exhibition Halls

If you wish to use the Exhibition Halls for a lecture, seminar or official event (such as an orientation meeting for new students) of your university under the supervision of a faculty member, we will waive the admission charges, if you apply before the event.
If a faculty member can not supervise the event, or if a professional or specialized training college wishes to use the Museum for a specialist training course, the admission charges will be discounted upon presenting the syllabus or any document that describes the syllabus content.



Use of Exhibition Halls

Use of the Library

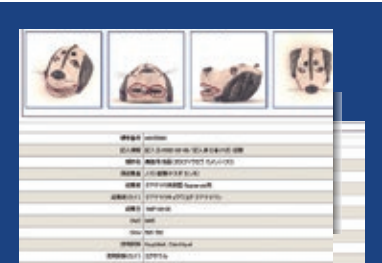
We have approximately 690,000 books and other media resources that focus mainly on cultural anthropology and ethnology. We encourage visits to the Library as a part of university education.

Use of Artifacts and Resources

We have approximately 345,000 artifacts and resources collected from all over the world. They can be used for university education or research for free, under certain conditions.

Use of Audio-Visual Materials

We have approximately 70,000 Audio-Visual Materials from all over the world, including those produced by Minpaku. You can view about 616 Videotheque Programs on DVD. Some video materials are distributed through online streaming to make them available for online classes.



Use of Databases

Use of Databases

An enormous amount of information is provided in our databases for collections and research results.

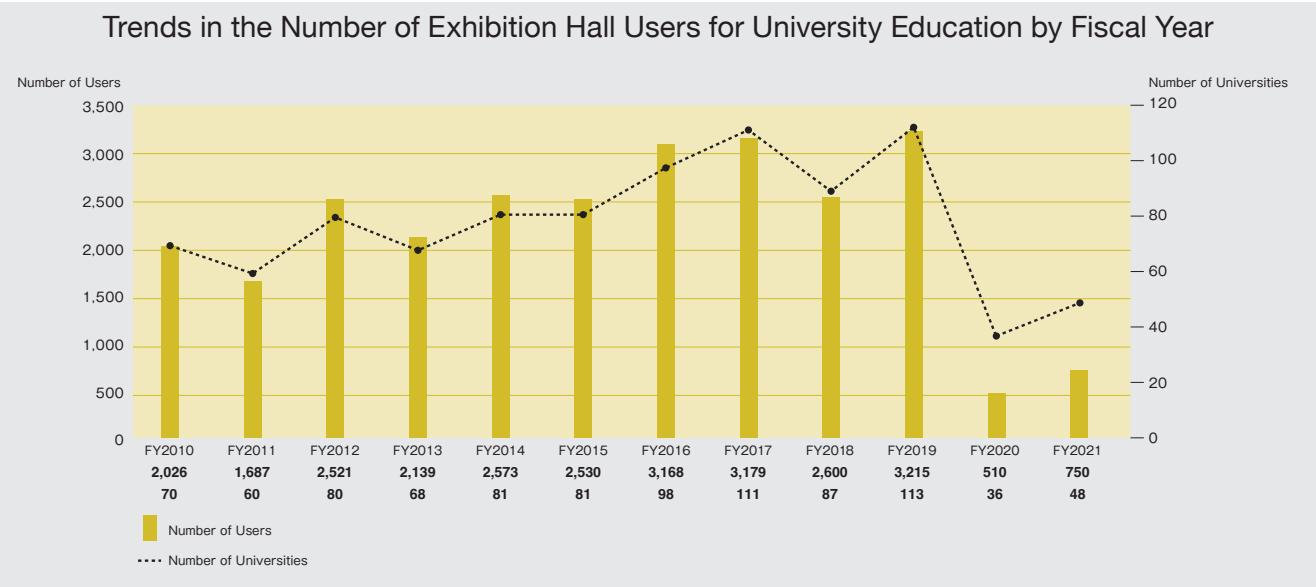
Development of Young Researchers

“Minpaku Junior Researcher’s Seminar” is regularly held to promote joint use of the museum by young researchers. The two-day seminar consists of a keynote speech by museum faculty and presentation and discussion by participants. Additionally, it organizes library and storage area tours for young researchers to know more about various joint use systems and a facility directory.



Minpaku Junior Researcher's Seminar

Records of Use (Free-of-charge Use) 48 Universities, 750 users (FY2021)



Exhibitions

Concept and Organization of Exhibitions

At the National Museum of Ethnology, exhibitions are designed to present the latest achievements of anthropological, ethnological and other related scientific research to the public through a variety of media. In doing so, the Museum hopes to enhance public awareness of different cultures around the world and foster greater cross-cultural understanding. The exhibitions consist of Main Exhibitions and the Special Exhibitions. The Main Exhibitions are mostly permanent, and are designed to deepen understanding among visitors of cultural diversity and commonality. The Special Exhibitions, on the other hand, highlight specific topics and are held several times annually for a limited period of time.

Main Exhibitions

The Main Exhibitions are arranged into regional and cross-cultural exhibitions. The regional exhibitions cover Oceania, the Americas, Europe, Africa, and Asia, including Japan. The regional exhibitions start with Oceania, and progress as if traveling eastwards around the world to finish in Japan.

This arrangement allows visitors to view Japanese culture in comparison with other cultures. In designing the exhibitions, the National Museum of Ethnology adhered to the notion that all human cultures around the world have equal value; the notion has remained unchanged since the inception of the Museum. Accordingly, the exhibitions are designed to help visitors respect cultural differences among peoples, represented in the rich diversity of human lifestyles. These exhibitions are also characterized by their emphasis on clothing, food and housing, which gives visitors a clear idea about lives in different regions around the world. The cross-cultural exhibitions, on the other hand, focus on specific themes, not regions, and currently accommodate exhibitions on music and language.

Given the substantial changes of the social and cultural situation in the world since Minpaku's opening in 1977, the Museum has been renovating its exhibitions since FY2008, and it has completed in FY2016.

In the Thematic Exhibition Galleries in the Main Exhibition Hall, temporary exhibits display themes related to contemporary issues and cutting-edge research. Other individual themes are also presented.

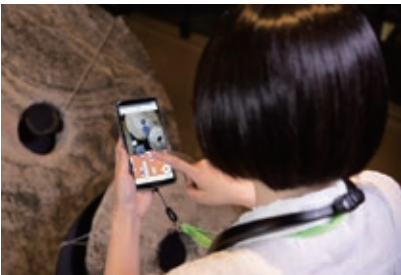
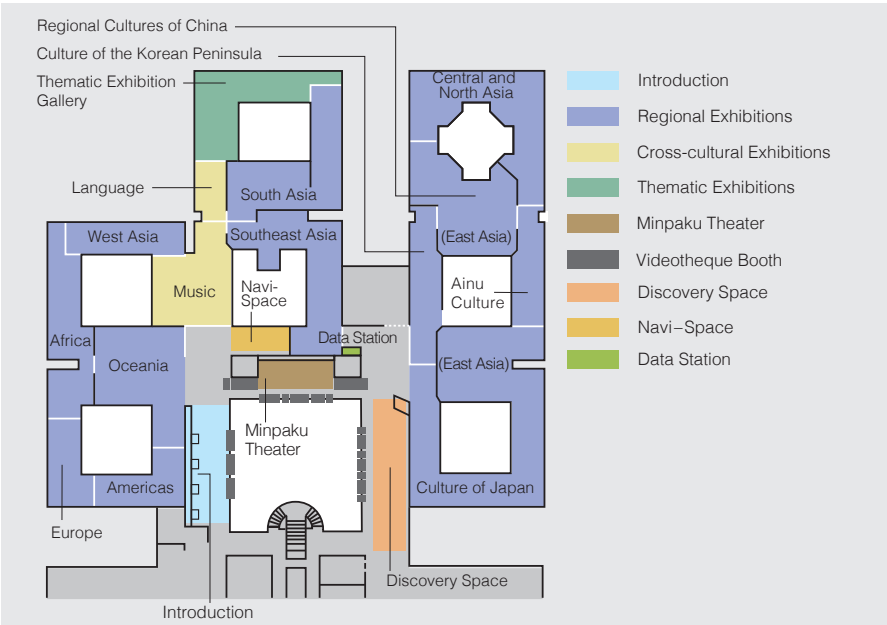
These Thematic Exhibition Galleries can also be used as a shared exhibition gallery to expedite displays of the latest research trends of universities and other institutions in Japan and overseas.

The Museum encourages the introduction of information devices into its exhibits.

One such device is the Videotheque. As the world's first on-demand video library of its kind, it was developed by the Museum when it opened its doors to the public. Video programs provide visitors with glimpses of the living cultures of the world's peoples and let them see how the artifacts shown in the Main Exhibition Hall are actually used.

The system allows visitors to select a video program from the Museum's collection, which now contains 837 titles. In FY2022, the Minpaku Theater was established for visitors to become more immersed in the images. A booth exists to facilitate the visualization of dynamic videos for a large group of people on a large screen, along with booths allowing a small group of people to observe images comfortably on a large monitor. The second example of information devices held by the Museum is the Minpaku Digital Guide, which was developed in 1999 as the world's first portable audiovisual device using videos and voices to describe exhibits. The Minpaku Digital Guide provides various types of information, such as how the items exhibited were used, in what locations they were used, and by what kind of people they were used. The Minpaku Digital Guide was renewed in 2020 as a system equipped with new functions such as guidance for museum facilities and a link with Videotheque. Now, the system allows visitors to watch videos describing the exhibits on smartphones while checking their locations on the explanatory hall map displayed in their hand. Linking to Videotheque by LinkRay (visible light communications) automatically introduces Videotheque programs related to exhibition materials for which the visitor has watched the commentary. These videos have been translated into multiple languages. Videotheque now provides 367 programs, out of the total of 837 programs, in nine different languages. The Digital Guide, produced in 2019, includes 328 programs that were made available in nine languages through machine translation of seven languages based on English subtitle data.

In the Discovery space, visitors can use the terminals to access and compare a wealth of information on artifacts currently on display. Related books and journals as well as Minpaku publications are also available.



Minpaku Digital Guide
This guide describes facilities and exhibits in the Exhibition Halls using the museum map. It shows videos and information related to the locations artifacts were found, how they were used, and by whom they were used. Explanations are currently available in nine languages, including Japanese, English, and Chinese.

Regional Exhibitions

The regional exhibitions focus on Oceania, the Americas, Europe, Africa, West Asia, South Asia, Southeast Asia, Central and North Asia, and East Asia. The figures appearing next to each exhibition space's name indicate the exhibit area in square meters.

Oceania 660m²



Human Dispersal into Oceania **Living off the Sea** **Living on Islands**
Contact with the Outside World **Expressions of Indigenous Identity**

In Oceania, tens of thousands of islands, large and small, are scattered across the surface of the ocean. The islands are inhabited by peoples who grow root and tree crops and are highly skilled in the arts of seamanship and navigation. In the sections "Human dispersal into Oceania", "Living off the Sea", and "Living on Islands", we explore the diverse techniques developed to survive in island environments with limited resources. We also examine how indigenous cultures have been affected by encounters with the outside world in the sections "Contact with the Outside World" and "Expressions of Indigenous Identity".

Europe 250m²



Agriculture and the Annual Cycle **Religions and Beliefs**
Industrialization **Europe in Transformation**

From the 16th to the 20th centuries, Europe was the center from which Christianity and modern institutions, technologies, and knowledge spread around the world. Now the tide has turned, and immigrants from all over the world are making themselves part of European society. Here we explore the interactions of tradition and religion, rationalization and industrialization, and immigration in the formation of modern Europe, focusing on the concept of "time".

The Americas 320m²



Encounter **Eating** **Clothing**
Prayer **Creativity**

The vast expanses of the Americas range from polar regions to tropical rain forests and encompass a huge diversity of natural environments. Peoples adapting to these environments developed distinctive lifeways. Then came conquest and colonization by European peoples, with foreign influences permeating everyday life. Here our focus is on clothing, diet and religion. While clarifying the relationship between their underlying diversity and historical influences, we also draw attention to traditional artists and craftsmakers who creatively combine tradition with modern values in their works.

Africa 500m²



Excavating History **Urban Life** **Work** **Adornment**
Prayer **Africa Today**

Africa, the birthplace of humanity, has gone through profound changes and has always been tied to the outside world. The diversity of cultures and languages that we see in the African continent today is the result of these changes. In this exhibit, we introduce the way in which people live in Africa today, focusing on four different aspects—"urban life", "work", "adornment" and "prayer". We also look at the efforts people are making to rediscover their history. We hope that this exhibit fosters renewed understanding toward the people of Africa, who live in the same present as we do.

West Asia

310m²

Religion
Living in the Desert
The Palestinian
Diaspora
Coffee as
Global Culture
Sound Culture
and Pop Culture



The people of West Asia, or the Middle East, call their land in Arabic *mashriq*, ‘the land of the rising sun’. Historically, they have kept close ties to the *maghrib*, ‘the land of the setting sun’, that is, North Africa. These regions consist mainly of dry lands inhabited by nomadic peoples. At the same time, urban cultures flourished in large cities such as Baghdad and Cairo. Islam is the majority religion in West Asia, but this region is also the cradle of Judaism and Christianity. This gallery highlights religious practices, nomadic life, women’s dress, and music and dance to show how global change has reached the lives of people in West Asia.

Southeast Asia

730m²



Subsistence
Everyday Life in a Village
Entertainment and Recreation
Urbanscapes

Southeast Asia is encompassed by forests and seas. The climate is tropical to subtropical; people start work early in the morning, and return home and nap in the middle of the day when temperatures can approach 40°C. In the evenings and after squalls have passed, temperatures start to fall. People go out to shop or go back to work in their fields. In the cool of the evening they relax, head to outdoor stalls for meals with friends or family, or relax and enjoy traditional performing arts. The theme of this exhibit, which introduces a rich variety of ethnic cultures, is “A Day in the Life of Southeast Asia”.

South Asia

600m²



Religion—Tradition and Diversity
Ecology and Subsistence
Urban Popular Culture
Tradition and Trends in Textiles
South Asia on the Move

South Asia extends from the mountain ranges in the north, to the Arabian Sea in the west, and the Bay of Bengal in the east. In this region there is a vast range of natural environments inhabited by peoples with an enormous diversity of religions, cultures, and ways of life. Wisdom of coexistence developed over the centuries, and, despite rapid industrialization, is preserved to this day. This gallery exhibits a diverse array of religions, livelihoods and crafts, together with new forms of popular culture emerging primarily in urban settings, and the booming textile culture in the midst of globalization.

Central and North Asia

710m²



Living with Nature
The Socialist Era
Central Asia
Mongolia
Siberia and the Arctic

Central and North Asia is an immense region occupying the northeast of the Eurasian continent. It has long been a crossroads for interactions linking east and west, north and south, where many diverse peoples have mingled. After undergoing socialist rule during the twentieth century, the region has shifted to market economies. Caught up in the wave of globalization, traditions are being reevaluated. This exhibit has three sections on “Central Asia”, “Mongolia”, and “Siberia and the Arctic”, along with two sections accentuating the key themes of “Living with Nature” and “The Socialist Era.”

East Asia

Culture of the Korean Peninsula 330m²



Spiritual Worlds
Housing
Food
Clothing
Recreation
Knowledge

The inhabitants of the Korean peninsula developed their own distinctive culture under constant influence from other ethnic groups. Cultural elements adopted from Eastern Siberia in prehistoric times, and later from China, were reworked and domesticated to become distinctively Korean. The result is a culture with a level of integration rarely found elsewhere in the world. In modern times, Korea was colonized by Japan, then split in two after independence and rapidly modernized. In today’s world, Koreans are actively migrating to other parts of the world, and people of Korean descent can be found living outside Korea. Spiritual worlds, everyday life, recreation, and knowledge are the themes of this exhibit, which introduces the multilayered history and energetic character of this culture.

East Asia

Ainu Culture 270m²



The Ainu People
Kamuy and Nature
Present and Future

The Ainu are an indigenous people who developed a culture adapted to the cold natural environment of the northern part of the Japanese archipelago, primarily in Hokkaido. Domination by the Tokugawa Shogunate during the Edo period and assimilation during the Meiji period led to discrimination against the Ainu and imposed hardships on them. In recent years, Japan’s government has acknowledged this history and been taking steps that show respect for the Ainu people. Here we introduce the evolving situation of the Ainu, who continue to honor their traditions and strive to create a new and distinct culture.

East Asia

Regional Cultures of China 660m²



Subsistence
Musical Instruments
Zhuang Stilt House
Costume
Crafts
Taiwan Indigenous Peoples
Religion and Writing
Chinese Overseas
Transmission of Chinese Tradition

The Chinese landscape is immense and highly diverse, both in altitude and topography. Its variety of natural environments has fostered a wide range of ethnic cultures. Han Chinese account for over 90% of China’s population, and, while concentrated in the plains, are spread throughout the nation. Mainland China is also home to 55 minority peoples, who live for the most part in the highlands or grasslands in southwest, northwest, and northeast China. In Taiwan, indigenous groups speaking diverse Austronesian languages live alongside Han Chinese. Chinese overseas all over the world regard China as their ancestral homeland. This exhibition introduces a diverse range of Chinese ethnic life ways. Taking into account historical and local characteristics, the exhibition explores livelihoods, costume, musical instruments, dwellings, crafts, religion and writing, Han Chinese marriage ceremonies and ancestor worship, Taiwan indigenous peoples, and Chinese overseas.

East Asia

Culture of Japan 1,460m²



Ritual, Festivals and Performing Arts
Okinawan Lives
Multiethnic Japan
Everyday Life

Stretching from Hokkaido in the north to Okinawa in the south, the long, narrow Japanese archipelago is blessed with a rich variety of ecological niches. The combination of diverse natural environments and contacts with neighboring cultures has resulted in formation of distinct local traditions. In addition, many people from other countries have also come to live in Japan in recent years, adding new elements to the mix. In this section we approach Japanese culture from four perspectives: Festivals and Performing Arts, Everyday Life, Okinawan Lives, and Multiethnic Japan.

Cross-cultural Exhibitions

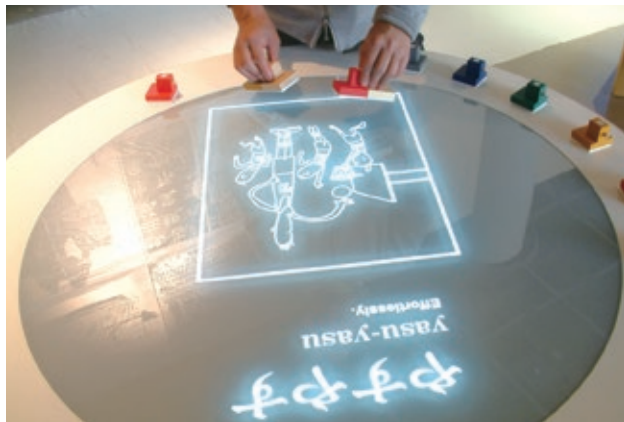
Music 550m²



Drums: A Spirited Sound Gongs: The Sound of Power
Oboe: Performing Sounds Guitar: Sounds in History

Through sounds, we humans convey messages, express emotions, know our surroundings, imagine far away times and places, inspire or console ourselves, and communicate with gods and spirits. With examples from all over the world, this exhibition shows how sounds and music are deeply related to our identity as humans.

Language 170m²



Components of Language
Language Diversity
Writing Systems of the World

Whenever people meet and interact, the need for communication arises and pieces of information are continuously exchanged through various means. Among these, language, shared exclusively by human beings, is a highly developed tool which enables us to express emotional states, describe our deepest thoughts, and to pass intellectual knowledge beyond space and over generations. Language is our irreplaceable heritage, reflecting our diverse cultures and serving as a window for understanding people's cognitive and creative abilities.

Information Zone

Introduction



The exhibits in the Introduction section are designed to enable visitors to experience directly how anthropologists and ethnologists think and how Minpaku exhibits could be explored. Here is where your global journey starts.

Videotheque/Minpaku Theater



Visitors can watch videos about ceremonies, performing arts, and lifestyles of people around the world, or about introducing the background of exhibition materials.

According to their purposes, they can select videos edited in approximately 15 minutes, multimedia programs, and valuable research videos (visual ethnography), that researchers have collected through fieldwork. In FY2022 the Minpaku Theater, was established with a large screen and monitors, to allow visitors to be immersed in the images. (There were 13,594 requests for Videotheque programs in FY2021.)

Discovery Space



Research Desk Deepen Your Knowledge
Voices from the Field Connect to the World
Touch the World Widen Your Perspectives

In the Discovery Space, visitors may search for more information about exhibits at the Research Desk. Materials related to Minpaku researchers' projects can be found at Voices from the Field. Touch the World provides an opportunity to handle as well as see exhibit materials, to gain a deeper understanding of them. Visitors are invited to learn more about the artifacts on exhibit, to satisfy their curiosity about what Minpaku researchers are studying, and to experience artifacts directly.

Special Exhibitions

Local Cultures Assisting Revitalization: 10 Years since the Great East Japan Earthquake

March 4 – May 18, 2021

* From 25th of April, the Museum was closed temporarily due to the novel coronavirus disease (COVID-19) state of emergency.

Organizers: The National Museum of Ethnology

Project leader: HIDAKA Shingo

Organizing Committee members:

- [Internal members] HAYASHI Isao, TERAMURA Hirofumi, SUEMORI Kaoru, KAWAMURA Yukako, HASHIMOTO Sachi
- [External members] KODANI Ryusuke (Tohoku History Museum), KATO Koji (Musashino Art University) KAWAMURA Kiyoshi (National Museum of Japanese History) KOIKE Jun'ichi (National Museum of Japanese History) AMANO Masashi (National Museum of Japanese History) WATANABE Koichi (National Institute of Japanese Literature) NISHIMURA Shintaro (National Institute of Japanese Literature) KIBE Nobuko (National Institute for Japanese Language and Linguistics) HAYAMA Shigeru (Hiroshima University) YOSHIDA Takehito (Research Institute for Humanity and Nature)

Cooperations: Ishinomaki City Board of Education, Bay fm78 Co., Ltd, National Institute of Japanese Literature, The Senri Foundation, Ishinomaki City, Miyagi Prefecture

PR Assistance: The Asahi Shimbun Company, The Kyoto Shimbun Co.,Ltd, The Kobe Shimbun, Sankei Shimbun Co.,Ltd, Nikkei Inc., The Mainichi Newspapers Co.,Ltd, The Yomiuri Shimbun



When the Great East Japan Earthquake occurred in 2011, local cultures significantly attracted a great deal of attraction as the motivation for revitalization. These cultures can be characterized as "the recollection of life that has been passed on in the community."

More than a decade after the earthquake, this exhibition revisits the local cultural activities that have supported the disaster recovery process. It also presents thoughts about the importance of inheriting local cultures, that serve as the foundation of an enriched society.

"UNIVERSAL MUSEUM": Exploring the New Field of Tactile Sensation

September 2 – November 30, 2021

Organizers: The National Museum of Ethnology

Project leader: HIROSE Koujiro

Organizing Committee members:

- [Internal members] HIDAKA Shingo, SONODA Naoko, SUEMORI Kaoru
- [External members] ABE Kenichi (Research Institute for Humanity and Nature) OHISHI Toru (Ashiya University), KUROSAWA Hiroshi (Nanzan University) SHINOHARA Satoshi (Tokai University) YAMAMOTO Kiyotatsu (The University of Tokyo)

Cooperations: The Senri Foundation, Research Institute for Humanity and Nature

PR Assistance: The Asahi Shimbun Company, NHK Osaka Broadcasting Station, The Kyoto Shimbun Co.,Ltd, Sankei Shimbun Co., Ltd, Nikkei Inc., The Mainichi Newspapers Co.,Ltd, The Yomiuri Shimbun

Sponsors: General Incorporated Association Lemon Shimpou, Otsuka Ohmi Ceramics Co., Ltd.

General Asahi Co., Ltd., Kinjo Rubber Co., Ltd., Human rights bureau, Koyasan Shingon-shū, Shingon-shū temple, Saiko-in

Grants: The Asahi Shimbun Foundation, Sankei Shimbun Social Welfare Association



With an extensive collection of tangible artwork using various materials and methods, this grand exhibition explores the possibilities of "touch" under the themes of "touch history," "touch scenery," and "touch sound."

A contactless society cannot foster a culture with rich textures. Universal museums are not mere resources for the disabled, or support for the weak. This special exhibition experienced a chain reaction of contact and inspiration spread by all the visitors.

Thematic Exhibition

The Vibrance of Indian Fabrics

October 28, 2021 – January 25, 2022

Organizers: The National Museum of Ethnology

Project leader: UEBA Yoko

Organizing Committee members:

- [Internal members] SUZUKI Hideaki
- [External members] SUGIMOTO Seiko (Kyoto Bunkyo University) KANETANI Miwa (Professional Institute of International Fashion) IWATANI Ayako (Kyoto University Graduate School) IGARASHI Rina (Fukuoka Asian Art Museum) TOYOYAMA Aki (Kindai University) KAWANAKA Kaoru (Professional Institute of International Fashion) FUKUUCHI Chie (Osaka University of Arts Graduate School) TAKAMICHI Yuko (Kyoto University Graduate School)

Cooperations: MINDAS (Minpaku Integrated Area Studies-South Asia), The Senri Foundation

In India, cloth separates places, connects people, serves as a medium between gods and people, influences politics, and contributes to the global economy. Clarification of the roles and functions of cloth by shedding light on the sites of development of vibrant cloth in this way, helps understand the dynamics of modern India's societal and cultural sustainability and transformation with advancing globalization. This thematic exhibition introduced people's activities that created Indian society, along with a wide array of clothes.



Traveling Exhibitions

Toys Expo—Children in Modern Japan

July 2 – August 22, 2021

Shimane Museum of Ancient Izumo

Project leader: SASAHARA Ryoji

This exhibition introduces the history of toys through widely diverse materials, from the Edo period to the Showa era. It centers on “Playthings and Relevant Materials of the Times (Tada Collection)” (an Osaka Prefecture designated tangible folk-cultural property), held in the National Museum of Ethnology, considering the relationship between society and children.



Local Cultures Assisting Revitalization:
10 Years since the Great East Japan Earthquake

August 4 – September 29, 2021

National Institute of Japanese Literature

Project leader: HIDAKA Shingo

The essence of the Museum’s special exhibition, “Local Cultures Assisting Revitalization: 10 Years since the Great East Japan Earthquake,” was primarily displayed in mobile form. It emphasized on communities striving to recover from the earthquake and nuclear disaster, and elucidating the local cultures’ roles towards that effort.



Beads from Aynu Mosir to the World

October 2 – December 5, 2021

National Ainu Museum

Project leader: IKEYA Kazunobu

The exhibition introduced various global histories and roles of beads, particularly addressing ethnographic materials of the National Museum of Ethnology and the National Ainu Museum, and archaeological materials in Hokkaido. Simultaneously, it disseminated the characteristics of the Ainu culture by comparing their beads with that of the world.



Exhibitions in 2022

Special Exhibitions

100 Years of Mongolia: Encounters through Photography

March 17 – May 31, 2022

The National Museum of Ethnology

Project leader: SHIMAMURA Ipppei

Homō loquēns ‘talking human’
Wonders of Language and Languages

September 1 – November 23, 2022

The National Museum of Ethnology

Project leader: KIKUSAWA Ritsuko

Thematic Exhibitions

Slash-and-Burn Cultivation Viewed by SASAKI Komei:
From Itsuki Mura to the World

March 10 – June 7, 2022

The National Museum of Ethnology

Project leader: IKEYA Kazunobu

Maritime People and Art of Their World: Material Culture
in Southeast Asia and Oceania

September 8 – December 13, 2022

The National Museum of Ethnology

Project leader: ONO Rintaro

Collection Exhibition

Cormorant Fishing in Contemporary China:
Techniques of Fishers

June 30 – August 2, 2022

The National Museum of Ethnology

Project leader: UDA Shuhei

Traveling Exhibitions

REGNUM IMAGINARIUM:
Realm of the Marvelous and Uncanny

April 29 – June 26, 2022

Kochi Prefectural Museum of History

Project leader: YAMANAKA Yuriko

Beads in the World

July 30 – September 11, 2022

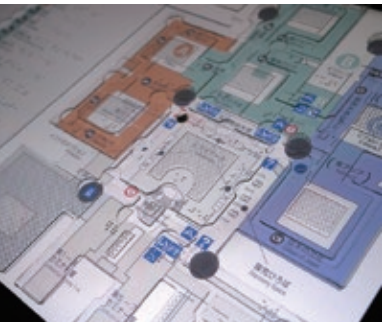
Ishikawa Nanao Art Museum

Project leader: IKEYA Kazunobu

The Digital Tactile Map [National Museum of Ethnology Touch Panel Guide]

The digital tactile map, National Museum of Ethnology Touch Panel Guide, is an interactive tactile map that makes information in the museum accessible to people, including for those with visual disability. The finger guide placed on the touch panel display and a voice guide are linked to provide tactile and audio information about the person’s location in the museum and about the exhibitions. Currently, three of these touch panel guides are placed in the exhibition halls of Minpaku.

This digital tactile map was developed in Minpaku’s Cultural Resource Projects. Members who led the design development of this project were Professor Yasuyuki Hirai of the Graduate School of Design at Kyushu University and Associate Professor Koichiro Fumoto of the Faculty of Global and Science Studies, Yamaguchi University.



The Digital Tactile Map was Awarded Various Prizes [National Museum of Ethnology Touch Panel Guide]

Data Station

Go on an exclusive virtual museum tour of past special exhibitions and permanent exhibitions captured as a panorama movie, and view a database of artifacts in the Museum’s collection.



Virtual museum

A virtual museum is available on the Minpaku website. The Main Exhibition Halls were photographed wall-to-wall using a super-wide angle camera. Each exhibition hall can be viewed from various angles on a PC or smartphone. Commentary videos are available for some exhibits. Panorama movies of exhibition records featuring special exhibitions and thematic exhibitions held by Minpaku in the past is also available for viewing.

Released in FY2021

Special Exhibition “Local Cultures Assisting Revitalization: 10 Years since the Great East Japan Earthquake”

Special Exhibition “‘UNIVERSAL MUSEUM’: Exploring the New Field of Tactile Sensation”

Thematic Exhibition “The Vibrance of Indian Fabrics”



Virtual Museum (Africa exhibition)



Virtual Museum (Thematic Exhibition “The Vibrance of Indian Fabrics”)

Awards

“Selected for the 40th Display Industry Award (2021)”

Organizer: Nippon Display Federation

Award given to: National Museum of Ethnology–

Special Exhibition “Local Cultures Assisting Revitalization: 10 Years since the Great East Japan Earthquake”

Award given to: National Museum of Ethnology, UE MARICO OFFICE, GODO Co., Ltd., Osaka Branch for Artworks, Yamato Transport Co., Ltd.

“Japan Typography Almanac 2022” Prize Winning

Organizer: Japan Typography Association

Award given to: National Museum of Ethnology–Special Exhibition “‘UNIVERSAL MUSEUM’: Exploring the New Field of Tactile Sensation”

Award given to: National Museum of Ethnology, KUWATA Chiaki (Graphic Designer)

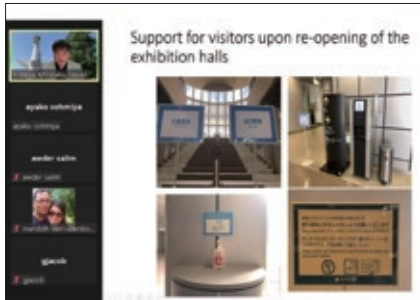
JICA Knowledge Co-Creation Program:
Implementation of “Museums and Community Development”

Training for FY2020 was postponed due to the spread of COVID-19. Instead, in FY2021, we accepted nine trainees and an observer from each of the seven countries and regions (Iraq, Egypt, Cambodia, Kiribati, Zambia, Papua New Guinea, and East Timor). Training was disseminated from November 10th to December 1st, after consulting the training commissioning body of JICA. Remote coaching was performed by combining live and on-demand sessions (self-study with materials). Lectures to elucidate the overall activities of the Museum, demonstrations of practice, presentations, and discussions were held.

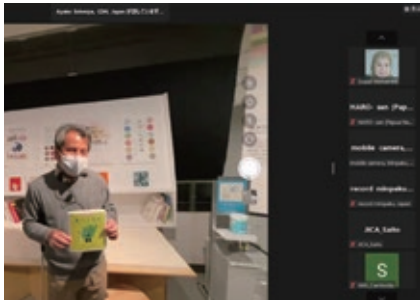
Since its inception, the program has evolved and its title and operational style has undergone several changes. However, its original aim-to promote international exchange through museums—remains unchanged. As of March 2022, 278 individuals from 61 countries and regions have participated in the program and have contributed to building a strong international network of museum specialists and curators.



Museum Report



Online Lecture



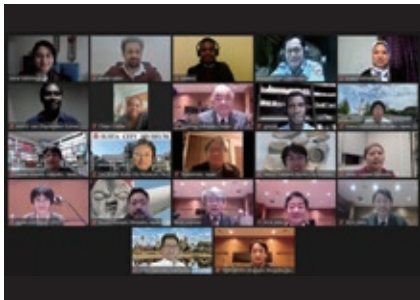
Online Tour (Special Exhibition)



Online Demonstration (Preventive conservation)



Final Report



Closing Ceremony

Minpaku Fellows

This is a network of international researchers who have worked with or for the Museum in the past, and foreign and domestic research institutions with close ties to the Museum. In order to promote awareness and improve information exchange, our English Newsletter (MINPAKU Anthropology Newsletter) is published regularly.

There are approximately 1,000 members in the Minpaku Fellows program.

Minpaku Fellows Breakdown by Area as of March 31, 2022

Regions	Number of Fellows
Asia, Middle East, Oceania	607
Europe	155
North America, Latin America and the Caribbean	196
Africa	64
Total	1,022

The Museum has been working to build networks to ensure the more systematic and viable use of cultural resources through academic collaboration with museums and universities, both in Japan and overseas. The Museum is also promoting various projects and activities that benefit local communities and international society, in cooperation with many organizations.

Min-pack

In order to contribute to a better understanding of our research, the Museum has developed a learning-kit for children, called Min-pack. It is lent to schools and other educational institutions. Min-pack is a learning kit carried in a suitcase that contains a variety of materials including clothes, musical instruments, and everyday commodities, of the world’s countries and regions, with children’s learning aids. 25 packs and 15 types are now available.

Lending period: April 9, 2021 - March 17, 2022
FY2021 Number of loans : 151 Total number of users : 20,618

- Living in the Extreme North: Anoraks and Duffle Coats from the Inuit in Canada
- Treasure Box of the Andes: The Festivals and Life of the Peruvian Southern Highlands
- Costumes in Java: Religion and Tradition
- Indian Costumes: Saris and Kurtas
- The Arabian Nights
- Islam and Life of the Arab World
- Seoul Style: A Day in the Life of Children in Seoul
- Seoul Children After-school
- Ainu Culture Encounter
- Expedition to the Steppes of Mongolia
- The 2011 Umesao Tadao Exhibition: Tools of Knowledge Production (This uses artifacts from the Special Exhibition “Umesao Tadao” held in 2011.)
- Muslims around the World: Daily Prayers
- Muslims around the World: Contemporary Life
- Ethiopian Coffee Ceremony
- Wearing Ethiopia: the Traditional Clothing of Amhara People



Min-pack
“Ainu Culture Encounter”



Min-pack
“Wearing Ethiopia: the Traditional Clothing of Amhara People”

Workshops

Workshops are organized to introduce the culture of the world through hands-on experiences (crafts) and to share research outcomes of the museum researchers with society.

Date	Workshop	Lecturer
August 7, 2021	Kids Workshop for Summer Holiday Dong, Dong, Gung, Ta, Gung! Let's play Korean rhythms with cardboard box Changu drum!	Choi Jaechol (Korean traditional drummer), KAMINO Chie
November 3, 2021	Workshop related special exhibition “Love Stone Project-UM: Smoothing the Surface”	TOMINAGA Atsuya (Sculptor), HIROSE Koujiro
November 14, 2021	Workshop related special exhibition “Touch the Sound: Playing the Earth as Musical Instruments”	WATANABE Yasuyuki (Artist), NAGATA Sachiko (Percussionist), HIROSE Koujiro
November 20, 2021	Workshop related special exhibition “Open Your Sensibilities and See the Invisible”	KATAYAMA Hiroshi (Sculptor), HIROSE Koujiro
December 26, 2021 January 8, 2022 January 9, 2022	Year-end and New Year Exhibition Event “Tiger”, “Let's find tigers at Minpaku!”	Information Planning Section



“Love Stone Project-UM: Smoothing the Surface”



“Touch the Sound: Playing the Earth as Musical Instruments”



“Open Your Sensibilities and See the Invisible”

Worksheets

We have worksheets for themed tours, special or thematic exhibitions, and self-learning depending on the visitor’s request. The related details can be found on our website. These are downloadable for free use. FY2021 saw the addition of “Let’s explore Minpaku – Islam” and its commentary, “Activity cards (eight types),” and “Activity card usage guide for school teachers”.

Minpaku at Home

A special page, “Minpaku at home,” was created on the Minpaku website on March 9, 2020, for children and others who had to stay at home because of the COVID-19 pandemic. This page features a virtual museum for viewing exhibits online and paper craft, “pop-up lion dance and lucky coloring,” worksheets, “paper beads,” various reading materials, and other items used in previous workshops. In FY2021, it added Minpaku worksheets “Touring Minpaku fascinated by cattle” and “Let’s see real things in picture books in the Museum – Mongolia.”

Conduct of *Kamuynomi*, and Craftmanship Training for the Ainu Association of Hokkaido

The Museum is carrying out two projects under an agreement with the Ainu Association of Hokkaido, a public interest incorporation. One is an implementation of the *Kamuynomi* rite. *Kamuynomi* is an Ainu word meaning ‘prayer to the deities’.

By implementing the *Kamuynomi* rite, the Museum aims to ensure proper storage of its Ainu collection and handing down of this traditional rite to future generations. In the past, this rite was performed privately by the late Mr. KAYANO Shigeru acting as the priest. Since FY2007, regional members of the Hokkaido Ainu Association (currently the Ainu Association of Hokkaido) gave public performances of traditional Ainu dance together with the *Kamuynomi* rite.

Another project is reception of traditional craft engineers dispatched by the Ainu Institute as foreign researchers which will help the Museum to further improve its academic research and collection on Ainu culture, and also promote the cultural development of Ainu people. In FY 2021, neither project was cancelled because of the novel coronavirus disease (COVID 19) pandemic.



The *Kamuynomi* Rite (FY2019)

Music Day at Minpaku

World Music Day, a festival which began in France to celebrate the summer solstice with a musical performance, was introduced in Japan in 2002. On this day, various musical events are held nationwide. Since 2003 the Museum, in support of the event, has been making space available for concerts to members of the public who enjoy music. During FY2021, a special site was launched for Minpaku’s Music Day, which publicly released a video featuring the performances posted by 20 groups.



From the posted video of “Music Day at Minpaku 2021”

Museum-School Partnership Program

To introduce tools that facilitate preparation and learning, before and after using Minpaku as a field trip or an excursion, we provide “Prior Visit Guidance” twice a year in spring and autumn in the Museum, promoting the use of museums in lessons. The program was canceled to prevent the spread of COVID-19 in FY2021. Nevertheless, we distributed a video’s brochures to schools and academically involved individuals. The video on “National Museum of Ethnology: A Guide for School Groups” was released on the Museum’s website and official YouTube channel, along with worksheets that are useful during exhibition visits.

Online Interactions On “Museums and Children”

The National Museum of Ethnology established the Working Group to strengthen Museum–Society Cooperation projects. In FY2021, we held an online interaction titled “Museums and Children,” on the theme that promotes children’s education at museums, for people involved in museums, art museums, and other cultural facilities in Japan (the first on October 25 and the second on November 22. Website viewers totaled 143 accounts). We reported our museum’s accomplishments on Museum–Society Cooperation projects and exchanged information and opinions there. Additionally, we published a booklet summarizing “Museums and Children.”

Volunteer Activities

Minpaku Museum Partners (MMP) is a group of volunteers established in September 2004, to assist the Museum in the planning and implementation of its activities.

MMP is promoting a widely various range of activities in cooperation with the Museum, such as “Main Exhibition Hall Guidance for Visually-Impaired Persons” (a program to support them to experience the exhibitions in the hall), “Wakuwaku Taiken at Minpaku” (a hands-on tour mainly for elementary school children), and craft workshops for general visitors. MMP also actively involves itself in workshop festivals and volunteer exchange programs outside the museum to deepen the relationship with other museums and facilities. In FY 2021, some programs and activities were cancelled because of the novel coronavirus disease (COVID 19) pandemic.



Main Exhibition Hall Guidance for Visually-Impaired Persons (FY2019)



Wakuwaku Taiken at Minpaku (FY2019)



Experiencing Braille at the Workshop (FY2020)

Minpaku Seminars

On the third Saturday of every month, the Museum’s academic staff and others give lectures in plain language to the general public on the newest research findings.

FY2021 Total Attendance: 373 Online: Maximum number of simultaneous connections: 1,479

□ indicates seminars associated with special exhibitions ○ indicates seminars associated with thematic exhibitions

No.	Date	Lecturer	Title
□ 508	April 17, 2021	HOSHI Hirokazu (Futaba Town Board of Education General Affairs Division), HIDAKA Shingo	Getting a Job in Futaba-town: From the Curator's Point of Views
□ 509	May 15, 2021	KODANI Ryusuke (Supervising Manager, Cultural Heritage Disaster Risk Management Center, Japan), HIDAKA Shingo	The Power of Local Performance
510	June 19, 2021	SHIMAMURA Ippei	Hip Hop Mongolia, or Rhyming the Contemporary Mongol Society
511	July 17, 2021	OKADA Emi	Naga Polyphonic Singing in Northeast India: Why People Sing Together?
512	August 21, 2021	SUEMORI Kaoru	Sacred Space Created by Polychrome Patterns- Thousand Buddha Mural Paintings of Mogao Grottoes, Dunhuang.
□ 513	September 18, 2021	HIROSE Koujirou	WHAT IS THE MEANING OF “NORMAL”? —The Story of “Biwa-nashi Hoichi”
□ 514	October 16, 2021	OISHI Toru (Ashiya University), KUROSAWA Hiroshi (Nanzan University), SHINOHARA Satoshi (Tokai University), HIROSE Koujirou	Various Definitions of “Universal Museum”: Regain Our Wild Nature in the Dark
515	November 20, 2021	CHE Sohee	Changes in 21 Days after Childbirth - From Korean Traditional Customs to Postpartum Care Facilities
516	December 18, 2021	HIRANO Chikako	How Aboriginal Arts are Painted?
517	January 15, 2022	HAYASHI Isao	Transferring Large-Scale Disaster Experiences: The Role of Remains, Monuments, Storytellers and Museums
518	February 19, 2022	SEKI Yuji	Looking up to the Faraway Mountains: 40 Years of Exploring Andean Civilization
○ 519	March 19, 2022	SATO Renya (Osaka University), KOMEIE Taisaku (Kyoto University), IKEYA Kazunobu	Does Slash-and-burn Cultivation Destroy the Environment?-Research by SASAKI Komei and After



No.509 “The Power of Local Performance”



No.511 “Naga Poliphonic Singing in Northeast India:
Why People Sing together?”



No.518 “Looking up to the Far Way Mountains:
40 Years of Exploring Andean Civilization”

Minpaku Weekend Salon: A Chat with a Researcher

To better understand our research, this event provides an opportunity for the public to talk directly with research institute staff in the Museum’s exhibition hall. The Minpaku Weekend Salon was launched in FY2007, as part of the Museum’s 30th Anniversary project. In FY2021, the event was held in a seminar room in the Museum, to prevent the spread of COVID-19. Similar to the previous year, 17 salons were held on Sundays, attracting 461 participants.

Special Lectures and Performances

FY2021 Total Attendance: 217 Online: Maximum number of simultaneous connections: 263

Performing arts of the world’s peoples are staged, with the aim of deepening understanding of cultural anthropology and ethnology among the public.

Jangara Nenbutsu [a Buddhist chant]
Dance at Minpaku

Date	May 8, 2021
Lecturer	HIDAKA Shingo
Commentator	ENDO Satoshi
Performers	(Inheritance Group of Hisanohama Oohisa jangara) Inheritance Group of Hisanohama Oohisa jangara

Online: Maximum number of simultaneous connections: 100



Jangara Nenbutsu [a Buddhist chant]
Dance at Minpaku

Listen to the Earth: Touch, Strike,
Swing and Grow

Date	November 13, 2021
Lecturer	HIROSE Koujirou
Performers	NAGATA Sachiko (Percussionist) WATANABE Yasuyuki (Artist)
Attendance	125

Online: Maximum number of simultaneous connections: 98



Listen to the Earth: Touch, Strike, Swing
and Grow

Connecting People through
Taiko Drumming

Date	March 20, 2022
Lecturer	FUKUOKA Shota, TERADA Yoshitaka
Performers	Japanese drums unit KIZUNA
Attendance	92

Online: Maximum number of simultaneous connections: 65



Connecting People through Taiko
Drumming

Minpaku Film Shows

Valuable films on cultural anthropology and ethnology, hardly available in public, are shown with commentary by researcher.

FY2021 Total Attendance: 515 Online: Maximum number of simultaneous connections: 1,033

Date	Lecturer	Title	Attendance	Online: Maximum number of simultaneous connections
April 10, 2021	HIDAKA Shingo AGATSUMA Kazuki (Film Director)	Tremorings of Hope	50	57
April 24, 2021	HIDAKA Shingo KAWAMURA Kiyoshi (National Museum of Japanese History Associate Professor)	Challengers of Passing on Sanno Festival: Current Report on Minazuki in Wajima City	44	63
November 7, 2021	HIROSE Koujirou SAITO Hiromi (Goze Museum Takada Adviser)	GOZES HAVE DISAPPEARED COMPLETELY: The Reality of Blind Female Musicians through Documentary Films	26	
November 23, 2021	HIROSE Koujirou SAITO Hiromi (Goze Museum Takada Adviser)	Bring Back Touch! Blind People Know the Unseen World		175
March 21, 2022	Benj BINKS (Movie Director), Gennie (Rapper) HUNGER (Rapper), KAWASE Itsushi, SHIMAMURA Ipppei	Contemporary Mongolia and Hip Hop : Learning by the Documentary film “Mongolian Bling”	113	185
March 26, 2022	SAITO Reiko MIZOGUCHI Naomi(Filmmaker)	Ainu: Indigenous People of Japan	73	162

Minpaku Visual Ethnography Theater

Date	Lecturer	Title	Attendance	Online: Maximum number of simultaneous connections
January 22,2022	OMORI Yasuhiro, MINAMI Makito	Earth, Fire and Water: A Balinese Funeral	16	99
January 29,2022	KAWASE Itsushi, MINAMI Makito	Ashenda!: The Festival for Young Women in Local Societies in Northern Ethiopia	14	90
February 6,2022	HATA Nobuyuki, IIDA Taku, MINAMI Makito	Chief's Dance of Masquerade Chiefdom Mankon in Cameroon Highland	22	73
February 23,2022	UEBA Yoko, KANETANI Miwa (Professional Institute of International Fashion associate professor), MINAMI Makito	Khatri Dyers of India: Tie-dyeing and Batik of the Kutch District	26	129

Minpaku World Cinema

By selecting appropriate movies for theme “Thought on The Future of Humanity from Films”, the Museum offers a series of film showings accompanied by researcher commentary.

No.	Date	Lecturer	Title	Attendance
50	February 12,2022	SUGASE Akiko	Tel Aviv on Fire	131

Campus Members

This membership program is aimed at providing opportunities to learn about cultural anthropology and ethnology through cooperation between the National Museum of Ethnology and educational institutions such as universities.

Member schools receive privileges such as participation in events, including exhibition tours, special lectures and performances, and movies free of charge and discounts at the Museum Shop.

Member schools in 2021

Osaka University, Kyoto University, The Ristumeikan Trust, Tsukamoto Gakuin, Doshisa University (Faculty of Global and Regional Studies, Department of Culture and Information Science, Faculty of Culture and Information Science), Senri Kinran University

Related Activities

In FY2021, the event “Minpaku × Yamada Branch library: Let’s see the real things in picture books in the Museum – Mongolia” (October 1–31) was conducted as a cooperation project with Suita City Yamada Branch library. During this period, we had “Minpaku Story Time: Let’s see the real things in picture books in the Museum – Mongolia” as an in-house workshop and a lecture for children, “Live in the Prairie! Nomadic Children,” in the Yamada Branch library.

In September 2021, Minpaku Fair was held at Suita City Information Plaza (Inforest Suita), to promote Minpaku’s activities (11,576 visitors counted).



Data Collection

History

1935	A plan to establish an ethnological museum of Japan as an incorporated foundation is developed under the leadership of SHIBUSAWA Keizo and SHIRATORI Kurakichi.
1964	The Japanese Society of Ethnology, the Anthropological Society of Nippon, the Japanese Archaeological Association, the Folklore Society of Japan, and the Japanese Association of Ethnology jointly submit to the Minister of Education and other relevant authorities a request to establish a national ethnological research museum.
1972	A research council (chaired by KUWAHARA Takeo) conducts a feasibility study on the establishment of a National Ethnological Research Museum. A basic concept plan for the museum is submitted to the Minister of Education.
1973	A preparatory council for the establishment of a National Ethnological Research Museum (tentative name) and a preparation office are set up.
1974	The National Museum of Ethnology is founded under the “Law to amend part of the National School Establishment Law” (No. 81, 1974), with an Administration Department, an Information and Documentation Center, and five Research Departments. Collecting artifacts from overseas was started in Papua New Guinea.
1975	A collection of folklore reference materials (28,432 items) owned by the former Ministry of Education Archive were transferred from the National Institute of Japanese Literature.
1977	The Museum buildings (28,778m ²) are completed and the surrounding area is landscaped. An opening ceremony is held. Exhibitions on Oceania, the Americas, Europe, Africa, West Asia, Music, Language, Southeast Asia, and East Asia (Japanese Culture), as well as the Videotheque are opened to the public.
1978	Long-term and carefully organized “Special Projects” are started as key components of ethnological research.
1979	The fourth Exhibition Hall (1,272m ²), which accommodates an additional exhibition on East Asia (Japanese Culture), is completed and opened to the public. Exhibitions on Central and North Asia, and East Asia (Ainu Culture) are opened to the public.
1981	The Auditorium (3,704m ²) is completed.
1983	The eighth Exhibition Hall and other facilities (4,816m ²) are completed. The exhibition on East Asia (Cultures of the Korean Peninsula and Regional Cultures of China) is opened to the public.
1984	The 10th anniversary of the Museum’s founding is celebrated. “A Ten-Year History of the National Museum of Ethnology” is published.
1987	The 10th anniversary of the Museum’s opening to the public is celebrated.
1989	The School of Cultural and Social Studies (with the Department of Regional Studies and the Department of Comparative Studies) of the Graduate University for Advanced Studies is established within the Museum. The Special Exhibition Hall and the library stacks (5,292m ²) are completed. The first special exhibition, “The Great Andes Civilization: Inca, the Reviving Empire of the Sun” is organized to celebrate the completion of the Special Exhibition Hall.
1993	The main Museum building is expanded and a joint research facility (891m ²) is completed.
1994	The 20th anniversary of the Museum’s founding is celebrated. The Japan Center for Area Studies is established. (Discontinued in FY2005)
1995	Owing to damage caused by the Hanshin-Awaji Great Earthquake, the entire collection is closed for 45 days. (Earthquake-proof reinforced construction was retrofitted between 2002 and 2003) The Center of Excellence (COE) program is established: “Pioneering Research for the Development of New Ethnological Studies Using Multimedia in the Global Era.” (Concluded at the end of FY1999)
1996	The seventh Exhibition Hall (6,439m ²) is completed. Exhibitions on Language and Southeast Asia are renovated. An audio-visual gallery, the Materiatheque, and the exhibition on South Asia are opened to the public.
1997	The 20th anniversary of the Museum’s opening to the public is celebrated.
1998	Following the enactment of the Ministerial Ordinance to revise part of the administrative rules for the Inter-University Research Institute (Ordinance of the Ministry of Education No. 24 of 1998), the five research departments are reorganized into four research departments and one research facility.
1999	The Minpaku “Digital Guide and Study Area” are completed and opened to the public.
2000	A renovated exhibition on the Cultures of the Korean Peninsula is opened. Partial renovation of the Museum exhibitions continued until 2003.
2004	As authorized by the National University Corporation Act (Act No.112,2003), the National Institutes for the Humanities, as part of the Inter-University Research Institute, is established. The former system of 4 research departments and 1 research center is reorganized into a system with 3 research departments and 2 centers. To facilitate joint research, screening by the Joint Research Committee, whose members include representatives from the research community, is established and the scope of the call for joint research applications expanded. Editing of a book entitled A Thirty-Year History of the National Museum of Ethnology is one of the earliest commemorative events started in preparation for the 30th anniversary of the Museum’s founding. (The book is published in March 2006.)
2006	The Minpaku Collections Help Desk opens.
2007	The 30th anniversary of the Museum’s opening to the public is celebrated.
2008	A collaborative agreement is signed with the Japanese Society of Cultural Anthropology.
2009	After renovation, the Africa and West Asia galleries are re-opened to the public.
2010	After renovation, the Music and Language galleries are re-opened to the public. New systems are consolidated including the establishment of the Center for International Academic Exchange.
2011	After renovation, the Oceania and Americas galleries are re-opened to the public.
2012	After renovation, the Europe gallery and Information Zone are re-opened to the public.
2013	After renovation, the East Asia–Culture of Japan gallery is re-opened to the public. Consolidation of new systems, including the Audit Office and Umesao Archives.
2014	After renovation, the East Asia–Culture of the Korean Peninsula, Regional Cultures of China, and Culture of Japan galleries are re-opened to the public.
2015	After renovation, the South Asia and the Southeast Asia galleries are re-opens to the public.
2016	After renovation, the Central and North Asia, and the East Asia–Ainu Culture galleries are re-opened to the public.
2017	Renovation of the Main Exhibitions was completed,anniversary ceremony is celebrated. The former system of 3 research departments and 2 research centers is reorganized into a system with 4 research departments and 1 research center. The 40th anniversary of the Museum’s opening to the public is celebrated. Joint-Use Facilities for Scientific Research is established.
2018	The exhibition hall was closed for 66 days because of damage caused by the Osaka northern district earthquake. The library was closed for 49 days.
2020	The National Museum of Ethnology was closed for 111 days because of the novel coronavirus disease (COVID-19) pandemic.
2021	The National Museum of Ethnology was closed for 59 days because of the novel coronavirus disease (COVID-19) pandemic.

Former Directors-Generalas of April 1, 2022

First Director-General June 1974–March 1993 UMESAO Tadao* <i>Ethnology, Comparative Study of Civilizations</i>	Second Director-General April 1993–March 1997 SASAKI Komei* <i>History of Agriculture in East and South Asia</i>	Third Director-General April 1997–March 2003 ISHIGE Naomichi <i>Cultural Anthropology</i>	Fourth Director-General April 2003–March 2009 MATSUZONO Makio <i>Social Anthropology</i>	Fifth Director-General April 2009–March 2017 SUDO Ken’ichi <i>Social Anthropology</i>
---	---	--	---	--

Professors Emeriti as of August 1, 2022

1984– SOFUE Takao* <i>Psychological Anthropology</i>	1997– SASAKI Komei* <i>History of Agriculture in East and South Asia</i>	2005– EGUCHI, Paul K.* <i>Oral Literature and Naterial Culture of the Fulfulde-speaking People, Cameroon</i>	2015– KUBO Masatoshi <i>Ethno-Informatics, Computer Ethnology, Study on Aboriginal Australian Culture</i>
1985– IWATA Keiji* <i>Cultural Anthropology</i>	1997– SUGIMURA Toh* <i>Study of Ethno-arts</i>	2005– MATSUBARA Masatake <i>Social Structure, Turkey, Eastern Asia, Central Asia</i>	2015– SHOJI Hiroshi <i>Finno-Ugric Linguistics, Ethnolinguistics, Language Policy; Northern Europe, China</i>
1986– KATO Kyuzo* <i>Ethnic History in North and Central Asia</i>	1998– WADA Shohei <i>Comparative Study of Cultures, Anthropology of Africa</i>	2005– OHTSUKA Kazuyoshi <i>Aynu (Ainu) Culture, Material Culture of North Asian Food Gatherers, Paleoeecology, Prehistoric Subsistence, Japan</i>	2015– YASUGI Yoshiho <i>Linguistic Anthropology, Writing Systems, Mayan Civilization, Mesoamerica</i>
1988– ITOH Mikiharu* <i>Anthropology of Religion</i>	2000– SHIMIZU Akitoshi <i>Comparative Study of Families, Study of Oceania</i>	2006– ISHIMORI Shuzo <i>Cultural Development Studies, Anthropology of Tourism, Museum anthropology, Cultural Resource Management; Micronesia, Polynesia, Southeast Asia, Japan</i>	2016– ASAKURA Toshio <i>Social Structures in East Asia; Korea, Japan</i>
1988– NAKAMURA Shunkichi* <i>Study of Ethnic Technologies and Tools</i>	2001– HATA Nobuyuki <i>Economic Anthropology, Anthropology of Africa</i>	2006– NOMURA Masaichi* <i>Nonverbal Communication, Ethnology of Mediterranean Europe</i>	2016– SASAKI Shiro <i>Socioeconomic History of Reindeer-Breeders and Forest Hunters; Northern Asia, Siberia</i>
1989– KIMISHIMA Hisako <i>Chinese Folklore</i>	2001– KURODA Etsuko <i>Theory of Ethnicity and Social Culture, Anthropology of Central America</i>	2007– OMORI Yasuhiro <i>Ethnology, Visual Anthropology</i>	2016– SUGIMOTO Yoshio <i>Social Anthropology; Sri Lanka, South India</i>
1990– WADA Yuiti* <i>Linguistic Anthropology</i>	2001– SAKIYAMA Osamu <i>Linguistic Anthropology, Oceanic Linguistics</i>	2007– YAMAMOTO Norio <i>Ethnobotany, Ethnology, the Andes, the Himalayas</i>	2017– SUDO Ken’ichi <i>Social Anthropology</i>
1991– TARUMI Minoru* <i>Anthropology in Spatial Domains</i>	2002– KOYAMA Shuzo <i>Ethnoarchaeology</i>	2009– MATSUZONO Makio <i>Social Anthropology</i>	2017– TAKEZAWA Shoichiro <i>African History, History of Anthropological Thought; West Africa</i>
1992– SUGIMOTO Hisatsugu* <i>Cultural Geography, Cultural Anthropology</i>	2002– MORITA Tsuneyuki <i>Conservation Science, Ethno-technology</i>	2010– MATSUYAMA Toshio <i>Ethnology of Contemporary Australian Aboriginal Society</i>	2017– TSUKADA Shigeyuki <i>Ethnohistory; Southern China</i>
1993– KATAKURA Motoko* <i>Social Geography, Ethnology</i>	2003– ISHIGE Naomichi <i>Cultural Anthropology</i>	2011– NAGANO Yasuhiko <i>Historical Linguistics, Lexical Semantics; Tibeto-Burman Area</i>	2018– INTOH Michiko <i>Prehistory of Oceania; Oceania, Island Southeast Asia</i>
1993– OGYU Chikasato* <i>Cultural Structure of Latin America</i>	2003– KURITA Yasuyuki <i>Museum Anthropology, Study of Bhutan</i>	2012– AKIMICHI Tomoya <i>Maritime Anthropology, Ecological Anthropology; Oceania,Southeast Asia, Japan</i>	2018– YOKOYAMA Hiroko <i>Cultural Anthropology, Chinese Society and Culture</i>
1993– UMESAO Tadao* <i>Ethnology, Comparative Study of Civilizations</i>	2003– SUGITA Shigeharu <i>Computer Ethnology, Study of Civilization</i>	2012– NAKAMAKI Hirochika <i>Japanese Religion, Brazilian Company Culture; Japan</i>	2020– TERADA Yoshitaka <i>Ethnomusicology, Study of South India</i>
1994– TAKEMURA Takuji* <i>Social Anthropology</i>	2004– FUJII Tatsuhiko <i>Prehistory of the New World Continent</i>	2014– KOBAYASHI Shigeki <i>Museum Science, Cultural Anthropology</i>	2021– DEGUCHI Masayuki <i>Third Sector Research, Civil Society Studies</i>
1995– CHOU Ta-sheng* <i>Theory of Material Culture</i>	2004– KUMAKURA Isao <i>History of Japanese Culture</i>	2014– TAMURA Katsumi <i>Cultural Anthropology; Southeast Asia, East Asia</i>	2022– HAYASHI Isao <i>Social Structure, Cosmology, Risk and Disaster; Melanesia, Polynesia, Japan</i>
1995– MATSUZAWA Kazuko <i>Social Anthropology</i>	2004– TANABE Shigeharu <i>Social Anthropology of Southeast Asia</i>	2014– YOSHIMOTO Shinobu <i>Textile Arts and Technology; Asia, Africa, America, Europe</i>	2022– SEKI Yuji <i>South American Archaeology, Cultural Anthropology</i>
1996– DAIMARU Hiroshi* <i>Comparative Study of the History of Lifestyles, Based on Clothing, etc.</i>	2004– TACHIKAWA Musashi <i>Philosophy of Religion, Buddhist Thought</i>		
1996– FUJII Tomoaki <i>Ethnomusicology, Anthropology of Music</i>	2004– YAMADA Mutsuo* <i>History of Latin America, Area Study of Latin America</i>		
1996– TOMOEDA Hiroyasu* <i>Social Anthropology</i>			

* Deceased

Note: Visiting Research Fellows and Overseas Visiting Fellows are not included in the numbers given for "Staff" members.

Category	Director-General	Prof.	Assoc. Prof.	Assist. Prof.	Project Prof.	Project Assoc. Prof.	Project Assist. Prof.	Subtotal	Administrative & Technical Staff	Total
Staff	1	25	24	4	0	0	1	55	50	105
Visiting Research Fellows		12	7					19		19
Overseas Visiting Fellows										0
Director-General	1							1		1
Audit Office									1(2)	1(2)
Office of Administration									28	28
Office of Information and Documentation		(1)							21(1)	21(2)
Research Departments		20	19	4	0	0	1	44		44
Center for Cultural Resource Studies		5	5	0				10		10

Parenthesis () shows the number of staff members holding two posts. The figure for administrative staff includes one project specialist.

Budget

FY2021

Revenue

Category	(Millions of yen)
Management Expenses Grants	2,874
Foundation	2,717
Others	157
Revenue	32
Admission fee	21
Others	11
Facilities	82
Grants-in-Aid for Scientific Research	269
Total	3,257

Expense

Category	(Millions of yen)
Salaries	1,132
Others	1,856
Education and research	439
Joint use	838
General management costs	497
Facilities	82
Grants-in-Aid for Scientific Research	269
Total	3,257

Note: These figures are from the revised budget include the carry-over from the previous fical year and exclude the carry-over to the next fiscal year.

FY2022

Category	(Millions of yen)
Management Expenses Grants	2,828
Foundation	2,669
Others	159
Revenue	44
Admission fee	31
Others	13
Facilities	152
Grants-in-Aid for Scientific Research	300
Total	3,324

Category	(Millions of yen)
Salaries	1,169
Others	1,855
Education and research	467
Joint use	690
General management costs	546
Facilities	152
Grants-in-Aid for Scientific Research	300
Total	3,324

Note: These figures are from the annual budget include the carry-over from the previous fiscal year

Facilities

The Basic Concept of the Museum Design

The Museum consists of low-rise buildings which naturally blend with the surrounding park environment. In designing the buildings, special emphasis was placed on the aesthetics of traditional Japanese architecture. Each floor of the Museum's main building is composed of several blocks. While the outer walls of these blocks have no openings for natural lighting, plenty of light is let in through the inner courtyards (patios). The patios provide a sense of openness and connection with the outer world, and are also used as open-air exhibition space.

Each floor is designed to be dedicated to a specific purpose, namely, storage on the first floor, exhibitions on the second, and research on the third and fourth. Elevators and staircases provide direct access to these floors. As the route is laid out in a manner that allows for a circular trip, visitors can either go through all the exhibitions, or choose to visit certain exhibitions of interest.

In addition, in order to make the Museum barrier-free and universally accessible, changes such as the installation of Braille labels are ongoing.

Total area of grounds: 40,821 m²
Ground area occupied by the museum buildings: 18,177 m²
Total floor space: 52,648 m²

Fourth Floor 7,207 m²
Offices of research staff members, laboratories, library stacks, and storage area.

Second Floor 16,830 m²
Exhibition halls, patio, central patio, multifunctional terminal room, administration offices, Special Exhibition hall and auditorium (seating capacity for 462 persons).

Main Exhibition Halls 10,938 m²

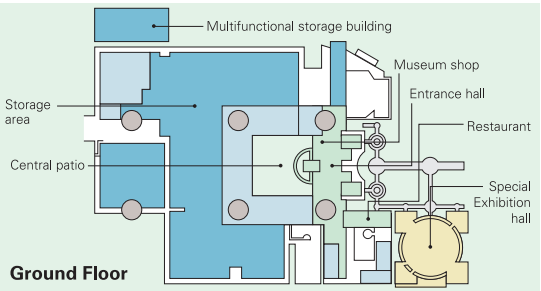
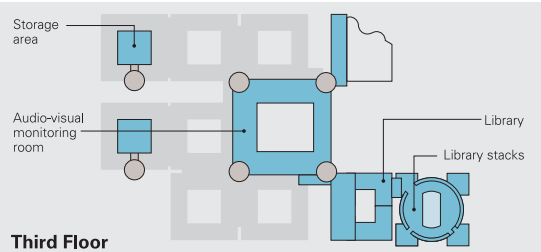
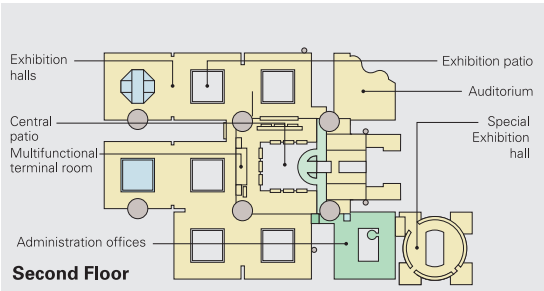
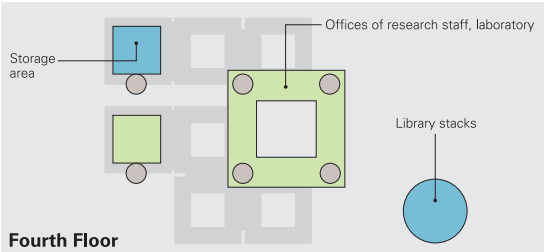
Third Floor 7,340 m²
The library, library stacks, audio-visual monitoring room and storage areas.

Ground Floor 17,410 m²
Entrance hall, central patio, restaurant, Special Exhibition hall, storage area and museum shop.

Rooftop 846 m²

Basement 3,015 m²

Special Exhibition Halls **Ground Floor** 851 m²
Second Floor 639 m²



Cooperative Agreements

Promotion of Research Coordination and Collaboration with Overseas Research Institutes

Minpaku has established academic agreements with overseas research institutions for research cooperation and collaboration. In FY 2021, the agreements were renewed with Shung Ye Museum of Formosan Aborigines (Taiwan) in April, The Institute of Ethnology and Anthropology, Chinese Academy of Social Sciences (China) in August, National Museum of Taiwan History (Taiwan) in October, and University of British Columbia, Museum of Anthropology (Canada) in March 2022.

Name of the Institutes	Date of Agreement	Outline of Agreement
The Faculty of Forestry, Kasetsart University (Thailand)	November 22, 2019	Academic research and exchange in joint research, training, publishing, and exhibition projects.
National Museums of Kenya (Kenya)	November 7, 2019	Conducting collaborative research projects including those on museum objects possessed by the Parties; Organizing lectures, symposia and joint exhibitions; Exchange of research information and materials; Promoting cultural and museological exchange programs; and Cooperation in exchange of research staff.
Bangladesh Agricultural University (Bangladesh)	November 3, 2019	Academic research and exchange in joint research, training, publishing, and exhibition projects.
Institute of Archaeological Studies named after Yahyo Gulomov, Academy of Sciences of the Republic of Uzbekistan (Uzbekistan)	September 19, 2019	Cooperation in a variety of research and academic projects; collaborative research in archeology, anthropology, geography, conservation science and other related fields; exchange of visiting scholars, curators and/or other research staff, etc.
The National Research Centre of Archaeology (Indonesia)	June 10, 2019	International joint archaeological research in Indonesia, to reporting programme effectiveness, activities, and research results, etc.
National Museums Board (Zambia)	August 12, 2018	International joint research, exchange of researchers, exchange of museum-related materials and information, etc.
National Museum of Iran (Iran)	November 8, 2017	International joint research, exchange of researchers, exchange of museum-related materials and information, etc.
University of British Columbia, Museum of Anthropology (Canada)	March 9, 2017	Academic cooperation and exchange on research projects, exhibitions, database development, etc.
Institute of Anthropology and the Library, Zhejiang University (China)	April 19, 2016	Contribution of references, exchange of human resources, joint research.
Vanderbilt University (USA)	January 15, 2016	Strengthening global collaborative research and organizing international symposia.
National Museum of Taiwan History (Taiwan)	October 16, 2015	Collaborative research and cooperation on exhibition development.
The Museum of Northern Arizona (USA)	July 4, 2014	Strengthening academic exchange and collaborative research.
The Institute of Ethnology and Anthropology, Chinese Academy of Social Sciences (China)	August 28, 2012	Along with other scholarly exchanges, Minpaku participates in research projects and the exchange or shared use of research materials, academic data and publications.
The National Museum of the Philippines (Philippines)	July 18, 2012	International joint research, exchange of researchers, exchange through projects that include joint research training, publication and exhibits.
A:shiwi A:wam Museum and Heritage Center (USA)	June 3, 2012	Scholarly cooperation, development of joint research projects, and exhibits or educational use of museum materials.
Institute of Ecology and Biological Resources (Viet Nam)	March 22, 2012	International joint research, exchange of researchers, exchange through projects that include joint research training, publication and exhibits.
Peter the Great Museum of Anthropology and Ethnology of the Russian Academy of Sciences (Kunstkamera) (Russia)	October 21, 2011	Promotion of interaction and cooperative relationships between the academic and cultural spheres.
The University of Edinburgh (U.K.)	May 17, 2010	Promotion of academic exchanges and joint research.
Taipei National University of the Arts (Taiwan)	May 15, 2009	Academic exchange, development of research projects, cooperation on museum exhibitions and educational initiatives, exchange of academic information and publications.
Inner Mongolia University (China)	September 22, 2008	Exchange between teaching faculty and researchers, development of research projects, cooperation on museum exhibitions and education, exchange of academic documents and publications.
The National Folk Museum of Korea (Korea)	July 11, 2007	Exchange between teaching faculty and researchers, development of research projects, cooperation on museum exhibitions and education, exchange of academic documents and publications.
Shung Ye Museum of Formosan Aborigines (Taiwan)	July 1, 2006	Collaborative research and cooperation on exhibition development.
The National University of San Marcos (Peru)	June 14, 2005	Joint research projects and academic exchanges in archaeology.

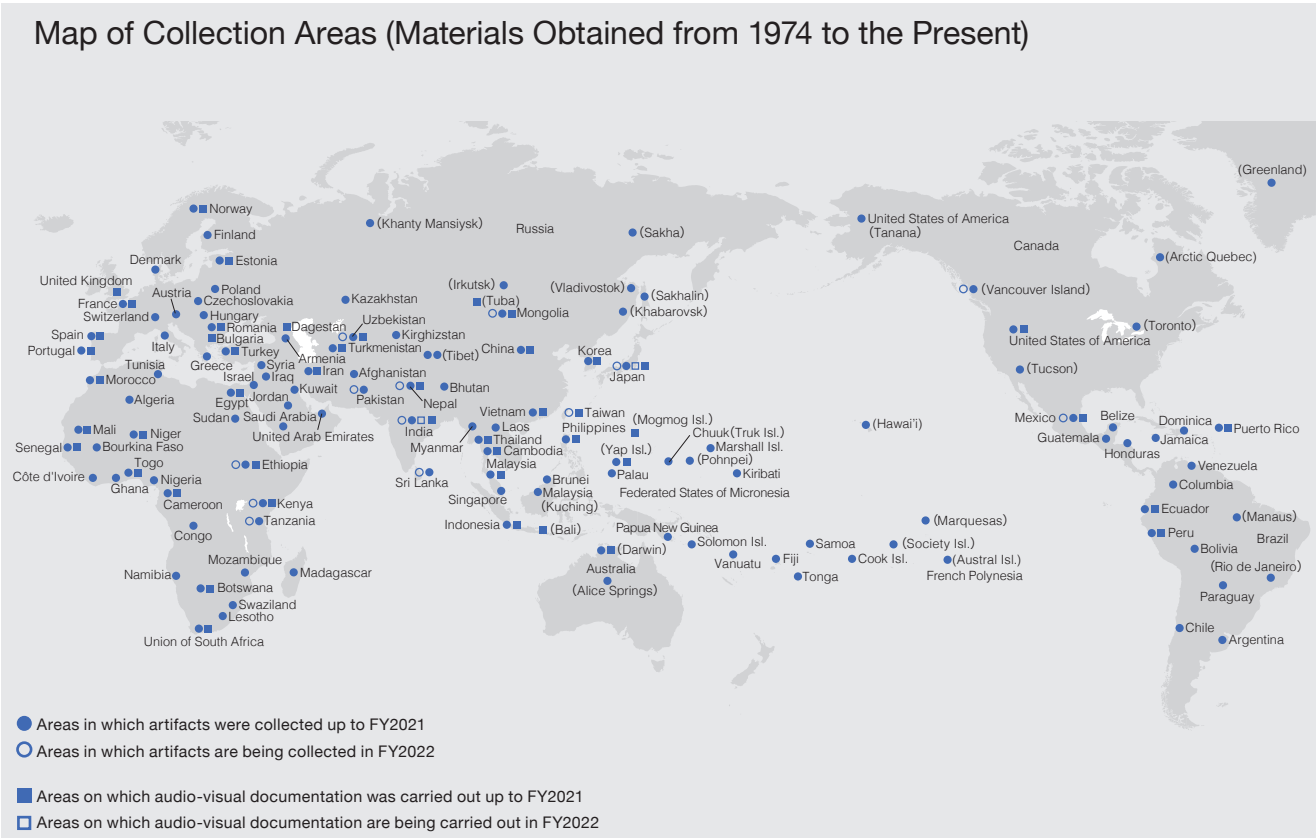
Promotion of Collaboration and Cooperation with Research Organizations in Japan

To promote collaboration, cooperation and joint research with universities, research organizations and academic associations in Japan, agreements are concluded following consideration. In March of FY2021, we concluded an agreement again with the Graduate School of Humanities, Kobe University, to renew it.

Name of the Institutes	Date of Agreement	Summary of the Agreement
Kanazawa College of Art	March 22, 2021	Based on the Heisei Hyakukouhishou collection database, the status and use of databases in higher education are verified. Educational materials for higher education were put to practical use by linking them to social businesses
Institute for the Study of Japanese Folk Culture, Kanagawa University	March 26, 2020	Contribution to academic research, education, and social development
The Society for Research in Asiatic Music	November 3, 2019	Contribution to the sustainable development of music culture and the elaboration of research on music culture
The Japan Society for the Conservation of Cultural Property	November 26, 2018	Contribution to academic research, education, and social development
Kyoto University of the Arts	March 19, 2018	Contribution to academic research, education, and social development
Osaka University	March 17, 2018	Contribution to academic research, education, social contribution, and development of other activities
Yamagata University	February 16, 2018	Contribution to academic research, education, and social development
Graduate School of Humanities, Kobe University	July 15, 2016	Academic exchange on research education
Research Institute for Languages and Cultures of Asia and Africa, Tokyo University of Foreign Studies	November 25, 2015	Academic research, collaboration, and cooperation related to language and culture around the world
The Osaka Aquarium Kaiyukan	November 19, 2015	Contribution to society, collaboration, and cooperation through promotion of cooperation between businesses and universities, and advancement of academic research and research outcomes
Osaka Institute of Technology	March 23, 2015	Academic research and collaborative cooperation related to information media digital contents
Kanazawa University	March 23, 2014	Organizational system strengthening based on collaboration and cooperation of both institutions
Japanese Society of Cultural Anthropology	February 27, 2008	Promotion of utilization of research collaboration, research exchange, and mutual research outcomes. Contribution to the development and spread of academic matters in human society

Materials and Databases

The Museum has collected and stored a vast amount of materials and information concerning ethnology and anthropology for researchers inside and outside the country, and has made them available to society through exhibitions and other activities. To carry out these activities efficiently, the Museum has been trying to develop better ways to collect and manage materials, organize and provide information, create database systems and contents, hold exhibitions, and implement various other activities.



The Museum Collection of Artifacts and Other Materials as of March 31, 2022

Artifacts (registered and unregistered)	345,278	Books and Periodicals	
From abroad	179,398	Books (Including bound magazines)	690,193
From Japan	165,880	Japanese materials	272,631
		Foreign language materials	417,562
Audio-Visual Materials	72,698	Journals	17,280
Visual Materials	8,277	Japanese periodicals	10,189
Audio Materials	64,421	Periodicals in other languages	7,091
Human Relations Area Files (HRAF)			
Area files (ethnic groups)		465 files	
Original texts		9,115 volumes	
※ as of April, 2022			
eHRAF World Cultures			
Area files (ethnic groups): 359 Original texts: 6,632			
eHRAF Archaeology (Archaeological document-oriented database of prehistoric age)			
Area files (ethnic groups): 106 Original texts: 2,483			

List of Databases as of March 31, 2022

Databases of research resources held in the Museum and outcomes of research projects are made and open to the public.
(For each database description, the numerical value(s) in brackets at the end means the number of records contained in it. Databases with an asterisk are for use only inside the Museum.)

Artifacts

Artifact Catalog
Basic information on the artifacts related to economic activities, everyday life, rituals, and manufacturing tools held in the Museum. Data includes objects' names, images, dimensions and weight, place, culture, and the year of acquisition. [286,510]
Detailed Information on Artifacts in the Catalog
Details about the artifacts held in the Museum, such as their local names and translation, images, materials used in their construction, dimensions and weight, when, where and how they are created or used and by whom, and the place and date of collection. [Inside the Museum: 286,552, including 84,408 records open to the public]

Published References to Artifacts in the Museum
Bibliographic information on published references to artifacts held in the Museum. [80,552]
Korean Daily Commodities Collection
Information (including images) on all daily commodities owned and used by a family in Seoul, South Korea. For each item, its location in their apartment, manner of acquisition, and the family's memories about it are recorded. [7,827]
The George Brown Collection (Japanese and English versions)
Basic collection information (including images) for materials collected by George Brown, a missionary and ethnographer who worked in the Pacific Islands from the late 19th century to the early 20th century, and now held in the Museum. [2,992]

Prints by Indigenous Peoples of Canada *
Basic information and description (including images) on our collection of typical prints created by indigenous peoples of Canada, most of which were displayed in our special exhibition *Voices from the Land, Visions of Life: Beauty Created by the Indigenous Peoples of Canada* in 2009. [158]
The Minpaku Collection of Tibetan Icons and Amulets
Basic information about a wooden religious image of a white cat included in the Tibetan Buddhist painting collection stored by Minpaku and protective charms of traditional Tibetan Buddhism and Bon. [1,439]

Audio-Visual Materials

Visual Materials Catalog
Information on our collections of movie films, videotapes and DVDs (photographs excluded). [8,277]
Videotheque
Information on visual contents provided by the *Videotheque* System in the main exhibition hall of the Museum. It is searchable by keywords as well as by the menu of a Videotheque booth. [837]
Performing Arts Film
Information (including videos) on film records of music, dance and theater that the Museum has made at various places in the world since 1982. Videos are available only inside the Museum. [849]
The Matsuo Minoru Postcard Collection
Information (including images) on picture postcards bought by MATSUO Minoru in places visited during his service in the Japanese Navy from 1919–1923. [170]
Photograph Collection of the Kyoto University Scientific Expeditions
Photographs taken by the Kyoto University Scientific Expedition to the Karakoram and Hindukush in 1955, by the Tonga Expedition of Kyoto University in 1960, by the Kyoto University African Scientific Expedition from 1961–1967, and by the Second Kyoto University Europe Scientific Expedition in 1969. [Inside the Museum: 42,195 including 22,361 records open to public]

The Umeseao Tadao Photo Collection *
Photographs taken by UMESAO Tadao, the first director general of the National Museum of Ethnology, during his fieldwork at various places in the world. [35,481]
Photographs on Aboriginal Australian Culture *
Photographs of various scenes including ceremonies, daily life and landscapes in Aboriginal Australia from 1980–2004 taken by KOYAMA Shuzo, Professor Emeritus, National Museum of Ethnology. [7,999]
The Asaeda Toshio Collection *
Photographs of people, animals and plants in the Pacific Islands taken by ASAEDA Toshio when he visited there in the 1930s as a member of several academic investigation teams. [3,966]
Photographs of Maritime Peoples of Indian and Western Pacific Ocean: The Ohshima George Collection
Photographs taken by OHSHIMA George, during his fieldwork in Asia and Oceania from 1967–1991. [Inside the Museum: 8,842 including 7,889 records open to the public]

Photographs of Cameroon, Africa: The Hata Nobuyuki Collection
Photographs taken by HATA Nobuyuki, Professor Emeritus, National Museum of Ethnology, during his fieldwork mainly in the Republic of Cameroon from 1969 to early 1990s. [6,530]
Morihiro OKI's Photographs of India
Photographs taken by a photographer OKI Morihiro in various places in India and Nepal from 1977–1996. The database includes photographs focused on rituals, festivals, folk paintings, performing arts, artifacts, and everyday life. [Inside the Museum: 22,120 including 21,971 records open to the public]

Nepal Photo Database (Japanese and English versions)
Photographs taken by TAKAYAMA Ryuzo, a graduate student of Osaka City University at that time, and other members of the Japanese Scientific Expedition for Northwestern Nepal in 1958, and information (including images) on artifacts collected by the expedition and now held in the Museum. [3,879]
Photographs on Northwestern Nepal and Manaslu *
Photographs taken by the Japanese Scientific Expedition for Northwestern Nepal from 1958–1959, partly including ones probably taken by the science team of the first Japanese Alpine Club Manaslu Expedition in 1953. They were part of materials of the former Ministry of Education Historical Archives transferred to the Museum. [620]
Ethnographic Images of the Spirit Dance in Thailand *
Photographs and videos of the Spirit Dance in Thailand shot by TANABE Shigeharu, Professor Emeritus, National Museum of Ethnology. The photographs can be searched and viewed by category, place, and ritual host of the Spirit Dance, and are also related to one of the research reports in Thai made about the dance. [Photographs: 10,082, Research reports: 41]

Photographs from the Group of the Synthetic Research of Cultures of Southeast Asian Countries *
Photographs with related information taken by the research group of the Synthetic Research of Cultures of Southeast Asian Countries during the 1st and 2nd missions out of three missions from 1957–1964. [4,393]
The World of Swidden Agriculture: Koumei Sasaki's Perspective
Photographs on swidden agriculture in Japan taken by SASAKI Koumei, former director general of the National Museum of Ethnology, during his fieldwork. [451]
Audio Materials Catalog
Information on our collection of records, CDs and audio tapes. [64,421]
Itemized Information on Audio Records in the Catalog
Piece-by-piece information on music, and episode-by-episode information on traditional folktales records in our collection of audio materials. [351,802]

Library Materials

Book and Periodical Catalog
Bibliographic and holdings information about the books (including microfilms, etc.) and periodicals held in the Museum Library. [Books: 639,661 Periodical Titles: 17,302]
Umeseao Tadao: Written Works (1934–)
Comprehensive catalog of written works from articles and books to endorers on the belly bands since 1934 by UMESAO Tadao, the first director general of the National Museum of Ethnology. [6,985]

Languages

The Nakanishi Collection: World Literary Materials
Information (with images of letter samples) on books, newspapers, manuscripts, and artifacts written in various languages and writing systems collected from all over the world by the late NAKANISHI Akira, former president of Nakanishi Printing Co., Ltd. [2,729]
The Yoshikawa Database of Materials for a Sumerian Lexicon
Digitized notebooks with keywords for Sumerian language studies compiled by YOSHIKAWA Mamoru, Professor Emeritus, Hiroshima University. [Keywords: 33,450 Pages: 40,596]
Talking Dictionary of Khinina-ang Bontok
An electronic dictionary of the Khinina-ang Bontok language spoken in Mountain Province, the Philippines, compiled by Lawrence A. Reid, Researcher Emeritus, University of Hawai'i. It contains image and sound data, as well as information typically found in a printed dictionary. [Headwords: 12,116]
Japanese Traditional Folktales: The Inada Koji Collection
Information (including sound data) on Japanese traditional folktales, documented by INADA Koji at Kyoto Women's University and his group in 29 prefectures of Japan from 1967–1978 (446 tapes, about 190 hour recording). Sounds are available only inside the Museum. [3,696]
rGyalrongic Languages (in English and Chinese)
Database of rGyalrongic Languages, spoken in northwestern Sichuan Province, China, compiled by NAGANO Yasuhiko, Professor Emeritus, National Museum of Ethnology and Dr. Marielle Prins. It contains 425/1200 lexical items and 200 sentences for 83 dialects/languages. It also contains sound data. [Words: 41,078 Sentences: 15,706]

Clothing Culture

Clothing and Accessory Collection
Detailed information and images of clothing materials and accessory artifacts held in the Museum, and field photographs. [32,446]
Publications Concerning Clothing Culture
Index of periodical articles and books that concern the culture of costumes and clothing. This database contains the following items: 1) Japanese periodical articles (current), 2) Japanese periodical articles (before the end of World War II), 3) Foreign language periodical articles, 4) Japanese books, 5) Foreign language ethnographies. [185,494]
Chronology of Clothing Culture in Japan 1868–1945
A digital chronology of clothing culture in Japan from 1868–1945 when western style clothing was not yet common. It consists of information on events, contemporary conditions, illustrations, and memoirs which were collected from newspapers and clothing magazines in that period. [14,514]
Image Database of Japanese Clothing Culture in the Modern Age
Image database on acculturation of clothing culture in Japan from 1868-1945 when Japanese style clothing was as popular as western style one. It includes images found in illustrations of newspaper novels and books, photographs, and posters in that period. [6,764]

Facts, etc.

Research Reports of Materials Located in Japan *
Location information on persons and materials related to folklore and ethnology in Japan, containing 1) artifacts, 2) persons who disseminate traditional technologies, 3) visual materials, and 4) publications. This database was constructed based on the *Research Reports* compiled by researchers appointed by the Museum and published in 1980–2003 by the Museum. [21,373]
Indigenous Architecture Restored by 3DCG: Wooden Buildings in Insular Southeast Asia
Information on wooden buildings which has been investigated by SATO Koji, Associate Professor, National Museum of Ethnology, at various places in Southeast Asia since 1981. GIF animations derived from three-dimensional computer graphics takes us around the inside and outside of buildings. [Locations: 38, Buildings: 61]
Cultural Heritage Recording Memories of Tsunami: Database of Temples, Shrines and Stone Monuments
Information (including images and maps) on temples, shrines, stone monuments and tablets conveying memories of tsunam in coastal area of Japan. [482]
The Heisei Hyakko-Hisho Collection
Information about "the Heisei Hyakko-Hisho," a compilation of samples prepared by the Kanazawa municipal government and Kanazawa College of Art by collecting and organizing samples showing the processes and techniques, product samples, production tools, and materials for crafts from regions across Japan (image included). [579]

Number of Visitors in FY2021

Annual Number of Visitors

Total number of visitors	94,438	Adults	59,757
Daily average	372	Students	30,453
Total number of visitors since the establishment of the Museum	11,661,633	Children	4,228
		primary, junior high school, high school, college and university	
		below primary School	

The National Museum of Ethnology was temporarily closed, due to the state of emergency caused by the novel coronavirus pandemic (COVID-19), from 25th April to 22nd June, 2021.

Special Exhibitions	
“Local Cultures Assisting Revitalization: 10 Years since the Great East Japan Earthquake” March 4 – May 18, 2021	3,578
* The National Museum of Ethnology was temporarily closed, due to the state of emergency caused by the novel coronavirus disease (COVID-19), from 25th April, 2021.	
“‘UNIVERSAL MUSEUM’: Exploring the New Field of Tactile Sensation” September 2 – November 30, 2021	26,613
Thematic Exhibition	
“The Vibrance of Indian Fabrics” October 28, 2021 – January 25, 2022	26,889
Traveling Exhibitions	
“Toys Expo—Children in Modern Japan” July 2 – August 22, 2021 Shimane Museum of Ancient Izumo	6,376
“Local Cultures Assisting Revitalization: 10 Years since the Great East Japan Earthquake” August 4 – September 29, 2021 National Institute of Japanese Literature	153
“Beads from Aynu Mosir to the World ” October 2 – December 5, 2021 National Ainu Museum	21,682

Special Exhibitions

Exhibition Title	Period
The Great Andes Civilization: Inca, the Reviving Empire of the Sun	Sept. 14 – Dec. 12, 1989
Masks in Equatorial Africa: Hidden Forest Spirits*	Mar. 15 – May 31, 1990
The E.S. Morse Collection: Meiji Folk Crafts that Crossed the Pacific	Sept. 13 – Dec. 4, 1990
Engelbert Kämpfer: The Genroku Period Viewed by a German*	Feb. 7 – Apr. 16, 1991
Greater India: Deities and Man in the Hindu World	Aug. 1 – Nov.5, 1991
Daghestan, Crossroads of Civilization: Ethnic Arts of the Caucasus*	Mar. 12 – May 19, 1992
Aboriginal Australia: Fifty Thousand Years of Hunters and Spirits	Sept. 10 – Dec. 8, 1992
Asia Viewed by Torii Ryuzo, a Pioneer of Ethnology*	Mar. 11 – May 14, 1993
Ainu Moshiri: The Ainu World Viewed through Their Designs	June 10 – Aug. 17, 1993
Javanese Cotton Print: A World of Diverse Traditions	Sept. 9 – Nov. 30, 1993
Indigenous Peoples and Cultures in Taiwan*	Mar. 10 – May 24, 1994
Woven Flowers of the Silk Road: An Introduction to the Carpet Heritage of West Asia and Central Asia	Sept. 8 – Nov.29, 1994
Music and Musical Instruments in Latin America*	Mar. 16 – May 30, 1995
Weaving Color as Culture: The Maya Today	Sept. 14 – Nov. 30, 1995
Japan through the Eyes of Siebold and His Son	Aug. 1 – Nov. 19, 1996
Images of Other Cultures: From the British Museum Collection	Sept. 25, 1997 – Jan. 27, 1998
What is Inside? Forays and X-rays into Ethnographic Objects*	Mar. 12 – May 26, 1998
Mongolia: The Rise of Nomadic Culture	July 30 – Nov. 24, 1998
Cultural Heritage of the South Pacific: The George Brown Collection*	Mar. 11 – May 31, 1999
Ethnic Cultures Abroad: People Moving, Cultures Mixing	Sept. 9, 1999 – Jan. 11, 2000
Theater at the Museum: The Expressive Body	Mar. 18 – May 14, 2000
Ethnology and the Rise of Cinema: From Shadow Theater to Multi-Media	July 20 – Nov. 21, 2000
Ethnology of Life in the Taisho and Showa Periods: Shibusawa Keizo and the Attic Museum	Mar. 15 – June 5, 2001
The Sea Otter and Glass Beads: Trade of Indigenous Peoples of the North Pacific Rim	Sept. 20, 2001 – Jan. 15, 2002
Seoul Style 2002: Life as It Is with the Lee Family	Mar. 21 – July 16, 2002
Wrapping Culture: Furoshiki and Wrapping Cloths of the World	Oct. 3, 2002 – Jan. 14, 2003
Mandala Deities in Tibet and Nepal	Mar. 13 – June 17, 2003
A West African Story-telling Village	July 24 – Nov. 25, 2003
Messages from the Ainu: Craft and Spirit	Jan. 8 – Feb. 15, 2004
Multiethnic Japan: The Life and History of Immigrants	Mar. 25 – June 15, 2004
The Arabian Nights	Sept. 9 – Dec. 7, 2004
More Happy Every Day: The World of Bricolage Art	Mar. 17 – June 7, 2005

*The distinction between a special exhibition and a thematic exhibition was abolished in 2001 and now all of the temporary exhibitions are called “Special Exhibitions”.

Exhibition Title	Period
Fashioning India	Sept. 8 – Dec. 6, 2005
Minpaku Kids-World: Objects as Ties between Children and Their Society	Mar. 16 – May 30, 2006
Arabesque of Batik Designs and Techniuiues: From Java to the World	Sept. 7 – Dec. 5, 2006
Pilgrimage and Sacred Places: A Voyage of Self Discovery	Mar. 15 – June 5, 2007
The Great Ocean Voyage: YAKA MOANA and Island Life Today	Sept. 13 – Dec. 11, 2007
The Profound Earth: Ethnic Life and Crafts of China	Mar. 13 – June 3, 2008
SELF and OTHER: Portraits from Asia and Europe	Sept. 11 – Nov.25, 2008
When Japan’s Tea Ceremony Artisans Meet Minpaku’s Collections: Creative Art in Perspective	Mar. 12 – June 14, 2009
Voices from the Land, Visions of Life: Beauty Created by the Indigenous Peoples of Canada	Sept. 10 – Dec. 8, 2009
Africa in the Works of El AnatsuiA Fateful Journey	Sept. 16 – Dec. 7, 2010
Umesao Tadao: An Explorer For the Future	Mar. 10 – June 14, 2011
Devotion to the Arts of Living Daily Life Among the Aynu of the Kurile, Sakhalin and Hokkaido Islands: Objects from the Late 19th - Early 20th Century Collections of Ethnological Museums in Germany and Japan	Oct. 6 – Dec. 6, 2011
“Modernologio” Now: Kon Wajiro’s Science of the Present	Apr. 26 – June 19, 2012
The Warp and Weft of Weaving: Handlooms and Textiles of the World	Sept. 13 – Nov. 27, 2012
Zafimaniry Style: Life and Handicrafts in the Mist Forest of Madagascar	Mar. 14 – June 11, 2013
Shibusawa Keizo Memorial Project Attic Museum	Sept. 19 – Dec. 3, 2013
The Power of Images: The National Museum of Ethnology Collection	Sept. 11 – Dec. 9, 2014
Food Culture in Korea and Japan: The Tastes of NANUM and OMOTENASHI	Aug.27 – Nov.10,2015
Ishuretsuzo, the Image of Ezo: Tracing Persons, Things and the World	Feb.25 – May.10,2016
Amazing Show Tents in Japan	Sep. 8 – Nov. 29, 2016
Beads in the World	Mar. 9 – June 6, 2017
Revisiting Siebold’s Japan Museum	Aug. 10 – Oct. 10, 2017
A ‘Tower of the Sun’ Collection: Expo ‘70 Ethnological Mission	Mar. 8 – May 29, 2018
Transmitting Art and Craft: Japanese Industrial Design Originating in Tohoku	Sep. 13 – Nov. 27, 2018
Toys Expo—Children in Modern Japan	Mar. 21 – May 28, 2019
REGNUM IMAGINARIUM: Realm of the Marvelous and Uncanny	Aug. 29 – Nov. 26, 2019
Treasures of Indigenous Peoples	Oct. 1 – Dec. 15, 2020
Local Cultures Assisting Revitalization:10 Years since the Great East Japan Earthquake	Mar.4 – May. 18, 2021
“UNIVERSAL MUSEUM”: Exploring the New Field of Tactile Sensation	Sep.2 – Nov.30,2021
100 Years of Mongolia: Encounters through Photography	Mar.17 – May.31,2022

Internet

Website <https://www.minpaku.ac.jp/>

The home page features Minpaku research, exhibits, and other activities, along with information on graduate education, publication, and materials in its library and collections.

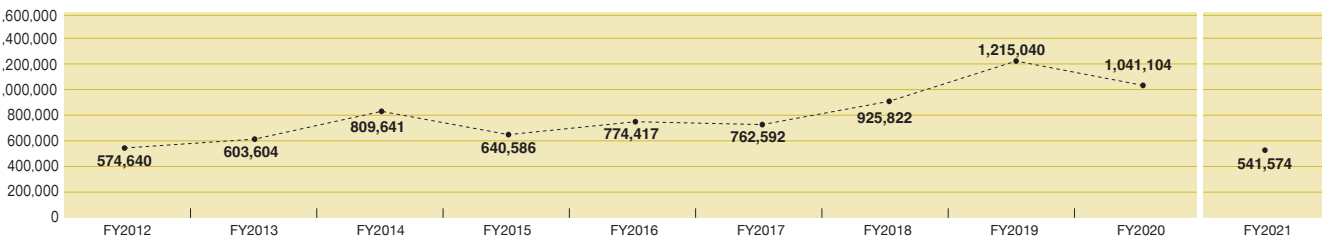
E-mail magazine <https://www.minpaku.ac.jp/museum/enews>

To provide updates on the latest research, special or thematic exhibitions and various events, like Minpaku Seminars, “Minpaku e-news”, a monthly newsletter is emailed to subscribers.

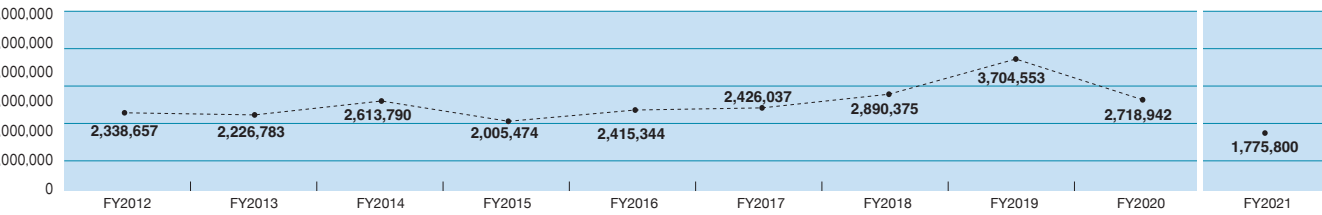
Social Media Facebook <https://www.facebook.com/MINPAKU.official>
Twitter <https://twitter.com/MINPAKUofficial>
YouTube <https://www.youtube.com/MINPAKUofficial>
Instagram <https://www.instagram.com/MINPAKUofficial>

Using various social media provides opportunities to link Minpaku with people interested in cultural anthropology and ethnology, and also to give information on research and museum activities.

Number of Visitors to the Minpaku Website 541,574 (FY2021)



Number of Web Pages Accessed 1,775,800 (FY2021)



*Counting procedures have changed, due to the renewal of our website since FY2021.

Publicity through the Public Media

Publicity is developed through the mass media to convey information about Minpaku’s activities. A program entitled “Window of Research” was launched through the “Meeting for Media and Minpaku Staff”, held monthly on every third Thursday. The Museum has been mentioned in a total of 864 progarms and articles: 28 on TV and on radio, 572 in newspapers, 152 in magazines and 112 in other media. Minpaku has also been featured in regular radio broadcasts and newspaper series.

“*Tabi, Iroiro Chikyujin* [Journeys: Various People on the Earth]”
Published every Saturday since April 2009 in the evening edition of the Mainichi Shinbun newspaper.
Published from April 2005 to March 2009 as a series entitled “The Study of Other Cultures”.

“Deep Minpaku-tankentai (comments about collections from the essayist)”
Published from December 2019 to December 2021 in the *Shukan Shincho*.



Materials for the General Public

Publicity

MINPAKU Anthropology Newsletter
Gekkan Minpaku [Minpaku Monthly]
Minpaku Calender

Guidebooks and Catalogues

Special Exhibition catalogue
“UNIVERSAL MUSEUM”: Exploring the New Field of Tactile Sensation

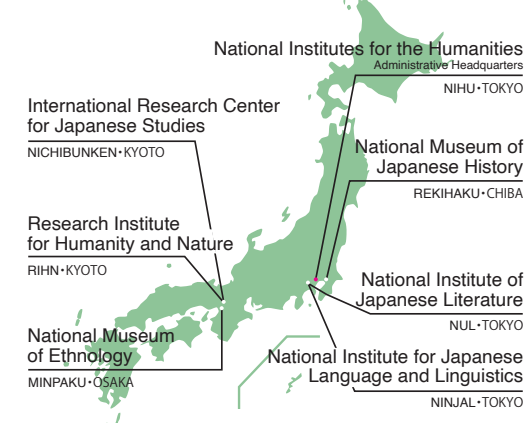
Special Exhibition catalogue
100 Years of Mongolia: Encounters through Photography



National Institutes for the Humanities

The National Institutes for the Humanities (NIHU) consists of six inter-university research institutes that specialize in humanities research. Each institute is deeply involved in and serves as a domestic and international research hub for foundational research in their respective fields. The six institutes interact in a complementary fashion and carry out research that transcends the frameworks of traditional disciplines. Also, they cooperate with other research institutes domestically and internationally in their endeavors to elucidate and solve modern issues. They aspire to realize human life that is rich in the true sense by promoting research on human cultures and creating new values.

Locations of NIHU and Its Six Humanities Research Institutes



Contribution to Graduate Education

NIHU's four humanities research institutes offer courses at the Graduate University for Advanced Studies (SOKENDAI), and the five doctoral programs are designed to take advantage of institutional resources and provide an array of specialized training for scholars. All the six research institutes of NIHU accept graduate students from other universities, thereby contributing to the training of future leaders in their fields.

Courses offered at SOKENDAI

- Department of Regional Studies (Minpaku)
- Department of Comparative Studies (Minpaku)
- Department of Japanese Studies (Nichibunken)
- Department of Japanese History (Rekihaku)
- Department of Japanese Literature (NIJL)

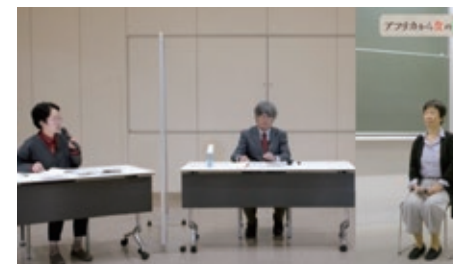
Social Outreach, Providing Public Access to Research Results



39th NIHU Symposium



Joint symposium with the Japan Forum for the Cultivation of Insight from the Humanities



Joint Symposium with the Ajinomoto Foundation for Dietary Culture

Inter-university Research Institute Corporations

NIHU is one of Japan's four inter-university research institute corporations.

Inter-University Research and Education Alliance

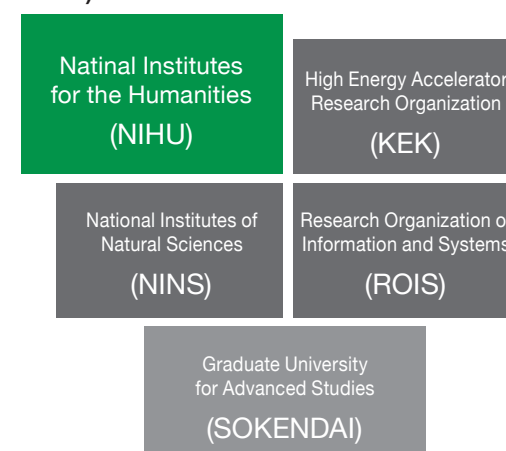
Established on March 1, 2022, the Inter-University Research and Education Alliance (IU-REAL) has five members: the four inter-university research institute corporations (the National Institutes for the Humanities, the National Institutes of Natural Sciences, the High Energy Accelerator Research Organization, the Research Organization of Information and Systems) and the Graduate University for Advanced Studies (SOKENDAI).

IU-REAL aims at leading the further development of academic research in Japan by promoting collaborative projects for the five members to fully perform their respective functions through integrated research and educational activities.

What is IU-Real?

On March 1, 2022 IU-Real was founded with its membership consisting of the four inter-university research institute corporations (NIHU, NINS, KEK, and ROIS) and SOKENDAI.
URL: <https://iu-real.jp>

Inter-University Research and Education Alliance (IU-REAL)



Center for Innovative Research (CIR)

The Center for Innovative Research (CIR), set up under NIHU, promotes both the Transdisciplinary Projects and the Co-creation Research Initiatives. As a core of fundamental and interdisciplinary research, CIR seeks to spur development in three research orientations—a creative collaboration with society, digitalization in response to the new era, and advancement of international collaboration.

NIHU Transdisciplinary Projects

In boosting fundamental and interdisciplinary research on human cultures that forms the foundations of NIHU, we carry out eleven research projects of three types, thereby expanding networks of scholarship and creating new fields of research. This, we hope, will strengthen the functions of the six NIHU-member research institutes in fulfilling their missions as inter-university research institutes.

Institute-based Projects

Given the results of the evaluation of education and research activities of each inter-university research institute, projects of this type aim to facilitate deeper studies in research fields according to the institutes' respective missions.

Multidisciplinary Collaborative Projects

Through interdisciplinary and transdisciplinary projects, the NIHU-member institutes promote co-creative research through organic linkages with each other.

Network-based Projects

Projects of this type aim to create attractive research hubs through networks with universities and other research and education institutions to tackle issues in various fields of research.

Construction of Japanese Historical Knowledge and Open Science Research
Model Building in the Humanities through Data-Driven Problem Solving
Empirical and Applied Research on the Japanese Language Based on Open Language Resources
New Departures and Consortium for Global Japanese Studies: Pioneering and Cultivating Global Japanese Studies
Renewing Modern Civilization through Nature-culture Complex toward Solving Global Environmental Problems
Sustainable Development Humanities Research Based on the Info-Forum Archives of Human Culture
Interdisciplinary and Integrated Studies on Local Cultures: Aiming for the Emergence of Novel Communities
Object-based Research of Nature-human Interactions up to the Anthropocene
Expansion Studies of Synthetic Bibliology
NIHU Area Studies
Inter-University Research Institute Network Project to Preserve and Succeed Historical and Cultural Resources

NIHU Co-creation Research Initiatives

Knowledge Co-creation Projects: These projects are to lead the way toward fulfillment of NIHU's missions and collaborative research that will strengthen the functions of its institutes through co-creation efforts of a wide variety of organizations and people in and out of NIHU. Efforts are focused in three research orientations—a creative collaboration with society, digitalization in response to the new era, and advancement of international collaboration.

- Establishing Science for Universal Communication (S_COM)
- Japan-related Documents and Artifacts Held Overseas: NIHU International Collaborative Research
 - 1) Early Diplomatic Japanese Collections Abroad: Contextualizing 19th Century Japanese Material Heritage in World History through On-site and Online Research and Use
 - 2) Study on the Construction of Archival Infrastructure for the History of Modern Japan-Vatican Relations
 - 3) Japan-related Documents and Artifacts in Hawai'i: Historical and Social Survey Interface
- Building Digital Library for Humanities

Co-creation Outreach Initiatives: This project accelerating the three orientations above will promote research advancement and creativity at NIHU's research institutes and other research institutes including universities.

■ **NIHU Knowledge Co-creation Projects:** These projects have the following activities to promote societal co-creation in cooperation with NIHU's research institutes and other research institutes including universities: 1) visualizing cutting-edge research works in the humanities through museums and exhibits; 2) leading research promotion models that boost research through co-creation with academia and society; 3) organizing and advertising the NIHU symposiums on the humanities and other activities.

■ **NIHU "Digital Humanities" (DH) Projects:** These projects are a new initiative for the humanities that will be opened up by accelerating digitalization and making a variety of research databases widely accessible.

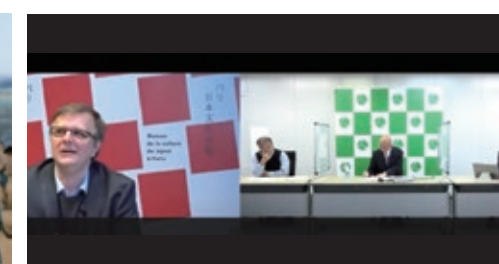
■ **NIHU Global Partnership:** International interactive networks with overseas universities, research institutes, and outstanding scholars (such as recipients of the NIHU International Prize in Japanese Studies) will be newly built to invigorate research exchange including training for young scholars in humanities.



The Archives of Paris Foreign Missions Society



NIHU Program for Young Researcher Overseas Visits



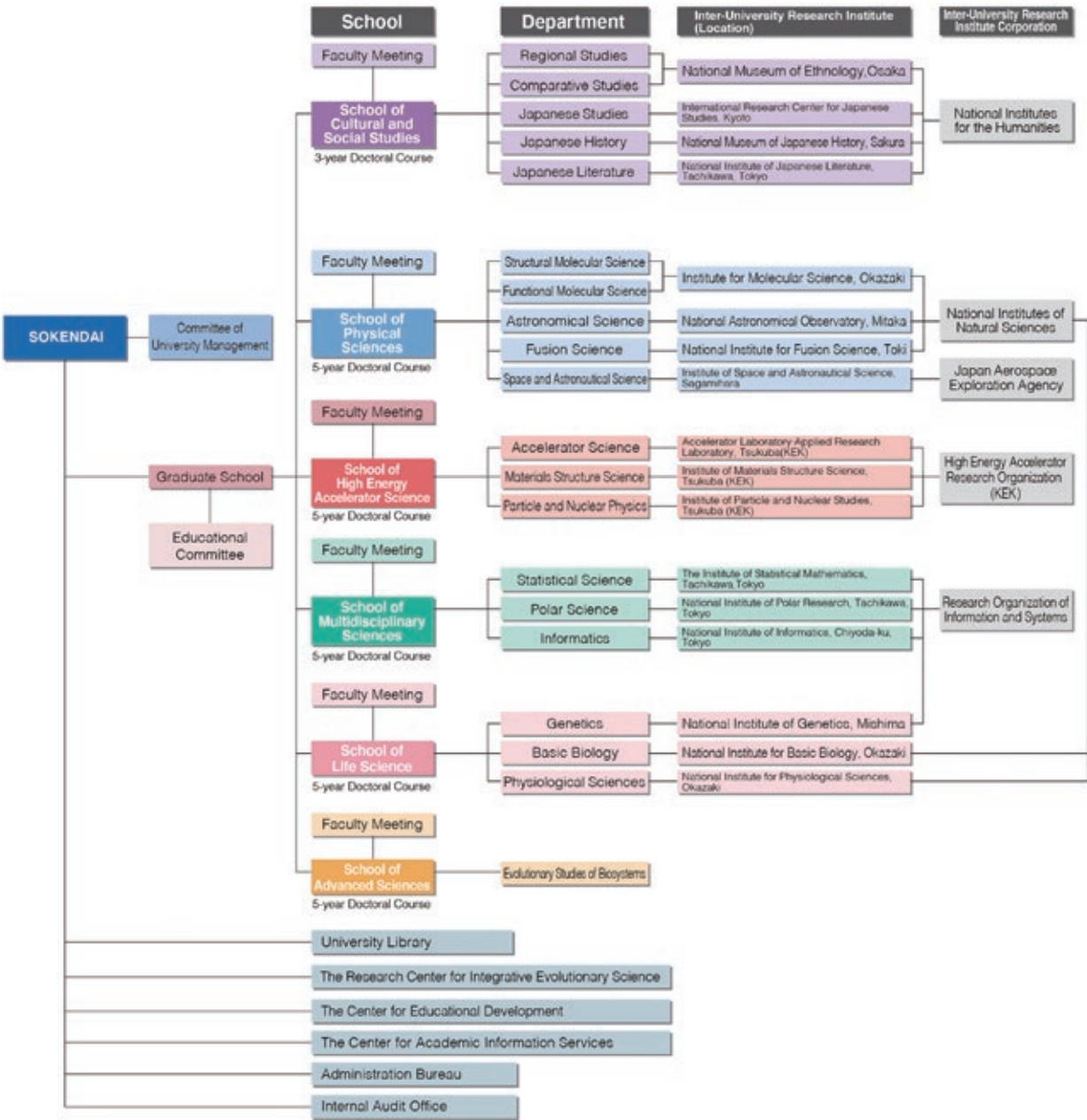
Collaborative online lectures jointly organized by the Japan Cultural Institute in Paris and NIHU



Resource Sharing Promotion Project Committee, National Institutes for the Humanities

The Graduate University for Advanced Studies, SOKENDAI is a national university offering a graduate program only. By taking advantage of the close network among the 18 Inter-University Research Institutes and the joint research opportunities thus afforded, and by promoting interaction among different schools and departments within SOKENDAI and also among universities and graduate schools both domestic and overseas, SOKENDAI aims to develop researchers with the ability to think from broad, comprehensive, and global perspectives.

University Organization



The Graduate University for Advanced Studies

Our museum accommodates the School of Cultural and Social Studies (with the Department of Regional Studies and the Department of Comparative Studies) of The Graduate University for Advanced Studies, SOKENDAI. Both of these departments conduct educational and research activities taking advantage of the human resources and advanced research environment of the Inter-University Research Institutes, which are playing a leading role in promoting joint research projects around Japan.

Purpose of the Departments of Regional Studies and Comparative Studies

Educational studies are composed of lectures and instruction by individual faculty members and shared seminars by multiple faculty members. Two types of shared seminars are offered: the basic seminar called the “Freshman Seminar” which is mainly for freshmen and the “Thesis Seminar” for sophomores and more advanced students focusing on instruction for thesis writing. Common subjects (advanced theory) on cultural anthropology and ethnology are also conducted primarily for first year students.

Under student exchange agreements, credits for these courses can be transferred among the Graduate School of Asian and African Area Studies at Kyoto University, the Graduate School of Human Sciences at Osaka University, the Graduate School of Intercultural Studies and the Graduate School of Human Development and Environment at Kobe University.

In most cases, students work on preparation for fieldwork during the first year, and proceed to fieldwork in the second or subsequent years under the supervision of their advisors. Then, after finishing their fieldwork, the students complete their dissertations under the individual guidance of their advisors and through participation in the “Thesis Seminar”. The purposes of educational studies in both departments are as follows:

- (i) Original research on cultural anthropology and ethnology
- (ii) Writing a thesis based on data from long-term fieldwork
- (iii) Training researchers with broad horizons and a deep sense of humanity

Number of Students as of April 1, 2022

Quota and Current Number of Students

Department	Quota	Current Students			Total
		First year	Second year	Third year	
Regional Studies	3	1	2	9	12
Comparative Studies	3	1	2	8	11
Total	6	2	4	17	23

Number of Doctoral Degrees Awarded

Academic Year	Regional Studies		Comparative Studies		Total
	By Completing Doctoral Course	By Submitting Dissertation	By Completing Doctoral Course	By Submitting Dissertation	
1991			1		1
1992					
1993			1	1	2
1994	2		1		3
1995	2		1		3
1996		3			3
1997	3		4		7
1998	4	2			6
1999					
2000	2		2	1	5
2001	1	1	2	1	5
2002	1	1		2	4
2003					
2004	2	3			5
2005	4	2		2	8
2006	2		3		5
2007	2	1	3		6
2008	1		1		2
2009		1	1	1	3
2010	2		2	3	7
2011	3		1	1	5
2012	1	1	1	1	4
2013			1	1	2
2014	2	1	2		5
2015	3	1			4
2016	1	1	1		3
2017	1		1		2
2018	1				1
2019	1		2		3
2020	1	1	2		4
2021	4		3	1	8
Total	46	19	36	15	116

Acceptance of Overseas Researchers under the RONPAKU (Ph.D. Dissertation) Program

Grantees of the RONPAKU (Dissertation Ph.D.) Program offered by the Japan Society for the Promotion of Science (RONPAKU fellows) conduct their research under the supervision of advisors in the respective department of the Graduate School. Currently, one overseas researcher is in the program.

General Information

Hours and Closing Days

Hours	10:00 a.m. to 5:00 p.m. Entry permitted up to 4:30 p.m.
Closing days	Every Wednesday. When a national holiday falls on a Wednesday, the Museum is closed instead on the following day. The Museum is closed from December 28 until January 4 for the year-end and New Year period.

Admission Charges

	Individual	Groups (20 persons or more) and visitors eligible for discount *
Adults	¥580	¥490
College and University Students	¥250	¥200
High School Students and Younger	Free	

An additional charge may be necessary for Special Exhibitions.

Admission is free for holders of a Disabled Person's Handbook and one accompanying person per holder.

Admission is free for members of the Japanese Society of Cultural Anthropology, International Council of Museums, and Japan Association of Museums (a membership certificate is required).

The following visitors qualify for a discounted admission charge (please present documentation); 1) Groups of 20 or more; 2) College, university, graduate, and vocational school students who use the Museum as part of their course work; 3) those who have visited the Museum within the previous three months; 4) Visitors aged 65 and over (ID required)

(If you purchase a regular Museum ticket at the entrance to the Natural and Cultural Garden, the difference will be refunded at the Museum.)

Contact Information

National Museum of Ethnology
10-1 Senri Expo Park, Suita, Osaka 565-8511, Japan
Tel: +81-6-6876-2151 Fax: +81-6-6875-0401

Website

https://www.minpaku.ac.jp/en

Information and Services

The Minpaku Associates Tel: +81-6-6877-8893 (Senri Foundatio 9:00 a.m.–5:00 p.m. on weekdays only) minpakutomo@senri-f.or.jp

The organization, Minpaku Associates was formed to support the activities of the National Museum of Ethnology and to use its facilities actively.

With cooperation of the Museum, the Minpaku Associates publishes Kikan Minzokugaku (Quarterly Ethnology) and organizes and operates “training trips,” offering opportunities for direct contact with various cultures, experience seminars, lectures, and other events.

Museum Shop (Hours: 10:00 a.m. to 5:00 p.m.) Tel: +81-6-6876-3112

Visitors can buy folk crafts from various parts of the world and books on anthropology and ethnology in the museum shop.

Restaurant (Hours: 11:00 a.m. to 4:30 p.m. Last Orders: 4:00 p.m.) Tel: +81-6-6310-0810

We serve lunch and dinner, including such dishes as hamburger steaks and omelets, and light meals and desserts. We can seat 110 diners, and our restaurant accepts reservations from small groups with a few individuals to large groups such as parties with many people. Group customers can also reserve our box lunches.



Minpaku Associates Desk



Museum Shop



Restaurant



“Ethnological Study Tours Overseas” organized by Minpaku Associates (Minpaku Tomonokai) (FY2019)



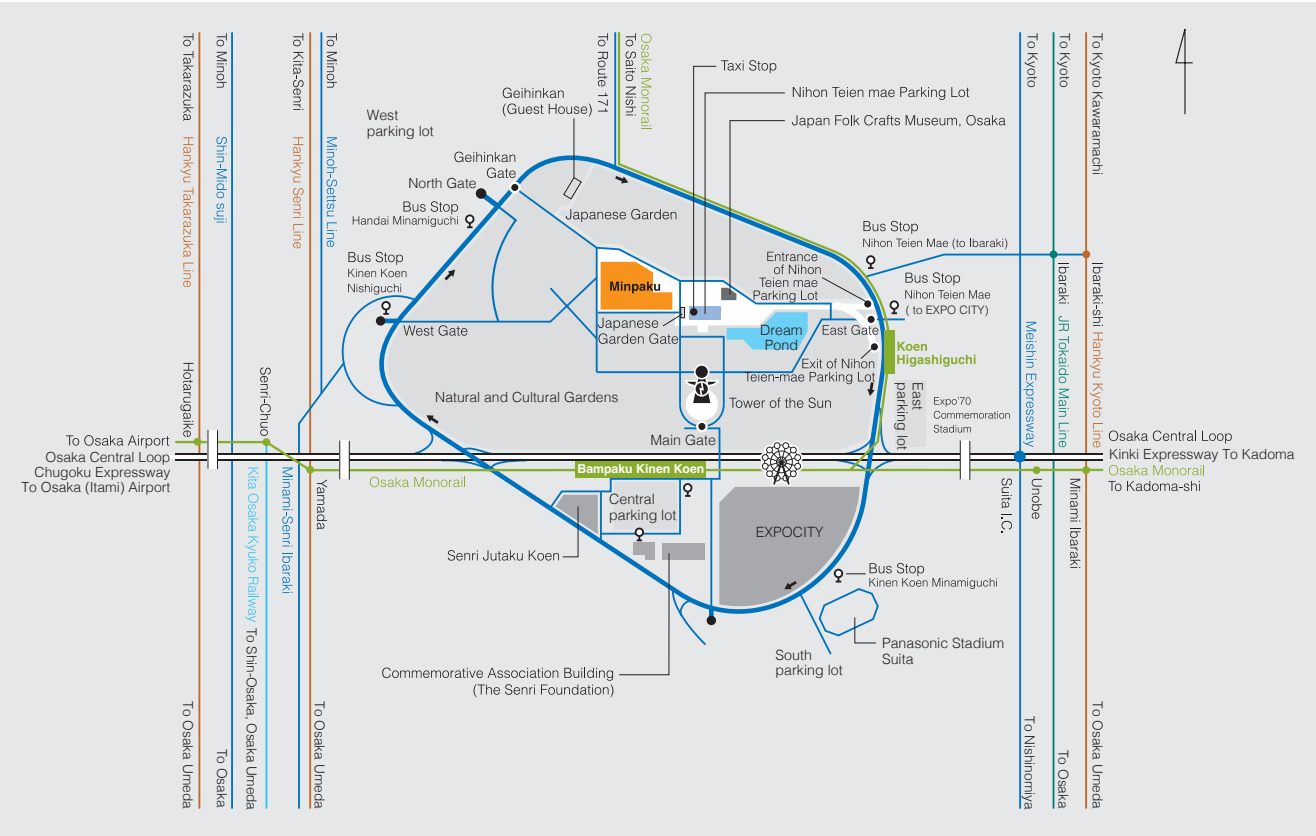
Kikan Minzokugaku [Ethnological Quarterly]



Access Information

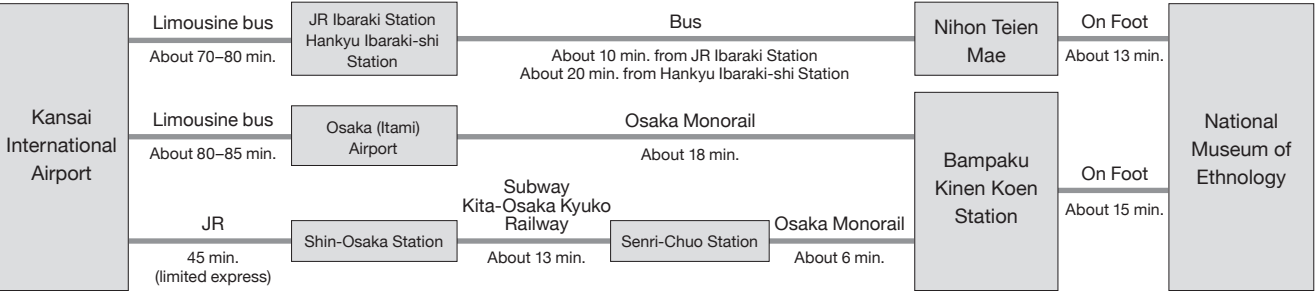
- By Osaka Monorail, from Bampaku Kinen Koen Station or Koen Higashiguchi Station it is about a 15-minute walk to the Museum through the Natural and Cultural Garden.
 - By bus, from Hankyu Ibaraki-shi Station and JR Ibaraki Station alight at Nihon Teien Mae, from which it is about a 13-minute walk to Minpaku.
 - By car, please park at one of the parking lots for the Expo’70 Commemorative Park. From the nearest pay parking lot, in front of the Japanese Garden, it is about a 5-minute walk to the Museum. Please enter the Museum through the Japanese Garden Gate.
 - By taxi, you will get dropped off in the parking lot in front of the Japanese Garden. Please enter the Museum through the Japanese Garden Gate.
- * Please buy a museum ticket at the gate of the Expo’70 Commemorative Park. Ticket holders can pass through the park at no charge.
- * If you visit the Expo’70 Commemorative Park, you need to buy an entry ticket.

Map



Major Access Routes

Access routes to the Museum from airports and major railway stations are as shown below.



Survey and Guide

2022-23



National Museum of Ethnology

10-1 Senri Expo Park, Suita, Osaka 565-8511, Japan