



National Museum of Ethnology, Japan

Survey and Guide

2023-24





National Museum of Ethnology, Japan

Survey and Guide for

2023-24

(Fiscal Year April 1, 2023–March 31, 2024)

Contents

Preface	1
Purpose and Functions	2
Organization	3
Governing Body/Research Organization	3
Center for Cultural Resource Studies	6
Center for Academic Research Development	7
Institutional Research (IR)	7
Research Activities	8
Joint Use of the Museum	24
Joint-Use Facilities for Scientific Research	24
Library	25
Materials	26
Exhibitions	28
International Cooperation	36
Partnership between the Museum and Society	37
Data Collection	41
History	42
Former Directors-General/Professors Emeriti	43
Facilities	45
Cooperative Agreements	46
Materials and Databases	48
National Institutes for the Humanities	52
SOKENDAI	54
(The Graduate University for Advanced Studies)	
General Information	56



Stool, Uzbekistan

Preface

In 1974, the National Museum of Ethnology, Japan (Minpaku) was founded as an Inter-University Research Institute in cultural anthropology and ethnology, equipped with one of the world's largest museum facilities. It opened to the public in 1977 at the site of the 1970 International Exposition located in Senri, Osaka. 2024 marks its 50th anniversary.

Each researcher at Minpaku engages in fieldwork in various parts of the world to promote the investigative study of the diversity and commonality of human culture and the dynamic state of society on a global scale. Anthropological Studies of the Graduate Institute for Advanced Studies, SOKENDAI is also based in the museum. The National Museum of Ethnology is regarded as the only anthropological institution in the world equipped with research, education, and museum facilities that can cover the entire globe.

Over 345,000 objects have been collected at Minpaku, constituting the world's most extensive ethnographic collection after the second half of the 20th century.

Based on such academic resources, Minpaku continues to conduct its activities under the mission of "creating the science for global human coexistence," which helps to produce a more profound recognition of the self and the other, and to present guidelines for building a convivial society, cooperating with universities and research institutions in Japan and abroad across disciplines.

Human civilization today is facing the most significant turning point in several centuries. Until recently, the group regarded as central ruled and controlled unilaterally the group regarded as peripheral. The dynamics of this power relationship seem to be changing now. These days, we witness that contacts, interactions, and amalgamation, including the creative and the destructive, are occurring worldwide in a bilateral manner between those two entities, one used to be regarded as central and the other peripheral.

The coronavirus disease 2019 (COVID-19) pandemic has fundamentally changed our way of life since its global spread in 2020. Through the pandemic experience, we have come to understand that our lives are intricately linked not only to animals and plants but also to the movements of invisible viruses and bacteria. During this period, our temporary practice of reducing direct interpersonal contact revealed a sense of discrimination latent in society. New developments have emerged that have divided the world.

Currently, more than ever, anthropological knowledge and ethnological museums that deepen the understanding of the self and others based on empathy for others, including all living creatures, are required.

Minpaku is now promoting Special Research Project entitled "Ethnic Groups and Ethnicity in the Post-Nationalist Era." Amid the instability and gyrations of nation-state frameworks, ethnic groups face conflicts and divisions. This international research project has been designed to analyze and elucidate the current world situation in a multilayered manner by combining cultural anthropology and its related fields, and thus to explore guidelines for the realization of a convivial human society.

In addition, Minpaku is now carrying out a project on the "Info-Forum archives" (Full title: "Sustainable development humanities research based on the Info-Forum archives of human culture.") This project aims to share information about its collection of artifacts, photographs, and videos, along with academic resources such as research papers, not only with domestic and international researchers and users but also with the people initially providing those materials. The project will continuously accumulate and analyze the newly gained insights, with efforts to promote exploration through space and time for the commonality and diversity of human cultures and their transformation.

Through these research and museum activities, the National Museum of Ethnology, Japan, is trying to establish, in a more evolved and substantial manner than ever before, the "forum of wisdom." That is a place where diverse people will enjoy having intellectual interactions, sharing their ideas, and engaging in collaborative work.

I sincerely ask for your continued cooperation and support in implementing our activities.



YOSHIDA Kenji
Director-General
National Museum of Ethnology, Japan

Purpose and Functions

Purpose

The National Museum of Ethnology conducts anthropological and ethnological research. It aims to promote a general understanding and awareness of peoples, societies, and cultures worldwide through the collection, preservation, conservation, research, release, and educational dissemination of ethnographic materials and public exhibitions. Minpaku was established in 1974 as an Inter-University Research Institute under the “Law to amend part of the National School Establishment Law” (No. 81, 1974). In April 2004, it made a fresh start as a member of the National Institutes for the Humanities, under the “National University Corporation Act” (No. 112, 2003).

Functions

Research Institute	The Museum functions as a research institute equipped with a museum. It serves as a research center for anthropology and ethnology, providing information and research results to academic communities and the general public through publications, exhibitions, and other means. All researchers at Minpaku are experts in various fields, such as cultural anthropology, ethnology, linguistics, ecological anthropology, archaeology, ethno-technology, ethno-arts, area studies, and museology.
Joint Research	As an Inter-University Research Institute, the Museum supports and organizes joint research projects with researchers from other academic institutions. We collaborate with researchers at universities and research institutions, both in Japan and overseas, to plan and execute various research projects. Materials collected and stored in the Museum are used widely by those researchers.
Information Center	The Museum collects, manages, and conserves materials that contribute to the understanding of the world’s peoples, societies, and cultures. These materials include artifacts, visual and audio materials, library materials, Human Relation Area Files (HRAF), and various archival materials generated and accumulated through research. By making information on these materials available to the public through databases and other means, we encourage researchers to use them.
Exhibitions	The Museum makes the research results available to the public through exhibitions. Academic staff members plan and manage exhibitions with the basic policy of closely linking research and exhibitions. The main halls hold Regional and Cross-cultural exhibitions. The former displays cultures and societies in major regions, whereas the latter emphasizes cultural elements, such as music and language, which are shared across human societies. Thematic and collection exhibitions are occasionally held. They focus on rapidly changing global situations and feature current research in cultural anthropology and ethnology. In addition, the Museum comprehensively and systematically presents special exhibitions on specific themes.
Social Contributions	To present its latest research findings to the public, the Museum offers academic lecture programs, seminars, weekend salons, special lectures and performances, film shows, and various workshops. The Museum also organizes intensive courses on Museums and Community Development, and various projects for other museums, as part of its international cooperation activities.
Graduate Programs	The Museum is one of the core research institutes of the Graduate University for Advanced Studies (SOKENDAI), with Anthropological Studies program of the Graduate Institute for Advanced Studies (three-year doctoral program). We develop researchers who study the knowledge and methodologies accumulated in cultural anthropology, ethnology, and related fields, which can promote a high level of research by applying the acquired knowledge and methodologies. We offer collaborative educational programs in cooperation with several graduate universities.



Organization

Governing Body as of April 1, 2023

Director-General Sixth Director-General April 2017– YOSHIDA Kenji Representation of Culture in Museum	Deputy Director-General (in charge of research, exchange and Institutional Research (IR)) UDAGAWA Taeko Professor, Department of Cross-Field Research	Deputy Director-General (in charge of planning and coordination) KISHIGAMI Nobuhiro Professor, Center for Cultural Resource Studies	System Coordinator HIRAI Kyonosuke Professor, Department of Globalization and Humanity	Audit Office ENDO Tsuyoshi Director
---	---	---	--	--

Administrative Organization as of April 1, 2023

Office of Administration ENDO Tsuyoshi Director			Office of Information and Documentation KISHIGAMI Nobuhiro Director		ENDO Tsuyoshi Deputy Director
General Affairs Section ISSYA Hiromasa Head	Research Cooperation Section ONO Tomoyasu Head	Finance Section BABA Takeshi Head	Information Planning Section MAEHARA Tadanobu Head	Information Systems and Services Section HOJO Mitsutoshi Head	

Board of Advisors as of April 1, 2023

The advisors discuss the Museum’s management, and operational issues of critical importance, at request of the Director-General.

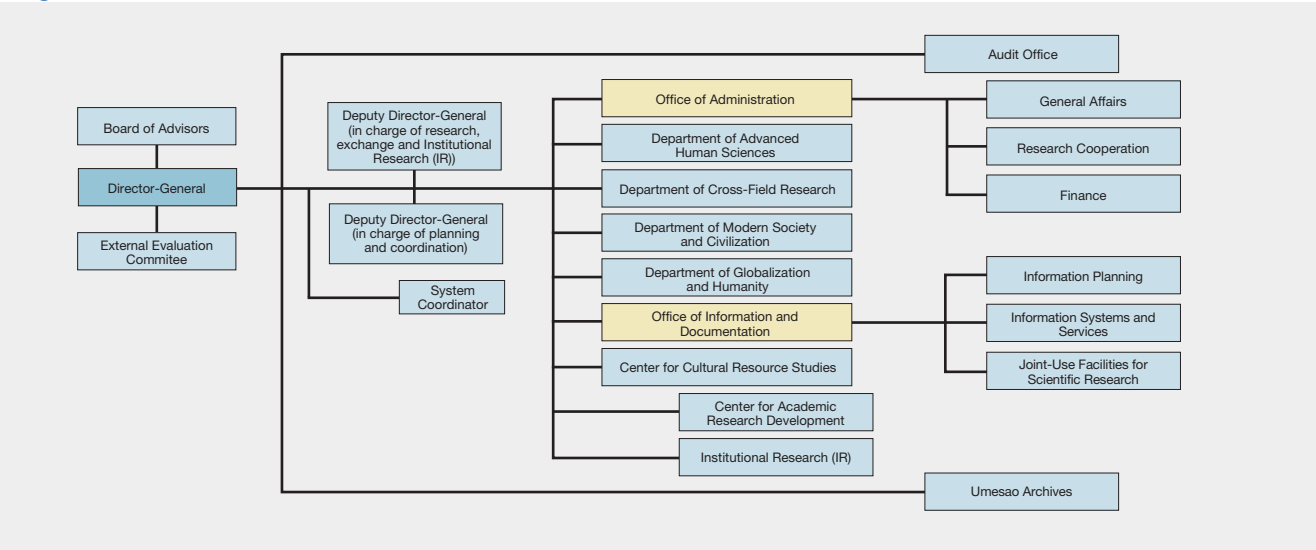
GOTO Akira Special Research Fellow, Anthropological Institute Nanzan University	NAKATANI Ayami Professor, Research Institute for the Dynamics of Civilizations, Okayama University	FUKUOKA Shota Director, Department of Modern Society and Civilization, National Museum of Ethnology	MINAMI Makito Professor, Department of Cross-Field Research, National Museum of Ethnology, Chair, Anthropological Studies, Graduate Institute for Advanced Studies, SOKENDAI (The Graduate University of Advanced Studies)
INOSE Kumie Professor, Faculty of Letters, Konan University	OKADA Hiroki Professor, Graduate School of Intercultural Studies, Kobe University	HAN Min Director, Department of Cross-Field Research, National Museum of Ethnology	SONODA Naoko Director, Department of Advanced Human Sciences, National Museum of Ethnology
KIGAWA Rika Head, Museum Science Division, Curatorial Department, Kyusyu National Museum	TAKAKURA Hiroki Professor, Center for Northeast Asian Studies, Tohoku University	HIDAKA Shingo Director, Center for Cultural Resource Studies, National Museum of Ethnology	UDAGAWA Taeko Deputy Director-General (in charge of research, exchange and (IR)), National Museum of Ethnology/Director, Center for Academic Research Development
KUBOTA Sachiko President, Ashiya University/Professor Emeritus, Kobe University	TOMIZAWA Hisao Vice-president, University of Shizuoka	IIDA Taku Director, Department of Globalization and Humanity, National Museum of Ethnology	
MIZUSAWA Tsutomu Director, The Museum of Modern Art, Kamakura & Hayama		KISHIGAMI Nobuhiro Deputy Director-General (in charge of planning and coordination), National Museum of Ethnology/Director, Office of Information and Documentation	

External Evaluation Committee as of April 1, 2023

The committee meets to inspect and evaluate the Museum’s research and educational activities at request of the Director-General.

DEGUCHI Akira Director, The Open University of Japan Shimane Study Center/Professor Emeritus, Shimane University	KOSAKA Hajime Chairman, The Resona Foundation for Asia and Oceania	OKAZAKI Yoshiko Former President/Professor Emeritus, University of the Sacred Heart	TAKANO Akihiko Professor, National Institute of Informatics	USHIROSHOJI Masahiro Director, Kitakyushu Municipal Museum of Art
ICHIKAWA Mitsuo Professor Emeritus, Kyoto University	MIYAHARA Chie Deputy Director, JICA Ogata Sadako Research Institute for Peace and Development	SAKIMOTO Toshiki President, KANSAI・OSAKA 21st Century Association	TANAKA Masakazu Vice-president, Professional Institute of International Fashion	

Organization Chart as of April 1, 2023



Research Organization as of July 1, 2023

Department of Advanced Human Sciences

SONODA Naoko Director

Professors	Associate Professors	Assistant Professors	Project Assistant Professor
HIROSE Koujiro Japanese Religious History, Folklore	MARUKAWA Yuzo Informatics of Association, Information Service for Cultural Assets	SUEMORI Kaoru Conservation Science, Asian Art Studies	HIRANO Chikako Cultural Anthropology, Indigenous Australian Studies
KIKUSAWA Ritsuko Linguistics, Austronesian Languages	YOSHIOKA Noboru Linguistics, South Asian Studies	MIYAMAE Chisako Heritage Science, Digital Heritage	ICHINO Shinichiro Institutional Research and Evaluation
SASAHARA Ryoji Folk Culture, Performing Arts; Japan	OKADA Emi Ethnomusicology, South Asian Studies		
SONODA Naoko Conservation Science			

Department of Cross-Field Research

HAN Min Director

Professors	Associate Professors	Assistant Professor
HAN Min Social Anthropology; China	MINAMI Makito Ecological Anthropology; South Asia	MATSUO-GOGATE Mizuho Cultural Anthropology, South Asian Studies
KASHINAGA Masao Ethnography of Southeast Asia; Vietnam, Tai Area	SHINMEN Mitsuhiro Science of Religion; Eastern Europe	SUGASE Akiko Anthropology, Middle Eastern Studies
MATTHEWS, Peter J. Ethnobotany, Prehistory, Crop Plant Biogeography; Asia, Pacific	NARA Masashi Cultural Anthropology, Chinese Studies	FUJII Shinichi Cultural Anthropology, Oceanic Studies
	OTA Shimpei Sociocultural Anthropology; Northeast Asia	
	UDAGAWA Taeko Cultural Anthropology, Gender Studies; Italy, Mediterranean Europe	

Department of Modern Society and Civilization

FUKUOKA Shota Director

Professors	Associate Professors	Assistant Professor
FUKUOKA Shota Ethnomusicology; Southeast Asia, Indonesia	IKEYA Kazunobu Environmental Anthropology, Cultural Geography; Southern Africa, Japan	FUJIMOTO Toko Cultural Anthropology, Central Asian Studies
HIRAI Kyonosuke Economic Anthropology, Anthropology of Work; Southeast Asia	SAITO Akira Ethnohistory; Latin America	SAITO Reiko Ainu and Northern Indigenous Peoples Studies, Material Culture; North Pacific Rim
	YAMANAKA Yuriko Comparative Study of Traditions on Alexander the Great; West Asia, Iran	UEBA Yoko Textile and Handcraft; South Asia, Middle East
	MATSUMOTO Yuichi Andean Archaeology, Latin America Studies	SUZUKI Kota Folk Culture, History of the Performing Arts; Japan

Department of Globalization and Humanity

IIDA Taku Director

Professors	Associate Professors	Assistant Professors
IIDA Taku Ecological Anthropology, Fisher Studies; Madagascar, Japan	NOBUTA Toshihiro Social Anthropology, Southeast Asian Studies	AISHIMA Hatsuki Social Anthropology; Islam, Middle East
MIO Minoru Religious Anthropology; South Asia, India	UDA Shuheï Environmental Folklore; East Asia	SUZUKI Hideaki History of the Indian Ocean World, Swahili Society
NIWA Norio Social Anthropology; Oceania	NAKAGAWA Osamu Cultural Anthropology, Anthropology of Europe	YAGI Yuriko Cultural Anthropology, Latin American Studies
		CHE Sohee Medical Anthropology, Northeast Asian Studies
		KURODA Kenji Middle Eastern Studies, Cultural Anthropology

Center for Cultural Resource Studies

HIDAKA Shingo Director

Professors	Associate Professors	Assistant Professor
HIDAKA Shingo Conservation Science	NOBAYASHI Atsushi Ethnoarchaeology, Material Culture, Austronesian Cultures; East Asia, Formosa	KAWASE Itsushi Visual Anthropology
KISHIGAMI Nobuhiro Cultural Anthropology, Inuit Studies; North America	SHIMAMURA Ippei Cultural Anthropology, Mongolian Studies	MISHIMA Teiko Anthropology, International Migration; Senegal, West Africa
	SUZUKI Motoi Anthropological Perspectives on Development Assistance Evaluations	ONO Rintaro Marine Archaeology, Southeast Asian Studies
		TERAMURA Hirofumi Culture and Information Science, Archaeological Information
		KAWANISHI Eriko Anthropology, Pagan Studies

Center for Academic Research Development

UDAGAWA Taeko Director

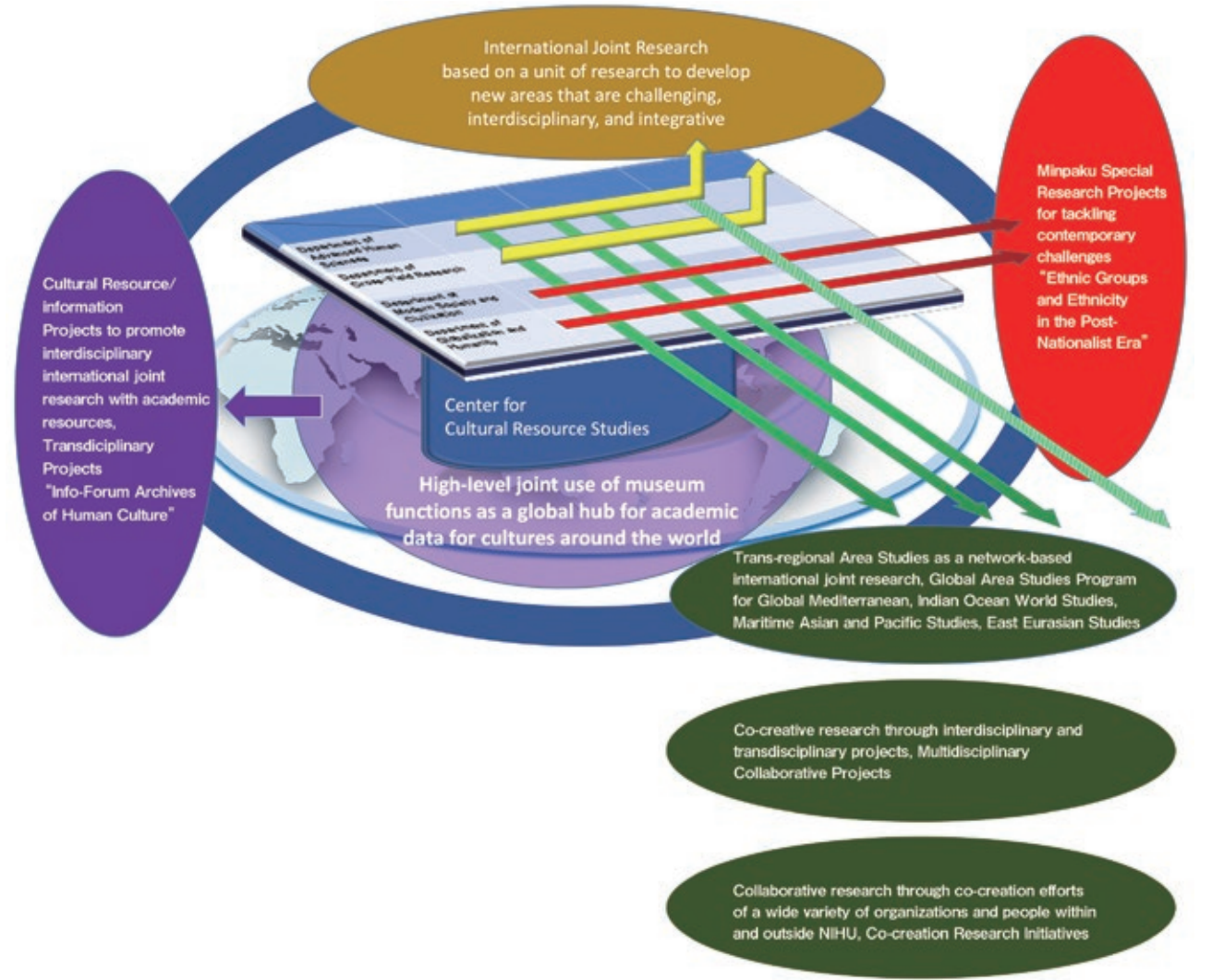
AISHIMA Hatsuki Associate Professor, Department of Globalization and Humanity	MIO Minoru Professor, Department of Globalization and Humanity	SHIMAMURA Ippei Professor, Center for Cultural Resource Studies
KASHINAGA Masao Professor, Department of Cross-Field Research	NOBAYASHI Atsushi Professor, Center for Cultural Resource Studies	UDA Shuheï Professor, Department of Globalization and Humanity

Umesao Archives

IIDA Taku Director

MARUKAWA Yuzo Associate Professor, Department of Advanced Human Sciences	SUEMORI Kaoru Associate Professor, Department of Advanced Human Sciences
--	--

The Center aims to plan and oversee the infrastructure enhancement and international and national strategies for research organizations to be used jointly to explore new domains.



Research Associates

Department of Advanced Human Sciences

UEMURA Yukio
Professor, Faculty of Music, Tokyo University of the Arts
Reconstruction and Revitalization of Japanese Folk Music
through Utilizing the Toyo Ongaku Gakkai Sound Archives
Preserved in the National Museum of Ethnology

Department of Modern Society and Civilization

KATAOKA Tatsuki
Professor, Graduate School of Asian and African Area
Studies, Kyoto University
Toward a New Perspective for Japan Studies Reflecting
Overseas Field Experiences

KITAHARA Mokottunas
Professor, Center for Ainu
and Indigenous Studies, Hokkaido University
Material Culture of the Sakhalin Ainu and Its Differences
and Similarities with Neighboring Cultures

Department of Globalization and Humanity

SHIRAI Chiaki
Professor, Faculty of Humanities and Social Sciences,
Shizuoka University
Interdisciplinary Study on Reproductive Technology
and Childrearing in Modern Asia

YAMANOUCHI Yuriko
Associate Professor, Institute of Global Studies,
Tokyo University of Foreign Studies
A Comparative Ethnography of Belonging and Difference
in Mixed Heritage Peoples: Cases from Indigenous Peoples
in Ocesnia

Center for Cultural Resource Studies

DOI Kiyomi
Associate Professor,
Faculty of Literature, Nishogakusha University
Reorientation of Uncertainty in Tourism

OCHIAI Yukino
Professor, Faculty of Agriculture, Ryukoku University
Research on Historical Changes in Forest Resources
and Their Uses Based on the Analysis of National Museum
of Ethnology Collection: Focusing on the Wood Materials
of Tubs and Barrels

YAMAGUCHI Mikako
Associate Professor, Graduate School of Humanities
and Human Sciences, Hokkaido University
The Anthropology of the “Depicted Animals”:
Focusing on the Becoming in Animals and Humans

Center for Cultural Resource Studies

Object

The Center for Cultural Resource Studies was established on April 1, 2017, with the objective of improving access to cultural resources at the Museum for interdisciplinary and international research.

Development of Cultural Resource Study

The National Museum of Ethnology (Minpaku) owns about 345,000 artifacts, 70,000 items of video and sound resources, 670,000 books, and other research resources such as photographic archives, research database, and field note archives, survey papers, and other ethnological research papers left by cultural anthropologists and ethnologists. These are important cultural resources that relate to the humanity’s cultures and activities, and precious academic resources to reflect on the past, present and future of humanity. The Museum is undertaking projects to improve the shared availability of these cultural resources for interdisciplinary and international research, by publishing the research results and information on these cultural resources through a database called Info-Forum Museum, and through other media including Special Exhibitions, Thematic Exhibitions, and Traveling Exhibitions. The Center supports these research projects, and plans and promotes new projects.

Overseas Visiting Fellows

CHOI Eunsoo
Senior Curator, National Folk Museum of Korea
December 19, 2023 – March 14, 2024
Symbolic and Practical Applications of National Dyes in Korean
Life Events and Attire

HITCHCOCK, Robert K.
Professor, University of New Mexico
January 30 – February 29, 2024
Recent Trends of Hunter-Gatherer Studies

STRANG, Thomas John Kenneth
Honorary Researcher, Canadian Conservation Institute (Ret.)
October 1, 2023 – April 30, 2024
Rethinking Integrated Pest Management for Ethnological
Collections

YU Pei-Lin
Adjust Associate Professor, Boise State University
November 16, 2022 – May 15, 2023
The Study of the Subsistence and Landscapes of the
Austronesian Populations of East Asian Insular Areas from an
Evolutionary Perspective

Those who have been or will be in Minpaku in FY 2023.
(In alphabetical order.)

Research Fellow

MATSUMOTO Ayako
Investigations and research elucidating the theory and practice
of distribution and dissemination of research information using
cultural resources

Project Research Fellows

HASHIMOTO Sachi
Assistant work for the cultural resource planning project
“Research on the Preservation and Management of Tangible
Cultural Resources”

ISHIYAMA Shun
Research work for building a digital library of academic
knowledge

KAWAMURA Yukako
Assistant work for the cultural resource planning project
“Research on the Preservation and Management of Tangible
Cultural Resources”

KOBAYASHI Naoaki
Research work for building a digital library of academic
knowledge

Research Fellows,
NIHU Center for Innovative
Research

Global Area Studies Program Steering Unit

ITO Sanae
Project Assistant Professor

Global Mediterranean

OKAMOTO Naoko
Project Assistant Professor

Indian Ocean World Studies

MATSUI Azusa
Project Assistant Professor

Maritime Asian and Pacific Studies

MOMMA Ippei
Project Assistant Professor

East Eurasian Studies

AKAO Mitsuharu
Project Assistant Professor

Establishing Science for Universal
Communication (S_COM)

SAGARA Keiko
Project Assistant Professor

Liberal Arts Communicator

KAMINO Chie
Project Assistant Professor

“Digital Humanities” (DH) Projects

NAGAI Masakatsu
Project Professor

Projects of FY2022

In FY2022, the Center supported the promotion of 2 database establishment projects and 3 database improvement projects based on the project to build the “Info-Forum Museum for Cultural Resources of the World”, and also planned a special lecture “Ancestors Returning Case Studies, Cautionary Tales, and Best Practices from North America”. Concurrently, the Center assisted in the preparation and organization of the following exhibitions: special exhibitions (The 50th Anniversary of the Establishment of Diplomatic Relations between Japan and Mongolia “100 Years of Mongolia: Encounters through Photography” and “*Homō loquēns* ‘talking human’: Wonders of Language and Languages”), thematic exhibitions (“Slash-and-Burn Cultivation Viewed by SASAKI Komei: From Itsuki Mura to the World” and “Maritime People and Art of Their World : Material Culture in Southeast Asia and Oceania”), collection exhibition(“Cormorant Fishing in Contemporary China: Techniques of Fishers”), traveling exhibitions (“REGNUM IMAGINARIUM : Realm of the Marvelous and Uncanny: Kochi Prefectural Museum of History” and “Beads In the World: Ishikawa Nanao Art Museum” and “Beads In the World: The Shoto Museum of Art”). Additionally, the center conducted research to improve the joint use of academic resources.

Projects of FY2023 In FY 2023, we will mainly pursue three projects.

Research Promotion and Support for Info-Forum Archives of Human Culture Project

Since FY2022, this Museum has managed an Institution-based Transdisciplinary Project of the National Institutes for the Humanities, entitled “Sustainable development humanities research based on the Info-Forum archives of human culture.”

In 2023, we shall undertake the Basic Research Projects: “Materials on Indigenous Australians” and “Archive of Oceanian Materials” and Promotional Research Projects: “Digital Archive of Taiwanese Materials,” “Rice Crop Research Team’s Photographic Materials in Thailand,” and “Performing Arts Materials in Tokunoshima and Amami-Oshima islands.”

The Center studies standardization and multilingual translations of the artifacts and resources. It also supports the promotion of these projects through database building, editing and publication.

Research Promotion and Support for Special Exhibitions, Thematic Exhibitions,
Collection Exhibition and Traveling Exhibitions Project

The Museum implements Special Exhibitions, Thematic Exhibitions, Collection Exhibition and Traveling Exhibitions, in order to publish its cultural resources and related research outcomes. In FY 2023, the Museum will showcase: special exhibitions ““Arte Popular”: The Creative and Critical Power of Latin Americans” and “Divine Affection: Enchanting Images of Hindu Deities” and “Masks in the Performing Arts and Festivals of Japan”, thematic exhibitions “Screen Prints of Canada’s Northwest Coast Peoples” and “Conveying the Realities of the Minamata Disease”, collection exhibition “The Hunter's View of the Earth”, traveling exhibitions “REGNUM IMAGINARIUM : Realm of the Marvelous and Uncanny: Fukuoka City Museum” and ““UNIVERSAL MUSEUM”: Exploring the New Field of Tactile Sensation: the OHK Okayama Broadcasting Station at KURUN HALL”, cooperative exhibitions “Slash-and-Burn Culture in the Kyushu Mountains: Historia Terrace Itsukidani” among others. The Center will promote the research that will enable these exhibitions and assist in the running of the exhibitions.

Research for Improving the Shared Availability of Cultural Resources

In FY2023, we will research the ways to promote the interdisciplinary and international joint use of the cultural resources owned by this Museum, and effective ways to contribute to university education, academic research, dissemination of knowledge to the general public, and creation of cultures by their bearers.

Center for Academic Research Development

Object

The Center for Academic Research Development was establish in April 2017, and has assumed the research strategy functions that the Center for Research Development and the Center for International Academic Exchange formerly provided for: national and international shared use and joint research; enhancing infrastructure; and plan and oversee the national and international strategies for the shared use and joint research organizations pioneering new domains. The Center will reinforce the systematic research capabilities of each of our research departments and centers. More specifically, the Center engages in the activities required to promote internationally coordinated or joint research more strategically and systematically, including: improvement in the implementing organization of a research project based on shared use of resources; development, preparation and signing of (national and international) academic exchange agreements and the signing policies thereof; survey of overseas research trends; and information gathering and provision on external finances.

Institutional Research (IR)

Object

The Office of Institutional Research (IR) was established in April 2016 to support the Museum’s planning and decision-making by collecting and analyzing data on the Museum’s research and education and converting the compiled data and analysis results into reference materials.

To fulfill this purpose, the Office mainly does the following: (1) collects and publishes data on research and education; (2) analyzes the data and publishes the results; and (3) provides the data and analysis results for the Museum’s reforms and improvements.

As a member of the National Institutes for the Humanities, the Museum establishes midterm plans and fiscal year plans based on six-year midterm goals set by the Ministry of Education, Culture, Sports, Science and Technology. The Museum also receives evaluations of its research and education from the National University Corporation Evaluation Committee. In addition, the Museum conducts self-inspections and self-evaluations and publishes the findings in a report. The Office of IR collects and analyzes a wide range of data on research and education for these inspections and evaluations.

Minpaku Special Research Projects

Minpaku Special Research Projects is a research program organized independently by the National Museum of Ethnology, collaborating with universities and other research institutes in Japan and overseas. Based on domestic and international academic research trends and social demands, Minpaku Special Research Projects aims to create new academic fields by enhancing interdisciplinary research. During the six years of the third mid-term goals period, starting in FY2016, we adopted the umbrella theme of "Contemporary Civilization and the Future of Humanity: Environment, Culture, and Humans." For this, we undertook solution-focused approaches to tackle urgent challenges facing our contemporary civilization.

During the six years of the fourth mid-term goals period beginning in FY2022, five research projects will be conducted under the umbrella theme of "Ethnic Groups and Ethnicity in the Post-Nationalist Era." The research adopts a holistic perspective to the processes of the reconfiguration of ethnic groups and ethnicity in the post-nationalist era. This perspective will include culture, politics, religion, society, environment, and history. In this way, we aim to present new approaches that will contribute to the realization of a diverse and inclusive society where all people respect each other and live together regardless of cultural differences.

List of Minpaku Special Research Projects FY2016 - FY2021

Umbrella Theme “Contemporary Civilization and the Future of Humanity: Environment, Culture and Humans”

Theme Category: Environment

Project Leader	Project Title	Category	Project Period
IKEYA Kazunobu KISHIGAMI Nobuhiro	Historical Ecology of Biocultural Diversity: Use and Conservation of Endangered Animals, Plants, and Habitats	① Environmental issues and biodiversity	July 2016 - March 2019
NOBAYASHI Atsushi	Human and Natural History on System of Food Production	② Food issues and eco-systems	April 2017 - March 2020

Theme Category: Culture

Project Leader	Project Title	Category	Project Period
NISHIO Tetsuo	Global Area Studies: Towards a New Epistemology for Mapping the Globalising World	③ Cultural conflicts and plural values	April 2020 - March 2023
IIDA Taku	Humanity and Communities in Cultural Heritage in the Age of Digital Technology	④ Cultural heritages and communities	April 2019 - March 2022

Theme Category: Humans

Project Leader	Project Title	Category	Project Period
TERADA Yoshitaka FUKUOKA Shota	Performing Arts and Conviviality	⑤ Minorities and coexistence	April 2018 - March 2023
MORI Akiko	Family Potential in Uncertain Times: Mobility, Technology and Body	⑥ Population issues and family/society	April 2021 - March 2024

Special Theme Category

Project Leader	Project Title	Category	Project Period
SHIMAMURA Ippei	A Comparative Studies on the Cultural Immune Systems against Covid-19	Modern Civilization and Infectious Diseases	December 2020 – March 2024

List of Minpaku Special Research Projects FY2022 - FY2027

Umbrella Theme “Ethnic Groups and Ethnicity in the Post-Nationalist Era”

Project Leader	Project Title	Category	Project Period
SUZUKI Motoi	Challenges for Museums in the Era of Post-nationalism—Methods of Exhibiting Minority and Indigenous Cultures	Ethnicity and Museums	April 2022 - March 2025
NOBAYASHI Atsushi	Understanding Conflicts Involving the Wills and Intentions of Individuals, Affiliate Groups, and the Nation-State, and the Realization of a Nation-State Comprising Diverse Ethnic and Cultural Group	Ethnicity and the Nation-State	April 2023 - March 2026
MATSUO Mizuho	The Politics of Roots and the Arts/Techniques of Coexistence—Ethnicity and Histories in the Post-Nation-State Era	Ethnicity and History	April 2024 - March 2027
NARA Masashi	Ethnicities and Religions—The Entanglements of Exclusivity and Inclusivity	Ethnicity and Religion	April 2025 - March 2028
NIWA Norio	Political Violence, Conflict, and Ethnicity	Ethnicity and Violence	April 2026 - March 2029

Projects in FY2022

Project Leader	Project Title
FUKUOKA Shota	Performing Arts and Conviviality
NISHIO Tetsuo	Global Area Studies: Towards a New Epistemology for Mapping the Globalizing World
SHIMAMURA Ippei	A Comparative Studies on the Cultural Immune Systems against Covid-19
MORI Akiko	Family Potential in Uncertain Times: Mobility, Technology, and Body
SUZUKI Motoi	Challenges for Museums in the Era of Post-nationalism—Methods of Exhibiting Minority and Indigenous Cultures

Public Lecture

“Reconsidering ‘Minzoku’ in Japan and Taiwan”

Date November 11, 2022
Coordinator HIRAI Kyonosuke
The total number of participants 582

International Symposium

The International Symposium of Minpaku Special Project

“Coping with COVID-19: A Comparative Study on Cultural Immune Systems”

Date March 4 – March 5, 2023
Coordinator SHIMAMURA Ippei
The total number of participants 70

The International Symposium of Minpaku Special Project

“Global Area Studies: Towards a New Epistemology for Mapping the Globalizing World”

Date March 11 – March 12, 2023
Coordinator NISHIO Tetsuo
The total number of participants 85

The International Symposium of Minpaku Special Project

“Family Potential in Uncertain Times”

Date March 14 – March 16, 2023
Coordinator MORI Akiko
The total number of participants 44

Symposium

Symposium “Re-evaluating Umesao’s Theory of the Eco-Historical Perspective for Civilizations:
Toward a New Epistemology for Mapping the Globalizing World”

Date April 25, 2022
Coordinator NISHIO Tetsuo
The total number of participants 166

EXPO Park Symposium 2022, related to Minpaku Special Research Project
‘A Comparative Studies on the Cultural Immune Systems against Covid-19’
“Quo Vadis, Homini?: Predicting the Post-COVID-19 World”

Date October 29, 2022
Coordinator SHIMAMURA Ippei
The total number of participants 157

Online Meeting

Online Meeting of Minpaku Special Research Project

“Performing Arts and Conviviality”

Date March 22, 2021 – May 22, 2022 (Seven times) (online)
Coordinator FUKUOKA Shota
The total number of participants 166



Sustainable Development Humanities Research Based on the Info-Forum Archives of Human Culture (Instituted Project of the National Institutes for the Humanities Transdisciplinary Projects) FY2023

An institution-based research initiative, designated as “Sustainable development humanities research based on the Info-Forum archives of human culture,” is aimed at compiling multilingual “archives of human culture.” This broadly disseminates more than a million of the Museum’s academic resources for online public access, by promoting international collaborative research between researcher communities and indigenous communities, known as the bearers of culture. The archives presumably form a core for educational and research activities, that enable the inheritance of academic resources in anthropology, ethnology, and their related fields, as common international properties.

In 2022, the first year of research, we implemented five projects: two Basic Research Projects and three Promotional Research Projects. In addition, *Collections Review on 26 Silverworks Labeled “Hopi” in the National Museum of Natural History (Smithsonian Institution): Reconnecting Source Communities with Museum Collections 10* was compiled as a publication of the results of the international dissemination program to promote the internationalization of research. This is one of the instituted projects of the NIHU Transdisciplinary Project.

Project under Promotion:

1. Basic Research

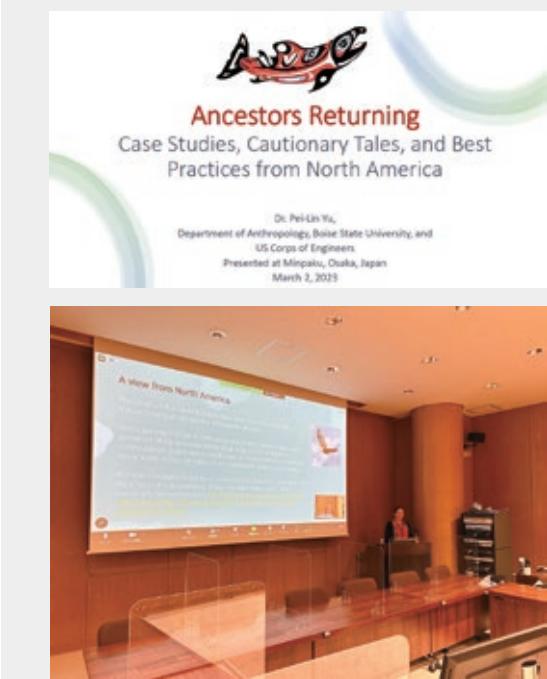
Basic research specifically examines compilation of the archives, that focuses on the Museum’s cultural resources of artifacts, photographs, videos, and bibliographical materials, as well as related academic materials, with the consistent promotion of collaborative research using archives.

2. Promotional Research

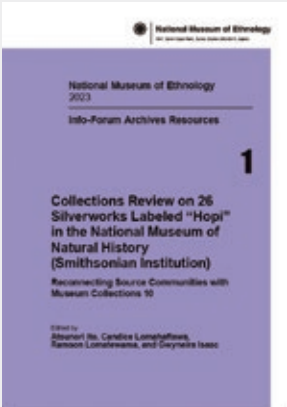
Promotional research advertises the dissemination of results through international collaborative research, international symposia, and exhibitions, based on a novel database created using existing databases and platforms, and on the compilation of new archives.

Projects of Sustainable Development Humanities Research Based on the Info-Forum Archives of Human Culture

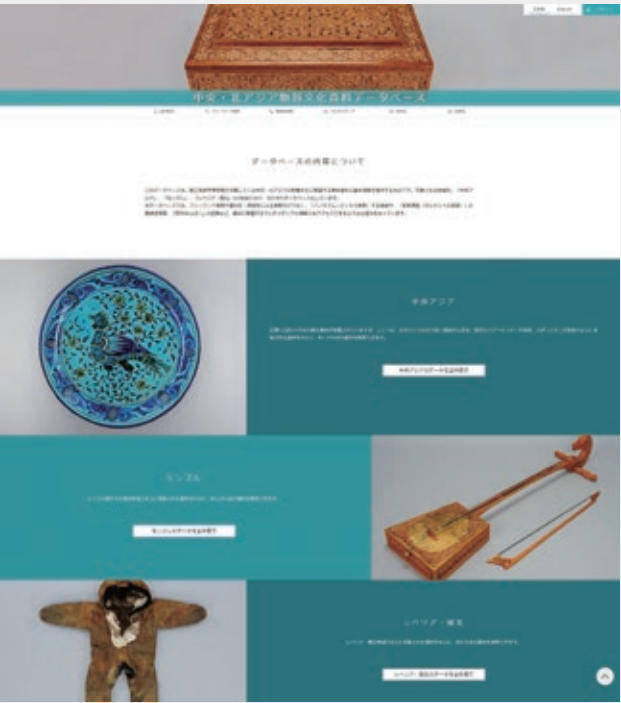
Project Leader	Project Title	Category	Period
HIRANO Chikako	A Study of the Material Culture of Aboriginal Australians, with a Focus on the Minpaku Collection	Basic research	April 2022 - March 2026
NIWA Norio	Building of a Comprehensive Archive on Pacific Collection by Japanese	Basic research	April 2022 - March 2026
SASAHARA Ryoji	Research based on Info-Forum Museum of Folk Performing Arts in Tokunoshima and Amamioshima and Production and Release of Multimedia Contents and Exhibitions	Promotional research	April 2022 - March 2024
HIRAI Kyonosuke	Construction of Archives of the First Synthetic Research of the Culture of Rice-Cultivating Peoples in Southeast Asian Countries: Focusing on Photographs of Thailand	Promotional research	April 2022 - March 2024
NOBAYASHI Atsushi	Building an Integrated Digital Archive of Taiwan Studies	Promotional research	April 2022 - March 2024
FUKUOKA Shota	Traditional Music on Early Records in Twentieth Century East Asia	Promotional research	April 2023 - March 2025
YAGI Yuriko	Construction and Utilization of Digital Archives on Peruvian Cultural Collection	Promotional research	April 2023 - March 2025



March 24, 2023, overseas visiting fellow YU Pei-Lin delivered a special lecture. She explained practical research related to indigenous people and museums in North America.



Printed publication of outcomes by the international transmission program



An example of databases available on the Minpaku website



Inter-University Research Projects

These projects are conducted jointly by scholars of the Museum and outside organizations.
In FY2022, projects were jointly undertaken by the Museum scholars and 130 scholars from national universities, 21 scholars from prefectural and municipal universities, 154 scholars from private universities, and 75 experts from other organizations.

FY2023 Research Theme

○ Projects undertaken outside Minpaku

General Research

Coordinator	Research Theme	Research Period
Project 1: New field development		
○ KATAOKA Tatsuki	Toward a New Perspective for Japan Studies Reflecting Overseas Field Experiences	2020.10 – 2024.3
○ YAMAGUCHI Mikako	The Anthropology of the “Depicted Animals”: Focusing on the Becoming in Animals and Humans	2020.10 – 2024.3
○ SHINMOTO Mariko	Comparative Study on the Influence of International Development on Menstruation: From the Perspective of Gender and Medicalization	2020.10 – 2024.3
KISHIGAMI Nobuhiro	Interdisciplinary Comparison of Historical Change, Current of State, and Future of Indigenous Societies along the North Pacific Rim: From a Perspective of Human History	2020.10 – 2024.3
MORI Akiko	Exploring an Alternative Notion of Community in Uncertain Times: Contingent Arrangement of Material, Institutional, and Body Settings	2020.10 – 2024.3
UDAGAWA Taeko	A Study on the Transformation of Food/Foodways Related to Wars and Imperialism: Rethinking the Relationship between Food/Foodways and the Nations	2020.10 – 2024.3
○ SHIRAI Chiaki	Interdisciplinary Study on Reproductive Technology and Childrearing in Modern Asia	2021.10 – 2024.3
○ DOI Kiyomi	Reorientation of Uncertainty in Tourism	2021.10 – 2024.3
TAKEZAWA Shoichiro	The Anthropology of Vulnerability	2021.10 – 2024.3
○ YAMANOUCHI Yuriko	A Comparative Ethnography of Belonging and Difference in Mixed Heritage Peoples: Cases from Indigenous Peoples in Oceania	2022.10 – 2025.3
NAKAGAWA Osamu	Connecting Diverse Logics in Global Capitalism: An Interdisciplinary Approach	2022.10 – 2025.3
IKEYA Kazunobu	Migrations and Livelihoods of Asian Hunter-Gatherers: Diversity of Environmental Adaptations in Human History	2022.10 – 2025.3
○ IWATANI Hirofumi	A Methodological Reflection for the Practice of Photo-Ethnography	2023.10 – 2026.3
Project 2: Sharing of academic resources		
○ UEMURA Yukio	Reconstruction and Revitalization of Japanese Folk Music through Utilizing the Toyo Ongaku Gakkai Sound Archives Preserved in the National Museum of Ethnology	2021.10 – 2024.3
NIWA Norio	A Study on the Formation and Use of Pacific Ethnographic Collections by the Japanese: Focusing on the Toshio Asaeda Collection of the National Museum of Ethnology	2021.10 – 2024.3
○ OCHIAI Yukino	Research on Historical Changes in Forest Resources and Their Uses Based on the Analysis of National Museum of Ethnology Collection: Focusing on the Wood Materials of Tubs and Barrels	2022.10 – 2025.3
IIDA Taku	Museum Collections and Material Culture Studies: Fifty Years of Minpaku	2023.10 – 2026.3

Young Researchers

Coordinator	Research Theme	Research Period
Project 1: New field development		
○ MIYASAKA Shinji	A Project to Touch the Shapes of Tradition by Combining 3D Printing with Traditional Materials and Techniques	2021.10 – 2024.3
○ NAKAO Seiji	How African Narrated “African History”: “African Historiographies” from Local Histories in Africa	2023.10 – 2026.3

Public Presentation of Joint Research Results

Since FY2004, some of the Joint Research Project meetings have been made open to the general public.
In FY2022 the following projects were hosted.

Date	Title	Venue
October 29-30, 2022	Interdisciplinary Comparison of Historical Change, Current of State, and Future of Indigenous Societies along the North Pacific Rim: From a Perspective of Human History	68

Visiting Researchers FY2022

As an Inter-University Research Institute, the Museum accepts researchers, young doctoral graduates, and doctoral students from domestic and overseas academic and research institutions who wish to conduct research activities at the Museum as Visiting Researchers for a certain period of time. Instructors at the Museum are assigned to host such researchers and graduates. Visiting Researchers who meet certain conditions are permitted to apply for Grants-in-Aid for Scientific Research as project coordinators at the Museum. In FY2022, we accepted a total of 97 researchers, including 35 who were non-Japanese from 15 countries and regions.

Visiting Graduate Student Program FY2022

The Museum, as an Inter-University Research Institute, accepts students who are enrolled in doctoral courses at Japanese national, public, and private universities. Upon request from their universities, these students may be accepted as Visiting Graduate Student in order to provide them with research guidance on specific themes for a fixed period of time. Visiting Graduate Students can pursue their research under the guidance of Museum scholars, use the facilities, and attend classes at the Anthropological Studies, Graduate Institute for Advanced Studies, SOKENDAI established at the Museum. In FY2022, we accepted one student from national university, and two from private universities.

JSPS Grants-in-Aid for Scientific Research

Grants-in-Aid for Scientific Research provided by the Japan Society for the Promotion of Science are intended to foster the progress of unique and pioneering research projects in all fields ranging from the human and social sciences to the natural sciences, in order to promote academic activities in our country. The aid is awarded to research projects which are especially important in terms of current academic trends, organized on the initiative of individual researchers or research groups in academic institutions.

FY2023 Projects Funded

Category	Head	Research Subject	(Thousands of yen)
----------	------	------------------	--------------------

Fund for the Promotion of Joint International Research (Fostering Joint International Research(B))

Continued	KIKUSAWA Ritsuko	Integrating Language Change in Time and Space: Applying Geographical Information System (GIS) and Statistic Modelling to Historical Linguistics	2,080
Continued	YOSHIDA Kenji	Innovation in the Study of the Arts in Anthropology: Creating a Platform for International Research in the Anthropology of Images	4,810
Continued	NAGANO Yasuhiko	The “Objects” and Their Sacred Power in the Religions of Tibet -- an International Collaborative Survey	4,420

Total
11,310

Fund for the Promotion of Joint International Research (Fostering Joint International Research(A))

Continued	ICHINO Shinichiro	Formation Mechanism of Southern Madagascar's Tamarind Forest: A Comparative Study of Local Ecological Histories	12,220
-----------	-------------------	---	--------

Total
12,220

Grant-in-Aid for Scientific Research (A)

Continued	KISHIGAMI Nobuhiro	A Comparative Study of Emergence, Current Status and Future of Indigenous Cultures in Alaska and Northwest Coast Regions of North America	8,840
Continued	SEKI Yuji	Reinventing the Study of Andean Civilization through Analysis of Social Memory	10,920
Continued	ONO Rintaro	Migration and Island Adaptation of Homo Sapiens in Maritime Asia	9,230
Continued	NOBAYASHI Atsushi	Exploring an Indigenous Society in Early Colonial Taiwan by Joining Ethnographic Archives and Field Research	7,800

Total
36,790

Grant-in-Aid for Scientific Research (B)

Continued	UEBA Yoko	An Anthropological Study on Basketry from the Perspective of Plant Ecology and Craft Skills	3,380
Continued	MATSUMOTO Yuichi	Reconsidering the Chavin Problem: Interdisciplinary Studies on the Emergence of Early Complex Societies in the Andes	3,900
Continued	UDA Shuhei	Elucidation of Cormorant Fishing as Cultural System and Co-Creation of Optimal Inheritance Route in the Era of Animal Welfare.	1,430
Continued	SAITO Akira	A Digital Humanities Approach to the Tasas: Spanish Colonial Rule and Native Andean Society	2,210
Continued	SONODA Naoko	A New Technique for Extending the Life Span of Degrading Acidic Papers	3,380
Continued	YOSHIDA Kenji	Anthropological Study of Immurgence of Culture in the Midst of Social Crisis in Africa	3,770
Continued	TAKEZAWA Shoichiro	The Anthropology of Vulnerability: How Can We Talk about People Vulnerable to Sufferings	4,030
Continued	SUZUKI Motoi	Anthropological Study of Latin American “Arte Popular”	4,290
Continued	HIDAKA Shingo	Developing of a Universal Exhibition Guidance System in the Post-Corona Society	4,550
Continued	DEGUCHI Masayuki	The Interdisciplinary Researches between Museology and Accounting on the Paradox of Preservation and Measurement of Cultural Heritage	3,380
New	YOSHIOKA Noboru	A descriptive study on the Domaaki language	1,950
New	TERAMURA Hirofumi	Archaeological Research on the Spread of Religion and Its Acceptance and Transformation in Silk Road Cities	7,020
New	SUEMORI Kaoru	Reproduction and Cognition of Polychromatic Visual Arts in Crepuscular Religious Spaces	7,930

Total
51,220

Grant-in-Aid for Scientific Research (C)

Continued	OKAMOTO Naoko	Research about the Writing Process of J.-C. Mardrus by Analysis of One of His Unpublished Manuscripts	780
Continued	SUZUKI Hideaki	Historical Ethnography on Slavery in the Early 20th Century Persian Gulf	780
Continued	OTA Shimpei	Ethnographic and Statistic Approaches to Work Ethic and Motivation of Museum Employees	910
Continued	MORI Akiko	An Ethnographic Study of Neighborhood Seen from the Practice of Care in Berlin	1,040
Continued	OKADA Emi	Traditional Polyphony and Singing Culture in Northeast India	1,040
Continued	NAGAI Masakatsu	Linguistic Description that Reflects Regional Differences and IIf Search Platform Construction for Ancient Egyptian Hieratic Manuscripts	1,170
Continued	SASAHARA Ryoji	Research on the Formation of Migrant Societies and the Tradition of Festivals and Performing Arts on the Islands of Japan since the Meiji Era	1,170
Continued	KURODA Kenji	Global Scale of Industrial Production and Economic Integration between Modern Japan and the Middle East	910
Continued	NISHIO Tetsuo	Studies on the Intellectual Milieu of Antoine Galland and His Creative Contribution to the Arabian Nights	1,040
Continued	KAWANISHI Eriko	A Study of the Practice of Mediumship and its Transformation in Contemporary England	1,950
New	HIRAI Kyonosuke	An Ethnographical Study of the Formation, Use and Agency of the Minamata Disease Movement’s Archives	1,040
New	NAKAGAWA Osamu	Anthropological Study of the Zucchini Supply Chain	1,300

Total
13,130

Category	Head	Research Subject	(Thousands of yen)
----------	------	------------------	--------------------

Grant-in-Aid for Young Scientists

Continued	YAGI Yuriko	A Study on Devotion and Religiosity of Andean People: Focus on Votive Offering and Church Documents	520
Continued	KUDO Yumi	Anthropological Study on Ethno-Medical Practices among Mapuche Organizations in Chile	910
Continued	ITO Satoru	Poetic Orality and Everyday Aesthetics: Comparative Study of Oral and Literal Culture in Tai Cultural Area	780
Continued	HISAOKA Kae	Collective Identity and Gender Perspectives in Songs and Dances of the Adyghe People: Through the Comparison with Georgia	910
Continued	HIRANO Chikako	Anthropological Study on the Occurrence and Avoidance of Drinking Trouble in an Australian Nomadic Society	1,430
New	MIYAMAE Chisako	The Succession of Beauty in Practical Crafts: Development Archiving and Exhibition Methods in Design Museums	390
New	SATO Minako	Non-Formal Education Research in the Multilingual Kingdom of Bhutan	1,170

Total
6,110

Grant-in-Aid for Challenging Research (Pioneering)

Continued	ITO Atsunori	Museum Anthropological Approach to Develop a Source Community Friendly Public Transmission Model on Digital Image of the “Copyrighted” Ethnographic Collection	5,720
-----------	--------------	--	-------

Total
5,720

Grant-in-Aid for Challenging Research (Exploratory)

Continued	KIKUSAWA Ritsuko	Language Change and Social Norms Reanalyzed through Human Biology	910
New	TERWAMURA Hirofumi	Research on Food Culture in Ancient Oasis Cities Using Scientific Methods	2,730

Total
3,640

Grant-in-Aid for Research Activity start-up

Continued	MATSUI Azusa	Anthropological Study on Ethics in Not Being Too Responsible: A Case of Neighborhood Relationships in Mozambique Island	1,430
Continued	SATO Minako	A Study on “Storytelling” as a Method of Adult Literacy Education in Bhutan, a Multilingual Society	1,430

Total
2,860

Grant-in-Aid for Publication of Scientific Research Results

New	SAGARA Keiko	A Historical Study of Japanese Sign Language: Comparing Numerals and Kinship Terms with Related Taiwan Sign Language and South Korean Sign Language	1,500
-----	--------------	---	-------

Total
1,500

Grant-in-Aid for JSPS Fellows

Continued	NAKAO Yukie	Global Care Network for the Disabled: A Case Study of South Asian Organizations in Tanzania	1,690
Continued	FUKAMI Kikue	An Ethnographical Analysis of The Relationship between Parents in American Polyfamilies	910
Continued	ITO Sanae	The Connections between Memorization of the Earthquakes and Disaster Prevention in Nepal	1,430
Continued	ONO Rintaro BOULANGER Clara	Development of New Fish Bone Analysis - Prehistoric Fishing in Ryukyu and Island Southeast Asia	200

Total
4,230

*Fund for the Promotion of Joint International Research (Fostering Joint International Research(A)) was allowed between FY2022 to FY2024

Research Donations FY2022

Name of the Donation (Reseach Grants for Art-Related Studies)	Head	Donor	(Thousands of yen)
K.Matsushita Foundation (Research Grant)	MIYAMOTO Kana	MIYAMOTO Kana	500
Uminomanabi Museum Support from the Museum of Maritime Science	ONO Rintaro	The Japan Maritime Science Foundation	2,000
The Japan Science Society (The Sasakawa Scientific Research Grant)	KAMIMURA Chiharu	KAMIMURA Tomoharu	650
Japanese Society of Cultural Anthropology (Uematsu East Asian Research Fund Promotion Project)	ZHANG Shijun	Japanese Society of Cultural Anthropology	1,200
Donation of Shung-Ye Museum of Formosan Aborigines	NOBAYASHI Atsushi	Shung-Ye Museum of Formosan Aborigines	1,150
The Chiang Ching-kuo Fundation for International Scholarly Exchange (Conference and Seminar Grants)	NARA Masashi	The Chiang Ching-kuo Fundation for International Scholarly Exchange Dr.Yun-han Chu (President)	2,157
Research Grant	SHIMAMURA Ippei	Honorary Consulate of Mongolia in Tokushima	2,000
Research Grant	NOBUTA Toshihiro	KANAMORI Yoshiko	20,000
Research Grant	SEKI Yuji	TAKAHASHI Katsuhiko	500
Total			30,157

Projects Concerning Cultural Resources and Information

Cultural Resource Projects/Information Projects

“Cultural Resource Projects/Information Projects” are based on proposals, and led by our full-time research staff. The aim is to organize and digitize cultural resources held by the Museum and related organizations such as universities, in order to promote their shared use and academic value. The “Cultural Resource Projects” are undertaken in the four areas of survey and collection, artifact management, exhibition, and museum-community alliance. The “Information Projects” are undertaken in the two areas of “video production and information gathering” and “digitization”.

FY2023 List of Cultural Resource Projects

Area	Proposed by	Project Name
Survey and Collection Project	KAWASE Itsushi	Collection of Materials Related with Musical Practices by Singer-Poets
Survey and Collection Project	SASAHARA Ryoji	Collection of “Kamidira”, Performing Arts Masks Performed at Harvest Festivals in the Amami region
Exhibition Development Project	SUZUKI Motoi	Special Exhibition “‘Arte Popular’: The Creative and Critical Power of Latin Americans”
Exhibition Development Project	MIO Minoru	Special Exhibition “Divine Affection: Enchanting Images of Hindu Deities”
Exhibition Development Project	SASAHARA Ryoji	Special Exhibition “Masks in the Performing Arts and Festivals of Japan”
Exhibition Development Project	KISHIGAMI Nobuhiro	Thematic Exhibition “Screen Prints of Canada’s Northwest Coast Peoples”
Exhibition Development Project	HIRAI Kyonosuke	Thematic Exhibition “Conveying the Realities of the Minamata Disease”
Exhibition Development Project	YAMANAKA Yuriko	Traveling Exhibition “REGNUM IMAGINARIUM: Realm of the Marvelous and Uncanny”(Fukuoka City Museum)
Exhibition Development Project	HIROSE Koujirou	Traveling Exhibition “‘UNIVERSAL MUSEUM’: Exploring the New Field of Tactile Sensation” (the OHK Okayama Broadcasting Station at KURUN HALL)
Exhibition Development Project	HIROSE Koujirou	Travelling Exhibition “‘Universal Museum’: Exploring the New Field of Tactile Sensation” (Nogata Tanio Art Museum)
Exhibition Development Project	IKEYA Kazunobu	Cooperative Exhibition “Slash-and-Burn Culture in the Kyushu Mountains”
Exhibition Development Project	YAMANAKA Yuriko	International Collaborative Exhibition “REGNUM IMAGINARIUM: Realm of the Marvelous and Uncanny”(China tour)
Exhibition Development Project	KAWASE Itsushi	Preliminary Research for the Special Exhibition “The World of Singer Poets” (temporary title)
Exhibition Development Project	NARA Masashi	Preparation for the Thematic Exhibition “the Hakkas and Japan” (temporary title)
Exhibition Development Project	AISHIMA Hatsuki	Preparation for the Thematic Exhibition “Arabic Calligraphy at the Crossroads of Japan, Europe and the Middle East” (temporary title)
Museum Community Alliance Project	KIKUSAWA Ritsuko	Preparing an Online Version of the 2022 Fall Special Exhibition “ <i>Homō loquēns</i> ‘talking human’: Wonders of Language and Languages”

FY2023 List of Information Projects

Area	Proposed by	Project Name
Video Production and Information Gathering Project	MIO Minoru	Recording videos on Gangaur Festival in Rajasthan, India
Video Production and Information Gathering Project	OKADA Emi	Production of the Visual Ethnography on “Songs of Bengal: ‘The Road to Baul’ ‘The Return of Pata paintings’”
Digitization Project	IKEYA Kazunobu	Creating a Database on Photographs of Japanese Mountain Village Culture by Fukui Katsuyoshi

Cultural Resource Planning Projects/Information Planning Projects

“Cultural Resource Planning Projects/Information Planning Projects” are implemented continuously, or in a planned manner, to strengthen the Museum’s jointly used infrastructure. The “Cultural Resource Planning Projects” are undertaken in the three areas of artifact-related, exhibition, and museum-community alliance. The “Information Planning Projects” are undertaken in the two areas of video record production and digitization of exhibitions.

FY2023 List of Cultural Resource Planning Projects

Area	Implementation Manager	Project Name
Artifact Project	HIDAKA Shingo	Taking Pictures of Materials
Artifact Project	The Head of the Information Planning Section	Research Data Organization/Information Conversion and Usage Management
Artifact Project	HIDAKA Shingo	Research Data Organization/Information Conversion and Usage Management
Artifact Project	SONODA Naoko	Research on the Preservation and Management of Tangible Cultural Resources
Artifact Project	HIDAKA Shingo	Collection of Artifacts (Individual Collection)
Artifact Project	HIDAKA Shingo	Collection of Artifacts (Thematic Collection)
Exhibition Development Project	IKEYA Kazunobu	Collection Exhibition “The Hunter’s View of the Earth”
Museum Community Alliance Project	UEBA Yoko	Support for Volunteer Activities
Museum Community Alliance Project	UEBA Yoko	Workshop Hosting and Worksheet Exercises
Museum Community Alliance Project	FUKUOKA Shota	Music Day at Minpaku 2023
Museum Community Alliance Project	SAITO Reiko	<i>Kamuynomi</i> Rite, Traditional Ainu Dances
Museum Community Alliance Project	UEBA Yoko	Revision of the Min-pack “Seoul Children After-school”
Museum Community Alliance Project	UEBA Yoko	Revision of the Min-pack “Islam and Life in the Arab World”
Museum Community Alliance Project	OKADA Emi	The Project for Building up Partnership between the Museum and Society
Museum Community Alliance Project	NOBUTA Toshihiro	Practical Study on Using the Museum for People with Intellectual Disabilities “Minpaku <i>Sama-Sama</i> School”

FY2023 List of Information Planning Projects

Area	Implementing Entity	Project Name
Video Production by Subject	KAWASE Itsushi	Production of a Minpaku Visual Ethnography “Musical and Religious Practices by Ethiopian Immigrants in Japan”
Video Production by Subject	FUKUOKA Shota	Production of a Minpaku Visual Ethnography “Javanese Musicians in Japan ”
Project for Video Production	Committee for Information Management	Making Panoramic Virtual Tours of Special Exhibitions, Thematic Exhibitions and Collection Exhibitions
Project for Video Production	Committee for Information Management	Making Videos of Special Lectures and Performances
Project for Donation Acceptance	Committee for Information Management	Donation Acceptance of Audio-Visual Materials and Research Archive Materials

The Fourth Term The National Institutes for the Humanities (NIHU) Transdisciplinary Projects

The National Institutes for the Humanities (NIHU) will implement “transdisciplinary projects” spanning six years commencing from FY2022 as fundamental and interdisciplinary research on human cultures, which forms the basis of NIHU. This will lead to functional enhancement to fulfill its mission as an inter-university research institute by expanding academic networks and by creating new fields.

Multidisciplinary Collaborative Projects: Interdisciplinary and Integrated Studies on Local Cultures: Aiming for the Emergence of Novel Communities

Minpaku Unit “Building Effective Utilization Models of Local Cultures” Project Director: HIDAKA Shingo

The sustainability and diversity of local cultures are currently critical in the Japanese Islands, due to frequent natural disasters and the transformation of local communities. Furthermore, the COVID-19 pandemic since 2020 has motivated efforts to establish a society that incorporates new lifestyles. Such circumstances suggest the urgent need for an unprecedented new society.

In a society to be newly created, a real sense of richness that has persistence and diversity that are adaptive to natural disasters and social change is lacking. This hindrance is eliminated through the incorporation of local cultures, with derived and inherited local wisdom and history, cultivated traditionally through daily activities.

Therefore, this study carefully investigated the local Japanese and Taiwanese museums’ activities based on the worldwide inheritance of local cultures, by developing an effective model using these cultures.



Restoration of local traditional cultural assets damaged in natural disasters

Network-based Projects: NIHU Global Area Studies Program

Global Area Studies Program Steering Unit Project Director: MIO Minoru

Conventional regional studies focusing on the essential nature and structure of a certain geographical region is no longer valid in contemporary world where globalization and borderlessness are advancing rapidly in various aspects such as politics, economy, society, and culture. At the same time, new form of nationalism and/or re-creation of the uniqueness of certain region are also arising in many places, and these phenomena has in turn had a great impact on the trajectory of globalization.

In order to keep up with these profound changes, it is indispensable to create a new form of area studies to elucidate the mutual dynamic relationship between the ‘global’ and the ‘areas’. Against these backgrounds, National Institute Humanities (NIHU) has launched a new area studies program, “Global Area Studies Program”, to clarify the mechanism of construction (or its failure) of global order from the perspective of comparison and relevance of regions. We will also seek for new concepts of areas appropriate for the globalizing post-post-colonial age under this program.

For this goal, under steering unit of the Global Area Studies Program, we have set up following four network-based area studies projects. The four research projects will elucidate factors of long-term sustainability and contemporary developments of each area. At the same time, in collaboration with the steering unit of the Program, they will explicate various aspects of relationships among these areas based on movements and exchanges of people, goods, information, and values.

The four centers established in the National Museum of Ethnology are promoting these area studies projects as a core or a sub-core center of each network.

Center of the Global Mediterranean at the National Museum of Ethnology (The core center of the project)

Project Leader: NISHIO Tetsuo

This project’s research has been conducted mainly by the National Museum of Ethnology, in cooperation with three other Japanese bases. This method has two main purposes. The first is deconstruction of an existing area studies framework that divides countries surrounding the Mediterranean Sea into “Europe” in the north, and the “Middle East and North Africa” in the south, comprehensively exploring approaches which elucidate their historical and cultural relations as the “Mediterranean Area.” The second is to pursue joint research exploring the migration of people, goods, and knowledge on a global scale, stretching across the American continent in the west, East Africa and the Indian Ocean in the south, and Central Asia in the east, through the Mediterranean Sea after the Age of Discovery, by applying literature, history, and cultural anthropology as the main approaches along with mutual cooperation. We aim to establish new area studies, by invoking and considering a supra-regional and interdisciplinary approach.

The purpose of the National Museum of Ethnology Base is to consider the opportunities and mechanisms that cut off a specific space and re-designate it as an “area,” due to the migration of people and goods. The development of science and technology since the 17th century, the mobility of people, goods, and information has improved remarkably, leading to the onset of globalization. Although research in the fields of cultural anthropology and history investigating immigration and trade has accumulated, the role of movement in forming an area has not been adequately examined. By comprehensively elucidating mobility by land, sea, and air, we seek a methodology that dynamically grasps the phases in which time and space are regionalized.

Center of the Indian Ocean World Studies at the National Museum of Ethnology (The core center of the project)

Project Leader: MIO Minoru

This area includes the east coast of Africa, the southern Middle East, the Indian subcontinent, and the western part of Southeast Asia, as well as the Indian Ocean itself which connects these regions, and the islands scattered in the ocean. This area has become a field of complex intersection of great civilizations and environments unparalleled in other parts of the world, where the Islamic, the Indic, and the modern Western civilizations have been intertwined for more than 500 years on the basis of tropical or sub-tropical ecology and subsistence systems which are different from those of temperate zone. The mobility of people, goods, and values since ancient times is still dynamic and quite active, even though the paths of these flows have always been changing responding to various constraints. At the same time, this area has become one of the hotspots of modern international politics, along with rising of new regional powers such as China and India.

While keeping in mind the long-term sustainability and changes of this region, Indian Ocean World Studies project will grasp dynamism of various actors’ flows, including natural environment, people, goods, values etc. At the same time, we will elucidate interdisciplinarily how people in this area have developed their own ways of ecological living and wisdoms of co-existence of different values. Specifically, the following four themes have been set for the project: 1) linkage and continuity of movement; 2) hybridity and creativity in literature and ideas; 3) development, medicine, and environment; and 4) peaceful coexistence. The four project centers, including the core-center at the National Museum of Ethnology, carry out its own research focusing one of the themes.

The theme for the center at the National Museum of Ethnology is the elucidation of “the linkage and continuity of movement.” Various flows of people, goods, information, money, and values of the Indian Ocean World are intrinsically expandable beyond any certain geographical boundary, making this world always porous. At the same time, these flows have not always been unidirectional and diffusional, but have moved circular ways. We define these phenomena as “cultural gyres”, and assume that overlapping and entangling trajectories of cultural gyres have shaped, sustained, and transformed the Indian Ocean World over 2000 years. Our aim is to grasp exact trajectories of these flows, and transformation in various levels (individual, local, regional culture and society) incurred by these flows through collaboration of anthropological field studies and historical research in this world.

Center of the Maritime Asian and Pacific Studies at the National Museum of Ethnology (The core center of the project) Project Leader: ONO Rintaro

This project has been promoted through a network of four bases, centered on the National Museum of Ethnology Base. The project aims to promote new area studies, that simultaneously address multiple areas of East Asia, Southeast Asia, and Oceania. It solely emphasizes on the perspective of sea areas, without focusing on area studies divided by the conventional concept of areas such as states based on land areas or East Asia, Southeast Asia, and Oceania. The common purpose of exploring island environments in the maritime world, and the transformation dynamics between culture and society was achieved by recognizing the presence of fundamental cultural commonality in the area, similar to the “Austronesian” language family area at the bottom. This research also aims at reaching a comprehensive understanding of cross-border movement and networking of people, goods, and information spanning, from Maritime Asia to Oceania in the modern age.

The wave of development in the island environments has changed people’s livelihoods considerably. It is directly linked to the destruction of considerable cultural heritage. This increasingly influences the traditions and acculturation of local communities. For the development of infrastructure and resources in islands, the National Museum of Ethnology Base devotes attention to (1) changes in subsistence activities of agriculture and fishery and their dynamics, which are directly affected by development. The base also clarifies the historical dynamics and current situation of (2) challenges in preserving ruins and cultural heritage that are affected directly by development and their conversion into tourism resources. Finally, it addresses (3) the activities that significantly resist against globalization and development, such as cultural reconstruction and identity reaffirmation.

Center of the East Eurasian Studies at the National Museum of Ethnology Project Leader: SHIMAMURA Ippei

The purpose of this project is to elucidate East Eurasia’s influence on the world, from the perspectives of cultural clashes and well-being. East Eurasia, as a loose concept of area, refers to the wide region circumjacent to China and Russia, including their neighboring Mongolia, the Korean Peninsula, and Japan, and areas close to or related to these countries. With due consideration to the globalization of policies, international relations, and the economy, the project clarifies the actuality of cultures clashing in their religious, cultural, economic, and political activities, and the creation of coexistence based on the modern historical background. It particularly addresses the Chinese, Russians, and their neighboring nations.

While supporting the Tohoku University Base, the core center of this project, the National Museum of Ethnology Base, researchers religion and subculture, specifically addressing how they instill hope in global relations in a phase that differs from the political and economic order. The former socialist bloc is characterized by a connection to institutional religions based outside the bloc, global cultures, including New Age thought, and subcultures derived from the former Western bloc after the 1990s. It is the same in China in that it connects with foreign religions and cultures after the reform and opening-up. For that reason, against the backdrop of eastern Eurasia’s lag in globalization, occurring mostly during the post-socialist era, the National Museum of Ethnology Base clarifies the sense of well-being provided to people by the newly created cultures, and the resultant cultural upheavals.

National Institutes for the Humanities (NIHU) Co-creation Initiatives

The National Institutes for the Humanities encourages the development of research, by achieving the missions of the institutes for six years, from FY2022. It also promotes Humanities Co-creation Initiatives, which are joint research endeavors co-created by various organizations and people within and outside of the institutes.

Co-creation Research Projects

Establishing Science for Universal Communication (S_COM) Principal Investigator: KIKUSAWA Ritsuko

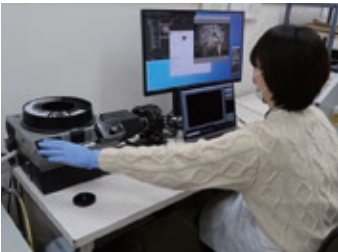
The Museum and the National Institute for Japanese Language and Linguistics collaboratively serve as the principal bases for this project, and promote research in communication symbiotic science. The Museum pursues basic and practical research on visual communication through sign language using accumulated research in sign language studies, non-visual communication using sound and touch, and brain activity related to language use. By primarily examining sociolinguistics, corpus linguistics, and Japanese language education, the National Institute for Japanese Language and Linguistics conducts problem-solving research and studies that address social problems occurring in interpersonal communication, especially those surrounding the social characteristics of each. This accurately elucidates the structure of language issues related to social difficulties. By cooperating with external researchers across various disciplines in the two institutions and its related fields of sociology, cultural anthropology, cognitive psychology, cognitive science, social psychology, medicine, neuroscience, and information engineering, the project seeks solutions to communication problems and paths leading to societal coexistence, including diverse languages and different communication modes.



Special Exhibition “*Homō loquēns*” ‘talking human’: Wonders of Language and Languages”

Building Digital Library for Humanities Project Leader: IIDA Taku

This project aims to establish a platform that digitizes photographs, videos, and sound materials recorded worldwide by Japanese researchers and research institutions, for building an integrated database facilitating shared usage of these academic materials. The National Museum of Ethnology Base supports researchers belonging to universities and research institutions in Japan. It uses a database system for photographic images that has been developed with the National Institute of Informatics, to make the support more effective and more accessible. Through this project, we aim to further facilitate researchers’ and research institutions’ investigation, and to create an interdisciplinary open science foundation by sharing publicly available data in research internationally. In cooperation with the National Institute for Japanese Language and Linguistics Base, which develops integrated database systems for sounds and moving images, we promote cross-disciplinary collaborative researches to develop the discipline of digital humanities.



Digitizing of film photographs at the National Museum of Ethnology

Individual Research Projects

FY2023 Research Theme

Director-General

YOSHIDA Kenji	Study of Creation, Transmission, and Representation of Culture: A Museum-Anthropological Approach
---------------	--

Department of Advanced Human Sciences

ICHINO Shinichiro	1. Research Evaluation and Institutional Research of Ethnological Museum 2. Relationships between Primates and Local People in Madagascar
OKADA Emi	1. Traditional Polyphony and Singing Culture of Naga Tribes in Northeast India 2. Transmission of Hindustani Classical Music 3. Songs of Bengal: Baul and Patua
KIKUSAWA Ritsuko	Application of the Geographic Information System (GIS) to the Historical Analyses of Languages
SASAHARA Ryoji	Phases of Masks in the Performing Arts and Festivals of Japan
SUEMORI Kaoru	Application of 3D Records and Spectroscopic Images to Visualize/ Analyze Cultural Heritage
SONODA Naoko	Integrated Collection Management of Ethnological Collection
HIRANO Chikako	Anthropological Study on Problem Drinking among Indigenous Australians
HIROSE Koujirou	An Anthropological Study of the Concept of “Barrier-Free”
MARUKAWA Yuzo	Research of Information Service for Cultural Assets based on Informatics of Association
MIYAMAE Chisako	Development of Methods for Utilizing 3D Archive Data to Enhance Communication between Museums and the Public
YOSHIOKA Noboru	Descriptive Linguistics for Northern Pakistan Languages

Department of Cross-Field Research

UDAGAWA Taeko	Reconsideration and Reconstruction of the Public and the Intimate
OTA Shimpei	Integration and Variation of Socio-Cultures in Korea
KASHINAGA Masao	Scripts and Texts of the Tai Dam in Vietnam and in Laos
HAN Min	Anthropological Research on Society, History and Symbols
SHINMEN Mitsuhiro	A Study of Freedom and Natural Rights/Natural Law in the History of European Thought, with a Focus on Christianity
SUGASE Akiko	Identity Representation and Nationalism of Religious Minorities in Eastern Mediterranean Arab Countries
NARA Masashi	An Anthropological Study of Religions and Mobilities: A Case Study of Hui Muslims in Contemporary China
FUJII Shinichi	Anthropological Research on Peace and Violence
MATTHEWS,Peter J.	Ethnobotany and Prehistory in Asia and the Pacific
MATSUO Mizuho	Anthropological Study on Mixed Races in South Asia
MINAMI Makito	Research on Depopulation and Mobility in Nepali Mountain Villages

Department of Modern Society and Civilization

IKEYA Kazunobu	Environmental Adaptation among Nomadic Peoples in Monsoon Asia
ITO Atsunori	Practical Research on Indigenizing Anthropology Museums
UEBA Yoko	A Comparative Study of Handicraft Culture
SAITO Akira	A Comprehensive Study of the Viceroy Toledo’s General Resettlement in the Colonial Andes
SAITO Reiko	The Movements and Interchanges of People and Things in the Ainu and Their Neighbors
SUZUKI Kota	Cultural-Historical Research on the Relationship between Political Power and Folk Performing Arts
HIRAI Kyonosuke	An Ethnographical Study of the Formation, Use and Agency of the Minamata Disease Movement’s Archives
FUKUOKA Shota	A Study on Influences of Audiovisual Media on Performing Arts
FUJIMOTO Toko	Society and Religion of Migrating People: Anthropological Study on Central Eurasian Steppe
MATSUMOTO Yuichi	Archaeological Study on the Complex Societies in the Prehistoric Andes
YAMANAKA Yuriko	Comparative Study of Marvels and the Uncanny: Human Imagination and the Natural World

Department of Globalization and Humanity

AISHIMA Hatsuki	Aesthetics and Body Culture in Contemporary Egypt
IIDA Taku	Historical Studies of Establishment and Development of Japanese Society of Ethnology
UDA Shuhei	Relationship between Birds and Humans
KURODA Kenji	Self-Other Relationship between Japan and the Middle East’
SUZUKI Hideaki	Western Indian Ocean World from Perspective of Mobility
CHE Sohee	Folk Illness and Gender Dynamics: Exploring Society and Culture
NAKAGAWA Osamu	Anthropological Study on Capitalism and Its Periphery: The Case of Hmong Refugees in France
NIWA Norio	Anthropology of Support
NOBUTA Toshihiro	An Anthropological Study on Indigenous Peoples in Malaysia
MIO Minoru	An Anthropological Study on Inclusive Society
	Anthropological Study on Transformation of Religion and Culture in Western India
YAGI Yuriko	A Study on the Offering and Religiosity of Contemporary Andean People

Center for Cultural Resource Studies

ONO Rintaro	Study of Island migration, Subsistence, and Cultural Heritages in Maritime Asia and Oceania
KAWASE Itsushi	The Study on Theory and Practice of Ethnofiction
KAWANISHI Eriko	An Anthropological Study of Alternative Spirituality and Religion
KISHIGAMI Nobuhiro	Art and Social Change of Canada’s Northwest Coast Peoples
SHIMAMURA Ippei	The Interdisciplinary Research on the Glocal Practices of Mongolian Buddhism
SUZUKI Motoi	Cultural Anthropological Study of Latin American “Arte Popular”
TERAMURA Hirofumi	Archaeological Research on the Propagation of Religion and Its Acceptance and Transformation in Silk Road Cities
NOBAYASHI Atsushi	Ethnoarchaeology of Hunter-Gardeners
HIDAKA Shingo	Building Effective Utilization Models of Local Cultures
MISHIMA Teiko	A Theoretical Study on the Plural Significance of Ethnic Culture- From the Work Ethic of Merchant Migrants

Dissemination of Research Findings

Note: Those with no venue cited were held in the Museum.

The Museum promotes active dissemination of research findings, via symposia, research forums, and participation of staff in international academic meetings using the “Research Results Presentation Program” under the Director-General’s Leadership Program. Using various external funds, the Museum has conducted numerous symposia and forums in FY2022 (see below).
For information about Minpaku Special Research Projects symposia and forums, please see p. 8. and 9.

Honors and Awards

Award recipient	Date	Awards
KAWAMURA Yukako	June 19, 2022	The 15th Japan Society for the Coservation of Cultural Property Research Encouragement Award
HIDAKA Shingo	June 24, 2022	JSSD Excellent Design Award 2021
UDA Shuhei	June 26, 2022	The 37th Daido Life Foundation Incentive Award for Area Studies
KAWASE Itsushi	December 16, 2022	Semi-Grand Prix of Visual Anthropology Competition Tokyo Documentary Festival 2022
KURODA Kenji	February 18, 2023	The 18th Researcher's Award for the International Institute for the Study of Religions

Public Academic Lectures

The Museum organizes public academic lectures in Osaka and Tokyo. These facilitate cross-cultural understanding and help to increase public recognition of the Museum.

Public Lecture

“Reconsidering ‘Minzoku’ in Japan and Taiwan”

Date	November 11, 2022
Venue	Nikkei Hall (Tokyo) with online streaming
Lecturers	OGUMA Eiji SAITO Reiko NOBAYASHI Atsushi
Attendance	582
Co-host	NIKKEI INC.

Public Lecture

“Living with Invisibles: The Entanglements of Humans and Microbes in Eating”

Date	March 31, 2023
Venue	Oval Hall (Osaka) with online streaming
Lecturers	NARA Masashi UMEZAKI Masahiro OGURA Hiraku UDAGAWA Taeko HIRANO Chikako
Moderator	
Attendance	440
Co-host	Mainichi Newspapers



Online meeting

Online International Colloquium

“Cultural Transmission against Collective Amnesia: Bodies and Things in Heritage Practices”

Date	November 5 – November 6, 2022
Coordinator	IIDA Taku
Fund	Research Results Presentation Program
The total number of participants	87

Publication of Research Results FY2022

Publications by the Museum

Bulletin of the National Museum of Ethnology

The Bulletin of the National Museum of Ethnology is a research journal that contribute to the advancement of ethnic studies and cultural anthropology. It publishes articles, book reviews, documentary materials, and research notes related to ethnic studies, anthropology, and related fields. Published four times a year.

Vol. 47, No. 1 **Special Theme** Material Cultural Studies on Boats and Fishing Tools Based on the Museum Collections and Fieldwork
ONO Rintaro, **Introduction: Material Culture Related to Fishing and Boats in Southeast Asia**
Articles
Mohammad Rohaizat Abdul Wahab, Structure, Building, and Conservation of *Kolek* Boats as Malay Traditional Boats
Mohd Nasrulamiazam Bin Mohd Nasir, *Pertala Indera* Boat: Historical and Cultural Aspects of Bird-Themed Boats in Kelantan, Malaysia
LACSINA Ligaya, From the Site to the Museum: Archaeologically Excavated Butuan Boat Remains Displayed in the National Museum of the Philippines
ZAYAS Cynthia Neri, Persistence of *Bubo*, Fish Trap in the Philippine Artisanal Fishery
TSUJI Takashi, Eco-Material Culture Study of Fish Traps in the Mekong Basin of Lao PDR
Article
JIA Yulong, Daily Life and Neighborhood Relation in Rural Hubei: Relatedness within Farm Work and Leisure Activity

Vol. 47, No. 2 **Special Theme** The Re-shaping and Non-shaping of Hakka Ethnicity: Perspectives from Anthropology
KAWAI Hironao, **Introduction**
Article
KAWAI Hironao, Ethnology and Spatial Classification: Ethnographic Descriptions of “Guest People” and Their Social Influences
Research Note
YOKOTA Koichi, Unstable Boundaries: Reflecting on the Hakka Boundary from the Chaoshan District and Southern Taiwan
Article
HUNG Hsin-Lan, The Flow and Shaping of Identity: The “New Hakkensee” under the “New Hakka Movement” in Taiwan
Research Note
IIJIMA Noriko, The Migration of Jiangxi Hakka to Yunnan: The Re-emerging “Hakka Sphere” in Jiangxi
Article
WU Yunxia, Gathering with Ancestral Spirits under the Big Streamer: On the Ambiguity of Vietnamese Ngai’s Hakka Identity through Their Religious Rituals
Article
HIRANO Chikako, Ways to Avoid Trouble: A Case Study of Anangu Liquor Hunting in the Central Desert of Australia

Vol. 47, No. 3 **Research Note**
AKAMINE Jun, An Introduction to the Political Economy of Japanese Modern Whaling: Edible Oil Competition and the Rise and Sink of Whale Oil Production
Research Resource
YOSHIDA Kenji, Revisiting “Images of Other Cultures”: Impact of the 1997 Exhibition and Beyond

Vol. 47, No. 4 **Articles**
FUKUMA Mao, Transnational Exchange of Yaqui
HIDAKA Shingo, Museum Operations during the COVID-19 Pandemic: Initiatives Taken by the National Museum of Ethnology
WADA Hiroshi, Trend Analysis of the Number of Visitors Occupying a Special Exhibition Room to Verify Effects of Numbers of Visitors on Exhibition Room Environments
Research Resource
NOBUTA Toshihiro, The Minpaku Sama-Sama School Challenge: Special Needs Education and Lifelong Learning for People with Intellectual Disabilities

Senri Ethnological Studies (SES)

Senri Ethnological Studies presents individual works, article collections, and annotated bibliographies regarding specific peoples, regions, or themes, with the goal of publicizing in Japan and overseas the results of research conducted by the Museum. An occasional publication.

No. 111 YAGI Yuriko (ed.), *Etnografía Andina: Recorrido y Valoración Cultural*
No. 112 SEKI Yuji (ed.), *New Perspectives on the Early Formation of the Andean Civilization: Chronology, Interaction, and Social Organization*

Senri Ethnological Reports (SER)

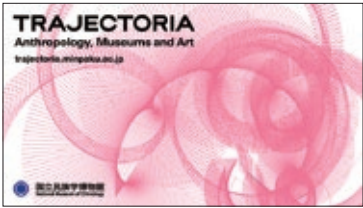
The purpose of Senri Ethnological Reports is to publicize as quickly as possible the results of research conducted by the Museum’s faculty, cooperating faculty, and research fellows. SER publishes the results of field investigations regarding specific peoples, regions, or themes that require preliminary reports, as well as items of a source material nature such as bibliographies and data collections. Published in Japanese and other languages. Occasional publication.

No. 155 SONODA Naoko (ed.), *Sustainable Collection Management*
No. 156 KISHIGAMI Nobuhiro (ed.), *Research Trends on Indigenous Cultures along the North Pacific Rim Regions*

TRAJECTORIA

TRAJECTORIA is an international multimedia peer-reviewed journal situated at the intersection of anthropology, heritage studies, museum studies, and the arts. It is published annually online by the National Museum of Ethnology.

Vol. 4 **Multimedia Articles**
OLARTE-SIERRA María Fernanda, Gina Urazan RAZZINI, David GRACES, and Sergio Rodríguez VITTA, **Forensic Tales: Embodied Peace and Violence in Colombian (Post) Armed Conflict**
KARATAŞ Işıl, **Analogue Practices in Digital Landscapes**
Willimann/Arai, **The gift exercise/Invitation 6: Sihlwald - Letter to/from a barkbeetle**
DIETRICH Martha-Cecilia, **The Politics of Visibility and Visuality in Camera-Based Research**
Carte Blanche
SHELTON Anthony Alan, “The Future is Unwritten”: A Year of Living in the Pandemic



Minpaku Tsushin Online

Minpaku Tsushin Online is a magazine that describes the academic characteristics and unique features of and achievements resulting from individual research projects conducted at the Museum in a manner that is comprehensible to researchers and the general public. The magazine launched online publications in FY2019 and has published electronic books.

No. 6 **Final Report**
NIHU Transdisciplinary Project Maritime Adaptation and Material Culture in Maritime Asia-Based on the Museum Materials from Southeast Asia
ONO Rintaro, **Southeast Asia and Oceania: Process and Introduction of Maritime Culture Database**
NIHU Transdisciplinary Project Material Culture in Central and North Asia: Ethno-Cultural Objects at the National Museum of Ethnology
TERAMURA Hirofumi, **Multimedia Content Connecting Ethno-Cultural Objects with Source Communities**
NIHU Transdisciplinary Project Internationalization and the Development of Interdisciplinary Studies on Database of “Yakihata (Swidden Fields): The SASAKI Komei Collection”
IKEYA Kazunobu, **Organization of Exhibitions on Slash-and-Burn Cultivation and Their Impacts**
NIHU Transdisciplinary Project Cultural Heritage Sites Possessing Memories of Tsunamis: Database of Temples/Shrines and Stone Monuments: Enhancing the Database for the Info-Forum Museum
HIDAKA Shingo, **Future Prospects of Cultural Heritage Sites Possessing Memories of Tsunamis: Database of Temples/Shrines and Stone Monuments**
NIHU Transdisciplinary Project Information Reinforcement Based on Video Recordings of Various Ethnic Cultures in Senegal
MISHIMA Teiko, **Database for the Next Generations Made by the Source Community**
NIHU Transdisciplinary Project Northeast Asian Area Studies
IKEYA Kazunobu, **Beads Exhibition at the National Ainu Museum (October 2–December 5, 2021)**
NIHU Transdisciplinary Project Modern Middle East Studies
NISHIO Tetsuo, **Towards a Pluralistic and Multi-Valued Society: People and Cultures of the Middle East in the Age of Global Change**
NIHU Transdisciplinary Project Integrated Area Studies on South Asia
MIO Minoru, **Investigation of Structural Transformation of South Asia through Network-Based Collaborative Research**
Minpaku Special Research Project Humanity and Communities in Cultural Heritage in the Age of Digital Technology
IIDA Taku, **An Online Event during Covid-19 Pandemic**
Inter-University Research Project Anthropological Inquiries into Uncertainty, Apprehension, and Responsibility
NISHI Makoto, **Practicing and Valuing Care**
Inter-University Research Project Experimental Film Project for Extended Interdisciplinary Fields
FUJITA Mizuho, **Toward Art Practice as Academic Research**

No. 7 **Start Up**
NIHU Transdisciplinary Project Indian Ocean World Studies
MIO Minoru, **Renovation of Area Studies and “NIHU Indian Ocean World Studies” Project**
NIHU Transdisciplinary Project Global Mediterranean
NISHIO Tetsuo, **Global Humanities as a New Bridge between Environment and the Human Mind**
NIHU Transdisciplinary Project Maritime Asian and Pacific Studies
ONO Rintaro, **New Horizon and Targets of Area Study in Maritime World**
NIHU Transdisciplinary Project East Eurasian Studies
SHIMAMURA Ippai, **Examining Well-Being and Conflicts through Religions and Sub-Cultures in Eastern Eurasia**
Minpaku Special Research Project Challenges for Museums in the Era of Post-nationalism: Methods of Exhibiting Minority and Indigenous Cultures
SUZUKI Motoi, **The Scope of the Special Research Project “Challenges for Museums in the Era of Post-nationalism”**
Inter-University Research Project Migrations and Livelihoods of Asian Hunter-Gatherers: Diversity of Environmental Adaptations in Human History
IKEYA Kazunobu, **New View at Asian Hunter-Gatherers: Human History of Migration and Livelihoods**
Inter-University Research Project Connecting Diverse Logics in Global Capitalism: An Interdisciplinary Approach
NAKAGAWA Osamu, **Thinking Capitalism at the Junction of Diverse Social Domains**
Inter-University Research Project A Comparative Ethnography of Belonging and Difference in Mixed Heritage Peoples: Cases from Indigenous Peoples in Oceania
YAMANOUCHI Yuriko, **Being Indigenous with Mixed Ancestry: Cases from Oceania**
Inter-University Research Project Research on Historical Changes in Forest Resources and Their Uses Based on the Analysis of National Museum of Ethnology Collection: Focusing on the Wood Materials of Tubs and Barrels
OCHIAI Yukino, **Environmental and Cultural Value of Wood Products**



Publications outside the Museum

MATSUO Mizuho (ed.), *Anthropology of Substance: The Body, Nature, and the Reality of Relatedness*, Nakanishiya Shuppan
FUJITA Mizuho, Itsushi KAWASE, and Ran MURATSU (eds.), *Augmenting Images: The Borderless Pursuit of Anthropology and Art*, Akishobo

Minpaku Visual Ethnography

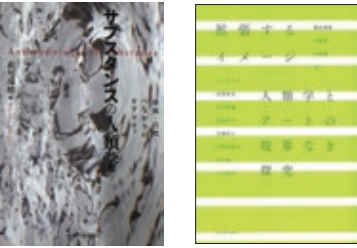
Minpaku Visual Ethnography is a DVD series created for research and educational purposes. The contents included visual works recorded during fieldwork. Four volumes are released annually and distributed to universities and research institutions nationwide and to national and public libraries.

Released in FY2022

Volume 46 SASAHARA Ryoji, YAMANAKA Yuriko, KAMINO Chie, Ise-daikagura, Past and Present: Itinerant Performers of *Shishimai* Dance
Volume 47 KURODA Etsuko, YOSHIDA Kenji, Mask Making: *Nô* Mask Master of Kyoto
Volume 48 OMORI Yasuhiro, A Shamanic Medium of Tsugaru
Volume 49 FUKUOKA Shota, The Rod Puppet Theater in Cirebon, Java

Minpaku Repository

By using NII’s (National Institute of the Information) institutional repository system, the Minpaku Repository, which includes in its holdings Minpaku’s own publications, allows an open access to Senri Ethnological Studies, Senri Ethnological Reports, the Bulletin of the National Museum of Ethnology, Senri Ethnological Research Reports Supplements, Minpaku Tsushin, National Museum of Ethnology Info-Forum Museum, electric journal “TRAJECTORIA”, and authorized theses and dissertations which were published outside of Minpaku. As at the end of FY2022, the total number of publications in the repository was about 5,370. The average number of paper downloads was about 45,770 per month.



Joint-Use Facilities for Scientific Research

Purpose of Establishment

The museum has nondestructive testing and material analysis equipment systems to conduct primary analysis of folklore materials, cultural assets, and museum materials. The facilities was established in December 2017 to promote the active use of the systems by various organizations and researchers in cultural anthropology and relevant disciplines in its peripheral domains thereby contributing to increased joint use in scientific researches.

List of Equipment

- X-ray CT scanning system
- 3D printer
- Three-dimensional measuring system
- Pyrolyser gus chromatograph - mass spectrometer
- Ion exchange chromatograph
- X-ray fluorescence spectrometer
- Temperature and humidity chamber
- Fourier transform infrared spectrophotometer (FT-IR)
- Digital microscope



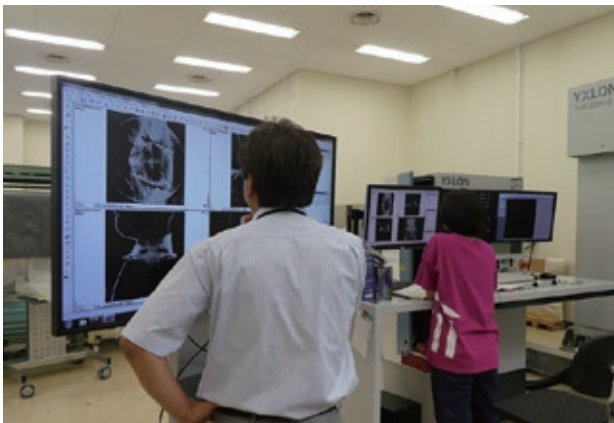
X-ray CT Scanning System



3D Printer

Records of Use

2020	
Records of Use	Organizations That Used the Facilities
7 cases	Kanazawa Gakuin University, The Museum of Kyoto, Tenri University Sankokan Museum, Iwate Prefectural Government Department of Culture and Sports Culture Promotion Division, Daitokuji Temple, Nou Hakusan Shrine, Umamioka Watamuki Shrine
2021	
Records of Use	Organizations That Used the Facilities
12 cases	Tenri University Sankokan Museum, Cultural Heritage Disaster Risk Management Center, Soshisha; Minamata Disease Support Center, Kosetsu Museum of Art, Itoigawa City Board of Education, Otsu City Board of Education, Kesennuma City Board of Education, Yamatotakada City Board of Education, Nou Hakusan Shrine, Oka Bokkodo Co.,Ltd, WORDSPRING.inc, etc
2022	
Records of Use	Organizations That Used the Facilities
17 cases	Kobe University, Otsu City Citizen Affairs Department Cultural Properties Protection Division, Kawasaki City Museum, Ootoyo Town Board of Education, Kesennuma City Board of Education, Murakami City Board of Education, Asahiyama Preservation Society, Daitoku-ji Temple, Nou Hakusan Shrine, MITSUWA FRONTECH CORP., Oka Bokkodo Co.,Ltd, WORDSPRING.inc, etc



Examination Using X-ray CT Scanning



Examination Using X-ray Fluorescence Spectrometer

How to Use

Please contact the Artifact Management Unit of the Information Planning Section if you are interested in using the systems.

Artifact Management Unit of the Information Planning Section

TEL +81-6-6878-8392

FAX +81-6-6878-8242

Mail hyohons@minpaku.ac.jp

Minpaku Library

Service Information

Daily from 10:00 a.m. to 5:00 p.m.(Entry permitted until 4:30 p.m.), except Sundays, National Holidays, and days that the Museum is closed.
Visitor qualifications: The library is open to all. The library card is required for lending books. Some materials may not be available.
URL <https://www.minpaku.ac.jp/sharing/library>

1. Encouraging Educational and Research Activities

Minpaku’s library collection includes many highly specialized works. Facilities include four microfilm readers and a color copy service. The library is staffed by qualified librarians and provides full support for the educational and research activities expected of an Inter-University Research Institute.

2. Promoting Public Access to the Library Catalog through the National Institute of Informatics

In FY2022, printed materials in 21 languages were cataloged, and the repository’s holdings reached 644,161 volumes.
Under the NACSIS-CAT (a comprehensive national database of general indices) Retrospective Entry Project, 2,413 microfiche records (books 2,413 items) were entered. With this, 98% of Minpaku’s library data have now been entered.

3. Social Contributions

All users can check out books from the library. As of FY2022, the library had 194 outside registered users making regular use of the library, who borrowed 1,422 items.

4. MINPAKU Library Catalog

The library catalog is open to the public and can be searched by anyone, anywhere from a personal computer or mobile phone. In FY2022, the catalog was accessed from computers 1,429,877 times and from mobile phones 429 times.

Research Archives

Since its establishment, the Museum has accumulated a wide range of resources, like research notes and papers of anthropologists and ethnologists, including audio-visual records from their fieldwork. To make good use of these materials, the Archives group under Information Management Committee continued in FY2022 to investigate the condition of archive resources and to develop inventory lists. The Museum will investigate continuously the condition of archive resources and develop and digitalize inventory lists, with the aim of making them open to public.

- AOKI Bunkyo Archive
 - ISHIGE Naomichi Archive
 - IZUMI Seichi Archive
 - INADA Koji: Japanese Folktales and Their Related Materials Archive
 - IWAMOTO Kimio Archive
 - UCHIDA Isao: East Asian Culture Archive Mainly for Taiwan and Japan in 1930s
 - UMESAO Tadao Archives
 - EGUCHI Kazuhisa: AfricaAsia Language Archive
 - OUCHI Seiko Archive
 - OKI Morihiro Archive (Indian Ethnological Cultural Resource Archive)
 - KATSURA Yonenosuke Archive
 - KANO Tadao Archive
- KIUCHI Nobuyuki Archive
 - KIKUZAWA Suelo Archive
 - KURITA Yasuyuki and BEFU Harumi: Japanese Gift-giving Archive
 - KOBAYASHI Yasuyoshi: Southern Taiwan Indigenous People Archive
 - SHINODA Osamu Archive
 - SUGIURA Kenichi Archive
 - The Japanese Scientific Expedition for Nepal Archive
 - HIJIKATA Hisakatsu Archive
 - MABUCHI Toichi Archive
 - MARUTANI Akira: Kutsuki Village Harihata Life Data Archive
 - “Regional Typology of Japanese Culture Study Group” Archive

Umesao Archives

April 2013 saw the creation of the Umesao Archives, where the enormous volume and variety of field notes, sketches, photographs, memos, draft manuscripts, publications, reviews and other intellectual assets produced by Minpaku’s first Director-General, UMESAO Tadao, are stored. An archivist will analyze and organize this material and provide support primarily for scholarly research.



Library Reception Counter



Current Periodicals Section



Neatly Archived Materials

Materials

Items in the Museum Collections Offered for Loan FY2022

In addition to using the items in its collection for internal research activities, the Museum offers items for loan to universities, other museums, and external organizations for educational and research purposes as part of its efforts to contribute to the public interest. To inquire about borrowing items from the Museum's collection, contact the Minpaku Collections Help Desk. A total of 231 inquiries were received during FY2022.

Minpaku Collections Help Desk

TEL /FAX +81-6-6878-8213

URL <https://www.minpaku.ac.jp/sharing/guide/helpdesk>

1. Number of Loans Made: 13, Number of Items Loaned: 1,006

Among the projects listed above, those for which the Museum's lending resources comprise more than 50% of the entire exhibit items are the following:

Borrower	Exhibition Title	Loaned Items	Exhibition Period	Items Loaned/Total Number of Items Loaned, % of Loaned Items Relative to the Entire Exhibition
Kochi Prefectural Museum of Histry	Special Exhibition "REGNAM IMAGINARIUM -Rearm of Marvelous and Uncanny-"	National Museum of Ethnology Special exhibition held in 2019. Related Documents	April 29-June 26, 2022	191 items/329 items, 58.0%
Ishikawa Nanao Art Museum	National Museum of Ethnology Collection "Beads in the World"	National Museum of Ethnology Special exhibition held in 2017. Related Documents	July 30-September 11, 2022	130 items/259 items, 50.2%
The Shoto Museum of Art	National Museum of Ethnology Collection: Beads in the World	National Museum of Ethnology Special exhibition held in 2017. Related Documents	November 15, 2022-January 15, 2023	206 items/315 items, 65.4%
Fukuoka City Museum	"REGNAM IMAGINARIUM -Rearm of Marvelous and Uncanny-"	National Museum of Ethnology Special exhibition held in 2019. Related Documents	March 11-May 14, 2023	260 items/390 items, 66.7%

2. Number of Special Loans (i.e., Loans for the Purpose of Photo-shooting, Close Examination for Research or Loan of Original Film): 101, 2,401 items

Of the above, 23 loans were made to universities for the use of photographs as references for survey research and writing, 20 were made to museums for the use of photographs in survey research and exhibitions.

3. Number of Loans of Audio-Visual Materials: 132, Number of Items Loaned: 5,639

Of the above, 49 loans were made to universities (1,492 items), and 11 loans to individual researchers and research groups (1,420 items).

4. Books and Periodicals

Number of special use (Use of original film or photo-shooting) 4 (of which 4 was for the use of photos as references for survey research and writing)

Photocopy orders: 3,520 (of which 2,025 were from universities)
Inter-library loans: 395 (of which 375 were from universities)
Photocopy orders: 181
Inter-library loans: 265

5. Research Archive Materials

Number of browsing instances: 31
Number of instances of special utilization: 21

Storage of Academic Materials

The Museum has accumulated a large collection of academic materials through its research. Many of the materials are organic artifacts that generally have the least resistance to insect and fungus damage. Therefore, the Museum takes special measures to repel and kill insects and protect its collection. For example, newly acquired artifacts from abroad are taken to a fumigation chamber where they are treated with chemical insecticides and germicides, because the natural environment and ecosystem of their place of origin are substantially different from those of Japan. Artifacts that have insect damage in Japan, however, are subjected to a non-chemical insecticidal process as required, due to the nature of the materials. In this way, different insecticidal processes are used, depending on the place of origin, the extent of damage, and the nature of the materials. To enhance insecticidal efficiency and better protect artifacts from insect damage in a unique way, in 2007 a large high/low temperature walk-in treatment chamber was installed in the Museum and the existing fumigation chamber was upgraded to a multi-functional chamber capable of carbon dioxide treatment and low oxygen concentration treatment. Also, a catalytic combustion type chemical abatement system was introduced to ensure the safe treatment of waste chemicals, thus realizing a materials management system that is friendly to people, artifacts, and nature.

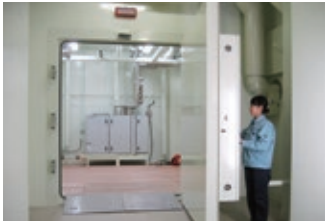
These state-of-the-art systems are one of the results of the research on the conservation science of artifacts that the Museum and other university researchers have been jointly conducting to ensure effective use of its artifact collection.



Artifact Storage Area



The High/Low Temperature Walk-in Treatment Chamber



A Multi-functional Fumigation Chamber Capable of Carbon Dioxide and Low Oxygen Concentration Treatments

Utilization of Minpaku for University Students and Faculty Members

We have established a system to encourage wide-ranging utilization of our research outcomes, exhibits, archived resources, cultural and academic information and facilities, for university education and research.
URL <https://www.minpaku.ac.jp/teacher/university/manual>

Utilization of Exhibition Halls for Lessons

If you wish to use the Exhibition Halls for a lecture, seminar or official event (such as an orientation meeting for new students) of your university under the supervision of a faculty member, we will waive the admission charges, if you apply before the event.
If a faculty member can not supervise the event, or if a professional or specialized training college wishes to use the Museum for a specialist training course, the admission charges will be discounted upon presenting the syllabus or any document that describes the syllabus content.

Use of the Library

We have approximately 695,000 books and other media resources that focus mainly on cultural anthropology and ethnology. We encourage visits to the Library as a part of university education.

Use of Artifacts and Resources

We have approximately 345,000 artifacts and resources collected from all over the world. The objects held at Minpaku are available for investigation, photography, and image use in lessons and research.

Use of Audio-Visual Materials

We have approximately 70,000 Audio-Visual Materials from all over the world, including those produced by Minpaku. You can view about 619 Videothèque Programs on DVD. Some video materials are distributed through online streaming to make them available for online classes.

Use of Databases

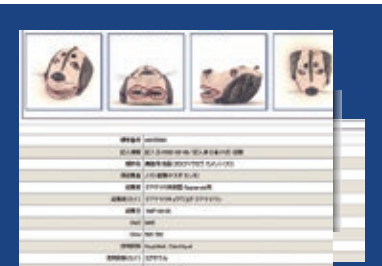
An enormous amount of information is provided in our databases for collections and research results.

Development of Young Researchers

"Minpaku Junior Researcher's Seminar" is regularly held to promote joint use of the museum by young researchers. The two-day seminar consists of a keynote speech by museum faculty and presentation and discussion by participants. Additionally, it organizes library and storage area tours for young researchers to know more about various joint use systems and a facility directory.



Use of Exhibition Halls

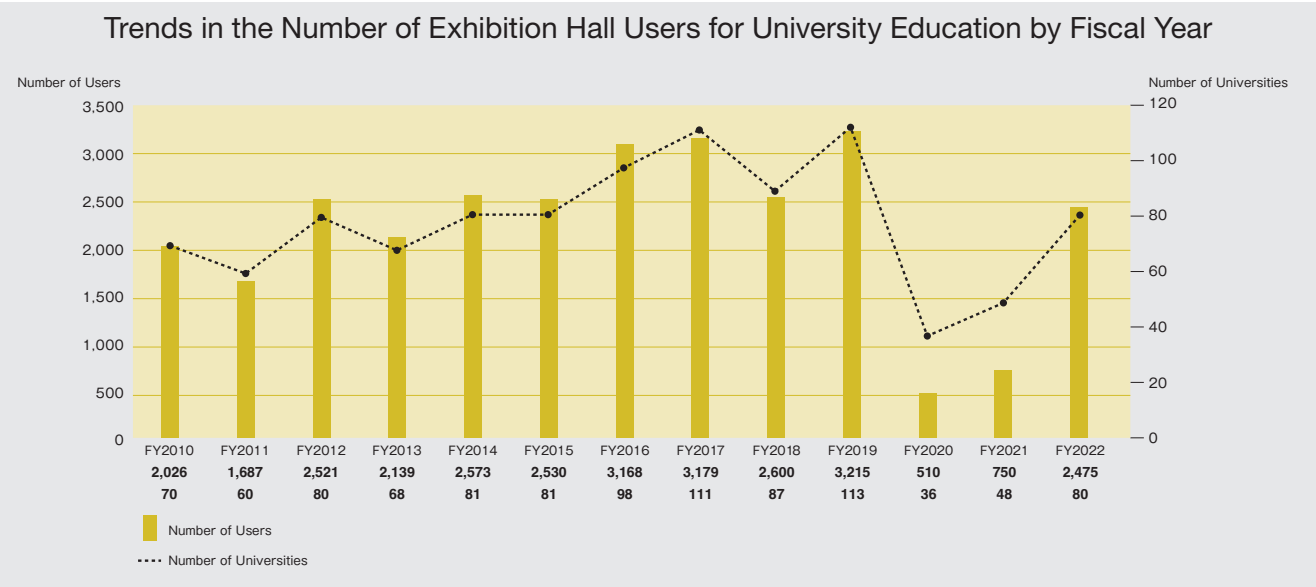


Use of Databases



Minpaku Junior Researcher's Seminar

Records of Use (Free-of-charge Use) 80 Universities, 2,475 users (FY2022)



Exhibitions

Concept and Organization of Exhibitions

At the National Museum of Ethnology, exhibitions are designed to present the latest achievements of anthropological, ethnological and other related scientific research to the public through a variety of media. In doing so, the Museum hopes to enhance public awareness of different cultures around the world and foster greater cross-cultural understanding. The exhibitions consist of Main Exhibitions and the Special Exhibitions. The Main Exhibitions are mostly permanent, and are designed to deepen understanding among visitors of cultural diversity and commonality. The Special Exhibitions, on the other hand, highlight specific topics and are held several times annually for a limited period of time.

Main Exhibitions

The Main Exhibitions are arranged into regional and cross-cultural exhibitions. The regional exhibitions cover Oceania, the Americas, Europe, Africa, and Asia, including Japan. The regional exhibitions start with Oceania, and progress as if traveling eastwards around the world to finish in Japan.

This arrangement allows visitors to view Japanese culture in comparison with other cultures. In designing the exhibitions, the National Museum of Ethnology adhered to the notion that all human cultures around the world have equal value; the notion has remained unchanged since the inception of the Museum. Accordingly, the exhibitions are designed to help visitors respect cultural differences among peoples, represented in the rich diversity of human lifestyles. These exhibitions are also characterized by their emphasis on clothing, food and housing, which gives visitors a clear idea about lives in different regions around the world. The cross-cultural exhibitions, on the other hand, focus on specific themes, not regions, and currently accommodate exhibitions on music and language.

Given the substantial changes of the social and cultural situation in the world since Minpaku's opening in 1977, the Museum has been renovating its exhibitions since FY2008, and it has completed in FY2016.

In the Thematic Exhibition Galleries in the Main Exhibition Hall, temporary exhibits display themes related to contemporary issues and cutting-edge research. Other individual themes are also presented.

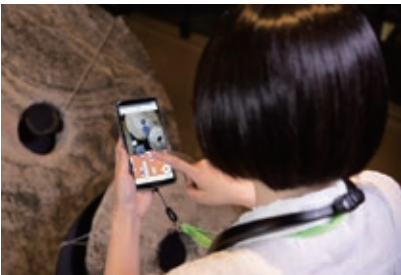
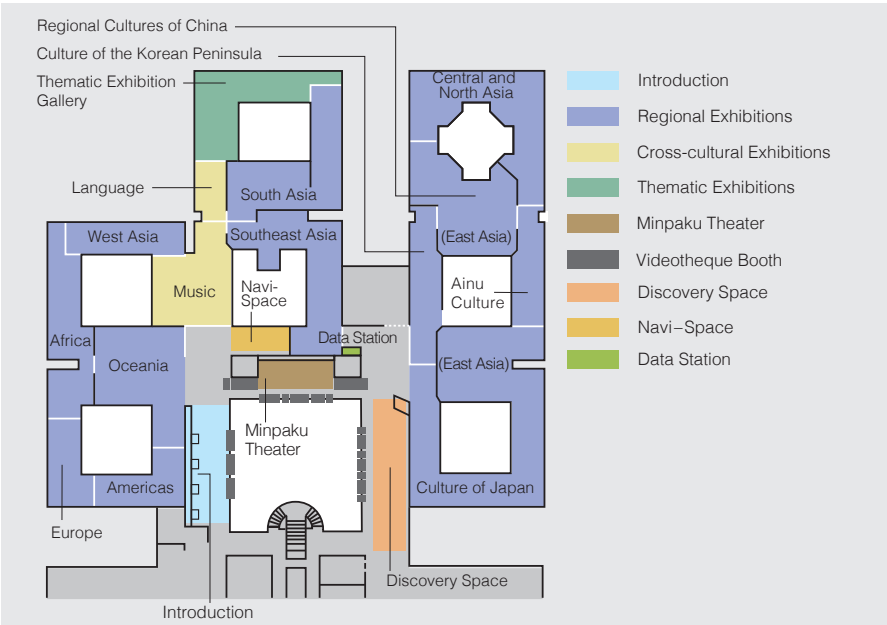
These Thematic Exhibition Galleries can also be used as a shared exhibition gallery to expedite displays of the latest research trends of universities and other institutions in Japan and overseas.

The Museum encourages the introduction of information devices into its exhibits.

One such device is the Videotheque. As the world's first on-demand video library of its kind, it was developed by the Museum when it opened its doors to the public. Video programs provide visitors with glimpses of the living cultures of the world's peoples and let them see how the artifacts shown in the Main Exhibition Hall are actually used.

The system allows visitors to select a video program from the Museum's collection, which now contains 844 titles. In FY2022, the Minpaku Theater was established for visitors to become more immersed in the images. A booth exists to facilitate the visualization of dynamic videos for a large group of people on a large screen, along with booths allowing a small group of people to observe images comfortably on a large monitor. The second example of information devices held by the Museum is the Minpaku Digital Guide, which was developed in 1999 as the world's first portable audiovisual device using videos and voices to describe exhibits. The Minpaku Digital Guide provides various types of information, such as how the items exhibited were used, in what locations they were used, and by what kind of people they were used. The Minpaku Digital Guide was renewed in 2020 as a system equipped with new functions such as guidance for museum facilities and a link with Videotheque. Now, the system allows visitors to watch videos describing the exhibits on smartphones while checking their locations on the explanatory hall map displayed in their hand. Linking to Videotheque by LinkRay (visible light communications) automatically introduces Videotheque programs related to exhibition materials for which the visitor has watched the commentary. These videos have been translated into multiple languages. Videotheque now provides 476 programs, out of the total of 844 programs, in nine different languages. The Digital Guide, produced in 2019, includes 328 programs that were made available in nine languages through machine translation of seven languages based on English subtitle data.

In the Discovery space, visitors can use the terminals to access and compare a wealth of information on artifacts currently on display. Related books and journals as well as Minpaku publications are also available.



Minpaku Digital Guide
This guide describes facilities and exhibits in the Exhibition Halls using the museum map. It shows videos and information related to the locations artifacts were found, how they were used, and by whom they were used. Explanations are currently available in nine languages, including Japanese, English, and Chinese.

Regional Exhibitions

The regional exhibitions focus on Oceania, the Americas, Europe, Africa, West Asia, South Asia, Southeast Asia, Central and North Asia, and East Asia. The figures appearing next to each exhibition space's name indicate the exhibit area in square meters.

Oceania 660m²



Human Dispersal into Oceania **Living off the Sea** **Living on Islands**
Contact with the Outside World **Expressions of Indigenous Identity**

In Oceania, tens of thousands of islands, large and small, are scattered across the surface of the ocean. The islands are inhabited by peoples who grow root and tree crops and are highly skilled in the arts of seamanship and navigation. In the sections "Human dispersal into Oceania", "Living off the Sea", and "Living on Islands", we explore the diverse techniques developed to survive in island environments with limited resources. We also examine how indigenous cultures have been affected by encounters with the outside world in the sections "Contact with the Outside World" and "Expressions of Indigenous Identity".

The Americas 320m²



Encounter **Eating** **Clothing**
Prayer **Creativity**

The vast expanses of the Americas range from polar regions to tropical rain forests and encompass a huge diversity of natural environments. Peoples adapting to these environments developed distinctive lifeways. Then came conquest and colonization by European peoples, with foreign influences permeating everyday life. Here our focus is on clothing, diet and religion. While clarifying the relationship between their underlying diversity and historical influences, we also draw attention to traditional artists and craftsmakers who creatively combine tradition with modern values in their works.

Europe 250m²



Agriculture and the Annual Cycle **Religions and Beliefs**
Industrialization **Europe in Transformation**

From the 16th to the 20th centuries, Europe was the center from which Christianity and modern institutions, technologies, and knowledge spread around the world. Now the tide has turned, and immigrants from all over the world are making themselves part of European society. Here we explore the interactions of tradition and religion, rationalization and industrialization, and immigration in the formation of modern Europe, focusing on the concept of "time".

Africa 500m²



Excavating History **Urban Life** **Work** **Adornment**
Prayer **Africa Today**

Africa, the birthplace of humanity, has gone through profound changes and has always been tied to the outside world. The diversity of cultures and languages that we see in the African continent today is the result of these changes. In this exhibit, we introduce the way in which people live in Africa today, focusing on four different aspects—"urban life", "work", "adornment" and "prayer". We also look at the efforts people are making to rediscover their history. We hope that this exhibit fosters renewed understanding toward the people of Africa, who live in the same present as we do.

West Asia

310m²

Religion
Living in the Desert
The Palestinian
Diaspora
Coffee as
Global Culture
Sound Culture
and Pop Culture



The people of West Asia, or the Middle East, call their land in Arabic *mashriq*, ‘the land of the rising sun’. Historically, they have kept close ties to the *maghrib*, ‘the land of the setting sun’, that is, North Africa. These regions consist mainly of dry lands inhabited by nomadic peoples. At the same time, urban cultures flourished in large cities such as Baghdad and Cairo. Islam is the majority religion in West Asia, but this region is also the cradle of Judaism and Christianity. This gallery highlights religious practices, nomadic life, women’s dress, and music and dance to show how global change has reached the lives of people in West Asia.

Southeast Asia

730m²



Subsistence
Everyday Life in a Village
Entertainment and Recreation
Urbanscapes

Southeast Asia is encompassed by forests and seas. The climate is tropical to subtropical; people start work early in the morning, and return home and nap in the middle of the day when temperatures can approach 40°C. In the evenings and after squalls have passed, temperatures start to fall. People go out to shop or go back to work in their fields. In the cool of the evening they relax, head to outdoor stalls for meals with friends or family, or relax and enjoy traditional performing arts. The theme of this exhibit, which introduces a rich variety of ethnic cultures, is “A Day in the Life of Southeast Asia”.

South Asia

600m²



Religion—Tradition and Diversity
Ecology and Subsistence
Urban Popular Culture
Tradition and Trends in Textiles
South Asia on the Move

South Asia extends from the mountain ranges in the north, to the Arabian Sea in the west, and the Bay of Bengal in the east. In this region there is a vast range of natural environments inhabited by peoples with an enormous diversity of religions, cultures, and ways of life. Wisdom of coexistence developed over the centuries, and, despite rapid industrialization, is preserved to this day. This gallery exhibits a diverse array of religions, livelihoods and crafts, together with new forms of popular culture emerging primarily in urban settings, and the booming textile culture in the midst of globalization.

Central and North Asia

710m²



Living with Nature
The Socialist Era
Central Asia
Mongolia
Siberia and the Arctic

Central and North Asia is an immense region occupying the northeast of the Eurasian continent. It has long been a crossroads for interactions linking east and west, north and south, where many diverse peoples have mingled. After undergoing socialist rule during the twentieth century, the region has shifted to market economies. Caught up in the wave of globalization, traditions are being reevaluated. This exhibit has three sections on “Central Asia”, “Mongolia”, and “Siberia and the Arctic”, along with two sections accentuating the key themes of “Living with Nature” and “The Socialist Era.”

East Asia

Culture of the Korean Peninsula 330m²



Spiritual Worlds
Housing
Food
Clothing
Recreation
Knowledge

The inhabitants of the Korean peninsula developed their own distinctive culture under constant influence from other ethnic groups. Cultural elements adopted from Eastern Siberia in prehistoric times, and later from China, were reworked and domesticated to become distinctively Korean. The result is a culture with a level of integration rarely found elsewhere in the world. In modern times, Korea was colonized by Japan, then split in two after independence and rapidly modernized. In today’s world, Koreans are actively migrating to other parts of the world, and people of Korean descent can be found living outside Korea. Spiritual worlds, everyday life, recreation, and knowledge are the themes of this exhibit, which introduces the multilayered history and energetic character of this culture.

East Asia

Ainu Culture 270m²



The Ainu People
Kamuy and Nature
Present and Future

The Ainu are an indigenous people who developed a culture adapted to the cold natural environment of the northern part of the Japanese archipelago, primarily in Hokkaido. Domination by the Tokugawa Shogunate during the Edo period and assimilation during the Meiji period led to discrimination against the Ainu and imposed hardships on them. In recent years, Japan’s government has acknowledged this history and been taking steps that show respect for the Ainu people. Here we introduce the evolving situation of the Ainu, who continue to honor their traditions and strive to create a new and distinct culture.

East Asia

Regional Cultures of China 660m²



Subsistence
Musical Instruments
Zhuang Stilt House
Costume
Crafts
Taiwan Indigenous Peoples
Religion and Writing
Chinese Overseas
Transmission of Chinese Tradition

The Chinese landscape is immense and highly diverse, both in altitude and topography. Its variety of natural environments has fostered a wide range of ethnic cultures. Han Chinese account for over 90% of China’s population, and, while concentrated in the plains, are spread throughout the nation. Mainland China is also home to 55 minority peoples, who live for the most part in the highlands or grasslands in southwest, northwest, and northeast China. In Taiwan, indigenous groups speaking diverse Austronesian languages live alongside Han Chinese. Chinese overseas all over the world regard China as their ancestral homeland. This exhibition introduces a diverse range of Chinese ethnic life ways. Taking into account historical and local characteristics, the exhibition explores livelihoods, costume, musical instruments, dwellings, crafts, religion and writing, Han Chinese marriage ceremonies and ancestor worship, Taiwan indigenous peoples, and Chinese overseas.

East Asia

Culture of Japan 1,460m²



Ritual, Festivals and Performing Arts
Okinawan Lives
Multiethnic Japan
Everyday Life

Stretching from Hokkaido in the north to Okinawa in the south, the long, narrow Japanese archipelago is blessed with a rich variety of ecological niches. The combination of diverse natural environments and contacts with neighboring cultures has resulted in formation of distinct local traditions. In addition, many people from other countries have also come to live in Japan in recent years, adding new elements to the mix. In this section we approach Japanese culture from four perspectives: Festivals and Performing Arts, Everyday Life, Okinawan Lives, and Multiethnic Japan.

Cross-cultural Exhibitions

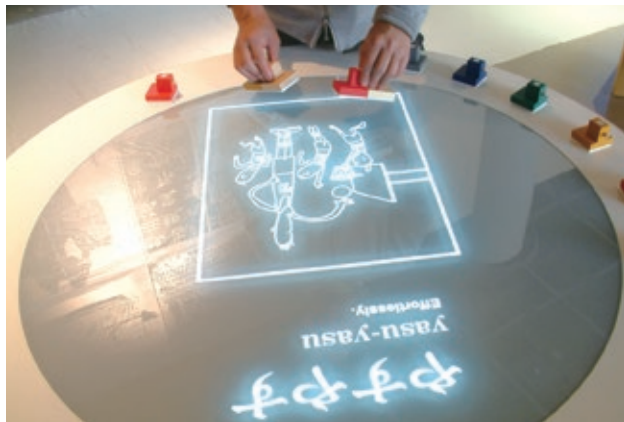
Music 550m²



Drums: A Spirited Sound **Gongs: The Sound of Power**
Oboe: Performing Sounds **Guitar: Sounds in History**

Through sounds, we humans convey messages, express emotions, know our surroundings, imagine far away times and places, inspire or console ourselves, and communicate with gods and spirits. With examples from all over the world, this exhibition shows how sounds and music are deeply related to our identity as humans.

Language 170m²



Components of Language
Language Diversity
Writing Systems of the World

Whenever people meet and interact, the need for communication arises and pieces of information are continuously exchanged through various means. Among these, language, shared exclusively by human beings, is a highly developed tool which enables us to express emotional states, describe our deepest thoughts, and to pass intellectual knowledge beyond space and over generations. Language is our irreplaceable heritage, reflecting our diverse cultures and serving as a window for understanding people's cognitive and creative abilities.

Information Zone

Introduction



The exhibits in the Introduction section are designed to enable visitors to experience directly how anthropologists and ethnologists think and how Minpaku exhibits could be explored. Here is where your global journey starts.

Videotheque/Minpaku Theater



Visitors can watch videos about ceremonies, performing arts, and lifestyles of people around the world, or about introducing the background of exhibition materials.

According to their purposes, they can select videos edited in approximately 15 minutes, multimedia programs, and valuable research videos (visual ethnography), that researchers have collected through fieldwork. In FY2022 the Minpaku Theater, was established with a large screen and monitors, to allow visitors to be immersed in the images. (There were 30,556 requests for Videotheque programs in FY2022.)

Discovery Space



Research Desk **Deepen Your Knowledge**
Voices from the Field **Connect to the World**
Touch the World **Widen Your Perspectives**

In the Discovery Space, visitors may search for more information about exhibits at the Research Desk. Materials related to Minpaku researchers' projects can be found at Voices from the Field. Touch the World provides an opportunity to handle as well as see exhibit materials, to gain a deeper understanding of them. Visitors are invited to learn more about the artifacts on exhibit, to satisfy their curiosity about what Minpaku researchers are studying, and to experience artifacts directly.

Special Exhibitions

The 50th Anniversary of the Establishment of Diplomatic Relations between Japan and Mongolia
“100 Years of Mongolia: Encounters through Photography”

March 17 – May 31, 2022

The National Museum of Ethnology
Project leader: SHIMAMURA Ippei

Welcome to the Mongolian world, different from the steppes and nomads. Western explorers photographed Urga, the sacred city of the living Buddha, and the exotic appearance of nomads 100 years ago. In contrast, contemporary photographer B. Injinaash has taken lively photographs of Ulaanbaatar, the capital city, where high-rise buildings stand close together and of people residing in the Gel Area surrounding the capital. This exhibition is a presentation of the theme of a chance encounter between the look of Western explorers 100 years ago and the “self-portrait” of a contemporary Mongolian photographer that goes beyond time and space.



“Homō loquēns ‘talking human’:
Wonders of Language and Languages”

September 1 – November 23, 2022

The National Museum of Ethnology
Project leader: KIKUSAWA Ritsuko

Under the theme of “languages,” which we often take for granted because of their ubiquity and familiarity, more than 120 domestic and international researchers from various disciplines—not only linguistics but also cultural anthropology, engineering sciences, education sciences, neuroscience, and cognitive psychology—cooperated and exhibited the wonders. As part of the exhibition, video artist YAMASHIRO Daisuke released his work, presenting impressions of languages to the public.



Thematic Exhibitions

“Slash-and-Burn Cultivation Viewed by SASAKI Komei:
From Itsuki Mura to the World”

March 10 – June 7, 2022

The National Museum of Ethnology
Project leader: IKEYA Kazunobu

The exhibition introduced the areas and environments in which slash-and-burn cultivation was practiced in Japan and around the world, along with the characteristics of slash-and-burn cultivation in the respective areas, as illustrated by photographs taken by SASAKI Komei, the second Director-General of the National Museum of Ethnology, particularly portraying slash-and-burn cultivation and the tools used in Itsuki Mura, Kumamoto Prefecture. One can consider how humanity and nature should coexist through slash-and-burn cultivation worldwide, emphasizing Itsuki Mura.



“Maritime People and Art of Their World:
Material Culture in Southeast Asia and Oceania”

September 8 – December 13, 2022

The National Museum of Ethnology
Project leader: ONO Rintaro

In the maritime milieu of Southeast Asia and Oceania, the People of the Sea have made their living on the islands and coastal areas of continents, maintaining a strong connection to the sea. Throughout their long history, many objects have been refined through their use in everyday life. Through an exploration of the diverse objects used by people living in the world of seas and islands, this exhibition portrays the artistic quality found in those objects and their commonality beyond the regions of Asia and Oceania.



Collection Exhibition

“Cormorant Fishing in Contemporary China: Techniques of Fishers”

June 30 – August 2, 2022

The National Museum of Ethnology
Project leader: UDA Shuhei

Cormorant fishing is a traditional method wherein cormorants are used to catch fish. This exhibition showcased photographs and videos related to cormorant fishing, taken by UDA Shuhei, the project leader, across China. Additionally, a cormorant fishing boat from the Museum's collection was also on display. Through this exhibition, we introduced the techniques and knowledge of cormorant fishing in China, which is not seen in Japan, and the relationship between cormorants and humans. And we also considered the ways fishers survive contemporary China with cormorants.



Traveling Exhibitions

“REGNUM IMAGINARIUM: Realm of the Marvelous and Uncanny”

April 29 – June 26, 2022

Kochi Prefectural Museum of History
Project leader: YAMANAKA Yuriko

In pre-modern Europe and the Middle East, “marvels” ---mysterious creatures and phenomena that were thought to exist in the remote corners of the world, such as mermaids and unicorns--- were considered part of the knowledge about the cosmos. In East Asia, the concept of *kai'i*, the “uncanny,” was developed to explain anomalous phenomena and strange creatures. In this exhibition, we embarked on a journey through the labyrinth of human imagination by showcasing fabulous creatures created by people from around the world. Materials unique to Kochi were added to the exhibits from the Museum’s collection which had been selected for the 2019 Special Exhibition, thus connecting local cultures to global contexts.



“Beads in the World”

July 30 – September 11, 2022

Ishikawa Nanao Art Museum
Project leader: IKEYA Kazunobu

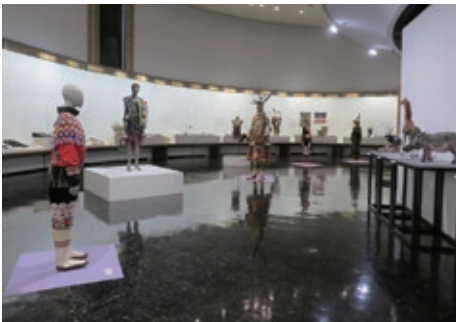
Seeing beads as one of the masterpieces we, humanity, have created, this exhibition introduced the attraction of beads worldwide, with the keywords “connect, decorate, and show,” particularly addressing the materials in the Museum’s collection. Approximately 200 examples of beadwork were displayed in one hall, including a Buddhist painting reproduction featuring bead decorations by painter HASEGAWA Tohaku, who was born in Nanao City and was active during the Momoyama period, along with materials excavated from archaeological remains in Noto.



November 15, 2022 – January 15, 2023

The Shoto Museum of Art
Project leader: IKEYA Kazunobu

Shell beads are among the oldest decorations used by humans, in which beads are strung with threads after creating holes in various materials. Those materials included clay, stone, and glass, with which masks, clothes, decorations, and dolls were made all over the world using the respective qualities of the materials. For this exhibition, beads from all times and places were gathered in large quantities, primarily from the Museum’s collection. Through the beauty of the beads, which sometimes give off a unique charm, the exhibition made us aware of the environmental, cultural, and historical differences in the world.



Exhibitions in 2023

Special Exhibitions

“‘Arte Popular’: The Creative and Critical Power of Latin Americans”

March 9 – May 30, 2023

The National Museum of Ethnology
Project leader: SUZUKI Motoi

“Divine Affection: Enchanting Images of Hindu Deities”

September 14 – December 5, 2023

The National Museum of Ethnology
Project leader: MIO Minoru

Thematic Exhibition

“Screen Prints of Canada’s Northwest Coast Peoples”

September 7 – December 12, 2023

The National Museum of Ethnology
Project leader: KISHIGAMI Nobuhiro

Collection Exhibition

“The Hunter’s View of the Earth”

July 6 – August 8, 2023

The National Museum of Ethnology
Project leader: IKEYA Kazunobu

Traveling Exhibitions

“REGNUM IMAGINARIUM: Realm of the Marvelous and Uncanny”

March 11 – May 14, 2023

Fukuoka City Museum
Project leader: YAMANAKA Yuriko

“‘UNIVERSAL MUSEUM’: Exploring the New Field of Tactile Sensation”

April 1 – May 7, 2023

The OHK Okayama Broadcasting Station at KURUN HALL
Project leader: HIROSE Koujiro

Cooperative Exhibition

“Slash-and-Burn Culture in the Kyushu Mountains”

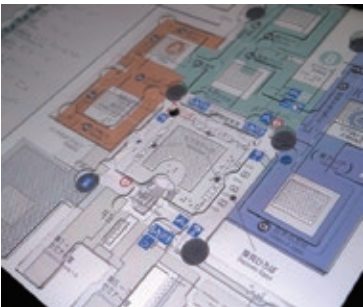
October 7 – December 3, 2023

Historia Terrace Itsukidani
Project leader: IKEYA Kazunobu

The Digital Tactile Map [National Museum of Ethnology Touch Panel Guide]

The digital tactile map, National Museum of Ethnology Touch Panel Guide, is an interactive tactile map that makes information in the museum accessible to people, including for those with visual disability. The finger guide placed on the touch panel display and a voice guide are linked to provide tactile and audio information about the person’s location in the museum and about the exhibitions. Currently, three of these touch panel guides are placed in the exhibition halls of Minpaku.

This digital tactile map was developed in Minpaku’s Cultural Resource Projects. Members who led the design development of this project were Professor HIRAI Yasuyuki of the Graduate School of Design at Kyushu University and Associate Professor FUMOTO Koichiro of the Faculty of Global and Science Studies, Yamaguchi University.



The Digital Tactile Map was Awarded Various Prizes [National Museum of Ethnology Touch Panel Guide]

Data Station

Go on an exclusive virtual museum tour of past special exhibitions and permanent exhibitions captured as a panorama movie, and view a database of artifacts in the Museum’s collection.



Virtual Museum

A virtual museum is available on the Minpaku website. The Main Exhibition Halls were photographed wall-to-wall using a super-wide angle camera. Each exhibition hall can be viewed from various angles on a PC or smartphone. Commentary videos are available for some exhibits. Panorama movies of exhibition records featuring special exhibitions and thematic exhibitions held by Minpaku in the past is also available for viewing.

Released in FY2022

Special Exhibition “100 Years of Mongolia: Encounters through Photography”

Thematic Exhibition “Slash-and-Burn Cultivation Viewed by SASAKI Komei: From Itsuki Mura to the World”

Thematic Exhibition “Maritime People and Art of Their World: Material Culture in Southeast Asia and Oceania”



Virtual Museum (Africa exhibition)



Virtual Museum (Thematic Exhibition “Maritime People and Art of Their World: Material Culture in Southeast Asia and Oceania”)

Awards

“Japanese Society for the Science of Design 2021 Annual Product Award”

Organizer: Japanese Society for the Science of Design

Award given to: The paper on the Digital Tactile Map (National Museum of Ethnology Touch Panel Guide):
“Design Development for the National Museum of Ethnology Touch Panel Guide”

Award given to: FUMOTO Koichiro (Yamaguchi University), HIRAI Yasuyuki (Kyushu University),
HIDAKA Shingo (National Museum of Ethnology)

“Japan Typography Almanac 2023” Prize Winning

Organizer: Japan Typography Association

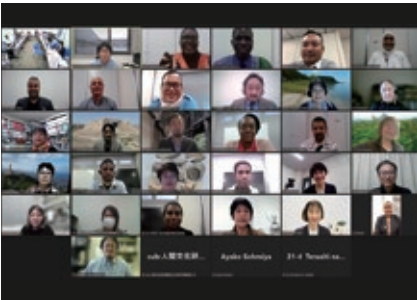
Award given to: Three posters for Special Exhibition “100 Years of Mongolia: Encounters through Photography”

Award given to: National Museum of Ethnology, Injinaash, Bor (Photographer), Sakari Pälä (Photographer)
*The Ethnographic Picture Collection, Finnish Heritage Agency, SATO Disuke (Designer)

JICA Knowledge Co-Creation Program:
Implementation of “Museums and Community Development”

Because of the COVID-19 pandemic, the 2020 program was postponed to the subsequent year after consulting with JICA, which was entrusted with program implementation. Therefore, the 2021 program was implemented online. The 2022 program was held by inviting program participants for the first time in three years. In 2022, some who participated in the online program the previous year (2021) came to Japan to attend the program with other participants. From October 31 to December 13, 2022, 13 program participants from eight countries and regions (Cambodia, Egypt, Iraq, Jordan, Kiribati, Papua New Guinea, Timor-Leste, and Zambia) received lectures and practice sessions to gain a thorough understanding of museum activities.

Despite undergoing constructive changes in its name and operational style, the program’s purpose has remained consistent: to promote international exchange through museums. As of March 2023, the program had 286 program graduates and observers from 64 countries and regions worldwide. This program will continue to contribute to the expansion of international museology networks.



Museum Report



Practical Program (Packing and Transportation)



Lecture at Minpaku



Study trip to Miyajima



Experience wearing traditional Ainu clothing



Closing Ceremony

Minpaku Fellows

This is a network of international researchers who have worked with or for the Museum in the past, and foreign and domestic research institutions with close ties to the Museum. In order to promote awareness and improve information exchange, our English Newsletter (*MINPAKU Anthropology Newsletter*) is published regularly.

There are approximately 1,000 members in the Minpaku Fellows program.

Minpaku Fellows Breakdown by Area as of March 31, 2023

Regions	Number of Fellows
Asia, Middle East, Oceania	620
Europe	154
North America, Latin America and the Caribbean	191
Africa	78
Total	1,043

The Museum has been working to build networks to ensure the more systematic and viable use of cultural resources through academic collaboration with museums and universities, both in Japan and overseas. The Museum is also promoting various projects and activities that benefit local communities and international society, in cooperation with many organizations.

Min-pack

In order to contribute to a better understanding of our research, the Museum has developed a learning-kit for children, called Min-pack. It is lent to schools and other educational institutions. Min-pack is a learning kit carried in a suitcase that contains a variety of materials including clothes, musical instruments, and everyday commodities, of the world’s countries and regions, with children’s learning aids. 25 packs and 15 types are now available.

Lending period: April 8, 2022 - March 15, 2023
FY2022 Number of loans: 189 Total number of users: 29,066

- Living in the Extreme North: Anoraks and Duffle Coats from the Inuit in Canada
- Treasure Box of the Andes: The Festivals and Life of the Peruvian Southern Highlands
- Costumes in Java: Religion and Tradition
- Indian Costumes: Saris and Kurtas
- The Arabian Nights
- Islam and Life of the Arab World
- Seoul Style: A Day in the Life of Children in Seoul
- Seoul Children After-school
- Ainu Culture Encounter
- Expedition to the Steppes of Mongolia
- The 2011 Umesao Tadao Exhibition: Tools of Knowledge Production (This uses artifacts from the Special Exhibition “Umesao Tadao” held in 2011.)
- Muslims around the World: Daily Prayers
- Muslims around the World: Contemporary Life
- Ethiopian Coffee Ceremony
- Wearing Ethiopia: the Traditional Clothing of Amhara People



Min-pack
“Muslims around the World: Daily Prayers ”



Min-pack
“Ethiopian Coffee Ceremony ”

Workshops

Workshops are organized to introduce the culture of the world through hands-on experiences (crafts) and to share research outcomes of the museum researchers with society.

Date	Workshop	Lecturer
April 23, 2022	Workshop Related Thematic Exhibition “Life in the Forests: the SDGs from the Perspective of Shifting Cultivation.”	IKEYA Kazunobu OBAYASHI tatsuya (Caricaturist, Illustrator)
May 3-4, 2022	Workshop Related Special Exhibition “Let’s Make Mongolian Hats Together!”	SHIMAMURA Ippei SUWA masakazu (Workshop artist)
July 30, 2022	Kids Workshop for Summer Holiday “Challenge Fieldwork! Practices for Caring Museum Collection”	SUEMORI Kaoru
September 18, 2022 November 27, 2022	Workshop Related Thematic Exhibition “Handcrafts for Island Living: Let’s Make Something from Pandanus”	ONO Rintaro Peter J MATTHEWS IKEHARA Michiko(Director, Yachimunkan Studio, Ishigaki Island) and others
September 23, 2022 October 29, 2022 November 12, 2022	Workshop Related Special Exhibition “Escape Game: Chinese Version”	Osaka Ohtani University
December 25, 2022 January 7-8, 2023	Year-end and New Year Exhibition Event, “Let’s Find Rabbits at Minpaku!”	Information Planning Section



“Let’s Make Mongolian Hats Together!”



“Challenge Fieldwork! Practices for Caring Museum Collection”



“Handcrafts for Island Living: Let’s Make Something from Pandanus”



“Let’s Find Rabbits at Minpaku!”



“Let’s Find Rabbits at Minpaku!”

Worksheets

We have worksheets for themed tours, special or thematic exhibitions, and self-learning depending on the visitor’s request. The related details can be found on our website. These are downloadable for free use. FY2021 saw the addition of “Let’s explore Minpaku – Islam” and its commentary, “Activity cards (eight types),” and “Activity card usage guide for school teachers”.

Minpaku at Home

A special page, “Minpaku at home,” was created on the Minpaku website on March 9, 2020, for children and others who had to stay at home because of the COVID-19 pandemic. This page features a virtual museum for viewing exhibits online and paper craft, “pop-up lion dance and lucky coloring,” worksheets, “paper beads,” various reading materials, and other items used in previous workshops. In 2022, we added the Minpaku worksheet “Minpaku Cheat Sheet.”

Conduct of *Kamuynomi*, and Craftmanship Training for the Ainu Association of Hokkaido

The Museum is carrying out two projects under an agreement with the Ainu Association of Hokkaido, a public interest incorporation. One is an implementation of the *Kamuynomi* rite. *Kamuynomi* is an Ainu word meaning ‘prayer to the deities’.

By implementing the *Kamuynomi* rite, the Museum aims to ensure proper storage of its Ainu collection and handing down of this traditional rite to future generations. In the past, this rite was performed privately by the late Mr. KAYANO Shigeru acting as the priest. Since FY2007, regional members of the Hokkaido Ainu Association (currently the Ainu Association of Hokkaido) gave public performances of traditional Ainu dance together with the *Kamuynomi* rite. Programs scheduled for 2020 and 2021 were canceled in light of the COVID-19 pandemic. In 2022, the program was held with the participation of only those involved in the program and with the cooperation of the Toyoura Ainu Association.

Another project is reception of traditional craft engineers dispatched by the Ainu Institute as foreign researchers which will help the Museum to further improve its academic research and collection on Ainu culture, and also promote the cultural development of Ainu people. To prevent the spread of COVID-19, the project was not implemented in 2022.



The Kamuynomi Rite (FY2022)

Music Day at Minpaku

World Music Day, a festival which began in France to celebrate the summer solstice with a musical performance, was introduced in Japan in 2002. On this day, various musical events are held nationwide. Since 2003 the Museum, in support of the event, has been making space available for concerts to members of the public who enjoy music. On June 26, 2022 (Sun), the first Music Day in three years was held in the National Museum of Ethnology Auditorium. In all, ten groups and individuals performed with various instruments, accompanied by dance performances.



Museum-School Partnership Program

To introduce tools that facilitate preparation and learning, before and after using Minpaku as a field trip or an excursion, we provide “Prior Visit Guidance” twice a year in spring and autumn in the Museum, promoting the use of museums in lessons. The 2022 spring program was canceled to prevent the spread of COVID-19. Nevertheless, the autumn program was conducted successfully with the participation of 40 individuals belonging to 18 groups. We restarted the Work Experience Program for junior high school students, which was canceled in 2021, by accepting six individuals from two schools.

Volunteer Activities

Minpaku Museum Partners (MMP) is a group of volunteers established in September 2004, to assist the Museum in the planning and implementation of its activities.

MMP is promoting a widely various range of activities in cooperation with the Museum, such as “Main Exhibition Hall Guidance for Visually-Impaired Persons” (a program to support them to experience the exhibitions in the hall), “Wakuwaku Taiken at Minpaku” (a hands-on tour mainly for elementary school children), and craft workshops for general visitors. MMP also actively involves itself in workshop festivals and volunteer exchange programs outside the museum to deepen the relationship with other museums and facilities. As countermeasures against COVID-19, some programs and activities were suspended in 2020 and 2021. Nevertheless, all the activities have resumed since August 2022.



MMP Workshop “Let’s Make Memories in The Merry Cemetery: 2022”



Performance “West African Story Time” (FY2022)



Wakuwaku Taiken at Minpaku (FY2022)



Main Exhibition Hall Guidance for Visually-Impaired Persons (FY2022)



Experiencing Braille at the Workshop (FY2022)

Minpaku Seminars

On the third Saturday of every month, the Museum’s academic staff and others give lectures in plain language to the general public on the newest research findings.

FY2022 Total Attendance: 1,360 Online (Maximum number of simultaneous connections): 188 (No.520, No.521)

□ indicates seminars associated with special exhibitions ○ indicates seminars associated with thematic exhibitions △ indicates seminars associated with collection exhibitions

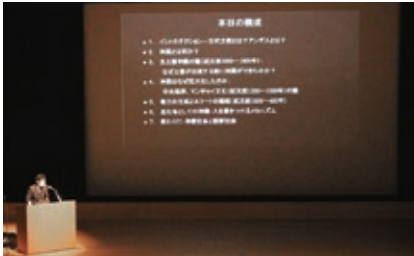
No.	Date	Lecturer	Title
520	April 16, 2022	TERAMURA Hirofumi	Life ways and Religion in Ancient Oasis Cities: From an Excavation at the Kafir-kala Site in Uzbekistan.
□ 521	May 21, 2022	B.Injinaash (Photographer), MINATO Chihiro (Photographer, Tama Art University), KAWASE Ittushi, SHIMAMURA Ippei	Contemporary Mongolia through the Eyes of B. Injinaash
522	June 18, 2022	NAKAGAWA Osamu	Understanding Globalization from the Case of Hmong Refugees in France
△ 523	July 16, 2022	UDA Shuhei	The Mystery of Cormorant Laying Eggs: Solving a Mystery after Fieldwork
524	August 20, 2022	ITO Atsunori	Indigenizing Minpaku Museum
○ 525	September 17, 2022	ONO Rintaro	Maritime Culture in Island Southeast Asia and Oceania-Fishing gears, Canoes, and Ornaments
□ 526	October 15, 2022	KIKUSAWA Ritsuko, KAWASE Itsushi, YAMASHIRO Daiki (Twelve Ink., Kyoto University of the Arts)	A Jam Session between Art and Academia
□ 527	November 19, 2022	YOSHIOKA Noboru	Do Field Linguistics around Us
528	December 17, 2022	MATSUMOTO Yuichi	A Civilization Emerged by Monumental Construction Projects: Ceremonial Architecture of the Ancient Andes
529	January 21, 2023	NISHIO Tetsuo, OKAMOTO Yasuko (Pianist), OKAMOTO Naoko	The Arabian Nights and Its Influence upon the Musical Landscape in Europe
530	February 18, 2023	MORI Akiko	Following the Trajectory of Family Farming: from my Fieldwork of Austria
□ 531	March 18, 2023	SUZUKI Motoi	Arte Popular: The Creative and Critical Power of Latin Americans



No.522 “Understanding Globalization from the Case of Hmong Refugees in France”



No.523 “The Mystery of Cormorant Laying Eggs: Solving a Mystery after Fieldwork”



No.528 “A Civilization Emerged by Monumental Construction Projects: Ceremonial Architecture of the Ancient Andes”

Minpaku Weekend Salon: A Chat with a Researcher

To better understand our research, this event provides an opportunity for the public to talk directly with research institute staff in the Museum’s exhibition hall. The Minpaku Weekend Salon was launched in FY2007, as part of the Museum’s 30th Anniversary project. The Salon was held in a Minpaku seminar room in 2022 to prevent the spread of COVID-19. However, since January 2023, it has been moved to Navi-Space, a Minpaku exhibition hall.

Special Lectures and Performances

FY2022 Total Attendance: 313 Online (Maximum number of simultaneous connections): 437

Performing arts of the world’s peoples are staged, with the aim of deepening understanding of cultural anthropology and ethnology among the public.

Transmission of Hindustani Classical Music In Japan

Date June 11, 2022
Lecturer OKADA Emi
Commentator OKADA Emi
Performers Amit Roy (Sitar (plucked string instrument) player)
Kul Bhushan Bhargava (Tabla (percussion instrument) player)
NAKAGAWA Yuji (Sarangi (plucked string instrument) player)
Glen Kniebeiss (Tabla (percussion instrument) player)

Attendance 138

Online (Maximum number of simultaneous connections) 315

Rhyme Culture in Mongolia : From Oral Literature to Hip Hop

Date November 26, 2022
Lecturer SHIMAMURA Ippei
Commentator SHIMAMURA Ippei
Performers D. Sosorbaram (Singer, Actor, and Director)
DESANT (Rapper)
Gennie (Rapper)

Attendance 175

Online (Maximum number of simultaneous connections) 122



Minpaku Film Shows

Valuable films on cultural anthropology and ethnology, hardly available in public, are shown with commentary by researcher.

FY2022 Total Attendance: 1,338 Online (Maximum number of simultaneous connections): 253

Date	Lecturer	Title	Attendance	Online (Maximum number of simultaneous connections)
April 30, 2022	IKEYA Kazunobu NOMOTO Kanichi (Professor Emeritus, KINDAI University) KAWANO Kazuaki (Specialist staff of Reimeikan, Kagoshima Prefectural Center for Historical Materials)	Japanese Culture through Slash-and-Burn Cultivation	134	
May 5, 2022	SHIMAMURA Ippei KONAGAYA Yuki	Veins of the World	170	
October 8, 2022	YOSHIOKA Noboru SAGARA Keiko LANESMAN, Sara (Israeli sign language instructor) MORITA Akira (Vice-principal, Meisei Gakuen)	Signing	150	
November 3, 2022	KIKUSAWA Ritsuko SAGARA Keiko ODATE Nobuhiro (Movie Director) ONAKA Tomoya (Representative of NPO Silent Voice) CHIJIIWA Keiko (Video creator) SASAKI Akiko (Silent film narrator)	BONFIRE	169	

Minpaku Visual Ethnography Theater

Date	Lecturer	Title	Attendance	Online: Maximum number of simultaneous connections
January 22, 2023	KURODA Kenji KAMINO Chie YAMANAKA Yuriko SUGIURA Yasuhiro (<i>Ise-daikagura Kōsha</i>) SAITO Shin (<i>Ise-daikagura Kōsha</i>)	Yet, the Tour Goes On	35	65
January 28, 2023	KURODA Kenji FUKUOKA Shota TOGARI Yasuko (Part-time lecturer, Tokyo University of Foreign Studies)	Shadow Puppet Theater in Kelantan, Malaysia	32	67
February 5, 2023	KURODA Kenji HAN Min	Ancestor Worship and Ancestor Shrines of the Han People	37	62
February 11, 2023	KURODA Kenji TERAMURA Hirofumi	The Life Ways in Oasis Cities	31	59

Minpaku World Cinema

By selecting appropriate movies for theme “Thought on The Future of Humanity from Films”, the Museum offers a series of film showings accompanied by researcher commentary.

No.	Date	Lecturer	Title	Attendance
51	July 9, 2022	SUGASE Akiko FUKAMI Kikue (Visiting Researcher, National Museum of Ethnology)	Captain Fantastic	153
52	September 24, 2022	SUGASE Akiko SUGIMOTO Yoshio (Professor Emeritus, National Museum of Ethnology)	Lage Raho Munna Bhai	176
53	January 14, 2023	SUGASE Akiko IKEYA Kazunobu	Honeyland	251

Campus Members

This membership program is aimed at providing opportunities to learn about cultural anthropology and ethnology through cooperation between the National Museum of Ethnology and educational institutions such as universities.

Member schools receive privileges such as participation in events, including exhibition tours, special lectures and performances, and movies free of charge and discounts at the Museum Shop.

Member schools in 2022

Osaka University, Kyoto University, The Ristumeikan Trust, Tsukamoto Gakuin, Doshisa University (Faculty of Global and Regional Studies, Graduate School of Culture and Information Science, Faculty of Culture and Information Science), Senri Kinran University, Otemon Gakuin University (Faculty of Letters, Faculty of International Studies)

Related Activities

In 2022, we implemented “What is Life Like Around the World-Korea” as a cooperative event in the cooperative project with Forest of Reading, Matsubara Civic Library “National Museum of Ethnology × Forest of Reading, Matsubara Civic Library” (January 29-February 12). During this period, we held a participatory event called “Korean Culture Collecting Rally” as a cooperative workshop and a hands-on workshop called “Rub-a-dub, *gung tta gung!* Let’s Beat out Korean Rhythms with Cardboard Drums!”



Data Collection

History

1935	A plan to establish an ethnological museum of Japan as an incorporated foundation is developed under the leadership of SHIBUSAWA Keizo and SHIRATORI Kurakichi.
1964	The Japanese Society of Ethnology, the Anthropological Society of Nippon, the Japanese Archaeological Association, the Folklore Society of Japan, and the Japanese Association of Ethnology jointly submit to the Minister of Education and other relevant authorities a request to establish a national ethnological research museum.
1972	A research council (chaired by KUWAHARA Takeo) conducts a feasibility study on the establishment of a National Ethnological Research Museum. A basic concept plan for the museum is submitted to the Minister of Education.
1973	A preparatory council for the establishment of a National Ethnological Research Museum (tentative name) and a preparation office are set up.
1974	The National Museum of Ethnology is founded under the “Law to amend part of the National School Establishment Law” (No. 81, 1974), with an Administration Department, an Information and Documentation Center, and five Research Departments. Collecting artifacts from overseas was started in Papua New Guinea.
1975	A collection of folklore reference materials (28,432 items) owned by the former Ministry of Education Archive were transferred from the National Institute of Japanese Literature.
1977	The Museum buildings (28,778m ²) are completed and the surrounding area is landscaped. An opening ceremony is held. Exhibitions on Oceania, the Americas, Europe, Africa, West Asia, Music, Language, Southeast Asia, and East Asia (Japanese Culture), as well as the Videotheque are opened to the public.
1978	Long-term and carefully organized “Special Projects” are started as key components of ethnological research.
1979	The fourth Exhibition Hall (1,272m ²), which accommodates an additional exhibition on East Asia (Japanese Culture), is completed and opened to the public. Exhibitions on Central and North Asia, and East Asia (Ainu Culture) are opened to the public.
1981	The Auditorium (3,704m ²) is completed.
1983	The eighth Exhibition Hall and other facilities (4,816m ²) are completed. The exhibition on East Asia (Cultures of the Korean Peninsula and Regional Cultures of China) is opened to the public.
1984	The 10th anniversary of the Museum’s founding is celebrated. “A Ten-Year History of the National Museum of Ethnology” is published.
1987	The 10th anniversary of the Museum’s opening to the public is celebrated.
1989	The School of Cultural and Social Studies (with the Department of Regional Studies and the Department of Comparative Studies) of the Graduate University for Advanced Studies is established within the Museum. (It has been reorganized as Anthropological Studies of Graduate Institute for Advanced Studies since 2023AY.) The Special Exhibition Hall and the library stacks (5,292m ²) are completed. The first special exhibition, “The Great Andes Civilization: Inca, the Reviving Empire of the Sun” is organized to celebrate the completion of the Special Exhibition Hall.
1993	The main Museum building is expanded and a joint research facility (891m ²) is completed.
1994	The 20th anniversary of the Museum’s founding is celebrated. The Japan Center for Area Studies is established. (Discontinued in FY2005)
1995	Owing to damage caused by the Hanshin-Awaji Great Earthquake, the entire collection is closed for 45 days. (Earthquake-proof reinforced construction was retrofitted between 2002 and 2003) The Center of Excellence (COE) program is established: “Pioneering Research for the Development of New Ethnological Studies Using Multimedia in the Global Era.” (Concluded at the end of FY1999)
1996	The seventh Exhibition Hall (6,439m ²) is completed. Exhibitions on Language and Southeast Asia are renovated. An audio-visual gallery, the Materiatheque, and the exhibition on South Asia are opened to the public.
1997	The 20th anniversary of the Museum’s opening to the public is celebrated.
1998	Following the enactment of the Ministerial Ordinance to revise part of the administrative rules for the Inter-University Research Institute (Ordinance of the Ministry of Education No. 24 of 1998), the five research departments are reorganized into four research departments and one research facility.
1999	The Minpaku “Digital Guide and Study Area” are completed and opened to the public.
2000	A renovated exhibition on the Cultures of the Korean Peninsula is opened. Partial renovation of the Museum exhibitions continued until 2003.
2004	As authorized by the National University Corporation Act (Act No.112,2003), the National Institutes for the Humanities, as part of the Inter-University Research Institute, is established. The former system of 4 research departments and 1 research center is reorganized into a system with 3 research departments and 2 centers. To facilitate joint research, screening by the Joint Research Committee, whose members include representatives from the research community, is established and the scope of the call for joint research applications expanded. Editing of a book entitled A Thirty-Year History of the National Museum of Ethnology is one of the earliest commemorative events started in preparation for the 30th anniversary of the Museum’s founding. (The book is published in March 2006.)
2006	The Minpaku Collections Help Desk opens.
2007	The 30th anniversary of the Museum’s opening to the public is celebrated.
2008	A collaborative agreement is signed with the Japanese Society of Cultural Anthropology.
2009	After renovation, the Africa and West Asia galleries are re-opened to the public.
2010	After renovation, the Music and Language galleries are re-opened to the public. New systems are consolidated including the establishment of the Center for International Academic Exchange.
2011	After renovation, the Oceania and Americas galleries are re-opened to the public.
2012	After renovation, the Europe gallery and Information Zone are re-opened to the public.
2013	After renovation, the East Asia–Culture of Japan gallery is re-opened to the public. Consolidation of new systems, including the Audit Office and Umesao Archives.
2014	After renovation, the East Asia–Culture of the Korean Peninsula, Regional Cultures of China, and Culture of Japan galleries are re-opened to the public.
2015	After renovation, the South Asia and the Southeast Asia galleries are re-opens to the public.
2016	After renovation, the Central and North Asia, and the East Asia–Ainu Culture galleries are re-opened to the public.
2017	Renovation of the Main Exhibitions was completed,anniversary ceremony is celebrated. The former system of 3 research departments and 2 research centers is reorganized into a system with 4 research departments and 1 research center. The 40th anniversary of the Museum’s opening to the public is celebrated. Joint-Use Facilities for Scientific Research is established.
2018	The exhibition hall was closed for 66 days because of damage caused by the Osaka northern district earthquake. The library was closed for 49 days.
2020	The National Museum of Ethnology was closed for 111 days because of the novel coronavirus disease (COVID-19) pandemic.
2021	The National Museum of Ethnology was closed for 59 days because of the novel coronavirus disease (COVID-19) pandemic.

Former Directors-Generalas of April 1, 2023

First Director-General June 1974–March 1993 UMESAO Tadao* <i>Ethnology, Comparative Study of Civilizations</i>	Second Director-General April 1993–March 1997 SASAKI Komei* <i>History of Agriculture in East and South Asia</i>	Third Director-General April 1997–March 2003 ISHIGE Naomichi <i>Cultural Anthropology</i>	Fourth Director-General April 2003–March 2009 MATSUZONO Makio <i>Social Anthropology</i>	Fifth Director-General April 2009–March 2017 SUDO Ken’ichi <i>Social Anthropology</i>
---	---	--	---	--

Professors Emeriti as of July 1, 2023

1984– SOFUE Takao* <i>Psychological Anthropology</i>	1998– WADA Shohei <i>Comparative Study of Cultures, Anthropology of Africa</i>	2006– ISHIMORI Shuzo <i>Cultural Development Studies, Anthropology of Tourism, Museum anthropology, Cultural Resource Management; Micronesia, Polynesia, Southeast Asia, Japan</i>	2016– SASAKI Shiro <i>Socioeconomic History of Reindeer-Breeders and Forest Hunters; Northern Asia, Siberia</i>
1985– IWATA Keiji* <i>Cultural Anthropology</i>	2000– SHIMIZU Akitoshi <i>Comparative Study of Families, Study of Oceania</i>	2006– NOMURA Masaichi* <i>Nonverbal Communication, Ethnology of Mediterranean Europe</i>	2016– SUGIMOTO Yoshio <i>Social Anthropology; Sri Lanka, South India</i>
1986– KATO Kyuzo* <i>Ethnic History in North and Central Asia</i>	2001– HATA Nobuyuki <i>Economic Anthropology, Anthropology of Africa</i>	2007– OMORI Yasuhiro <i>Ethnology, Visual Anthropology</i>	2017– SUDO Ken’ichi <i>Social Anthropology</i>
1988– ITO H Mikiharu* <i>Anthropology of Religion</i>	2001– KURODA Etsuko <i>Theory of Ethnicity and Social Culture, Anthropology of Central America</i>	2007– YAMAMOTO Norio <i>Ethnobotany, Ethnology, the Andes, the Himalayas</i>	2017– TAKEZAWA Shoichiro <i>African History, History of Anthropological Thought; West Africa</i>
1989– KIMISHIMA Hisako* <i>Chinese Folklore</i>	2001– SAKIYAMA Osamu <i>Linguistic Anthropology, Oceanic Linguistics</i>	2009– MATSUZONO Makio <i>Social Anthropology</i>	2017– TSUKADA Shigeyuki <i>Ethnohistory; Southern China</i>
1990– WADA Yuiti* <i>Linguistic Anthropology</i>	2002– KOYAMA Shuzo* <i>Ethnoarchaeology</i>	2010– MATSUYAMA Toshio <i>Ethnology of Contemporary Australian Aboriginal Society</i>	2018– INTOH Michiko <i>Prehistory of Oceania; Oceania, Island Southeast Asia</i>
1991– TARUMI Minoru* <i>Anthropology in Spatial Domains</i>	2002– MORITA Tsuneyuki <i>Conservation Science, Ethno-technology</i>	2011– NAGANO Yasuhiko <i>Historical Linguistics, Lexical Semantics; Tibeto-Burman Area</i>	2018– YOKOYAMA Hiroko <i>Cultural Anthropology, Chinese Society and Culture</i>
1992– SUGIMOTO Hisatsugu* <i>Cultural Geography, Cultural Anthropology</i>	2003– ISHIGE Naomichi <i>Cultural Anthropology</i>	2012– AKIMICHI Tomoya <i>Maritime Anthropology, Ecological Anthropology; Oceania,Southeast Asia, Japan</i>	2020– TERADA Yoshitaka* <i>Ethnomusicology, Study of South India</i>
1993– KATAKURA Motoko* <i>Social Geography, Ethnology</i>	2003– KURITA Yasuyuki <i>Museum Anthropology, Study of Bhutan</i>	2012– NAKAMAKI Hirochika <i>Japanese Religion, Brazilian Company Culture; Japan</i>	2021– DEGUCHI Masayuki <i>Third Sector Research, Civil Society Studies</i>
1993– OGYU Chikasato* <i>Cultural Structure of Latin America</i>	2003– SUGITA Shigeharu <i>Computer Ethnology, Study of Civilization</i>	2014– KOBAYASHI Shigeki <i>Museum Science, Cultural Anthropology</i>	2022– HAYASHI Isao <i>Social Structure, Cosmology, Risk and Disaster; Melanesia, Polynesia, Japan</i>
1994– TAKEMURA Takuji* <i>Social Anthropology</i>	2004– KUMAKURA Isao <i>History of Japanese Culture</i>	2014– TAMURA Katsumi <i>Cultural Anthropology; Southeast Asia, East Asia</i>	2022– SEKI Yuji <i>South American Archaeology, Cultural Anthropology</i>
1995– CHOU Ta-sheng* <i>Theory of Material Culture</i>	2004– TACHIKAWA Musashi <i>Philosophy of Religion, Buddhist Thought</i>	2014– YOSHIMOTO Shinobu <i>Textile Arts and Technology; Asia, Africa, America, Europe</i>	2023– KONAGAYA Yuki <i>Cultural Anthropology</i>
1995– MATSUZAWA Kazuko <i>Social Anthropology</i>	2004– TANABE Shigeharu <i>Social Anthropology of Southeast Asia</i>	2015– KUBO Masatoshi <i>Ethno-Informatics, Computer Ethnology, Study on Aboriginal Australian Culture</i>	2023– MORI Akiko <i>Cultural Anthropology, Ethnography; Central Europe, Germany, Austria, Japan</i>
1996– DAIMARU Hiroshi* <i>Comparative Study of the History of Lifestyles, Based on Clothing, etc.</i>	2004– YAMADA Mutsuo* <i>History of Latin America, Area Study of Latin America</i>	2015– SHOJI Hiroshi* <i>Finno-Ugric Linguistics, Ethnolinguistics, Language Policy; Northern Europe, China</i>	2023– NISHIO Tetsuo <i>Linguistics, Arab Culture; Middle East, North Africa</i>
1996– FUJII Tomoaki* <i>Ethnomusicology, Anthropology of Music</i>	2005– EGUCHI, Paul K.* <i>Oral Literature and Naterial Culture of the Fulfulde-speaking People, Cameroon</i>	2015– YASUGI Yoshiho <i>Linguistic Anthropology, Writing Systems, Mayan Civilization, Mesoamerica</i>	2023– SUZUKI Nanami <i>Cultural Anthropology, Culture of Medicine, Life-Design Studies, American and European Medieval Social History</i>
1997- SASAKI Komei* <i>History of Agriculture in East and South Asia</i>	2005– MATSUBARA Masatake <i>Social Structure, Turkey, Eastern Asia, Central Asia</i>	2016– ASAKURA Toshio <i>Social Structures in East Asia; Korea, Japan</i>	* Deceased
1997– SUGIMURA Toh* <i>Study of Ethno-arts</i>	2005– OHTSUKA Kazuyoshi <i>Aynu (Ainu) Culture, Material Culture of North Asian Food Gatherers, Paleoeecology, Prehistoric Subsistence, Japan</i>		

Note: Visiting Research Fellows and Overseas Visiting Fellows are not included in the numbers given for "Staff" members.

Category	Director-General	Prof.	Assoc. Prof.	Assist. Prof.	Project Prof.	Project Assoc. Prof.	Project Assist. Prof.	Subtotal	Administrative & Technical Staff	Total
Staff	1	25	21	7	0	0	1	55	50	105
Visiting Research Fellows		4	4					8		8
Overseas Visiting Fellows										0
Director-General	1							1		1
Audit Office									1(2)	1(2)
Office of Administration									28	28
Office of Information and Documentation		(1)							21(1)	21(2)
Research Departments		20	17	6	0	0	1	44		44
Center for Cultural Resource Studies		5	4	1				10		10

Parenthesis () shows the number of staff members holding two posts. The figure for administrative staff includes one project specialist.

Budget

FY2022

Revenue

Category	(Millions of yen)
Management Expenses Grants	2,861
Foundation	2,659
Others	202
Revenue	49
Admission fee	35
Others	14
Facilities	152
Grants-in-Aid for Scientific Research	288
Total	3,350

Expense

Category	(Millions of yen)
Salaries	1,144
Others	1,918
Education and research	489
Joint use	727
General management costs	550
Facilities	152
Grants-in-Aid for Scientific Research	288
Total	3,350

Note: These figures are from the revised budget include the carry-over from the previous fical year and exclude the carry-over to the next fiscal year.

FY2023

Category	(Millions of yen)
Management Expenses Grants	2,691
Foundation	2,496
Others	195
Revenue	49
Admission fee	35
Others	14
Facilities	24
Grants-in-Aid for Scientific Research	238
Total	3,002

Category	(Millions of yen)
Salaries	1,138
Others	1,626
Education and research	513
Joint use	677
General management costs	412
Facilities	24
Grants-in-Aid for Scientific Research	238
Total	3,002

Note: These figures are from the annual budget include the carry-over from the previous fiscal year

Facilities

The Basic Concept of the Museum Design

The Museum consists of low-rise buildings which naturally blend with the surrounding park environment. In designing the buildings, special emphasis was placed on the aesthetics of traditional Japanese architecture. Each floor of the Museum's main building is composed of several blocks. While the outer walls of these blocks have no openings for natural lighting, plenty of light is let in through the inner courtyards (patios). The patios provide a sense of openness and connection with the outer world, and are also used as open-air exhibition space.

Each floor is designed to be dedicated to a specific purpose, namely, storage on the first floor, exhibitions on the second, and research on the third and fourth. Elevators and staircases provide direct access to these floors. As the route is laid out in a manner that allows for a circular trip, visitors can either go through all the exhibitions, or choose to visit certain exhibitions of interest.

In addition, in order to make the Museum barrier-free and universally accessible, changes such as the installation of Braille labels are ongoing.

Total area of grounds: 40,821 m²
Ground area occupied by the museum buildings: 18,177 m²
Total floor space: 52,648 m²

Fourth Floor 7,207 m²
Offices of research staff members, laboratories, library stacks, and storage area.

Second Floor 16,830 m²
Exhibition halls, patio, central patio, multifunctional terminal room, administration offices, Special Exhibition hall and auditorium (seating capacity for 462 persons).

Main Exhibition Halls 10,938 m²

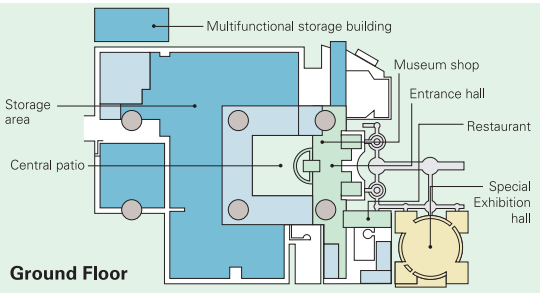
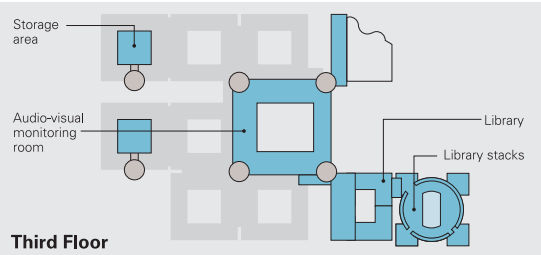
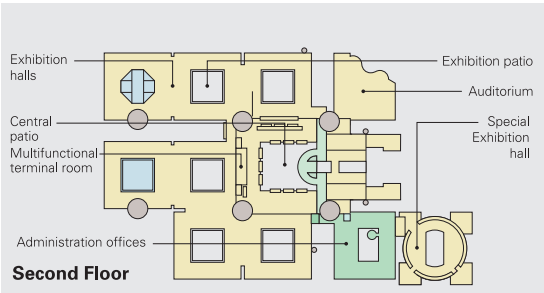
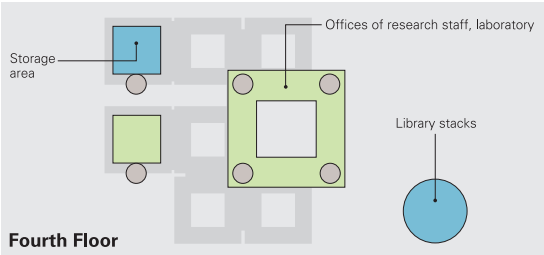
Third Floor 7,340 m²
The library, library stacks, audio-visual monitoring room and storage areas.

Ground Floor 17,410 m²
Entrance hall, central patio, restaurant, Special Exhibition hall, storage area and museum shop.

Special Exhibition Halls **Ground Floor** 851 m²
Second Floor 639 m²

Rooftop 846 m²

Basement 3,015 m²



Cooperative Agreements

Promotion of Research Coordination and Collaboration with Overseas Research Institutes

Minpaku has established academic agreements with overseas research institutions for research cooperation and collaboration. In FY 2022, the agreements were renewed with Shung Ye Museum of Formosan Aborigines (Taiwan), Institute of Anthropology and the Library, Zhejiang University (China), A:shiwi A:wan Museum and Heritage Center (USA), Research Center for Environmental Archaeology, Maritime Archaeology and Sustainable Culture, Research Organization for Archaeology, Research Organization for Archaeology, Language, and Literature, The National Research and Innovation Agency (Indonesia), and The National Folk Museum of Korea (Korea).

Name of the Institutes	Date of Agreement	Outline of Agreement
The Faculty of Forestry, Kasetsart University (Thailand)	November 22, 2019	Academic research and exchange in joint research, training, publishing, and exhibition projects.
National Museums of Kenya (Kenya)	November 7, 2019	Conducting collaborative research projects including those on museum objects possessed by the Parties; Organizing lectures, symposia and joint exhibitions; Exchange of research information and materials; Promoting cultural and museological exchange programs; and Cooperation in exchange of research staff.
Bangladesh Agricultural University (Bangladesh)	November 3, 2019	Academic research and exchange in joint research, training, publishing, and exhibition projects.
Institute of Archaeological Studies named after Yahyo Gulomov, Academy of Sciences of the Republic of Uzbekistan (Uzbekistan)	September 19, 2019	Cooperation in a variety of research and academic projects; collaborative research in archeology, anthropology, geography, conservation science and other related fields; exchange of visiting scholars, curators and/or other research staff, etc.
Research Center for Environmental Archaeology, Maritime Archaeology and Sustainable Culture, Research Organization for Archaeology, Research Organization for Archaeology, Language, and Literature, The National Research and Innovation Agency (Indonesia)	June 10, 2019	International joint archaeological research in Indonesia, to reporting programme effectiveness, activities, and research results, etc.
National Museums Board (Zambia)	August 12, 2018	International joint research, exchange of researchers, exchange of museum-related materials and information, etc.
National Museum of Iran (Iran)	November 8, 2017	International joint research, exchange of researchers, exchange of museum-related materials and information, etc.
University of British Columbia, Museum of Anthropology (Canada)	March 9, 2017	Academic cooperation and exchange on research projects, exhibitions, database development, etc.
Institute of Anthropology and the Library, Zhejiang University (China)	April 19, 2016	Contribution of references, exchange of human resources, joint research.
Vanderbilt University (USA)	January 15, 2016	Strengthening global collaborative research and organizing international symposia.
National Museum of Taiwan History (Taiwan)	October 16, 2015	Collaborative research and cooperation on exhibition development.
The Museum of Northern Arizona (USA)	July 4, 2014	Strengthening academic exchange and collaborative research.
The Institute of Ethnology and Anthropology, Chinese Academy of Social Sciences (China)	August 28, 2012	Along with other scholarly exchanges, Minpaku participates in research projects and the exchange or shared use of research materials, academic data and publications.
The National Museum of the Philippines (Philippines)	July 18, 2012	International joint research, exchange of researchers, exchange through projects that include joint research training, publication and exhibits.
A:shiwi A:wan Museum and Heritage Center (USA)	June 3, 2012	Scholarly cooperation, development of joint research projects, and exhibits or educational use of museum materials.
Taipei National University of the Arts (Taiwan)	May 15, 2009	Academic exchange, development of research projects, cooperation on museum exhibitions and educational initiatives, exchange of academic information and publications.
Inner Mongolia University (China)	September 22, 2008	Exchange between teaching faculty and researchers, development of research projects, cooperation on museum exhibitions and education, exchange of academic documents and publications.
The National Folk Museum of Korea (Korea)	July 11, 2007	Exchange between teaching faculty and researchers, development of research projects, cooperation on museum exhibitions and education, exchange of academic documents and publications.
Shung Ye Museum of Formosan Aborigines (Taiwan)	July 1, 2006	Collaborative research and cooperation on exhibition development.
The National University of San Marcos (Peru)	June 14, 2005	Joint research projects and academic exchanges in archaeology.

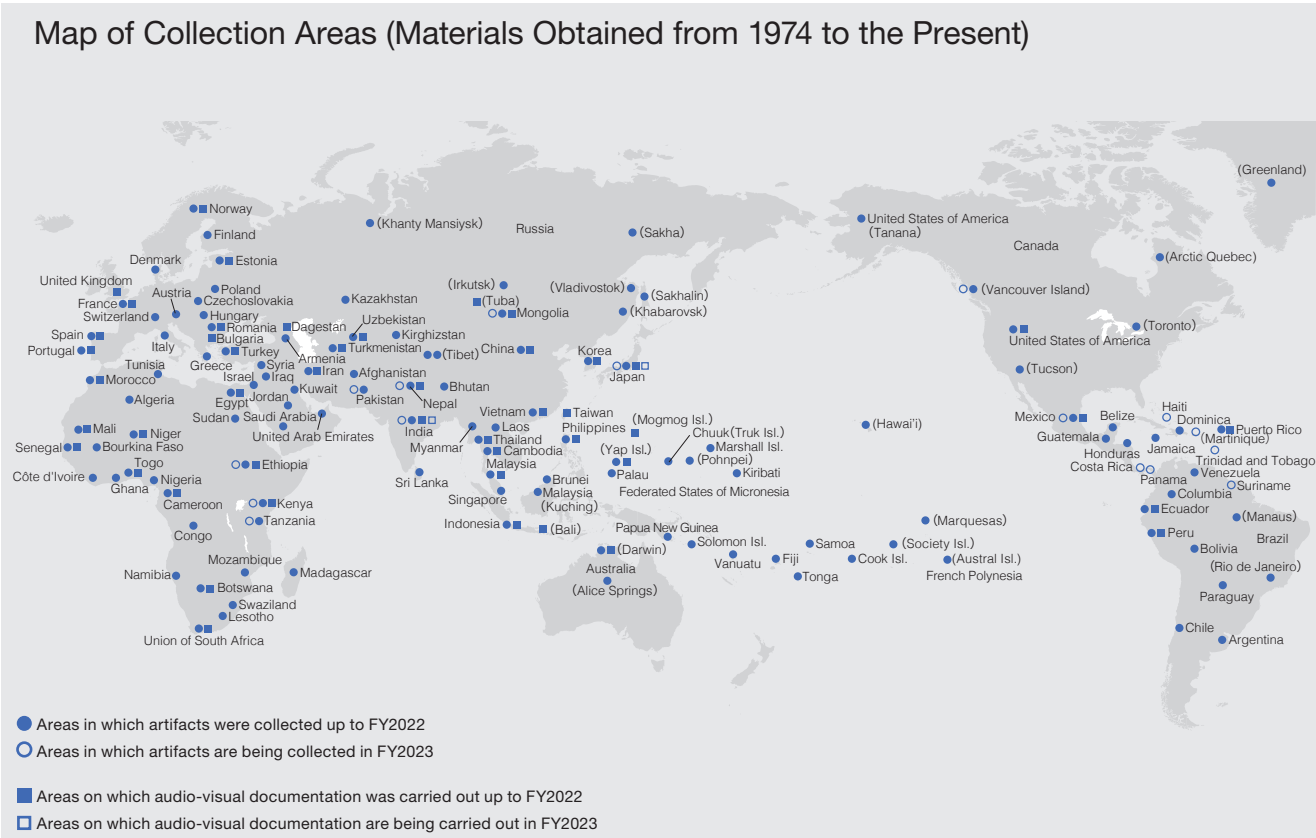
Promotion of Collaboration and Cooperation with Research Organizations in Japan

To promote collaboration, cooperation and joint research with universities, research organizations and academic associations in Japan, agreements are concluded following consideration. In August 2022, agreements were concluded with the National Institute of Informatics, in September with the Research Institute for the Dynamics of Civilizations, Okayama University and in March with the Hokkaido Kushiro Koryo High School.

Name of the Institutes	Date of Agreement	Summary of the Agreement
Hokkaido Kushiro Koryo High School	March 27, 2023	Contribution to academic research, education, and social development
Research Institute for the Dynamics of Civilizations, Okayama University	September 12, 2022	Contribution to academic research, education, and social development
National Institute of Informatics	August 1, 2022	Contribution to academic research, education, and social development
Kanazawa College of Art	March 22, 2021	Based on the Heisei Hyakukouhishou collection database, the status and use of databases in higher education are verified. Educational materials for higher education were put to practical use by linking them to social businesses
Institute for the Study of Japanese Folk Culture, Kanagawa University	March 26, 2020	Contribution to academic research, education, and social development
The Society for Research in Asiatic Music	November 3, 2019	Contribution to the sustainable development of music culture and the elaboration of research on music culture
The Japan Society for the Conservation of Cultural Property	November 19, 2018	Contribution to academic research, education, and social development
Kyoto University of the Arts	March 19, 2018	Contribution to academic research, education, and social development
Osaka University	March 17, 2018	Contribution to academic research, education, social contribution, and development of other activities
Yamagata University	Februrary 16, 2018	Contribution to academic research, education, and social development
Graduate School of Humanities, Kobe University	July 15, 2016	Academic exchange on research education
Research Institute for Languages and Cultures of Asia and Africa, Tokyo University of Foreign Studies	November 25, 2015	Academic research, collaboration, and cooperation related to language and culture around the world
The Osaka Aquarium Kaiyukan	November 19, 2015	Contribution to society, collaboration, and cooperation through promotion of cooperation between businesses and universities, and advancement of academic research and research outcomes
Osaka Institute of Technology	March 23, 2015	Academic research and collaborative cooperation related to information media digital contents
Kanazawa University	March 23, 2014	Organizational system strengthening based on collaboration and cooperation of both institutions
Japanese Society of Cultural Anthropology	February 27, 2008	Promotion of utilization of research collaboration, research exchange, and mutual research outcomes. Contribution to the development and spread of academic matters in human society

Materials and Databases

The Museum has collected and stored a vast amount of materials and information concerning ethnology and anthropology for researchers inside and outside the country, and has made them available to society through exhibitions and other activities. To carry out these activities efficiently, the Museum has been trying to develop better ways to collect and manage materials, organize and provide information, create database systems and contents, hold exhibitions, and implement various other activities.



The Museum Collection of Artifacts and Other Materials as of March 31, 2023

Artifacts (registered and unregistered)	345,624	Books and Periodicals	
From abroad	179,715	Books (Including bound magazines)	694,359
From Japan	165,909	Japanese materials	275,229
		Foreign language materials	419,130
Audio-Visual Materials	72,698	Journals	17,323
Visual Materials	8,277	Japanese periodicals	10,229
Audio Materials	64,421	Periodicals in other languages	7,094
Human Relations Area Files (HRAF)			
Area files (ethnic groups)		465 files	
Original texts		9,115 volumes	
※ as of April, 2023			
eHRAF World Cultures			
Area files (ethnic groups): 359 Original texts: 6,632			
eHRAF Archaeology (Archaeological document-oriented database of prehistoric age)			
Area files (ethnic groups): 106 Original texts: 2,483			

List of Databases as of March 31, 2023

Databases of research resources held in the Museum and outcomes of research projects are made and open to the public.
(For each database description, the numerical value(s) in brackets at the end means the number of records contained in it. Databases with an asterisk are for use only inside the Museum.)

Artifacts

Artifact Catalog
Basic information on the artifacts related to economic activities, everyday life, rituals, and manufacturing tools held in the Museum. Data includes objects' names, images, dimensions and weight, place, culture, and the year of acquisition. [286,819]

Detailed Information on Artifacts in the Catalog
Details about the artifacts held in the Museum, such as their local names and translation, images, materials used in their construction, dimensions and weight, when, where and how they are created or used and by whom, and the place and date of collection. [Inside the Museum: 286,835, including 87,217 records open to the public]

Published References to Artifacts in the Museum
Bibliographic information on published references to artifacts held in the Museum. [81,654]

Korean Daily Commodities Collection
Information (including images) on all daily commodities owned and used by a family in Seoul, South Korea. For each item, its location in their apartment, manner of acquisition, and the family's memories about it are recorded. [7,827]

The George Brown Collection (Japanese and English versions)
Basic collection information (including images) for materials collected by George Brown, a missionary and ethnographer who worked in the Pacific Islands from the late 19th century to the early 20th century, and now held in the Museum. [2,992]

Prints by Indigenous Peoples of Canada *
Basic information and description (including images) on our collection of typical prints created by indigenous peoples of Canada, most of which were displayed in our special exhibition *Voices from the Land. Visions of Life: Beauty Created by the Indigenous Peoples of Canada* in 2009. [158]

The Minpaku Collection of Tibetan Icons and Amulets
Basic information about a wooden religious image of a white cat included in the Tibetan Buddhist painting collection stored by Minpaku and protective charms of traditional Tibetan Buddhism and Bon. [1,439]

Mao Zedong's Badge
It contains information on the characters and patterns of 98 Mao Zedong badges created in various parts of mainland China in 1966-1969, owned by the Museum (image included). [98]

Audio-Visual Materials

Visual Materials Catalog
Information on our collections of movie films, videotapes and DVDs (photographs excluded). [8,277]

Videothèque
Information on visual contents provided by the *Videothèque* System in the main exhibition hall of the Museum. It is searchable by keywords as well as by the menu of a Videothèque booth. [844]

Performing Arts Film
Information (including videos) on film records of music, dance and theater that the Museum has made at various places in the world since 1982. Videos are available only inside the Museum. [849]

The Matsuo Minoru Postcard Collection
Information (including images) on picture postcards bought by MATSUO Minoru in places visited during his service in the Japanese Navy from 1919–1923. [170]

Photograph Collection of the Kyoto University Scientific Expeditions
Photographs taken by the Kyoto University Scientific Expedition to the Karakoram and Hindukush in 1955, by the Tonga Expedition of Kyoto University in 1960, by the Kyoto University African Scientific Expedition from 1961–1967, and by the Second Kyoto University Europe Scientific Expedition in 1969. [Inside the Museum: 42,195 including 22,361 records open to public]

The Umesao Tadao Photo Collection *
Photographs taken by UMESAO Tadao, the first director general of the National Museum of Ethnology, during his fieldwork at various places in the world. [35,481]

Photographs on Aboriginal Australian Culture *
Photographs of various scenes including ceremonies, daily life and landscapes in Aboriginal Australia from 1980–2004 taken by KOYAMA Shuzo, Professor Emeritus, National Museum of Ethnology. [7,999]

The Asaeda Toshio Collection *
Photographs of people, animals and plants in the Pacific Islands taken by ASAEDA Toshio when he visited there in the 1930s as a member of several academic investigation teams. [3,966]

Photographs of Maritime Peoples of Indian and Western Pacific Ocean: The Ohshima George Collection
Photographs taken by OHSHIMA George, during his fieldwork in Asia and Oceania from 1967–1991. [Inside the Museum: 8,842 including 7,889 records open to the public]

Photographs of Cameroon, Africa: The Hata Nobuyuki Collection
Photographs taken by HATA Nobuyuki, Professor Emeritus, National Museum of Ethnology, during his fieldwork mainly in the Republic of Cameroon from 1969 to early 1990s. [6,530]

Morihiro OKI's Photographs of India
Photographs taken by a photographer OKI Morihiro in various places in India and Nepal from 1977–1996. The database includes photographs focused on rituals, festivals, folk paintings, performing arts, artifacts, and everyday life. [Inside the Museum: 22,120 including 21,971 records open to the public]

Nepal Photo Database (Japanese and English versions)
Photographs taken by TAKAYAMA Ryuzo, a graduate student of Osaka City University at that time, and other members of the Japanese Scientific Expedition for Northwestern Nepal in 1958, and information (including images) on artifacts collected by the expedition and now held in the Museum. [3,879]

Photographs on Northwestern Nepal and Manaslu *
Photographs taken by the Japanese Scientific Expedition for Northwestern Nepal from 1958-1959, partly including ones probably taken by the science team of the first Japanese Alpine Club Manaslu Expedition in 1953. They were part of materials of the former Ministry of Education Historical Archives transferred to the Museum. [620]

Ethnographic Images of the Spirit Dance in Thailand *
Photographs and videos of the Spirit Dance in Thailand shot by TANABE Shigeharu, Professor Emeritus, National Museum of Ethnology. The photographs can be searched and viewed by category, place, and ritual host of the Spirit Dance, and are also related to one of the research reports in Thai made about the dance. [Photographs: 10,082, Research reports: 41]

Photographs from the Group of the Synthetic Research of Cultures of Southeast Asian Countries *
Photographs with related information taken by the research group of the Synthetic Research of Cultures of Southeast Asian Countries during the 1st and 2nd missions out of three missions from 1957–1964. [4,393]

The World of Swidden Agriculture: Koumei Sasaki's Perspective
Photographs on swidden agriculture in Japan taken by SASAKI Koumei, former director general of the National Museum of Ethnology, during his fieldwork. [451]

Audio Materials Catalog
Information on our collection of records, CDs and audio tapes. [64,421]

Itemized Information on Audio Records in the Catalog
Piece-by-piece information on music, and episode-by-episode information on traditional folktale records in our collection of audio materials. [351,802]

Library Materials

Book and Periodical Catalog
Bibliographic and holdings information about the books (including microfilms, etc.) and periodicals held in the Museum Library. [Books: 652,394 Periodical Titles: 17,334]
Umesao Tadao: Written Works (1934–)
Comprehensive catalog of written works from articles and books to endorses on the belly bands since 1934 by UMESAO Tadao, the first director general of the National Museum of Ethnology. [6,994]

Languages

The Nakanishi Collection: World Literary Materials
Information (with images of letter samples) on books, newspapers, manuscripts, and artifacts written in various languages and writing systems collected from all over the world by the late NAKANISHI Akira, former president of Nakanishi Printing Co., Ltd. [2,729]

The Yoshikawa Database of Materials for a Sumerian Lexicon
Digitized notebooks with keywords for Sumerian language studies compiled by YOSHIKAWA Mamoru, Professor Emeritus, Hiroshima University. [Keywords: 33,450 Pages: 40,596]

Talking Dictionary of Khinina-ang Bontok
An electronic dictionary of the Khinina-ang Bontok language spoken in Mountain Province, the Philippines, compiled by Lawrence A. Reid, Researcher Emeritus, University of Hawai'i. It contains image and sound data, as well as information typically found in a printed dictionary. [Headwords: 14,048]

Japanese Traditional Folktales: The Inada Koji Collection
Information (including sound data) on Japanese traditional folktales, documented by INADA Koji at Kyoto Women's University and his group in 29 prefectures of Japan from 1967–1978 (446 tapes, about 190 hour recording). Sounds are available only inside the Museum. [3,696]

rGyalrongic Languages (in English and Chinese)
Database of rGyalrongic Languages, spoken in northwestern Sichuan Province, China, compiled by NAGANO Yasuhiko, Professor Emeritus, National Museum of Ethnology and Dr. Marielle Prins. It contains 425/1200 lexical items and 200 sentences for 83 dialects/languages. It also contains sound data. [Words: 41,078 Sentences: 15,706]

Clothing Culture

Clothing and Accessory Collection
Detailed information and images of clothing materials and accessory artifacts held in the Museum, and field photographs. [33,168]

Publications Concerning Clothing Culture
Index of periodical articles and books that concern the culture of costumes and clothing. This database contains the following items: 1) Japanese periodical articles (current), 2) Japanese periodical articles (before the end of World War II), 3) Foreign language periodical articles, 4) Japanese books, 5) Foreign language ethnographies. [187,378]

Chronology of Clothing Culture in Japan 1868–1945
A digital chronology of clothing culture in Japan from 1868–1945 when western style clothing was not yet common. It consists of information on events, contemporary conditions, illustrations, and memoirs which were collected from newspapers and clothing magazines in that period. [14,514]

Image Database of Japanese Clothing Culture in the Modern Age
Image database on acculturation of clothing culture in Japan from 1868-1945 when Japanese style clothing was as popular as western style one. It includes images found in illustrations of newspaper novels and books, photographs, and posters in that period. [6,794]

Facts, etc.

Research Reports of Materials Located in Japan *
Location information on persons and materials related to folklore and ethnology in Japan, containing 1) artifacts, 2) persons who disseminate traditional technologies, 3) visual materials, and 4) publications. This database was constructed based on the *Research Reports* compiled by researchers appointed by the Museum and published in 1980–2003 by the Museum. [21,373]

Indigenous Architecture Restored by 3DCG: Wooden Buildings in Insular Southeast Asia

Information on wooden buildings which has been investigated by SATO Koji, former Associate Professor, National Museum of Ethnology, at various places in Southeast Asia since 1981. GIF animations derived from three-dimensional computer graphics takes us around the inside and outside of buildings. [Locations: 38, Buildings: 61]

Cultural Heritage Recording Memories of Tsunami: Database of Temples, Shrines and Stone Monuments

Information (including images and maps) on temples, shrines, stone monuments and tablets conveying memories of tsunam in coastal area of Japan. [481]

The Heisei Hyakko-Hisho Collection
Information about “the Heisei Hyakko-Hisho,” a compilation of samples prepared by the Kanazawa municipal government and Kanazawa College of Art by collecting and organizing samples showing the processes and techniques, product samples, production tools, and materials for crafts from regions across Japan (image included). [579]

Dyeing Sample by Yanagi Sensyoku Kakosyo
Information was shared by dyer Mr.YANAGI Seiichi for approximately 200 sample cloth pieces produced at Yanagi Sensyoku Kakosyo, including the names, origins, processes, techniques of dyeing and weaving, tools and dyes used, and points of ingenuity (image included). [185]

Number of Visitors in FY2022

Annual Number of Visitors

Total number of visitors	183,810	Adults	106,242
Daily average	525	Students	73,300
Total number of visitors since the establishment of the Museum	11,845,445	Children	4,268

Special Exhibitions	
The 50th Anniversary of the Establishment of Diplomatic Relations between Japan and Mongolia “100 Years of Mongolia: Encounters through Photography” March 17 – May 31, 2022	22,064
“ <i>Homō loquēns</i> ‘talking human’: Wonders of Language and Languages” September 1 – November 23, 2022	26,759
Thematic Exhibitions	
“Slash-and-Burn Cultivation Viewed by SASAKI Komei: From Itsuki Mura to the World” March 10 – June 7, 2022	34,939
“Maritime People and Art of Their World: Material Culture in Southeast Asia and Oceania” September 8 – December 13, 2022	39,361
Collection Exhibition	
“Cormorant Fishing in Contemporary China: Techniques of Fishers” June 30 – August 2, 2022	7,984
Traveling Exhibitions	
“REGNUM IMAGINARIUM: Realm of the Marvelous and Uncanny” April 29 – June 26, 2022 Kochi Prefectural Museum of History	12,665
“Beads In the World” July 30 – September 11, 2022 Ishikawa Nanao Art Museum	3,874
“Beads In the World” November 15, 2022 – January 15, 2023 The Shoto Museum of Art	9,455

Special Exhibitions

Exhibition Title	Period
The Great Andes Civilization: Inca, the Reviving Empire of the Sun	Sept. 14 – Dec. 12, 1989
Masks in Equatorial Africa: Hidden Forest Spirits*	Mar. 15 – May 31, 1990
The E.S. Morse Collection: Meiji Folk Crafts that Crossed the Pacific	Sept. 13 – Dec. 4, 1990
Engelbert Kämpfer: The Genroku Period Viewed by a German*	Feb. 7 – Apr. 16, 1991
Greater India: Deities and Man in the Hindu World	Aug. 1 – Nov. 5, 1991
Daghestan, Crossroads of Civilization: Ethnic Arts of the Caucasus*	Mar. 12 – May 19, 1992
Aboriginal Australia: Fifty Thousand Years of Hunters and Spirits	Sept. 10 – Dec. 8, 1992
Asia Viewed by Torii Ryuzo, a Pioneer of Ethnology*	Mar. 11 – May 14, 1993
Ainu Moshiri: The Ainu World Viewed through Their Designs	June 10 – Aug. 17, 1993
Javanese Cotton Print: A World of Diverse Traditions	Sept. 9 – Nov. 30, 1993
Indigenous Peoples and Cultures in Taiwan*	Mar. 10 – May 24, 1994
Woven Flowers of the Silk Road: An Introduction to the Carpet Heritage of West Asia and Central Asia	Sept. 8 – Nov. 29, 1994
Music and Musical Instruments in Latin America*	Mar. 16 – May 30, 1995
Weaving Color as Culture: The Maya Today	Sept. 14 – Nov. 30, 1995
Japan through the Eyes of Siebold and His Son	Aug. 1 – Nov. 19, 1996
Images of Other Cultures: From the British Museum Collection	Sept. 25, 1997 – Jan. 27, 1998
What is Inside? Forays and X-rays into Ethnographic Objects*	Mar. 12 – May 26, 1998
Mongolia: The Rise of Nomadic Culture	July 30 – Nov. 24, 1998
Cultural Heritage of the South Pacific: The George Brown Collection*	Mar. 11 – May 31, 1999
Ethnic Cultures Abroad: People Moving, Cultures Mixing	Sept. 9, 1999 – Jan. 11, 2000
Theater at the Museum: The Expressive Body	Mar. 18 – May 14, 2000
Ethnology and the Rise of Cinema: From Shadow Theater to Multi-Media	July 20 – Nov. 21, 2000
Ethnology of Life in the Taisho and Showa Periods: Shibusawa Keizo and the Attic Museum	Mar. 15 – June 5, 2001
The Sea Otter and Glass Beads: Trade of Indigenous Peoples of the North Pacific Rim	Sept. 20, 2001 – Jan. 15, 2002
Seoul Style 2002: Life as It Is with the Lee Family	Mar. 21 – July 16, 2002
Wrapping Culture: Furoshiki and Wrapping Cloths of the World	Oct. 3, 2002 – Jan. 14, 2003
Mandala Deities in Tibet and Nepal	Mar. 13 – June 17, 2003
A West African Story-telling Village	July 24 – Nov. 25, 2003
Messages from the Ainu: Craft and Spirit	Jan. 8 – Feb. 15, 2004
Multietnic Japan: The Life and History of Immigrants	Mar. 25 – June 15, 2004
The Arabian Nights	Sept. 9 – Dec. 7, 2004
More Happy Every Day: The World of Bricolage Art	Mar. 17 – June 7, 2005
Fashioning India	Sept. 8 – Dec. 6, 2005

*The distinction between a special exhibition and a thematic exhibition was abolished in 2001 and now all of the temporary exhibitions are called “Special Exhibitions”.

Exhibition Title	Period
Minpaku Kids-World: Objects as Ties between Children and Their Society	Mar. 16 – May 30, 2006
Arabesque of Batik Designs and Techniwues: From Java to the World	Sept. 7 – Dec. 5, 2006
Pilgrimage and Sacred Places: A Voyage of Self-Discovery	Mar. 15 – June 5, 2007
The Great Ocean Voyage: VAKA MOANA and Island Life Today	Sept. 13 – Dec. 11, 2007
The Profound Earth: Ethnic Life and Crafts of China	Mar. 13 – June 3, 2008
SELF and OTHER: Portraits from Asia and Europe	Sept. 11 – Nov. 25, 2008
When Japan’s Tea Ceremony Artisans Meet Minpaku’s Collections: Creative Art in Perspective	Mar. 12 – June 14, 2009
Voices from the Land, Visions of Life: Beauty Created by the Indigenous Peoples of Canada	Sept. 10 – Dec. 8, 2009
Africa in the Works of El AnatsuiA Fateful Journey	Sept. 16 – Dec. 7, 2010
Umesao Tadao: An Explorer For the Future	Mar. 10 – June 14, 2011
Devotion to the Arts of Living Daily Life Among the Aynu of the Kurile, Sakhalin and Hokkaido Islands: Objects from the Late 19th - Early 20th Century Collections of Ethnological Museums in Germany and Japan	Oct. 6 – Dec. 6, 2011
“Modernologio” Now: Kon Wajiro’s Science of the Present	Apr. 26 – June 19, 2012
The Warp and Weft of Weaving: Handlooms and Textiles of the World	Sept. 13 – Nov. 27, 2012
Zafimaniry Style: Life and Handicrafts in the Mist Forest of Madagascar	Mar. 14 – June 11, 2013
Shibusawa Keizo Memorial Project Attic Museum	Sept. 19 – Dec. 3, 2013
The Power of Images: The National Museum of Ethnology Collection	Sept. 11 – Dec. 9, 2014
Food Culture in Korea and Japan: The Tastes of <i>NANUM</i> and <i>OMOTENASHI</i>	Aug. 27 – Nov. 10, 2015
<i>Ishuresuzo</i> , the Image of Ezo: Tracing Persons, Things and the World	Feb. 25 – May 10, 2016
Amazing Show Tents in Japan	Sep. 8 – Nov. 29, 2016
Beads in the World	Mar. 9 – June 6, 2017
Revisiting Siebold’s Japan Museum	Aug. 10 – Oct. 10, 2017
A ‘Tower of the Sun’ Collection: Expo ’70 Ethnological Mission	Mar. 8 – May 29, 2018
Transmitting Art and Craft: Japanese Industrial Design Originating in Tohoku	Sep. 13 – Nov. 27, 2018
Toys Expo—Children in Modern Japan	Mar. 21 – May 28, 2019
REGNUM IMAGINARIUM: Realm of the Marvelous and Uncanny	Aug. 29 – Nov. 26, 2019
Treasures of Indigenous Peoples	Oct. 1 – Dec. 15, 2020
Local Cultures Assisting Revitalization: 10 Years since the Great East Japan Earthquake	Mar. 4 – May. 18, 2021
“UNIVERSAL MUSEUM”: Exploring the New Field of Tactile Sensation	Sep. 2 – Nov. 30, 2021
100 Years of Mongolia: Encounters through Photography	Mar. 17 – May 31, 2022
“ <i>Homō loquēns</i> ‘talking human’: Wonders of Language and Languages”	Sep. 1 – Nov. 23, 2022
“‘Arte Popular’: The Creative and Critical Power of Latin Americans”	Mar. 9 – May 30, 2023

Internet

Website <https://www.minpaku.ac.jp/>

The home page features Minpaku research, exhibits, and other activities, along with information on graduate education, publication, and materials in its library and collections.

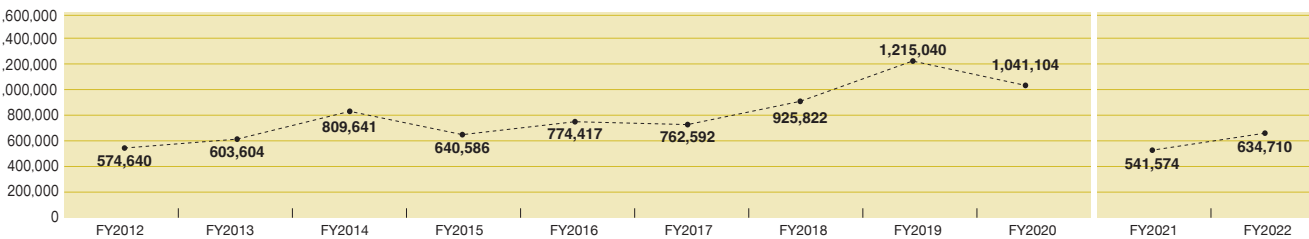
E-mail magazine <https://www.minpaku.ac.jp/research/publication/column/enews>

To provide updates on the latest research, special or thematic exhibitions and various events, like Minpaku Seminars, “Minpaku e-news”, a monthly newsletter is emailed to subscribers.

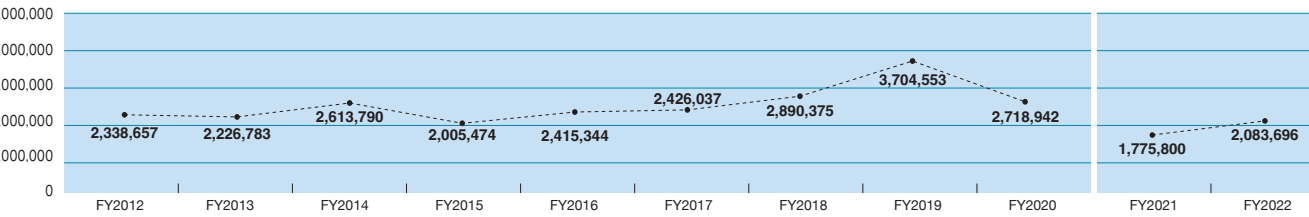
Social Media Facebook <https://www.facebook.com/MINPAKU.official>
Twitter <https://twitter.com/MINPAKUofficial>
YouTube <https://www.youtube.com/MINPAKUofficial>
Instagram <https://www.instagram.com/MINPAKUofficial>

Using various social media provides opportunities to link Minpaku with people interested in cultural anthropology and ethnology, and also to give information on research and museum activities.

Number of Visitors to the Minpaku Website 634,710 (FY2022)



Number of Web Pages Accessed 2,083,696 (FY2022)



*Counting procedures have changed, due to the renewal of our website since FY2021.

Publicity through the Public Media

Publicity is developed through the mass media to convey information about Minpaku’s activities. A program entitled “Window of Research” was launched through the “Meeting for Media and Minpaku Staff”, held monthly on every third Thursday. The Museum has been mentioned in a total of 745 programs and articles: 14 on TV and on radio, 459 in newspapers, 153 in magazines and 119 in other media. Minpaku has also been featured in regular radio broadcasts and newspaper series.

“*Tabi, Iroiro Chikyujin* [Journeys: Various People on the Earth]”

Published from April 2005 to March 2009 as a series entitled “The Study of Other Cultures” in the Mainichi Shinbun newspaper.

Materials for the General Public

Publicity

MINPAKU Anthropology Newsletter
Gekkan Minpaku [Minpaku Monthly]
Minpaku Calender

Guidebooks and Catalogues

Special Exhibition catalogue
“‘Arte Popular’: The Creative and Critical Power of Latin Americans”

Explanatory Booklet

“*Homō loquēns* ‘talking human’: Wonders of Language and Languages”





National Institutes for the Humanities (NIHU)

The National Institutes for the Humanities (NIHU) was established in 2004 as a corporation to support and further develop inter-university research institutes* that promote research in the humanities.

NIHU's six institutes

- National Museum of Japanese History (REKIHAKU)
- National Institute of Japanese Literature (NIJL)
- National Institute for Japanese Language and Linguistics (NINJAL)
- International Research Center for Japanese Studies (NICHIBUNKEN)
- Research Institute for Humanity and Nature (RIHN)
- National Museum of Ethnology (MINPAKU)

As international centers of excellence in their respective research fields, these institutes promote fundamental and interdisciplinary research in collaboration with domestic and international universities and other research institutes and researchers.

In addition, these institutes offer courses at the Graduate University for Advanced Studies (SOKENDAI). The six graduate (doctoral) courses are designed to take advantage of the institutes' resources and provide an array of specialized training for researchers.

The NIHU Headquarters houses the Center for Innovative Research (CIR), which conducts research and projects that link multiple institutes and universities, and promotes joint research using a research infrastructure built on digital technology.



*Inter-University Research Institutes

As Japanese Centers of Excellence (COE) in their respective research fields, these institutes provide universities and other research institutes in Japan and overseas with large facilities and equipment as well as vast materials and information that are difficult for any individual university to maintain, thereby facilitating effective joint research.

NIHU's Mission

As the only inter-university research institute corporation for the humanities, NIHU's mission is to comprehensively explore humanity and its cultures, and through this exploration, to ask what true abundance is, to promote harmony between nature and humanity, and to contribute to the survival and coexistence of humankind.

NIHU's Vision

To realize its mission, in the NIHU's Fourth Mid-term Plan Period (FY2022-2027), NIHU aims to explore various social issues related to the diversity of human culture and social dynamics, try to solve them, and present new values and humanities knowledge that will serve as guidelines for the formation of a future society in which people and nature live in harmony and where science, technology, and humanity coexist. To achieve this, the Center for Innovative Research was established within the NIHU headquarters with the aim of forming new knowledge open to society. Based on the philosophy of open humanities research through co-creation with various people in Japan and overseas, the center will build a research platform using digital technology, promote joint research through that platform, and work on the formation of a "Knowledge Forum" as a place for exchange and collaboration with various people in society and the formation of an international network.

Center for Innovative Research (CIR)

CIR promotes "NIHU Research Projects" and "NIHU Co-creation Initiatives."

NIHU Research Projects

As basic and interdisciplinary research on the humanities, which forms the core of NIHU, eleven research projects in three types will be implemented, leading to an expansion of academic networks and the creation of new fields to strengthen functions for fulfilling our mission as an inter-university research institute.

Institute-based Projects NIHU's six institutes have established priority research themes in accordance with their respective missions.	Construction of Japanese Historical Knowledge and Open Science Research
	Model Building in the Humanities through Data-Driven Problem Solving
	Empirical and Applied Research on the Japanese Language Based on Open Language Resources
	New Departures and Consortium for Global Japanese Studies: Pioneering and Cultivating Global Japanese Studies
	Renewing Modern Civilization through Nature-culture Complex toward Solving Global Environmental Problems
Multidisciplinary Collaborative Projects These are projects in which NIHU's institutes take on a central role while collaborating with other NIHU's institutes as well as universities and other external institutes, working with research themes that cut across different fields.	Sustainable Development Humanities Research Based on the Info-Forum Archives of Human Culture
	Interdisciplinary and Integrated Studies on Local Cultures: Aiming for the Emergence of Novel Communities
	Object-based Research of Nature-human Interactions up to the Anthropocene
Network-based Projects These are projects in which NIHU's institutes play a central role in forming a network with universities and other research institutes in Japan and overseas as well as implementing issues that are important to Japan and the world.	Expansion Studies of Synthetic Bibliology
	NIHU Global Area Studies
	Inter-University Research Institute Network Project to Preserve and Succeed Historical and Cultural Resources

NIHU Co-creation Research Initiatives

These are projects that promote the sharing of research results and co-creation with local communities and societies, promote Co-creation research projects and Co-creation outreach, whose aim is to develop research in three ways: "social co-creation," "digitalization," and "international co-creation."

Co-creation Research Projects

These projects promote joint research through co-creation with various organizations and people within and without NIHU as well as develop research in three ways.

- **Establishing Science for Universal Communication (S_COM)** [social co-creation]
- **Building Digital Library for Humanities** [digitalization]
- **Japan-related Documents and Artifacts Held Overseas:** [international co-creation]
 - 1) Early Diplomatic Japanese Collections Abroad: Contextualizing 19th Century Japanese Material Heritage in World History through On-site and Online Research and Use
 - 2) Study on the Construction of Archival Infrastructure for the History of Modern Japan-Vatican Relations
 - 3) Japan-related Documents and Artifacts in Hawai'i: Historical and Social Survey Interface

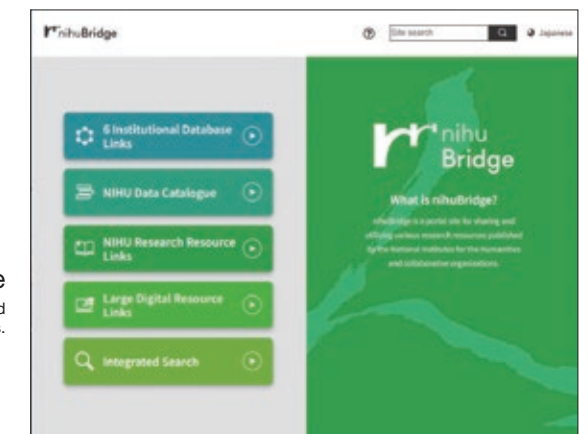
Co-creation Outreach

These initiatives implement projects to accelerate the three types of research development as well as aim to enhance and innovate research at NIHU's institutes and universities and other external institutes.

- **NIHU Knowledge Co-creation Projects** [social co-creation]
- **NIHU "Digital Humanities" (DH) Projects** [digitalization]
- **NIHU Global Partnership** [international co-creation]

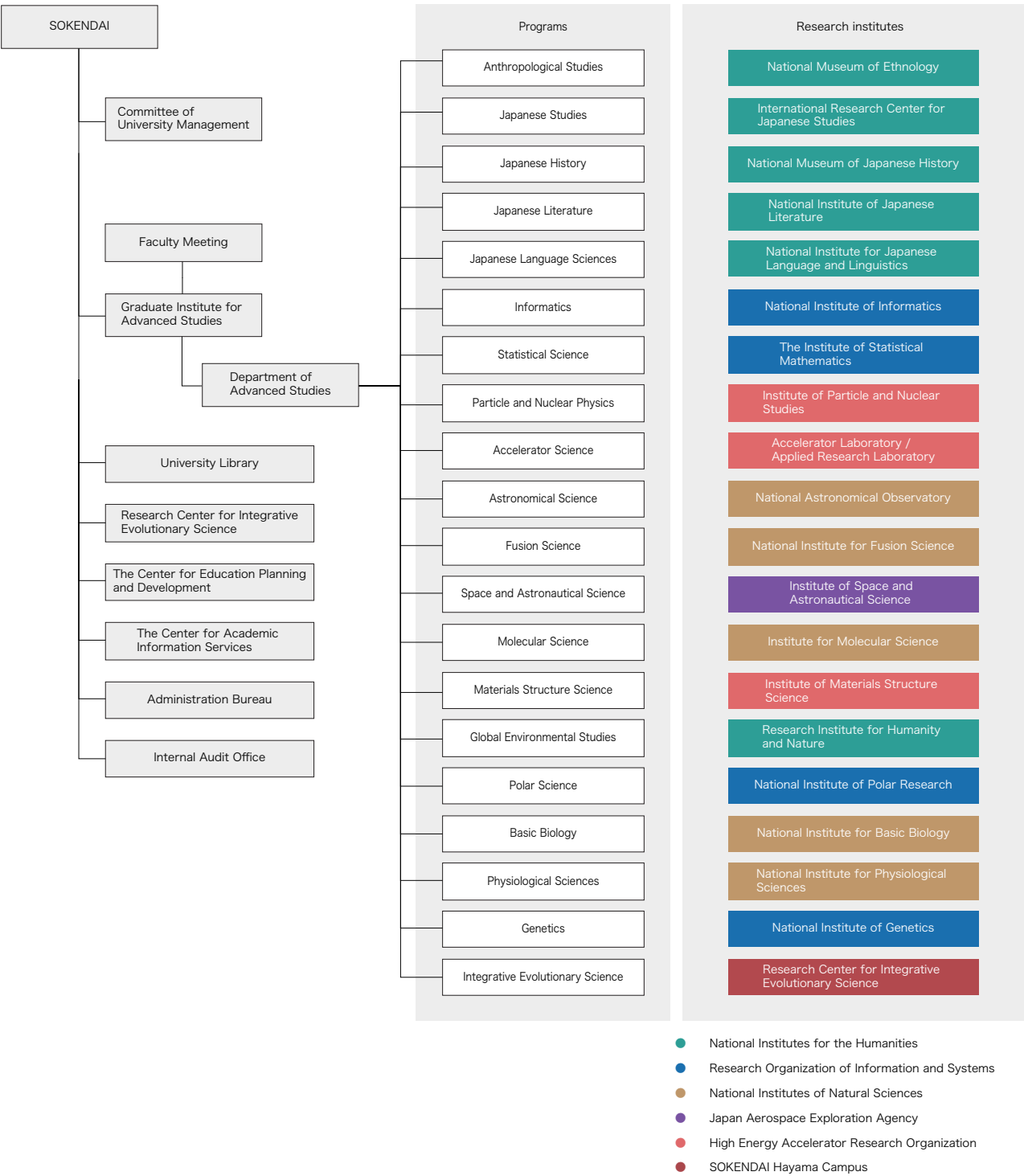
nihuBridge

This is a portal site for sharing and utilizing diverse research resources disseminated by the NIHU and associated institutes.



The Graduate University for Advanced Studies, SOKENDAI, is a graduate university based on Inter-University Research Institutes. By promoting interaction among universities and graduate schools, both domestic and overseas, using a world-leading research environment of those institutes as a training ground, SOKENDAI aims to develop researchers with the ability to think from broad, comprehensive, and global perspectives.

University Organization



The Anthropological Studies Program

The Museum has established the Anthropological Studies (doctoral) program, Graduate Institute for Advanced Studies, SOKENDAI. It provides education and conducts research on the diverse cultures that humankind has created worldwide, from prehistoric to modern times. From the viewpoints of cultural anthropology, ethnology, and related fields, we guide ethnographic research, which descriptively analyzes a specific culture, and cross-cultural research, which compares different cultures from a specific perspective. Students aim to complete their doctoral dissertations using data collected through field work, objects, videos/sounds, and documentary materials held at the Museum.

Outline of the Program

Educational studies are composed of lectures and instruction by individual faculty members and shared seminars by multiple faculty members. Two types of shared seminars are offered: the basic seminar called the “First year Seminar” which is mainly for freshmen and the “Dissertation Seminar” for sophomores and more advanced students focusing on instruction for thesis writing. Common subjects (advanced theory) on cultural anthropology and ethnology are also conducted primarily for first year students.

Under student exchange agreements, credits for the program can be transferred among the Graduate School of Asian and African Area Studies at Kyoto University, the Graduate School of Human Sciences at Osaka University, the Graduate School of Intercultural Studies and the Graduate School of Human Development and Environment at Kobe University.

In most cases, students work on preparation for fieldwork during the first year, and proceed to fieldwork in the second or subsequent years under the supervision of their advisors. Then, after finishing their fieldwork, the students complete their dissertations under the individual guidance of their advisors and through participation in the “Dissertation Seminar”.

Number of Students as of April 1, 2023

Quota and Current Number of Students

Department / Program	Quota	Current Students			Total
		First year	Second year	Third year	
Anthropological Studies	4	4			4
Regional Studies			1	11	12
Comparative Studies			1	8	9
Total		4	2	19	25

※ In April 2023, the Departments of Regional Studies and Comparative Studies were reorganized into the Anthropological Studies Program.

Number of Doctoral Degrees Awarded

Academic Year	Regional Studies		Comparative Studies		Total
	By Completing Doctoral Course	By Submitting Dissertation	By Completing Doctoral Course	By Submitting Dissertation	
1991			1		1
1992					
1993			1	1	2
1994	2		1		3
1995	2		1		3
1996		3			3
1997	3		4		7
1998	4	2			6
1999					
2000	2		2	1	5
2001	1	1	2	1	5
2002	1	1		2	4
2003					
2004	2	3			5
2005	4	2		2	8
2006	2		3		5
2007	2	1	3		6
2008	1		1		2
2009		1	1	1	3
2010	2		2	3	7
2011	3		1	1	5
2012	1	1	1	1	4
2013			1	1	2
2014	2	1	2		5
2015	3	1			4
2016	1	1	1		3
2017	1		1		2
2018	1				1
2019	1		2		3
2020	1	1	2		4
2021	4		3	1	8
2022	1		1		2
Total	47	19	37	15	118

Acceptance of Overseas Researchers under the JSPS RONPAKU Program

Grantees of the JSPS RONPAKU (Dissertation Ph.D.) Program conduct their research under the supervision of advisors in the program.

General Information

Hours and Closing Days

Hours	10:00 a.m. to 5:00 p.m. Entry permitted up to 4:30 p.m.
Closing days	Every Wednesday. When a national holiday falls on a Wednesday, the Museum is closed on the following weekday. The Museum is closed from December 28 until January 4 for the year-end and New Year period.

Admission Charges

	Individual	Groups (20 persons or more) and visitors eligible for discount *
Adults	¥580	¥490
College and University Students	¥250	¥200
High School Students and Younger	Free	

An additional charge may be necessary for Special Exhibitions.

Admission is free for holders of a Disabled Person's Handbook and one accompanying person per holder.

Admission is free for members of the Japanese Society of Cultural Anthropology, International Council of Museums, and Japan Association of Museums (a membership certificate is required).

The following visitors qualify for a discounted admission charge (please present documentation); 1) Groups of 20 or more; 2) College, university, graduate, and vocational school students who use the Museum as part of their course work; 3) those who have visited the Museum within the previous three months; 4) Visitors aged 65 and over (ID required)

(If you purchase a regular Museum ticket at the entrance to the Natural and Cultural Garden, the difference will be refunded at the Museum.)

Contact Information

National Museum of Ethnology
10-1 Senri Expo Park, Suita, Osaka 565-8511, Japan
Tel: +81-6-6876-2151 Fax: +81-6-6875-0401

Website

https://www.minpaku.ac.jp/en

Information and Services

The Minpaku Associates Tel: +81-6-6877-8893 (The Senri Foundation 9:00 a.m.–5:00 p.m. on weekdays only) minpakutomo@senri-f.or.jp

The organization, Minpaku Associates was formed to support the activities of the National Museum of Ethnology and to use its facilities actively.

With the cooperation of the museum, the Minpaku Associates publishes *Kikan Minzokugaku* (Ethnological Quarterly) and organizes and operates Ethnological Tours and Experiential Seminars offering opportunities for direct contact with various cultures, lectures, and other events.

Museum Shop (Hours: 10:00 a.m. to 5:00 p.m.) Tel: +81-6-6876-3112

At the museum shop, visitors can purchase folk crafts from various parts of the world, books about anthropology and ethnology, and the museum's original goods.

Restaurant (Hours: 11:00 a.m. to 4:30 p.m. Last Orders: 4:00 p.m.) Tel: +81-6-6310-0810

We serve lunch and dinner, including such dishes as hamburger steaks and omelets, and light meals and desserts. We can seat 110 diners, and our restaurant accepts reservations from small groups with a few individuals to large groups such as parties with many people. Group customers can also reserve our box lunches.



Minpaku Associates Desk



Museum Shop



Restaurant



Overseas Ethnological Tours organized by Minpaku Associates (*Minpaku Tomonokai*) (FY2019)



Kikan Minzokugaku [Ethnological Quarterly]



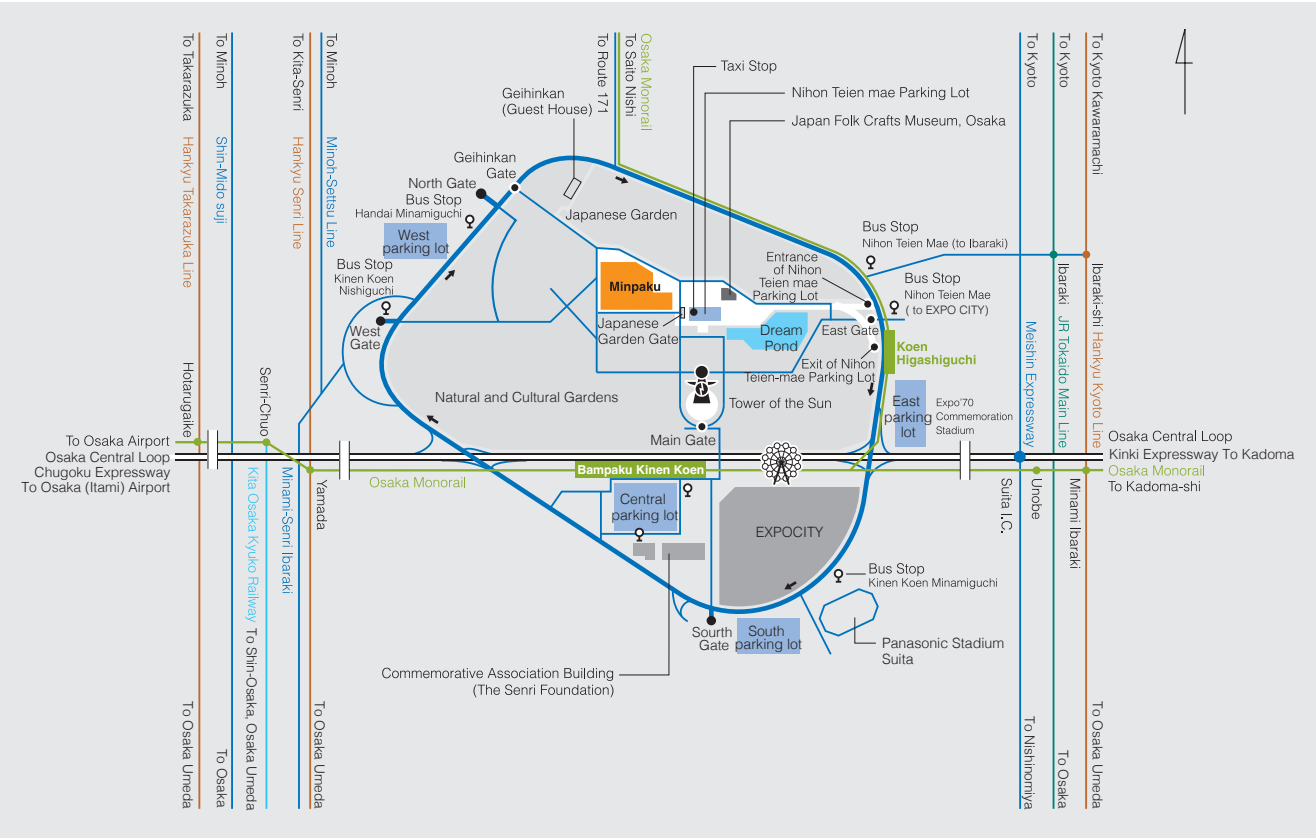
Access Information

- By Osaka Monorail, from Bampaku Kinen Koen Station or Koen Higashiguchi Station it is about a 15-minute walk to the Museum through the Natural and Cultural Garden.
- By bus, from Hankyu Ibaraki-shi Station and JR Ibaraki Station alight at Nihon Teien Mae, from which it is about a 13-minute walk to Minpaku.
- By car, please park at one of the parking lots for the Expo'70 Commemorative Park. From the nearest pay parking lot, in front of the Japanese Garden, it is about a 5-minute walk to the Museum. Please enter the Museum through the Japanese Garden Gate.
- By taxi, you will get dropped off in the parking lot in front of the Japanese Garden. Please enter the Museum through the Japanese Garden Gate.

* Please buy a museum ticket at the gate of the Expo'70 Commemorative Park. Ticket holders can pass through the park at no charge.

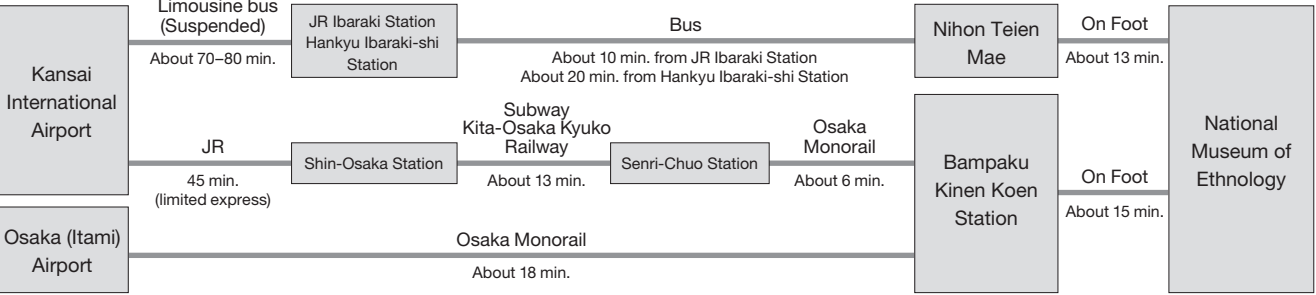
* If you visit the Expo'70 Commemorative Park, you need to buy an entry ticket.

Map



Major Access Routes

Access routes to the Museum from airports and major railway stations are as shown below.



The National Museum of Ethnology's emblem was created at its foundation (1974), symbolizing the solidarity and activity of the Earth (ethnicity and culture). The protruding parts represent Earth's seven continents and civilizations. The part surrounding the circle and protrusions represents Earth's seven seas.

Survey and Guide
2023-24



National Museum of Ethnology

10-1 Senri Expo Park, Suita, Osaka 565-8511, Japan

