



National Museum of Ethnology, Japan

Survey and Guide
2024-25





Survey and Guide for

2024-25

(Fiscal Year April 1, 2024–March 31, 2025)

Contents

Preface	1
Purpose and Functions	2
Organization	3
Governing Body/Research Organization	3
Center for Cultural Resource Studies	6
Center for Academic Research Development	7
Institutional Research (IR)	7
Research Activities	8
Joint Use of the Museum	24
Joint-Use Facilities for Scientific Research	24
Library	25
Materials	26
Exhibitions	28
International Cooperation	36
Partnership between the Museum and Society	37
Data Collection	41
History	42
Former Directors-General/Professors Emeriti	43
Facilities	45
Cooperative Agreements	46
Materials and Databases	48
National Institutes for the Humanities	52
SOKENDAI	54
(The Graduate University for Advanced Studies)	
General Information	56



Printed cloth (hand pattern), Nigeria

Preface

The National Museum of Ethnology, Japan (Minpaku), was founded in the year 1974 as an Inter-University Research Institute in ethnology and cultural anthropology. This year, in 2024, the institution celebrated its 50th anniversary.

Fifty-five Minpaku researchers engage in fieldwork in various parts of the world to promote the investigative study of the diversity and commonality of human culture and the dynamic state of society. Anthropological Studies of the Graduate University for Advanced Studies, SOKENDAI (three-year doctoral program) is also based in the museum. Minpaku, in addition to functioning as a museum, is currently the only anthropology-related educational institution with researchers and research organizations addressing related issues in the field globally. Moreover, it is the largest ethnographic museum in the world in terms of facility size.

Human civilization today is facing its most significant turning point in several centuries. Until recently, some groups were considered central and having unilateral control of other groups which were regarded as peripheral. The dynamics of this power relationship are apparently changing now. These days, we witness that contacts, interactions, and amalgamation, including creative and destructive processes, are occurring worldwide in a bilateral manner between those two entities: the center and periphery. At the same time, new developments have emerged to divide the world.

After experiencing the COVID-19 crisis since 2020, we have come to realize firsthand that our lives are intricately linked to the activities of invisible viruses and bacteria. In other words, we humans, are an integral part of our “biosphere,” which encompasses all forms of life. Furthermore, with the growing advocacy for naming this era “the Anthropocene” and the recognition that human activities have imposed irreversible burdens on the global environment, we seek to now urgently address these issues on a global scale, looking ahead to a shared future on this planet.

Despite the necessity for global cooperation among all of humanity, there are forces at work that hinder this effort. This makes it all the more imperative for people to build a world where they live together across linguistic and cultural differences. Currently, more than ever, anthropological knowledge and ethnological museums that deepen the understanding of ourselves and others, based on empathy, are urgently needed.

Since its inception, Minpaku has positioned itself as a ‘forum’ of human knowledge—a place where people from diverse standpoints come together to spark discoveries, foster new discussions, and inspire challenges.

Minpaku is now promoting Special Research Project entitled “Ethnic Groups and Ethnicity in the Post-Nationalist Era.” This international research project aims to comprehensively understand and analyze the current global situation, where the framework of nation-states is being destabilized, leading to heightened ethnic conflicts and divisions. By integrating perspectives from cultural anthropology and related disciplines, it seeks to explore new paradigms for realizing a harmonious and convivial human society.

At Minpaku, we are also advancing a project on the “Info-Forum archives” (Full title: “Sustainable development humanities research based on the Info-Forum archives of human culture).” This project is designed to share information about artifacts and audiovisual materials collected at Minpaku, not only with domestic and international researchers and users but also with the people initially providing those materials. The project will accumulate and analyze the newly gained insights continuously, devoting special efforts to promote exploration through space and time of human cultures and their transformation, and to participate in the advancement of the local societies.

Through these research and museum activities, the National Museum of Ethnology, Japan, is trying to establish itself, in a more evolved and complete manner than ever before, as a “forum” of human knowledge.

I sincerely request your continued cooperation and support in implementing our activities.



YOSHIDA Kenji
Director-General
National Museum of Ethnology, Japan

Purpose and Functions

Purpose

The National Museum of Ethnology conducts anthropological and ethnological research. It aims to promote a general understanding and awareness of peoples, societies, and cultures worldwide through the collection, preservation, conservation, research, release, and educational dissemination of ethnographic materials and public exhibitions. Minpaku was established in 1974 as an Inter-University Research Institute under the “Law to amend part of the National School Establishment Law” (No. 81, 1974). In April 2004, it made a fresh start as a member of the National Institutes for the Humanities, under the “National University Corporation Act” (No. 112, 2003).

Functions

Research Institute	The Museum functions as a research institute equipped with a museum. It serves as a research center for anthropology and ethnology, providing information and research results to academic communities and the general public through publications, exhibitions, and other means. All researchers at Minpaku are experts in various fields, such as cultural anthropology, ethnology, linguistics, ecological anthropology, archaeology, ethno-technology, ethno-arts, area studies, and museology.
Joint Research	As an Inter-University Research Institute, the Museum supports and organizes joint research projects with researchers from other academic institutions. We collaborate with researchers at universities and research institutions, both in Japan and overseas, to plan and execute various research projects. Materials collected and stored in the Museum are used widely by those researchers.
Information Center	The Museum collects, manages, and conserves materials that contribute to the understanding of the world’s peoples, societies, and cultures. These materials include artifacts, visual and audio materials, library materials, Human Relation Area Files (HRAF), and various archival materials generated and accumulated through research. By making information on these materials available to the public through databases and other means, we encourage researchers to use them.
Exhibitions	The Museum makes the research results available to the public through exhibitions. Academic staff members plan and manage exhibitions with the basic policy of closely linking research and exhibitions. The main halls hold Regional and Cross-cultural exhibitions. The former displays cultures and societies in major regions, whereas the latter emphasizes cultural elements, such as music and language, which are shared across human societies. Thematic and collection exhibitions are occasionally held. They focus on rapidly changing global situations and feature current research in cultural anthropology and ethnology. In addition, the Museum comprehensively and systematically presents special exhibitions on specific themes.
Social Contributions	To present its latest research findings to the public, the Museum offers academic lecture programs, seminars, weekend salons, special lectures and performances, film shows, and various workshops. The Museum also organizes intensive courses on Museums and Community Development, and various projects for other museums, as part of its international cooperation activities.
Graduate Programs	The Museum is one of the core research institutes of the Graduate University for Advanced Studies (SOKENDAI), with Anthropological Studies program of the Graduate Institute for Advanced Studies (three-year doctoral program). We develop researchers who study the knowledge and methodologies accumulated in cultural anthropology, ethnology, and related fields, which can promote a high level of research by applying the acquired knowledge and methodologies. We offer collaborative educational programs in cooperation with several graduate universities.



Organization

Governing Body

as of April 1, 2024

Director-General Sixth Director-General April 2017– YOSHIDA Kenji Representation of Culture in Museum	Deputy Director-General (in charge of research, exchange and Institutional Research (IR)) UDAGAWA Taeko Professor, Department of Cross-Field Research	Deputy Director-General (in charge of planning and coordination) FUKUOKA Shota Professor, Department of Modern Society and Civilization	System Coordinator HIRAI Kyonosuke Professor, Department of Modern Society and Civilization	Audit Office SUHARA Aki Director
--	---	---	--	---

Administrative Organization

as of April 1, 2024

Office of Administration SUHARA Aki Director	Office of Information and Documentation FUKUOKA Shota Director	SUHARA Aki Deputy Director
General Affairs Section ISSYA Hiromasa Head	Research Cooperation Section ONO Tomoyasu Head	Finance Section BABA Takeshi Head
	Information Planning Section MAEHARA Tadanobu Head	Information Systems and Services Section NAKAYAMA Takahiro Head

Board of Advisors

as of April 1, 2024

The advisors discuss the Museum’s management, and operational issues of critical importance, at request of the Director-General.

GOTO Akira Special Research Fellow, Antropological Institute Nanzan University	OKADA Hiroki Professor, Graduate School of Intercultural Studies, Kobe University	FUKUOKA Shota Deputy Director-General (in charge of planning and coordination), National Museum of Ethnology/Director, Office of Information and Documentation	SHIMAMURA Ippei Director, Department of Modern Society and Civilization, National Museum of Ethnology
KIGAWA Rika Head, Museum Science Division, Curatorial Department, Kyusyu National Museum	SASAKI Shigehiro Professor, Graduate School of Humanities, Nagoya University	HIDAKA Shingo Director, Center for Cultural Resource Studies, National Museum of Ethnology	SUZUKI Motoi Director, Department of Cross-Field Research, National Museum of Ethnology
KUBOTA Sachiko President, Ashiya University/Professor Emeritus, Kobe University	TAKAKURA Hiroki Professor, Center for Northeast Asian Studies, Tohoku University	IIDA Taku Director, Department of Globalization and Humanity, National Museum of Ethnology	UDAGAWA Taeko Deputy Director-General (in charge of research, exchange and (IR)), National Museum of Ethnology/Director, Center for Academic Research Development
MIZUSAWA Tsutomu Former Director, The Museum of Modern Art, Kamakura & Hayama	TOMIZAWA Hisao Vice-president, University of Shizuoka	NIWA Norio Professor, Department of Globalization and Humanity, National Museum of Ethnology Chair, Anthropological Studies, Graduate Institute for Advanced Studies, SOKENDAI (The Graduate University of Advanced Studies)	YAMANAKA Yuriko Director, Department of Advanced Human Sciences, National Museum of Ethnology
NAKATANI Ayami Professor, School of Sociology, Kwansei Gakuin University			

External Evaluation Committee

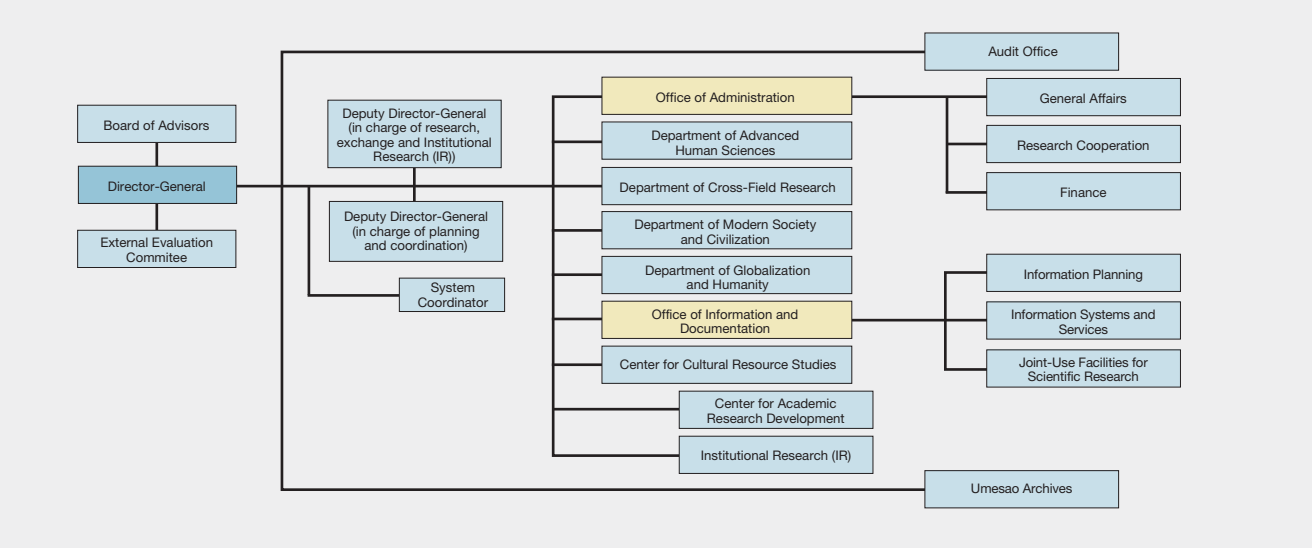
as of April 1, 2024

The committee meets to inspect and evaluate the Museum’s research and educational activities at request of the Director-General.

DEGUCHI Akira Director, The Open University of Japan Shimane Study Center	MIYAHARA Chie Deputy Director, JICA Ogata Sadako Research Institute for Peace and Development	OKAZAKI Yoshiko Former President/Professor Emeritus, University of the Sacred Heart	TAKANO Akihiko Professor Emeritus, National Institute of Informatics	USHIROSHOJI Masahiro Director, Kitakyushu Municipal Museum of Art
ICHIKAWA Mitsuo Professor Emeritus, Kyoto University	OKAHASHI Tatsuya Chairman, The Resona Foundation for Asia and Oceania	SAKIMOTO Toshiki President, KANSAI・OSAKA 21st Century Association	TANAKA Masakazu Vice-president, Professional Institute of International Fashion	

Organization Chart

as of April 1, 2024



Research Organization as of August 1, 2024

Department of Advanced Human Sciences

YAMANAKA Yuriiko Director

Professors		Associate Professors	Assistant Professors	
HIROSE Koujirou Japanese Religious History, Folklore	SASAHARA Ryoji Folk Culture, Performing Arts; Japan	HIRANO Chikako Cultural Anthropology, Indigenous Australian Studies	SUEMORI Kaoru Conservation Science, Asian Art Studies	MIYAMAE Chisako Heritage Science, Digital Heritage
KIKUSAWA Ritsuko Linguistics, Austronesian Languages	YAMANAKA Yuriiko Comparative Study of Traditions on Alexander the Great; West Asia, Iran	OKADA Emi Ethnomusicology, South Asian Studies	YOSHIOKA Noboru Linguistics, South Asian Studies	TAKASHINA Maki Archival Science
MARUKAWA Yuzo Informatics of Association, Information Service for Cultural Assets		Project Assistant Professor		
		ICHINO Shinichiro Institutional Research and Evaluation		

The purpose of this Department is to deepen theoretical research in the basic study of human sciences and thereby extract new academic challenges and create a new cross-disciplinary domain.

Department of Cross-Field Research

SUZUKI Motoi Director

Professors		Associate Professors		Assistant Professor
HAN Min Social Anthropology; China	SHINMEN Mitsuhiro Science of Religion; Eastern Europe	MATSUO-GOGATE Mizuho Cultural Anthropology, South Asian Studies	SUGASE Akiko Anthropology, Middle Eastern Studies	FUJII Shinichi Cultural Anthropology, Oceanic Studies
KASHINAGA Masao Ethnography of Southeast Asia; Vietnam, Tai Area	SUZUKI Motoi Anthropological Perspectives on Development Assistance Evaluations	OTA Shimpei Sociocultural Anthropology; Northeast Asia		
MATTHEWS, Peter J. Ethnobotany, Prehistory, Crop Plant Biogeography; Asia, Pacific	UDAGAWA Taeko Cultural Anthropology, Gender Studies; Italy, Mediterranean Europe			
MINAMI Makito Ecological Anthropology; South Asia				

The Department aims to create a new domain of anthropological area studies by deepening regional ethnographic research in various regions of the world and establishing new foundations for cross-field research.

Department of Modern Society and Civilization

SHIMAMURA Ippei Director

Professors		Associate Professors		Assistant Professor
FUKUOKA Shota Ethnomusicology; Southeast Asia, Indonesia	SAITO Akira Ethnohistory; Latin America	FUJIMOTO Toko Cultural Anthropology, Central Asian Studies	SAITO Reiko Ainu and Northern Indigenous Peoples Studies, Material Culture; North Pacific Rim	SUZUKI Kota Folk Culture, History of the Performing Arts; Japan
HIRAI Kyonosuke Economic Anthropology, Anthropology of Work; Southeast Asia	SHIMAMURA Ippei Cultural Anthropology, Mongolian Studies	ITO Atsunori Social Anthropology, Native American Studies, Indigenous Arts and Intellectual Property Issues	UEBA Yoko Textile and Handcraft; South Asia, Middle East	
		MATSUMOTO Yuichi Andean Archaeology, Latin America Studies		

The Department aims to create a set of new values for responding to that challenges humanity faces today, and to envisage the future of civilization through interdisciplinary approach of looking into the future by way of the events of the past.

Department of Globalization and Humanity

IIDA Taku Director

Professors		Associate Professors		Assistant Professor
IIDA Taku Ecological Anthropology, Fisher Studies; Madagascar, Japan	NOBUTA Toshihiro Social Anthropology, Southeast Asian Studies	AISHIMA Hatsuki Social Anthropology; Islam, Middle East	SUZUKI Hideaki History of the Indian Ocean World, Swahili Society	KURODA Kenji Middle Eastern Studies, Cultural Anthropology
MIO Minoru Religious Anthropology; South Asia, India	UDA Shuhei Environmental Folklore; East Asia	CHE Sohee Medical Anthropology, Northeast Asian Studies	YAGI Yuriko Cultural Anthropology, Latin American Studies	
NIWA Norio Social Anthropology; Oceania		NAKAGAWA Osamu Cultural Anthropology, Anthropology of Europe		

To create new values for responding to challenges that humanity faces today, the department and to envisage a global society through an interdisciplinary approach of taking a bird's eye view of the world by way of regional events.

Center for Cultural Resource Studies

HIDAKA Shingo Director

Professors		Associate Professors		Assistant Professors
HIDAKA Shingo Conservation Science	NOBAYASHI Atsushi Ethnoarchaeology, Material Culture, Austronesian Cultures; East Asia, Formosa	MISHIMA Teiko Anthropology, International Migration; Senegal, West Africa	TERAMURA Hirofumi Culture and Information Science, Archaeological Information	KAWANISHI Eriko Anthropology, Pagan Studies
KAWASE Itsushi Visual Anthropology	ONO Rintaro Marine Archaeology, Southeast Asian Studies	NARA Masashi Cultural Anthropology, Chinese Studies	NOGUCHI Hiroya Cultural Anthropology, Alaska Studies	
			WINCHESTER, Mark Modern and Contemporary Ainu Intellectual History	

The Center aims to plan and promote research projects that improve the sharing of cultural resources in an interdisciplinary and international manner.

Center for Academic Research Development

UDAGAWA Taeko Director

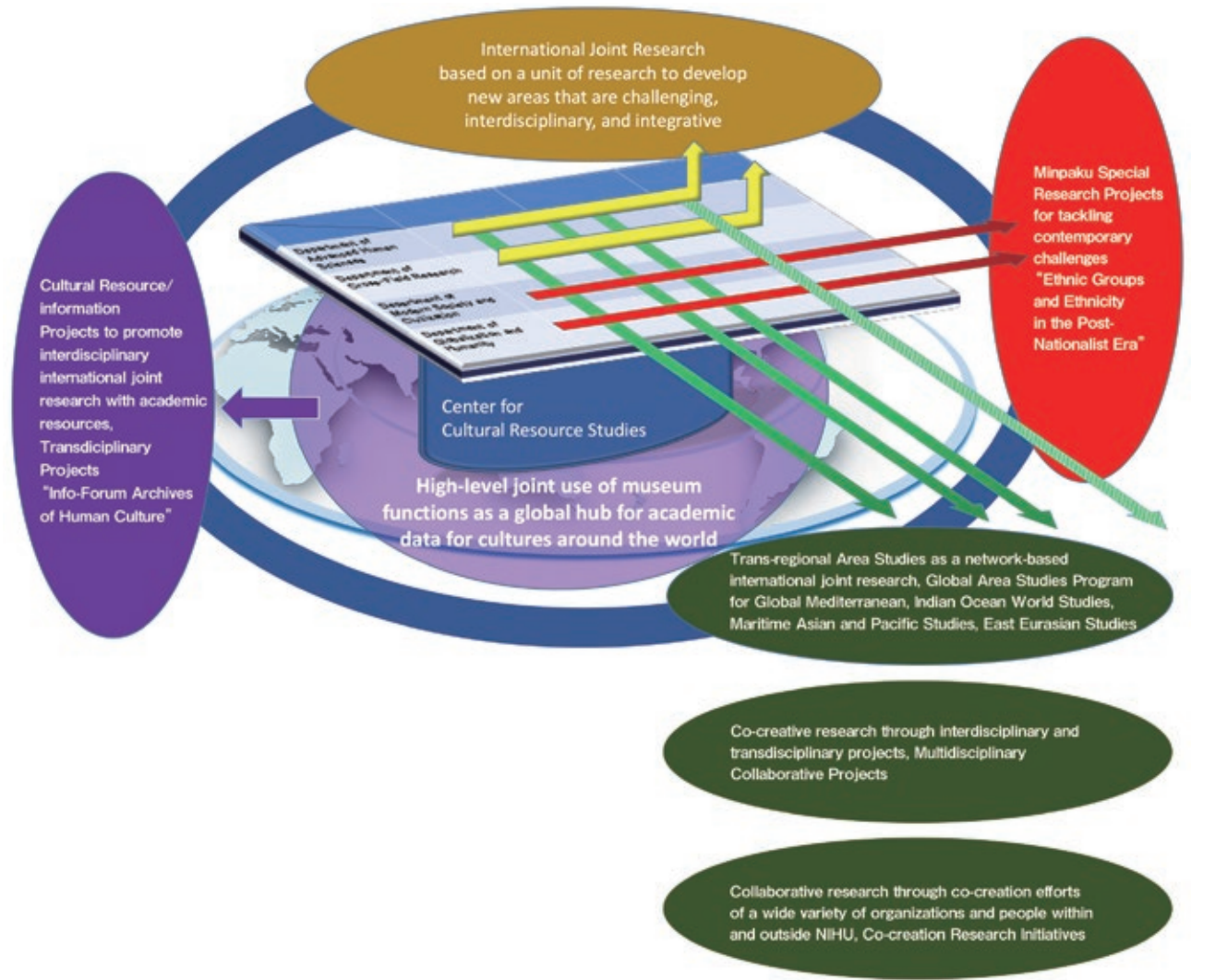
AISHIMA Hatsuki Associate Professor, Department of Globalization and Humanity	MATSUO Mizuho Associate Professor, Department of Cross-Field Research	NOBAYASHI Atsushi Professor, Center for Cultural Resource Studies
KASHINAGA Masao Professor, Department of Cross-Field Research	MIO Minoru Professor, Department of Globalization and Humanity	UDA Shuhei Professor, Department of Globalization and Humanity

The Center aims to plan and oversee the infrastructure enhancement and international and national strategies for research organizations to be used jointly to explore new domains.

Umesao Archives

IIDA Taku Director

MARUKAWA Yuzo Professor, Department of Advanced Human Sciences	TAKASHINA Maki Assistant Professor, Department of Advanced Human Sciences
---	--



Research Associates

Department of Advanced Human Sciences

UEMURA Yukio
Professor, Faculty of Music, Tokyo University of the Arts
Reconstruction and Revitalization of Japanese Folk Music through Utilizing the Toyo Ongaku Gakkai Sound Archives Preserved in the National Museum of Ethnology

Department of Modern Society and Civilization

KITAHARA Mokottunas
Professor, Center for Ainu and Indigenous Studies, Hokkaido University
Material Culture of the Sakhalin Ainu and Its Differences and Similarities with Neighboring Cultures

WADA Rei (DARTHREIDER)
Rapper, Writer, Critic, Film Director
Studies about Hiphop Culture Specialness and Universality in Global Frontiers(including Japan)

Department of Globalization and Humanity

IWATANI Hirofumi
Lecturer, College of Humanities and Social Sciences, Himeji Dokkyo University
A Methodological Reflection for the Practice of Photo-Ethnography

NAKAO Seiji
Associate Professor, Graduate School of Asian and African Area Studies, Kyoto University
How African Narrated “African History”: “African Historiographies” from Local Histories in Africa

NAWATA Hiroshi
Professor, Center for Transdisciplinary Education and Research, Graduate School of Human and Environmental Studies, Kyoto University
Study of the Motoko Katakura Fieldwork Materials Collected in Kingdom of Saudi Arabia

SHIRAI Chiaki
Professor, Faculty of Humanities and Social Sciences, Shizuoka University
Interdisciplinary Study on Reproductive Technology and Childrearing in Modern Asia

YAMANOUCHI Yuriko
Associate Professor, Institute of Global Studies, Tokyo University of Foreign Studies
A Comparative Ethnography of Belonging and Difference in Mixed Heritage Peoples: Cases from Indigenous Peoples in Ocesnia

Center for Cultural Resource Studies

DOI Kiyomi
Associate Professor, Faculty of Literature, Nishogakusha University
Reorientation of Uncertainty in Tourism

OCHIAI Yukino
Professor, Faculty of Agriculture, Ryukoku University
Research on Historical Changes in Forest Resources and Their Uses Based on the Analysis of National Museum of Ethnology Collection: Focusing on the Wood Materials of Tubs and Barrels

Center for Cultural Resource Studies

Object

The Center for Cultural Resource Studies was established on April 1, 2017, with the objective of improving access to cultural resources at the Museum for interdisciplinary and international research.

Development of Cultural Resource Study

The National Museum of Ethnology (Minpaku) owns about 345,000 artifacts, 70,000 items of video and sound resources, 670,000 books, and other research resources such as photographic archives, research database, and field note archives, survey papers, and other ethnological research papers left by cultural anthropologists and ethnologists. These are important cultural resources that relate to the humanity’s cultures and activities, and precious academic resources to reflect on the past, present and future of humanity. The Museum is undertaking projects to improve the shared availability of these cultural resources for interdisciplinary and international research, by publishing the research results and information on these cultural resources through a database called Info-Forum Museum, and through other media including Special Exhibitions, Thematic Exhibitions, and Traveling Exhibitions. The Center supports these research projects, and plans and promotes new projects.

Overseas Visiting Fellows

DANIELS Inge Maria
Professor, University of Oxford
November 19, 2024 – January 3, 2025
The Creative Use of Audiovisual Materials in the Exhibition Space

GERALDO Adriano Godoy de Campos
Professor, Federal University of Sergipe
January 10, 2025 – March 27, 2025
Study on the Arab and Muslim Communities in Latin America

KREIL Aymon Manfred Benedikt
Associate Professor, Ghent University
February 28, 2025 – April 30, 2025
A Social Anthropological Exploration of Spirituality in Arabic Calligraphy

LUCY Riall
Professor, European University Institute
November 1, 2024 – October 31, 2025
Historical Research on Italy’s Informal Empire and the Role of Mediterranean Mobility, 19th and 20th Centuries

SHELLTON Anthony Alan
Professor, The University of British Columbia
February 4, 2025 – March 6, 2025
Innovative Approaches to the Study of the Arts in Museum Anthropology

STRANG Thomas John Kenneth
Honorary Researcher, Canadian Conservation Institute (Ret.)
October 1, 2023 – April 30, 2024
Rethinking Integrated Pest Management for Ethnological Collections.

Those who have been or will be in Minpaku in FY 2024.
(In alphabetical order.)

Research Fellows

FURUSAWA Yuria
Support work for shared use of academic information, with a specific investigation of the Info-Forum archives of human culture

MATSUMOTO Ayako
Investigations and research elucidating the theory and practice of distribution and dissemination of research information using cultural resources

Project Research Fellows

HASHIMOTO Sachi
Assistant work for the cultural resource planning project
“Research on the Preservation and Management of Tangible Cultural Resources”

ISHIYAMA Shun
Research work for promoting “building a digital library of academic knowledge”

KAWAMURA Yukako
Assistant work for the cultural resource planning project
“Research on the Preservation and Management of Tangible Cultural Resources”

KOBAYASHI Naoaki
Research work for the promotion of “building a digital library of academic knowledge”

LIU Jiun-Yu
Work on “Mathematical Prehistory of Homo sapiens - Modeling the Cultural Evolution during the Range Expansion of Paleolithic Modern Humans”

TAIRA Eiji
Work on sign language-related research, research assistance, and management of related projects

TAKEMOTO Naoya
Work for Co-creation Research Project “Establishing Science for Universal Communication” in Co-creation Research Initiatives

Research Fellows, NIHU Center for Innovative Research

Global Area Studies Program Steering Unit

ITO Sanae
Project Assistant Professor

Global Mediterranean

OKAMOTO Naoko
Project Assistant Professor

Indian Ocean World Studies

MATSUI Azusa
Project Assistant Professor

Maritime Asian and Pacific Studies

MOMMA Ippei
Project Assistant Professor

East Eurasian Studies

AKAO Mitsuharu
Project Assistant Professor

Liberal Arts Communicator

KUDO Sakura
Project Assistant Professor

“Digital Humanities” (DH) Projects

NAGAI Masakatsu
Project Professor

Establishing Science for Universal Communication (S_COM)

GUI Rong
Project Assistant Professor

Projects of FY2023

In FY2023, the Center supported the promotion of 2 database establishment projects and 5 database improvement projects in relation building the “Info-Forum Museum for Cultural Resources of the World.” It also hosted an international workshop “Thinking Hunter–gardeners: Anthropological and Archaeological Approaches” at the Museum, as well as a research meeting on Folk Performing Arts in Tokunoshima and Amamioshima and an international workshop “II Taller de Artesanía” on the site. Concurrently, the Center assisted in the preparation and organization of the following exhibitions: special exhibitions (“‘Arte Popular’: The Creative and Critical Power of Latin Americans” and “Divine Affection: Enchanting Images of Hindu Deities”), thematic exhibition (“Screen Prints of Canada’s Northwest Coast Peoples”), collection exhibition (“The Hunter’s View of the Earth”), cooperative exhibition (“Slash-and-Burn Culture in the Kyushu Mountains: Historia Terrace Itsukidani”), traveling exhibitions (“REGNUM IMAGINARIUM: Realm of the Marvelous and Uncanny: Fukuoka City Museum” and “UNIVERSAL MUSEUM: Exploring the New Field of Tactile Sensation: the OHK Okayama Broadcasting Station at KURUN HALL”). Additionally, the center conducted research to improve the joint use of academic resources.

Projects of FY2024 In FY 2024, we will mainly pursue three projects.

Research Promotion and Support for Info-Forum Archives of Human Culture Project

Since FY2022, this Museum has managed an Institution-based Transdisciplinary Project of the National Institutes for the Humanities, entitled “Sustainable development humanities research based on the Info-Forum archives of human culture.”

In 2024, we shall undertake the Basic Research Projects: “Materials on Indigenous Australians” and “Archive of Oceanian Materials” and Promotional Research Projects: “Traditional Music on Early Records in Twentieth Century East Asia” and “Construction and Utilization of Digital Archives on Peruvian Cultural Collection”.

The Center studies standardization and multilingual translations of the artifacts and resources. It also supports the promotion of these projects through database building, editing and publication.

Research Promotion and Support for Special Exhibitions, Thematic Exhibitions and Traveling Exhibitions Project

The Museum implements Special Exhibitions, Thematic Exhibitions and Traveling Exhibitions, in order to publish its cultural resources and related research outcomes. In FY2024, the Museum will show case: special exhibitions for the 50th Anniversary of the Museum’s Founding “Masks in the Performing Arts and Festivals of Japan” and “THE WORLD OF POET-SINGERS” and “MINGU Design Expo–Discovering Sources of Wisdom”, thematic exhibitions for the 50th Anniversary of the Museum’s Founding “Conveying the realities of the Minamata disease” and “Hakka and Japan: Another History of East Asian Relations Created by Chinese Overseas” and “Line and Dots: The Aesthetic Journey of Arabic Calligraphy”, traveling exhibitions “UNIVERSAL MUSEUM: Exploring the New Field of Tactile Sensation: Nogata Tanio Art Museum” and “REGNUM IMAGINARIUM: Realm of the Marvelous and Uncanny: National Ainu Museum” among others. The Center will promote the research that will enable these exhibitions and assist in the running of the exhibitions.

Research for Improving the Shared Availability of Cultural Resources

In FY2024, we will research the ways to promote the interdisciplinary and international joint use of the cultural resources owned by this Museum, and effective ways to contribute to university education, academic research, dissemination of knowledge to the general public, and creation of cultures by their bearers.

Center for Academic Research Development

Object

The Center for Academic Research Development was establish in April 2017, and has assumed the research strategy functions that the Center for Research Development and the Center for International Academic Exchange formerly provided for: national and international shared use and joint research; enhancing infrastructure; and plan and oversee the national and international strategies for the shared use and joint research organizations pioneering new domains. The Center will reinforce the systematic research capabilities of each of our research departments and centers. More specifically, the Center engages in the activities required to promote internationally coordinated or joint research more strategically and systematically, including: improvement in the implementing organization of a research project based on shared use of resources; development, preparation and signing of (national and international) academic exchange agreements and the signing policies thereof; survey of overseas research trends; and information gathering and provision on external finances.

Institutional Research (IR)

Object

The Office of Institutional Research (IR) was established in April 2016 to support the Museum’s planning and decision-making by collecting and analyzing data on the Museum’s research and education and converting the compiled data and analysis results into reference materials.

To fulfill this purpose, the Office mainly does the following: (1) collects and publishes data on research and education; (2) analyzes the data and publishes the results; and (3) provides the data and analysis results for the Museum’s reforms and improvements.

As a member of the National Institutes for the Humanities, the Museum establishes midterm plans and fiscal year plans based on six-year midterm goals set by the Ministry of Education, Culture, Sports, Science and Technology. The Museum also receives evaluations of its research and education from the National University Corporation Evaluation Committee. In addition, the Museum conducts self-inspections and self-evaluations and publishes the findings in a report. The Office of IR collects and analyzes a wide range of data on research and education for these inspections and evaluations.

Minpaku Special Research Projects

Minpaku Special Research Projects is a research program organized independently by the National Museum of Ethnology, collaborating with universities and other research institutes in Japan and overseas. Based on domestic and international academic research trends and social demands, Minpaku Special Research Projects aims to create new academic fields by enhancing interdisciplinary research. During the six years of the third mid-term goals period, starting in FY2016, we adopted the umbrella theme of “Contemporary Civilization and the Future of Humanity: Environment, Culture, and Humans.” For this, we undertook solution-focused approaches to tackle urgent challenges facing our contemporary civilization.

During the six years of the fourth mid-term goals period beginning in FY2022, five research projects will be conducted under the umbrella theme of “Ethnic Groups and Ethnicity in the Post-Nationalist Era.” The research adopts a holistic perspective to the processes of the reconfiguration of ethnic groups and ethnicity in the post-nationalist era. This perspective will include culture, politics, religion, society, environment, and history. In this way, we aim to present new approaches that will contribute to the realization of a diverse and inclusive society where all people respect each other and live together regardless of cultural differences.

List of Minpaku Special Research Projects FY2022 - FY2027

Umbrella Theme “Ethnic Groups and Ethnicity in the Post-Nationalist Era”

Project Leader	Project Title	Category	Project Period
SUZUKI Motoi	Challenges for Museums in the Era of Post-nationalism: Methods of Exhibiting Minority and Indigenous Cultures	Ethnicity and Museums	April 2022 – March 2025
NOBAYASHI Atsushi	Understanding Conflicts Involving the Wills and Intentions of Individuals, Affiliate Groups, and the Nation-State, and the Realization of a Nation-State Comprising Diverse Ethnic and Cultural Group	Ethnicity and the Nation-State	April 2023 – March 2026
MATSUO Mizuho	The Politics of Roots and the Arts/Techniques of Coexistence: Ethnicity and Histories in the Post-Nation-State Era	Ethnicity and History	April 2024 – March 2027
NARA Masashi	Ethnicities and Religions: The Entanglements of Exclusivity and Inclusivity	Ethnicity and Religion	April 2025 – March 2028
NIWA Norio	Political Violence, Conflict, and Ethnicity	Ethnicity and Violence	April 2026 – March 2029

List of Minpaku Special Research Projects FY2016 - FY2021

Umbrella Theme “Contemporary Civilization and the Future of Humanity: Environment, Culture and Humans”

Theme Category: Environment

Project Leader	Project Title	Category	Project Period
IKEYA Kazunobu KISHIGAMI Nobuhiro	Historical Ecology of Biocultural Diversity: Use and Conservation of Endangered Animals, Plants, and Habitats	① Environmental issues and biodiversity	July 2016 – March 2019
NOBAYASHI Atsushi	Human and Natural History on System of Food Production	② Food issues and eco-systems	April 2017 – March 2020

Theme Category: Culture

Project Leader	Project Title	Category	Project Period
NISHIO Tetsuo	Global Area Studies: Towards a New Epistemology for Mapping the Globalising World	③ Cultural conflicts and plural values	April 2020 – March 2023
IIDA Taku	Humanity and Communities in Cultural Heritage in the Age of Digital Technology	④ Cultural heritages and communities	April 2019 – March 2022

Theme Category: Humans

Project Leader	Project Title	Category	Project Period
TERADA Yoshitaka FUKUOKA Shota	Performing Arts and Conviviality	⑤ Minorities and coexistence	April 2018 – March 2024
MORI Akiko NAKAGAWA Osamu	Family Potential in Uncertain Times: Mobility, Technology and Body	⑥ Population issues and family/society	April 2021 – March 2024

Special Theme Category

Project Leader	Project Title	Category	Project Period
SHIMAMURA Ippei	A Comparative Studies on the Cultural Immune Systems against Covid-19	Modern Civilization and Infectious Diseases	December 2020 – March 2024

Projects in FY2023

Project Leader	Project Title
NOBAYASHI Atsushi	Understanding Conflicts Involving the Wills and Intentions of Individuals, Affiliate Groups, and the Nation-State, and the Realization of a Nation-State Comprising Diverse Ethnic and Cultural Group
SUZUKI Motoi	Challenges for Museums in the Era of Post-Nationalism — Methods of exhibiting minority and indigenous cultures
SHIMAMURA Ippei	A Comparative Studies on the Cultural Immune Systems against Covid-19
NAKAGAWA Osamu	Family Potential in Uncertain Times: Mobility, Technology and Body
FUKUOKA Shota	Performing Arts and Conviviality

Public Lecture

“Addiction: Consideration on Ethnicity, Nation and *Shikohin*”

Date November 10, 2023
Coordinator NOBAYASHI Atsushi
The total number of participants 410



International Symposium

The International Symposium of Minpaku Special Research Project for the 50th Anniversary of the Museum’s Founding
“Museums in the Era of Post-Nationalism: Methods of Exhibiting Minority/Indigenous Cultures”

Date February 25, 2024
Coordinator SUZUKI Motoi
The total number of participants 41



Symposium

The Symposium of Minpaku Special Research Project for the 50th Anniversary of the Museum’s Founding
“Special Exhibition ‘Treasures of Indigenous Peoples’ Revisited: An Attempt to Exhibit Minority/Indigenous Peoples at the National Museum of Ethnology”

Date January 20, 2024
Coordinator SUZUKI Motoi
The total number of participants 32



Sustainable Development Humanities Research Based on the Info-Forum Archives of Human Culture (Instituted Project of the National Institutes for the Humanities Transdisciplinary Projects) FY2023

An institution-based research initiative, designated as “Sustainable development humanities research based on the Info-Forum archives of human culture,” is aimed at compiling multilingual “archives of human culture.” This broadly disseminates more than a million of the Museum’s academic resources for online public access, by promoting international collaborative research between researcher communities and indigenous communities, known as the bearers of culture. The archives presumably form a core for educational and research activities, that enable the inheritance of academic resources in anthropology, ethnology, and their related fields, as common international properties.

In 2023, the second year of research, we implemented seven projects: two Basic Research Projects and five Promotional Research Projects. In addition, *Collections Review on 34 Silverworks Labeled “Hopi” in the Denver Art Museum: Reconnecting Source Communities with Museum Collections II* was published as a result of the international dissemination program to promote the internationalization of research. This is one of the instituted projects of the NIHU Transdisciplinary Project.

Project under Promotion:

1. Basic Research

Basic research specifically examines compilation of the archives, that focuses on the Museum’s cultural resources of artifacts, photographs, videos, and bibliographical materials, as well as related academic materials, with the consistent promotion of collaborative research using archives.

2. Promotional Research

Promotional research disseminates results of international collaborative studies, international symposia, and exhibitions, based on a novel database created using existing databases and platforms, and on the compilation of new archives.

Projects of Sustainable Development Humanities Research Based on the Info-Forum Archives of Human Culture

Project Leader	Project Title	Category	Period
HIRANO Chikako	A Study of the Material Culture of Aboriginal Australians, with a Focus on the Minpaku Collection	Basic research	April 2022 – March 2026
NIWA Norio	Building of a Comprehensive Archive on Pacific Collection by Japanese	Basic research	April 2022 – March 2026
NAKAGAWA Osamu	Building an Info-forum Archives for Cultural Collections of Europe	Basic research	April 2024 – March 2028
ONO Rintaro	Bark-cloth and Basketry in Maritime Southeast Asia and Oceania	Basic research	April 2024 – March 2028
FUKUOKA Shota	Traditional Music on Early Records in Twentieth Century East Asia	Promotional research	April 2023 – March 2025
YAGI Yuriko	Construction and Utilization of Digital Archives on Peruvian Cultural Collection	Promotional research	April 2023 – March 2026
KURODA Kenji	A Trans-area Study on the Material-Culture and Cultural Dynamics of Northeast West Asia	Promotional research	April 2024 – March 2026
CHE Sohee	Documentation Research on the 'Attire of the Korean Peninsula' Database	Promotional research	April 2024 – March 2026
MIYAMAE Chisako	Curation of Nordic Commonplace Artefacts at Minpaku Museum's Collection: Exploring Functional Elegance	Promotional research	April 2024 – March 2026



National Museum of Ethnology

Sustainable Development Humanities Research Based on the Info-Forum Archives of Human Culture

Creation of global human symbiotic sciences

Info-Forum Archives of Human Culture
Sharing and Co-creating academic information about human culture online

Archiving research Processes
Sustainable development cycle
Information driven

International and Interdisciplinary joint research and joint use
Realizing a high level of joint research and joint use on a global scale

Intercultural cohesion

The third term Info-Forum Museum

Information accumulation
Advanced information technology
Multilingualization

New research topics

Research collaboration

Variety of academic materials
Specimens/artifacts
Audio/Video materials
Documents/books

Academic resources information

Cross-cultural understanding

International cooperation

Local community

National Museum of Ethnology

350,000 artifacts/70,000 Audio/Video materials

Creative inheritance of one's own culture

Bearers of the Culture

Researcher Community (Academia)

Creation of new areas

Deepening and sharing of humanities knowledge

Collaborating Research Institutes
Domestic universities/
Research institutes

An example of databases available on the Minpaku website

Inter-University Research Projects

These projects are conducted jointly by scholars of the Museum and outside organizations.
In FY2023, projects were jointly undertaken by the Museum scholars and 95 scholars from national universities, 11 scholars from prefectural and municipal universities, 74 scholars from private universities, and 27 experts from other organizations.

FY2023 Research Theme

○ Projects undertaken outside Minpaku

General Research

Coordinator	Research Theme	Research Period
Project 1: New field development		
○ KATAOKA Tatsuki	Toward a New Perspective for Japan Studies Reflecting Overseas Field Experiences	2020.10 – 2024.3
○ YAMAGUCHI Mikako	The Anthropology of the “Depicted Animals”: Focusing on the Becoming in Animals and Humans	2020.10 – 2024.3
○ SHINMOTO Mariko	Comparative Study on the Influence of International Development on Menstruation: From the Perspective of Gender and Medicalization	2020.10 – 2024.3
KISHIGAMI Nobuhiro	Interdisciplinary Comparison of Historical Change, Current of State, and Future of Indigenous Societies along the North Pacific Rim: From a Perspective of Human History	2020.10 – 2024.3
MORI Akiko	Exploring an Alternative Notion of Community in Uncertain Times: Contingent Arrangement of Material, Institutional, and Body Settings	2020.10 – 2024.3
UDAGAWA Taeko	A Study on the Transformation of Food/Foodways Related to Wars and Imperialism: Rethinking the Relationship between Food/Foodways and the Nations	2020.10 – 2024.3
○ SHIRAI Chiaki	Interdisciplinary Study on Reproductive Technology and Childrearing in Modern Asia	2021.10 – 2025.3
○ DOI Kiyomi	Reorientation of Uncertainty in Tourism	2021.10 – 2025.3
TAKEZAWA Shoichiro	The Anthropology of Vulnerability	2021.10 – 2025.3
○ YAMANOUCHI Yuriko	A Comparative Ethnography of Belonging and Difference in Mixed Heritage Peoples: Cases from Indigenous Peoples in Oceania	2022.10 – 2025.3
NAKAGAWA Osamu	Connecting Diverse Logics in Global Capitalism: An Interdisciplinary Approach	2022.10 – 2025.3
IKEYA Kazunobu	Migrations and Livelihoods of Asian Hunter-Gatherers: Diversity of Environmental Adaptations in Human History	2022.10 – 2025.3
○ IWATANI Hirofumi	A Methodological Reflection for the Practice of Photo-Ethnography	2023.10 – 2026.3
Project 2: Sharing of academic resources		
○ UEMURA Yukio	Reconstruction and Revitalization of Japanese Folk Music through Utilizing the Toyo Ongaku Gakkai Sound Archives Preserved in the National Museum of Ethnology	2021.10 – 2025.3
NIWA Norio	A Study on the Formation and Use of Pacific Ethnographic Collections by the Japanese: Focusing on the Toshio Asaeda Collection of the National Museum of Ethnology	2021.10 – 2025.3
○ OCHIAI Yukino	Research on Historical Changes in Forest Resources and Their Uses Based on the Analysis of National Museum of Ethnology Collection: Focusing on the Wood Materials of Tubs and Barrels	2022.10 – 2025.3
IIDA Taku	Museum Collections and Material Culture Studies: Fifty Years of Minpaku	2023.10 – 2026.3

Young Researchers

Coordinator	Research Theme	Research Period
Project 1: New field development		
○ MIYASAKA Shinji	A Project to Touch the Shapes of Tradition by Combining 3D Printing with Traditional Materials and Techniques	2021.10 – 2025.3
○ NAKAO Seiji	How African Narrated “African History”: “African Historiographies” from Local Histories in Africa	2023.10 – 2026.3

Public Presentation of Joint Research Results

Since FY2004, some of the Joint Research Project meetings have been made open to the general public.
In FY2023 the following projects were hosted.

Date	Title	Venue
May 28, 2023	Interdisciplinary Comparison of Historical Change, Current of State, and Future of Indigenous Societies along the North Pacific Rim: From a Perspective of Human History	42
November 3–5, 2023	Interdisciplinary Comparison of Historical Change, Current of State, and Future of Indigenous Societies along the North Pacific Rim: From a Perspective of Human History	77
December 23, 2023	Toward a new perspective for Japan studies reflecting overseas field experiences	60
March 23, 2024	A Methodological reflection for the practice of Photo-Ethnography	55

Visiting Researchers FY2023

As an Inter-University Research Institute, the Museum accepts researchers, young doctoral graduates, and doctoral students from domestic and overseas academic and research institutions who wish to conduct research activities at the Museum as Visiting Researchers for a certain period of time. Instructors at the Museum are assigned to host such researchers and graduates. Visiting Researchers who meet certain conditions are permitted to apply for Grants-in-Aid for Scientific Research as project coordinators at the Museum. In FY2023, we accepted a total of 87 researchers, including 33 who were non-Japanese from 15 countries and regions.

Visiting Graduate Student Program FY2023

The Museum, as an Inter-University Research Institute, accepts students who are enrolled in doctoral courses at Japanese national, public, and private universities. Upon request from their universities, these students may be accepted as Visiting Graduate Student in order to provide them with research guidance on specific themes for a fixed period of time. Visiting Graduate Students can pursue their research under the guidance of Museum scholars, use the facilities, and attend classes at the Anthropological Studies, Graduate Institute for Advanced Studies, SOKENDAI established at the Museum. In FY2023, we accepted one student from private university.

JSPS Grants-in-Aid for Scientific Research

Grants-in-Aid for Scientific Research provided by the Japan Society for the Promotion of Science are intended to foster the progress of unique and pioneering research projects in all fields ranging from the human and social sciences to the natural sciences, in order to promote academic activities in our country. The aid is awarded to research projects which are especially important in terms of current academic trends, organized on the initiative of individual researchers or research groups in academic institutions.

FY2024 Projects Funded

Category	Head	Research Subject	(Thousands of yen)
Fund for the Promotion of Joint International Research (International Leading Research)			
New	KIKUSAWA Ritsuko	Establishing Spatiotemporal Linguistics: A New Approach to Interdisciplinary Research on Language History and Human Movementry and Human Movement	57,590
Total			57,590
Fund for the Promotion of Joint International Research (International Collaborative Research)			
Continued	YOSHIDA Kenji	Innovation in the Study of the Arts in Anthropology: Creating a Platform for International Research in the Anthropology of Images	2,080
New	MATTHEWS, Peter J.	Giant Aroids as Starchy Food Sources in Asia, Oceania and Madagascar	1,820
Total			3,900
Fund for the Promotion of Joint International Research (Fostering Joint International Research)			
Continued	CHINO Shinichiro	Formation Mechanism of Southern Madagascar's Tamarind Forest: A Comparative Study of Local Ecological Histories	12,220
Total			12,220
Grant-in-Aid for Scientific Research (A)			
Continued	ONO Rintaro	Migration and Island Adaptation of Homo Sapiens in Maritime Asia	7,410
Continued	NOBAYASHI Atsushi	Exploring an Indigenous Society in Early Colonial Taiwan by Joining Ethnographic Archives and Field Research	7,670
New	OSHIKANE Hiroyuki	Application of DNA Barcoding Technique for Archaeological Studies	23,010
New	KONAGAYA Yuki	Reconsideration on Mongolian Nomadism: Focusing on Search for Livestock	4,940
Total			43,030
Grant-in-Aid for Scientific Research (B)			
Continued	MATSUMOTO Yuichi	Reconsidering the Chavin Problem: Interdisciplinary Studies on the Emergence of Early Complex Societies in the Andes	3,250
Continued	UDA Shuhei	Elucidation of Cormorant Fishing as Cultural System and Co-Creation of Optimal Inheritance Route in the Era of Animal Welfare.	1,560
Continued	SAITO Akira	A Digital Humanities Approach to the Tasas: Spanish Colonial Rule and Native Andean Society	1,430
Continued	SONODA Naoko	A New Technique for Extending the Life Span of Degrading Acidic Papers	2,860
Continued	YOSHIDA Kenji	Anthropological Study of Immergence of Culture in the Midst of Social Crisis in Africa	3,770
Continued	TAKEZAWA Shoichiro	The Anthropology of Vulnerability: How Can We Talk about People Vulnerable to Sufferings	4,290
Continued	SUZUKI Motoi	Anthropological Study of Latin American "Arte Popular"	5,070
Continued	HIDAKA Shingo	Developing of a Universal Exhibition Guidance System in the Post-Corona Society	6,370
Continued	DEGUCHI Masayuki	The Interdisciplinary Researches between Museology and Accounting on the Paradox of Preservation and Measurement of Cultural Heritage	3,640
Continued	YOSHIOKA Noboru	A descriptive study on the Domaaki language	2,210
Continued	TERAMURA Hirofumi	Archaeological Research on the Spread of Religion and Its Acceptance and Transformation in Silk Road Cities	4,550
Continued	SUEMORI Kaoru	Reproduction and Cognition of Polychromatic Visual Arts in Crepuscular Religious Spaces	5,590
New	NAGANO Yasuhiko	International Survey of a Tibetan Bonpo Ritual	6,370
New	YAMANAKA Yuriko	Ecological Imagination in the Interface of Cultures	5,200
Total			56,160
Grant-in-Aid for Scientific Research (C)			
Continued	TAIRA Eiji	Qualitative Study of Language Use by Bilingual Children with Japanese and Japanese Sign Language	390
Continued	SUZUKI Hideaki	Historical Ethnography on Slavery in the Early 20th Century Persian Gulf	390
Continued	SASAHARA Ryoji	Research on the Formation of Migrant Societies and the Tradition of Festivals and Performing Arts on the Islands of Japan since the Meiji Era	780
Continued	KURODA Kenji	Global Scale of Industrial Production and Economic Integration between Modern Japan and the Middle East	1,040
Continued	NISHIO Tetsuo	Studies on the Intellectual Milieu of Antoine Galland and His Creative Contribution to the Arabian Nights	1,040
Continued	KAWANISHI Eriko	A Study of the Practice of Mediumship and its Transformation in Contemporary England	260
Continued	FUNAYAMA Naoji	A Basic Study on the Utilization and Succession of Folk-Cultural Assets Involving Folk Performing Arts in Southwestern Hokkaido	1,300
Continued	TAKASHINA Maki	Protection of Traditional Cultural Expressions, Focusing on Photographic Materials of Okinawan Rituals and Access to the Records	1,430
Continued	HIRAI Kyonosuke	An Ethnographical Study of the Formation, Use and Agency of the Minamata Disease Movement's Archives	1,690
Continued	NAKAGAWA Osamu	Anthropological Study of the Zucchini Supply Chain	1,170
New	OKADA Emi	Forum-Ethnomusicology on the Polyphonic Singing Culture of the Nagas of Northeast India	1,170
New	KAWASE Itsushi	Building a Model for Cultural Preservation Based on the Production and Use of Visual Ethnography in Africa	1,430
New	NARA Masashi	An Anthropological Study of Exclusivity and Inclusivity in Muslim Communities in Taiwan	1,300
New	TOMITA(KAI) Sarasa	Supporting the Learning of Japanese Sign Language to Enhance Self-Advocacy Skills in Students with Deaf and Hard of Hearing	1,690
Total			15,080

Category	Head	Research Subject	(Thousands of yen)
Grant-in-Aid for Young Scientists			
Continued	HIRANO Chikako	Anthropological Study on the Occurrence and Avoidance of Drinking Trouble in an Australian Nomadic Society	1,040
Continued	MIYAMAE Chisako	The Succession of Beauty in Practical Crafts: Development Archiving and Exhibition Methods in Design Museums	1,430
Continued	SATO Minako	Non-Formal Education Research in the Multilingual Kingdom of Bhutan	910
New	HISAOKA Kae	Research on the Works of Z. Paliashvili (1871-1933): Focusing on Georgian Opera and Sacred Music	1,300
New	MATSUOKA Tomoko	The Normalization of Diplomatic Relations between Japan and South Korea in 1965 and Art Exchanges: Focusing on Changes after Liberation from Japanese Colonial Rule	780
New	KANG Yanggu	Embracing Socialist Reform among the Raglai People in South-Central Vietnam: An Emphasis on Morality and Aesthetics	1,430
New	FUJII Shin'ichi	A Study of Displacement and Survival Strategies of Kiribati Migrants in the Solomon Islands during the Ethnic Conflict	1,300
Total			8,190
Grant-in-Aid for Challenging Research (Pioneering)			
Continued	ITO Atsunori	Museum Anthropological Approach to Develop a Source Community Friendly Public Transmission Model on Digital Image of the "Copyrighted" Ethnographic Collection	4,550
Total			4,550
Grant-in-Aid for Challenging Research (Exploratory)			
Continued	TERAMURA Hirofumi	Research on Food Culture in Ancient Oasis Cities Using Scientific Methods	2,080
New	IKEYA Kazunobu	The Formation of Pig Nomadism from a Synthesis of Genomic Analysis and Ethnography	2,340
Total			4,420
Grant-in-Aid for Research Activity Start-up			
New	FURUSAWA Yuria	A Research on Modern Japanese and Asian Christian Art Collected and Exhibited in the West	1,560
Total			1,560
Grant-in-Aid for Publication of Scientific Research Results			
New	SUZUKI Kota	A Social History of Hibakojin Kagura: Kagura Performer Activities through the Ages	1,400
New	MINAMI Makito	Clothing Culture Digital Archives	5,600
Total			7,000
Grant-in-Aid for JSPS Fellows			
Continued	NAKAO Yukie	Global Care Network for the Disabled: A Case Study of South Asian Organizations in Tanzania	1,040
Continued	FUKAMI Kikue	An Ethnographical Analysis of The Relationship between Parents in American Polyfamilies	910
Continued	ITO Sanae	The Connections between Memorization of the Earthquakes and Disaster Prevention in Nepal	1,430
New	YANAGISAWA Eisuke	A Practical Study of the Collaboration between Anthropology and Art: A Case Study on the Creation of a Sonic Ethnography	1,690
Total			5,070

*Fund for the Promotion of Joint International Research (Fostering Joint International Research) was allowed between FY2022 to FY2024

Research Donations

FY2023

Name of the Donation (Reseach Grants for Art-Related Studies)	Head	Donor	(Thousands of yen)
Heiwa Nakajima Foundation (International Academic Joint Research Grant)	MATSUMOTO Yuichi	MATSUMOTO Yuichi	4,980
Research Grant	TAKAHASHI Haruko	TAKAHASHI Haruko	1,120
The Resona Foundation for Asia and Oceania (Asia and Oceania Research Grant (Publication Grant))	ITO Sanae	The Resona Foundation for Asia and Oceania	1,000
Donation of Shung-Ye Museum of Formosan Aborigines	NOBAYASHI Atsushi	Shung-Ye Museum of Formosan Aborigines	1,900
JFE 21st Century Foundation (Asian History Research Aid)	NISHIO Tetsuo	JFE 21st Century Foundation	1,500
Research Grant	KISHIGAMI Nobuhiro	KISHIGAMI Nobuhiro	240
Total			10,740

Projects Concerning Cultural Resources and Information

Cultural Resource Projects/Information Projects

“Cultural Resource Projects/Information Projects” are based on proposals, and led by our full-time research staff. The aim is to organize and digitize cultural resources held by the Museum and related organizations such as universities, in order to promote their shared use and academic value. The “Cultural Resource Projects” are undertaken in the four areas of survey and collection, artifact management, exhibition, and museum-community alliance. The “Information Projects” are undertaken in the two areas of “video production and information gathering” and “digitization”.

FY2024 List of Cultural Resource Projects

Area	Proposed by	Project Name
Survey and Collection Project	TERAMURA Hirofumi	Collecting of materials for the Special Exhibition: The Merchant’s Stories along the Silk Road–Ancient sites and Oasis cities in Samarkand region- (tentative title)
Exhibition Development Project	SASAHARA Ryoji	Special Exhibition “Masks in the Performing Arts and Festivals of Japan”
Exhibition Development Project	KAWASE Itsushi	Special Exhibition “THE WORLD OF POET-SINGERS”
Exhibition Development Project	HIDAKA Shingo	Special Exhibition “MINGU Design Expo–Discovering Sources of Wisdom”
Exhibition Development Project	HIRAI Kyonosuke	Thematic Exhibition “Conveying the realities of the Minamata disease”
Exhibition Development Project	NARA Masashi	Thematic Exhibition “Hakka and Japan: Another History of East Asian Relations Created by Chinese Overseas”
Exhibition Development Project	AISHIMA Hatsuki	Thematic Exhibition “The Aesthetics of Dots and Lines: Arabic Calligraphy in the Modern World” (tentative title)
Exhibition Development Project	HIROSE Koujirou	Traveling Exhibition “‘Universal Museum’: Exploring the New Field of Tactile Sensation” (Nogata Tanio Art Museum)
Exhibition Development Project	YAMANAKA Yuriko	Traveling Exhibition “REGNUM IMAGINARIUM: Realm of the Marvelous and Uncanny” (National Ainu Museum)
Exhibition Development Project	KIKUSAWA Ritsuko	Traveling Exhibition “ <i>Homō loquēns</i> ‘Talking Humans’: The Science of the Wonder of Language and Languages” (Collaborating with the Department of Medicine, Kyoto Prefectural University of Medicine)
Exhibition Development Project	YAMANAKA Yuriko	International Collaborative Exhibition “REGNUM IMAGINARIUM: Realm of the Marvelous and Uncanny” (China tour)
Exhibition Development Project	ONO Rintaro	Preparation for the Special Exhibition “Boats, Canoes, and Human-Maritime Life in Asia and Oceania” (tentative title)
Exhibition Development Project	TERAMURA Hirofumi	Preparation for the Special Exhibition “The Merchant’s Stories along the Silk Road -Ancient sites and Oasis cities in Samarkand region-” (tentative title)
Exhibition Development Project	SAITO Reiko	Preliminary research for the special exhibition “Ainu Life in the Saru River Region” (tentative title)
Exhibition Development Project	NOBAYASHI Atsushi	<i>Kuroshio</i> Art Project – Preparation for the Thematic Exhibition “Formosa Indigenous Art Today” (tentative title)
Museum Community Alliance Project	KIKUSAWA Ritsuko	Preparing an Online Version of the 2022 Fall Special Exhibition “ <i>Homō loquēns</i> ‘talking human’: Wonders of Language and Languages”

FY2024 List of Information Projects

Area	Proposed by	Project Name
Video Production and Information Gathering Project	ITO Atsunori	Production of the Minpaku Visual Ethnography: “Native American Hopi Textile Artist Reviews the Regalia for the Hopi Social Dance”
Video Production and Information Gathering Project	OKADA Emi	Production of the Visual Ethnography on “Songs of Bengal: ‘The Road to Baul’ ‘The Return of Pata Paintings”
Video Production and Information Gathering Project	TERAMURA Hirofumi	Production of the Minpaku Visual Ethnography “Ancient Sites in Samarkand Region and Silk Road Trade”
Video Production and Information Gathering Project	MIO Minoru	Expansion of the Multimedia Contents “Lives and Religious Practices in Mewar Region of Rajasthan”

Cultural Resource Planning Projects/Information Planning Projects

“Cultural Resource Planning Projects/Information Planning Projects” are implemented continuously, or in a planned manner, to strengthen the Museum’s jointly used infrastructure. The “Cultural Resource Planning Projects” are undertaken in the three areas of artifact-related, exhibition, and museum-community alliance. The “Information Planning Projects” are undertaken in the two areas of video record production and digitization of exhibitions.

FY2024 List of Cultural Resource Planning Projects

Area	Implementation Manager	Project Name
Artifact Project	SUEMORI Kaoru	Taking Pictures of Materials
Artifact Project	The Head of the Information Planning Section	Organization of research materials, computerization, and utilization management/ Materials related
Artifact Project	SUEMORI Kaoru	Organization of research materials, computerization, and utilization management/ Database related
Artifact Project	HIDAKA Shingo	Research on Preservation and Management of Tangible Cultural Resources
Artifact Project	SUEMORI Kaoru	Collection of Artifacts (Individual Collection)
Artifact Project	SUEMORI Kaoru	Collection of Artifacts (Thematic Collection)
Museum Community Alliance Project	UEBA Yoko	Support for Volunteer Activities
Museum Community Alliance Project	UEBA Yoko	Workshop Hosting and Worksheet Exercises
Museum Community Alliance Project	FUKUOKA Shota	Music Day at Minpaku 2024
Museum Community Alliance Project	SAITO Reiko	<i>Kamuynomi</i> Rite, Traditional Ainu Dances
Museum Community Alliance Project	UEBA Yoko	Maintenance of the Min-pack
Museum Community Alliance Project	UEBA Yoko	Revision of the Min-pack “Islam and Life in the Arab World”
Museum Community Alliance Project	OKADA Emi	The Project for Building up Partnership between the Museum and Society
Museum Community Alliance Project	NOBUTA Toshihiro	Practical Study on Using the Museum for People with Intellectual Disabilities “Minpaku <i>Sama-Sama</i> School”

FY2024 List of Information Planning Projects

Area	Implementing Entity	Project Name
Video Production by Subject	FUKUOKA Shota	Production of a Minpaku Visual Ethnography “Javanese Musicians in Japan”
Project for Video Production	Committee for Information Management	Making Panoramic Virtual Tours of Special Exhibitions, Thematic Exhibitions and Collection Exhibitions
Project for Video Production	Committee for Information Management	Making Videos of Special Lectures and Performances
Project for Donation Acceptance	Committee for Information Management	Donation Acceptance of Audio-Visual Materials and Research Archive Materials

The Fourth Term The National Institutes for the Humanities (NIHU) Transdisciplinary Projects

The National Institutes for the Humanities (NIHU) will implement “transdisciplinary projects” spanning six years commencing from FY2022 as fundamental and interdisciplinary research on human cultures, which forms the basis of NIHU. This will lead to functional enhancement to fulfill its mission as an inter-university research institute by expanding academic networks and by creating new fields.

Multidisciplinary Collaborative Projects: Interdisciplinary and Integrated Studies on Local Cultures: Aiming for the Emergence of Novel Communities

Minpaku Unit “Building Effective Utilization Models of Local Cultures” Project Director: HIDAKA Shingo

The sustainability and diversity of local cultures are currently critical in the Japanese Islands, due to frequent natural disasters and the transformation of local communities. Furthermore, the COVID-19 pandemic since 2020 has motivated efforts to establish a society that incorporates new lifestyles. Such circumstances suggest the urgent need for an unprecedented new society.

In a society to be newly created, a real sense of richness that has persistence and diversity that are adaptive to natural disasters and social change is lacking. This hindrance is eliminated through the incorporation of local cultures, with derived and inherited local wisdom and history, cultivated traditionally through daily activities.

Therefore, this study carefully investigated the local Japanese and Taiwanese museums’ activities based on the worldwide inheritance of local cultures, by developing an effective model using these cultures.



Restoration of local traditional cultural assets damaged in natural disasters

Network-based Projects: NIHU Global Area Studies Program

Global Area Studies Program Steering Unit Project Director: MIO Minoru

Conventional regional studies focusing on the essential nature and structure of a certain geographical region is no longer valid in contemporary world where globalization and borderlessness are advancing rapidly in various aspects such as politics, economy, society, and culture. At the same time, new form of nationalism and/or re-creation of the uniqueness of certain region are also arising in many places, and these phenomena has in turn had a great impact on the trajectory of globalization.

In order to keep up with these profound changes, it is indispensable to create a new form of area studies to elucidate the mutual dynamic relationship between the ‘global’ and the ‘areas’. Against these backgrounds, National Institute Humanities (NIHU) has launched a new area studies program, “Global Area Studies Program”, to clarify the mechanism of construction (or its failure) of global order from the perspective of comparison and relevance of regions. We will also seek for new concepts of areas appropriate for the globalizing post-post-colonial age under this program.

For this goal, under steering unit of the Global Area Studies Program, we have set up following four network-based area studies projects. The four research projects will elucidate factors of long-term sustainability and contemporary developments of each area. At the same time, in collaboration with the steering unit of the Program, they will explicate various aspects of relationships among these areas based on movements and exchanges of people, goods, information, and values.

The four centers established in the National Museum of Ethnology are promoting these area studies projects as a core or a sub-core center of each network.

Center of the Global Mediterranean at the National Museum of Ethnology (The core center of the project)
Project Leader: NISHIO Tetsuo

This project’s research has been conducted mainly by the National Museum of Ethnology, in cooperation with three other Japanese bases. This method has two main purposes. The first is deconstruction of an existing area studies framework that divides countries surrounding the Mediterranean Sea into “Europe” in the north, and the “Middle East and North Africa” in the south, comprehensively exploring approaches which elucidate their historical and cultural relations as the “Mediterranean Area.” The second is to pursue joint research exploring the migration of people, goods, and knowledge on a global scale, stretching across the American continent in the west, East Africa and the Indian Ocean in the south, and Central Asia in the east, through the Mediterranean Sea after the Age of Discovery, by applying literature, history, and cultural anthropology as the main approaches along with mutual cooperation. We aim to establish new area studies, by invoking and considering a supra-regional and interdisciplinary approach.

The purpose of the National Museum of Ethnology Base is to consider the opportunities and mechanisms that cut off a specific space and re-designate it as an “area,” due to the migration of people and goods. The development of science and technology since the 17th century, the mobility of people, goods, and information has improved remarkably, leading to the onset of globalization. Although research in the fields of cultural anthropology and history investigating immigration and trade has accumulated, the role of movement in forming an area has not been adequately examined. By comprehensively elucidating mobility by land, sea, and air, we seek a methodology that dynamically grasps the phases in which time and space are regionalized.

Center of the Indian Ocean World Studies at the National Museum of Ethnology (The core center of the project)
Project Leader: MIO Minoru

This area includes the east coast of Africa, the southern Middle East, the Indian subcontinent, and the western part of Southeast Asia, as well as the Indian Ocean itself which connects these regions, and the islands scattered in the ocean. This area has become a field of complex intersection of great civilizations and environments unparalleled in other parts of the world, where the Islamic, the Indic, and the modern Western civilizations have been intertwined for more than 500 years on the basis of tropical or sub-tropical ecology and subsistence systems which are different from those of temperate zone. The mobility of people, goods, and values since ancient times is still dynamic and quite active, even though the paths of these flows have always been changing responding to various constraints. At the same time, this area has become one of the hotspots of modern international politics, along with rising of new regional powers such as China and India.

While keeping in mind the long-term sustainability and changes of this region, Indian Ocean World Studies project will grasp dynamism of various actors’ flows, including natural environment, people, goods, values etc. At the same time, we will elucidate interdisciplinarily how people in this area have developed their own ways of ecological living and wisdoms of co-existence of different values. Specifically, the following four themes have been set for the project: 1) linkage and continuity of movement; 2) hybridity and creativity in literature and ideas; 3) development, medicine, and environment; and 4) peaceful coexistence. The four project centers, including the core-center at the National Museum of Ethnology, carry out its own research focusing one of the themes.

The theme for the center at the National Museum of Ethnology is the elucidation of “the linkage and continuity of movement.” Various flows of people, goods, information, money, and values of the Indian Ocean World are intrinsically expandable beyond any certain geographical boundary, making this world always porous. At the same time, these flows have not always been unidirectional and diffusional, but have moved circular ways. We define these phenomena as “cultural gyres”, and assume that overlapping and entangling trajectories of cultural gyres have shaped, sustained, and transformed the Indian Ocean World over 2000 years. Our aim is to grasp exact trajectories of these flows, and transformation in various levels (individual, local, regional culture and society) incurred by these flows through collaboration of anthropological field studies and historical research in this world.

Center of the Maritime Asian and Pacific Studies at the National Museum of Ethnology
(The core center of the project) Project Leader: ONO Rintaro

This project has been promoted through a network of four bases, centered on the National Museum of Ethnology Base. The project aims to promote new area studies, that simultaneously address multiple areas of East Asia, Southeast Asia, and Oceania. It solely emphasizes on the perspective of sea areas, without focusing on area studies divided by the conventional concept of areas such as states based on land areas or East Asia, Southeast Asia, and Oceania. The common purpose of exploring island environments in the maritime world, and the transformation dynamics between culture and society was achieved by recognizing the presence of fundamental cultural commonality in the area, similar to the “Austronesian” language family area at the bottom. This research also aims at reaching a comprehensive understanding of cross-border movement and networking of people, goods, and information spanning, from Maritime Asia to Oceania in the modern age.

The wave of development in the island environments has changed people’s livelihoods considerably. It is directly linked to the destruction of considerable cultural heritage. This increasingly influences the traditions and acculturation of local communities. For the development of infrastructure and resources in islands, the National Museum of Ethnology Base devotes attention to (1) changes in subsistence activities of agriculture and fishery and their dynamics, which are directly affected by development. The base also clarifies the historical dynamics and current situation of (2) challenges in preserving ruins and cultural heritage that are affected directly by development and their conversion into tourism resources. Finally, it addresses (3) the activities that significantly resist against globalization and development, such as cultural reconstruction and identity reaffirmation.

Center of the East Eurasian Studies at the National Museum of Ethnology Project Leader: SHIMAMURA Ippei

The purpose of this project is to elucidate East Eurasia’s influence on the world, from the perspectives of cultural clashes and well-being. East Eurasia, as a loose concept of area, refers to the wide region circumjacent to China and Russia, including their neighboring Mongolia, the Korean Peninsula, and Japan, and areas close to or related to these countries. With due consideration to the globalization of policies, international relations, and the economy, the project clarifies the actuality of cultures clashing in their religious, cultural, economic, and political activities, and the creation of coexistence based on the modern historical background. It particularly addresses the Chinese, Russians, and their neighboring nations.

While supporting the Tohoku University Base, the core center of this project, the National Museum of Ethnology Base, researchers religion and subculture, specifically addressing how they instill hope in global relations in a phase that differs from the political and economic order. The former socialist bloc is characterized by a connection to institutional religions based outside the bloc, global cultures, including New Age thought, and subcultures derived from the former Western bloc after the 1990s. It is the same in China in that it connects with foreign religions and cultures after the reform and opening-up. For that reason, against the backdrop of eastern Eurasia’s lag in globalization, occurring mostly during the post-socialist era, the National Museum of Ethnology Base clarifies the sense of well-being provided to people by the newly created cultures, and the resultant cultural upheavals.

National Institutes for the Humanities (NIHU) Co-creation Initiatives

The National Institutes for the Humanities encourages the development of research, by achieving the missions of the institutes for six years, from FY2022. It also promotes Humanities Co-creation Initiatives, which are joint research endeavors co-created by various organizations and people within and outside of the institutes.

Co-creation Research Projects

Establishing Science for Universal Communication (S_COM) Principal Investigator: KIKUSAWA Ritsuko

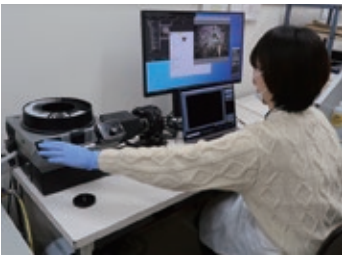
The Museum and the National Institute for Japanese Language and Linguistics collaboratively serve as the principal bases for this project, and promote research in communication symbiotic science. The Museum pursues basic and practical research on visual communication through sign language using accumulated research in sign language studies, non-visual communication using sound and touch, and brain activity related to language use. By primarily examining sociolinguistics, corpus linguistics, and Japanese language education, the National Institute for Japanese Language and Linguistics conducts problem-solving research and studies that address social problems occurring in interpersonal communication, especially those surrounding the social characteristics of each. This accurately elucidates the structure of language issues related to social difficulties. By cooperating with external researchers across various disciplines in the two institutions and its related fields of sociology, cultural anthropology, cognitive psychology, cognitive science, social psychology, medicine, neuroscience, and information engineering, the project seeks solutions to communication problems and paths leading to societal coexistence, including diverse languages and different communication modes.



Special Exhibition “*Homō loquēns* “talking human”: Wonders of Language and Languages”

Building Digital Library for Humanities Project Leader: IIDA Taku

This project aims to establish a platform that digitizes photographs, videos, and sound materials recorded worldwide by Japanese researchers and research institutions, for building an integrated database facilitating shared usage of these academic materials. The National Museum of Ethnology Base supports researchers belonging to universities and research institutions in Japan. It uses a database system for photographic images that has been developed with the National Institute of Informatics, to make the support more effective and more accessible. Through this project, we aim to further facilitate researchers’ and research institutions’ investigation, and to create an interdisciplinary open science foundation by sharing publicly available data in research internationally. In cooperation with the National Institute for Japanese Language and Linguistics Base, which develops integrated database systems for sounds and moving images, we promote cross-disciplinary collaborative researches to develop the discipline of digital humanities.



Digitizing of film photographs at the National Museum of Ethnology

Individual Research Projects FY2024 Research Theme

Director-General

YOSHIDA Kenji	Study of Creation, Transmission, and Representation of Culture: A Museum-Anthropological Approach
---------------	--

Department of Advanced Human Sciences

ICHINO Shinichiro	1. Research Evaluation and Institutional Research of Ethe National Museum of Ethnology 2. Relationships between Primates and Local People in Madagascar
OKADA Emi	1. Traditional Polyphony and Singing Culture of Naga Tribes in Northeast India 2. Transmission of Hindustani Classical Music 3. Songs of Bengal: Baul and Patua
KIKUSAWA Ritsuko	Application of the Geographic Information System(GIS) to the Historical Analyses of Fijian Languages
SASAHARA Ryoji	Construction and Utilization of a Database on Island Festivals and Performing Arts - Focusing on Tokunoshima and Amami Oshima -
SUEMORI Kaoru	Effects of Polychromatic Visual Art and Combustion Light in a Mesopic Religious Space
TAKASHINA Maki	Access to the Okinawan Ritual Photography and Protection of “Traditional Cultural Expressions”
HIRANO Chikako	Anthropological Study on Problem Drinking among Indigenous Australians
HIROSE Koujirou	An Anthropological Study of the Concept of “Barrier-Free”
MARUKAWA Yuzo	Research of Information Service for Cultural Assets based on Informatics of Association
MIYAMAE Chisako	Development of Methods for Utilizing 3D Archive Data to Enhance Communication between Museums and the Public
YAMANAKA Yuriko	Comparative Study of Marvels and the Uncanny: Human Imagination and the Natural World
YOSHIOKA Noboru	Descriptive Linguistics for Northern Pakistan Languages

Department of Cross-Field Research

UDAGAWA Taeko	Reconsideration and Reconstruction of the Public and the Intimate
OTA Shimpei	Integration and Variation of Socio-Cultures in Korea
KASHINAGA Masao	Scripts and Texts of the Tai Dam in Vietnam and in Laos
SUZUKI Motoi	Cultural Anthropological Study of Latin American “Arte Popular”
HAN Min	Anthropological Research on Society, History and Symbols
SHINMEN Mitsuhiro	The Reflection of the Relation between Nation and Ethnicity in Eastern Europe
SUGASE Akiko	Identity Representation and Nationalism of Religious Minorities in Eastern Mediterranean Arab Countries
FUJII Shinichi	Anthropological Research on Peace and Violence
MATTHEWS, Peter J.	Ethnobotany and Prehistory in Asia and the Pacific
MATSUO Mizuho	A Study on the Politics of Ethnicity and the Making of Roots
MINAMI Makito	Research on Population Decline in Nepal Mountain Villages

Department of Modern Society and Civilization

ITO Atsunori	Practical Research on Indigenizing Anthropology Museums
UEBA Yoko	A Comparative Study of Handicraft Culture
SAITO Akira	A Comprehensive Study of the Viceroy Toledo’s General Resettlement in the Colonial Andes
SAITO Reiko	The Movements and Interchanges of People and Things in the Ainu and Their Neighbors
SHIMAMURA Ippei	Anthropological Studies on Religious Phenomena in Mongolia
SUZUKI Kota	Cultural-Historical Research on the Relationship between Political Power and Folk Performing Arts
HIRAI Kyonosuke	An Ethnographical Study of the Formation, Use and Agency of the Minamata Disease Movement’s Archives
FUKUOKA Shota	A Study on Influences of Audiovisual Media on Performing Arts
FUJIMOTO Toko	An Anthropological Study on Kazakh Religious Dynamics in Central Eurasian Steppe
MATSUMOTO Yuichi	Archaeological Study on the Complex Societies in the Prehistoric Andes

Department of Globalization and Humanity

AISHIMA Hatsuki	Aesthetics and Body Culture in Contemporary Egypt
IIDA Taku	Study of National Museum of Ethnology (Minpaku) as Archives
UDA Shuhei	Relationship between Birds and Humans
KURODA Kenji	Self-Other Relationship between Japan and the Middle East
SUZUKI Hideaki	Western Indian Ocean World from Perspective of Mobility
CHE Sohee	The Transformation of Korean Society and Gender Through Objects
NAKAGAWA Osamu	Ethnographic Study of Capitalism
NIWA Norio	Anthropology of Support
NOBUTA Toshihiro	1. An Anthropological Study on Indigenous Peoples in Malaysia 2. An Anthropological Study on Intellectual Disability and Well-being
MIO Minoru	Anthropological Study on Transformation of Religion and Culture in Western India
YAGI Yuriko	A Study on the Offering and Religiosity of Contemporary Andean People

Center for Cultural Resource Studies

ONO Rintaro	Study of Island Migration, Subsistence, and Cultural Heritages in Maritime Asia and Oceania
KAWASE Itsushi	The Study of the Theory and Practice of Ethnofiction
KAWANISHI Eriko	An Anthropological Study of Alternative Spirituality and Religion
TERAMURA Hirofumi	Archaeological Research on the Propagation of Religion and Its Acceptance and Transformation in Silk Road Cities
NARA Masashi	An Anthropological Study of Exclusivity and Inclusivity in Muslim Communities in Taiwan
NOGUCHI Hiroya	Research on Prestige Goods and Social Complexity of Hunter-Gatherer Societies in the North Pacific Rim
NOBAYASHI Atsushi	Dynamics of Ethnicity in Taiwan
HIDAKA Shingo	Building Effective Utilization Models of Local Cultures
MISHIMA Teiko	A Study on the Plural Significance of Migrant Phenomenon: From the Work Ethics of African Merchant Migrants
WINCHESTER, Mark	Historical and Theoretical Research on Modern and Contemporary Ainu Literature, Art, Politics, and Discourse

Honors and Awards

Award Recipients	Date	Awards
HASHIMOTO Sachi	June 25, 2023	The 16th Japan Society for the Conservation of Cultural Property Research Encouragement Award
NIWA Norio	August 19, 2023	The Geographic Education Society of Japan Publication Culture Award FY2023 (3rd)
HIROSE Kojiro	December 19, 2023	The Commendation of Commissioner for Cultural Affairs FY2023

Dissemination of Research Findings Note: Those with no venue cited were held in the Museum.

The Museum promotes active dissemination of research findings, via symposia, research forums, and participation of staff in international academic meetings using the “Research Results Presentation Program” under the Director-General’s Leadership Program. Using various external funds, the Museum has conducted numerous symposia and forums in FY2022 (see below). For information about Minpaku Special Research Projects symposia and forums, please see p. 8. and 9.

Public Academic Lectures

The Museum organizes public academic lectures in Osaka and Tokyo. These facilitate cross-cultural understanding and help to increase public recognition of the Museum.

Public Lecture

“Addiction: Consideration on Ethnicity, Nation and *Shikohin*”

Date	November 10, 2023
Venue	Nikkei Hall (Tokyo) with online streaming
Lecturers	MATSUMOTO Toshihiko HIRANO Chikako
Moderator	NOBAYASHI Atsushi
Attendance	410
Co-host	NIKKEI INC.

Public Lecture [50th Anniversary Commemorative Project]

“Creating Japanese Masks: Kagura Masks Thriving in the Modern World”

Date	March 1, 2024
Venue	Oval Hall (Osaka) with online streaming
Lecturers	SUZUKI Kota YOSHIDA Kenji TAKEHARA Masaya KOBAYASHI Taizo SASAHARA Ryoji
Moderator	YAMANAKA Yuriko
Attendance	465
Co-host	Mainichi Newspapers



Workshop and Symposium

International Workshop

“The Guatemalan Mayan Costume Today: Wear it, See it, and Appreciate it”

Date	May 13, 2023
Coordinator	SUZUKI Motoi
Fund	Research Results Presentation Program
Participants	43

The International Symposium of Minpaku for the 50th Anniversary of the Museum's Founding

“Conservation of Museum Collection: Past, Present, and Future”

Date	February 10 – February 11, 2024
Coordinator	SUEMORI Kaoru HIDAKA Shingo
Fund	Research Results Presentation Program, Cultural Resource Planning Projects, and Transdisciplinary Project
Participants	454

Publication of Research Results FY2023

Publications by the Museum

Bulletin of the National Museum of Ethnology

The Bulletin of the National Museum of Ethnology is a research journal that contribute to the advancement of ethnic studies and cultural anthropology. It publishes articles, book reviews, documentary materials, and research notes related to ethnic studies, anthropology, and related fields. Published four times a year.

Vol. 48, No. 1 **Research Note**
KONDO Shiaki and Chikako HIRANO, [Indigenous People and Digitalized Society: Toward a New Framework of Indigenous Studies](#)
Research Resources
NISHIO Tetsuo and Naoko OKAMOTO, [Premier voyage de l'Histoire arabe de Sindabad Le Marin par François Pétis de La Croix: Traduction japonaise et annotations](#)
IKARI Yoko and Ryoji YAGINUMA, [Masao Oka and the “Nunamiut”: A New View on Masao Oka through the Alaska Survey Materials at the Center for the History of Meiji University](#)

Vol. 48, No. 2 **Article**
HIRAI Kyonosuke, [Social Conditions for the Success of Museum Activities: Soshisha and Transformation in the Minamata Disease Field during the 1990s](#)
Research Note
MIYAMAE Chisako, [Digital Technology Strategy Trends in Norwegian Museums](#)

Senri Ethnological Studies (SES)

Senri Ethnological Studies presents individual works, article collections, and annotated bibliographies regarding specific peoples, regions, or themes, with the goal of publicizing in Japan and overseas the results of research conducted by the Museum. An occasional publication.

Senri Ethnological Reports (SER)

The purpose of Senri Ethnological Reports is to publicize as quickly as possible the results of research conducted by the Museum’s faculty, cooperating faculty, and research fellows. SER publishes the results of field investigations regarding specific peoples, regions, or themes that require preliminary reports, as well as items of a source material nature such as bibliographies and data collections. Published in Japanese and other languages. Occasional publication.

TRAJECTORIA

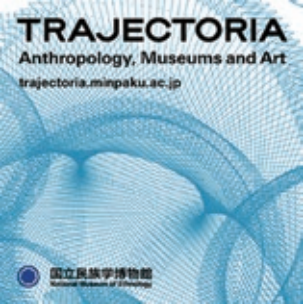
TRAJECTORIA is an international multimedia peer-reviewed journal situated at the intersection of anthropology, heritage studies, museum studies, and the arts. It is published annually online by the National Museum of Ethnology.

Vol. 5 **Multimedia Articles**
POLONI Anna Estel, [Streets Are Not Communities: Visualising Redevelopment in Belfast](#)
SAWAZAKI Kenichi, Kae AMO, Yo NONAKA, Shuta SHINMYO, Mamoru HASEGAWA, Ahmed ALIAN, and Yunus ERTUĞRUL, [Emergent Use of Visual Media in Young Muslim Studies](#)
HUNT Lucy, [Drawing \(Across\) Borders: Reflections on the Use of Creative Visual Communication in Ethnographic Research with/for Young Refugees](#)
NYAMBE Sikopo, Yoshimi KATAOKA, Samuel HANYIKA, and Taro YAMAUCHI, [“I See You”– Tackling Peri-Urban Water, Sanitation, and Hygiene by Employing Visualisation Strategies with Children and Youth in Lusaka, Zambia](#)
Carte Blanche
AHMADOU Mouadjamou and Yushi YANOHARA, [Doing Visual Anthropology in Northern Cameroon: Sharing Stories/Histories through Dialogue](#)

Minpaku Tsushin Online

Minpaku Tsushin Online is a magazine that describes the academic characteristics and unique features of and achievements resulting from individual research projects conducted at the Museum in a manner that is comprehensible to researchers and the general public. The magazine launched online publications in FY2019 and has published electronic books.

No. 8 **Final Report**
Minpaku Special Research Project Global Area Studies: Toward a New Epistemology for Mapping the Globalizing World
NISHIO Tetsuo and Kenji KURODA, [Toward an Empathetic Recognition of the Globalizing World](#)
Inter-University Research Project A Study on the Dynamism of Tourization and De-tourization in the Age of Globalization
NARA Masashi, [A New Perspective on Tourism Phenomena](#)
Inter-University Research Project Anthropological Study of Human Burial Practice and Culture in Asia and Pacific Islands
ONO Rintaro, [Modern Human Mortuary Practice and System in Island World](#)
Inter-University Research Project Reevaluation of Anthropological Theories in the Realm of Chinese Studies: 12 Topics
KAWAI Hironao, [Anthropology of China and Anthropology of Civilization](#)
Inter-University Research Project Re-construction of the Notions of Movement in Human History: With Focus on Friction between “Free” and “Unfree”
SUZUKI Hideaki, [What has emerged from rethinking mobility in the face of illiberal mobility](#)
Inter-University Research Project Dietary and Staple Food in the Sustainable Society
NOBAYASHI Atsushi, [The Time and Space of Staple Foods: Essential Characteristic of the Human Diet](#)
Inter-University Research Project The Anthropological Study of Historical Memory and Emotions on the Intercourse with Other Peoples in Oceania and Island Southeast Asia
KAZAMA Kazuhiro, [Historical Memory and “Historicity” in an Era of Uncertainty](#)



Inter-University Research Project The Dynamics of Frontier Spaces in Contemporary Sub-Saharan Africa, South-East Asia and Latin America
SAGAWA Toru, [Imagination and Action/ Enactment in Frontier Spaces](#)
Inter-University Research Project Ethnography of Capital and Power: Towards an Ecology of Publicness
NAITO Naoki, [Anthropology of Parasitism and Dependence: Exploring Political and Economic Practices beyond Norms](#)
Inter-University Research Project Production and Consumption of Traditional Textiles: The Transformation of Local Perceptions through the Politics of Cultural Heritage and Tourism
NAKATANI Ayami, [Towards an Anthropology of Cloth](#)
Inter-University Research Project Narrative Politics of “Tolerance / Intolerance” in the Global Era
YAMA Yoshiyuki, [Designing a Space to Talk to Each Other: From the Perspective of Community Development](#)
Inter-University Research Project Morality of Neo-liberalism
TANUMA Sachiko, [We’ve Done Collaborative Ethnographic Study of Neoliberalism](#)
Inter-University Research Project Relationship between Knowledge of Anthropology / Folklore and Nation / State: Nationalism and Intelligence in the First Half of the 20th Century
NAKAO Katsumi, [Social History of Anthropology and Politics](#)
Inter-University Research Project Rethinking Ethnographic Records of Seiichi Izumi with Emphasis on Saru River Research
ONISHI Hideyuki, [Repatriation of Ethnographic Data as Indigenous Knowledge](#)
Inter-University Research Project Conservation Science Research for the Establishment of Sustainable Collection Management and Museum Environment
SONODA Naoko, [A Changing World and Conservation Science](#)
Inter-University Research Project Interactions between Sensusivity and Institutions: Examining Evocation and Valuation in Art Practices
OGATA Shirabe, [Fieldwork in the Midst of Sensusivity and Institutions, or in between Them](#)
Inter-University Research Project Anthropological Studies of Mobilities and Materialities
FURUKAWA Fukachi, [Push through the Material World](#)

No. 9 **Start Up**
NIHU Transdisciplinary Project A Study of the Material Culture of Aboriginal Australians, with a Focus on the Minpaku Collection
HIRANO Chikako, [Connecting Materials and People: Toward the Creation of New Knowledge](#)
NIHU Transdisciplinary Project Building of a Comprehensive Archive on Pacific Collection by Japanese
NIWA Norio, [What Did the Japanese Collect in the Pacific?: Building a Portal to Consider the History of Collecting](#)
NIHU Transdisciplinary Project Traditional Music on Early Records in Twentieth Century East Asia
FUKUOKA Shota, [Creation of a Database of Phonograph Records Produced for Pre-war Korea and Taiwan](#)
NIHU Transdisciplinary Project Construction and Utilization of Digital Archives on Peruvian Cultural Collection
YAGI Yuriko, [Andean Folk Performing Arts Today](#)
Inter-University Research Project A Methodological Reflection for the Practice of Photo-Ethnography
IWATANI Hirofumi, [Doing Ethnography Taking Advantage of Photographs: Elaboration and Sophistication of the Basic Model of Photo-Ethnography](#)
Inter-University Research Project Museum Collections and Material Culture Studies: Fifty Years of Minpaku
IIDA Taku, [Public Approach in Material Culture Studies](#)
Inter-University Research Project How African Narrated “African History”: “African Historiographies” from Local Histories in Africa
NAKAO Seiji, [Inquiry into Historical Knowledge from the Perspective of “African Historiographies”](#)
Final Report
Inter-University Research Project A T-shaped Interdisciplinary Approach to Cormorant Fishing Culture in Japan
UDA Shuhei, [The Relationship between Wild Cormorants and the Japanese People over the Past 1,500 Years](#)
Inter-University Research Project Relationships between Indigenous Peoples and Information Societies
KONDO Shiaki, [Looking into the Future of Indigenous Studies through Digitalization](#)
Research Trends
MIYAMAE Chisako, [Use of Digital Technology and Digital Strategy in Norwegian Museums](#)
MATSUMOTO Ayako, [A Place for Dialogue Building Creative Local Communities: Islander Summit Ishigaki and Tsuwano Conference](#)

Publications outside the Museum

KAZAMA Kazuhiro and Norio NIWA (eds.), [Anthropology of Memory and History: Experiences of War, Migration, and Contact with Others in Island Southeast Asia and Oceania](#), Fukuyosha
KAWAI Hironao, Masashi NARA, and Min HAN (eds.), [Chinese Ethnography: 100 Years of Progress and Prospects](#), Fukuyosha
KISHIGAMI Nobuhiro (ed.), [Indigenous Cultures of the North Pacific: History, Language, and Society](#), Rinsen Book
LIU, Lin yu and Shota FUKUOKA (eds.), [The Modernity of Voices Heard on Gramophone Records: Japan, Shanghai, Korea and Taiwan](#), Stylenote



Minpaku Visual Ethnography

Minpaku Visual Ethnography is a DVD series created for research and educational purposes. The contents included visual works recorded during fieldwork. They are distributed to universities and research institutions nationwide and to national and public libraries.

Released in FY2023

Volume 50 TERADA Yoshitaka, FUKUOKA Shota, Cambodia's Ethnic Minorities: Their Life and Gong Music
Volume 51 SAKURAI Tetsuo, Korean Court Music and Travelling Entertainers
Volume 52 KONAGAYA Yuki, Mongolian Leaders in the 20th Century: Industry, Pastoralism, and Agriculture

Minpaku Repository

By using NII’s (National Institute of the Information) institutional repository system, the Minpaku Repository, which includes in its holdings Minpaku’s own publications, allows an open access to Senri Ethnological Studies, Senri Ethnological Reports, the Bulletin of the National Museum of Ethnology, Senri Ethnological Research Reports Supplements, Minpaku Tsushin, National Museum of Ethnology Info-Forum Museum, electric journal “TRAJECTORIA”, and authorized theses and dissertations which were published outside of Minpaku. As at the end of FY2023, the total number of publications in the repository was about 5,485. The average number of paper downloads was about 67,718 per month.



Joint-Use Facilities for Scientific Research

Purpose of Establishment

The museum has nondestructive testing and material analysis equipment systems to conduct primary analysis of folklore materials, cultural assets, and museum materials. The facilities was established in December 2017 to promote the active use of the systems by various organizations and researchers in cultural anthropology and relevant disciplines in its peripheral domains thereby contributing to increased joint use in scientific researches.

List of Equipment

- X-ray CT scanning system
- 3D printer
- Three-dimensional measuring system
- Pyrolyser gus chromatograph - mass spectrometer
- Ion exchange chromatograph
- X-ray fluorescence spectrometer
- Temperature and humidity chamber
- Fourier transform infrared spectrophotometer (FT-IR)
- Digital microscope



X-ray CT Scanning System



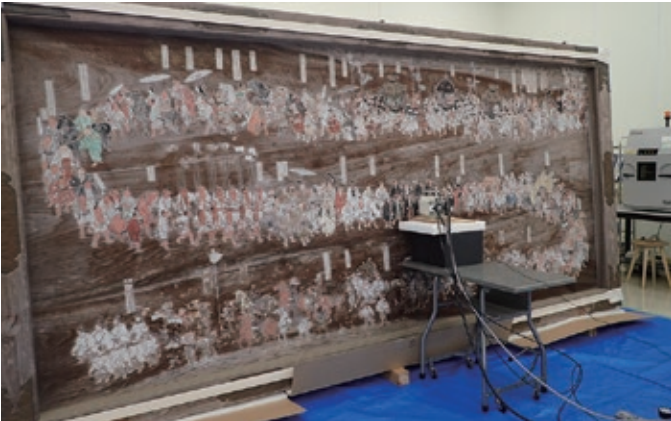
3D Printer

Records of Use

2021	
Records of Use	Organizations That Used the Facilities
12 cases	Tenri University Sankokan Museum, Cultural Heritage Disaster Risk Management Center, Soshisha; Minamata Disease Support Center, Kosetsu Museum of Art, Itoigawa City Board of Education, Otsu City Board of Education, Kesennuma City Board of Education, Yamatotakada City Board of Education, Nou Hakusan Shrine, Oka Bokkodo Co.,Ltd, WORDSPRING.inc, etc
2022	
Records of Use	Organizations That Used the Facilities
17 cases	Kobe University, Otsu City Citizen Affairs Department Cultural Properties Protection Division, Kawasaki City Museum, Otoyō Town Board of Education, Kesennuma City Board of Education, Murakami City Board of Education, Asahiya Preservation Society, Daitoku-ji Temple, Nou Hakusan Shrine, MITSUWA FRONTECH CORP., Oka Bokkodo Co.,Ltd, WORDSPRING.inc, etc
2023	
Records of Use	Organizations That Used the Facilities
20 cases	Japan Center for International Cooperation in Conservation, Samarkand Institute of Archeology, Nara Prefectural Museum of Folklore, Handa City Museum, Nobeoka Castel/Naito Memorial Museum, Kijiya Folklore Museum, Kesennuma City Board of Education, Murakami City Board of Education, Daitoku-ji Temple, Muryo-ji Temple, Nou Hakusan Shrine, Oka Bokkodo Co.,Ltd, etc



Examination Using X-ray CT Scanning



Examination Using X-ray Fluorescence Spectrometer

How to Use

Please contact the Artifact Management Unit of the Information Planning Section if you are interested in using the systems.

Artifact Management Unit of the Information Planning Section

TEL +81-6-6878-8392

FAX +81-6-6878-8242

Mail hyohons@minpaku.ac.jp

Minpaku Library

Service Information

Daily from 10:00 a.m. to 5:00 p.m.(Entry permitted until 4:30 p.m.), except Sundays, National Holidays, and days that the Museum is closed.
Visitor qualifications: The library is open to all. The library card is required for lending books. Some materials may not be available.
URL <https://www.minpaku.ac.jp/sharing/library>

1. Encouraging Educational and Research Activities

Minpaku’s library collection includes many highly specialized works. Facilities include four microfilm readers and a color copy service. The library is staffed by qualified librarians and provides full support for the educational and research activities expected of an Inter-University Research Institute.

2. Promoting Public Access to the Library Catalog through the National Institute of Informatics

In FY2023, printed materials in 21 languages were cataloged, and the repository’s holdings reached 642,678 volumes.
Under the NACSIS-CAT (a comprehensive national database of general indices) Retrospective Entry Project, 3,160 microfiche records (books 3,160 items) were entered. With this, 98% of Minpaku’s library data have now been entered.

3. Social Contributions

All users can check out books from the library. As of FY2023, the library had 198 outside registered users making regular use of the library, who borrowed 1,860 items.

4. MINPAKU Library Catalog

The library catalog is open to the public and can be searched by anyone, anywhere from a personal computer or mobile phone. In FY2023, the catalog was accessed from computers 1,491,134 times and from mobile phones 173 times.

Research Archives

Since its establishment, the Museum has accumulated a wide range of resources, like research notes and papers of anthropologists and ethnologists, including audio-visual records from their fieldwork. To make good use of these materials, the Archives group under Information Management Committee continued in FY2023 to investigate the condition of archive resources and to develop inventory lists. The Museum will investigate continuously the condition of archive resources and develop and digitalize inventory lists, with the aim of making them open to public.

- AOKI Bunkyo Archive
 - ISHIGE Naomichi Archive
 - IZUMI Seichi Archive
 - INADA Koji: Japanese Folktales and Their Related Materials Archive
 - IWAMOTO Kimio Archive
 - UCHIDA Isao: East Asian Culture Archive Mainly for Taiwan and Japan in 1930s
 - UMESAO Tadao Archives
 - EGUCHI Kazuhisa: AfricaAsia Language Archive
 - OUCHI Seiko Archive
 - OKI Morihiro Archive (Indian Ethnological Cultural Resource Archive)
 - KATSURA Yonenosuke Archive
 - KANO Tadao Archive
- KIUCHI Nobuyuki Archive
 - KIKUZAWA Suelo Archive
 - KURITA Yasuyuki and BEFU Harumi: Japanese Gift-giving Archive
 - KOBAYASHI Yasuyoshi: Southern Taiwan Indigenous People Archive
 - SHINODA Osamu Archive
 - SUGIURA Kenichi Archive
 - The Japanese Scientific Expedition for Nepal Archive
 - HIJIKATA Hisakatsu Archive
 - MABUCHI Toichi Archive
 - MARUTANI Akira: Kutsuki Village Harihata Life Data Archive
 - “Regional Typology of Japanese Culture Study Group” Archive

Umesao Archives

April 2013 saw the creation of the Umesao Archives, which includes fieldnotes, sketches, photographs, notes, draft manuscripts, printed works, review articles related to his works, and other academic resources produced by Minpaku's first Director-General, UMESAO Tadao. Archivists there, documenting and shelving this set of materials, and providing support primarily for scholarly research, also support visitors for academic purposes.



Library Reception Counter



Current Periodicals Section



Neatly Archived Materials

Materials

Items in the Museum Collections Offered for Loan FY2023

In addition to using the items in its collection for internal research activities, the Museum offers items for loan to universities, other museums, and external organizations for educational and research purposes as part of its efforts to contribute to the public interest. To inquire about borrowing items from the Museum’s collection, contact the Minpaku Collections Help Desk. A total of 247 inquiries were received during FY2023.

Minpaku Collections Help Desk

TEL / FAX +81-6-6878-8213

URL <https://www.minpaku.ac.jp/sharing/guide/helpdesk>

1. Number of Loans Made: 10, Number of Items Loaned: 381

Among the projects listed above, those for which the Museum’s lending resources comprise more than 50% of the entire exhibit items are the following:

Borrower	Exhibition Title	Loaned Items	Exhibition Period	Items Loaned/Total Number of Items Loaned, % of Loaned Items Relative to the Entire Exhibition
Fukuoka City Museum	Special Exhibition “REGNAM IMAGINARIUM -Rearm of Marvelous and Uncanny-”	National Museum of Ethnology Special exhibition held in 2019. Related Documents	March 11–May 14, 2023	256 items/330 items, 78%
Yamaguchi Prefectural Art Museum	“KENJI SATO WONDER / MICROCOSM”	Ghanaian coffin etc.	April 14–June 11, 2023	19 items/19 items, 100%
Gunma Museum of Art, Tatebayashi	“KENJI SATO WONDER / MICROCOSM”	Ghanaian coffin etc.	July 15–September 18, 2023	13 items/13 items, 100%
Sakai City Museum	2023 Series of Intangible Cultural Heritage Exhibitions Traditional Textiles from Asia: Focusing on Chinese, Republic of Korean, and Japanese Textiles	Women's costumes, textile-related tools, etc.	September 5–October 1, 2023	22 items/22 items, 100%

2. Number of Special Loans (i.e., Loans for the Purpose of Photo-shooting, Close Examination for Research or Loan of Original Film): 85, 920 items

Of the above, 16 loans were made to universities for the use of photographs as references for survey research and writing, 15 were made to museums for the use of photographs in survey research and exhibitions.

3. Number of Loans of Audio-Visual Materials: 127, Number of Items Loaned: 18,688

Of the above, 43 loans were made to universities (937 items), and 19 loans to individual researchers and research groups (726 items).

4. Books and Periodicals

Inter-Library Loan
Photocopy Outbound: 6,786 (of which 5,872 were copied in the library) / Photocopy Inbound: 358
Book Loan Outbound: 401 / Book Loan Inbound: 250

Use of original film or photo-shooting: 8
(of which 4 was for the use of photos as references for survey research and writing)

5. Research Archive Materials

Number of browsing instances: 28
Number of instances of special utilization: 8



Artifact Storage Area

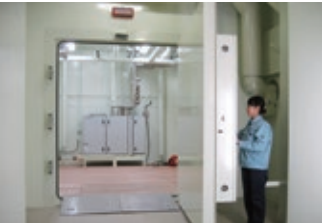
Storage of Academic Materials

The Museum has accumulated a large collection of academic materials through its research. Many of the materials are organic artifacts that generally have the least resistance to insect and fungus damage. Therefore, the Museum takes special measures to repel and kill insects and protect its collection. For example, newly acquired artifacts from abroad are taken to a fumigation chamber where they are treated with chemical insecticides and germicides, because the natural environment and ecosystem of their place of origin are substantially different from those of Japan. Artifacts that have insect damage in Japan, however, are subjected to a non-chemical insecticidal process as required, due to the nature of the materials. In this way, different insecticidal processes are used, depending on the place of origin, the extent of damage, and the nature of the materials. To enhance insecticidal efficiency and better protect artifacts from insect damage in a unique way, in 2007 a large high/low temperature walk-in treatment chamber was installed in the Museum and the existing fumigation chamber was upgraded to a multi-functional chamber capable of carbon dioxide treatment and low oxygen concentration treatment. Also, a catalytic combustion type chemical abatement system was introduced to ensure the safe treatment of waste chemicals, thus realizing a materials management system that is friendly to people, artifacts, and nature.

These state-of-the-art systems are one of the results of the research on the conservation science of artifacts that the Museum and other university researchers have been jointly conducting to ensure effective use of its artifact collection.



The High/Low Temperature Walk-in Treatment Chamber



A Multi-functional Fumigation Chamber Capable of Carbon Dioxide and Low Oxygen Concentration Treatments

Utilization of Minpaku for University Students and Faculty Members

We have established a system to encourage wide-ranging utilization of our research outcomes, exhibits, archived resources, cultural and academic information and facilities, for university education and research.
URL <https://www.minpaku.ac.jp/teacher/university/manual>

Utilization of Exhibition Halls for Lessons

If you wish to use the Exhibition Halls for a lecture, seminar or official event (such as an orientation meeting for new students) of your university under the supervision of a faculty member, we will waive the admission charges, if you apply before the event.

If a faculty member can not supervise the event, or if a professional or specialized training college wishes to use the Museum for a specialist training course, the admission charges will be discounted upon presenting the syllabus or any document that describes the syllabus content.

Use of the Library

We have approximately 698,000 books and other media resources that focus mainly on cultural anthropology and ethnology. We encourage visits to the Library as a part of university education.

Use of Artifacts and Resources

We have approximately 345,000 artifacts and resources collected from all over the world. The objects held at Minpaku are available for investigation, photography, and image use in lessons and research.

Use of Audio-Visual Materials

We have approximately 70,000 Audio-Visual Materials from all over the world, including those produced by Minpaku. You can view about 625 Videotheque Programs on DVD. Some video materials are distributed through online streaming to make them available for online classes.

Use of Databases

An enormous amount of information is provided in our databases for collections and research results.

Development of Young Researchers

“Minpaku Junior Researcher’s Seminar” is regularly held to promote joint use of the museum by young researchers. The two-day seminar consists of a keynote speech by museum faculty and presentation and discussion by participants. Additionally, it organizes library and storage area tours for young researchers to know more about various joint use systems and a facility directory.



Use of Exhibition Halls

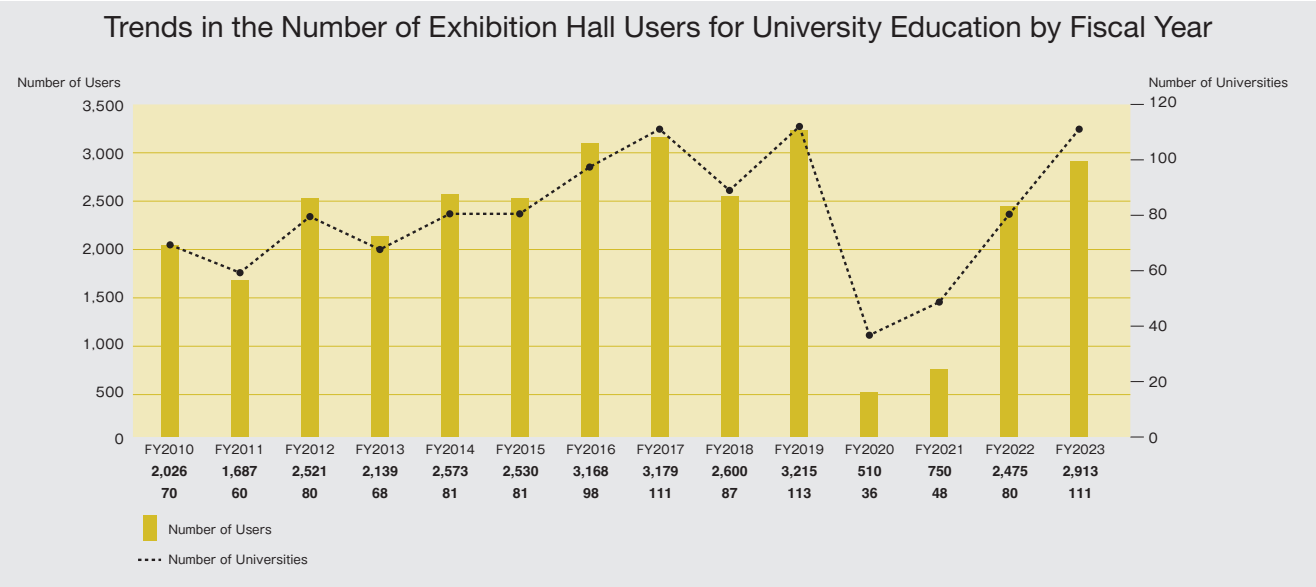


Use of Databases



Minpaku Junior Researcher's Seminar

Records of Use (Free-of-charge Use) 111 Universities, 2,913 users (FY2023)



Exhibitions

Concept and Organization of Exhibitions

At the National Museum of Ethnology, exhibitions are designed to present the latest achievements of anthropological, ethnological and other related scientific research to the public through a variety of media. In doing so, the Museum hopes to enhance public awareness of different cultures around the world and foster greater cross-cultural understanding. The exhibitions consist of Main Exhibitions and the Special Exhibitions. The Main Exhibitions are mostly permanent, and are designed to deepen understanding among visitors of cultural diversity and commonality. The Special Exhibitions, on the other hand, highlight specific topics and are held several times annually for a limited period of time.

Main Exhibitions

The Main Exhibitions are arranged into regional and cross-cultural exhibitions. The regional exhibitions cover Oceania, the Americas, Europe, Africa, and Asia, including Japan. The regional exhibitions start with Oceania, and progress as if traveling eastwards around the world to finish in Japan.

This arrangement allows visitors to view Japanese culture in comparison with other cultures. In designing the exhibitions, the National Museum of Ethnology adhered to the notion that all human cultures around the world have equal value; the notion has remained unchanged since the inception of the Museum. Accordingly, the exhibitions are designed to help visitors respect cultural differences among peoples, represented in the rich diversity of human lifestyles. These exhibitions are also characterized by their emphasis on clothing, food and housing, which gives visitors a clear idea about lives in different regions around the world. The cross-cultural exhibitions, on the other hand, focus on specific themes, not regions, and currently accommodate exhibitions on music and language.

Given the substantial changes of the social and cultural situation in the world since Minpaku’s opening in 1977, the Museum has been renovating its exhibitions since FY2008, and it has completed in FY2016.

In the Thematic Exhibition Galleries in the Main Exhibition Hall, temporary exhibits display themes related to contemporary issues and cutting-edge research. Other individual themes are also presented.

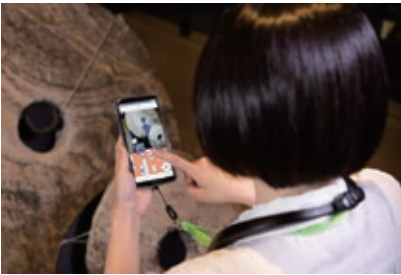
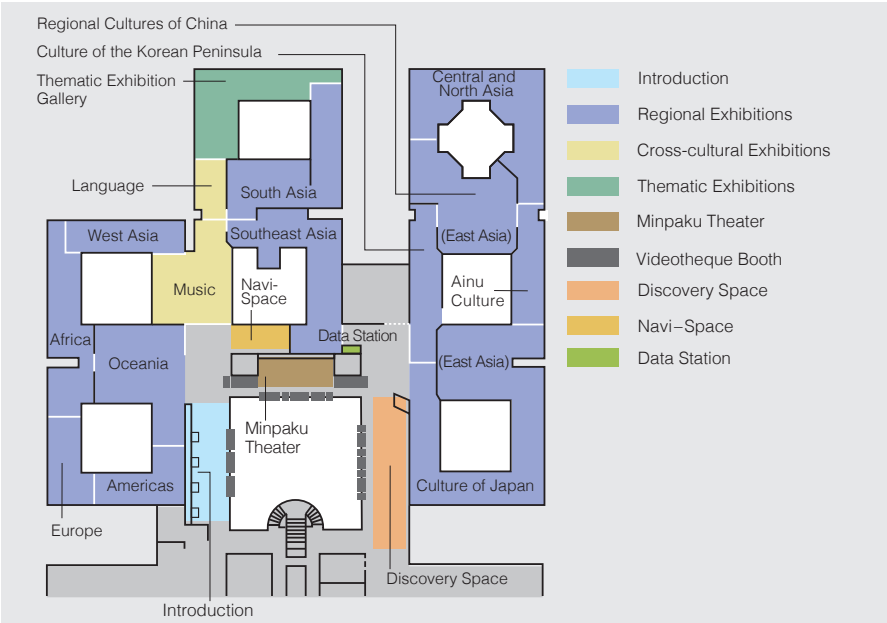
These Thematic Exhibition Galleries can also be used as a shared exhibition gallery to expedite displays of the latest research trends of universities and other institutions in Japan and overseas.

The Museum encourages the introduction of information devices into its exhibits.

One such device is the Videotheque. As the world’s first on-demand video library of its kind, it was developed by the Museum when it opened its doors to the public. Video programs provide visitors with glimpses of the living cultures of the world’s peoples and let them see how the artifacts shown in the Main Exhibition Hall are actually used.

The system allows visitors to select a video program from the Museum’s collection, which now contains 850 titles. In FY2022, the Minpaku Theater was established for visitors to become more immersed in the images. A booth exists to facilitate the visualization of dynamic videos for a large group of people on a large screen, along with booths allowing a small group of people to observe images comfortably on a large monitor. The second example of information devices held by the Museum is the Minpaku Digital Guide, which was developed in 1999 as the world’s first portable audiovisual device using videos and voices to describe exhibits. The Minpaku Digital Guide provides various types of information, such as how the items exhibited were used, in what locations they were used, and by what kind of people they were used. The Minpaku Digital Guide was renewed in 2020 as a system equipped with new functions such as guidance for museum facilities and a link with Videotheque. Now, the system allows visitors to watch videos describing the exhibits on smartphones while checking their locations on the explanatory hall map displayed in their hand. Linking to Videotheque by LinkRay (visible light communications) automatically introduces Videotheque programs related to exhibition materials for which the visitor has watched the commentary. These videos have been translated into multiple languages. Videotheque now provides 544 programs, out of the total of 850 programs, in nine different languages. The Digital Guide, produced in 2019, includes 327 programs that were made available in nine languages through machine translation of seven languages based on English subtitle data.

In the Discovery space, visitors can use the terminals to access and compare a wealth of information on artifacts currently on display. Related books and journals as well as Minpaku publications are also available.



Minpaku Digital Guide
This guide describes facilities and exhibits in the Exhibition Halls using the museum map. It shows videos and information related to the locations artifacts were found, how they were used, and by whom they were used. Explanations are currently available in nine languages, including Japanese, English, and Chinese.

Regional Exhibitions

The regional exhibitions focus on Oceania, the Americas, Europe, Africa, West Asia, South Asia, Southeast Asia, Central and North Asia, and East Asia. The figures appearing next to each exhibition space’s name indicate the exhibit area in square meters.

Oceania 660m²



Human Dispersal into Oceania **Living off the Sea** **Living on Islands**
Contact with the Outside World **Expressions of Indigenous Identity**

In Oceania, tens of thousands of islands, large and small, are scattered across the surface of the ocean. The islands are inhabited by peoples who grow root and tree crops and are highly skilled in the arts of seamanship and navigation. In the sections “Human dispersal into Oceania”, “Living off the Sea”, and “Living on Islands”, we explore the diverse techniques developed to survive in island environments with limited resources. We also examine how indigenous cultures have been affected by encounters with the outside world in the sections “Contact with the Outside World” and “Expressions of Indigenous Identity”.

The Americas 320m²



Encounter **Eating** **Clothing**
Prayer **Creativity**

The vast expanses of the Americas range from polar regions to tropical rain forests and encompass a huge diversity of natural environments. Peoples adapting to these environments developed distinctive lifeways. Then came conquest and colonization by European peoples, with foreign influences permeating everyday life. Here our focus is on clothing, diet and religion. While clarifying the relationship between their underlying diversity and historical influences, we also draw attention to traditional artists and craftmakers who creatively combine tradition with modern values in their works.

Europe 250m²



Agriculture and the Annual Cycle **Religions and Beliefs**
Industrialization **Europe in Transformation**

From the 16th to the 20th centuries, Europe was the center from which Christianity and modern institutions, technologies, and knowledge spread around the world. Now the tide has turned, and immigrants from all over the world are making themselves part of European society. Here we explore the interactions of tradition and religion, rationalization and industrialization, and immigration in the formation of modern Europe, focusing on the concept of “time”.

Africa 500m²



Excavating History **Urban Life** **Work** **Adornment**
Prayer

Africa, the birthplace of humanity, has gone through profound changes and has always been tied to the outside world. The diversity of cultures and languages that we see in the African continent today is the result of these changes. In this exhibit, we introduce the way in which people live in Africa today, focusing on four different aspects—‘urban life’, ‘work’, ‘adornment’ and ‘prayer’. We also look at the efforts people are making to rediscover their history. We hope that this exhibit fosters renewed understanding toward the people of Africa, who live in the same present as we do.

West Asia
310m²

Religion
Living in the Desert
The Palestinian
Diaspora
Coffee as
Global Culture
Sound Culture
and Pop Culture



The people of West Asia, or the Middle East, call their land in Arabic *mashriq*, ‘the land of the rising sun’. Historically, they have kept close ties to the *maghrib*, ‘the land of the setting sun’, that is, North Africa. These regions consist mainly of dry lands inhabited by nomadic peoples. At the same time, urban cultures flourished in large cities such as Baghdad and Cairo. Islam is the majority religion in West Asia, but this region is also the cradle of Judaism and Christianity. This gallery highlights religious practices, nomadic life, women’s dress, and music and dance to show how global change has reached the lives of people in West Asia.

Southeast Asia 730m²



Subsistence Everyday Life in a Village Urbanscapes
Entertainment and Recreation

Southeast Asia is encompassed by forests and seas. The climate is tropical to subtropical; people start work early in the morning, and return home and nap in the middle of the day when temperatures can approach 40°C. In the evenings and after squalls have passed, temperatures start to fall. People go out to shop or go back to work in their fields. In the cool of the evening they relax, head to outdoor stalls for meals with friends or family, or relax and enjoy traditional performing arts. The theme of this exhibit, which introduces a rich variety of ethnic cultures, is “A Day in the Life of Southeast Asia”.

South Asia 600m²



Religion—Tradition and Diversity Ecology and Subsistence
Urban Popular Culture Tradition and Trends in Textiles
South Asia on the Move

South Asia extends from the mountain ranges in the north, to the Arabian Sea in the west, and the Bay of Bengal in the east. In this region there is a vast range of natural environments inhabited by peoples with an enormous diversity of religions, cultures, and ways of life. Wisdom of coexistence developed over the centuries, and, despite rapid industrialization, is preserved to this day. This gallery exhibits a diverse array of religions, livelihoods and crafts, together with new forms of popular culture emerging primarily in urban settings, and the booming textile culture in the midst of globalization.

Central and North Asia 710m²



Living with Nature The Socialist Era Central Asia
Mongolia Siberia and the Arctic

Central and North Asia is an immense region occupying the northeast of the Eurasian continent. It has long been a crossroads for interactions linking east and west, north and south, where many diverse peoples have mingled. After undergoing socialist rule during the twentieth century, the region has shifted to market economies. Caught up in the wave of globalization, traditions are being reevaluated. This exhibit has three sections on “Central Asia”, “Mongolia”, and “Siberia and the Arctic”, along with two sections accentuating the key themes of “Living with Nature” and “The Socialist Era.”

East Asia Culture of the Korean Peninsula 330m²



Spiritual Worlds Housing Food Clothing
Recreation Knowledge

The inhabitants of the Korean peninsula developed their own distinctive culture under constant influence from other ethnic groups. Cultural elements adopted from Eastern Siberia in prehistoric times, and later from China, were reworked and domesticated to become distinctively Korean. The result is a culture with a level of integration rarely found elsewhere in the world. In modern times, Korea was colonized by Japan, then split in two after independence and rapidly modernized. In today’s world, Koreans are actively migrating to other parts of the world, and people of Korean descent can be found living outside Korea. Spiritual worlds, everyday life, recreation, and knowledge are the themes of this exhibit, which introduces the multilayered history and energetic character of this culture.

East Asia Ainu Culture 270m²



The Ainu People Kamuy and Nature Present and Future

The Ainu are an indigenous people who developed a culture adapted to the cold natural environment of the northern part of the Japanese archipelago, primarily in Hokkaido. Domination by the Tokugawa Shogunate during the Edo period and assimilation during the Meiji period led to discrimination against the Ainu and imposed hardships on them. In recent years, Japan’s government has acknowledged this history and been taking steps that show respect for the Ainu people. Here we introduce the evolving situation of the Ainu, who continue to honor their traditions and strive to create a new and distinct culture.

East Asia Regional Cultures of China 660m²



Subsistence Musical Instruments Zhuang Stilt House Costume
Crafts Taiwan Indigenous Peoples Religion and Writing
Chinese Overseas Transmission of Chinese Tradition

The Chinese landscape is immense and highly diverse, both in altitude and topography. Its variety of natural environments has fostered a wide range of ethnic cultures. Han Chinese account for over 90% of China’s population, and, while concentrated in the plains, are spread throughout the nation. Mainland China is also home to 55 minority peoples, who live for the most part in the highlands or grasslands in southwest, northwest, and northeast China. In Taiwan, indigenous groups speaking diverse Austronesian languages live alongside Han Chinese. Chinese overseas all over the world regard China as their ancestral homeland. This exhibition introduces a diverse range of Chinese ethnic life ways. Taking into account historical and local characteristics, the exhibition explores livelihoods, costume, musical instruments, dwellings, crafts, religion and writing, Han Chinese marriage ceremonies and ancestor worship, Taiwan indigenous peoples, and Chinese overseas.

East Asia Culture of Japan 1,460m²



Ritual, Festivals and Performing Arts Everyday Life
Okinawan Lives Multiethnic Japan

Stretching from Hokkaido in the north to Okinawa in the south, the long, narrow Japanese archipelago is blessed with a rich variety of ecological niches. The combination of diverse natural environments and contacts with neighboring cultures has resulted in formation of distinct local traditions. In addition, many people from other countries have also come to live in Japan in recent years, adding new elements to the mix. In this section we approach Japanese culture from four perspectives: Festivals and Performing Arts, Everyday Life, Okinawan Lives, and Multiethnic Japan.

Cross-cultural Exhibitions

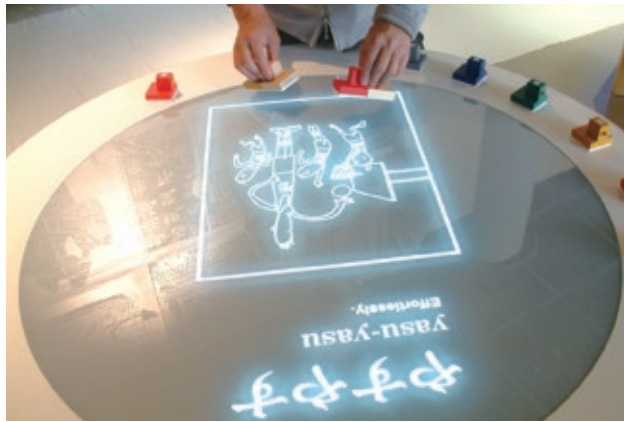
Music 550m²



Drums: A Spirited Sound Gongs: The Sound of Power
Oboe: Performing Sounds Guitar: Sounds in History

Through sounds, we humans convey messages, express emotions, know our surroundings, imagine far away times and places, inspire or console ourselves, and communicate with gods and spirits. With examples from all over the world, this exhibition shows how sounds and music are deeply related to our identity as humans.

Language 170m²



Components of Language
Language Diversity
Writing Systems of the World

Whenever people meet and interact, the need for communication arises and pieces of information are continuously exchanged through various means. Among these, language, shared exclusively by human beings, is a highly developed tool which enables us to express emotional states, describe our deepest thoughts, and to pass intellectual knowledge beyond space and over generations. Language is our irreplaceable heritage, reflecting our diverse cultures and serving as a window for understanding people's cognitive and creative abilities.

Information Zone

Introduction



The exhibits in the Introduction section are designed to enable visitors to experience directly how anthropologists and ethnologists think and how Minpaku exhibits could be explored. Here is where your global journey starts.

Videotheque/Minpaku Theater



Visitors can watch videos about ceremonies, performing arts, and lifestyles of people around the world, or about introducing the background of exhibition materials.
According to their purposes, they can select videos edited in approximately 15 minutes, multimedia programs, and valuable research videos(visual ethnography), that researchers have collected through fieldwork. In FY2022 the Minpaku Theater, was established with a large screen and monitors, to allow visitors to be immersed in the images. (There were 36,657 requests for Videotheque programs in FY2023.)

Discovery Space



Research Desk Deepen Your Knowledge
Voices from the Field Connect to the World
Touch the World Widen Your Perspectives

In the Discovery Space, visitors may search for more information about exhibits at the Research Desk. Materials related to Minpaku researchers' projects can be found at Voices from the Field. Touch the World provides an opportunity to handle as well as see exhibit materials, to gain a deeper understanding of them. Visitors are invited to learn more about the artifacts on exhibit, to satisfy their curiosity about what Minpaku researchers are studying, and to experience artifacts directly.

Special Exhibitions

“Arte Popular”: The Creative and Critical Power of Latin Americans”

March 9 – May 30, 2023

The National Museum of Ethnology
Project leader: SUZUKI Motoi

Brimming with colors and bursting with forms, this exhibition showcases Latin American popular arts. In Latin America, the sophisticated handicrafts created by the people of the region are known as popular art (Arte Popular in Spanish). The exhibition features approximately 400 pieces of popular arts, primarily from the National Museum of Ethnology collection. The exhibits range from artifacts of ancient civilizations to works from contemporary art collectives, extending from Mexico in the north to Argentina in the south.



“Divine Affection: Enchanting Images of Hindu Deities”

September 14 – December 5, 2023

The National Museum of Ethnology
Project leader: MIO Minoru

Numerous Hindu deities appear through various things such as stone, metal, pottery, paintings, tiles, embroidery, and even picture books, stamps, etc. These images have been important media through which people interact with deities using their five senses. At the core of this interaction with images lies affection for deities. In daily worship, people actively engage with the images by bathing and adorning them with affection, trying to entertain them and have their wishes heard. The exhibition focused on various forms of interaction between deities and human beings by exhibiting around 650 items, including those made outside South Asia to showcase the global circulation of religious objects. It was designed to allow visitors to experience interaction with images through various senses, not just visually but also through auditory and tactile experiences.



Thematic Exhibition

“Screen Prints of Canada’s Northwest Coast Peoples”

September 7 – December 12, 2023

The National Museum of Ethnology
Project leader: KISHIGAMI Nobuhiro

Along the Pacific Coast of Canada, indigenous peoples such as the Haida, Kwakwaka'wakw, and Coast Salish thrive. Collectively known as the Northwest Coast Peoples, they are celebrated for their creation of totem poles—large, intricately carved wooden structures—and for performing the Potlatch Ceremony. Efforts to restore and creatively continue their traditional culture began around 1960 and continue to this day. This movement was driven by the emergence of screen printing, among other activities. This exhibition features unique screen prints created by the Northwest Coast Peoples, highlighting the relationship between social changes and transformations in their printmaking.



Collection Exhibition

“The Hunter's View of the Earth”

July 6 – August 8, 2023
The National Museum of Ethnology
Project leader: IKEYA Kazunobu

In prehistoric times, the human race was able to spread to every corner of the Earth, where people survived in togetherness by sharing game that was largely obtained by hunting. This exhibition is aimed at considering the future of the Earth through the lens of human hunting practices, particularly by showcasing the tools used by hunters worldwide, hunting scenes, and the methods they followed in distributing game. The exhibition primarily features materials collected by IKEYA Kazunobu, the exhibition planner, who apprenticed with hunters in tundra, temperate, and tropical forests, deserts, and savannas during nearly 40 years of study.



Cooperative Exhibition

“Slash-and-burn culture in the Kyushu Mountains”

October 7 – December 3, 2023
HISTORIA TERRACE ITSUKIDANI
Project leader: IKEYA Kazunobu

The Kyushu Mountains, located in the center of Kyushu, consist of a steep range of peaks with elevations of around 1,500 meters above sea level. People who have inhabited this region from prehistoric times to the present have developed a unique “mountain culture,” including practices such as slash-and-burn agriculture. This exhibition introduced not only slash-and-burn practices, but also various other forms of livelihood and mountain worship rituals followed by the people in the Kyushu Mountains. By depicting the lives and culture of the mountain people who once lived in Japan in large numbers, the exhibition sheds light on modern society, where activities predominantly revolve around cities in flat areas, with considerations regarding their future.



Traveling Exhibitions

“REGNUM IMAGINARIUM: Realm of the Marvelous and Uncanny”

March 11 – May 14, 2023
Fukuoka City Museum
Project leader: YAMANAKA Yuriko

In Europe and the Middle East, tales of “the marvelous”—giants, mermaids, and unicorns and other strange beings and phenomena from the edge of the known world—became an important component in the encyclopedic compilations of knowledge about the human and material world. In East Asia, “the uncanny”—anomalous, out-of-the-ordinary beings and incidents—were considered as signs of disturbances in the cosmic order. How have these strange things, which deviate from an instinctive understanding of nature, been recognized, explained, and at times, used as an inspiration for creative works? This exhibition displayed approximately 350 pieces, including paintings, books, sculptures, and ritual implements, from the collection of the National Museum of Ethnology and from various locations across Kyushu, featuring mermaids, dragons, kappa, tengu, and giants, all creatures believed to exist in a brink of this world. It invited visitors to enjoy a journey through the labyrinth of human imagination.



Photographer: INAGAKI Satoshi

“UNIVERSAL MUSEUM: Exploring the New Field of Tactile Sensation”

April 1 – May 7, 2023
The OHK Okayama Broadcasting Station at KURUN HALL
Project leader: HIROSE Koujirou

Initially presented in the fall of 2021 at the National Museum of Ethnology, the Special Exhibition “UNIVERSAL MUSEUM: Exploring the New Field of Tactile Sensation” was held in Okayama for the first time as a traveling exhibition. By encouraging visitors to interact physically with various works and to use their sense of touch (or senses other than visual perception), the exhibition raised awareness of sensory diversity. This universal exhibition, which challenged the traditional approach of prioritizing and overemphasizing visual sensation, garnered international attention beyond the usual frameworks of accessibility for individuals with disabilities and support for the vulnerable. Through this exhibition, we disseminated the limitless possibilities of “touching.”



Photographer: KUWATA Chiaki

Exhibitions in 2024

Special Exhibitions

“Masks in the Performing Arts and Festivals of Japan”
March 28 – June 11, 2024
The National Museum of Ethnology
Project leader: SASAHARA Ryoji

“THE WORLD OF POET-SINGERS”
September 19 – December 10, 2024
The National Museum of Ethnology
Project leader: KAWASE Itsushi

Thematic Exhibitions

“Conveying the realities of the Minamata disease”
March 14 – June 18, 2024
The National Museum of Ethnology
Project leader: HIRAI Kyonosuke

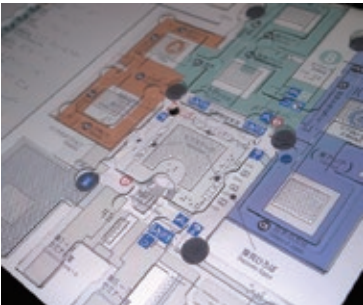
“Hakka and Japan: Another History of East Asian Relations Created by Chinese Overseas”
September 5 – December 3, 2024
The National Museum of Ethnology
Project leader: NARA Masashi

Traveling Exhibitions

“UNIVERSAL MUSEUM: Exploring the New Field of Tactile Sensation”
July 6 – September 16, 2024
Nogata Tanio Art Museum
Project leader: HIROSE Koujirou
“REGNUM IMAGINARIUM: Realm of the Marvelous and Uncanny”
September 14 – November 17, 2024
National Ainu Museum
Project leader: YAMANAKA Yuriko

The Digital Tactile Map [National Museum of Ethnology Touch Panel Guide]

The digital tactile map, National Museum of Ethnology Touch Panel Guide, is an interactive tactile map that makes information in the museum accessible to people, including for those with visual disability. The finger guide placed on the touch panel display and a voice guide are linked to provide tactile and audio information about the person’s location in the museum and about the exhibitions. Currently, three of these touch panel guides are placed in the exhibition halls of Minpaku. This digital tactile map was developed in Minpaku’s Cultural Resource Projects. Members who led the design development of this project were Professor HIRAI Yasuyuki of the Graduate School of Design at Kyushu University and Associate Professor FUMOTO Koichiro of the Faculty of Global and Science Studies, Yamaguchi University.



The Digital Tactile Map was Awarded Various Prizes [National Museum of Ethnology Touch Panel Guide]

Data Station

Go on an exclusive virtual museum tour of past special exhibitions and permanent exhibitions captured as a panorama movie, and view a database of artifacts in the Museum's collection.



Awards

“Japan Typography Annual 2024” Prize Winner
Organizer: Japan Typography Association
Award given to: Special Exhibitions “*Homō loquēns* ‘talking human’: Wonders of Language and Languages” Venue Design
Award given to: National Museum of Ethnology, SATO Daisuke (Art Director, Designer)

“Japan Typography Annual 2024” Prize Winning
Organizer: Japan Typography Association
Award given to: Traveling Exhibition “REGNUM IMAGINARIUM: Realm of the Marvelous and Uncanny”(Fukuoka City Museum) Front Page Design of the Leaflet
Award given to: Fukuoka City Museum, SATO Daisuke (Designer)

JICA Knowledge Co-Creation Program: “Museums and Community Development”

This course, fully commissioned by the Japan International Cooperation Agency (JICA), provides specialists from developing countries with lectures and practice sessions to gain a thorough understanding of the museum’s activities, such as collection, organization, preservation, display, and education. The goal is to foster human resources capable of contributing to cultural promotion through museums in their respective countries.

In FY2023, 10 program participants from seven countries and regions (Albania, Ecuador, Egypt, Iraq, Papua New Guinea, Peru, and Zambia) were accepted for training from September 29, 2023 to December 12, 2023. Besides implementing training at Minpaku, we also delivered a sequential program at the Lake Biwa Museum, conducted individual training at the Gangoji Institute for Research of Cultural Property, and organized study tours to the Tokyo National Museum, the National Museum of Nature and Science, IntermediaTheque, and the Hiroshima Peace Memorial Museum. Furthermore, on November 3, 2023, we hosted the Public Forum “Museums in the World 2023,” an open forum where all trainees reported on and discussed the activities and challenges faced by museums in their respective countries. The forum was held at Minpaku and attended by 80 people.

While the name of the course and its format have evolved, the goal remains unchanged: to promote international interaction and exchange with museums worldwide. During the 30-year history of the course, 296 participants from 65 countries and regions have been accepted. This program will continue to contribute to the expansion of international museology networks.



Public Forum



Experience wearing traditional Ainu clothing



Lecture at Minpaku



Study trip to Tokyo



Sequential Program (Digital Documentation)



Closing Ceremony

Minpaku Fellows

This is a network of international researchers who have worked with or for the Museum in the past, and foreign and domestic research institutions with close ties to the Museum. In order to promote awareness and improve information exchange, our English Newsletter (*MINPAKU Anthropology Newsletter*) is published regularly.

There are approximately 1,000 members in the Minpaku Fellows program.

Minpaku Fellows Breakdown by Area as of March 31, 2024

Regions	Number of Fellows
Asia, Middle East, Oceania	597
Europe	154
North America, Latin America and the Caribbean	189
Africa	80
Total	1,020

Symposium

In 2023, the following symposium was held under the auspices of the Grand Egyptian Museum, the Japan International Cooperation Agency (JICA), and Minpaku.

Symposium
“The Grand Egyptian Museum: Preserving the Treasures of the Pharaohs 2023”

Date August 5, 2023
Venue Minpaku Auditorium
Attendance 347



The Museum has been working to build networks to ensure the more systematic and viable use of cultural resources through academic collaboration with museums and universities, both in Japan and overseas. The Museum is also promoting various projects and activities that benefit local communities and international society, in cooperation with many organizations.

Min-pack

In order to contribute to a better understanding of our research, the Museum has developed a learning-kit for children, called Min-pack. It is lent to schools and other educational institutions. Min-pack is a learning kit carried in a suitcase that contains a variety of materials including clothes, musical instruments, and everyday commodities, of the world’s countries and regions, with children’s learning aids. 26 packs and 15 types are now available.

Lending period: April 10, 2023 – March 13, 2024
FY2023 Number of loans: 190 Total number of users: 24,319

- Living in the Extreme North: Anoraks and Duffle Coats from the Inuit in Canada
- Treasure Box of the Andes: The Festivals and Life of the Peruvian Southern Highlands
- Costumes in Java: Religion and Tradition
- Indian Costumes: Saris and Kurtas
- The Arabian Nights
- Islam and Life of the Arab World
- Seoul Style: A Day in the Life of Children in Seoul
- Seoul Children After-school
- Ainu Culture Encounter
- Expedition to the Steppes of Mongolia
- The 2011 Umesao Tadao Exhibition: Tools of Knowledge Production (This uses artifacts from the Special Exhibition “Umesao Tadao” held in 2011.)
- Muslims around the World: Daily Prayers
- Muslims around the World: Contemporary Life
- Ethiopian Coffee Ceremony
- Wearing Ethiopia: the Traditional Clothing of Amhara People



Min-pack
“Expedition to the Steppes of Mongolia”



Min-pack
“Wearing Ethiopia: the Traditional Clothing of Amhara People”

Workshops

Workshops are organized to introduce the culture of the world through hands-on experiences (crafts) and to share research outcomes of the museum researchers with society.

Date	Workshop	Lecturer
April 8, 2023 May 3, 2023	Workshop Related Special Exhibition “Mola: Let’s make the art of Guna indigenous people by layering coloured papers”	SUZUKI Motoi
July 21, 2023	Kids Workshop for Summer Holiday “Fieldwork Experience Look, Feel, and Paint Indigenous Australians Art”	HIRANO Chikako
September 24, 2023	Workshop Related Special Exhibition “Let’s sing Hindu religious songs, the ‘Bhajan’”	MIO Minoru PANDIT, Meeta (Classical Hindustani Vocalist, Assistant Professor, Somaiya Vidyavihar University, Mumbai) MUSHIGA Tomoka (Assistant Professor, Kyoto University HAKUBI Center) HAYASHI Leo (Tabla Player)
October 9, 2023	Workshop Related Special Exhibition “Experience of Indian daily religious practice through drawing ‘Kolam’ (auspicious floor painting)”	MIO Minoru NAGATA Kaoru (Professor, Sojo University) YASUMORI Daiki (Part-time Teacher, Luther Junior and Senior High School)
October 28, 2023	Workshop Related Thematic Exhibition “Let’s make a totem pole with papercraft”	KISHIGAMI Nobuhiro
November 25, 2023	Workshop Related Thematic Exhibition “Let’s take on the challenge of making a screen print of Canada’s Northwest Coast”	KISHIGAMI Nobuhiro
December 25, 2023 January 6–7, 2024	Year-end and New Year Exhibition Event “Happy RYU Year! at Minpaku”	Information Planning Section
March 30, 2024	Workshop Related Thematic Exhibition “Feel the Sea of Minamata: Storyteller Lecture and Sea Glass Experience”	HIRAI Kyonosuke YOSHINAGA Rimiko (Representative Director, General Incorporated Association For-By-With Minamata) YOSHINAGA Toshio (Director, General Incorporated Association For-By-With Minamata)



“Mola: Let’s make the art of Guna indigenous people by layering coloured papers”



“Fieldwork Experience Look, Feel, and Paint Indigenous Australians Art”



“Experience of Indian daily religious practice through drawing ‘Kolam’ (auspicious floor painting)”



“Let’s take on the challenge of making a screen print of Canada’s Northwest Coast”

The project for building up partnership between the museum and society

This project is aimed at enhancing museum–society cooperative activities at the Museum by improving the existing programs, conducting research and developing new ones. In May 2023, we held the third online symposium on the theme of child education in the dissemination program, titled “Museum and Children,” and published the related report in both booklet and e-book formats. The “Activity Cards” and “Pamphlet for Children,” developed in 2022, along with the social cooperation activities that used these materials, were acknowledged by being conferred the 17th KIDS DESIGN AWARD in August 2023. The award recognized them as “The Project of Developing and Utilizing Viewing Support Tools for Children at Museums that Cultivate Free Thinking and Thinking Abilities.”



Conducting *Kamuynomi* and Craftmanship Training with the Ainu Association of Hokkaido

The National Museum of Ethnology is carrying out two projects under an agreement with the Ainu Association of Hokkaido. One is holding a *kamuynomi* rite. *Kamuynomi* is an Ainu word meaning ‘prayer to the spirit-deities.’ Through holding the *kamuynomi* rite, the Museum aspires to ensure the proper storage of its Ainu collection and assist in the handing down of this traditional rite to future generations. In the past, this rite was performed privately at the Museum by the late KAYANO Shigeru acting as master of ceremonies. Since FY2007, regional members of the Ainu Association of Hokkaido have given public performances of traditional Ainu dance together with the *kamuynomi* rite. In FY2023, it was held in cooperation with the Obihiro Kamuitou-upopo Preservation Society.

The second project is the reception of traditional craftspeople dispatched by the Ainu Association of Hokkaido as visiting researchers. This project aims to help the Museum to improve its academic research about, and use of, its collection related to Ainu culture, and promote the culture of the Ainu people. In FY2023, 1 researcher was accepted into this program.



The *Kamuynomi* Rite (FY2023)

Music Day at Minpaku

World Music Day, a festival which began in France to celebrate the summer solstice with a musical performance, was introduced in Japan in 2002. On this day, various musical events are held nationwide. Since 2003, the National Museum of Ethnology has supported this event by providing a venue for music enthusiasts to perform. On Sunday, June 11, 2023, a total of 12 individuals and groups performed various music and dances from around the world at the National Museum of Ethnology Auditorium.



Museum-School Partnership Program

To introduce tools that facilitate preparation and learning, before and after using Minpaku as a field trip or an excursion, we provide “Prior Visit Guidance” twice a year in spring and autumn at the Museum, promoting the use of museums in lessons. In 2023, 111 individuals from 36 groups participated. We also offer junior high school students the opportunity to participate in our “Work Experience Program,” by accepting seven individuals from three schools.

Volunteer Activities

Minpaku Museum Partners (MMP) is a group of volunteers established in September 2004, to assist the Museum in the planning and implementation of its activities.

MMP is promoting a widely various range of activities in cooperation with the Museum, such as “Main Exhibition Hall Guidance for Visually-Impaired Persons” (a program to support them to experience the exhibitions in the hall), “Wakuwaku Taiken at Minpaku” (a hands-on tour mainly for elementary school children), and craft workshops for general visitors. MMP also actively involves itself in workshop festivals and volunteer exchange programs outside the museum to deepen the relationship with other museums and facilities.



MMP Workshop “Let’s Make Memories in The Merry Cemetery: 2023”

Performance “West African Story Time”

Wakuwaku Taiken at Minpaku

Main Exhibition Hall Guidance for Visually-Impaired Persons

Experiencing Braille at the Workshop

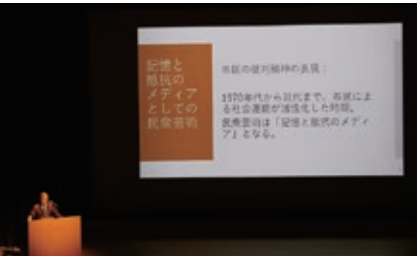
Minpaku Seminars

On the third Saturday of every month, the Museum’s academic staff and others give lectures in plain language to the general public on the newest research findings.

FY2023 Total Attendance: 1,579

□ indicates seminars associated with special exhibitions ○ indicates seminars associated with thematic exhibitions

No.	Date	Lecturer	Title
□ 532	April 15, 2023	SUZUKI Motoi SAKAI Tomoko (Associate Professor, KYOTO UNIVERSITY) HOSOYA Hiromi (Professor, SEIKEI UNIVERSITY) YAMAKOSHI Hidetsugu (Associate Professor, TSURU UNIVERSITY)	“Arte Popular” as a Medium of Memory and Resistance
533	May 20, 2023	MARUKAWA Yuzo	Cultural Heritage Online and it’s Brand New Service “Time Machine Navi”
534	June 17, 2023	NIWA Norio	One of the Earliest Japanese Exploration of Galapagos Islands
535	July 15, 2023	MIYAMAE Chisako	Fieldwork for Computer Science
536	August 19, 2023	KURODA Kenji	Miracles of the Martyrs: Deads and Their Families in Contemporary Iran
537	September 16, 2023	KASHINAGA Masao	Myths of the Tai Dam in Vietnam
□ 538	October 21, 2023	MIO Minoru	Deities in Everyday Lives: From the Context of Contemporary Hindu Lives in India
○ 539	November 18, 2023	KISHIGAMI Nobuhiro	Indigenous Art of North America’s Northwest Coast Peoples: With a Focus on Screen Prints
540	December 16, 2023	AISHIMA Hatsuki	“Be Water, My Friend”: Embodied Knowledge in the Age of Mass Mediation
541	January 20, 2024	SONODA Naoko	Behind the Scenes at the Museum: Considering the Preservation of Collection
542	February 17, 2024	IKEYA Kazunobu	The Earth and Civilization: Perspectives from the History of Homo Sapiens
○ 543	March 16, 2024	NAGANO Michi (Minamata Disease Center Soshisha) HIRAI Kyonosuke	Conveying the Realities of the Minamata Disease



No.532 “Arte Popular” as a Medium of Memory and Resistance



No.538 Deities in Everyday Lives: From the Context of Contemporary Hindu Lives in India



No.543 Conveying the Realities of the Minamata Disease

Minpaku Weekend Salon: A Chat with a Researcher

To understand our research better, this event provides an opportunity for the public to talk directly with research institute staff in the Museum’s exhibition hall. The Minpaku Weekend Salon was launched in FY2007 as part of the Museum’s 30th Anniversary project. The Salon was held in a Minpaku seminar room in 2022 to prevent the spread of COVID-19. However, since January 2023, it has been held at the Thematic Exhibition Area and the Special Exhibition Hall, in addition to being held in Navi-Space. Continuing from last year, it was held 26 times on Sundays, with a total of 1,236 participants.

Special Lectures and Performances

FY2023 Total Attendance: 673

Performing arts of the world’s peoples are staged, with the aim of deepening understanding of cultural anthropology and ethnology among the public.

Folk songs of the Peruvian Andes

Date April 22, 2023
Lecturer SUZUKI Motoi
Commentator HOSOYA Hiromi (Professor, Seikei University)
Performers SASAKUBO Shin (Guitarist)
OSNO, Irma (Singer of Peruvian Andean music)
Attendance 347

Bhajan: Devotional Songs for Hindu Deities

Date September 23, 2023
Lecturers MIO Minoru
MUSHIGA Tomoka (Assistant Professor, Kyoto University HAKUBI Center)
TANAKA Takako (Professor, Kyoto University of Education)
Commentator PANDIT, Meeta (Classical Hindustani Vocalist, Assistant Professor, Somaiya Vidyavihar University, Mumbai)
Performers NAKAGAWA Yuji (Sarangi player)
HAYASHI Leo (Tabla player)
Attendance 326



Minpaku Film Shows

Valuable films on cultural anthropology and ethnology, hardly available in public, are shown with commentary by researcher.

FY2023 Total Attendance: 1,426 Online (Maximum number of simultaneous connections): 189

Date	Lecturer	Title	Attendance
July 29, 2023	MIYAMAE Chisako ABE A. Reiko (Professor, The University of Oslo) Eirik SVENSSON (Movie Director)	HARAJUKU	195
November 3, 2023	MIO Minoru	Hotel Salvation	284
Total			479



Minpaku Visual Ethnography Theater

Date	Lecturer	Title	Attendance	Online: Maximum number of simultaneous connections
January 13, 2024	KURODA Kenji OMORI Yasuhiro	A Shamanic Medium of Tsugaru	40	36
January 21, 2024	KURODA Kenji NISHIO Tetsuo HORIUCHI Masaki	Andalusian Music Today: Festival in Chefchaouen, Morocco	43	59
February 10, 2024	KURODA Kenji FUKUOKA Shota	The Rod Puppet Theater in Cirebon, Java	40	34
February 18, 2024	KURODA Kenji YOSHIDA Kenji	Mask Making: Nō Mask Master of Kyoto	32	60
Total			155	189



Minpaku World Cinema

By selecting appropriate movies for theme “Thought on The Future of Humanity from Films”, the Museum offers a series of film showings accompanied by researcher commentary.

No.	Date	Lecturer	Title	Attendance
54	May 27, 2023	SUGASE Akiko SUZUKI Motoi	La Llorona	250
55	September 30, 2023	SUGASE Akiko MATSUBARA Masatake (Professor Emeritus, National Museum of Ethnology)	The Last Birds of Passage	275
56	January 27, 2024	SUGASE Akiko CHE Sohee	House of Hummingbird	267
Total				792



Campus Members

This membership program is aimed at providing opportunities to learn about cultural anthropology and ethnology through cooperation between the National Museum of Ethnology and educational institutions such as universities.

Member schools and corporations receive privileges such as participation in events, including exhibition tours, special lectures and performances, and movies free of charge and discounts at the Museum Shop.

Member schools in 2023

Osaka University, Kyoto University, Senri Kinran University, Tsukamoto Gakuin Institute (Osaka University of Arts, Osaka University of Arts Junior College, Osaka College of Art), Doshisha University (Faculty of Global and Regional Studies, Faculty of Culture and Information Science, Graduate School of Culture and Information Science), The Ritsumeikan Trust, Otemon Gakuin University (Faculty of Letters, Faculty of International Studies, Faculty of International Liberal Arts)



Data Collection

History

1935	A plan to establish an ethnological museum of Japan as an incorporated foundation is developed under the leadership of SHIBUSAWA Keizo and SHIRATORI Kurakichi.
1964	The Japanese Society of Ethnology, the Anthropological Society of Nippon, the Japanese Archaeological Association, the Folklore Society of Japan, and the Japanese Association of Ethnology jointly submit to the Minister of Education and other relevant authorities a request to establish a national ethnological research museum.
1972	A research council (chaired by KUWAHARA Takeo) conducts a feasibility study on the establishment of a National Ethnological Research Museum. A basic concept plan for the museum is submitted to the Minister of Education.
1973	A preparatory council for the establishment of a National Ethnological Research Museum (tentative name) and a preparation office are set up.
1974	The National Museum of Ethnology is founded under the “Law to amend part of the National School Establishment Law” (No. 81, 1974), with an Administration Department, an Information and Documentation Center, and five Research Departments. Collecting artifacts from overseas was started in Papua New Guinea.
1975	A collection of folklore reference materials (28,432 items) owned by the former Ministry of Education Archive were transferred from the National Institute of Japanese Literature.
1977	The Museum buildings (28,778m ²) are completed and the surrounding area is landscaped. An opening ceremony is held. Exhibitions on Oceania, the Americas, Europe, Africa, West Asia, Music, Language, Southeast Asia, and East Asia (Japanese Culture), as well as the Videotheque are opened to the public.
1978	Long-term and carefully organized “Special Projects” are started as key components of ethnological research.
1979	The fourth Exhibition Hall (1,272m ²), which accommodates an additional exhibition on East Asia (Japanese Culture), is completed and opened to the public. Exhibitions on Central and North Asia, and East Asia (Ainu Culture) are opened to the public.
1981	The Auditorium (3,704m ²) is completed.
1983	The eighth Exhibition Hall and other facilities (4,816m ²) are completed. The exhibition on East Asia (Cultures of the Korean Peninsula and Regional Cultures of China) is opened to the public.
1984	The 10th anniversary of the Museum’s founding is celebrated. “A Ten-Year History of the National Museum of Ethnology” is published.
1987	The 10th anniversary of the Museum’s opening to the public is celebrated.
1989	The School of Cultural and Social Studies (with the Department of Regional Studies and the Department of Comparative Studies) of the Graduate University for Advanced Studies is established within the Museum. (It has been reorganized as Anthropological Studies of Graduate Institute for Advanced Studies since 2023AY.) The Special Exhibition Hall and the library stacks (5,292m ²) are completed. The first special exhibition, “The Great Andes Civilization: Inca, the Reviving Empire of the Sun” is organized to celebrate the completion of the Special Exhibition Hall.
1993	The main Museum building is expanded and a joint research facility (891m ²) is completed.
1994	The 20th anniversary of the Museum’s founding is celebrated. The Japan Center for Area Studies is established. (Discontinued in FY2005)
1995	Owing to damage caused by the Hanshin-Awaji Great Earthquake, the entire collection is closed for 45 days. (Earthquake-proof reinforced construction was retrofitted between 2002 and 2003) The Center of Excellence (COE) program is established: “Pioneering Research for the Development of New Ethnological Studies Using Multimedia in the Global Era.” (Concluded at the end of FY1999)
1996	The seventh Exhibition Hall (6,439m ²) is completed. Exhibitions on Language and Southeast Asia are renovated. An audio-visual gallery, the Materiatheque, and the exhibition on South Asia are opened to the public.
1997	The 20th anniversary of the Museum’s opening to the public is celebrated.
1998	Following the enactment of the Ministerial Ordinance to revise part of the administrative rules for the Inter-University Research Institute (Ordinance of the Ministry of Education No. 24 of 1998), the five research departments are reorganized into four research departments and one research facility.
1999	The Minpaku “Digital Guide and Study Area” are completed and opened to the public.
2000	A renovated exhibition on the Cultures of the Korean Peninsula is opened. Partial renovation of the Museum exhibitions continued until 2003.
2004	As authorized by the National University Corporation Act (Act No.112,2003), the National Institutes for the Humanities, as part of the Inter-University Research Institute, is established. The former system of 4 research departments and 1 research center is reorganized into a system with 3 research departments and 2 centers. To facilitate joint research, screening by the Joint Research Committee, whose members include representatives from the research community, is established and the scope of the call for joint research applications expanded. Editing of a book entitled A Thirty-Year History of the National Museum of Ethnology is one of the earliest commemorative events started in preparation for the 30th anniversary of the Museum’s founding. (The book is published in March 2006.)
2006	The Minpaku Collections Help Desk opens.
2007	The 30th anniversary of the Museum’s opening to the public is celebrated.
2008	A collaborative agreement is signed with the Japanese Society of Cultural Anthropology.
2009	After renovation, the Africa and West Asia galleries are re-opened to the public.
2010	After renovation, the Music and Language galleries are re-opened to the public. New systems are consolidated including the establishment of the Center for International Academic Exchange.
2011	After renovation, the Oceania and Americas galleries are re-opened to the public.
2012	After renovation, the Europe gallery and Information Zone are re-opened to the public.
2013	After renovation, the East Asia–Culture of Japan gallery is re-opened to the public. Consolidation of new systems, including the Audit Office and Umesao Archives.
2014	After renovation, the East Asia–Culture of the Korean Peninsula, Regional Cultures of China, and Culture of Japan galleries are re-opened to the public.
2015	After renovation, the South Asia and the Southeast Asia galleries are re-open to the public.
2016	After renovation, the Central and North Asia, and the East Asia–Ainu Culture galleries are re-opened to the public.
2017	Renovation of the Main Exhibitions was completed,anniversary ceremony is celebrated. The former system of 3 research departments and 2 research centers is reorganized into a system with 4 research departments and 1 research center. The 40th anniversary of the Museum’s opening to the public is celebrated. Joint-Use Facilities for Scientific Research is established.
2018	The exhibition hall was closed for 66 days because of damage caused by the Osaka northern district earthquake. The library was closed for 49 days.
2020	The National Museum of Ethnology was closed for 111 days because of the novel coronavirus disease (COVID-19) pandemic.
2021	The National Museum of Ethnology was closed for 59 days because of the novel coronavirus disease (COVID-19) pandemic.

Former Directors-Generalas of April 1, 2024

First Director-General June 1974–March 1993 UMESAO Tadao* Ethnology, Comparative Study of Civilizations	Second Director-General April 1993–March 1997 SASAKI Komei* History of Agriculture in East and South Asia	Third Director-General April 1997–March 2003 ISHIGE Naomichi Cultural Anthropology	Fourth Director-General April 2003–March 2009 MATSUZONO Makio Social Anthropology	Fifth Director-General April 2009–March 2017 SUDO Ken’ichi Social Anthropology
--	--	---	--	---

Professors Emeriti as of April 1, 2024

1984– SOFUE Takao* Psychological Anthropology	2000– SHIMIZU Akitoshi Comparative Study of Families, Study of Oceania	2006– NOMURA Masaichi* Nonverbal Communication, Ethnology of Mediterranean Europe	2017– SUDO Ken’ichi Social Anthropology
1985– IWATA Keiji* Cultural Anthropology	2001– HATA Nobuyuki Economic Anthropology, Anthropology of Africa	2007– OMORI Yasuhiro Ethnology, Visual Anthropology	2017– TAKEZAWA Shoichiro African History, History of Anthropological Thought; West Africa
1986– KATO Kyuzo* Ethnic History in North and Central Asia	2001– KURODA Etsuko Theory of Ethnicity and Social Culture, Anthropology of Central America	2007– YAMAMOTO Norio Ethnobotany, Ethnology, the Andes, the Himalayas	2017– TSUKADA Shigeyuki Ethnohistory; Southern China
1988– ITOH Mikiharu* Anthropology of Religion	2001– SAKIYAMA Osamu Linguistic Anthropology, Oceanic Linguistics	2009– MATSUZONO Makio Social Anthropology	2018– INTOH Michiko Prehistory of Oceania; Oceania, Island Southeast Asia
1988– NAKAMURA Shunkichi* Study of Ethnic Technologies and Tools	2001– SAKIYAMA Osamu Linguistic Anthropology, Oceanic Linguistics	2010– MATSUYAMA Toshio Ethnology of Contemporary Australian Aboriginal Society	2018– YOKOYAMA Hiroko Cultural Anthropology, Chinese Society and Culture
1989– KIMISHIMA Hisako* Chinese Folklore	2002– KOYAMA Shuzo* Ethnoarchaeology	2011– NAGANO Yasuhiko Historical Linguistics, Lexical Semantics; Tibeto-Burman Area	2020– TERADA Yoshitaka* Ethnomusicology, Study of South India
1990– WADA Yuiti* Linguistic Anthropology	2002– MORITA Tsuneyuki Conservation Science, Ethno-technology	2012– AKIMICHI Tomoya Maritime Anthropology, Ecological Anthropology; Oceania,Southeast Asia, Japan	2021– DEGUCHI Masayuki Third Sector Research, Civil Society Studies
1991– TARUMI Minoru* Anthropology in Spatial Domains	2003– ISHIGE Naomichi Cultural Anthropology	2012– NAKAMAKI Hirochika Japanese Religion, Brazilian Company Culture; Japan	2022– HAYASHI Isao Social Structure, Cosmology, Risk and Disaster; Melanesia, Polynesia, Japan
1992– SUGIMOTO Hisatsugu* Cultural Geography, Cultural Anthropology	2003– KURITA Yasuyuki Museum Anthropology, Study of Bhutan	2014– KOBAYASHI Shigeki Museum Science, Cultural Anthropology	2022– SEKI Yuji South American Archaeology, Cultural Anthropology
1993– KATAKURA Motoko* Social Geography, Ethnology	2003– SUGITA Shigeharu Computer Ethnology, Study of Civilization	2014– TAMURA Katsumi Cultural Anthropology; Southeast Asia, East Asia	2023– KONAGAYA Yuki Cultural Anthropology
1993– OGYU Chikasato* Cultural Structure of Latin America	2004– FUJII Tatsuhiko Prehistory of the New World Continent	2014– YOSHIMOTO Shinobu Textile Arts and Technology; Asia, Africa, America, Europe	2023– MORI Akiko Cultural Anthropology, Ethnography; Central Europe, Germany, Austria, Japan
1993– UMESAO Tadao* Ethnology, Comparative Study of Civilizations	2004– KUMAKURA Isao History of Japanese Culture	2015– KUBO Masatoshi Ethno-Informatics, Computer Ethnology, Study on Aboriginal Australian Culture	2023– NISHIO Tetsuo Linguistics, Arab Culture; Middle East, North Africa
1994– TAKEMURA Takuji* Social Anthropology	2004– TACHIKAWA Musashi Philosophy of Religion, Buddhist Thought	2015– SHOJI Hiroshi* Finno-Ugric Linguistics, Ethnolinguistics, Language Policy; Northern Europe, China	2023– SUZUKI Nanami Cultural Anthropology, Culture of Medicine, Life-Design Studies, American and European Medieval Social History
1995– CHOU Ta-sheng* Theory of Material Culture	2004– TANABE Shigeharu Social Anthropology of Southeast Asia	2015– YASUGI Yoshiho Linguistic Anthropology, Writing Systems, Mayan Civilization, Mesoamerica	2024– IKEYA Kazunobu Environmental Anthropology, Cultural Geography, Southern African, Japan
1995– MATSUZAWA Kazuko Social Anthropology	2004– YAMADA Mutsuo* History of Latin America, Area Study of Latin America	2016– ASAKURA Toshio Social Structures in East Asia; Korea, Japan	2024– KISHIGAMI Nobuhiro Cultural Anthropology, Inuit Studies; North America
1996– DAIMARU Hiroshi* Comparative Study of the History of Lifestyles, Based on Clothing, etc.	2005– EGUCHI, Paul K.* Oral Literature and Naterial Culture of the Fulfulde-speaking People, Cameroon	2016– SASAKI Shiro Socioeconomic History of Reindeer-Breeders and Forest Hunters; Northern Asia, Siberia	2024– SONODA Naoko Conservation Science
1996– FUJII Tomoaki* Ethnomusicology, Anthropology of Music	2005– MATSUBARA Masatake Social Structure, Turkey, Eastern Asia, Central Asia	2016– SUGIMOTO Yoshio Social Anthropology; Sri Lanka, South India	* Deceased
1996– TOMOEDA Hiroyasu* Social Anthropology	2005– OHTSUKA Kazuyoshi Aynu (Ainu) Culture, Material Culture of North Asian Food Gatherers, Paleoeecology, Prehistoric Subsistence, Japan		
1997– SASAKI Komei* History of Agriculture in East and South Asia	2006– ISHIMORI Shuzo Cultural Development Studies, Anthropology of Tourism, Museum anthropology, Cultural Resource Management; Micronesia, Polynesia, Southeast Asia, Japan		
1997– SUGIMURA Toh* Study of Ethno-arts			
1998– WADA Shohei Comparative Study of Cultures, Anthropology of Africa			

Note: Visiting Research Fellows and Overseas Visiting Fellows are not included in the numbers given for “Staff” members.

Category	Director-General	Prof.	Assoc. Prof.	Assist. Prof.	Project Prof.	Project Assoc. Prof.	Project Assist. Prof.	Subtotal	Administrative & Technical Staff	Total
Staff	1	25	19	9	0	0	1	55	47	102
Visiting Research Fellows		6	3	1				10		10
Overseas Visiting Fellows		1								1
Director-General	1							1		1
Audit Office									(4)	(4)
Office of Administration									26	26
Office of Information and Documentation		(1)							21(1)	21(2)
Research Departments		21	16	6	0	0	1	44		44
Center for Cultural Resource Studies		4	3	3				10		10

Parenthesis () shows the number of staff members holding two posts. The figure for administrative staff includes one project specialist.

Budget

FY2023

Revenue

Category	(Millions of yen)
Management Expenses Grants	2,711
Foundation	2,499
Others	212
Revenue	69
Admission fee	49
Others	20
Facilities	24
Grants-in-Aid for Scientific Research	235
Total	3,039

Expense

Category	(Millions of yen)
Salaries	1,151
Others	1,653
Education and research	516
Joint use	672
General management costs	441
Facilities	24
Grants-in-Aid for Scientific Research	235
Total	3,039

Note: These figures are from the revised budget include the carry-over from the previous fical year and exclude the carry-over to the next fiscal year.

FY2024

Category	(Millions of yen)
Management Expenses Grants	2,659
Foundation	2,458
Others	201
Revenue	50
Admission fee	35
Others	15
Facilities	222
Grants-in-Aid for Scientific Research	212
Total	3,143

Category	(Millions of yen)
Salaries	1,145
Others	1,786
Education and research	500
Joint use	662
General management costs	402
Facilities	222
Grants-in-Aid for Scientific Research	212
Total	3,143

Note: These figures are from the annual budget include the carry-over from the previous fiscal year

Facilities

The Basic Concept of the Museum Design

The Museum consists of low-rise buildings which naturally blend with the surrounding park environment. In designing the buildings, special emphasis was placed on the aesthetics of traditional Japanese architecture. Each floor of the Museum’s main building is composed of several blocks. While the outer walls of these blocks have no openings for natural lighting, plenty of light is let in through the inner courtyards (patios). The patios provide a sense of openness and connection with the outer world, and are also used as open-air exhibition space.

Each floor is designed to be dedicated to a specific purpose, namely, storage on the first floor, exhibitions on the second, and research on the third and fourth. Elevators and staircases provide direct access to these floors. As the route is laid out in a manner that allows for a circular trip, visitors can either go through all the exhibitions, or choose to visit certain exhibitions of interest.

In addition, in order to make the Museum barrier-free and universally accessible, changes such as the installation of Braille labels are ongoing.

Total area of grounds: 40,821 m²
Ground area occupied by the museum buildings: 18,177 m²
Total floor space: 52,648 m²

Fourth Floor 7,207 m²
Offices of research staff members, laboratories, library stacks, and storage area.

Second Floor 16,830 m²
Exhibition halls, patio, central patio, multifunctional terminal room, administration offices, Special Exhibition hall and auditorium (seating capacity for 462 persons).

Main Exhibition Halls 10,938 m²

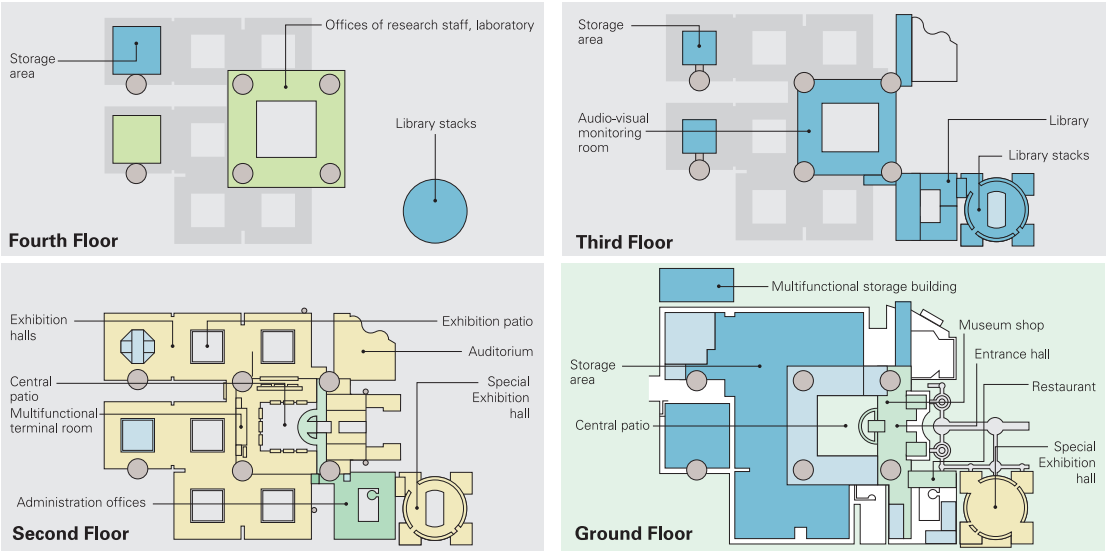
Third Floor 7,340 m²
The library, library stacks, audio-visual monitoring room and storage areas.

Ground Floor 17,410 m²
Entrance hall, central patio, restaurant, Special Exhibition hall, storage area and museum shop.

Special Exhibition Halls **Ground Floor** 851 m²
Second Floor 639 m²

Rooftop 846 m²

Basement 3,015 m²



Cooperative Agreements

Promotion of Research Coordination and Collaboration with Overseas Research Institutes

Minpaku has established academic agreements with overseas research institutions for research cooperation and collaboration. In FY 2023, the agreements were renewed (concluded) with Shung Ye Museum of Formosan Aborigines (Taiwan), National Museums Board (Zambia), Samarkand Archaeological Institute named Y. Gulomov, Agency of Cultural Heritage of the Republic of Uzbekistan (Uzbekistan), Bangladesh Agricultural University (Bangladesh), The Faculty of Forestry, Kasetsart University (Thailand), and National Museums of Kenya (Kenya). And the agreements were newly concluded with Ghent University (Belgium), The Grand Egyptian Museum (Egypt), and Taiwan Hakka Culture Development Center (Taiwan).

Name of the Institutes	Date of Agreement	Outline of Agreement
Taiwan Hakka Culture Development Center (Taiwan)	November 21, 2023	Exchange and cooperation in museum exhibitions.
The Grand Egyptian Museum (Egypt)	October 1, 2023	Exchange of information relating to personnel, management, display, analysis of museum materials, and overall museum management; and promotion of joint research and exhibition planning.
Ghent University (Belgium)	September 18, 2023	International joint investigations and research, researcher exchanges, and information exchange related to exhibition materials.
The Faculty of Forestry, Kasetsart University (Thailand)	November 22, 2019	Academic research and exchange in joint research, training, publishing, and exhibition projects.
National Museums of Kenya (Kenya)	November 7, 2019	Conducting collaborative research projects including those on museum objects possessed by the Parties; Organizing lectures, symposia and joint exhibitions; Exchange of research information and materials; Promoting cultural and museological exchange programs; and Cooperation in exchange of research staff.
Bangladesh Agricultural University (Bangladesh)	November 3, 2019	Academic research and exchange in joint research, training, publishing, and exhibition projects.
Samarkand Archaeological Institute named Y. Gulomov, Agency of Cultural Heritage of the Republic of Uzbekistan (Uzbekistan)	September 19, 2019	Cooperation in a variety of research and academic projects; collaborative research in archeology, anthropology, geography, conservation science and other related fields; exchange of visiting scholars, curators and/or other research staff, etc.
Research Center for Environmental Archaeology, Maritime Archaeology and Sustainable Culture, Research Organization for Archaeology, Research Organization for Archaeology, Language, and Literature, The National Research and Innovation Agency (Indonesia)	June 10, 2019	International joint archaeological research in Indonesia, to reporting programme effectiveness, activities, and research results, etc.
National Museums Board (Zambia)	August 12, 2018	International joint research, exchange of researchers, exchange of museum-related materials and information, etc.
National Museum of Iran (Iran)	November 8, 2017	International joint research, exchange of researchers, exchange of museum-related materials and information, etc.
University of British Columbia, Museum of Anthropology (Canada)	March 9, 2017	Academic cooperation and exchange on research projects, exhibitions, database development, etc.
Institute of Anthropology and the Library, Zhejiang University (China)	April 19, 2016	Contribution of references, exchange of human resources, joint research.
Vanderbilt University (USA)	January 15, 2016	Strengthening global collaborative research and organizing international symposia.
National Museum of Taiwan History (Taiwan)	October 16, 2015	Collaborative research and cooperation on exhibition development.
The Museum of Northern Arizona (USA)	July 4, 2014	Strengthening academic exchange and collaborative research.
The Institute of Ethnology and Anthropology, Chinese Academy of Social Sciences (China)	August 28, 2012	Along with other scholarly exchanges, Minpaku participates in research projects and the exchange or shared use of research materials, academic data and publications.
The National Museum of the Philippines (Philippines)	July 18, 2012	International joint research, exchange of researchers, exchange through projects that include joint research training, publication and exhibits.
A:shiwi A:w'an Museum and Heritage Center (USA)	June 3, 2012	Scholarly cooperation, development of joint research projects, and exhibits or educational use of museum materials.
Taipei National University of the Arts (Taiwan)	May 15, 2009	Academic exchange, development of research projects, cooperation on museum exhibitions and educational initiatives, exchange of academic information and publications.
Inner Mongolia University (China)	September 22, 2008	Exchange between teaching faculty and researchers, development of research projects, cooperation on museum exhibitions and education, exchange of academic documents and publications.
The National Folk Museum of Korea (Korea)	July 11, 2007	Exchange between teaching faculty and researchers, development of research projects, cooperation on museum exhibitions and education, exchange of academic documents and publications.
Shung Ye Museum of Formosan Aborigines (Taiwan)	July 1, 2006	Collaborative research and cooperation on exhibition development.
The National University of San Marcos (Peru)	June 14, 2005	Joint research projects and academic exchanges in archaeology.

Promotion of Collaboration and Cooperation with Research Organizations in Japan

To promote collaboration, cooperation and joint research with universities, research organizations and academic associations in Japan, agreements are concluded following consideration. In December 2023, agreements were concluded with the Osaka International Peace Center, in January 2024 with the Sacred Heart Institute for Sustainable Futures, University of the Sacred Heart.

Name of the Institutes	Date of Agreement	Summary of the Agreement
Sacred Heart Institute for Sustainable Futures, University of the Sacred Heart	January 9, 2024	Contribution to academic research, education, and social development
Osaka International Peace Center	December 1, 2023	Contribution to academic research, education, and social development
Hokkaido Kushiro Koryo High School	March 27, 2023	Contribution to education and social development
Research Institute for the Dynamics of Civilizations, Okayama University	September 12, 2022	Contribution to academic research, education, and social development
National Institute of Informatics	August 1, 2022	Contribution to academic research, education, and social development
Kanazawa College of Art	March 22, 2021	Based on the Heisei Hyakukouhishou collection database, the status and use of databases in higher education are verified. Educational materials for higher education were put to practical use by linking them to social businesses
Institute for the Study of Japanese Folk Culture, Kanagawa University	March 26, 2020	Contribution to academic research, education, and social development
The Society for Research in Asiatic Music	November 3, 2019	Contribution to the sustainable development of music culture and the elaboration of research on music culture
The Japan Society for the Conservation of Cultural Property	November 19, 2018	Promotion and dissemination of science, technology and skill for conservation of cultural property
Kyoto University of the Arts	March 19, 2018	Contribution to academic research, education, and social development
Osaka University	March 17, 2018	Contribution to academic research, education, social contribution, and development of other activities
Yamagata University	Februrary 16, 2018	Contribution to academic research, education, and social development
Graduate School of Humanities, Kobe University	July 15, 2016	Academic exchange on research education
Research Institute for Languages and Cultures of Asia and Africa, Tokyo University of Foreign Studies	November 25, 2015	Academic research, collaboration, and cooperation related to language and culture around the world
The Osaka Aquarium Kaiyukan	November 19, 2015	Contribution to society, collaboration, and cooperation through promotion of cooperation between businesses and universities, and advancement of academic research and research outcomes
Osaka Institute of Technology	March 23, 2015	Academic research and collaborative cooperation related to information media digital contents
Kanazawa University	March 23, 2014	Organizational system strengthening based on collaboration and cooperation of both institutions
Japanese Society of Cultural Anthropology	February 27, 2008	Promotion of utilization of research collaboration, research exchange, and mutual research outcomes. Contribution to the development and spread of academic matters in human society

Number of Visitors in FY2023

Annual Number of Visitors

Total number of visitors	233,649	Adults	164,057
Daily average	763	Students	64,636
Total number of visitors since the establishment of the Museum	12,079,092	Children	4,956
Special Exhibitions			
“Arte Popular”: The Creative and Critical Power of Latin Americans” March 9 – May 30, 2023			44,971
“Divine Affection: Enchanting Images of Hindu Deities” September 14 – December 5, 2023			34,438
Thematic Exhibition			
“Screen Prints of Canada’s Northwest Coast Peoples” September 7 – December 12, 2023			48,302
Collection Exhibition			
“The Hunter’s View of the Earth” July 6 – August 8, 2023			10,533
Cooperative Exhibition			
“Slash-and-Burn Culture in the Kyushu Mountains” October 7 – December 3, 2023			812
Historia Terrace Itsukidani			
Traveling Exhibitions			
“REGNUM IMAGINARIUM: Realm of the Marvelous and Uncanny” March 11 – May 14, 2023			23,006
Fukuoka City Museum			
“UNIVERSAL MUSEUM: Exploring the New Field of Tactile Sensation” April 1 – May 7, 2023			5,202
The OHK Okayama Broadcasting Station at KURUN HALL			

Special Exhibitions

Exhibition Title	Period	Exhibition Title	Period
The Great Andes Civilization: Inca, the Reviving Empire of the Sun	Sept. 14 – Dec. 12, 1989	Arabesque of Batik Designs and Techniwues: From Java to the World	Sept. 7 – Dec. 5, 2006
Masks in Equatorial Africa: Hidden Forest Spirits*	Mar. 15 – May 31, 1990	Pilgrimage and Sacred Places: A Voyage of Self Discovery	Mar. 15 – June 5, 2007
The E.S. Morse Collection: Meiji Folk Crafts that Crossed the Pacific	Sept. 13 – Dec. 4, 1990	The Great Ocean Voyage: VAKA MOANA and Island Life Today	Sept. 13 – Dec. 11, 2007
Engelbert Kämpfer: The Genroku Period Viewed by a German*	Feb. 7 – Apr. 16, 1991	The Profound Earth: Ethnic Life and Crafts of China	Mar. 13 – June 3, 2008
Greater India: Deities and Man in the Hindu World	Aug. 1 – Nov. 5, 1991	SELF and OTHER: Portraits from Asia and Europe	Sept. 11 – Nov. 25, 2008
Daghestan, Crossroads of Civilization: Ethnic Arts of the Caucasus*	Mar. 12 – May 19, 1992	When Japan’s Tea Ceremony Artisans Meet Minpaku’s Collections: Creative Art in Perspective	Mar. 12 – June 14, 2009
Aboriginal Australia: Fifty Thousand Years of Hunters and Spirits	Sept. 10 – Dec. 8, 1992	Voices from the Land, Visions of Life: Beauty Created by the Indigenous Peoples of Canada	Sept. 10 – Dec. 8, 2009
Asia Viewed by Torii Ryuzo, a Pioneer of Ethnology*	Mar. 11 – May 14, 1993	Africa in the Works of El AnatsuiA Fateful Journey	Sept. 16 – Dec. 7, 2010
Ainu Moshiri: The Ainu World Viewed through Their Designs	June 10 – Aug. 17, 1993	Umesao Tadao: An Explorer For the Future	Mar. 10 – June 14, 2011
Javanese Cotton Print: A World of Diverse Traditions	Sept. 9 – Nov. 30, 1993	Devotion to the Arts of Living Daily Life Among the Aynu of the Kurile, Sakhalin and Hokkaido Islands: Objects from the Late 19th - Early 20th Century Collections of Ethnological Museums in Germany and Japan	Oct. 6 – Dec. 6, 2011
Indigenous Peoples and Cultures in Taiwan*	Mar. 10 – May 24, 1994	“Modernologio” Now: Kon Wajiro’s Science of the Present	Apr. 26 – June 19, 2012
Woven Flowers of the Silk Road: An Introduction to the Carpet Heritage of West Asia and Central Asia	Sept. 8 – Nov. 29, 1994	The Warp and Weft of Weaving: Handlooms and Textiles of the World	Sept. 13 – Nov. 27, 2012
Music and Musical Instruments in Latin America*	Mar. 16 – May 30, 1995	Zafimaniry Style: Life and Handicrafts in the Mist Forest of Madagascar	Mar. 14 – June 11, 2013
Weaving Color as Culture: The Maya Today	Sept. 14 – Nov. 30, 1995	Shibusawa Keizo Memorial Project Attic Museum	Sept. 19 – Dec. 3, 2013
Japan through the Eyes of Siebold and His Son	Aug. 1 – Nov. 19, 1996	The Power of Images: The National Museum of Ethnology Collection	Sept. 11 – Dec. 9, 2014
Images of Other Cultures: From the British Museum Collection	Sept. 25, 1997 – Jan. 27, 1998	Food Culture in Korea and Japan: The Tastes of NANUM and OMOTENASHI	Aug. 27 – Nov. 10, 2015
What is Inside? Forays and X-rays into Ethnographic Objects*	Mar. 12 – May 26, 1998	Ishuretsuzo, the Image of Ezo: Tracing Persons, Things and the World	Feb. 25 – May 10, 2016
Mongolia: The Rise of Nomadic Culture	July 30 – Nov. 24, 1998	Amazing Show Tents in Japan	Sept. 8 – Nov. 29, 2016
Cultural Heritage of the South Pacific: The George Brown Collection*	Mar. 11 – May 31, 1999	Beads in the World	Mar. 9 – June 6, 2017
Ethnic Cultures Abroad: People Moving, Cultures Mixing	Sept. 9, 1999 – Jan. 11, 2000	Revisiting Siebold’s Japan Museum	Aug. 10 – Oct. 10, 2017
Theater at the Museum: The Expressive Body	Mar. 18 – May 14, 2000	A “Tower of the Sun” Collection: Expo ’70 Ethnological Mission	Mar. 8 – May 29, 2018
Ethnology and the Rise of Cinema: From Shadow Theater to Multi-Media	July 20 – Nov. 21, 2000	Transmitting Art and Craft: Japanese Industrial Design Originating in Tohoku	Sept. 13 – Nov. 27, 2018
Ethnology of Life in the Taisho and Showa Periods: Shibusawa Keizo and the Attic Museum	Mar. 15 – June 5, 2001	Toys Expo—Children in Modern Japan	Mar. 21 – May 28, 2019
The Sea Otter and Glass Beads: Trade of Indigenous Peoples of the North Pacific Rim	Sept. 20, 2001 – Jan. 15, 2002	REGNUM IMAGINARIUM: Realm of the Marvelous and Uncanny	Aug. 29 – Nov. 26, 2019
Seoul Style 2002: Life as It Is with the Lee Family	Mar. 21 – July 16, 2002	Treasures of Indigenous Peoples	Oct. 1 – Dec. 15, 2020
Wrapping Culture: Furoshiki and Wrapping Cloths of the World	Oct. 3, 2002 – Jan. 14, 2003	Local Cultures Assisting Revitalization: 10 Years since the Great East Japan Earthquake	Mar. 4 – May. 18, 2021
Mandala Deities in Tibet and Nepal	Mar. 13 – June 17, 2003	“UNIVERSAL MUSEUM”: Exploring the New Field of Tactile Sensation	Sept. 2 – Nov. 30, 2021
A West African Story-telling Village	July 24 – Nov. 25, 2003	100 Years of Mongolia: Encounters through Photography	Mar. 17 – May 31, 2022
Messages from the Ainu: Craft and Spirit	Jan. 8 – Feb. 15, 2004	“Homō loquēns”: talking human”: Wonders of Language and Languages”	Sept. 1 – Nov. 23, 2022
Multiethnic Japan: The Life and History of Immigrants	Mar. 25 – June 15, 2004	“Arte Popular”: The Creative and Critical Power of Latin Americans”	Mar. 9 – May 30, 2023
The Arabian Nights	Sept. 9 – Dec. 7, 2004	“Divine Affection: Enchanting Images of Hindu Deities”	Sept. 14 – Dec. 5, 2023
More Happy Every Day: The World of Bricolage Art	Mar. 17 – June 7, 2005	“Masks in the Performing Arts and Festivals of Japan”	Mar. 28 – June 11, 2024
Fashioning India	Sept. 8 – Dec. 6, 2005		
Minpaku Kids-World: Objects as Ties between Children and Their Society	Mar. 16 – May 30, 2006		

*The distinction between a special exhibition and a thematic exhibition was abolished in 2001 and now all of the temporary exhibitions are called “Special Exhibitions”.

Internet

Website <https://www.minpaku.ac.jp/>

The home page features Minpaku research, exhibits, and other activities, along with information on graduate education, publication, and materials in its library and collections.

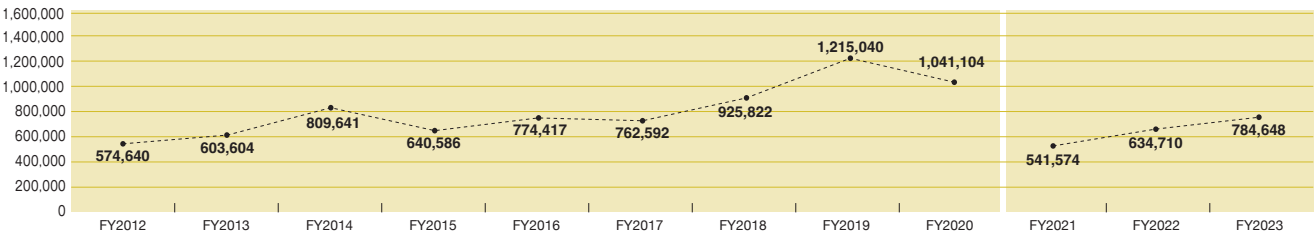
E-mail magazine <https://www.minpaku.ac.jp/research/publication/column/enews>

To provide updates on the latest research, special or thematic exhibitions and various events, like Minpaku Seminars, “Minpaku e-news”, a monthly newsletter is emailed to subscribers.

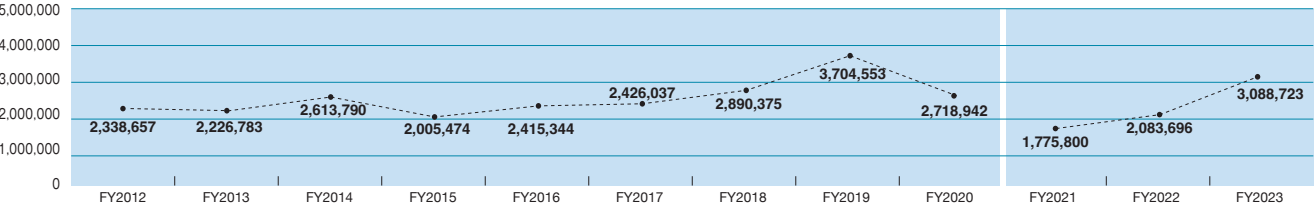
Social Media Facebook <https://www.facebook.com/MINPAKU.official>
X(Twitter) <https://twitter.com/MINPAKUofficial>
YouTube <https://www.youtube.com/MINPAKUofficial>
Instagram <https://www.instagram.com/MINPAKUofficial>

Using various social media provides opportunities to link Minpaku with people interested in cultural anthropology and ethnology, and also to give information on research and museum activities.

Number of Visitors to the Minpaku Website 784,648 (FY2023)



Number of Web Pages Accessed 3,088,723 (FY2023)



*Counting procedures have changed, due to the renewal of our website since FY2021.

Publicity through the Public Media

Publicity is developed through the mass media to convey information about Minpaku’s activities. A program entitled “Window of Research” was launched through the “Meeting for Media and Minpaku Staff”, held monthly on every third Thursday. The Museum has been mentioned in a total of 677 progarms and articles: 16 on TV and on radio, 416 in newspapers, 130 in magazines and 115 in other media. Minpaku has also been featured in regular radio broadcasts and newspaper series.

“Tabi, Iroiro Chikyujin [Journeys: Various People on the Earth]”

Published from April 2005 to March 2009 as a series entitled “The Study of Other Cultures” in the Mainichi Shinbun newspaper.

Materials for the General Public

Publicity

MINPAKU Anthropology Newsletter
Gekkan Minpaku [Minpaku Monthly]
Minpaku Calender

Guidebooks and Catalogues

Special Exhibition catalogue
“Divine Affection: Enchanting Images of Hindu Deities”

Special Exhibition catalogue
“Masks in the Performing Arts and Festivals of Japan”





National Institutes for the Humanities (NIHU)

The National Institutes for the Humanities (NIHU) was established in 2004 as a corporation to support and further develop inter-university research institutes* that promote research in the humanities.

***Inter-University Research Institutes**

As Japanese Centers of Excellence (COE) in their respective research fields, these institutes provide universities and other research institutes in Japan and overseas with large facilities and equipment as well as vast materials and information that are difficult for any individual university to maintain, thereby facilitating effective joint research.

NIHU’s six institutes

- National Museum of Japanese History (REKIHAKU)
- National Institute of Japanese Literature (NIJL)
- National Institute for Japanese Language and Linguistics (NINJAL)
- International Research Center for Japanese Studies (NICHIBUNKEN)
- Research Institute for Humanity and Nature (RIHN)
- National Museum of Ethnology (MINPAKU)

These six institutes offer courses at the Graduate University for Advanced Studies, SOKENDAI. The six graduate (doctoral) courses take advantage of the institutes' respective resources to train scholars for broad perspective and a high level of expertise and learning.

The NIHU Headquarters houses the Center for Innovative Research (CIR), which conducts research and projects that link multiple institutes and universities, and promotes joint research using a research infrastructure built on digital technology.



NIHU’s Mission

As the only inter-university research institute corporation for the humanities, NIHU’s mission is to comprehensively explore humanity and its cultures, and through this exploration, to ask what true abundance is, to promote harmony between nature and humanity, and to contribute to the survival and coexistence of humankind.

NIHU’s Vision

To realize its mission, in the NIHU’s Fourth Mid-term Plan Period (FY2022-2027), NIHU aims to explore various social issues related to the diversity of human culture and social dynamics, try to solve them, and present new values and humanities knowledge that will serve as guidelines for the formation of a future society in which people and nature live in harmony and where science, technology, and humanity coexist. To achieve this, the Center for Innovative Research (CIR) was established in April 2022 with the aim of forming new knowledge open to society. Based on the philosophy of open humanities research through co-creation with various people in Japan and overseas, the center continues to build a research platform using digital technology, promote joint research through that platform, and work on the formation of a “Knowledge Forum” as a place for exchange and collaboration with various people in society and the formation of an international network.

Center for Innovative Research (CIR)

Based on the mission and vision, CIR promotes “NIHU Research Projects” and “NIHU Co-creation Initiatives.”

NIHU Research Projects

NIHU Research Projects conduct basic and interdisciplinary researches, and promote three types of projects: Institute-based Projects, Multidisciplinary Collaborative Projects, and Network-based Projects.

Institute-based Projects NIHU’s six institutes have established priority research themes in accordance with their respective missions. They collaborate with institutes and researchers both in Japan and overseas to conduct research that deepens knowledge and understanding of their respective specialist areas.	Construction of Japanese Historical Knowledge and Open Science Research
	Model Building in the Humanities through Data-Driven Problem Solving
	Empirical and Applied Research on the Japanese Language Based on Open Language Resources
	New Departures and Consortium for Global Japanese Studies: Pioneering and Cultivating Global Japanese Studies
	Renewing Modern Civilization through Nature-culture Complex toward Solving Global Environmental Problems
Multidisciplinary Collaborative Projects These are the projects in which NIHU’s institutes take on a central role while collaborating with other NIHU’s institutes as well as universities and other external institutes, working with research themes that cut across different fields.	Sustainable Development Humanities Research Based on the Info-Forum Archives of Human Culture
	Interdisciplinary and Integrated Studies on Local Cultures: Aiming for the Emergence of Novel Communities
	Object-based Research of Nature-human Interactions up to the Anthropocene
Network-based Projects These are the projects in which NIHU’s institutes play a central role in forming a network with universities and other research institutes in Japan and overseas as well as implementing issues that are important to Japan and the world.	Expansion Studies of Synthetic Bibliology
	Global Area Studies Program
	Inter-University Research Institute Network Project to Preserve and Succeed Historical and Cultural Resources

NIHU Co-creation Initiatives

These are projects that promote the sharing of research results and co-creation with local communities and societies, promote “Co-creation Research Projects” and “Co-creation Outreach,” whose aim is to develop research in three ways: “Social Co-creation” “Digitalization,” and “International Co-creation”.

Co-creation Research Projects

These projects promote joint research through co-creation with various organizations and people inside and outside NIHU as well as develop research in the following three ways.

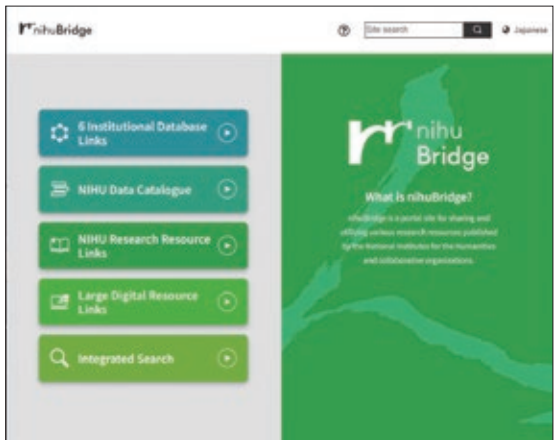
- **Establishing Science for Universal Communication (S_COM)** [Social Co-creation]
- **Building Digital Library for Humanities** [Digitalization]
- **Japan-related Documents and Artifacts Held Overseas** [International Co-creation]
 - 1) Early Diplomatic Japanese Collections Abroad: Contextualizing 19th Century Japanese Material Heritage in World History through On-site and Online Research and Use
 - 2) Study on the Construction of Archival Infrastructure for the History of Modern Japan-Vatican Relations
 - 3) Japan-related Documents and Artifacts in Hawai‘i: Historical and Social Survey Interface

Co-creation Outreach

These initiatives implement projects to accelerate the three types of research development as well as aim to enhance and innovate research at NIHU’s institutes and universities and other external institutes.

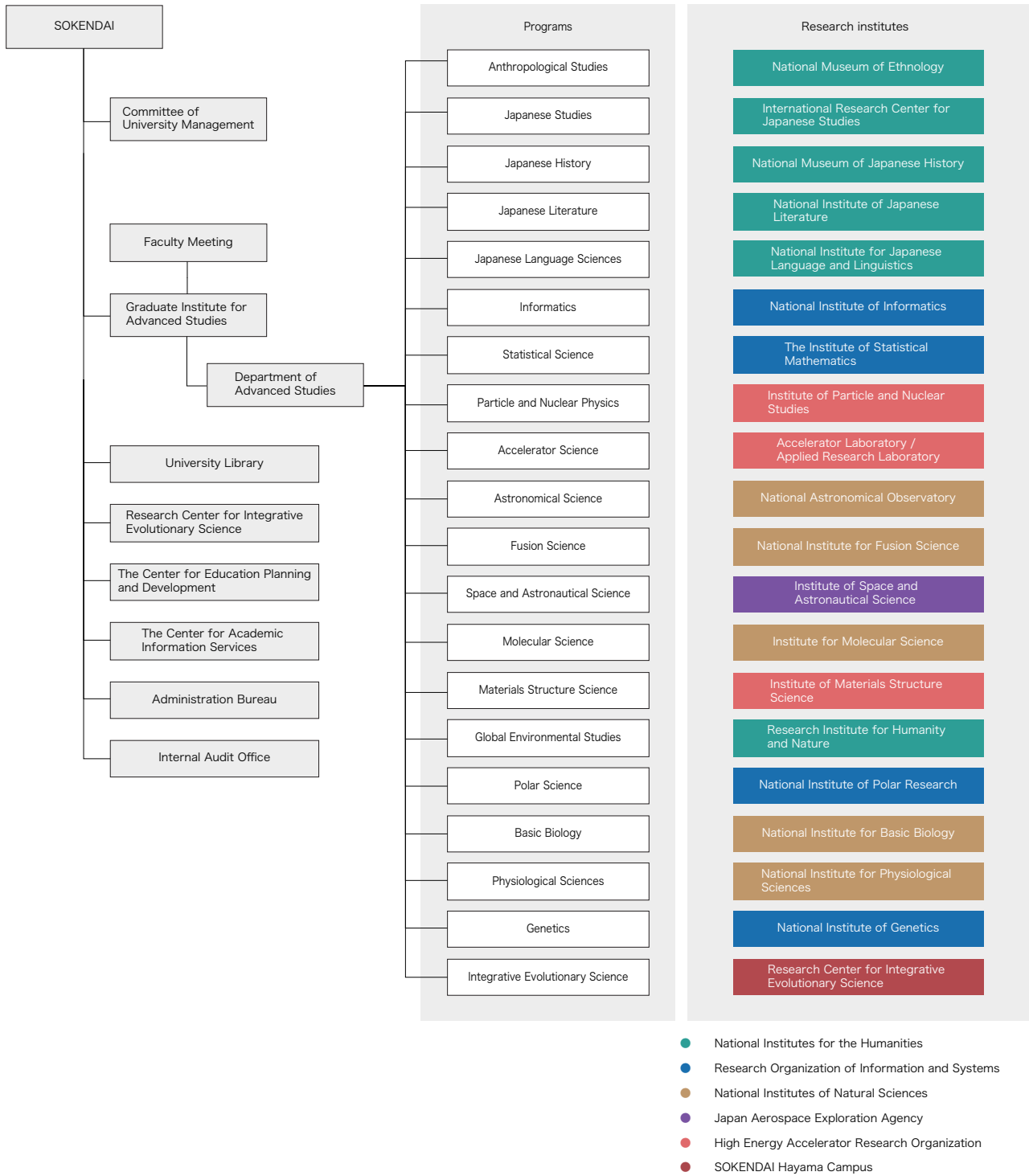
- **NIHU Knowledge Co-creation Projects** [Social Co-creation]
- **NIHU “Digital Humanities” (DH) Projects** [Digitalization]
- **NIHU Global Partnership** [International Co-creation]

nihuBridge
This is a portal site for sharing and utilizing diverse research resources disseminated by NIHU and its constituent institutes.



The Graduate University for Advanced Studies, SOKENDAI, is a graduate university based on Inter-University Research Institutes. By promoting interaction among universities and graduate schools, both domestic and overseas, using a world-leading research environment of those institutes as a training ground, SOKENDAI aims to develop researchers with the ability to think from broad, comprehensive, and global perspectives.

University Organization



The Anthropological Studies Program

The Museum has established the Anthropological Studies (doctoral) program, Graduate Institute for Advanced Studies, SOKENDAI. It provides education and conducts research on the diverse cultures that humankind has created worldwide, from prehistoric to modern times. From the viewpoints of cultural anthropology, ethnology, and related fields, we guide ethnographic research, which descriptively analyzes a specific culture, and cross-cultural research, which compares different cultures from a specific perspective. Students aim to complete their doctoral dissertations using data collected through field work, objects, videos/sounds, and documentary materials held at the Museum.

Outline of the Program

Educational studies are composed of lectures and instruction by individual faculty members and shared seminars by multiple faculty members. Two types of shared seminars are offered: the basic seminar called the “First year Seminar” which is mainly for freshmen and the “Dissertation Seminar” for sophomores and more advanced students focusing on instruction for thesis writing. Common subjects (advanced theory) on cultural anthropology and ethnology are also conducted primarily for first year students.

Under student exchange agreements, credits for the program can be transferred among the Graduate School of Asian and African Area Studies at Kyoto University, the Graduate School of Human Sciences at Osaka University, the Graduate School of Intercultural Studies and the Graduate School of Human Development and Environment at Kobe University.

In most cases, students work on preparation for fieldwork during the first year, and proceed to fieldwork in the second or subsequent years under the supervision of their advisors. Then, after finishing their fieldwork, the students complete their dissertations under the individual guidance of their advisors and through participation in the “Dissertation Seminar”.

Number of Students as of April 1, 2024

Quota and Current Number of Students

Department / Program	Quota	Current Students			Total
		First year	Second year	Third year	
Anthropological Studies	4	2	4		6
Regional Studies				10	10
Comparative Studies				8	8
Total		2	4	18	24

※ In April 2023, the Departments of Regional Studies and Comparative Studies were reorganized into the Anthropological Studies Program.

Number of Doctoral Degrees Awarded

Academic Year	Regional Studies		Comparative Studies		Anthropological Studies		Total
	By Completing Doctoral Course	By Submitting Dissertation	By Completing Doctoral Course	By Submitting Dissertation	By Completing Doctoral Course	By Submitting Dissertation	
1991			1				1
1992							
1993			1	1			2
1994	2		1				3
1995	2		1				3
1996		3					3
1997	3		4				7
1998	4	2					6
1999							
2000	2		2	1			5
2001	1	1	2	1			5
2002	1	1		2			4
2003							
2004	2	3					5
2005	4	2		2			8
2006	2		3				5
2007	2	1	3				6
2008	1		1				2
2009		1	1	1			3
2010	2		2	3			7
2011	3		1	1			5
2012	1	1	1	1			4
2013			1	1			2
2014	2	1	2				5
2015	3	1					4
2016	1	1	1				3
2017	1		1				2
2018	1						1
2019	1		2				3
2020	1	1	2				4
2021	4		3	1			8
2022	1		1				2
2023	1					3	4
Total	48	19	37	15		3	122

Acceptance of Overseas Researchers under the JSPS RONPAKU Program

Grantees of the JSPS RONPAKU (Dissertation Ph.D.) Program conduct their research under the supervision of advisors in the program.

General Information

Hours and Closing Days

Hours	10:00 a.m. to 5:00 p.m. Entry permitted up to 4:30 p.m.
Closing days	Every Wednesday. When a national holiday falls on a Wednesday, the Museum is closed on the following weekday. The Museum is closed from December 28 until January 4 for the year-end and New Year period.

Admission Charges

	Individual	Groups (20 persons or more) and visitors eligible for discount *
Adults	¥580	¥490
College and University Students	¥250	¥200
High School Students and Younger	Free	

An additional charge may be necessary for Special Exhibitions.

Admission is free for holders of a Disabled Person's Handbook and one accompanying person per holder.

Admission is free for members of the Japanese Society of Cultural Anthropology, International Council of Museums, and Japan Association of Museums (a membership certificate is required).

The following visitors qualify for a discounted admission charge (please present documentation); 1) Groups of 20 or more; 2) College, university, graduate, and vocational school students who use the Museum as part of their course work; 3) those who have visited the Museum within the previous three months; 4) Visitors aged 65 and over (ID required)

(If you purchase a regular Museum ticket at the entrance to the Natural and Cultural Garden, the difference will be refunded at the Museum.)

Contact Information

National Museum of Ethnology
10-1 Senri Expo Park, Suita, Osaka 565-8511, Japan
Tel: +81-6-6876-2151 Fax: +81-6-6875-0401

Website

https://www.minpaku.ac.jp/en

Information and Services

The Minpaku Associates Tel: +81-6-6877-8893 (The Senri Foundation 9:00 a.m.–5:00 p.m. on weekdays only) minpakutomo@senri-f.or.jp

The organization, Minpaku Associates was formed to support the activities of the National Museum of Ethnology and to use its facilities actively.

With the cooperation of the museum, the Minpaku Associates publishes *Kikan Minzokugaku* (Ethnological Quarterly) and organizes and operates Ethnological Tours and Experiential Seminars offering opportunities for direct contact with various cultures, lectures, and other events.

Museum Shop (Hours: 10:00 a.m. to 5:00 p.m.) Tel: +81-6-6876-3112

At the museum shop, visitors can purchase folk crafts from various parts of the world, books about anthropology and ethnology, and the museum's original goods.

Restaurant (Hours: 11:00 a.m. to 4:30 p.m. Last Orders: 4:00 p.m.) Tel: +81-6-6310-0810

We serve lunch and dinner, including such dishes as hamburger steaks and pastas, and light meals and desserts. We can seat 110 diners, and our restaurant accepts reservations from small groups with a few individuals to large groups such as parties with many people. Group customers can also reserve our box lunches.



Minpaku Associates Desk



Museum Shop



Restaurant



Overseas Ethnological Tours organized by Minpaku Associates (*Minpaku Tomonokai*) (FY2019)



Kikan Minzokugaku [Ethnological Quarterly]



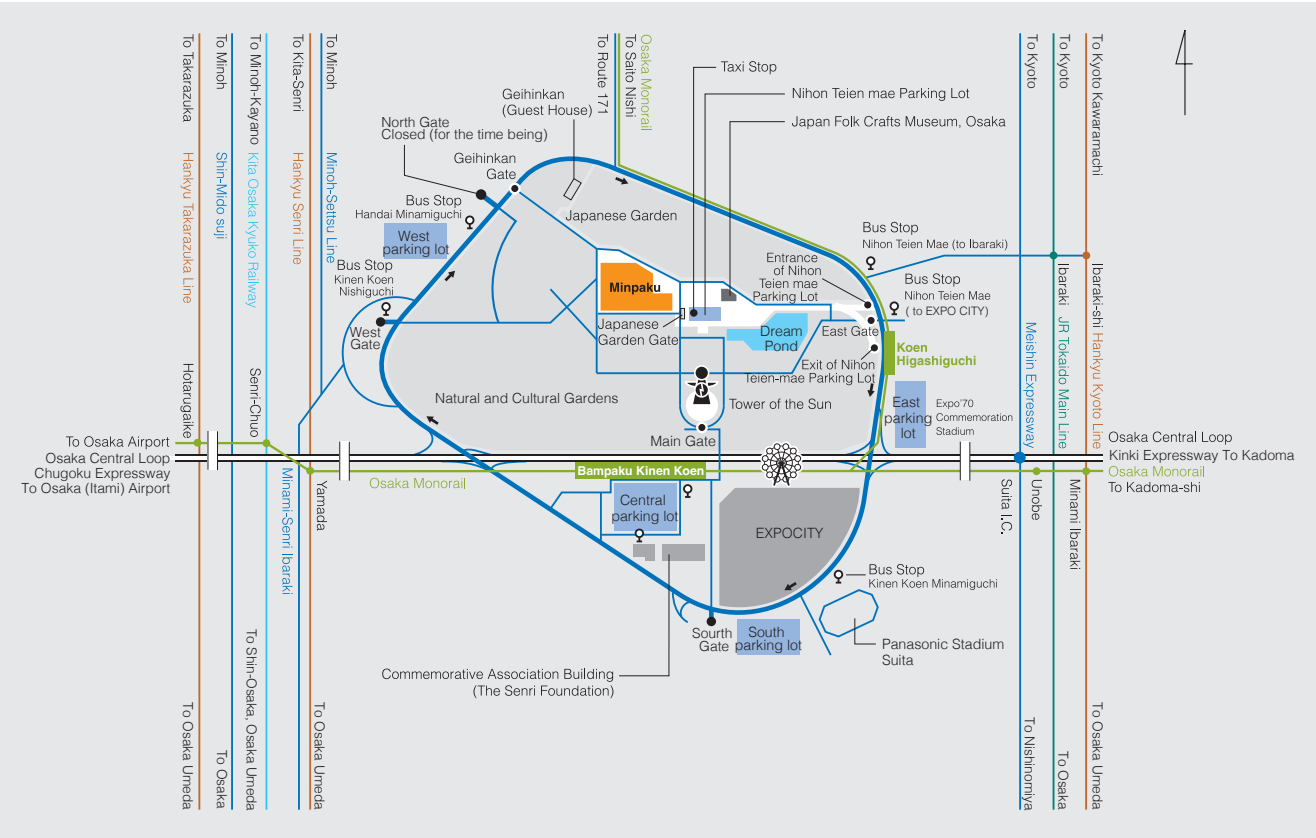
Access Information

- By Osaka Monorail, from Bampaku Kinen Koen Station or Koen Higashiguchi Station it is about a 15-minute walk to the Museum through the Natural and Cultural Garden.
- By bus, from Hankyu Ibaraki-shi Station and JR Ibaraki Station alight at Nihon Teien Mae, from which it is about a 13-minute walk to Minpaku.
- By car, please park at one of the parking lots for the Expo'70 Commemorative Park. From the nearest pay parking lot, in front of the Japanese Garden, it is about a 5-minute walk to the Museum. Please enter the Museum through the Japanese Garden Gate.
- By taxi, you will get dropped off in the parking lot in front of the Japanese Garden. Please enter the Museum through the Japanese Garden Gate.

* Please buy a museum ticket at the gate of the Expo'70 Commemorative Park. Ticket holders can pass through the park at no charge.

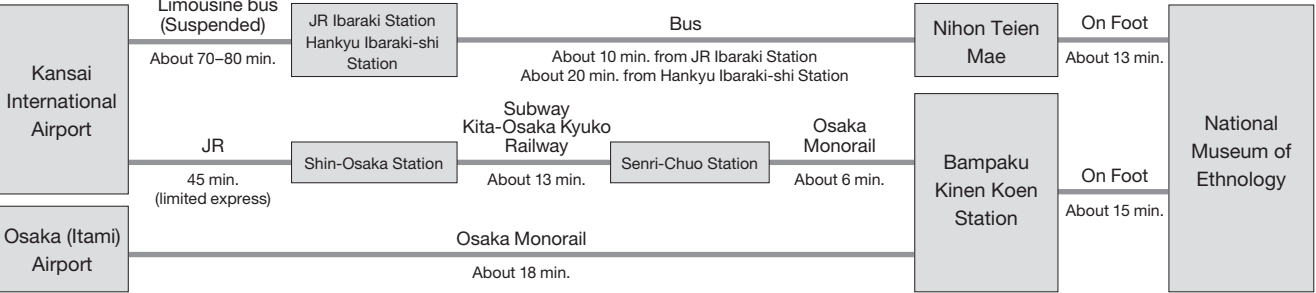
* If you visit the Expo'70 Commemorative Park, you need to buy an entry ticket.

Map



Major Access Routes

Access routes to the Museum from airports and major railway stations are as shown below.



The National Museum of Ethnology's emblem was created at its foundation (1974), symbolizing the solidarity and activity of the Earth (ethnicity and culture). The protruding parts represent Earth's seven continents and civilizations. The part surrounding the circle and protrusions represents Earth's seven seas.

Survey and Guide
2024-25



National Museum of Ethnology

10-1 Senri Expo Park, Suita, Osaka 565-8511, Japan