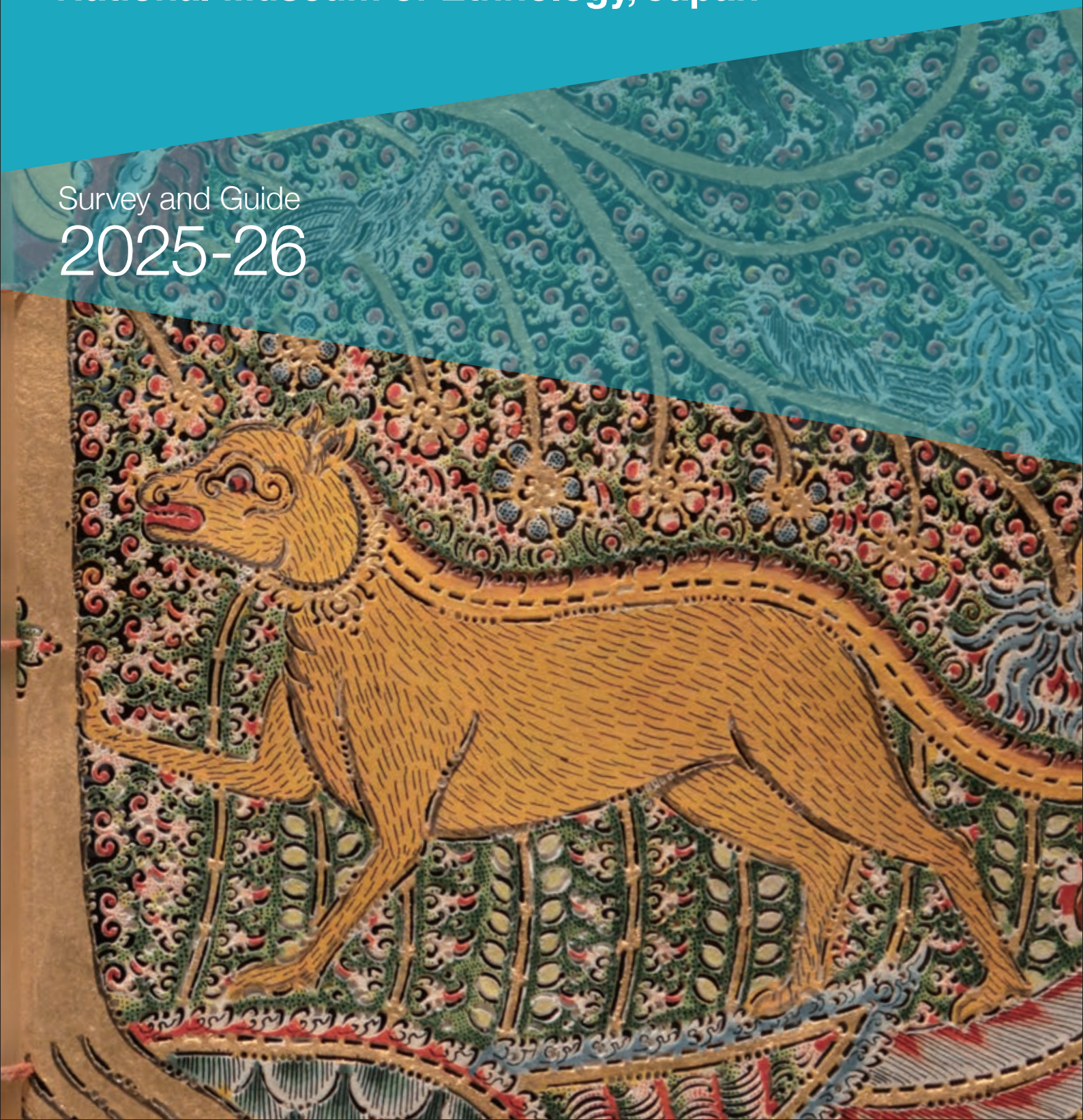


National Museum of Ethnology, Japan

Survey and Guide
2025-26





Survey and Guide for 2025-26

(Fiscal Year April 1, 2025–
March 31, 2026)

Contents

Preface	1
Purpose and Functions	2
Organization	3
Research Activities	8
Joint Use of the Museum	24
Joint-Use Facilities for Scientific Research	24
Library	25
Materials	26
Exhibitions	28
International Cooperation	36
Partnership between the Museum and Society	37
Data Collection	41
History	42
Former Directors-General/Professors Emeriti	43
Facilities	45
Cooperative Agreements	46
Materials and Databases	48
National Institutes for the Humanities	52
SOKENDAI (The Graduate University for Advanced Studies)	54
General Information	56



Shadow puppet (Gunungan),
Indonesia

Preface

The National Museum of Ethnology (Minpaku) was founded in June 1974 as an Inter-University Research Institute Corporation to promote research in ethnology, cultural anthropology, and related disciplines.

Minpaku researchers have engaged in joint research with both domestic and international researchers, exploring the dynamics of society as well as the diversity and commonalities of human cultures through fieldwork conducted around the world. Their findings have been presented to the public not only through academic papers and publications but also through the practice of exhibitions. Minpaku includes the Anthropological Studies Program, a doctoral program offered by the Graduate University for Advanced Studies (SOKENDAI), which provides specialized education aligned with its mission. Such an institution dedicated to cultural anthropology and ethnology, where research, (museum) exhibitions, and education are interlinked in this manner, is rare in the world.

Globalization and division coexist in today's world. The origins of globalization, with interconnection of society, economy, and culture among across countries or regions, can be traced back to the Age of Discovery in the 15th century. Indigenous peoples of the Americas, which were conquered by Europeans, sustained severe hardships that reduced their populations drastically because of harsh forced labor and diseases introduced from the outside. Since then, rapid environmental destruction has often been cited as a harmful effect of globalization. The recent COVID-19 pandemic clarified the repetition of history and highlighted the dangers of globalization as more tangible. Indeed, globalization has contributed to phenomena that have adversely affected many peoples. It is also true that groups around the world have created unique cultures by skillfully leveraging the advances in transportation and communication devices which support globalization. Universal concepts such as human rights and particularly the rights of indigenous peoples have emerged one after another as critiques and corrections of the negative aspects of globalization, enabling those who have been oppressed to speak out and raise objections.

Yet, in the present day, which is often said to mark a societal turning point since the pandemic, it is noticeable around the world that people tend to be absorbed in their individual concerns rather than to be adopting a broader perspective of humanity or the Earth. Division is one manifestation of this trend. The efforts of groups in various regions, including nations, to weave the threads of their own stories should be respected, not dismissed, in the sense of securing cultural diversity. However, if we fail at acknowledging the stories and histories of others, at empathizing with them, and at cultivating a spirit of tolerance, then we risk creating a barren world in which individual stories merely clash with one another. Now more than ever, we must adopt an attitude that acknowledges the existence of individual cultures and societies, while remaining mindful of the entirety of humanity and the Earth.

With such awareness, Minpaku is promoting “Ethnic Groups and Ethnicity in the Post-Nationalist Era” as representative research at the museum. This research is intended to reexamine the relation between the state and ethnic groups from multiple perspectives and to explore the realization of a cohesive society in which humanity lives together hand in hand, in a world that adds another layer of confusion. The museum is also promoting another project: “The Construction of the Info-Forum Archives for Cultural Resources of the World.” For this project, after sharing the specimens and visual materials which we have collected and stored for nearly 50 years with providers and provider groups, we reassess the significance of these materials and compile them into a database. It has almost become common for the task of narrating cultures to be undertaken not only by researchers. By creating materials and collaborating with cultural bearers and researchers, a forum is formed, enabling us to gain new kinds of knowledge and to open new horizons for research. Sharing research outcomes will also lead local people to use them for social development. I believe this is a pioneering attempt at international cooperation aimed at realizing a cohesive society.

In this way, Minpaku continues to strive to provide guiding principles for a better human society through joint research, dissemination of research findings, and development of human resources. We sincerely and earnestly hope for your continued support and cooperation.



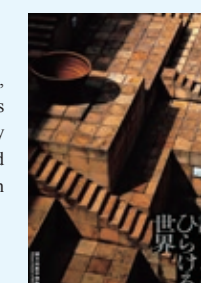
SEKI Yuji
Director-General
National Museum of Ethnology, Japan

関 雄二

Publication of “Fifty-Year History of the National Museum of Ethnology”

To commemorate its 50th anniversary, *Dialogue opens the world: Trajectory of Minpaku in 50 years* was published on December 25, 2024. This volume clearly presents our engagement with the contemporary world, its role as a research museum, exchanges with scholars both in Japan and abroad, and the research themes pursued by current staff, thereby broadly reaching out to both the academic community and general public. In addition, National Museum of Ethnology Semicentennial Archives categorizes materials into administration and management, research, community engagement, exhibitions, graduate education, publications, and commemorative photograph exhibition and makes them available online in a searchable database.

<https://www.r.minpaku.ac.jp/anniversary/50data/index.html>



Purpose and Functions

Purpose

The National Museum of Ethnology conducts anthropological and ethnological research. It aims to promote a general understanding and awareness of peoples, societies, and cultures worldwide through the collection, preservation, conservation, research, release, and educational dissemination of ethnographic materials and public exhibitions. Minpaku was established in 1974 as an Inter-University Research Institute under the “Law to amend part of the National School Establishment Law” (No. 81, 1974). In April 2004, it made a fresh start as a member of the National Institutes for the Humanities, under the “National University Corporation Act” (No. 112, 2003).

Functions

Research Institute	The Museum functions as a research institute equipped with a museum. It serves as a research center for anthropology and ethnology, providing information and research results to academic communities and the general public through publications, exhibitions, and other means. All researchers at Minpaku are experts in various fields, such as cultural anthropology, ethnology, linguistics, ecological anthropology, archaeology, ethno-technology, ethno-arts, area studies, and museology.
Joint Research	As an Inter-University Research Institute, the Museum supports and organizes joint research projects with researchers from other academic institutions. We collaborate with researchers at universities and research institutions, both in Japan and overseas, to plan and execute various research projects. Materials collected and stored in the Museum are used widely by those researchers.
Information Center	The Museum collects, manages, and conserves materials that contribute to the understanding of the world’s peoples, societies, and cultures. These materials include artifacts, visual and audio materials, library materials, Human Relation Area Files (HRAF), and various archival materials generated and accumulated through research. By making information on these materials available to the public through databases and other means, we encourage researchers to use them.
Exhibitions	<p>The Museum makes the research results available to the public through exhibitions. Academic staff members plan and manage exhibitions with the basic policy of closely linking research and exhibitions.</p> <p>The main halls hold Regional and Cross-cultural exhibitions. The former displays cultures and societies in major regions, whereas the latter emphasizes cultural elements, such as music and language, which are shared across human societies. Thematic and collection exhibitions are occasionally held. They focus on rapidly changing global situations and feature current research in cultural anthropology and ethnology.</p> <p>In addition, the Museum comprehensively and systematically presents special exhibitions on specific themes.</p>
Social Contributions	To present its latest research findings to the public, the Museum offers academic lecture programs, seminars, weekend salons, special lectures and performances, film shows, and various workshops. The Museum also organizes intensive courses on Museums and Community Development, and various projects for other museums, as part of its international cooperation activities.
Graduate Programs	The Museum is one of the core research institutes of the Graduate University for Advanced Studies (SOKENDAI), with Anthropological Studies program of the Graduate Institute for Advanced Studies (three-year doctoral program). We develop researchers who study the knowledge and methodologies accumulated in cultural anthropology, ethnology, and related fields, which can promote a high level of research by applying the acquired knowledge and methodologies. We offer collaborative educational programs in cooperation with several graduate universities.



Organization

Governing Body

Director-General Seventh Director-General April 2025–	Deputy Director-General (in charge of research, exchange and Institutional Research)	Deputy Director-General (in charge of planning and coordination)	Audit Office
SEKI Yuji	HIRAI Kyonosuke Professor, Department of Modern Society and Civilization	FUKUOKA Shota Professor, Department of Modern Society and Civilization	SUHARA Aki Director

Administrative Organization

Office of Administration SUHARA Aki Director	Office of Information and Documentation FUKUOKA Shota Director	SUHARA Aki Deputy Director
General Affairs Section UOI Keita Head	Research Cooperation Section ONO Tomoyasu Head	Finance Section FUJIMOTO Kenji Head
	Information Planning Section ONO Etsuo Head	Information Systems and Services Section NAKAYAMA Takahiro Head

Board of Advisors

The advisors discuss the Museum’s management, and operational issues of critical importance, at request of the Director-General.

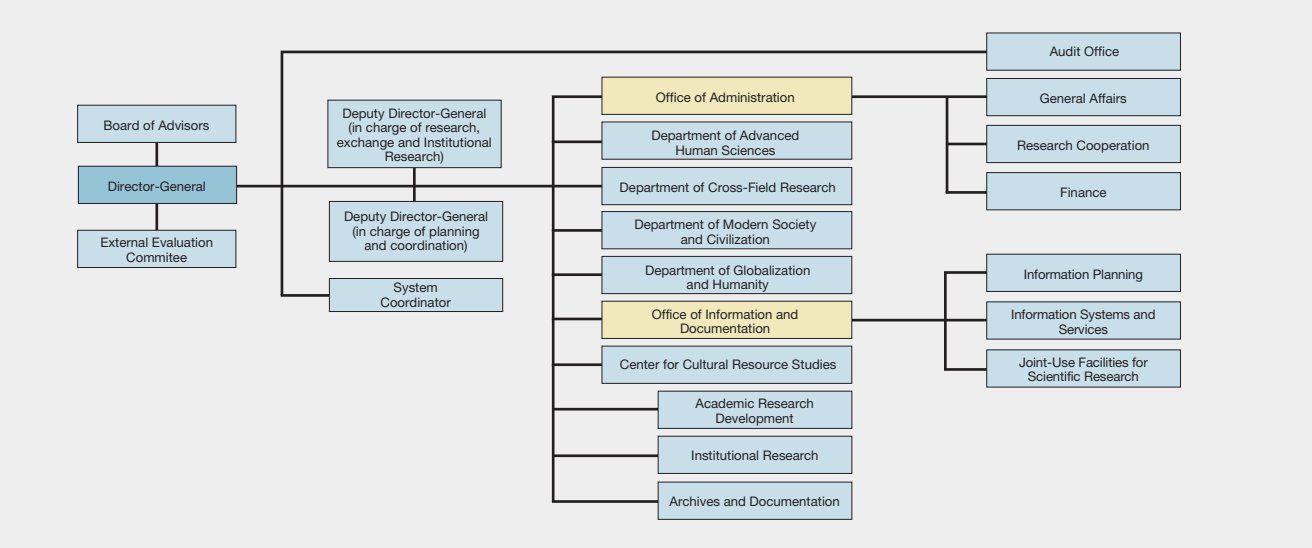
External Members	Internal Members
GOTO Akira Academic Adviser, KIKAI institute for Coral Reef Sciences	FUKUOKA Shota Deputy Director-General (in charge of planning and coordination)/Director, Office of Information and Documentation
KIGAWA Rika Head, Museum Science Division, Curatorial Department, Kyusyu National Museum	HIDAKA Shingo Director, Center for Cultural Resource Studies
KUBOTA Sachiko President, Ashiya University/ Professor Emeritus, Kobe University	HIRAI Kyonosuke Deputy Director-General (in charge of research, exchange and Institutional Research) /Director, Academic Research Development
MIZUSAWA Tsutomu Former Director, The Museum of Modern Art, Kamakura & Hayama	MIO Minoru Professor, Department of Globalization and Humanity/Chair, Anthropological Studies, Graduate Institute for Advanced Studies, SOKENDAI (The Graduate University of Advanced Studies)
NAKATANI Ayami Professor, School of Sociology, Kwansei Gakuin University	NIWA Norio Director, Department of Cross-Field Research, NOBAYASHI Atsushi Director, Department of Globalization and Humanity
OKADA Hiroki Professor, Graduate School of Intercultural Studies, Kobe University	SHIMAMURA Ippei Director, Department of Modern Society and Civilization
SASAKI Shigehiro Professor, Graduate School of Humanities, Nagoya University	YAMANAKA Yuriko Director, Department of Advanced Human Sciences
TAKAKURA Hiroki Professor, Center for Northeast Asian Studies, Tohoku University	
TOMIZAWA Hisao Vice-president, University of Shizuoka/Specially Appointed Professor, School of International Relations, University of Shizuoka	

External Evaluation Committee

The committee meets to inspect and evaluate the Museum’s research and educational activities at request of the Director-General.

DEGUCHI Akira Director, The Open University of Japan Shimane Study Center	KAMEI Atsuko Deputy Director, JICA Ogata Sadako Research Institute for Peace and Development	OKAZAKI Yoshiko Former President/Professor Emeritus, University of the Sacred Heart	TAKANO Akihiko Professor Emeritus, National Institute of Informatics	USHIROSHOJI Masahiro Director, Kitakyushu Municipal Museum of Art
ICHIKAWA Mitsuo Professor Emeritus, Kyoto University	OKAHASHI Tatsuya Chairman, The Resona Foundation for Asia and Oceania	SAKIMOTO Toshiki President, KANSAI・OSAKA 21st Century Association	TANAKA Masakazu Vice-president, Professional Institute of International Fashion	

Organization Chart



Research Organization

as of December 1, 2025

Department of Advanced Human Sciences

YAMANAKA Yuriko Director

Professors		Associate Professors		Assistant Professors
HIROSE Koujirou Japanese Religious History, Folklore	MARUKAWA Yuzo Informatics of Association, Information Service for Cultural Assets	HIRANO Chikako Cultural Anthropology, Indigenous Australian Studies	SUEMORI Kaoru Conservation Science, Asian Art Studies	MIYAMAE Chisako Heritage Science, Digital Heritage
KAWASE Itsushi Visual Anthropology	YAMANAKA Yuriko Comparative Study of Traditions on Alexander the Great; West Asia, Iran	OKADA Emi Ethnomusicology, South Asian Studies	YOSHIOKA Noboru Linguistics, South Asian Studies	TAKASHINA Maki Archival Science
KIKUSAWA Ritsuko Linguistics, Austronesian Languages		Project Assistant Professors		
		ICHINO Shinichiro Institutional Research and Evaluation		
		OKAMOTO Susumu Research and Coordination of Research Events and Activities Related to Establishing Spatiotemporal Linguistics		

The purpose of this Department is to deepen theoretical research in the basic study of human sciences and thereby extract new academic challenges and create a new cross-disciplinary domain.

Department of Cross-Field Research

NIWA Norio Director

Professors		Associate Professors	Assistant Professors	
HAN Min Social Anthropology; China	MATSUO-GOGATE Mizuho Cultural Anthropology, South Asian Studies	ICHIKAWA Akira Mesoamerican Archaeology, Latin American Studies	OTA Shimpei Sociocultural Anthropology; Northeast Asia	ASADA Naoki Cultural Anthropology; Eastern Europe
IIDA Taku Ecological Anthropology, Fisher Studies; Madagascar, Japan	MINAMI Makito Ecological Anthropology; South Asia			FUJII Shinichi Cultural Anthropology; Oceanic Studies
KASHINAGA Masao Ethnography of Southeast Asia; Vietnam, Tai Area	NIWA Norio Social Anthropology; Oceania			

The Department aims to create a new domain of anthropological area studies by deepening regional ethnographic research in various regions of the world and establishing new foundations for cross-field research.

Department of Modern Society and Civilization

SHIMAMURA Ipppei Director

Professors		Associate Professors	Assistant Professor
FUKUOKA Shota Ethnomusicology; Southeast Asia, Indonesia	SAITO Akira Ethnohistory; Latin America	FUJIMOTO Toko Cultural Anthropology, Central Asian Studies	IKEBE Tomoki Anthropological Study of the Interaction between Texts and Oral Traditions in Senegal
HIRAI Kyonosuke Economic Anthropology, Anthropology of Work; Southeast Asia	SHIMAMURA Ipppei Cultural Anthropology, Mongolian Studies	ITO Atsunori Social Anthropology, Native American Studies, Indigenous Arts and Intellectual Property Issues	SUZUKI Kota Folk Culture, History of the Performing Arts; Japan
	UEBA Yoko Textile and Handcraft; South Asia, Middle East		

The Department aims to create a set of new values for responding to that challenges humanity faces today, and to envisage the future of civilization through interdisciplinary approach of looking into the future by way of the events of the past.

Department of Globalization and Humanity

NOBAYASHI Atsushi Director

Professors		Associate Professors		
MIO Minoru Religious Anthropology; South Asia, India	NOBUTA Toshihiro Social Anthropology, Southeast Asian Studies	AISHIMA Hatsuki Social Anthropology; Islam, Middle East	NAKAGAWA Osamu Cultural Anthropology, Anthropology of Europe	
NOBAYASHI Atsushi Ethnoarchaeology, Material Culture, Austronesian Cultures; East Asia, Formosa	UDA Shuhei Environmental Folklore; East Asia	CHE Sohee Medical Anthropology, Northeast Asian Studies	SUZUKI Hideaki History of the Indian Ocean World, Swahili Society	
		KURODA Kenji Middle Eastern Studies, Cultural Anthropology	YAGI Yuriko Cultural Anthropology, Latin American Studies	

To create new values for responding to challenges that humanity faces today, the department and to envisage a global society through an interdisciplinary approach of taking a bird's eye view of the world by way of regional events.

Center for Cultural Resource Studies

HIDAKA Shingo Director

Professors		Associate Professors	Assistant Professors
HIDAKA Shingo Conservation Science	ONO Rintaro Marine Archaeology, Southeast Asian Studies	MISHIMA Teiko Anthropology, International Migration; Senegal, West Africa	KAWANISHI Eriko Anthropology, Pagan Studies
		NARA Masashi Cultural Anthropology, Chinese Studies	NOGUCHI Hiroya Cultural Anthropology, Alaska Studies
		SAITO Reiko Ainu and Northern Indigenous Peoples Studies, Material Culture; North Pacific Rim	WINCHESTER, Mark Modern and Contemporary Ainu Intellectual History
		TERAMURA Hirofumi Culture and Information Science, Archaeological Information	

The Center aims to plan and promote research projects that improve the sharing of cultural resources in an interdisciplinary and international manner.

Academic Research Development

HIRAI Kyonosuke Director

AISHIMA Hatsuki Associate Professor, Department of Globalization and Humanity	KASHINAGA Masao Professor, Department of Cross-Field Research	MIO Minoru Professor, Department of Globalization and Humanity
ICHIKAWA Akira Associate Professor, Department of Cross-Field Research	MATSUO Mizuho Professor, Department of Cross-Field Research	UDA Shuhei Professor, Department of Globalization and Humanity

Academic Research Development aims to plan and oversee the infrastructure enhancement and international and national strategies for research organizations to be used jointly to explore new domains.

Institutional Research

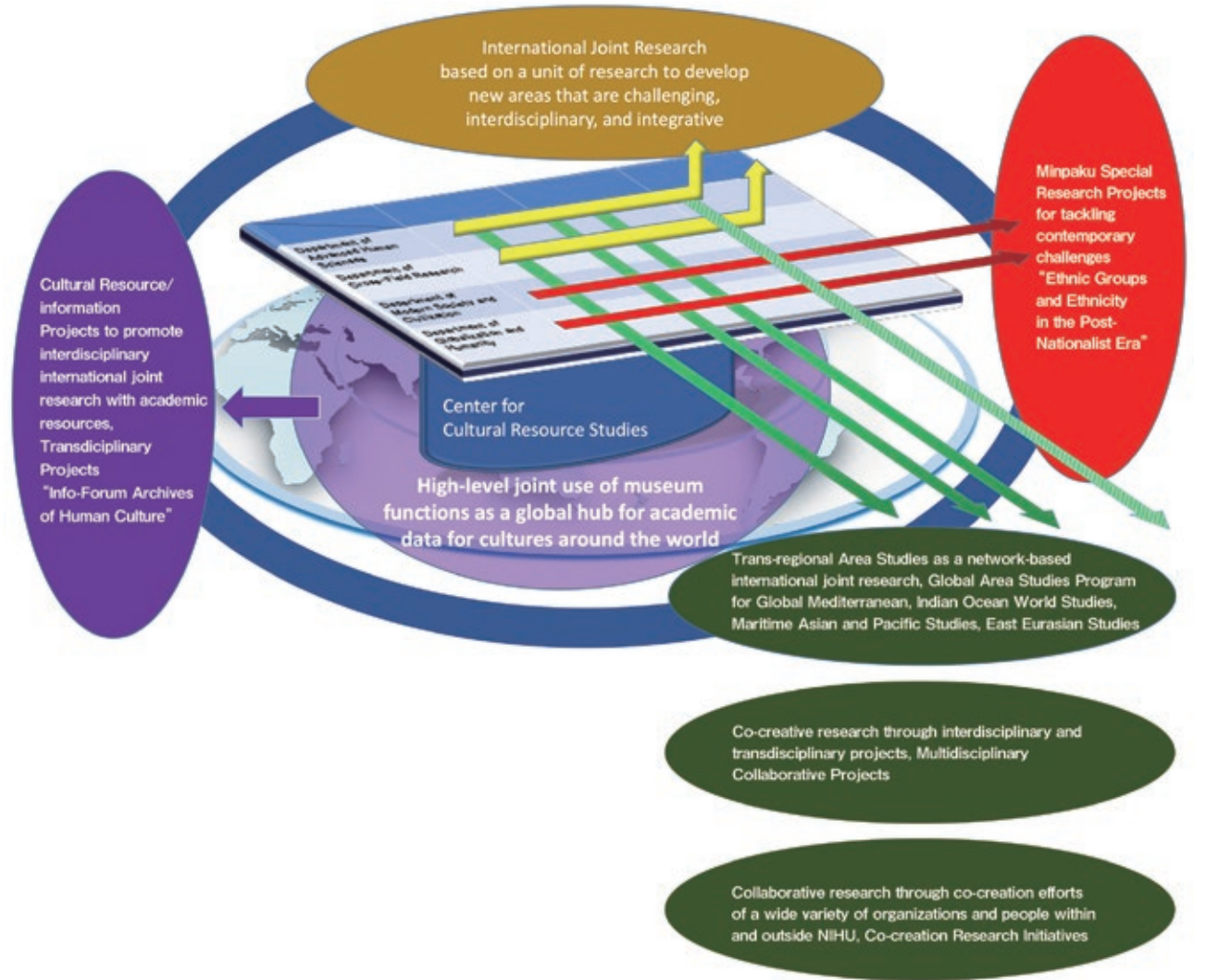
HIRAI Kyonosuke Director

ICHINO Shinichiro Project Assistant Professor, Department of Advanced Human Sciences	KAWANISHI Eriko Assistant Professor, Center for Cultural Resource Studies	SUZUKI Kota Associate Professor, Department of Modern Society and Civilization
---	--	---

Archives and Documentation

IIDA Taku Director

MARUKAWA Yuzo Professor, Department of Advanced Human Sciences	TAKASHINA Maki Assistant Professor, Department of Advanced Human Sciences
---	--



Organization	Research Associates				Center for Cultural Resource Studies				Center for Cultural Resource Studies			
	Department of Advanced Human Sciences				AZUMA Kentaro				HASHIMOTO Sachi			
	DOI Huyuki				Associate Professor, Graduate School of Humanities, Nagoya University				Assistant work for the cultural resource planning project “Research on the Preservation and Management of Tangible Cultural Resources”			
	Lecturer, Faculty of International Studies, Tenri University				How Can Tourism Be “Wellness”? Towards a Community of Happiness and Creativity				ISHIYAMA Shun			
	History of Oceania Collection and Its Objects in Japan: Focusing on Museum Collections of the University of Tokyo and Minpaku				KITAHARA Mokottunas				Research work for promoting “building a digital library of academic knowledge”			
	FUKUI Eijiro				Professor, Center for Ainu and Indigenous Studies, Hokkaido University				KAWABATA Yuki			
Research Activities	Associate Professor, Faculty of Law and Literature, Shimane University				Material Culture of the Sakhalin Ainu and Its Differences and Similarities with Neighboring Cultures				Research activities on language change and development through the integration of geography and history			
	Transformation and Expansion of the Concept of Personhood in Contemporary Societies				ONO Mayumi				KAWAMURA Yukako			
	HAMADA Karen				Associate Professor, College of Letters, Ritsumeikan University				Assistant work for the cultural resource planning project “Research on the Preservation and Management of Tangible Cultural Resources”			
	Associate Professor, Graduate School of Arts and Sciences, The University of Tokyo				Anthropology of Tourism 3.0: Experiences through the Body and Circulation				KOBAYASHI Naoaki			
	Mobility and Materiality of Manuscripts: Towards a Multi-disciplinary Study and Creating Digital Archive of Manuscripts in the Nakanishi Collection				Overseas Visiting Fellows				Research work for promoting “building a digital library of academic knowledge”			
									SUZUKI Hiroyuki			
Joint Use of the Museum	Department of Cross-Field Research				Adhi Agus Oktaviana, S.Hum				Research activities on language change and development through the integration of geography and history			
	IWATANI Hirofumi				Junior research fellow, Badan Riset dan Inovasi Nasional (BRIN), National Research and Innovation Agency				TAIRA Eiji			
	Lecturer, College of Humanities and Social Sciences, Himeji Dokkyo University				November 17, 2025 – January 9, 2026				Work on sign language-related research, research assistance, and management of related projects			
	A Methodological Reflection for the Practice of Photo-Ethnography				Rock Art and Human Migration in Indonesia				TAKEMOTO Naoya			
	KIMURA Shuhei				BEGMATOV Alisher Kholmurotovich				Work on Co-creation Research Project “Establishing Science for Universal Communication” in Co-creation Research Initiatives			
	Professor, Institute of Humanities and Social Sciences, University of Tsukuba				Researcher, Berlin-Brandenburg Academy of Sciences							
International Cooperation etc.	An Innovation of Anthropology of Disaster: Exploring Alternatives to the Disaster Management Cycle Model				October 6, 2025 – December 17, 2025							
	KUNIHIO Akiko				Professor, Adam Mickiewicz University				Research Fellows, NIHU			
	Professor, Faculty of Letters, Arts and Sciences, Waseda University				September 16, 2025 – December 12, 2025				Research Fellow(RPD)			
	Anthropological Studies on Contemporaneous Global Phenomena of Gender/Sex/Sexuality				The relationship between dominant majorities and dominated minorities in a comparative perspective				The Development of Social Welfare in East Africa and Migration in the British Empire: Gujarati Muslims and the Question of Modernity			
	NAWATA Hiroshi				DEPLAPLACE Gregory Nathanael				TANI Kenichi			
	Professor, Center for Transdisciplinary Education and Research, Graduate School of Human and Environmental Studies, Kyoto University				Professor, École Pratique des Hautes Études in Paris				Research Fellow(PD)			
Data Collection	Study of the Motoko Katakura Fieldwork Materials Collected in Kingdom of Saudi Arabia				November 1, 2025 – December 1, 2025				A Study on the Tension and Coexistence of Ethnic Identity and Nationalism in the Case of Iranian-azeri			
	SAKURA Osamu				LAHN Julie Maree							
	Professor, Department of Social Design, Faculty of Humanities and Social Sciences, Jissen Women's University				Fellow, Australian National University							
	A Theoretical Examination of Techno-Animism and Its Perspective from Science, Technology, and Society Studies				December 3, 2025 – February 26, 2026							
	TSUMURA Fumihiko				Public Anthropological Research on Digital Return							
	Professor, Faculty of Foreign Studies, Meijo University				RIALL Lucy							
NIHU	Anthropological Study of Magical Contingency and Communalities				Professor, European University Institute				Research Fellows, NIHU Center for Innovative Research			
					November 1, 2024 – October 31, 2025				Global Area Studies Program Steering Unit			
	Department of Modern Society and Civilization				Historical Research on Italy's Informal Empire and the Role of Mediterranean Mobility, 19th and 20th Centuries				YAMAZAKI Nobuko			
	INOUE Toshiaki				SOLOVYEVA Alevtina				Project Assistant Professor			
	Professor, Faculty of International Humanities, Josai International University				Director, The Centre for Oriental Studies, Institute of Cultural Research, University of Tartu				Global Mediterranean			
	A Study on the Use of Northern Dene(Northern Athabaskan) Ethnographic Collection of the National Museum of Ethnology				February 1, 2026 – January 31, 2027				OKAMOTO Naoko			
SOKENDAI	NAKAO Katsumi				Vernacular religion as a resilience and creative technics in terms of global changes and everyday life lability: reconciling experiences of the haunting history, geopolitical concerns and obscureite future among Mongolian and Turkic communities of East Eurasia				Project Assistant Professor			
	Professor, College of Arts and Sciences, J.F. Oberlin University				SYRTYPOVA Surun–Khanda Dashinimaevna				Indian Ocean World Studies			
	Examination of Anthropological History Based on National Museum of Ethnology Archive				Leading Researcher, Institute of Oriental Studies, Russian Academy of Sciences				MATSUI Azusa			
	SAKURAMA-NAKAMURA Mizuki				January 6, 2026– February 27, 2026				Project Assistant Professor			
	Associate Professor(Lecturer), Division of Language and Culture, Graduate School of Humanities, Osaka University				The Art of Mongolian Buddhism and its research methodology				Maritime Asian and Pacific Studies			
	New Cultural Dynamics in the Practices of Non-Western Popular Music				Those who have been or will be in Minpaku in FY2025. (In alphabetical order.)				MOMMA Ippei			
General Information	WADA Rei (DARTHREIDER)				Research Fellows				Project Assistant Professor			
	Rapper, Writer, Critic, Film Director				CHIU Chunni				East Eurasian Studies			
	Studies about Musical Culture (Mainly Hip-hop) Specialness and Universal Influence in Global Scale Focusing on Non–European, American Area				Investigations and research elucidating the theory and practice of distribution and dissemination of research information using cultural resources				AKAO Mitsuharu			
	Department of Globalization and Humanity				FURUSAWA Yuria				Project Assistant Professor			
	NAKAI Shinsuke				Support work for shared use of academic information, with a specific investigation of the Info-Forum archives of human culture				East Eurasian Studies			
	Associate Professor, Faculty of Agriculture, Saga University				Project Research Fellows				UEHATA Fumi			
	Rethinking Human Urban Adaptation: Global History of Livelihoods				DENG Jinxuan				Project Assistant Professor			
	NAKAO Seiji				Research activities on language change and development through the integration of geography and history				Liberal Arts Communicator			
	Associate Professor, Graduate School of Asian and African Area Studies, Kyoto University				FURUSAWA Mizuki				KUDO Sakura			
	How African Narrated “African History”: “African Historiographies” from Local Histories in Africa				Work on “Studies on the Mechanism by Which Narrative Manifests Itself in Terms of the Relationship Between Language and Music, for the Purpose of Constructing Its Development Model in Human History”				Project Assistant Professor			
									Establishing Science for Universal Communication (S_COM)			
									GUI Rong			
								Project Assistant Professor				

Organization	Research Activities				Center for Cultural Resource Studies				Center for Cultural Resource Studies							
	The Center for Cultural Resource Studies was established on April 1, 2017, with the objective of improving access to cultural resources at the Museum for interdisciplinary and international research.				Development of Cultural Resource Study				The National Museum of Ethnology (Minpaku) owns about 346,000 artifacts, 70,000 items of video and sound resources, 698,000 books, and other research resources such as photographic archives, research database, and field note archives, survey papers, and other ethnological research papers left by cultural anthropologists and ethnologists. These are important cultural resources that relate to the humanity’s cultures and activities, and precious academic resources to reflect on the past, present and future of humanity. The Museum is undertaking projects to improve the shared availability of these cultural resources for interdisciplinary and international research, by publishing the research results and information on these cultural resources through a database called Info-Forum Museum, and through other media including Special Exhibitions, Thematic Exhibitions, and Traveling Exhibitions. The Center supports these research projects, and plans and promotes new projects.							
	Projects of FY2024				Projects of FY2025				In FY 2025, we will mainly pursue three projects.							
	In FY2024, the Center supported the promotion of four database establishment projects and five database improvement projects in relation building the “Info-Forum Museum for Cultural Resources of the World.” Moreover, we hosted the International Symposium of Minpaku for the 50th Anniversary of the Museum’s Founding “Digital Humanities in Action” and, as part of the research meetings for each project, organized events such as the International Symposium Decolonizing Collection: Focusing on Indigenous Australian in Japan. Concurrently, the Center assisted in the preparation and organization of the exhibitions such as special exhibitions for the 50th Anniversary of the Museum’s Founding “Masks in the Performing Arts and Festivals of Japan” and “THE WORLD OF POET-SINGERS.” Additionally, the Center conducted research to improve the joint use of academic resources.				Research Promotion and Support for Info-Forum Archives of Human Culture Project				Since FY2022, this Museum has managed an Institution-based Transdisciplinary Project of the National Institutes for the Humanities, entitled “Sustainable development humanities research based on the Info-Forum archives of human culture.” During FY2025, four Basic Research Projects will be undertaken, including “Materials on Indigenous Australians,” “Archive of Oceanian Materials,” along with four Promotional Research Projects such as “Material-Culture and Cultural Dynamics of Northeast West Asia,” “Attire of the Korean Peninsula.” The Center studies standardization and multilingual translations of the artifacts and resources. It also supports the promotion of these projects through database building, editing and publication.							
	Research Promotion and Support for Special Exhibitions, Thematic Exhibitions, Collection Exhibitions and Traveling Exhibitions Project				The Museum implements Special Exhibitions, Thematic Exhibitions, Collection Exhibitions and Traveling Exhibitions, in order to publish its cultural resources and related research outcomes. In FY2025, the Museum will show case: a special exhibition for the 50th Anniversary of the Museum’s Founding “MINGU Design Expo: Discovering Sources of Wisdom” and special exhibitions “Humans and Boats: Maritime Life in Asia and Oceania” among others. The Center will promote the research that will enable these exhibitions and assist in the running of the exhibitions.				Research for Improving the Shared Availability of Cultural Resources				We will research the ways to promote the interdisciplinary and international joint use of the cultural resources owned by this Museum, and effective ways to contribute to university education, academic research, dissemination of knowledge to the general public, and creation of cultures by their bearers.			
	Academic Research Development				Established in April 2017, the Academic Research Development has assumed the research strategy functions that the Research Development and the Center for International Academic Exchange formerly provided for: national and international shared use and joint research; enhancing infrastructure; and plan and oversee the national and international strategies for the shared use and joint research organizations pioneering new domains. The Academic Research Development will reinforce the systematic research capabilities of each of our research departments and centers. More specifically, it engages in the activities required to promote internationally coordinated or joint research more strategically and systematically, including: improvement in the implementing organization of a research project based on shared use of resources; development, preparation and signing of (national and international) academic exchange agreements and the signing policies thereof; survey of overseas research trends; and information gathering and provision on external finances.				Institutional Research				The Institutional Research was established in April 2016 to support the Museum’s planning and decision-making by collecting and analyzing data on the Museum’s research and education and converting the compiled data and analysis results into reference materials. To fulfill this purpose, the Institutional Research mainly does the following: (1) collect and publish data on research and education; (2) analyze the data and publish the results; and (3) provide the data and analysis results for the Museum’s reforms and improvements. As a member of the National Institutes for the Humanities, the Museum establishes midterm and fiscal year plans based on six-year midterm goals set by the Ministry of Education, Culture, Sports, Science and Technology. The Museum also receives evaluations of its research and education from the National University Corporation Evaluation Committee. In addition, the Museum conducts self-inspections and self-evaluations and publishes the findings in a report. The Institutional Research collects and analyzes a wide range of data on research and education for these inspections and evaluations.			
Archives and Documentation				This section, established in 2025, succeeded Umesao Archives which includes fieldnotes, sketches, photographs, notes, draft manuscripts, printed works, review articles related to his works, and other academic resources produced by Minpaku’s first Director-General, UMESAO Tadao. It supports visitors for academic purposes based on the archivists' experiences of documenting and shelving the set of materials, and providing support primarily for scholarly research.												
Survey and Guide 2025–26												Survey and Guide 2025–26				

Minpaku Special Research Projects

Minpaku Special Research Projects is a research program organized independently by the National Museum of Ethnology, collaborating with universities and other research institutes in Japan and overseas. Based on domestic and international academic research trends and social demands, Minpaku Special Research Projects aims to create new academic fields by enhancing interdisciplinary research. During the six years of the third mid-term goals period, starting in FY2016, we adopted the umbrella theme of “Contemporary Civilization and the Future of Humanity: Environment, Culture, and Humans.” For this, we undertook solution-focused approaches to tackle urgent challenges facing our contemporary civilization.

During the six years of the fourth mid-term goals period beginning in FY2022, five research projects will be conducted under the umbrella theme of “Ethnic Groups and Ethnicity in the Post-Nationalist Era.” The research adopts a holistic perspective to the processes of the reconfiguration of ethnic groups and ethnicity in the post-nationalist era. This perspective will include culture, politics, religion, society, environment, and history. In this way, we aim to present new approaches that will contribute to the realization of a diverse and inclusive society where all people respect each other and live together regardless of cultural differences.

List of Minpaku Special Research Projects FY2022 – FY2027

Umbrella Theme “Ethnic Groups and Ethnicity in the Post-Nationalist Era”

Project Leader	Project Title	Category	Project Period
SUZUKI Motoi	Challenges for Museums in the Era of Post-nationalism: Methods of Exhibiting Minority and Indigenous Cultures	Ethnicity and Museums	April 2022–March 2025
NOBAYASHI Atsushi	Understanding Conflicts Involving the Wills and Intentions of Individuals, Affiliate Groups, and the Nation-State, and the Realization of a Nation-State Comprising Diverse Ethnic and Cultural Groups	Ethnicity and the Nation-State	April 2023–March 2026
MATSUO Mizuho	The Politics of Roots and the Arts/Techniques of Coexistence: Ethnicity and Histories in the Post-Nation-State Era	Ethnicity and History	April 2024–March 2027
NARA Masashi	Ethnicities and Religions: The Entanglements of Exclusivity and nclusivity	Ethnicity and Religion	April 2025–March 2028
NIWA Norio	Political Violence, Conflict, and Ethnicity	Ethnicity and Violence	April 2026–March 2029

Minpaku Special Research Projects Roadmap FY2022 – FY2028

Umbrella Theme “Ethnic Groups and Ethnicity in the Post-Nationalist Era”

Category	Project Title	Leader	FY2022	FY2023	FY2024	FY2025	FY2026	FY2027	FY2028
Ethnicity and Museums	Challenges for Museums in the Era of Post-Nationalism: Methods of Exhibiting Minority and Indigenous Cultures	SUZUKI Motoi	April 1, 2022–March 31, 2025						
Ethnicity and the Nation-State	Understanding Conflicts Involving the Wills and Intentions of Individuals, Affiliate Groups, and the Nation-State, and the Realization of a Nation-State Comprising Diverse Ethnic and Cultural Groups	NOBAYASHI Atsushi	April 1, 2023–March 31, 2026						
Ethnicity and History	The Politics of Roots and the Arts/Techniques of Coexistence: Ethnicity and Histories in the Post-Nation-State Era	MATSUO Mizuho	April 1, 2024–March 31, 2027						
Ethnicity and Religion	Ethnicities and Religions: The Entanglements of Exclusivity and Inclusivity Political Violence, Conflict, and Ethnicity	NARA Masashi	April 1, 2025–March 31, 2028						
Ethnicity and Violence	Political Violence, Conflict, and Ethnicity	NIWA Norio	April 1, 2026–March 31, 2029						



Project Workshop



Yomitan Village History Editorial Office

Projects in FY2024

Project Leader	Project Title
MATSUO Mizuho	The Politics of Roots and the Arts/Techniques of Coexistence: Ethnicity and Histories in the Post-Nation-State Era
NOBAYASHI Atsushi	Understanding Conflicts Involving the Wills and Intentions of Individuals, Affiliate Groups, and the Nation-State, and the Realization of a Nation-State Comprising Diverse Ethnic and Cultural Groups
SUZUKI Motoi	Challenges for Museums in the Era of Post-Nationalism: Methods of exhibiting minority and indigenous cultures

Minpaku Public Lecture
“Ethnicity and Art Today: The Politics of Beauty”

Date November 8, 2024
Coordinator MATSUO Mizuho
The total number of participants 431



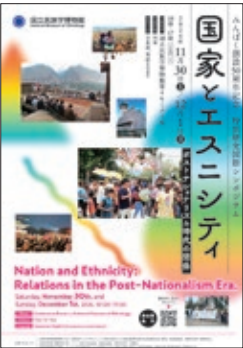
The Symposium of Minpaku Special Research Project for the 50th Anniversary of the Museum’s Founding
“Ethnic Groups and Ethnicity in Post-Nationalist Era”

Date June 29, 2024
Coordinator UDAGAWA Taeko
The total number of participants 68



The International Symposium of Minpaku Special Research Project for the 50th Anniversary of the Museum’s Founding
“Nation and Ethnicity: Relations in the Post-Nationalism Era”

Date November 30–December 1, 2024
Coordinator NOBAYASHI Atsushi
The total number of participants 83



The Workshop of Minpaku Special Research Project for the 50th Anniversary of the Museum's Founding
“Renovation of the Museum as a Forum: What Kind of Dialogues will Museums Attempt in the Era of Post-Nationalism?”

Date October 5, 2024
Coordinator SUZUKI Motoi
The total number of participants 30

Sustainable Development Humanities Research Based on the Info-Forum Archives of Human Culture (Instituted Project of the National Institutes for the Humanities Transdisciplinary Projects) FY2024

An institution-based research initiative, designated as “Sustainable development humanities research based on the Info-Forum archives of human culture,” is aimed at compiling multilingual “archives of human culture.” This broadly disseminates more than a million of the Museum’s academic resources for online public access, by promoting international collaborative research between researcher communities and indigenous communities, known as the bearers of culture. The archives presumably form a core for educational and research activities, that enable the inheritance of academic resources in anthropology, ethnology, and their related fields, as common international properties.

In 2024, the third year of research, we implemented nine projects: four Basic Research Projects and five Promotional Research Projects. In addition, International Symposium of Minpaku for the 50th Anniversary of the Museum’s Founding “Digital Humanities in Action” was held as a result of the international dissemination program to promote the internationalization of research. This is one of the instituted projects of the NIHU Transdisciplinary Project.

Project under Promotion:

1. Basic Research

Basic research specifically examines compilation of the archives, that focuses on the Museum’s cultural resources of artifacts, photographs, videos, and bibliographical materials, as well as related academic materials, with the consistent promotion of collaborative research using archives.

2. Promotional Research

Promotional research disseminates results of international collaborative studies, international symposia, and exhibitions, based on a novel database created using existing databases and platforms, and on the compilation of new archives.

Projects of Sustainable Development Humanities Research Based on the Info-Forum Archives of Human Culture

Project Leader	Project Title	Category	Period
HIRANO Chikako	A Study of the Material Culture of Aboriginal Australians, with a Focus on the Minpaku Collection	Basic research	April 2022–March 2026
NIWA Norio	Building of a Comprehensive Archive on Pacific Collection by Japanese	Basic research	April 2022–March 2026
NAKAGAWA Osamu	Building an Info-forum Archives for Cultural Collections of Europe	Basic research	April 2024–March 2028
ONO Rintaro	Bark-cloth and Basketry in Maritime Southeast Asia and Oceania	Basic research	April 2024–March 2028
KURODA Kenji	A Trans-area Study on the Material-Culture and Cultural Dynamics of Northeast West Asia	Promotional research	April 2024–March 2026
CHE Sohee	Documentation Research on the ‘Attire of the Korean Peninsula’ Database	Promotional research	April 2024–March 2026
MIYAMAE Chisako	Curation of Nordic Commonplace Artefacts at Minpaku Museum’s Collection: Exploring Functional Elegance	Promotional research	April 2024–March 2025 April 2026–March 2027
OKADA Emi	Transdisciplinary Research on the Culture of the Hill Tribes Living around the India-Myanmar Border	Promotional research	April 2025–March 2027
MIO Minoru	Creation of the Photo Data Archives of the Late Chie Nakane, Professor Emeritus of the University of Tokyo	Promotional research	April 2025–March 2027



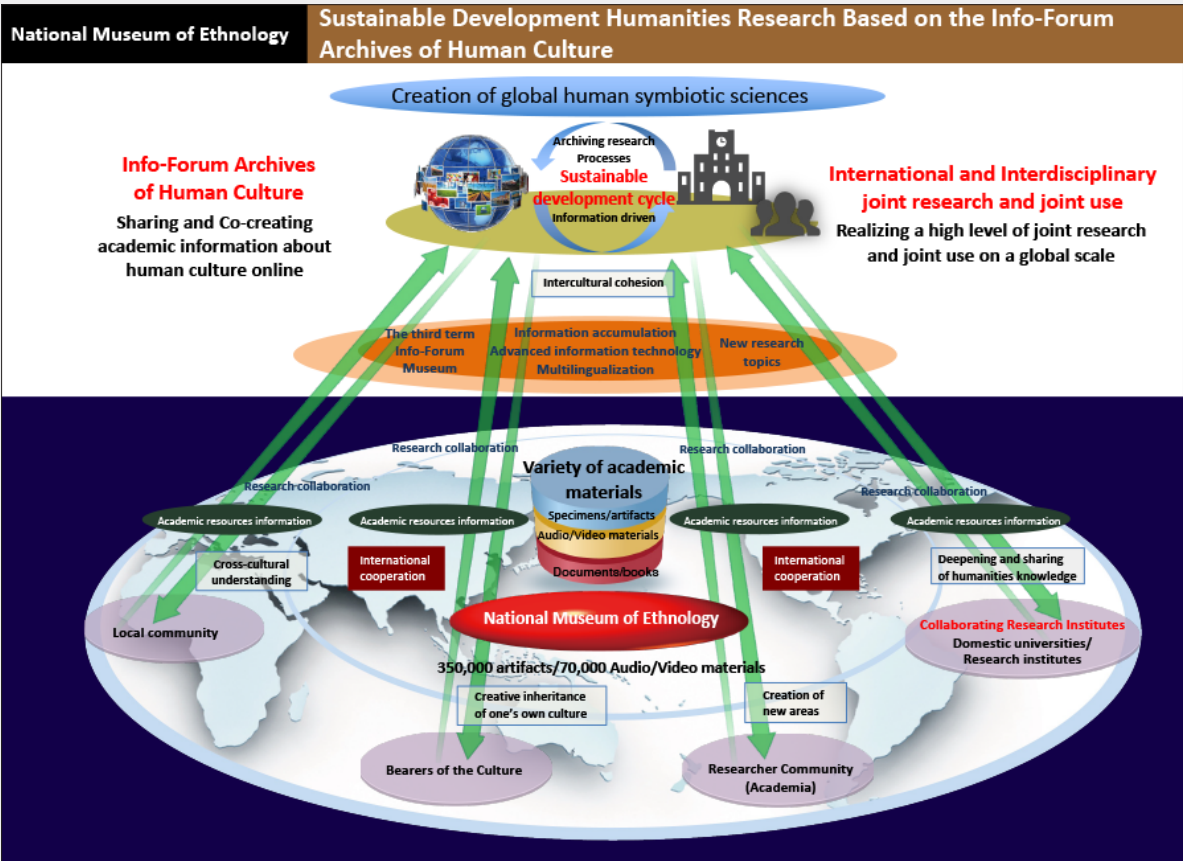
International Symposium of Minpaku for the 50th Anniversary of the Museum’s Founding “Digital Humanities in Action” (November 17, 2024)



Scenes from the International Symposium of Minpaku for the 50th Anniversary of the Museum’s Founding. Methodologies for digitizing accumulated knowledge in the humanities, promoting international sharing, ensuring its transmission to future generations, and pioneering new research were discussed.



Scenes from an International Workshop held in Peru. Local artisans participated, engaging in discussions regarding the current state of folk performing arts and craftsmanship.



Whole structure of “Sustainable Development Humanities Research Based on the Info-Forum Archives of Human Culture”

Examples of databases available on the Minpaku website



“Dances, Songs and Festivals of Amamioshima”
The diversity of regional performing arts and festivals can be explored through videos.



“Archives of the Japan’s First Comprehensive Study of Rice Farming Cultures in Southeast Asia: Photographs of Thailand”
Photographic materials in the museum’s collection can be searched based on categories such as region and ethnicity.

Inter-University Research Projects

These projects are conducted jointly by scholars of the Museum and outside organizations.
In FY2024, projects were jointly undertaken by the Museum scholars and 80 scholars from national universities, 12 scholars from prefectural and municipal universities, 85 scholars from private universities, and 43 experts from other organizations.

FY2024 Research Theme

○ Projects undertaken outside Minpaku

General Research

Coordinator	Research Theme	Research Period
Project 1: New field development		
○ SHIRAI Chiaki	Interdisciplinary Study on Reproductive Technology and Childrearing in Modern Asia	2021.10 – 2025.3
○ DOI Kiyomi	Reorientation of Uncertainty in Tourism	2021.10 – 2025.3
○ TAKEZAWA Shoichiro	The Anthropology of Vulnerability	2021.10 – 2025.3
○ YAMANOUCHI Yuriko	A Comparative Ethnography of Belonging and Difference in Mixed Heritage Peoples: Cases from Indigenous Peoples in Oceania	2022.10 – 2025.3
NAKAGAWA Osamu	Connecting Diverse Logics in Global Capitalism: An Interdisciplinary Approach	2022.10 – 2025.3
○ IKEYA Kazunobu	Migrations and Livelihoods of Asian Hunter-Gatherers: Diversity of Environmental Adaptations in Human History	2022.10 – 2025.3
○ IWATANI Hirofumi	A Methodological Reflection for the Practice of Photo-Ethnography	2023.10 – 2026.3
○ TSUMURA Fumihiko	Anthropological study of magical contingency and communalities	2024.10 – 2027.3
○ SAKURAMA Mizuki	New Cultural Dynamics in the Practices of Non-Western Popular Music	2024.10 – 2027.3
UDA Shuhei	What are birds for the Japanese? T-shaped interdisciplinary approach to the cultural history of bird	2024.10 – 2027.3
UEBA Yoko	An Anthropological Study on Basketry and Lineware from the Perspective of Plant Ecology and Craft Skills	2024.10 – 2027.3
YAMANAKA Yuriko	Ecological Imagination in the Interface of Knowledge Systems	2024.10 – 2027.3
Project 2: Sharing of academic resources		
○ UEMURA Yukio	Reconstruction and Revitalization of Japanese Folk Music through Utilizing the Toyo Ongaku Gakkai Sound Archives Preserved in the National Museum of Ethnology	2021.10 – 2025.3
NIWA Norio	A Study on the Formation and Use of Pacific Ethnographic Collections by the Japanese: Focusing on the Toshio Asaeda Collection of the National Museum of Ethnology	2021.10 – 2025.3
○ OCHIAI Yukino	Research on Historical Changes in Forest Resources and Their Uses Based on the Analysis of National Museum of Ethnology Collection: Focusing on the Wood Materials of Tubs and Barrels	2022.10 – 2025.3
IIDA Taku	Museum Collections and Material Culture Studies: Fifty Years of Minpaku	2023.10 – 2026.3
○ INOUE Toshiaki	A Study on the Use of Northern Dene (Northern Athabaskan) Ethnographic Collection of the National Museum of Ethnology	2024.10 – 2027.3
○ NAKAO Katsumi	Examination of anthropological history based on National Museum of Ethnology archive	2024.10 – 2027.3
Young Researchers		
Coordinator	Research Theme	Research Period
Project 1: New field development		
○ MIYASAKA Shinji	A Project to Touch the Shapes of Tradition by Combining 3D Printing with Traditional Materials and Techniques	2021.10 – 2025.3
○ NAKAO Seiji	How African Narrated “African History”: “African Historiographies” from Local Histories in Africa	2023.10 – 2026.3
Project 2: Sharing of academic resources		
○ DOI Huyuki	History of Oceania Collection and Its Objects in Japan: Focusing on Museum Collections of the University of Tokyo and Minpaku	2024.10 – 2027.3

Public Presentation of Joint Research Results

Since FY2004, some of the Joint Research Project meetings have been made open to the general public.
In FY2024 the following projects were hosted.

Date	Title	Attendance
December 6, 2024	New Cultural Dynamics in the Practices of Non-Western Popular Music	80
December 14–15, 2024	Research on Historical Changes in Forest Resources and Their Uses Based on the Analysis of National Museum of Ethnology Collection: Focusing on the Wood Materials of Tubs and Barrels	56

Visiting ResearchersFY2024

As an Inter-University Research Institute, the Museum accepts researchers, young doctoral graduates, and doctoral students from domestic and overseas academic and research institutions who wish to conduct research activities at the Museum as Visiting Researchers for a certain period of time. Instructors at the Museum are assigned to host such researchers and graduates. Visiting Researchers who meet certain conditions are permitted to apply for Grants-in-Aid for Scientific Research as project coordinators at the Museum. In FY2024, we accepted a total of 67 researchers, including 22 who were non-Japanese from 16 countries and regions.

Visiting Graduate Student ProgramFY2024

The Museum, as an Inter-University Research Institute, accepts students who are enrolled in doctoral courses at Japanese national, public, and private universities. Upon request from their universities, these students may be accepted as Visiting Graduate Student in order to provide them with research guidance on specific themes for a fixed period of time. Visiting Graduate Students can pursue their research under the guidance of Museum scholars, use the facilities, and attend classes at the Anthropological Studies, Graduate Institute for Advanced Studies, SOKENDAI established at the Museum. In FY2024, we accepted two students from national universities, and two from private universities.

JSPS Grants-in-Aid for Scientific Research			
Grants-in-Aid for Scientific Research provided by the Japan Society for the Promotion of Science are intended to foster the progress of unique and pioneering research projects in all fields ranging from the human and social sciences to the natural sciences, in order to promote academic activities in our country. The aid is awarded to research projects which are especially important in terms of current academic trends, organized on the initiative of individual researchers or research groups in academic institutions.			
Organization	FY2025 Projects Funded		
	Category	Head	Research Subject (Thousands of yen)
Research Activities	Grant-in-Aid for Transformative Research Areas (A)(Publicly Offered Research)		
	New	SUZUKI Motoi	Cultural Anthropological Study of the Sustainability of Modern Maya Slash-and-Burn Agriculture 2,600
	New	ICHIKAWA Akira	Plant and Land Use of Ancient Commoners in the Pacific Coast of Oaxaca during Dry and Wet Periods 2,470
			Total 5,070
	Fund for the Promotion of Joint International Research (International Leading Research)		
	Continued	KIKUSAWA Ritsuko	Establishing Spatiotemporal Linguistics: A New Approach to the Interdisciplinary Study of Language History and Human Movement 110,500
			Total 110,500
	Fund for the Promotion of Joint International Research (International Collaborative Research)		
	Continued	MATTHEWS, Peter J.	Giant Aroids as Starchy Food Sources in Asia, Oceania and Madagascar 6,370
			Total 6,370
Joint Use of the Museum	Fund for the Promotion of Joint International Research (Fostering Joint International Research)		
	Continued	ICHIKAWA Akira	Technology, Exchange and Warfare of Commoners during the Classic Collapse of Mesoamerica 11,960
International Cooperation etc.			Total 11,960
	Grant-in-Aid for Scientific Research (S)		
Data Collection	New	NISHIO Tetsuo	Studies on the Mechanism by Which Narrative Manifests Itself in Terms of the Relationship between Language and Music for the Purpose of Constructing Its Development Model in the Human History 43,420
			Total 43,420
	Grant-in-Aid for Scientific Research (A)		
	Continued	ONO Rintaro	Migration and Island Adaptation of Homo Sapiens in Maritime Asia 6,630
	Continued	NOBAYASHI Atsushi	Exploring an Indigenous Society in Early Colonial Taiwan by Joining Ethnographic Archives and Field Research 8,060
	Continued	KONAGAYA Yuki	Reconsideration on Mongolian Nomadism: Focusing on Search for Livestock 4,160
	New	HIDAKA Shingo	Development of the Environmental System for Preserving Cultural Properties Utilizing Traditional Earthen Warehouses and School Buildings 4,160
	New	KISHIGAMI Nobuhiro	Art Creation and Social Change in Indigenous Societies of the Pacific Rim: Focusing on Decolonization 8,710
			Total 31,720
	NIHU	Grant-in-Aid for Scientific Research (B)	
Continued		YOSHIDA Kenji	Anthropological Study of Immergence of Culture in the Midst of Social Crisis in Africa 1,560
Continued		DEGUCHI Masayuki	The Interdisciplinary Researches between Museology and Accounting on the Paradox of Preservation and Measurement of Cultural Heritage 3,770
Continued		YOSHIOKA Noboru	A Descriptive Study on the Domaaki Language 1,430
Continued		TERAMURA Hirofumi	Archaeological Research on the Spread of Religion and Its Acceptance and Transformation in Silk Road Cities 4,160
Continued		SUEMORI Kaoru	Reproduction and Cognition of Polychromatic Visual Arts in Crepuscular Religious Spaces 5,200
Continued		ICHIKAWA Akira	Climate Change, Commoner, and the Classic Period Collapse in Mesoamerica 1,430
Continued		NAGANO Yasuhiko	International Survey of a Tibetan Bonpo Ritual 6,370
Continued		YAMANAKA Yuriko	Ecological Imagination in the Interface of Cultures 5,070
New		MATSUMOTO Yuichi	Research on the Historical Process from the Emergence to the Collapse of Early Complex Societies in the Prehistoric Andes 6,240
SOKENDAI	New	UDA Shuhei	Endangered Breeding Culture of Long-Crowing Chickens: Understanding the Commonality of Animal Use and Co-Creation of Optimal Inheritance Routes 1,820
	New	ISHIYAMA Shun	Comparative Study of Livelihood Changes in Subtropical Oases Village Using Archive Images and Information Technology 6,110
General Information			Total 43,160

Survey and Guide 2025–26

Category	Head	Research Subject	(Thousands of yen)					
Grant-in-Aid for Scientific Research (C)								
Continued	SHISHIKURA Masaya	Transborder Humanity: Traveling Music with Migrating Prostitutes of Karayuki-san	1,040	Organization				
Continued	TAKASHINA Maki	Protection of Traditional Cultural Expressions, Focusing on Photographic Materials of Okinawan Rituals and Access to the Records	1,170					
Continued	HIRAI Kyonosuke	An Ethnographical Study of the Formation, Use and Agency of the Minamata Disease Movement's Archives	1,040					
Continued	NAKAGAWA Osamu	Anthropological Study of the Zucchini Supply Chain	1,170					
Continued	OKADA Emi	Forum-Ethnomusicology on the Polyphonic Singing Culture of the Nagas of Northeast India	1,170					
Continued	KAWASE Itsushi	Building a Model for Cultural Preservation Based on the Production and Use of Visual Ethnography in Africa	1,040					
Continued	NARA Masashi	An Anthropological Study of Exclusivity and Inclusivity in Muslim Communities in Taiwan	1,040					
Continued	TOMITA(KAI) Sarasa	Supporting the Learning of Japanese Sign Language to Enhance Self-Advocacy Skills in Students with Deaf and Hard of Hearing	1,430					
New	KUDO Sakura	An Anthropological Study of Islam and Buddhism in Nepal: Reconciliation, Inclusion, and Indifference	1,560					
New	KURODA Kenji	An Empirical Study on the Development of the Localization and Discourse of Islam in Modern Japanese Religious History	520					
New	SUZUKI Hideaki	Who are the "Africans"?: A Case Study on the Rescued Slaves in the 19th Century Western Indian Ocean	1,040					
New	SAITO Akira	Degeneration and Regeneration of Ethnic Groups in the Frontier Missions of Spanish South America: A Historical Reconstruction Based on Baptismal Registers	1,170					
New	MATSUO Mizuho	The Logic of Naturalisation and Genealogical Imagination of Ethnicity and Race	1,300	Research Activities				
New	ICHINO Shinichiro	Origins of Famine Foods in Madagascar and the Culinary Techniques Employed	1,430					
			Total		16,120			
Grant-in-Aid for Young Scientists								
Continued	HIRANO Chikako	Anthropological Study on the Occurrence and Avoidance of Drinking Trouble in an Australian Nomadic Society	910		Joint Use of the Museum			
Continued	MIYAMAE Chisako	The Succession of Beauty in Practical Crafts: Development Archiving and Exhibition Methods in Design Museums	-					
Continued	SATO Minako	Non-Formal Education Research in the Multilingual Society Kingdom of Bhutan	1,170					
Continued	CHIU Chunni	Inclusive, Co-Curation Museum Activities: A Case Study of the Netherlands' International Heritage Cooperation Program	910					
Continued	YAMAZAKI Nobuko	Research on Urban Development and the Reproduction and Overcoming of Social Stereotypes in Northwestern Uganda Today	650					
Continued	HISAOKA Kae	Research on the Works of Z. Paliashvili (1871-1933): Focusing on Georgian Opera and Sacred Music	1,950					
Continued	MATSUOKA Tomoko	The Normalization of Diplomatic Relations between Japan and South Korea in 1965 and Art Exchanges: Focusing on Changes after Liberation from Japanese Colonial Rule	780					
Continued	KANG Yanggu	Embracing Socialist Reform among the Raglai People in South-Central Vietnam: An Emphasis on Morality and Aesthetics	260					
Continued	FUJII Shinichi	A Study of Displacement and Survival Strategies of Kiribati Migrants in the Solomon Islands during the Ethnic Conflict	1,560					
New	MATSUI Azusa	Proposing Different Experiences of Colonial Rule and the Liberation War in Northern Mozambique	1,040					
			Total	9,230				
Grant-in-Aid for Challenging Research (Pioneering)								
Continued	ITO Atsunori	Museum Anthropological Approach to Develop a Source Community Friendly Public Transmission Model on Digital Image of the "Copyrighted" Ethnographic Collection	4,030	International Cooperation etc.				
			Total		4,030			
Grant-in-Aid for Challenging Research (Exploratory)								
Continued	IKEYA Kazunobu	The Formation of Pig Nomadism from a Synthesis of Genomic Analysis and Ethnography	2,210		Data Collection			
			Total			2,210		
Grant-in-Aid for Research Activity Start-up								
Continued	FURUSAWA Yuria	A Research on Modern Japanese and Asian Christian Art Collected and Exhibited in the West	1,170			NIHU		
			Total				1,170	
Grant-in-Aid for Publication of Scientific Research Results								
New	KURODA Kenji	Islam in Modern Japanese Religious History: An Empirical Study of Localization and Discourse	1,200				SOKENDAI	
			Total					1,200
Grant-in-Aid for JSPS Fellows								
Continued	IKEBE Tomoki	The Emerging Literacy Practices and Wolof Discursive Space in Senegal's Smartphone Era	1,560	General Information				
Continued	YANAGISAWA Eisuke	A Practical Study of the Collaboration between Anthropology and Art: A Case Study on the Creation of a Sonic Ethnography	1,300					
New	NAKAO Yukie	The Development of Social Welfare in East Africa and Migration in the British Empire: Gujarati Muslims and the Question of Modernity	1,430					
New	TANI Kenichi	A Study of Ethnic Identity and Nationalism with a Case Study of Iranian-Azeri	1,040					
			Total		5,330			
*Fund for the Promotion of Joint International Research (Fostering Joint International Research) was allowed between FY2023 to FY2025								

Survey and Guide 2025–26

Individual Research Projects

FY2025 Research Theme

Department of Advanced Human Sciences

ICHINO Shinichiro	1. Research Evaluation and Institutional Research of Ethnological Museum 2. Relationships between Primates and Local People in Madagascar
OKADA Emi	1. Traditional Polyphony and Singing Culture of Naga Tribes in Northeast India 2. Culture of the Hill Tribes Living around the India-Myanmar Border 3. Songs of Bengal: Baul and Patua
KAWASE Itsushi	The Study of the Theory and Practice of Ethnofiction
KIKUSAWA Ritsuko	Conducting a JSPS Funded International Leading Project: Establishing Spatiotemporal Linguistics: A New Approach to the Interdisciplinary Study of Language History and Human Movement
SUEMORI Kaoru	Effects of Polychromatic Visual Art and Combustion Light in a Mesopic Religious Spaces
TAKASHINA Maki	Access to the Okinawan Ritual Photography and Protection of “Traditional Cultural Expressions”
HIRANO Chikako	Anthropological Study on Problem Drinking among Indigenous Australians
HIROSE Koujirou	An Anthropological Study of the Concept of “Barrier-Free”
MARUKAWA Yuzo	Research of Information Service for Cultural Assets based on Informatics of Association
MIYAMAE Chisako	—
YAMANAKA Yuriko	Comparative Study of Marvels and the Uncanny: Human Imagination and the Natural World
YOSHIOKA Noboru	Descriptive Linguistics for Northern Pakistan Languages

Department of Cross-Field Research

ASADA Naoki	The Agency of Romanian Orphans and Human as “Ever-Developing Entity”
IIDA Taku	A Museo-Anthropological Study of Vessels
ICHIKAWA Akira	Environmental Change and Human Adaptation in Ancient Mesoamerica Civilization
OTA Shimpei	Integration and Variation of Socio-Cultures in Korea
KASHINAGA Masao	The Tai Dam Culture in Vietnam and in Laos
HAN Min	Anthropological Research on Society, History and Symbols
NIWA Norio	Practical Anthropological Studies of Digital Return
FUJII Shinichi	Anthropological Research on Peace and Violence
MATSUO Mizuho	A Study of the Logic of Ethnic Naturalization: With a Focus on Eurasians in Asia
MINAMI Makito	Social Transformation in the Dolpo Region of Western Nepal Highlands

Honors and Awards

Award Recipients	Date	Awards
SHIMAMURA Ippei	Awarded on August 1, 2023 (by Presidential Decree) Decorated on June 18, 2024 (at the Consulate General of Mongolia in Osaka)	Order of the Polar Star, Mongolia
HIDAKA Shingo	June 23, 2024	The 17th Japan Society for the Conservation of Cultural Property Grand Award
NOGUCHI Hiroya	March 14, 2025	Poster Presentation Award for Early Career Researchers The Arctic Challenge for Sustainability II (ArCS II) Final Symposium

Department of Modern Society and Civilization

IKEBE Tomoki	An Anthropological Study of the Interaction between Texts and Oral Traditions in Senegal
ITO Atsunori	Rethinking Our Mission and Activities based on “Museum as a Forum”
UEBA Yoko	A Comparative Study of Handicraft Culture
SAITO Akira	Jesuit Missions and Indigenous Ethnogenesis in Moxos, Lowland Bolivia
SHIMAMURA Ippei	Anthropological Studies on Religious Phenomena in Mongolia
SUZUKI Kota	Socio-Historical Research on Japanese Folk Performing Arts
HIRAI Kyonosuke	An Ethnographical Study of the Formation, Use and Agency of the Minamata Disease Movement’s Archives
FUKUOKA Shota	A Study on Influences of Audiovisual Media on Performing Arts
FUJIMOTO Toko	Anthropological Study on Kazakh Religious Dynamics in the Central Eurasian Steppe
MATSUMOTO Yuichi	Chavin and Wari: Archaeological Research on Two Turning Points in the Development of Andean Civilization

Department of Globalization and Humanity

AISHIMA Hatsuki	Aesthetics and Body Culture in Contemporary Egypt
UDA Shuhei	Relationship between Birds and Humans
KURODA Kenji	Self-Other Relationship between Japan and the Middle East
SUZUKI Hideaki	The Western Indian Ocean World as Mobility
CHE Sohee	The Transformation of Korean Society and Gender Through Objects II: On Reproduction and Care
NAKAGAWA Osamu	Ethnographic Study of Capitalism
NOBAYASHI Atsushi	Anthropological Research on the Impact of Ethnicity on Nations
NOBUTA Toshihiro	1. An Anthropological Study on Indigenous Peoples in Malaysia 2. An Anthropological Study on Intellectual Disability and Well-being
MIO Minoru	Anthropological Study on Transformation of Religion and Culture in Western India
YAGI Yuriko	Study on the Changes of Religious Culture in the Andes

Center for Cultural Resource Studies

WINCHESTER, Mark	Historical and Theoretical Research on Modern and Contemporary Ainu Literature, Art, Politics, and Discourse
ONO Rintaro	Study of Island Migration, Subsistence, and Cultural Heritages in Maritime Asia and Oceania
KAWANISHI Eriko	An Anthropological Study of Alternative Spirituality and Religion
SAITO Reiko	Art Creation of Ainu People and Social Change in Japan
TERAMURA Hirofumi	Archaeological Research on the Propagation of Religion and Its Acceptance and Transformation in Silk Road Cities
NARA Masashi	An Anthropological Study of Exclusivity and Inclusivity in Muslim Communities in Taiwan
NOGUCHI Hiroya	Research on Prestige Goods and Social Complexity of Hunter-Gatherer Societies in the North Pacific Rim
HIDAKA Shingo	Building Effective Utilization Models of Local Cultures
MISHIMA Teiko	Anthropological Study on the Plural Significance of Migrant Phenomenon: From the Work Ethics of African Merchant Migrants

Dissemination of Research Findings

Note: Those with no venue cited were held in the Museum.

The Museum promotes active dissemination of research findings, via symposia, research forums, and participation of staff in international academic meetings using the “Research Results Presentation Program” under the Director-General’s Leadership Program. Using various external funds, the Museum has conducted numerous symposia and forums in FY2022 (see below).
For information about Minpaku Special Research Projects symposia and forums, please see p.8. and 9.

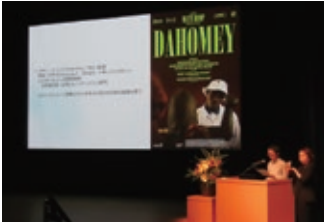
Public Academic Lectures

The Museum organizes public academic lectures in Osaka and Tokyo. These facilitate cross-cultural understanding and help to increase public recognition of the Museum.

Public Lecture

“Ethnicity and Art Today: The Politics of Beauty”

Date	November 8, 2024
Venue	Nikkei Hall (Tokyo) with online streaming
Lecturers	YANAGISAWA Fumiaki SUZUKI Motoi YOSHIDA Kenji
Moderator	MATSUO Mizuho
Attendance	431
Co-host	NIKKEI INC.



Public Lecture

“Anxious Times: How Young Minds Navigate”

Date	March 21, 2025
Venue	Oval Hall (Osaka) with online streaming
Lecturers	SUZUKI Akihito OKUDA Wakana AMO Kae CHE Sohee
Moderator	IIDA Taku
Attendance	350
Co-host	Mainichi Newspapers



International Symposia

The International Symposium of Minpaku for the 50th Anniversary of the Museum’s Founding

“Human and Cultural Heritages from Maritime Perspectives”

Date	May 11–May 12, 2024
Coordinator	ONO Rintaro
Participants	737

The International Symposium of Minpaku for the 50th Anniversary of the Museum’s Founding

“Hakka and Japan: Another History of East Asian Relations Created by Chinese Overseas”
Roundtable Talk “The Hakka in Japan Talk about the Thematic Exhibition”

Date	September 5, 2024
Coordinator	NARA Masashi
Participants	126

International Symposium

“2024 Fiji Language GIS Project Symposium: Scientific Pursuit of Languages in Fiji and Their Social Dissemination”

Date	September 12, 2024
Coordinator	KIKUSAWA Ritsuko
Participants	113

The International Symposium of Minpaku for the 50th Anniversary of the Museum’s Founding

“Art, Anthropology and Museums: Past, Present and Future”

Date	March 1, 2025
Coordinator	YOSHIDA Kenji
Participants	390

The International Symposium of Minpaku for the 50th Anniversary of the Museum's Founding

“Museums in the 22nd century: Designing the Museums of Tomorrow as Future Spaces for Communication”

Date	March 8–March 9, 2025
Coordinator	MIYAMAE Chisako
Participants	439

Workshop

“The World of Mexican Animal Wood Carving: How Colorful Folk Art has Developed”

Date	March 16, 2025
Coordinator	SUZUKI Motoi
Participants	78



Publications by the Museum

Bulletin of the National Museum of Ethnology

The Bulletin of the National Museum of Ethnology is a research journal that contribute to the advancement of ethnic studies and cultural anthropology. It publishes articles, book reviews, documentary materials, and research notes related to ethnic studies, anthropology, and related fields. Published four times a year.

Vol. 48, No. 3	Article SAITO Akira, Crisis de la década de 1690 en el Moxos jesuítico: Una reconstrucción histórica con base en un epistolario misionero de la Biblioteca Nacional del Perú Research Notes NOBAYASHI Atsushi, Indigenous Peoples Status in Taiwan: A Preliminary Study on the Unconstitutional Decision of the “Status Act for Indigenous Peoples” KURODA Kenji, Preliminary Consideration of the First Japanese Visitor to Makka: From a Study of Saishi Nakashima’s World Travel and His Account of “Mecca” in 1907
Vol. 48, No. 4	Articles OKADA Emi, Performing, Teaching, and Listening to Ragas in Hindustani Classical Music IIDA Taku, Decolonisation of Ethnographic Museums: Formation of Museum Collections in Europe and Japan
Vol. 49, No. 1	Special Theme Naturalizing Cultural Anthropology NAKAGAWA Satoshi, Introduction: Four Ways to Naturalize Anthropology Articles HAMAMOTO Mitsuru, Certain Obstacles to Naturalization in Cultural Anthropology: Past Debates and Beyond IIDA Taku, Marginal Psychology of Search and Reasoning: Bridging Affordance and Relevance Theories TAKADA Akira, Acting like Others: Analysis of Caregiver-Child Interactions among the !Xun NAKAGAWA Satoshi, Pleasure of Cheating: When Art Was Born Research Resource NISHIO Tetsuo et Naoko OKAMOTO, Second voyage de l’Histoire arabe de Sindabad Le Marin par François Pétis de La Croix: Traduction japonaise et annotations
Vol. 49, No. 2	Articles UDA Shuhei, Techniques for Preserving and Improving Long-crowing Chickens in Japan: A Case Study of the Tomaru in Niigata Prefecture and Koeyoshi in Akita Prefecture KAWANISHI Eriko, Mediating Those on Earth and Those in Spirit: Interaction between Mediums and Spirits in the Contemporary UK

Senri Ethnological Studies (SES)

Senri Ethnological Studies presents individual works, article collections, and annotated bibliographies regarding specific peoples, regions, or themes, with the goal of publicizing in Japan and overseas the results of research conducted by the Museum. An occasional publication.

No. 113	IKEYA Kazunobu, Sedentarization and Subsistence Strategies among the Botswana San: Mobility and Lifeway Transitions (1929–2010)
---------	---

Senri Ethnological Reports (SER)

The purpose of Senri Ethnological Reports is to publicize as quickly as possible the results of research conducted by the Museum’s faculty, cooperating faculty, and research fellows. SER publishes the results of field investigations regarding specific peoples, regions, or themes that require preliminary reports, as well as items of a source material nature such as bibliographies and data collections. Published in Japanese and other languages. Occasional publication.

No. 157	YASUGI Yoshiho, The Title of Totonicapán
---------	--

TRAJECTORIA

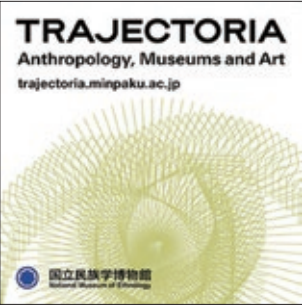
TRAJECTORIA is an international multimedia peer-reviewed journal situated at the intersection of anthropology, heritage studies, museum studies, and the arts. It is published annually online by the National Museum of Ethnology.

Vol. 6	Film SCHAAF Suzanne, The Memory of Glitch Special Theme Landscape Memories, Archival Ecologies DOUGLAS Lee, Introduction: Histories of Extraction, Toxicity, and River Ghosts on and Beyond the Page CAZENAVE Alice, Parallel Archives: Photographic Silver & Its Landscapes DE ALMEIDA Beatriz, A Complicated Portrait of the Portuguese River Paiva: A Photo-Essay BORDOLI Andrea, Remediating Visual Extractivism and the Geological Archive: Multimodal Perspectives from Subarctic Québec Carte Blanche VAN LANCKER Laurent, Why ? As an Intention Scheme
--------	---

Minpaku Tsushin Online

Minpaku Tsushin Online is a magazine that describes the academic characteristics and unique features of and achievements resulting from individual research projects conducted at the Museum in a manner that is comprehensible to researchers and the general public. The magazine launched online publications in FY2019 and has published electronic books.

No. 10	Final Report NIHU Transdisciplinary Project Research Based on Info-Forum Museum of Folk Performing Arts in Tokunoshima and Amamioshima and Production and Release of Multimedia Contents and Exhibitions SASAHARA Ryoji, Overview of the Info-Forum Archives of Human Culture on the Performing Arts and Festivals in Tokunoshima and Amamioshima NIHU Transdisciplinary Project Construction of Archives of the First Synthetic Research of the Culture of Rice-Cultivating Peoples in Southeast Asian Countries: Focusing on Photographs of Thailand HIRAI Kyonosuke, Constructing a Digital Photographic Archive: Data Verification and Follow-up Research NIHU Transdisciplinary Project Building an Integrated Digital Archive of Taiwan Studies NOBAYASHI Atsushi, Anthropological Research in Taiwan, a Digital Archive Powerhouse
--------	---



	Minpaku Special Research Project Family Potential in Uncertain Times: Mobility, Technology, and Body MORI Akiko, Capturing the Fluidity of Family Beings and Their Adjustments Minpaku Special Research Project A Comparative Studies on the Cultural Immune Systems against COVID-19 SHIMAMURA Ippei, How Have Human Beings Coped with the COVID-19 Pandemic? Inter-University Research Project A Study on the Transformation of Food/Foodways Related to Wars and Imperialism: Rethinking the Relationship between Food/Foodways and the Nations UDAGAWA Taeko, Food as an Instrument of Citizen-Making Inter-University Research Project Toward a New Perspective for Japan Studies Reflecting Overseas Field Experiences KATAOKA Tatsuki, Japan in “Reverse Reading of Ethnography”: An Attempt for Anthropology Back Home Inter-University Research Project Interdisciplinary Comparison of Historical Change, Current of State, and Future of Indigenous Societies along the North Pacific Rim: From a Perspective of Human History KISHIGAMI Nobuhiro, Toward a Comparative Study of Indigenous Societies in the North Pacific Inter-University Research Project Comparative Study on the Influence of International Development on Menstruation: From the Perspective of Gender and Medicalization SHINMOTO Mariko, Toward Anthropology of the Menstruating Body Inter-University Research Project Exploring an Alternative Notion of Community in Uncertain Times: Contingent Arrangement of Material, Institutional, and Body Settings MORI Akiko, Writing the Uncertain World as the Event of Place Inter-University Research Project The Anthropology of the “Depicted Animals”: Focusing on the Becoming in Animals and Humans YAMAGUCHI Mikako, Depicting the Affects in the Process of Becoming between Animals and Us
--	--

No. 11	Start Up NIHU Transdisciplinary Project Building an Info-Forum Archives for Cultural Collections of Europe NAKAGAWA Osamu, Developing a User-Centered Database for European Exhibitions NIHU Transdisciplinary Project Bark-Cloth and Basketry in Maritime Southeast Asia and Oceania ONO Rintaro, Basketry and Barkcloth Cultures in Maritime Asia and Oceania NIHU Transdisciplinary Project A Trans-Area Study on the Material-Culture and Cultural Dynamics of Northeast West Asia KURODA Kenji, Beyond Regional Classifications NIHU Transdisciplinary Project Documentation Research on the ‘Attire of the Korean Peninsula’ Database CHE Sohee, A Study of Korean Folk Costumes Centering on Women’s and Children’s Attire NIHU Transdisciplinary Project Curation of Nordic Commonplace Artifacts at Minpaku Museum’s Collection: Exploring Functional Elegance MIYAMAE Chisako, Promoting the Cross-Border Integration and Utilization of Cultural Resource Data Inter-University Research Project What Are Birds for the Japanese?: T-Shaped Interdisciplinary Approach to the Cultural History of Bird UDA Shuhei, Studies on the Cultural History of Birds in the Japanese Archipelago Inter-University Research Project Ecological Imagination in the Interface of Knowledge Systems YAMANAKA Yuriko, When Different Cosmologies and World Views Meet, How Is Knowledge Reconciled? Inter-University Research Project Anthropological Study of Magical Contingency and Communalities TSUMURA Fumihiko, Unreliable Magic in an Uncertain World Inter-University Research Project New Cultural Dynamics in the Practices of Non-western Popular Music SAKURAMA-NAKAMURA Mizuki, Toward Understanding Contemporary Global Culture through Musical Practices Inter-University Research Project A Study on the Use of Northern Dene (Northern Athabaskan) Ethnographic Collection of the National Museum of Ethnology INOUE Toshiaki, Aiming for the Collaborative Use of Museum Collections with Indigenous Communities Inter-University Research Project Examination of Anthropological History Based on National Museum of Ethnology Archive NAKAO Katsumi, Social History of Anthropologists Inter-University Research Project History of Oceania Collection and Its Objects in Japan: Focusing on Museum Collections of the University of Tokyo and Minpaku DOI Huyuki, Let’s Bring the Light to the Collection in Minpaku Research Trends KAWASE Itsushi, Research on Trends in Ethnographic Film Festivals in Britain
--------	--

Publications outside the Museum

ONO Rintaro (ed.), Mortuary Systems in Island Regions: Ryukyuu, Maritime Asia, and Oceania , Yuzankaku
YAMA Yoshiyuki and Tetsuo NISHIO (eds.), The Stranger in Narrative Politics: How We Can Narrate the Otherness in the Age of Intolerance , Rinsen Book Co.
UDA Shuhei (ed.), Japanese History of Cormorant Fishing: 1500 Years of Wild, Power, and Representation , Showado
YAGI Yuriko (ed.), Material Culture Studies of Religion , Shumpusha Publishing
AZUMA Kentaro, Ejirio FUKUI, and Masashi NARA (eds.), The Anthropology of De-tourization: The Changing Future of Tourism and Society , Minerva Shobo
SAGAWA Toru, Hideyuki OKANO, Takamasa OSAWA, and Kazunobu IKEYA (eds.), Who Controls the Space?: The Anthropology of Territorial Governance , Nakanishiya Shuppan
NAITO Naoki and Akiko MORI (eds.), Parasitism as a Way of Life: Anthropology of Politics and Economy on the Margins , Showado

Minpaku Visual Ethnography

Minpaku Visual Ethnography is a DVD series created for research and educational purposes. The contents included visual works recorded during fieldwork. They are distributed to universities and research institutions nationwide and to national and public libraries.

Released in FY2024

Volume 53	MIO Minoru, Gangaur Festival in Rajasthan
Volume 54	SASAHARA Ryoji, Hachigatsu-Odori Dance in Amami Oshima
Volume 55	KAWASE Itsushi, Living in Connection: Ethiopians in Tokyo

Minpaku Repository

By using NII’s (National Institute of the Information) institutional repository system, the Minpaku Repository, which includes in its holdings Minpaku’s own publications, allows an open access to Senri Ethnological Studies, Senri Ethnological Reports, the Bulletin of the National Museum of Ethnology, Senri Ethnological Research Reports Supplements, Minpaku Tsushin, National Museum of Ethnology Info-Forum Museum, electric journal “TRAJECTORIA”, and authorized theses and dissertations which were published outside of Minpaku. As at the end of FY2024, the total number of publications in the repository was about 6,406. The average number of paper downloads was about 83,429 per month.



Joint-Use Facilities for Scientific Research

Purpose of Establishment

The museum has nondestructive testing and material analysis equipment systems to conduct primary analysis of folklore materials, cultural assets, and museum materials. The facilities was established in December 2017 to promote the active use of the systems by various organizations and researchers in cultural anthropology and relevant disciplines in its peripheral domains thereby contributing to increased joint use in scientific researches.

List of Equipment

- X-ray CT scanning system
- 3D printer
- Three-dimensional measuring system
- Pyrolyser gus chromatograph - mass spectrometer
- Ion exchange chromatograph
- X-ray fluorescence spectrometer
- Temperature and humidity chamber
- Fourier transform infrared spectrophotometer (FT-IR)
- Digital microscope



X-ray CT Scanning System



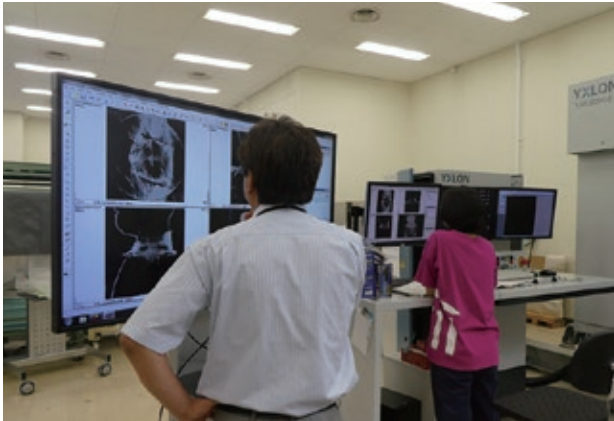
3D Printer

Records of Use

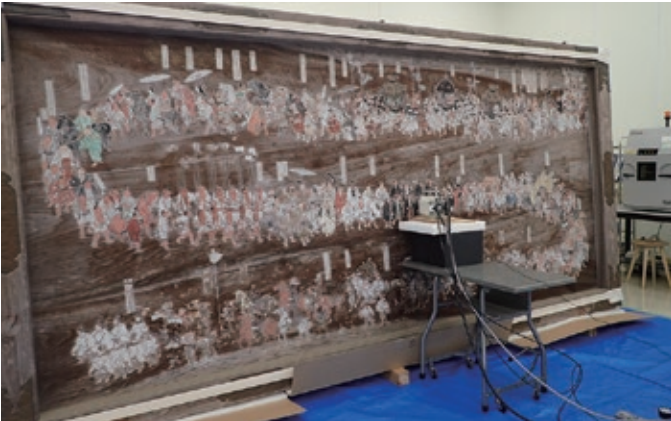
Records of Use	Organizations That Used the Facilities
17 cases	Kobe University, Otsu City Citizen Affairs Department Cultural Properties Protection Division, Kawasaki City Museum, Ootoy Town Board of Education, Kesennuma City Board of Education, Murakami City Board of Education, Asahiyama Preservation Society, Daitoku-ji Temple, Nou Hakusan Shrine, MITSUWA FRONTECH CORP., Oka Bokkodo Co.,Ltd, WORDSPRING.inc, etc

Records of Use	Organizations That Used the Facilities
20 cases	Japan Center for International Cooperation in Conservation, Samarkand Institute of Archeology, Nara Prefectural Museum of Folklore, Handa City Museum, Nobeoka Castel/Naito Memorial Museum, Kijiya Folklore Museum, Kesennuma City Board of Education, Murakami City Board of Education, Daitoku-ji Temple, Muryo-ji Temple, Nou Hakusan Shrine, Oka Bokkodo Co.,Ltd, etc

Records of Use	Organizations That Used the Facilities
18 cases	Japan Center for International Cooperation in Conservation, Kyoto University of the Arts, Nara Prefectural Museum of Folklore, Kawasaki City Museum, Otsu City Board of Education, Kami Town Board of Education, Kesennuma City Board of Education, Murakami City Board of Education, Daitoku-ji Temple, Muryo-ji Temple, Nou Hakusan Shrine, Nawa Shrine, Oka Bokkodo Co.,Ltd, etc



Examination Using X-ray CT Scanning



Examination Using X-ray Fluorescence Spectrometer

How to Use

Please contact the Artifact Management Unit of the Information Planning Section if you are interested in using the systems.

Artifact Management Unit of the Information Planning Section

TEL +81-6-6878-8392

FAX +81-6-6878-8242

Mail hyohons@minpaku.ac.jp

Minpaku Library

Service Information

Daily from 10:00 a.m. to 5:00 p.m.(Entry permitted until 4:30 p.m.), except Sundays, National Holidays, and days that the Museum is closed.

Visitor qualifications: The library is open to all. Visitors (over 18 years old) can borrow books. (The library card is required.) Some materials may not be available.

URL <https://www.minpaku.ac.jp/sharing/library>

1. Encouraging Educational and Research Activities

Minpaku’s library collection includes many highly specialized works. Facilities include four microfilm readers and a color copy service. The library is staffed by qualified librarians and provides full support for the educational and research activities expected of an Inter-University Research Institute.

2. Promoting Public Access to the Library Catalog through the National Institute of Informatics

In FY2024, printed materials in 21 languages were cataloged, and the repository’s holdings reached 633,629 volumes.

3. Social Contributions

All users can check out books from the library. As of FY2024, the library had 214 outside registered users making regular use of the library, who borrowed 1,101 items.

4. MINPAKU Library Catalog

The library catalog is open to the public and can be searched by anyone, anywhere from a personal computer or mobile phone.



Library Reception Counter



Current Periodicals Section

Research Archives

Since its establishment, the Museum has accumulated a wide range of resources, like research notes and papers of anthropologists and ethnologists, including audio-visual records from their fieldwork. To make good use of these materials, the Archives group under Information Management Committee continued in FY2023 to investigate the condition of archive resources and to develop inventory lists. The Museum will investigate continuously the condition of archive resources and develop and digitalize inventory lists, with the aim of making them open to public.

- AOKI Bunkyo Archive
 - ISHIGE Naomichi Archive
 - IZUMI Seichi Archive
 - INADA Koji: Japanese Folktales and Their Related Materials Archive
 - IWAMOTO Kimio Archive
 - UCHIDA Isao: East Asian Culture Archive Mainly for Taiwan and Japan in 1930s
 - UMESAO Tadao Archives
 - EGUCHI Kazuhisa: AfricaAsia Language Archive
 - OUCHI Seiko Archive
 - OKI Morihiro Archive (Indian Ethnological Cultural Resource Archive)
 - KATSURA Yonenosuke Archive
 - KANO Tadao Archive
- KIUCHI Nobuyuki Archive
 - KIKUZAWA Suelo Archive
 - KITAMURA Hajime Archive
 - KURITA Yasuyuki and BEFU Harumi: Japanese Gift-giving Archive
 - KOBAYASHI Yasuyoshi: Southern Taiwan Indigenous People Archive
 - SHINODA Osamu Archive
 - SUGIURA Kenichi Archive
 - The Japanese Scientific Expedition for Nepal Archive
 - HIJIKATA Hisakatsu Archive
 - MABUCHI Toichi Archive
 - MARUTANI Akira: Kutsuki Village Harihata Life Data Archive
 - “Regional Typology of Japanese Culture Study Group” Archive



Neatly Archived Materials

Materials

Items in the Museum Collections Offered for Loan FY2024

In addition to using the items in its collection for internal research activities, the Museum offers items for loan to universities, other museums, and external organizations for educational and research purposes as part of its efforts to contribute to the public interest. To inquire about borrowing items from the Museum’s collection, contact the Minpaku Collections Help Desk.

A total of 237 inquiries were received during FY2024.

Minpaku Collections Help Desk

TEL/FAX +81-6-6878-8213

URL <https://www.minpaku.ac.jp/sharing/guide/helpdesk>

1. Number of Loans Made: 10, Number of Items Loaned: 472

Among the projects listed above, those for which the Museum’s lending resources comprise more than 50% of the entire exhibit items are the following:

Borrower	Exhibition Title	Loaned Items	Exhibition Period	Items Loaned/Total Number of Items Loaned, % of Loaned Items Relative to the Entire Exhibition
Yonago City Museum of Art	“KENJI SATO WONDER/MICROCOSM”	Ghanaian coffin etc.	April 7–May 26, 2024	9 items/9 items, 100%
Oita City Art Museum	“KENJI SATO WONDER/MICROCOSM”	Ghanaian coffin etc.	June 28–September 23, 2024	9 items/9 items, 100%
National Ainu Museum	Special Exhibition “REGNUM IMAGINARIUM: Realm of the Marvelous and Uncanny”	National Museum of Ethnology Special exhibition held in 2019. Related Documents”	September 14–November 17, 2024	328 items/520 items, 63%

2. Number of Special Loans (i.e., Loans for the Purpose of Photo-shooting, Close Examination for Research or Loan of Original Film): 71, 1,527 items

Of the above, 12 loans were made to universities for the use of photographs as references for survey research and writing, 12 were made to museums for the use of photographs in survey research and exhibitions.

3. Number of Loans of Audio-Visual Materials: 142, Number of Items Loaned: 10,854

Of the above, 54 loans were made to universities (1,792 items), and 33 loans to individual researchers and research groups (1,668 items).

4. Books and Periodicals

Inter-Library Loan
Photocopy Outbound: 4,116 (of which 3,214 were copied in the library) / Photocopy Inbound: 348
Book Loan Outbound: 363 / Book Loan Inbound: 207

Use of original film or photo-shooting: 9
(of which 6 was for the use of photos as references for survey research and writing)

5. Research Archive Materials

Number of browsing instances: 49
Number of instances of special utilization: 13

Storage of Academic Materials

The Museum has accumulated a large collection of academic materials through its research. Many of the materials are organic artifacts that generally have the least resistance to insect and fungus damage. Therefore, the Museum takes special measures to repel and kill insects and protect its collection. For example, newly acquired artifacts from abroad are taken to a fumigation chamber where they are treated with chemical insecticides and germicides, because the natural environment and ecosystem of their place of origin are substantially different from those of Japan. Artifacts that have insect damage in Japan, however, are subjected to a non-chemical insecticidal process as required, due to the nature of the materials. In this way, different insecticidal processes are used, depending on the place of origin, the extent of damage, and the nature of the materials. To enhance insecticidal efficiency and better protect artifacts from insect damage in a unique way, in 2007 a large high/low temperature walk-in treatment chamber was installed in the Museum and the existing fumigation chamber was upgraded to a multi-functional chamber capable of carbon dioxide treatment and low oxygen concentration treatment. Also, a catalytic combustion type chemical abatement system was introduced to ensure the safe treatment of waste chemicals, thus realizing a materials management system that is friendly to people, artifacts, and nature.

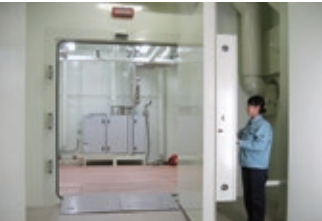
These state-of-the-art systems are one of the results of the research on the conservation science of artifacts that the Museum and other university researchers have been jointly conducting to ensure effective use of its artifact collection.



Artifact Storage Area



The High/Low Temperature Walk-in Treatment Chamber



A Multi-functional Fumigation Chamber Capable of Carbon Dioxide and Low Oxygen Concentration Treatments

Utilization of Minpaku for University Students and Faculty Members

We have established a system to encourage wide-ranging utilization of our research outcomes, exhibits, archived resources, cultural and academic information and facilities, for university education and research.

URL <https://www.minpaku.ac.jp/teacher/university/manual>

Utilization of Exhibition Halls for Lessons

If you wish to use the Exhibition Halls for a lecture, seminar or official event (such as an orientation meeting for new students) of your university under the supervision of a faculty member, we will waive the admission charges, if you apply before the event.

If a faculty member can not supervise the event, or if a professional or specialized training college wishes to use the Museum for a specialist training course, the admission charges will be discounted upon presenting the syllabus or any document that describes the syllabus content.

Use of the Library

We have approximately 700,000 books and other media resources that focus mainly on cultural anthropology and ethnology. We encourage visits to the Library as a part of university education.

Use of Artifacts and Resources

We have approximately 347,000 artifacts and resources collected from all over the world. The objects held at Minpaku are available for investigation, photography, and image use in lessons and research.

Use of Audio-Visual Materials

We have approximately 73,000 Audio-Visual Materials from all over the world, including those produced by Minpaku. You can view about 632 Videotheque Programs on DVD. Some video materials are distributed through online streaming to make them available for online classes.

Use of Databases

An enormous amount of information is provided in our databases for collections and research results.

Development of Young Researchers

“Minpaku Junior Researcher’s Seminar” is regularly held to promote joint use of the museum by young researchers. The two-day seminar consists of a keynote speech by museum faculty and presentation and discussion by participants. Additionally, it organizes library and storage area tours for young researchers to know more about various joint use systems and a facility directory.



Use of Exhibition Halls

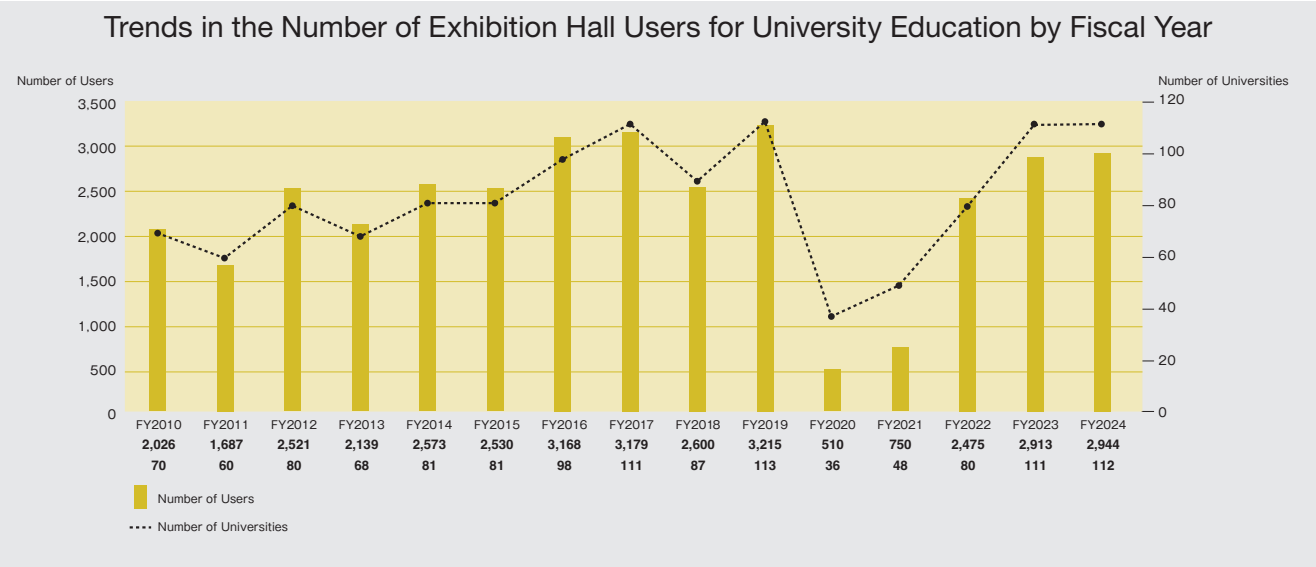


Use of Databases



Minpaku Junior Researcher's Seminar

Records of Use (Free-of-charge Use) 112 Universities, 2,944 users (FY2024)



Exhibitions

Concept and Organization of Exhibitions

At the National Museum of Ethnology, exhibitions are designed to present the latest achievements of anthropological, ethnological and other related scientific research to the public through a variety of media. In doing so, the Museum hopes to enhance public awareness of different cultures around the world and foster greater cross-cultural understanding. The exhibitions consist of Main Exhibitions and the Special Exhibitions. The Main Exhibitions are mostly permanent, and are designed to deepen understanding among visitors of cultural diversity and commonality. The Special Exhibitions, on the other hand, highlight specific topics and are held several times annually for a limited period of time.

Main Exhibitions

The Main Exhibitions are arranged into regional and cross-cultural exhibitions. The regional exhibitions cover Oceania, the Americas, Europe, Africa, and Asia, including Japan. The regional exhibitions start with Oceania, and progress as if traveling eastwards around the world to finish in Japan.

This arrangement allows visitors to view Japanese culture in comparison with other cultures. In designing the exhibitions, the National Museum of Ethnology adhered to the notion that all human cultures around the world have equal value; the notion has remained unchanged since the inception of the Museum. Accordingly, the exhibitions are designed to help visitors respect cultural differences among peoples, represented in the rich diversity of human lifestyles. These exhibitions are also characterized by their emphasis on clothing, food and housing, which gives visitors a clear idea about lives in different regions around the world. The cross-cultural exhibitions, on the other hand, focus on specific themes, not regions, and currently accommodate exhibitions on music and language.

Given the substantial changes of the social and cultural situation in the world since Minpaku’s opening in 1977, the Museum has been renovating its exhibitions since FY2008, and it has completed in FY2016.

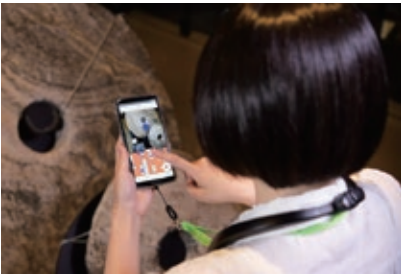
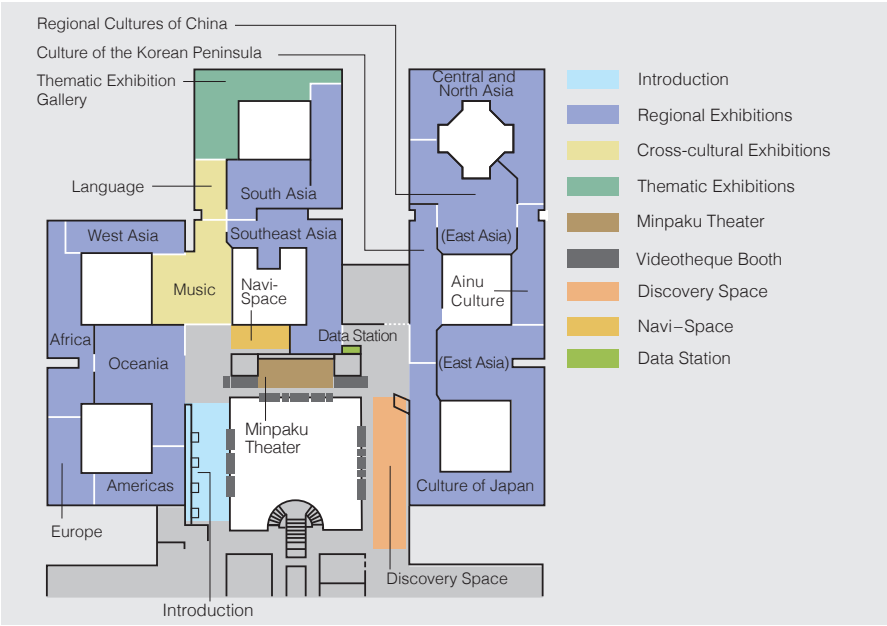
In the Thematic Exhibition Galleries in the Main Exhibition Hall, temporary exhibits display themes related to contemporary issues and cutting-edge research. Other individual themes are also presented.

These Thematic Exhibition Galleries can also be used as a shared exhibition gallery to expedite displays of the latest research trends of universities and other institutions in Japan and overseas.

The Museum encourages the introduction of information devices into its exhibits.

One such device is the Videotheque. As the world’s first on-demand video library of its kind, it was developed by the Museum when it opened its doors to the public. Video programs provide visitors with glimpses of the living cultures of the world’s peoples and let them see how the artifacts shown in the Main Exhibition Hall are actually used. The system allows visitors to select a video program from the Museum’s collection, which now contains 860 titles. In FY2022, the Minpaku Theater was established for visitors to become more immersed in the images. A booth exists to facilitate the visualization of dynamic videos for a large group of people on a large screen, along with booths allowing a small group of people to observe images comfortably on a large monitor.

The second example of information devices held by the Museum is the Minpaku Digital Guide, which was developed in 1999 as the world’s first portable audiovisual device using videos and audios to describe exhibits. The Minpaku Digital Guide provides various types of information, such as how the exhibited items were used, where they were used, and by whom. The Minpaku Digital Guide was renewed in 2020 as a system equipped with new functions such as guidance for museum facilities and a link with the Videotheque. Now, the system allows visitors to watch videos describing the exhibits on smartphones while checking their locations on the explanatory hall map displayed in their hand. By scanning a 2D code, the system automatically links to Videotheque programs related to the exhibits the visitor has viewed. These videos have been translated into multiple languages. Of 860 programs in the Videotheque, 561 programs, in addition to 330 programs in the Minpaku Digital Guide contents, were machine-translated into seven languages based on English subtitle data. Consequently, viewing is now possible in nine languages.



Minpaku Digital Guide
This guide describes facilities and exhibits in the Exhibition Halls using the museum map. It shows videos and information related to the locations artifacts were found, how they were used, and by whom they were used. Explanations are currently available in nine languages, including Japanese, English, and Chinese.

Regional Exhibitions

The regional exhibitions focus on Oceania, the Americas, Europe, Africa, West Asia, South Asia, Southeast Asia, Central and North Asia, and East Asia. The figures appearing next to each exhibition space’s name indicate the exhibit area in square meters.

Oceania 660m²



Human Dispersal into Oceania **Living off the Sea** **Living on Islands**
Contact with the Outside World **Expressions of Indigenous Identity**

In Oceania, tens of thousands of islands, large and small, are scattered across the surface of the ocean. The islands are inhabited by peoples who grow root and tree crops and are highly skilled in the arts of seamanship and navigation. In the sections “Human dispersal into Oceania”, “Living off the Sea”, and “Living on Islands”, we explore the diverse techniques developed to survive in island environments with limited resources. We also examine how indigenous cultures have been affected by encounters with the outside world in the sections “Contact with the Outside World” and “Expressions of Indigenous Identity”.

Europe 250m²



Agriculture and the Annual Cycle **Religions and Beliefs**
Industrialization **Europe in Transformation**

From the 16th to the 20th centuries, Europe was the center from which Christianity and modern institutions, technologies, and knowledge spread around the world. Now the tide has turned, and immigrants from all over the world are making themselves part of European society. Here we explore the interactions of tradition and religion, rationalization and industrialization, and immigration in the formation of modern Europe, focusing on the concept of “time”.

The Americas 320m²



Encounter **Eating** **Clothing**
Prayer **Creativity**

The vast expanses of the Americas range from polar regions to tropical rain forests and encompass a huge diversity of natural environments. Peoples adapting to these environments developed distinctive lifeways. Then came conquest and colonization by European peoples, with foreign influences permeating everyday life. Here our focus is on clothing, diet and religion. While clarifying the relationship between their underlying diversity and historical influences, we also draw attention to traditional artists and craftmakers who creatively combine tradition with modern values in their works.

Africa 500m²



Excavating History **Urban Life** **Work**
Adornment **Prayer**

Africa, the birthplace of humanity, has gone through profound changes and has always been tied to the outside world. The diversity of cultures and languages that we see in the African continent today is the result of these changes. In this exhibit, we introduce the way in which people live in Africa today, focusing on four different aspects—‘urban life’, ‘work’, ‘adornment’ and ‘prayer’. We also look at the efforts people are making to rediscover their history. We hope that this exhibit fosters renewed understanding toward the people of Africa, who live in the same present as we do.

West Asia 310m²

Religion
Living in the Desert
The Palestinian Diaspora
Coffee as Global Culture
Sound Culture and Pop Culture



The people of West Asia, or the Middle East, call their land in Arabic *mashriq*, ‘the land of the rising sun’. Historically, they have kept close ties to the *maghrib*, ‘the land of the setting sun’, that is, North Africa. These regions consist mainly of dry lands inhabited by nomadic peoples. At the same time, urban cultures flourished in large cities such as Baghdad and Cairo. Islam is the majority religion in West Asia, but this region is also the cradle of Judaism and Christianity. This gallery highlights religious practices, nomadic life, women’s dress, and music and dance to show how global change has reached the lives of people in West Asia.

Southeast Asia 730m²



Subsistence
Everyday Life in a Village
Urbanscapes
Entertainment and Recreation

Southeast Asia is encompassed by forests and seas. The climate is tropical to subtropical; people start work early in the morning, and return home and nap in the middle of the day when temperatures can approach 40°C. In the evenings and after squalls have passed, temperatures start to fall. People go out to shop or go back to work in their fields. In the cool of the evening they relax, head to outdoor stalls for meals with friends or family, or relax and enjoy traditional performing arts. The theme of this exhibit, which introduces a rich variety of ethnic cultures, is “A Day in the Life of Southeast Asia”.

South Asia 600m²



Religion—Tradition and Diversity
Urban Popular Culture
South Asia on the Move
Ecology and Subsistence
Tradition and Trends in Textiles

South Asia extends from the mountain ranges in the north, to the Arabian Sea in the west, and the Bay of Bengal in the east. In this region there is a vast range of natural environments inhabited by peoples with an enormous diversity of religions, cultures, and ways of life. Wisdom of coexistence developed over the centuries, and, despite rapid industrialization, is preserved to this day. This gallery exhibits a diverse array of religions, livelihoods and crafts, together with new forms of popular culture emerging primarily in urban settings, and the booming textile culture in the midst of globalization.

Central and North Asia 710m²



Living with Nature
Mongolia
Siberia and the Arctic
The Socialist Era
Central Asia

Central and North Asia is an immense region occupying the northeast of the Eurasian continent. It has long been a crossroads for interactions linking east and west, north and south, where many diverse peoples have mingled. After undergoing socialist rule during the twentieth century, the region has shifted to market economies. Caught up in the wave of globalization, traditions are being reevaluated. This exhibit has three sections on “Central Asia”, “Mongolia”, and “Siberia and the Arctic”, along with two sections accentuating the key themes of “Living with Nature” and “The Socialist Era.”

East Asia Culture of the Korean Peninsula 330m²



Spiritual Worlds
Recreation
Housing
Knowledge
Food
Clothing

The inhabitants of the Korean peninsula developed their own distinctive culture under constant influence from other ethnic groups. Cultural elements adopted from Eastern Siberia in prehistoric times, and later from China, were reworked and domesticated to become distinctively Korean. The result is a culture with a level of integration rarely found elsewhere in the world. In modern times, Korea was colonized by Japan, then split in two after independence and rapidly modernized. In today’s world, Koreans are actively migrating to other parts of the world, and people of Korean descent can be found living outside Korea. Spiritual worlds, everyday life, recreation, and knowledge are the themes of this exhibit, which introduces the multilayered history and energetic character of this culture.

East Asia Ainu Culture 270m²



The Ainu People
Kamuy and Nature
Present and Future

The Ainu are an indigenous people who developed a culture adapted to the cold natural environment of the northern part of the Japanese archipelago, primarily in Hokkaido. Domination by the Tokugawa Shogunate during the Edo period and assimilation during the Meiji period led to discrimination against the Ainu and imposed hardships on them. In recent years, Japan’s government has acknowledged this history and been taking steps that show respect for the Ainu people. Here we introduce the evolving situation of the Ainu, who continue to honor their traditions and strive to create a new and distinct culture.

East Asia Regional Cultures of China 660m²



Subsistence
Crafts
Chinese Overseas
Musical Instruments
Taiwan Indigenous Peoples
Transmission of Chinese Tradition
Zhuang Stilt House
Religion and Writing
Costume

The Chinese landscape is immense and highly diverse in altitude and topography. Its variety of natural environments has fostered a wide range of ethnic cultures. Han Chinese live mainly in the plains and are spread throughout the nation. Ethnic minority groups live for the most part in the highlands or grasslands in southwest, northwest, and northeast China. Taiwan is home to Austronesian-speaking indigenous groups. Chinese overseas are living all over the world. This exhibit introduces the diverse cultures of various ethnic groups shaped by their unique living environments. Taking into account historical and regional characteristics, this exhibit explores livelihoods, costumes, musical instruments, dwellings, crafts, religion and writing, Han Chinese marriage ceremonies and ancestor worship, Taiwan indigenous peoples, and Chinese overseas.

East Asia Culture of Japan 1,460m²



Ritual, Festivals and Performing Arts
Okinawan Lives
Multiethnic Japan
Everyday Life

Stretching from Hokkaido in the north to Okinawa in the south, the long, narrow Japanese archipelago is blessed with a rich variety of ecological niches. The combination of diverse natural environments and contacts with neighboring cultures has resulted in formation of distinct local traditions. In addition, many people from other countries have also come to live in Japan in recent years, adding new elements to the mix. In this section we approach Japanese culture from four perspectives: Festivals and Performing Arts, Everyday Life, Okinawan Lives, and Multiethnic Japan.

Cross-cultural Exhibitions

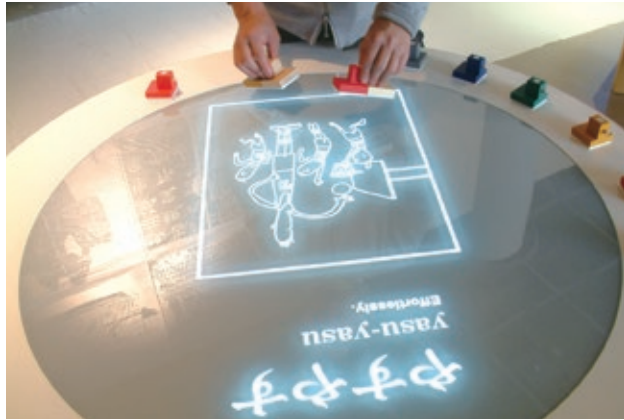
Music 550m²



Drums: A Spirited Sound Gongs: The Sound of Power
Oboe: Performing Sounds Guitar: Sounds in History

Through sounds, we humans convey messages, express emotions, know our surroundings, imagine far away times and places, inspire or console ourselves, and communicate with gods and spirits. With examples from all over the world, this exhibition shows how sounds and music are deeply related to our identity as humans.

Language 170m²



Components of Language
Language Diversity
Writing Systems of the World

Whenever people meet and interact, the need for communication arises and pieces of information are continuously exchanged through various means. Among these, language, shared exclusively by human beings, is a highly developed tool which enables us to express emotional states, describe our deepest thoughts, and to pass intellectual knowledge beyond space and over generations. Language is our irreplaceable heritage, reflecting our diverse cultures and serving as a window for understanding people's cognitive and creative abilities.

Information Zone

Introduction



The exhibits in the Introduction section are designed to enable visitors to experience directly how anthropologists and ethnologists think and how Minpaku exhibits could be explored. Here is where your global journey starts.

Videotheque/Minpaku Theater



Visitors can watch videos about ceremonies, performing arts, and lifestyles of people around the world, or about introducing the background of exhibition materials.
According to their purposes, they can select videos edited in approximately 15 minutes, multimedia programs, and valuable research videos(visual ethnography), that researchers have collected through fieldwork. In FY2022 the Minpaku Theater, was established with a large screen and monitors, to allow visitors to be immersed in the images. (There were 40,522 requests for Videotheque programs in FY2024.)

Discovery Space



Research Desk Deepen Your Knowledge
Voices from the Field Connect to the World
Touch the World Widen Your Perspectives

In the Discovery Space, visitors may search for more information about exhibits at the Research Desk. Materials related to Minpaku researchers' projects can be found at Voices from the Field. Touch the World provides an opportunity to handle as well as see exhibit materials, to gain a deeper understanding of them. Visitors are invited to learn more about the artifacts on exhibit, to satisfy their curiosity about what Minpaku researchers are studying, and to experience artifacts directly.

Special Exhibitions

A Special Exhibition for the 50th Anniversary of the Museum's Founding
"Masks in the Performing Arts and Festivals of Japan"

March 28–June 11, 2024

Organizer: The National Museum of Ethnology
Project leader: SASAHARA Ryoji

Performing arts and festivals featuring masked characters have long been held across Japan. This exhibition emphasized various regions' performing arts and festivals in which masked roles play a striking part. Moreover, it presented the history of masks and the relations between masks and humans, thereby illustrating the diverse connections between people and masks.



A Special Exhibition for the 50th Anniversary of the Museum's Founding
"THE WORLD OF POET-SINGERS"

September 19–December 10, 2024

Organizer: The National Museum of Ethnology
Project leader: KAWASE Itsushi

Poet-singers, traveling widely and performing songs and poetry, have existed since ancient times. They served various roles as narrators of aristocratic genealogies, musicians inspiring soldiers on the battlefield, critics satirizing those in power, jesters, voices of common people, transmitters of news, and itinerant performers. At times, poet-singers were revered with awe. At other times, they were pushed to the margins of society. In recent times, they have survived by transforming both their performance styles and self-image within connections to popular music, consumer society, and cultural heritage preservation movements. The exhibition introduced the performances of Poet-singers and the material culture which sustains them, while also conveying the spirit of the communities that have nurtured them.



Thematic Exhibitions

A Thematic Exhibition for the 50th Anniversary of the Museum's Founding
"Conveying the realities of the Minamata disease"

March 14–June 18, 2024

Organizer: The National Museum of Ethnology
Project leader: HIRAI Kyonosuke

Nearly 70 years have passed since Minamata disease was officially recognized. Today, in the Minamata and Ashikita areas of Kumamoto Prefecture, active efforts are underway to convey the history of Minamata disease, the suffering of its victims, and community development based on lessons from environmental pollution, using exhibitions, guided tours, photographs, and storytellers' talks. Who are the people engaged in these activities? What motivations drive them? How are words, objects, images, and places being used in this process? This exhibition presented an exploration of the appeal of activities that discuss Minamata disease and the possibilities of learning from them.



A Thematic Exhibition for the 50th Anniversary of the Museum's Founding
"Hakka and Japan: Another History of East Asian Relations Created by Chinese Overseas"

September 5–December 3, 2024

Organizer: The National Museum of Ethnology
Project leader: NARA Masashi

Among the overseas Chinese communities is a group known as the Hakka. As they have settled worldwide and have achieved success in politics, economics, and culture, they are sometimes described in China as the "Jews of the East." Since the late 19th century, the Hakka have built close ties with Japan. Particularly when Japan colonized Taiwan in 1895, Japan became a familiar presence for the Taiwanese Hakka. Some Hakka also migrated from Taiwan and other regions to Japan, where they established associations and communities. By specifically addressing the relations between the Hakka and Japan, this exhibition explored a lesser-known aspect of East Asian history.



Traveling Exhibitions

“UNIVERSAL MUSEUM”: Exploring the New Field of Tactile Sensation

July 6–September 16, 2024
Nogata Tanio Art Museum
Project leader: HIROSE Koujirou

A Traveling Exhibition of the Special Exhibition ““Universal Museum”: Exploring the New Field of Tactile Sensation,” originally held at the National Museum of Ethnology in the autumn of 2021, was presented in Nogata. At this exhibition, visitors were able to directly touch widely diverse works and focus on tactile perception (other than vision), thereby raising awareness of the diversity of human senses. By questioning the conventional visual-dominant mode of exhibitions, this universal (inclusive) exhibition transcended the framework of accessibility and support for people with disabilities. It has attracted international attention and conveyed, the infinite possibilities presented by “touch.”



Photographer: KUWATA Chiaki

“National Ainu Museum 9th Special Exhibition REGNUM IMAGINARIUM: Realm of the Marvelous and Uncanny”

September 14–November 17, 2024
National Ainu Museum
Project leader: YAMANAKA Yuriko

In Europe and the Middle East, tales of “the marvelous”—giants, mermaids, and unicorns and other strange beings and phenomena from the edge of the known world—became an important component in the encyclopedic compilations of knowledge about the human and material world. In East Asia, “the uncanny”—anomalous, out-of-the-ordinary beings and incidents—were considered as signs of disturbances in the cosmic order. How have these strange things, which deviate from an instinctive understanding of nature, been recognized, explained, and at times, used as an inspiration for creative works? This exhibition displayed paintings, books, sculptures, and ritual implements, from the collection of the National Museum of Ethnology, with additional content original to the Hokkaido venue, such as the Jomon era chimeric clay figure nick-named “Bibi-chan” (held by the Chitose City Board of Education, Nationally Designated Important Cultural Property), materials related to the “Hokkaido image” created by early colonists, and contemporary illustrations of creatures based on Ainu oral traditions. It invited visitors to enjoy a journey through the labyrinth of human imagination.



Photographer: INAGAKI Satoshi

Exhibitions in 2025

Special Exhibitions

“MINGU Design Expo: Discovering Sources of Wisdom”
March 20–June 3, 2025
Organizer: The National Museum of Ethnology
Project leader: HIDAKA Shingo

“Humans and Boats: Maritime Life in Asia and Oceania”
September 4–December 9, 2025
Organizer: The National Museum of Ethnology
Project leader: ONO Rintaro

Thematic Exhibitions

“Lines and Dots: The Aesthetic Journey of Arabic Calligraphy”
March 13–June 17, 2025
Organizer: The National Museum of Ethnology
Project leader: AISHIMA Hatsuki

“Formosa ∞ Art: Contemporary Indigenous Art from Taiwan”
September 18–December 16, 2025
Organizer: The National Museum of Ethnology
Project leader: NOBAYASHI Atsushi

Traveling Exhibitions

The 62nd Annual Meeting of the Japanese Society of Rehabilitation Medicine (62JARM) Special Program: “What is Language?”
(Jointly organized by the 62JARM Organizing Committee and the National Museum of Ethnology)

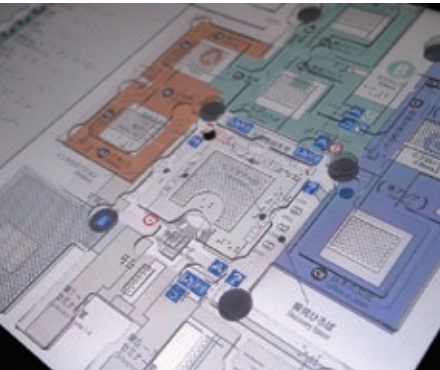
June 12–June 14, 2025
Organizer: Kyoto International Conference Center
Project leader: KIKUSAWA Ritsuko

The Digital Tactile Map

[National Museum of Ethnology Touch Panel Guide]

The digital tactile map, National Museum of Ethnology Touch Panel Guide, is an interactive tactile map that makes information in the museum accessible to people, including for those with visual disability. The finger guide placed on the touch panel display and a voice guide are linked to provide tactile and audio information about the person’s location in the museum and about the exhibitions. Currently, three of these touch panel guides are placed in the exhibition halls of Minpaku.

This digital tactile map was developed in Minpaku’s Cultural Resource Projects. Members who led the design development of this project were Professor HIRAI Yasuyuki of the Graduate School of Design at Kyushu University and Associate Professor FUMOTO Koichiro of the Faculty of Global and Science Studies, Yamaguchi University.



The Digital Tactile Map was Awarded Various Prizes [National Museum of Ethnology Touch Panel Guide]

Data Station

Go on an exclusive virtual museum tour of past special exhibitions and permanent exhibitions captured as a panorama movie, and view a database of artifacts in the Museum’s collection.



WHILL Autonomous Mobility Vehicle

The autonomous mobility vehicle, a single-passenger vehicle designed for exhibition viewing, moves automatically without user operation. As it travels safely along its pre-set route, it allows all visitors, including elderly people and people with disabilities, to use it with confidence. This mobility system was introduced through industry-academia collaboration with WHILL, Inc.



Virtual Museum

A virtual museum is available on the Minpaku website. The Main Exhibition Halls were photographed wall-to-wall using a super-wide-angle camera. Each exhibition hall can be viewed from various angles on a PC or smartphone. Commentary videos are available for some exhibits.



Virtual Museum (Europe exhibition)

JICA Knowledge Co-Creation Program: “Museums and Community Development”

This course, fully commissioned by the Japan International Cooperation Agency (JICA), provides specialists from developing countries with lectures and practice sessions to gain a thorough understanding of the museum’s activities, such as collection, organization, preservation, display, and education. The goal is to foster human resources capable of contributing to cultural promotion through museums in their respective countries.

In FY2024, 9 program participants from nine countries and regions (Egypt, Maldives, Mongolia, Palau, Papua New Guinea, Peru, Seychelles, Sudan and Zambia) were accepted for training from October 3, 2024 to December 19, 2024. Besides implementing training at Minpaku, we also delivered a sequential program at the Lake Biwa Museum, conducted individual training at the Gangoji Institute for Research of Cultural Property, and organized study tours to the Tokyo National Museum, the National Museum of Nature and Science, Intermediatheque, the Hiroshima Peace Memorial Museum and the National Ainu Museum. Furthermore, on November 2, 2024, we hosted the Public Forum “Museums in the World 2024,” an open forum where all trainees reported on and discussed the activities and challenges faced by museums in their respective countries. The forum was held at Minpaku and attended by 63 people.

While the name of the course and its format have evolved, the goal remains unchanged: to promote international interaction and exchange with museums worldwide. During the 31-year history of the course, 305 participants from 66 countries and regions have been accepted. This program will continue to contribute to the expansion of international museology networks.



Public Forum



Lecture at Minpaku (Culture on display today)



Practical training at Minpaku (Preventive conservation)



Study trip to Hiroshima



Ainu folk instrument experience



Closing Ceremony

Minpaku Fellows

This is a network of international researchers who have worked with or for the Museum in the past, and foreign and domestic research institutions with close ties to the Museum. In order to promote awareness and improve information exchange, our English Newsletter (*MINPAKU Anthropology Newsletter*) is published regularly.

Minpaku Fellows Breakdown by Area as of March 31, 2025

Regions	Number of Fellows
Asia, Middle East, Oceania	573
Europe	146
North America, Latin America and the Caribbean	189
Africa	81
Total	989

The Museum has been working to build networks to ensure the more systematic and viable use of cultural resources through academic collaboration with museums and universities, both in Japan and overseas. The Museum is also promoting various projects and activities that benefit local communities and international society, in cooperation with many organizations.

Min-pack

In order to contribute to a better understanding of our research, the Museum has developed a learning-kit for children, called Min-pack. It is lent to schools and other educational institutions. Min-pack is a learning kit carried in a suitcase that contains a variety of materials including clothes, musical instruments, and everyday commodities, of the world’s countries and regions, with children’s learning aids. 21 packs and 12 types are now available.

- Lending period: April 8, 2024–March 12, 2025
FY2024 Number of loans: 166 Total number of users: 22,175
- Treasure Box of the Andes: The Festivals and Life of the Peruvian Southern Highlands
 - Costumes in Java: Religion and Tradition
 - Indian Costumes: Saris and Kurtas
 - The Arabian Nights (until June)
 - Islam and Life of the Arab World
 - Korean Children’s Time: Everyday Life and Tradition
 - Ainu Culture Encounter
 - Expedition to the Steppes of Mongolia
 - The 2011 Umesao Tadao Exhibition: Tools of Knowledge Production (This uses artifacts from the Special Exhibition “Umesao Tadao” held in 2011.)
 - Muslims around the World: Daily Prayers
 - Muslims around the World: Contemporary Life
 - Ethiopian Coffee Ceremony
 - Wearing Ethiopia: the Traditional Clothing of Amhara People



Min-pack
“Expedition to the Steppes of Mongolia”



Min-pack
“Korean Children’s Time: Everyday Life and Tradition”

Workshops

Workshops are organized to introduce the culture of the world through hands-on experiences (crafts) and to share research outcomes of the museum researchers with society.

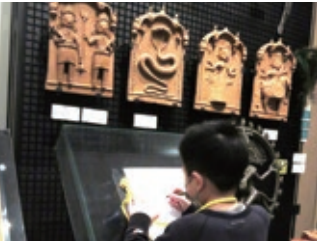
Date	Workshop	Lecturer
July 21, 2024	Kids Workshop for Summer Holiday “Fieldwork Experience: Experiencing Japanese festivals through the five senses”	SUZUKI Kota
September 16, 23, 2024	Workshop Related Thematic Exhibition for the 50th Anniversary of the Museum’s Founding Hakka and Japan: Another History of East Asian Relations Created by Chinese Overseas “Learning Hakka Lifestyle through Making Hakka Tea”	NARA Masashi MATSUMOTO Manabu (Matcha Store) KAWAI Hironao (Associate professor, Tokyo Metropolitan University)
December 22, 2024 January 11-12, 2025	Year-end and New Year Event, “Let’s Find Snakes at MINPAKU!”	Information Planning Section
March 29, 2025	Workshop Related Thematic Exhibition for the 50th Anniversary of the Museum’s Founding, Lines and Dots: The Aesthetic Journey of Arabic Calligraphy “Arabic Calligraphy Workshop 1”	AISHIMA Hatsuki YAMAOKA Koichi (Secretary General, Japan Arabic Calligraphy Association)



“Fieldwork Experience: Experiencing Japanese festivals through the five senses”



“Learning Hakka Lifestyle through Making Hakka Tea”



“Let’s Find Snakes at MINPAKU!”



“Arabic Calligraphy Workshop 1”

The project for building up partnership between the museum and society

To examine the potential for multifaceted use of the museum’s cultural resources in higher education and to assess their educational effectiveness, we planned and implemented collaborative education programs with Konan Women’s University, as well as projects targeting individual university and graduate students. Based on the findings from these activities, a booklet was created and distributed to facilitate the multifaceted use of the museum’s cultural resources by university students, graduate students, and faculty members.

“Minpaku Sama-Sama School”

Envisioning a new museum model providing lifelong learning opportunities for People with Intellectual Disabilities, we have organized the Minpaku Sama-Sama School learning workshop for participants with intellectual disabilities at the junior high school level and above. The program comprises three parts: lectures on world cultures, a quiz rally in the exhibition halls, and art-making activities. In FY2024, it was held 2 times in July and October, with a total of 63 participants.



Booklet

Conducting *Kamuynomi* and Traditional Craft Training with the Ainu Association of Hokkaido

The National Museum of Ethnology carries out two projects under an agreement with the Ainu Association of Hokkaido. The first involves holding a *kamuynomi* rite. *Kamuynomi* is an Ainu term meaning ‘prayer to *kamuy* (spirit-deities).’ Through this ceremony, the Museum seeks both to ensure the appropriate care of its Ainu collections and assist in the handing down of this traditional rite to future generations. In the past, the late KAYANO Shigeru performed the rite in a closed ceremony at the Museum as master of ceremonies. Since FY2007, regional members of the Ainu Association of Hokkaido have conducted public performances combining *kamuynomi* with traditional Ainu dance. In FY2024, the ritual was held in cooperation with the Obihiro Kamuitou-upopo Preservation Society.

The second project concerns the reception of traditional craftspeople dispatched by the Ainu Association of Hokkaido as visiting researchers. This initiative aims to enhance the Museum’s research and utilization of its Ainu cultural collections while contributing to the promotion of Ainu culture more broadly. However, no craftspeople were accepted in FY2024.



The *Kamuynomi* Rite (FY2024)

Music Day at Minpaku

Music Day at Minpaku is a co-creative, citizen-participation event inspired by the spirit of the World Music Day, which began in France in 1982. Irrespective of a performer’s professional or amateur status or musical genre, individuals and groups wishing to perform at the museum were invited to apply, after which performers were selected by lottery. The event was held on Sunday, June 23, 2024, at the National Museum of Ethnology Auditorium. This initiative has become established as a way of opening the museum as a venue for civic activities. Its 21st event was also well received.



Museum-School Partnership Program

To introduce tools that facilitate preparation and learning, before and after using Minpaku as a field trip or an excursion, we provide “Prior Visit Guidance” twice a year in spring and autumn at the Museum, promoting the use of museums in lessons. We also offer junior high school students the opportunity to participate in our “Work Experience Program,” by accepting seven individuals from three schools.

Volunteer Activities

Minpaku Museum Partners (MMP) is a group of volunteers established in September 2004, to assist the Museum in the planning and implementation of its activities.

MMP is promoting a widely various range of activities in cooperation with the Museum, such as “Main Exhibition Hall Guidance for Visually-Impaired Persons” (a program to support them to experience the exhibitions in the hall), “Wakuwaku Taiken at Minpaku” (a hands-on tour mainly for elementary school children), and craft workshops for general visitors. MMP also actively involves itself in workshop festivals and volunteer exchange programs outside the museum to deepen the relationship with other museums and facilities.



MMP Workshop Related to the Special Exhibition “Transformative Experience! Let’s Make Festival Masks”

Performance “West African Story Time”

Wakuwaku Taiken at Minpaku

Main Exhibition Hall Guidance for Visually-Impaired Persons

Experiencing Braille at the Workshop

Minpaku Seminars

On the third Saturday of every month, the Museum’s academic staff and others give lectures in plain language to the general public on the newest research findings.

FY2024 Total Attendance: 2,084

□ indicates seminars associated with special exhibitions ○ indicates seminars associated with thematic exhibitions

No.	Date	Lecturer	Title
□ 544	April 20, 2024	SASAHARA Ryoji	Masks of Japan
□ 545	May 18, 2024	FUKUOKA Shota	Masks of Southeast Asia
546	June 15, 2024	SUZUKI Kota	What is Kagura?: An Attempt at a Functional Analysis Focusing on Word Meaning
547	July 20, 2024	FUJII Shinichi	How to Spend a Civil War: the Conflict Experience of the People of Gadarcanal, Solomon Islands
□ 548	August 17, 2024	MINAMI Makito	“Minstrels” of Nepal: Sharing Visual and Audio Materials with the Source Community
□ 549	September 21, 2024	KAWASE Itsushi	Singing and Storytelling that Differentiate the World: Ethiopian Poet-singers
○ 550	October 19, 2024	KAWAI Hisanao (Associate Professor, Tokyo Metropolitan University) KOBAYASHI Hiroshi (Associate Professor, Yamaguchi University) NARA Masashi	Hakka Vernacular Architectures and Japan
551	November 16, 2024	MATTHEWS, Peter J.	Searching for Taro, Finding the World
552	December 21, 2024	UDAGAWA Taeko	Living in the Local Community: Italians’ Lives in the Midst of Globalization
553	January 18, 2025	KAWANISHI Eriko	Paganism in Europe
554	February 15, 2025	UEBA Yoko	Plant Resources Used in Making Implements: The Case of Basketry
555	March 15, 2025	YOSHIDA Kenji	Constructing a Museum as a Forum for Knowledge: 50 Years with Minpaku, 37 Years at Minpaku



No.546 What is Kagura?: An Attempt at a Functional Analysis Focusing on Word Meaning



No.550 Hakka Vernacular Architectures and Japan



No.555 Constructing a Museum as a Forum for Knowledge: 50 Years with Minpaku, 37 Years at Minpaku

Minpaku Weekend Salon: A Chat with a Researcher

To understand our research better, this event provides an opportunity for the public to talk directly with research institute staff in the Museum’s exhibition hall. The Minpaku Weekend Salon was launched in FY2007 as part of the Museum’s 30th Anniversary project. The Salon was held in a Minpaku seminar room in 2022 to prevent the spread of COVID-19. However, since January 2023, it has been held at the Thematic Exhibition Area and the Special Exhibition Hall, in addition to being held in Navi-Space. In FY2024, it was held 23 times on Sundays, with a total of 1,919 participants.

Special Lectures and Performances

FY2024 Total Attendance: 670

Performing arts of the world’s peoples are staged, with the aim of deepening understanding of cultural anthropology and ethnology among the public.

The performance of *Senbon Enma-do Dainenbutsu Kyogen* at Minpaku

Date	April 14, 2024
Lecturer	SASAHARA Ryoji
Commentator	MIYATA Katsuyuki (Director, Conservation Society of <i>Senbon Enma-do Dainenbutsu Kyogen</i>)
Performer	Conservation Society of <i>Senbon Enma-do Dainenbutsu Kyogen</i>
Attendance	342



Over the Arirang Pass: The Future of Zainichi Korean Musics

Date	August 25, 2024
Lecturer	FUKUOKA Shota
Commentator	Koh Jeongja (Director of the Osaka Korea Town Museum)
Performers	Lee Jeongmi, Ahn Sungmin, Haa Yeongsu, Kim Yongsil, Ryang Songhwi
Attendance	328



Minpaku film shows for the 50th Anniversary of the Museum’s Founding

Valuable films on cultural anthropology and ethnology, hardly available in public, are shown with commentary by researcher.

FY2024 Total Attendance: 2,574

Date	Lecturer	Title	Attendance
May 3, 2024	FUKUOKA Shota SASAHARA Ryoji FUJIOKA Motoshi (Director, Professor at Ritsumeikan University), TOKUDA Tamotsu (Director, Conservation Society of Hassaku Taiko Odori) MURONOSONO Takanori (Superintendent of Mishima Village) SATO Hisataka (Board of Education, Mishima Village)	People and Mendon in Iōjima, Kagoshima	290
June 8, 2024	HIRAI Kyonosuke YOSHINAGA Toshio (Director, General Incorporated Association For-By-With Minamata)	Minamata Revolt: A People's Quest for Life	311
July 13, 2024	NOBUTA Toshihiro SHIMAMURA Ippei	TRIO	Canceled
September 8, 2024	NARA Masashi KAWAI Hironao (Associate Professor, Tokyo Metropolitan University)	The Legend of Formosa in 1895	344
October 13, 2024	HIROSE Koujirou KAYAMORI Naoko (Goze-Uta Player) SAITO Hiromi (Adviser, Goze Museum Takada)	Restore the Sense of Touch: Blind People See the Unseen World	360
November 23, 2024	OKADA Emi ABE Sakurako (Film Director)	Musie documentary film ‘The Path’	237
Total			1,542

Minpaku Visual Ethnography Theater

Date	Lecturer	Title	Attendance
February 2, 2025	KURODA Kenji KONAGAYA Yuki (Professor Emeritus, National Museum of Ethnology)	Mongolian Leaders in the 20th Century: Industry, Pastoralism, and Agriculture	65
February 11, 2025	KURODA Kenji KAWASE Itsushi	Living in Connection: Ethiopians in Tokyo	74
Total			139

Minpaku World Cinema

By selecting appropriate movies for theme “Thought on The Future of Humanity from Films”, the Museum offers a series of film showings accompanied by researcher commentary.

No.	Date	Lecturer	Title	Attendance
57	May 25, 2024	SUGASE Akiko NOBAYASHI Atsushi	GAGA	302
58	December 14, 2024	SUGASE Akiko	God Exists, Her Name Is Petrunya	272
59	February 24, 2025	KURODA Kenji SHIMAMURA Ippei	The Sales Girl	291
Total				865

Visual Anthropology Forum

Date	Lecturer	Title	Attendance
October 26, 2024	KAWASE Itsushi, MINAMI Makito	The Perspective of Audiovisual Ethnography on Bards: Comparison of Ethiopia and Nepal	28

Campus Members

This membership program is aimed at providing opportunities to learn about cultural anthropology and ethnology through cooperation between the National Museum of Ethnology and educational institutions such as universities.

Member schools and corporations receive privileges such as participation in events, including exhibition tours, special lectures and performances, and movies free of charge and discounts at the Museum Shop.

Member schools in FY2024

Osaka University, Kyoto University, Senri Kinran University, Tsukamoto Gakuin Institute (Osaka University of Arts, Osaka University of Arts Junior College, Osaka College of Art), Doshisha University (Faculty of Global and Regional Studies, Faculty of Culture and Information Science, Graduate School of Culture and Information Science, The Institute for the Liberal Arts), Ritsumeikan University, Otemon Gakuin University (Faculty of Letters, Faculty of International Studies, Faculty of International Liberal Arts)



Data Collection

History

1935	A plan to establish an ethnological museum of Japan as an incorporated foundation is developed under the leadership of SHIBUSAWA Keizo and SHIRATORI Kurakichi.
1964	The Japanese Society of Ethnology, the Anthropological Society of Nippon, the Japanese Archaeological Association, the Folklore Society of Japan, and the Japanese Association of Ethnology jointly submit to the Minister of Education and other relevant authorities a request to establish a national ethnological research museum.
1972	A research council (chaired by KUWAHARA Takeo) conducts a feasibility study on the establishment of a National Ethnological Research Museum. A basic concept plan for the museum is submitted to the Minister of Education.
1973	A preparatory council for the establishment of a National Ethnological Research Museum (tentative name) and a preparation office are set up.
1974	The National Museum of Ethnology is founded under the “Law to amend part of the National School Establishment Law” (No. 81, 1974), with an Administration Department, an Information and Documentation Center, and five Research Departments. Collecting artifacts from overseas was started in Papua New Guinea.
1975	A collection of folklore reference materials (28,432 items) owned by the former Ministry of Education Archive were transferred from the National Institute of Japanese Literature.
1977	The Museum buildings (28,778m ²) are completed and the surrounding area is landscaped. An opening ceremony is held. Exhibitions on Oceania, the Americas, Europe, Africa, West Asia, Music, Language, Southeast Asia, and East Asia (Japanese Culture), as well as the Videothèque are opened to the Public.
1978	Long-term and carefully organized “Special Projects” are started as key components of ethnological research.
1979	The fourth Exhibition Hall (1,272m ²), which accommodates an additional exhibition on East Asia (Japanese Culture), is completed and opened to the public. Exhibitions on Central and North Asia, and East Asia (Ainu Culture) are opened to the public.
1981	The Auditorium (3,704m ²) is completed.
1983	The eighth Exhibition Hall and other facilities (4,816m ²) are completed. The exhibition on East Asia (Cultures of the Korean Peninsula and Regional Cultures of China) is opened to the public.
1984	The 10th anniversary of the Museum’s founding is celebrated. “A Ten-Year History of the National Museum of Ethnology” is published.
1987	The 10th anniversary of the Museum’s opening to the public is celebrated.
1989	The School of Cultural and Social Studies (with the Department of Regional Studies and the Department of Comparative Studies) of the Graduate University for Advanced Studies is established within the Museum. (It has been reorganized as Anthropological Studies of Graduate Institute for Advanced Studies since 2023AY.) The Special Exhibition Hall and the library stacks (5,292m ²) are completed. The first special exhibition, “The Great Andes Civilization: Inca, the Reviving Empire of the Sun” is organized to celebrate the completion of the Special Exhibition Hall.
1993	The main Museum building is expanded and a joint research facility (891m ²) is completed.
1994	The 20th anniversary of the Museum’s founding is celebrated. The Japan Center for Area Studies is established. (Discontinued in FY2005)
1995	Owing to damage caused by the Hanshin-Awaji Great Earthquake, the entire collection is closed for 45 days. (Earthquake-proof reinforced construction was retrofitted between 2002 and 2003) The Center of Excellence (COE) program is established: “Pioneering Research for the Development of New Ethnological Studies Using Multimedia in the Global Era.” (Concluded at the end of FY1999)
1996	The seventh Exhibition Hall (6,439m ²) is completed. Exhibitions on Language and Southeast Asia are renovated. An audio-visual gallery, the Materiatheque, and the exhibition on South Asia are opened to the public.
1997	The 20th anniversary of the Museum’s opening to the public is celebrated.
1998	Following the enactment of the Ministerial Ordinance to revise part of the administrative rules for the Inter-University Research Institute (Ordinance of the Ministry of Education No. 24 of 1998), the five research departments are reorganized into four research departments and one research facility.
1999	The Minpaku “Digital Guide and Study Area” are completed and opened to the public.
2000	A renovated exhibition on the Cultures of the Korean Peninsula is opened. Partial renovation of the Museum exhibitions continued until 2003.
2004	As authorized by the National University Corporation Act (Act No.112,2003), the National Institutes for the Humanities, as part of the Inter-University Research Institute, is established. The former system of 4 research departments and 1 research center is reorganized into a system with 3 research departments and 2 centers. To facilitate joint research, screening by the Joint Research Committee, whose members include representatives from the research community, is established and the scope of the call for joint research applications expanded. “Core research projects” conducted by the Museum are launched. The 30th anniversary of the Museum’s founding is celebrated.
2006	“A Thirty-Year History of the National Museum of Ethnology” is published. The Minpaku Collections Help Desk opens.
2007	The 30th anniversary of the Museum’s opening to the public is celebrated. Anniversary ceremony is held in November.
2008	A collaborative agreement is signed with the Japanese Society of Cultural Anthropology.
2009	Renovation of the Main Exhibitions is initiated.
2010	New systems are consolidated including the establishment of the Center for International Academic Exchange.
2013	Consolidation of new systems, including the Audit Office and Umesao Archives.
2014	Multifunctional Storage Building (1,423m ²) is completed.
2017	Renovation of the Main Exhibitions was completed, anniversary ceremony is celebrated. The former system of 3 research departments and 2 research centers is reorganized into a system with 4 research departments and 1 research center. The 40th anniversary of the Museum’s opening to the public is celebrated. Anniversary ceremony is held in November. Joint-Use Facilities for Scientific Research is established.
2018	The exhibition hall was closed for 66 days because of damage caused by the Osaka northern district earthquake. The library was closed for 49 days.
2019	Renewal of the Main Exhibition is initiated (Completed in March 2024).
2020	The National Museum of Ethnology was closed for 111 days because of the novel coronavirus disease (COVID-19) pandemic. New totem pole is raised.
2021	The National Museum of Ethnology was closed for 59 days because of the novel coronavirus disease (COVID-19) pandemic. Operation of the auditorium is started as Minpaku Intelligent Hall.
2022	Minpaku Theater and Data Station are completed and opened to the public.
2024	The 50th anniversary of the Museum’s founding is celebrated. “A Fifty-Year History of the National Museum of Ethnology” is published.

Former Directors-General as of April 1, 2025

First Director-General June 1974–March 1993 UMESAO Tadao* Ethnology, Comparative Study of Civilizations	Second Director-General April 1993–March 1997 SASAKI Komei* History of Agriculture in East and South Asia	Third Director-General April 1997–March 2003 ISHIGE Naomichi Cultural Anthropology	Fourth Director-General April 2003–March 2009 MATSUZONO Makio Social Anthropology	Fifth Director-General April 2009–March 2017 SUDO Ken’ichi Social Anthropology
Sixth Director-General April 2017–March 2025 YOSHIDA Kenji Cultural Anthropology, Museum Anthropology				

Professors Emeriti as of April 1, 2025

1984– SOFUE Takao* Psychological Anthropology	1997– SUGIMURA Toh* Study of Ethno-arts	2005– MATSUBARA Masatake Social Structure, Turkey, Eastern Asia, Central Asia	2015– SHOJI Hiroshi* Finno-Ugric Linguistics, Ethnolinguistics, Language Policy; Northern Europe, China	2023– NISHIO Tetsuo Linguistics, Arab Culture; Middle East, North Africa
1985– IWATA Keiji* Cultural Anthropology	1998– WADA Shohei Comparative Study of Cultures, Anthropology of Africa	2005– OHTSUKA Kazuyoshi Aynu (Ainu) Culture, Material Culture of North Asian Food Gatherers, Paleoecology, Prehistoric Subsistence, Japan	2015– YASUGI Yoshiho Linguistic Anthropology, Writing Systems, Mayan Civilization, Mesoamerica	2023– SUZUKI Nanami Cultural Anthropology, Culture of Medicine, Life-Design Studies, American and European Medieval Social History
1986– KATO Kyuzo* Ethnic History in North and Central Asia	2000– SHIMIZU Akitoshi Comparative Study of Families, Study of Oceania	2006– ISHIMORI Shuzo Cultural Development Studies, Anthropology of Tourism, Museum anthropology, Cultural Resource Management; Micronesia, Polynesia, Southeast Asia, Japan	2016– ASAKURA Toshio Social Structures in East Asia; Korea, Japan	2024– IKEYA Kazunobu Cultural Geography, Southern African, Japan
1988– ITOH Mikiharu* Anthropology of Religion	2001– HATA Nobuyuki Economic Anthropology, Anthropology of Africa	2006– NOMURA Masaichi* Nonverbal Communication, Ethnology of Mediterranean Europe	2016– SASAKI Shiro Socioeconomic History of Reindeer-Breeders and Forest Hunters; Northern Asia, Siberia	2024– KISHIGAMI Nobuhiro Cultural Anthropology, Inuit Studies; North America
1988– NAKAMURA Shunkichi* Study of Ethnic Technologies and Tools	2001– KURODA Etsuko Theory of Ethnicity and Social Culture, Anthropology of Central America	2007– OMORI Yasuhiro Ethnology, Visual Anthropology	2016– SUGIMOTO Yoshio Social Anthropology; Sri Lanka, South India	2024– SONODA Naoko Conservation Science
1989– KIMISHIMA Hisako* Chinese Folklore	2001– SAKIYAMA Osamu Linguistic Anthropology, Oceanic Linguistics	2007– YAMAMOTO Norio Ethnobotany, Ethnology, the Andes, the Himalayas	2017– SUDO Ken’ichi Social Anthropology	2025– MATTHEWS, Peter J. Ethnobotany, Prehistory, Crop Plant Biogeography; Asia, Pacific
1990– WADA Yuiti* Linguistic Anthropology	2002– KOYAMA Shuzo* Ethnoarchaeology	2009– MATSUZONO Makio Social Anthropology	2017– TAKEZAWA Shoichiro African History, History of Anthropological Thought; West Africa	2025– SASAHARA Ryoji Japan, Folk Culture, Performing Arts
1991– TARUMI Minoru* Anthropology in Spatial Domains	2002– MORITA Tsuneyuki Conservation Science, Ethno-technology	2010– MATSUYAMA Toshio Ethnology of Contemporary Australian Aboriginal Society	2017– TSUKADA Shigeyuki Ethnohistory; Southern China	2025– SHINMEN Mitsuhiro Science of Religion, Eastern Europe
1992– SUGIMOTO Hisatsugu* Cultural Geography, Cultural Anthropology	2003– ISHIGE Naomichi Cultural Anthropology	2011– NAGANO Yasuhiko Historical Linguistics, Lexical Semantics; Tibeto-Burman Area	2018– INTOH Michiko Prehistory of Oceania; Oceania, Island Southeast Asia	2025– SUZUKI Motoi Anthropological Perspectives on Development Assistance Evaluations
1993– KATAKURA Motoko* Social Geography, Ethnology	2003– KURITA Yasuyuki Museum Anthropology, Study of Bhutan	2012– AKIMICHI Tomoya Maritime Anthropology, Ecological Anthropology; Oceania, Southeast Asia, Japan	2018– YOKOYAMA Hiroko Cultural Anthropology, Chinese Society and Culture	2025– UDAGAWA Taeko Cultural Anthropology, Gender Studies; Italy, Mediterranean Europe
1993– OGYU Chikasato* Cultural Structure of Latin America	2003– SUGITA Shigeharu Computer Ethnology, Study of Civilization	2012– NAKAMAKI Hirochika Japanese Religion, Brazilian Company Culture; Japan	2020– TERADA Yoshitaka* Ethnomusicology, Study of South India	2025– YOSHIDA Kenji Cultural Anthropology, Museum Anthropology
1993– UMESAO Tadao* Ethnology, Comparative Study of Civilizations	2004– FUJII Tatsuhiko Prehistory of the New World Continent	2014– KOBAYASHI Shigeki Museum Science, Cultural Anthropology	2021– DEGUCHI Masayuki Third Sector Research, Civil Society Studies	* Deceased
1994– TAKEMURA Takuji* Social Anthropology	2004– TACHIKAWA Musashi Philosophy of Religion, Buddhist Thought	2014– TAMURA Katsumi Cultural Anthropology; Southeast Asia, East Asia	2022– HAYASHI Isao Social Structure, Cosmology, Risk and Disaster; Melanesia, Polynesia, Japan	
1995– CHOU Ta-sheng* Theory of Material Culture	2004– KUMAKURA Isao History of Japanese Culture	2014– YOSHIMOTO Shinobu Textile Arts and Technology; Asia, Africa, America, Europe	2022– SEKI Yuji South American Archaeology, Cultural Anthropology	
1995– MATSUZAWA Kazuko Social Anthropology	2004– YAMADA Mutsuo* History of Latin America, Area Study of Latin America	2015– KUBO Masatoshi Ethno-Informatics, Computer Ethnology, Study on Aboriginal Australian Culture	2023– KONAGAYA Yuki Cultural Anthropology	
1996– DAIMARU Hiroshi* Comparative Study of the History of Lifestyles, Based on Clothing, etc.	2004– TANABE Shigeharu Social Anthropology of Southeast Asia		2023– MORI Akiko Cultural Anthropology, Ethnography; Central Europe, Germany, Austria, Japan	
1996– FUJII Tomoaki* Ethnomusicology, Anthropology of Music	2005– EGUCHI, Paul K.* Oral Literature and Naterial Culture of the Fulfulde-speaking People, Cameroon			

Organization

Research
Activities

Joint Use of
the Museum

International
Cooperation etc.

Data Collection

NIHU

SOKENDAI

General Information

Organization

Research
Activities

Joint Use of
the Museum

International
Cooperation etc.

Data Collection

NIHU

SOKENDAI

General Information

Note: Visiting Research Fellows and Overseas Visiting Fellows are not included in the numbers given for “Staff” members.

Category	Director-General	Prof.	Assoc. Prof.	Assist. Prof.	Project Prof.	Project Assoc. Prof.	Project Assist. Prof.	Research Fellow	Subtotal	Administrative & Technical Staff	Total
Staff	1	22	20	8	0	0	2	2	55	48	103
Visiting Research Fellows		9	6	3					18		18
Overseas Visiting Fellows											0
Director-General	1								1		1
Audit Office										(4)	(4)
Office of Administration										27	27
Office of Information and Documentation		(1)								21(1)	21(2)
Research Departments		20	16	5	0	0	2		43		43
Center for Cultural Resource Studies		2	4	3					9		9
National Museum of Ethnology								2	2		2

Parenthesis () shows the number of staff members holding two posts. The figure for administrative staff includes one project specialist.

Budget

FY2024		FY2025	
Revenue			
Category	(Millions of yen)	Category	(Millions of yen)
Management Expenses Grants	2,677	Management Expenses Grants	2,603
Foundation	2,469	Foundation	2,448
Others	208	Others	155
Revenue	67	Revenue	62
Admission fee	49	Admission fee	45
Others	18	Others	17
Facilities	222	Facilities	581
Grants-in-Aid for Scientific Research	235	Grants-in-Aid for Scientific Research	349
Total	3,201	Total	3,595
Expense			
Category	(Millions of yen)	Category	(Millions of yen)
Salaries	1,183	Salaries	1,177
Others	1,783	Others	2,069
Education and research	606	Education and research	466
Joint use	537	Joint use	591
General management costs	418	General management costs	431
Facilities	222	Facilities	581
Grants-in-Aid for Scientific Research	235	Grants-in-Aid for Scientific Research	349
Total	3,201	Total	3,595
Note: These figures are from the revised budget include the carry-over from the previous fical year and exclude the carry-over to the next fiscal year.		Note: These figures are from the annual budget include the carry-over from the previous fiscal year.	

Facilities

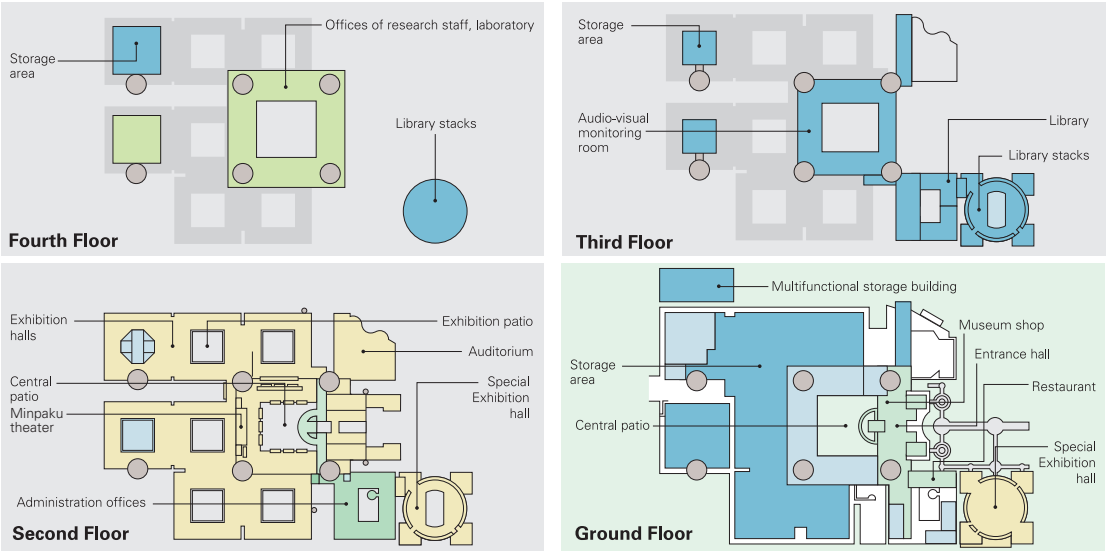
The Basic Concept of the Museum Design

The Museum consists of low-rise buildings which naturally blend with the surrounding park environment. In designing the buildings, special emphasis was placed on the aesthetics of traditional Japanese architecture. Each floor of the Museum’s main building is composed of several blocks. While the outer walls of these blocks have no openings for natural lighting, plenty of light is let in through the inner courtyards (patios). The patios provide a sense of openness and connection with the outer world, and are also used as open-air exhibition space.

Each floor is designed to be dedicated to a specific purpose, namely, storage on the first floor, exhibitions on the second, and research on the third and fourth. Elevators and staircases provide direct access to these floors. As the route is laid out in a manner that allows for a circular trip, visitors can either go through all the exhibitions, or choose to visit certain exhibitions of interest.

In addition, in order to make the Museum barrier-free and universally accessible, changes such as the installation of Braille labels are ongoing.

Total area of grounds: 40,821 m² Ground area occupied by the museum buildings: 18,177 m² Total floor space: 52,648 m²	Fourth Floor 7,207 m² Offices of research staff members, laboratories, library stacks, and storage area.	Third Floor 7,340 m² The library, library stacks, audio-visual monitoring room and storage areas.	Rooftop 846 m²
	Second Floor 16,830 m² Exhibition halls, patio, central patio, multifunctional terminal room, administration offices, Special Exhibition hall and auditorium (seating capacity for 462 persons).	Ground Floor 17,410 m² Entrance hall, central patio, restaurant, Special Exhibition hall, storage area and museum shop.	Basement 3,015 m²
	Main Exhibition Halls 10,938 m²	Special Exhibition Halls 851 m² Ground Floor 639 m² Second Floor	



Cooperative Agreements

Promotion of Research Coordination and Collaboration with Overseas Research Institutes

Minpaku has established academic agreements with overseas research institutions for research cooperation and collaboration. In FY 2024, the agreements were renewed (concluded) with Shung Ye Museum of Formosan Aborigines (Taiwan), Taipei National University of the Arts (Taiwan), The Museum of Northern Arizona (USA), National Museum of Taiwan History (Taiwan). And the agreements were newly concluded with The University of the South Pacific (Fiji), iTaukei Trust Fund Board (Fiji), and Addis Ababa University (Ethiopia).

Name of the Institutes	Date of Agreement	Outline of Agreement
The University of the South Pacific (Fiji)	September 12, 2024	Academic exchange and promoting fieldwork in research.
iTaukei Trust Fund Board (Fiji)	July 1, 2024	Academic exchange, promoting fieldwork in research, and cooperation in exhibitions.
Addis Ababa University (Ethiopia)	July 1, 2024	International joint research, exchange of researchers, and academic collaboration in organizing events.
Taiwan Hakka Culture Development Center (Taiwan)	November 21, 2023	Exchange and cooperation in museum exhibitions.
The Grand Egyptian Museum (Egypt)	October 1, 2023	Exchange of information relating to personnel, management, display, analysis of museum materials, and overall museum management; and promotion of joint research and exhibition planning.
Ghent University (Belgium)	September 18, 2023	International joint investigations and research, researcher exchanges, and information exchange related to exhibition materials.
The Faculty of Forestry, Kasetsart University (Thailand)	November 22, 2019	Academic research and exchange in joint research, training, publishing, and exhibition projects.
National Museums of Kenya (Kenya)	November 7, 2019	Conducting collaborative research projects including those on museum objects possessed by the Parties; Organizing lectures, symposia and joint exhibitions; Exchange of research information and materials; Promoting cultural and museological exchange programs; and Cooperation in exchange of research staff.
Bangladesh Agricultural University (Bangladesh)	November 3, 2019	Academic research and exchange in joint research, training, publishing, and exhibition projects.
Samarkand Archaeological Institute named Y. Gulomov, Agency of Cultural Heritage of the Republic of Uzbekistan (Uzbekistan)	September 19, 2019	Cooperation in a variety of research and academic projects; collaborative research in archeology, anthropology, geography, conservation science and other related fields; exchange of visiting scholars, curators and/or other research staff, etc.
Research Center for Environmental Archaeology, Maritime Archaeology and Sustainable Culture, Research Organization for Archaeology, Research Organization for Archaeology, Language, and Literature, The National Research and Innovation Agency (Indonesia)	June 10, 2019	International joint archaeological research in Indonesia, to reporting programme effectiveness, activities, and research results, etc.
National Museums Board (Zambia)	August 12, 2018	International joint research, exchange of researchers, exchange of museum-related materials and information, etc.
National Museum of Iran (Iran)	November 8, 2017	International joint research, exchange of researchers, exchange of museum-related materials and information, etc.
University of British Columbia, Museum of Anthropology (Canada)	March 9, 2017	Academic cooperation and exchange on research projects, exhibitions, database development, etc.
Zhejiang University (China)	April 19, 2016	Contribution of references, exchange of human resources, joint research.
Vanderbilt University (USA)	January 15, 2016	Strengthening global collaborative research and organizing international symposia.
National Museum of Taiwan History (Taiwan)	October 16, 2015	Collaborative research and cooperation on exhibition development.
The Museum of Northern Arizona (USA)	July 4, 2014	Strengthening academic exchange and collaborative research.
The Institute of Ethnology and Anthropology, Chinese Academy of Social Sciences (China)	August 28, 2012	Along with other scholarly exchanges, Minpaku participates in research projects and the exchange or shared use of research materials, academic data and publications.
The National Museum of the Philippines (Philippines)	July 18, 2012	International joint research, exchange of researchers, exchange through projects that include joint research training, publication and exhibits.
A:shiwi A:wam Museum and Heritage Center (USA)	June 3, 2012	Scholarly cooperation, development of joint research projects, and exhibits or educational use of museum materials.
Taipei National University of the Arts (Taiwan)	May 15, 2009	Academic exchange, development of research projects, cooperation on museum exhibitions and educational initiatives, exchange of academic information and publications.
The National Folk Museum of Korea (Korea)	July 11, 2007	Exchange between teaching faculty and researchers, development of research projects, cooperation on museum exhibitions and education, exchange of academic documents and publications.
Shung Ye Museum of Formosan Aborigines (Taiwan)	July 1, 2006	Collaborative research and cooperation on exhibition development.
The National University of San Marcos (Peru)	June 14, 2005	Joint research projects and academic exchanges in archaeology.

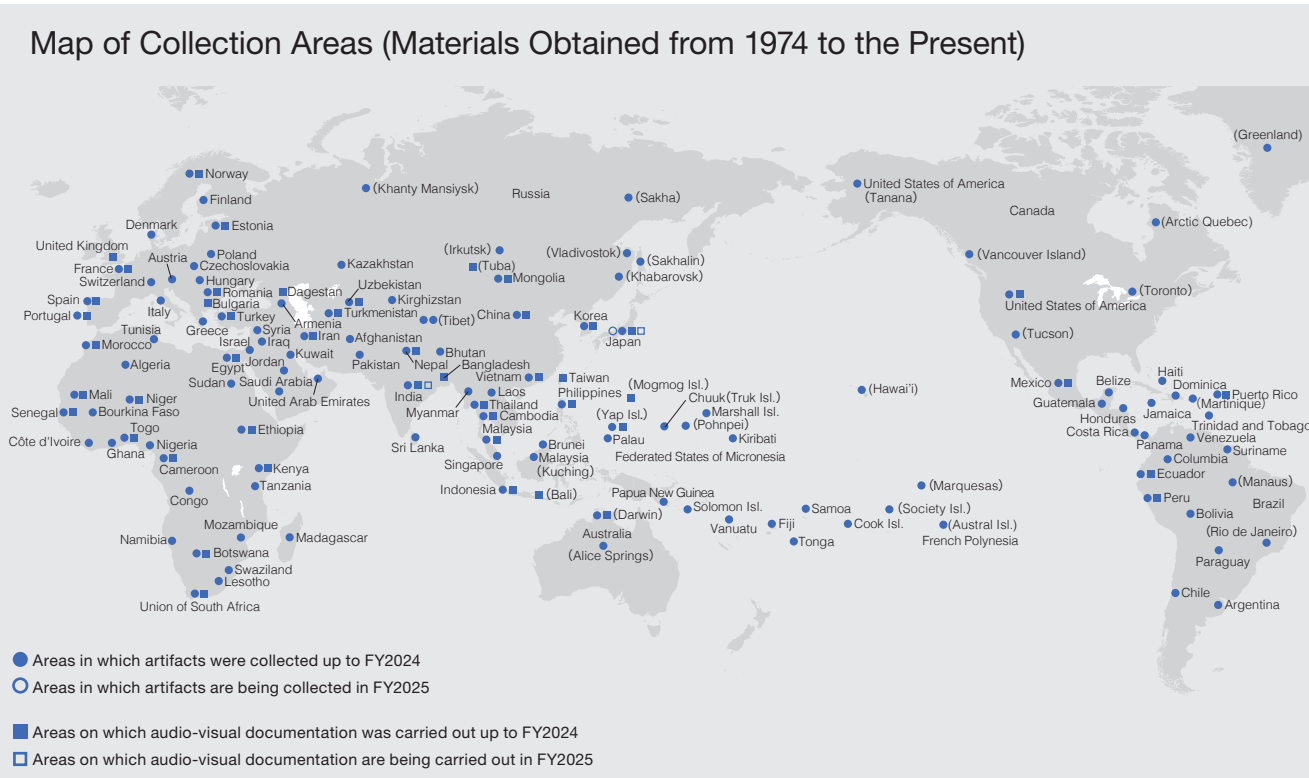
Promotion of Collaboration and Cooperation with Research Organizations in Japan

To promote collaboration, cooperation and joint research with universities, research organizations and academic associations in Japan, agreements are concluded following consideration. In September 2024, agreement was concluded with Toyooka City, Hyogo Prefecture (Japan Mongolia Folk Museum).

Name of the Institutes	Date of Agreement	Summary of the Agreement
Toyooka City, Hyogo Prefecture (Japan Mongolia Folk Museum)	September 1, 2024	Contribution to academic research, education, and social development
Sacred Heart Institute for Sustainable Futures, University of the Sacred Heart	January 9, 2024	Contribution to academic research, education, and social development
Osaka International Peace Center	December 1, 2023	Contribution to academic research, education, and social development
Hokkaido Kushiro Koryo High School	March 27, 2023	Contribution to education and social development
Research Institute for the Dynamics of Civilizations, Okayama University	September 12, 2022	Contribution to academic research, education, and social development
National Institute of Informatics	August 1, 2022	Contribution to academic research, education, and social development
Kanazawa College of Art	March 22, 2021	Based on the Heisei Hyakukouhishou collection database, the status and use of databases in higher education are verified. Educational materials for higher education were put to practical use by linking them to social businesses
Institute for the Study of Japanese Folk Culture, Kanagawa University	March 26, 2020	Contribution to academic research, education, and social development
The Society for Research in Asiatic Music	November 3, 2019	Contribution to the sustainable development of music culture and the elaboration of research on music culture
The Japan Society for the Conservation of Cultural Property	November 19, 2018	Promotion and dissemination of science, technology and skill for conservation of cultural property
Kyoto University of the Arts	March 19, 2018	Contribution to academic research, education, and social development
Osaka University	March 17, 2018	Contribution to academic research, education, social contribution, and development of other activities
Yamagata University	Februrary 16, 2018	Contribution to academic research, education, and social development
Graduate School of Humanities, Kobe University	July 15, 2016	Academic exchange on research education
Research Institute for Languages and Cultures of Asia and Africa, Tokyo University of Foreign Studies	November 25, 2015	Academic research, collaboration, and cooperation related to language and culture around the world
The Osaka Aquarium Kaiyukan	November 19, 2015	Contribution to society, collaboration, and cooperation through promotion of cooperation between businesses and universities, and advancement of academic research and research outcomes
Osaka Institute of Technology	March 23, 2015	Academic research and collaborative cooperation related to information media digital contents
Kanazawa University	March 23, 2014	Organizational system strengthening based on collaboration and cooperation of both institutions
Japanese Society of Cultural Anthropology	February 27, 2008	Promotion of utilization of research collaboration, research exchange, and mutual research outcomes. Contribution to the development and spread of academic matters in human society

Materials and Databases

The Museum has collected and stored a vast amount of materials and information concerning ethnology and anthropology for researchers inside and outside the country, and has made them available to society through exhibitions and other activities. To carry out these activities efficiently, the Museum has been trying to develop better ways to collect and manage materials, organize and provide information, create database systems and contents, hold exhibitions, and implement various other activities.



The Museum Collection of Artifacts and Other Materials as of March 31, 2025

Artifacts (registered and unregistered)	347,183	Books and Periodicals	Human Relations Area Files (HRAF)
From abroad	181,020	Books (Including bound magazines)	700,323
From Japan	166,163	Japanese materials	278,604
		Foreign language materials	421,719
Audio-Visual Materials	73,311	Journals	17,542
Visual Materials	8,426	Japanese periodicals	10,396
Audio Materials	64,885	Periodicals in other languages	7,146

List of Databases as of March 31, 2025

Databases of research resources held in the Museum and outcomes of research projects are made and open to the public. (For each database description, the numerical value(s) in brackets at the end means the number of records contained in it. Databases with an asterisk are for use only inside the Museum.)

Museum Objects

- Catalog of Museum Objects
A catalog of museum objects related to livelihoods, daily life, rituals, and production techniques. Each entry includes basic information such as object name, place, culture, the date of acquisition, dimensions, weight, and images. [287,800]
- Detailed Information about Museum Objects
Provides more detailed information about the museum's collection of objects, such as object names, their local names and Japanese translation, images, materials and techniques used in their production, dimensions, weight, as well as when, where and how they are created or used and by whom. [Inside the Museum: 287,768, including 138,969 records open to the public]
- Index of Published References on Museum Objects
A database that organized bibliographic information concerning the museum objects published by the museum. [84,114]
- Korean Daily Commodities Collection
Information (including images) on all daily commodities owned and used by a family in Seoul, South Korea. For each item, its location in their apartment, manner of acquisition, and the family's memories about it are recorded. [7,827]

- The George Brown Collection (Japanese and English versions)
Basic collection information (including images) for materials collected by George Brown, a missionary and ethnographer who worked in the Pacific Islands from the late 19th century to the early 20th century, and now held in the Museum. [2,992]
- Prints by Indigenous Peoples of Canada *
Basic information and description (including images) on our collection of typical prints created by indigenous peoples of Canada, most of which were displayed in our special exhibition *Voices from the Land, Visions of Life: Beauty Created by the Indigenous Peoples of Canada* in 2009. [158]
- The Minpaku Collection of Tibetan Icons and Amulets
Basic information about a wooden religious image of a white cat included in the Tibetan Buddhist painting collection stored by Minpaku and protective charms of traditional Tibetan Buddhism and Bon (image included). [1,439]
- Mao Zedong's Badge
It contains information on the characters and patterns of 98 Mao Zedong badges created in various parts of mainland China in 1966-1969, owned by the Museum (image included). [98]

Audio-Visual Materials

- Visual Materials Catalog
Information on our collections of movie films, videotapes and DVDs (photographs excluded). [8,426]
- Videotheque
Information on visual contents provided by the *Videotheque* System in the main exhibition hall of the Museum. It is searchable by keywords as well as by the menu of a Videotheque booth. [860]
- Performing Arts Film
Information (including videos) on film records of music, dance and theater that the Museum has made at various places in the world since 1982. Videos are available only inside the Museum. [849]
- The Matsuo Minori Postcard Collection
Information (including images) on picture postcards bought by MATSUO Minori in places visited during his service in the Japanese Navy from 1919–1923. [170]
- Photograph Collection of the Kyoto University Scientific Expeditions
Photographs taken by the Kyoto University Scientific Expedition to the Karakoram and Hindukush in 1955, by the Tonga Expedition of Kyoto University in 1960, by the Kyoto University African Scientific Expedition from 1961–1967, and by the Second Kyoto University Europe Scientific Expedition in 1969. [Inside the Museum: 42,210 including 24,869 records open to public]
- The Umesao Tadao Photo Collection *
Photographs taken by UMESAO Tadao, the first director general of the National Museum of Ethnology, during his fieldwork at various places in the world. [35,481]
- Photographs on Aboriginal Australian Culture *
Photographs of various scenes including ceremonies, daily life and landscapes in Aboriginal Australia from 1980–2004 taken by KOYAMA Shuzo, Professor Emeritus, National Museum of Ethnology. [7,999]
- The Asaeda Toshio Collection *
Photographs of people, animals and plants in the Pacific Islands taken by ASAEDA Toshio when he visited there in the 1930s as a member of several academic investigation teams. [3,966]
- Photographs of Maritime Peoples of Indian and Western Pacific Ocean: The Ōshima George Collection
Photographs taken by OHSHIMA George, during his fieldwork in Asia and Oceania from 1967–1991. [Inside the Museum: 8,842 including 7,889 records open to the public]
- Photographs of Cameroon, Africa: The Hata Nobuyuki Collection
Photographs taken by HATA Nobuyuki, Professor Emeritus, National Museum of Ethnology, during his fieldwork mainly in the Republic of Cameroon from 1969 to early 1990s. [6,543]
- Morihiro OKI's Photographs of India
Photographs taken by a photographer OKI Morihiro in various places in India and Nepal from 1977–1996. The database includes photographs focused on rituals, festivals, folk paintings, performing arts, artifacts, and everyday life. [Inside the Museum: 22,120 including 21,971 records open to the public]

Library Materials

- Book and Periodical Catalog
Bibliographic and holdings information about the books (including microfilms, etc.) and periodicals held in the Museum Library. [Books: 633,629 Periodical Titles: 17,564]

Languages

- The Nakanishi Collection: World Literary Materials
Information (with images of letter samples) on books, newspapers, manuscripts, and artifacts written in various languages and writing systems collected from all over the world by the late NAKANISHI Akira, former president of Nakanishi Printing Co., Ltd. [2,729]
- The Yoshikawa Database of Materials for a Sumerian Lexicon
Digitized notebooks with keywords for Sumerian language studies compiled by YOSHIKAWA Mamoru, Professor Emeritus, Hiroshima University. [Keywords: 33,450 Pages: 40,596]
- Talking Dictionary of Khinina-ang Bontok
An electronic dictionary of the Khinina-ang Bontok language spoken in Mountain Province, the Philippines, compiled by Lawrence A. Reid, Researcher Emeritus, University of Hawai'i. It contains image and sound data, as well as information typically found in a printed dictionary. [Headwords: 14,048]

Clothing Culture

- Clothing and Accessory Collection
Detailed information and images of clothing materials and accessory artifacts held in the Museum, and field photographs. [34,411]
- Publications Concerning Clothing Culture
Index of periodical articles and books that concern the culture of costumes and clothing. This database contains the following items: 1) Japanese periodical articles (current), 2) Japanese periodical articles (before the end of World War II), 3) Foreign language periodical articles, 4) Japanese books, 5) Foreign language ethnographies. [190,668]

Facts, etc.

- Research Reports of Materials Located in Japan *
Location information on persons and materials related to folklore and ethnology in Japan, containing 1) artifacts, 2) persons who disseminate traditional technologies, 3) visual materials, and 4) publications. This database was constructed based on the *Research Reports* compiled by researchers appointed by the Museum and published in 1980–2003 by the Museum. [21,373]
- Indigenous Architecture Restored by 3DCG: Wooden Buildings in Insular Southeast Asia
Information on wooden buildings which has been investigated by SATO Koji, former Associate Professor, National Museum of Ethnology, at various places in Southeast Asia since 1981. GIF animations derived from three-dimensional computer graphics takes us around the inside and outside of buildings. [Locations: 38, Buildings: 61]
- Cultural Heritage Recording Memories of Tsunami: Database of Temples, Shrines and Stone Monuments
Information (including images and maps) on temples, shrines, stone monuments and tablets conveying memories of tsunam in coastal area of Japan. [481]

- Nepal Photo Database (Japanese and English versions)
Photographs taken by TAKAYAMA Ryuzo, a graduate student of Osaka City University at that time, and other members of the Japanese Scientific Expedition for Northwestern Nepal in 1958, and information (including images) on artifacts collected by the expedition and now held in the Museum. [3,879]
- Photographs on Northwestern Nepal and Manaslu *
Photographs taken by the Japanese Scientific Expedition for Northwestern Nepal from 1958-1959, partly including ones probably taken by the science team of the first Japanese Alpine Club Manaslu Expedition in 1953. They were part of materials of the former Ministry of Education Historical Archives transferred to the Museum. [620]
- Ethnographic Images of the Spirit Dance in Thailand *
Photographs and videos of the Spirit Dance in Thailand shot by TANABE Shigeharu, Professor Emeritus, National Museum of Ethnology. The photographs can be searched and viewed by category, place, and ritual host of the Spirit Dance, and are also related to one of the research reports in Thai made about the dance. [Photographs: 10,082, Research reports: 41]
- Photographs from the Group of the Synthetic Research of Cultures of Southeast Asian Countries *
Photographs with related information taken by the research group of the Synthetic Research of Cultures of Southeast Asian Countries during the 1st and 2nd missions out of three missions from 1957–1964. [4,393]
- Slash-and-burn Agriculture: Komei Sasaki's Eyes
Photographs on swidden agriculture in Japan taken by SASAKI Komei, former director general of the National Museum of Ethnology, during his fieldwork. [451]
- Farmers World – The IWATA Keiji Collection
Photographs taken by IWATA Keiji during his fieldwork in Laos and Thailand during 1957 to 1962. [342]
- Slash-and-burn agriculture in Shikoku mountains: The FUKUI Katsuyoshi Collection(1969–1972)
Photographs taken by FUKUI Katsuyoshi in the Kyoto University Slash-and-Burn Study Group, which he formed in 1969, based in the Tsubayama village in Kochi Prefecture until 1972. [211]
- Audio Materials Catalog
Information on our collection of records, CDs and audio tapes. [64,885]
- Itemized Information on Audio Records in the Catalog
Piece-by-piece information on music, and episode-by-episode information on traditional folktale records in our collection of audio materials. [352,748]
- Umesao Tadao: Written Works (1934–)
Comprehensive catalog of written works from articles and books to endorers on the belly bands since 1934 by UMESAO Tadao, the first director general of the National Museum of Ethnology. [7,029]
- Japanese Traditional Folktales: The Inada Koji Collection
Information (including sound data) on Japanese traditional folktales, documented by INADA Koji at Kyoto Women's University and his group in 29 prefectures of Japan from 1967–1978 (446 tapes, about 190 hour recording). Sounds are available only inside the Museum. [3,696]
- rGyalrongic Languages (in English and Chinese)
Database of rGyalrongic Languages, spoken in northwestern Sichuan Province, China, compiled by NAGANO Yasuhiko, Professor Emeritus, National Museum of Ethnology and Dr. Marielle Primas. It contains 425/1200 lexical items and 200 sentences for 83 dialects/languages. It also contains sound data. [Words: 41,078 Sentences: 15,706]
- Chronology of Clothing Culture in Japan 1868–1945
A digital chronology of clothing culture in Japan from 1868–1945 when western style clothing was not yet common. It consists of information on events, contemporary conditions, illustrations, and memoirs which were collected from newspapers and clothing magazines in that period. [14,514]
- Image Database of Japanese Clothing Culture in the Modern Age
Image database on acculturation of clothing culture in Japan from1868-1945 when Japanese style clothing was as popular as western style one. It includes images found in illustrations of newspaper novels and books, photographs, and posters in that period. [6,800]
- The Heisei Hyakko-Hisho Collection
Information about “the Heisei Hyakko-Hisho,” a compilation of samples prepared by the Kanazawa municipal government and Kanazawa College of Art by collecting and organizing samples showing the processes and techniques, product samples, production tools, and materials for crafts from regions across Japan (image included). [579]
- Dyeing Sample by Yanagi Sensyoku Kakosyo
Information was shared by dyer Mr.YANAGI Seichi for approximately 200 sample cloth pieces produced at Yanagi Sensyoku Kakosyo, including the names, origins, processes, techniques of dyeing and weaving, tools and dyes used, and points of ingenuity (image included). [185]
- Exhibition Information Database
Basic information on exhibitions held by the National Museum of Ethnology (Main Exhibition, Special Exhibition, Thematic Exhibition, Collection Exhibition, and new acquisitions exhibitions) is included (image included). [199]

Number of Visitors in FY2024

Annual Number of Visitors

Total number of visitors	241,470	Adults	169,652
Daily average	794	Students	66,796
Total number of visitors since the establishment of the Museum	12,320,562	Children	5,022
primary, junior high school, high school, college and university			
below primary School			
Special Exhibitions			
A Special Exhibition for the 50th Anniversary of the Museum’s Founding “Masks in the Performing Arts and Festivals of Japan” March 28–June 11, 2024			44,159
A Special Exhibition for the 50th Anniversary of the Museum’s Founding “THE WORLD OF POET-SINGERS” September 19–December 10, 2024			30,616
Thematic Exhibitions			
A Thematic Exhibition for the 50th Anniversary of the Museum’s Founding “Conveying the realities of the Minamata disease” March 14–June 18, 2024			53,406
A Thematic Exhibition for the 50th Anniversary of the Museum’s Founding “Hakka and Japan: Another History of East Asian Relations Created by Chinese Overseas” September 5–December 3, 2024			47,346
Traveling Exhibitions			
“UNIVERSAL MUSEUM”: Exploring the New Field of Tactile Sensation July 6–September 16, 2024 Nogata Tanio Art Museum			2,097
“National Ainu Museum 9th Special Exhibition REGNUM IMAGINARIUM: Realm of the Marvelous and Uncanny” September 14–November 17, 2024 National Ainu Museum			18,192

Special Exhibitions

Exhibition Title	Period	Exhibition Title	Period
The Great Andes Civilization: Inca, the Reviving Empire of the Sun	Sept. 14 – Dec. 12, 1989	Pilgrimage and Sacred Places: A Voyage of Self Discovery	Mar. 15 – June 5, 2007
Masks in Equatorial Africa: Hidden Forest Spirits*	Mar. 15 – May 31, 1990	The Great Ocean Voyage: VAKA MOANA and Island Life Today	Sept. 13 – Dec. 11, 2007
The E.S. Morse Collection: Meiji Folk Crafts that Crossed the Pacific	Sept. 13 – Dec. 4, 1990	The Profound Earth: Ethnic Life and Crafts of China	Mar. 13 – June 3, 2008
Engelbert Kämpfer: The Genroku Period Viewed by a German*	Feb. 7 – Apr. 16, 1991	SELF and OTHER: Portraits from Asia and Europe	Sept. 11 – Nov. 25, 2008
Greater India: Deities and Man in the Hindu World	Aug. 1 – Nov. 5, 1991	When Japan’s Tea Ceremony Artisans Meet Minpaku’s Collections: Creative Art in Perspective	Mar. 12 – June 14, 2009
Daghestan, Crossroads of Civilization: Ethnic Arts of the Caucasus*	Mar. 12 – May 19, 1992	Voices from the Land, Visions of Life: Beauty Created by the Indigenous Peoples of Canada	Sept. 10 – Dec. 8, 2009
Aboriginal Australia: Fifty Thousand Years of Hunters and Spirits	Sept. 10 – Dec. 8, 1992	Africa in the Works of El AnatsuiA Fateful Journey	Sept. 16 – Dec. 7, 2010
Asia Viewed by Torii Ryuzo, a Pioneer of Ethnology*	Mar. 11 – May 14, 1993	Umesao Tadao: An Explorer For the Future	Mar. 10 – June 14, 2011
Ainu Moshiri: The Ainu World Viewed through Their Designs	June 10 – Aug. 17, 1993	Devotion to the Arts of Living Daily Life Among the Aynu of the Kurile, Sakhalin and Hokkaido Islands: Objects from the Late 19th - Early 20th Century Collections of Ethnological Museums in Germany and Japan	Oct. 6 – Dec. 6, 2011
Javanese Cotton Print: A World of Diverse Traditions	Sept. 9 – Nov. 30, 1993	“Modernologio” Now: Kon Wajiro’s Science of the Present	Apr. 26 – June 19, 2012
Indigenous Peoples and Cultures in Taiwan*	Mar. 10 – May 24, 1994	The Warp and Weft of Weaving: Handlooms and Textiles of the World	Sept. 13 – Nov. 27, 2012
Woven Flowers of the Silk Road: An Introduction to the Carpet Heritage of West Asia and Central Asia	Sept. 8 – Nov. 29, 1994	Zafimaniry Style: Life and Handicrafts in the Mist Forest of Madagascar	Mar. 14 – June 11, 2013
Music and Musical Instruments in Latin America*	Mar. 16 – May 30, 1995	Shibusawa Keizo Memorial Project Attic Museum	Sept. 19 – Dec. 3, 2013
Weaving Color as Culture: The Maya Today	Sept. 14 – Nov. 30, 1995	The Power of Images: The National Museum of Ethnology Collection	Sept. 11 – Dec. 9, 2014
Japan through the Eyes of Siebold and His Son	Aug. 1 – Nov. 19, 1996	Food Culture in Korea and Japan: The Tastes of NANUM and OMOTENASHI	Aug. 27 – Nov. 10, 2015
Images of Other Cultures: From the British Museum Collection	Sept. 25, 1997 – Jan. 27, 1998	Ishuretsuzo, the Image of Ezo: Tracing Persons, Things and the World	Feb. 25 – May 10, 2016
What is Inside? Forays and X-rays into Ethnographic Objects*	Mar. 12 – May 26, 1998	Amazing Show Tents in Japan	Sept. 8 – Nov. 29, 2016
Mongolia: The Rise of Nomadic Culture	July 30 – Nov. 24, 1998	Beads in the World	Mar. 9 – June 6, 2017
Cultural Heritage of the South Pacific: The George Brown Collection*	Mar. 11 – May 31, 1999	Revisiting Siebold’s Japan Museum	Aug. 10 – Oct. 10, 2017
Ethnic Cultures Abroad: People Moving, Cultures Mixing	Sept. 9, 1999 – Jan. 11, 2000	A “Tower of the Sun” Collection: Expo ’70 Ethnological Mission	Mar. 8 – May 29, 2018
Theater at the Museum: The Expressive Body	Mar. 18 – May 14, 2000	Transmitting Art and Craft: Japanese Industrial Design Originating in Tohoku	Sept. 13 – Nov. 27, 2018
Ethnology and the Rise of Cinema: From Shadow Theater to Multi-Media	July 20 – Nov. 21, 2000	Toys Expo–Children in Modern Japan	Mar. 21 – May 28, 2019
Ethnology of Life in the Taisho and Showa Periods: Shibusawa Keizo and the Attic Museum	Mar. 15 – June 5, 2001	REGNUM IMAGINARIUM: Realm of the Marvelous and Uncanny	Aug. 29 – Nov. 26, 2019
The Sea Otter and Glass Beads: Trade of Indigenous Peoples of the North Pacific Rim	Sept. 20, 2001 – Jan. 15, 2002	Treasures of Indigenous Peoples	Oct. 1 – Dec. 15, 2020
Seoul Style 2002: Life as It Is with the Lee Family	Mar. 21 – July 16, 2002	Local Cultures Assisting Revitalization: 10 Years since the Great East Japan Earthquake	Mar. 4 – May. 18, 2021
Wrapping Culture: Furoshiki and Wrapping Cloths of the World	Oct. 3, 2002 – Jan. 14, 2003	“UNIVERSAL MUSEUM”: Exploring the New Field of Tactile Sensation	Sept. 2 – Nov. 30, 2021
Mandala Deities in Tibet and Nepal	Mar. 13 – June 17, 2003	100 Years of Mongolia: Encounters through Photography	Mar. 17 – May 31, 2022
A West African Story-telling Village	July 24 – Nov. 25, 2003	“Homō loquēns” ‘talking human’: Wonders of Language and Languages”	Sept. 1 – Nov. 23, 2022
Messages from the Ainu: Craft and Spirit	Jan. 8 – Feb. 15, 2004	“Arte Popular”: The Creative and Critical Power of Latin Americans”	Mar. 9 – May 30, 2023
Multiethnic Japan: The Life and History of Immigrants	Mar. 25 – June 15, 2004	“Divine Affection: Enchanting Images of Hindu Deities”	Sept. 14 – Dec. 5, 2023
The Arabian Nights	Sept. 9 – Dec. 7, 2004	“Masks in the Performing Arts and Festivals of Japan”	Mar. 28 – June 11, 2024
More Happy Every Day: The World of Bricolage Art	Mar. 17 – June 7, 2005	“THE WORLD OF POET-SINGERS”	Sept. 19 – Dec. 10, 2024
Fashioning India	Sept. 8 – Dec. 6, 2005	“MINGU Design Expo: Discovering Sources of Wisdom”	Mar. 20 – June 3, 2025
Minpaku Kids-World: Objects as Ties between Children and Their Society	Mar. 16 – May 30, 2006		
Arabesque of Batik Designs and Techniwues: From Java to the World	Sept. 7 – Dec. 5, 2006		

*The distinction between a special exhibition and a thematic exhibition was abolished in 2001 and now all of the temporary exhibitions are called “Special Exhibitions”.

Internet

Website <https://www.minpaku.ac.jp/>

The website features Minpaku research, exhibits, and other activities, along with information on graduate education, publication, and materials in its library and collections.

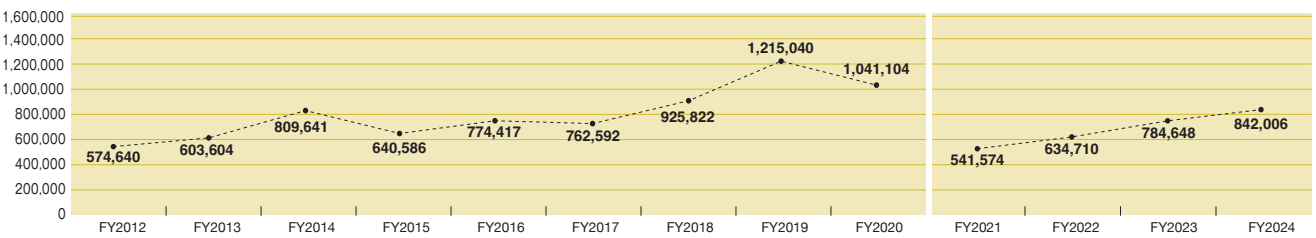
E-mail magazine <https://www.minpaku.ac.jp/research/publication/column/enews>

To provide updates on the latest research, special or thematic exhibitions and various events, like Minpaku Seminars, “Minpaku e-news”, a monthly newsletter is emailed to subscribers.

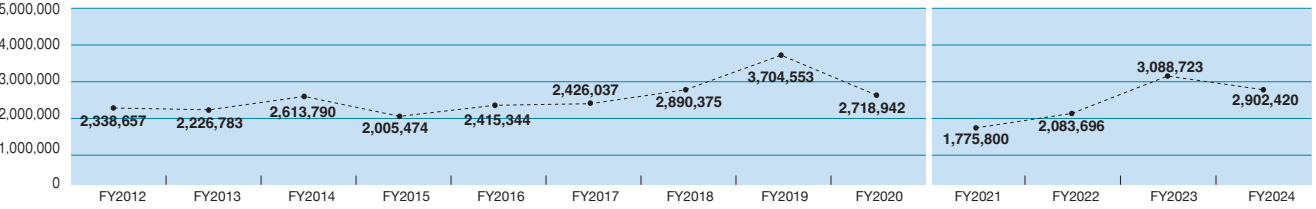
Social Media Facebook <https://www.facebook.com/MINPAKU.official>
X(Twitter) <https://x.com/MINPAKUofficial>
YouTube <https://www.youtube.com/MINPAKUofficial>
Instagram <https://www.instagram.com/MINPAKUofficial>

Using various social media provides opportunities to link Minpaku with people interested in cultural anthropology and ethnology, and also to give information on research and museum activities.

Number of Visitors to the Minpaku Website 842,006 (FY2024)



Number of Web Pages Accessed 2,902,420 (FY2024)



*Counting procedures have changed, due to the renewal of our website since FY2021.

Publicity through the Public Media

Publicity is developed through the mass media to convey information about Minpaku’s activities. A program entitled “Window of Research” was launched through the “Meeting for Media and Minpaku Staff”, held monthly on every third Thursday. The Museum has been mentioned in a total of 802 progarms and articles: 24 on TV and on radio, 447 in newspapers, 164 in magazines and 167 in other media. Minpaku has also been featured in regular radio broadcasts and newspaper series.

“Tabi, Iroiro Chikyujin [Journeys: Various People on the Earth]”

Published from April 2005 to March 2009 as a series entitled “The Study of Other Cultures” in the Mainichi Shinbun newspaper.

Materials for the General Public

Publicity

MINPAKU Anthropology Newsletter
Gekkan Minpaku [Minpaku Monthly]
Minpaku Calender

Guidebooks and Catalogues

Special Exhibition catalogue
“THE WORLD OF POET-SINGERS”

Special Exhibition catalogue
“MINGU Design Expo: Discovering Sources of Wisdom”





National Institutes for the Humanities (NIHU)

The National Institutes for the Humanities (NIHU) was established in 2004 as a corporation to support and further develop inter-university research institutes* that promote research in the humanities.

*Inter-University Research Institutes

As Japanese Centers of Excellence (COE) in their respective research fields, these institutes provide universities and other research institutes in Japan and overseas with large facilities and equipment as well as vast materials and information that are difficult for any individual university to maintain, thereby facilitating effective joint research.

NIHU's six institutes

- National Museum of Japanese History (REKIHAKU)
- National Institute of Japanese Literature (NIJL)
- National Institute for Japanese Language and Linguistics (NINJAL)
- International Research Center for Japanese Studies (NICHIBUNKEN)
- Research Institute for Humanity and Nature (RIHN)
- National Museum of Ethnology (MINPAKU)

These six institutes offer courses at the Graduate University for Advanced Studies, SOKENDAI. The six graduate (doctoral) courses take advantage of the institutes' respective resources to train scholars for broad perspective and a high level of expertise and learning.

The NIHU Headquarters houses the Center for Innovative Research (CIR), which conducts research and projects that link multiple institutes and universities, and promotes joint research using a research infrastructure built on digital technology.

NIHU's Mission

As the only inter-university research institute corporation for the humanities, NIHU's mission is to comprehensively explore humanity and its cultures, and through this exploration, to ask what true abundance is, to promote harmony between nature and humanity, and to contribute to the survival and coexistence of humankind.

NIHU's Vision

To realize its mission, in the NIHU's Fourth Mid-term Plan Period (FY2022-2027), NIHU aims to explore various social issues related to the diversity of human culture and social dynamics, try to solve them, and present new values and humanities knowledge that will serve as guidelines for the formation of a future society in which people and nature live in harmony and where science, technology, and humanity coexist. To achieve this, the Center for Innovative Research (CIR) was established in April 2022 with the aim of forming new knowledge open to society. Based on the philosophy of open humanities research through co-creation with various people in Japan and overseas, the center continues to build a research platform using digital technology, promote joint research through that platform, and work on the formation of a "Knowledge Forum" as a place for exchange and collaboration with various people in society and the formation of an international network.



Center for Innovative Research (CIR)

Based on the mission and vision, CIR promotes "NIHU Research Projects" and "NIHU Co-creation Initiatives."

NIHU Research Projects

NIHU Research Projects conduct basic and interdisciplinary researches, and promote three types of projects: Institute-based Projects, Multidisciplinary Collaborative Projects, and Network-based Projects.

Institute-based Projects NIHU's six institutes have established priority research themes in accordance with their respective missions. They collaborate with institutes and researchers both in Japan and overseas to conduct research that deepens knowledge and understanding of their respective specialist areas.	Construction of Japanese Historical Knowledge and Open Science Research
	Model Building in the Humanities through Data-Driven Problem Solving
	Empirical and Applied Research on the Japanese Language Based on Open Language Resources
	New Departures and Consortium for Global Japanese Studies: Pioneering and Cultivating Global Japanese Studies
	Renewing Modern Civilization through Nature-culture Complex toward Solving Global Environmental Problems
Multidisciplinary Collaborative Projects These are the projects in which NIHU's institutes take on a central role while collaborating with other NIHU's institutes as well as universities and other external institutes, working with research themes that cut across different fields.	Sustainable Development Humanities Research Based on the Info-Forum Archives of Human Culture
	Interdisciplinary and Integrated Studies on Local Cultures: Aiming for the Emergence of Novel Communities
	Object-based Research of Nature-human Interactions up to the Anthropocene
Network-based Projects These are the projects in which NIHU's institutes play a central role in forming a network with universities and other research institutes in Japan and overseas as well as implementing issues that are important to Japan and the world.	Expansion Studies of Synthetic Bibliology
	Global Area Studies Program
	Inter-University Research Institute Network Project to Preserve and Succeed Historical and Cultural Resources

NIHU Co-creation Initiatives

These are projects that promote the sharing of research results and co-creation with local communities and societies, promote "Co-creation Research Projects" and "Co-creation Outreach," whose aim is to develop research in three ways: "Social Co-creation" "Digitalization," and "International Co-creation".

Co-creation Research Projects

These projects promote joint research through co-creation with various organizations and people inside and outside NIHU as well as develop research in the following three ways.

- **Establishing Science for Universal Communication (S_COM)** [Social Co-creation]
- **Building Digital Library for Humanities** [Digitalization]
- **Japan-related Documents and Artifacts Held Overseas** [International Co-creation]
 - 1) Early Diplomatic Japanese Collections Abroad: Contextualizing 19th Century Japanese Material Heritage in World History through On-site and Online Research and Use
 - 2) Study on the Construction of Archival Infrastructure for the History of Modern Japan-Vatican Relations
 - 3) Japan-related Documents and Artifacts in Hawai'i: Historical and Social Survey Interface

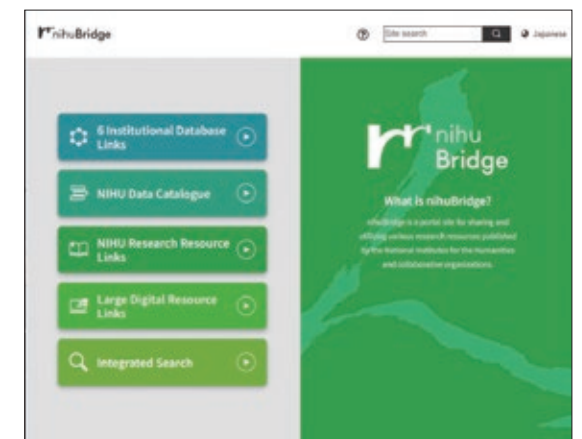
Co-creation Outreach

These initiatives implement projects to accelerate the three types of research development as well as aim to enhance and innovate research at NIHU's institutes and universities and other external institutes.

- **NIHU Knowledge Co-creation Projects** [Social Co-creation]
- **NIHU "Digital Humanities" (DH) Projects** [Digitalization]
- **NIHU Global Partnership** [International Co-creation]

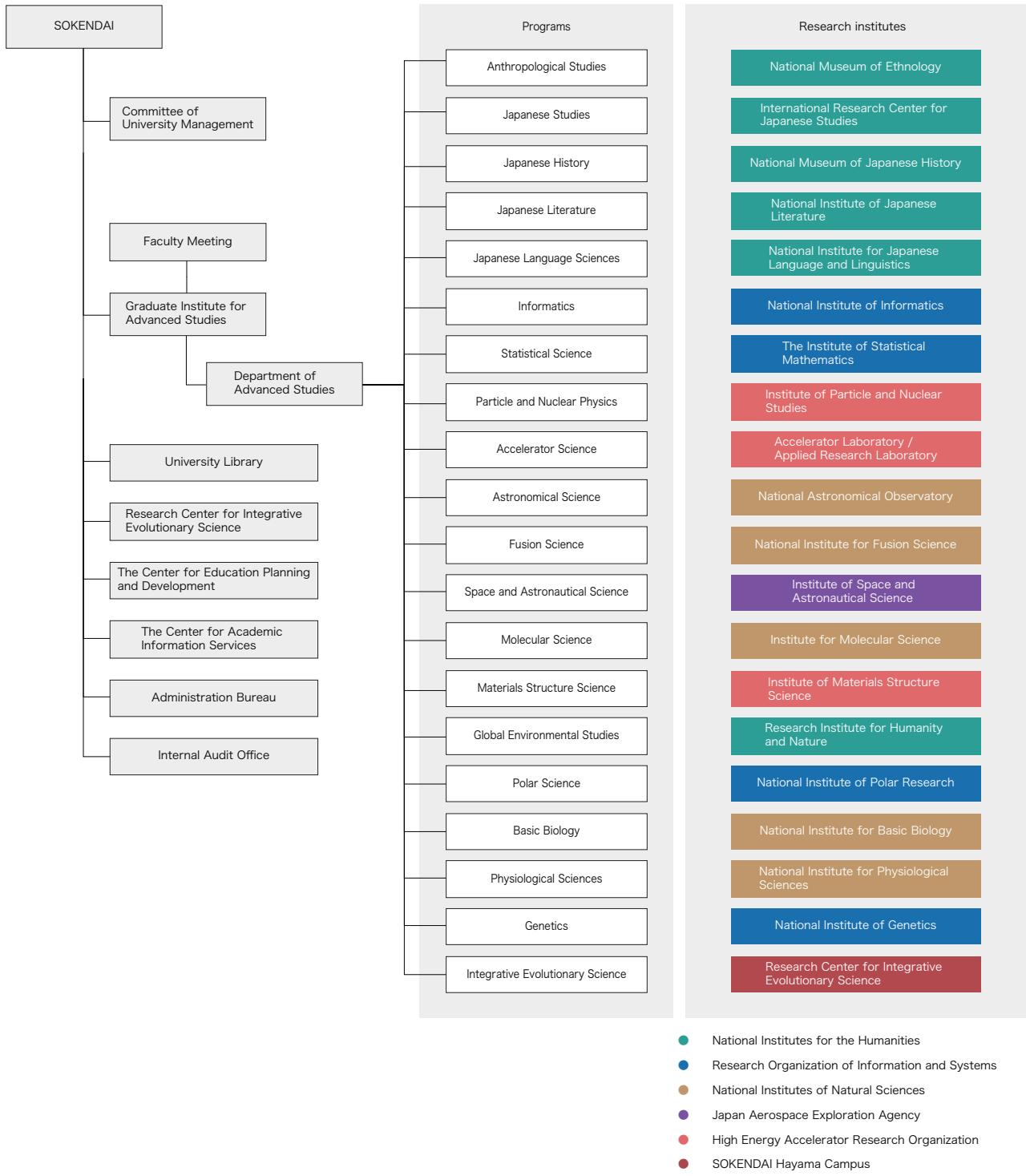
nihuBridge

This is a portal site for sharing and utilizing diverse research resources disseminated by NIHU and its constituent institutes.



The Graduate University for Advanced Studies, SOKENDAI, is a graduate university based on Inter-University Research Institutes. By promoting interaction among universities and graduate schools, both domestic and overseas, using a world-leading research environment of those institutes as a training ground, SOKENDAI aims to develop researchers with the ability to think from broad, comprehensive, and global perspectives.

University Organization



The Anthropological Studies Program

The Museum has established the Anthropological Studies (doctoral) program, Graduate Institute for Advanced Studies, SOKENDAI. It provides education and conducts research on the diverse cultures that humankind has created worldwide, from prehistoric to modern times. From the viewpoints of cultural anthropology, ethnology, and related fields, we guide ethnographic research, which descriptively analyzes a specific culture, and cross-cultural research, which compares different cultures from a specific perspective. Students aim to complete their doctoral dissertations using data collected through field work, objects, videos/sounds, and documentary materials held at the Museum.

Outline of the Program

Educational studies are composed of lectures and instruction by individual faculty members and shared seminars by multiple faculty members. Two types of shared seminars are offered: the basic seminar called the “First year Seminar” which is mainly for freshmen and the “Dissertation Seminar” for sophomores and more advanced students focusing on instruction for thesis writing. Common subjects (advanced theory) on cultural anthropology and ethnology are also conducted primarily for first year students.

Under student exchange agreements, credits for the program can be transferred among the Graduate School of Asian and African Area Studies at Kyoto University, the Graduate School of Human Sciences at Osaka University, the Graduate School of Intercultural Studies and the Graduate School of Human Development and Environment at Kobe University.

In most cases, students work on preparation for fieldwork during the first year, and proceed to fieldwork in the second or subsequent years under the supervision of their advisors. Then, after finishing their fieldwork, the students complete their dissertations under the individual guidance of their advisors and through participation in the “Dissertation Seminar”.

Number of Students as of April 1, 2025

Quota and Current Number of Students

Department / Program	Quota	Current Students			Total
		First year	Second year	Third year	
Anthropological Studies	4	3	2	4	9
Regional Studies				7	7
Comparative Studies				6	6
Total		3	2	17	22

※ In April 2023, the Departments of Regional Studies and Comparative Studies were reorganized into the Anthropological Studies Program.

Number of Doctoral Degrees Awarded

Academic Year	Regional Studies		Comparative Studies		Anthropological Studies		Total
	By Completing Doctoral Course	By Submitting Dissertation	By Completing Doctoral Course	By Submitting Dissertation	By Completing Doctoral Course	By Submitting Dissertation	
1991–1993			2	1			3
1994	2		1				3
1995	2		1				3
1996		3					3
1997	3		4				7
1998	4	2					6
1999							
2000	2		2	1			5
2001	1	1	2	1			5
2002	1	1		2			4
2003							
2004	2	3					5
2005	4	2		2			8
2006	2		3				5
2007	2	1	3				6
2008	1		1				2
2009		1	1	1			3
2010	2		2	3			7
2011	3		1	1			5
2012	1	1	1	1			4
2013			1	1			2
2014	2	1	2				5
2015	3	1					4
2016	1	1	1				3
2017	1		1				2
2018	1						1
2019	1		2				3
2020	1	1	2				4
2021	4		3	1			8
2022	1		1				2
2023	1					3	4
2024	1		1				2
Total	49	19	38	15		3	124

Acceptance of Overseas Researchers under the JSPS RONPAKU Program

Grantees of the JSPS RONPAKU (Dissertation Ph.D.) Program conduct their research under the supervision of advisors in the program.

Hours and Closing Days

Hours	10:00 a.m. to 5:00 p.m. Entry permitted up to 4:30 p.m.
Closing days	Every Wednesday. When a national holiday falls on a Wednesday, the Museum is closed on the following weekday. The Museum is closed from December 28 until January 4 for the year-end and New Year period.

Admission Charges

	Individual	Groups (20 persons or more) and visitors eligible for discount *
Adults	¥780	¥660
College and University Students	¥340	¥270
High School Students and Younger		Free

An additional charge may be necessary for Special Exhibitions.
Admission is free for holders of a Disabled Person's Handbook and one accompanying person per holder.
Admission is free for members of the Japanese Society of Cultural Anthropology, International Council of Museums, and Japan Association of Museums (a membership certificate is required).

*The following visitors qualify for a discounted admission charge (please present documentation);
1) Groups of 20 or more.
2) College, university, graduate, and vocational school students who use the Museum as part of their course work.
3) Those who have visited the Museum within the previous three months.
4) Visitors aged 65 and over (ID required).

Contact Information

National Museum of Ethnology
10-1 Senri Expo Park, Suita, Osaka 565-8511, Japan
Tel: +81-6-6876-2151 Fax: +81-6-6875-0401

Website

https://www.minpaku.ac.jp/en

Information and Services

The Minpaku Associates Tel: +81-6-6877-8893 (The Senri Foundation 9:00 a.m.–5:00 p.m. on weekdays only) minpakutomo@senri-f.or.jp
The organization, Minpaku Associates was formed to support the activities of the National Museum of Ethnology and to use its facilities actively.
With the cooperation of the museum, the Minpaku Associates publishes *Kikan Minzokugaku* (Ethnological Quarterly) and organizes and operates Ethnological Tours and Experiential Seminars offering opportunities for direct contact with various cultures, lectures, and other events.



Minpaku Associates Desk



Kikan Minzokugaku [Ethnological Quarterly]



Museum Shop (Hours: 10:00 a.m. to 5:00 p.m.)

At the museum shop, visitors can purchase folk crafts from various parts of the world, books about anthropology and ethnology, and the museum's original goods.



Museum Shop

Restaurant (Hours: 11:00 a.m. to 4:30 p.m. Last Orders: 4:00 p.m.)

Tel: +81-6-6310-0810
We serve lunch and dinner, including such dishes as hamburger steaks and pastas, and light meals and desserts. We can seat 110 diners, and our restaurant accepts reservations from small groups with a few individuals to large groups such as parties with many people. Group customers can also reserve our box lunches.



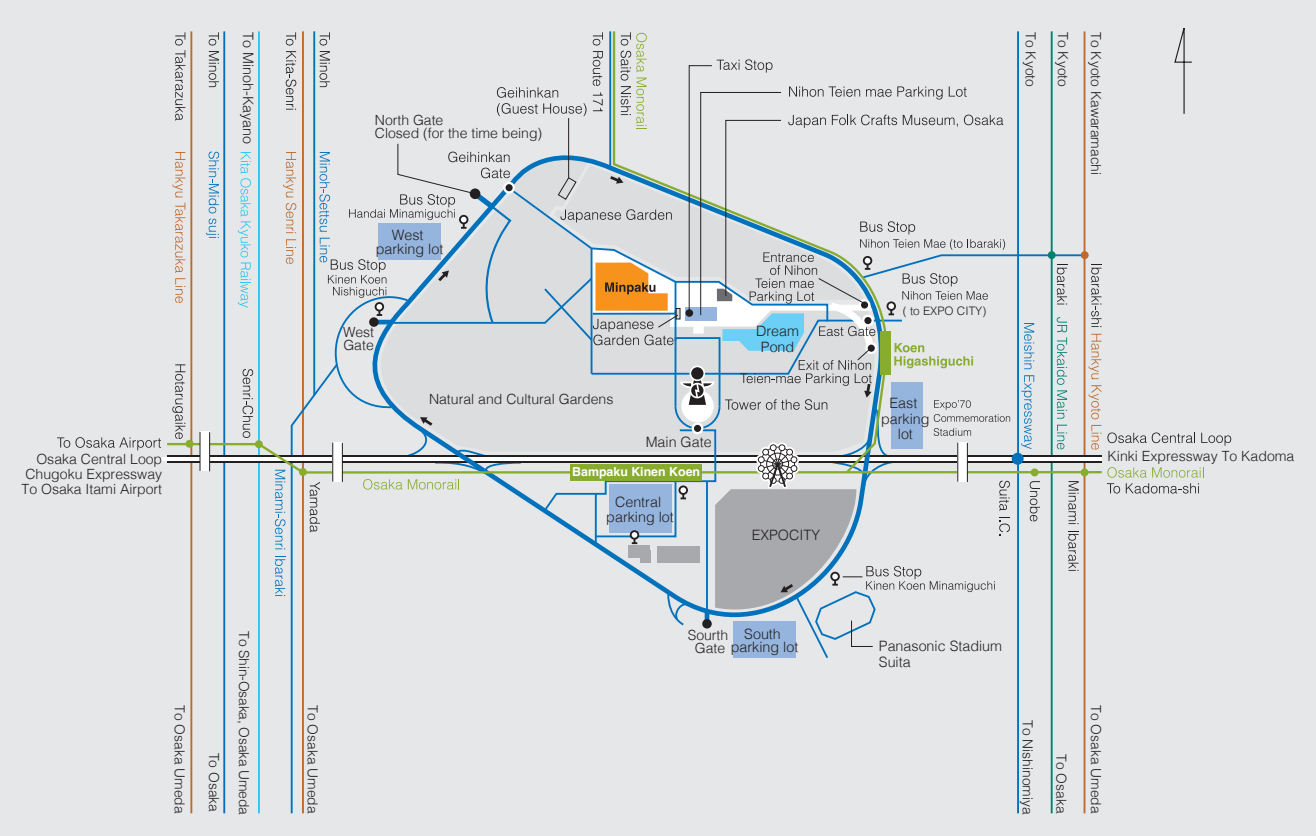
Restaurant

Access Information

- By Osaka Monorail, from Bampaku Kinen Koen Station or Koen Higashiguchi Station it is about a 15-minute walk to the Museum through the Natural and Cultural Garden.
- By car, please park at one of the parking lots for the Expo'70 Commemorative Park. From the nearest pay parking lot, in front of the Japanese Garden, it is about a 5-minute walk to the Museum. Please enter the Museum through the Japanese Garden Gate.
- By taxi, you will get dropped off in the parking lot in front of the Japanese Garden. Please enter the Museum through the Japanese Garden Gate.

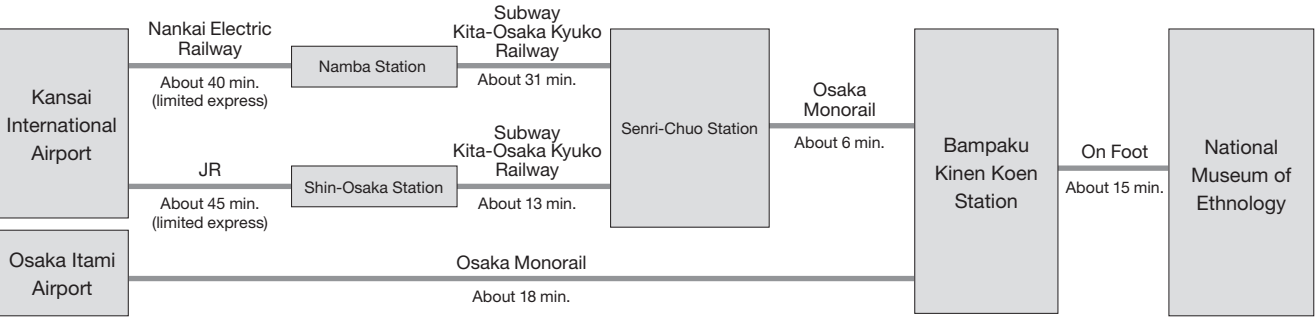
* Please buy a museum ticket at the gate of the Expo'70 Commemorative Park. Ticket holders can pass through the park at no charge.
* If you visit the Expo'70 Commemorative Park, you need to buy an entry ticket.

Map



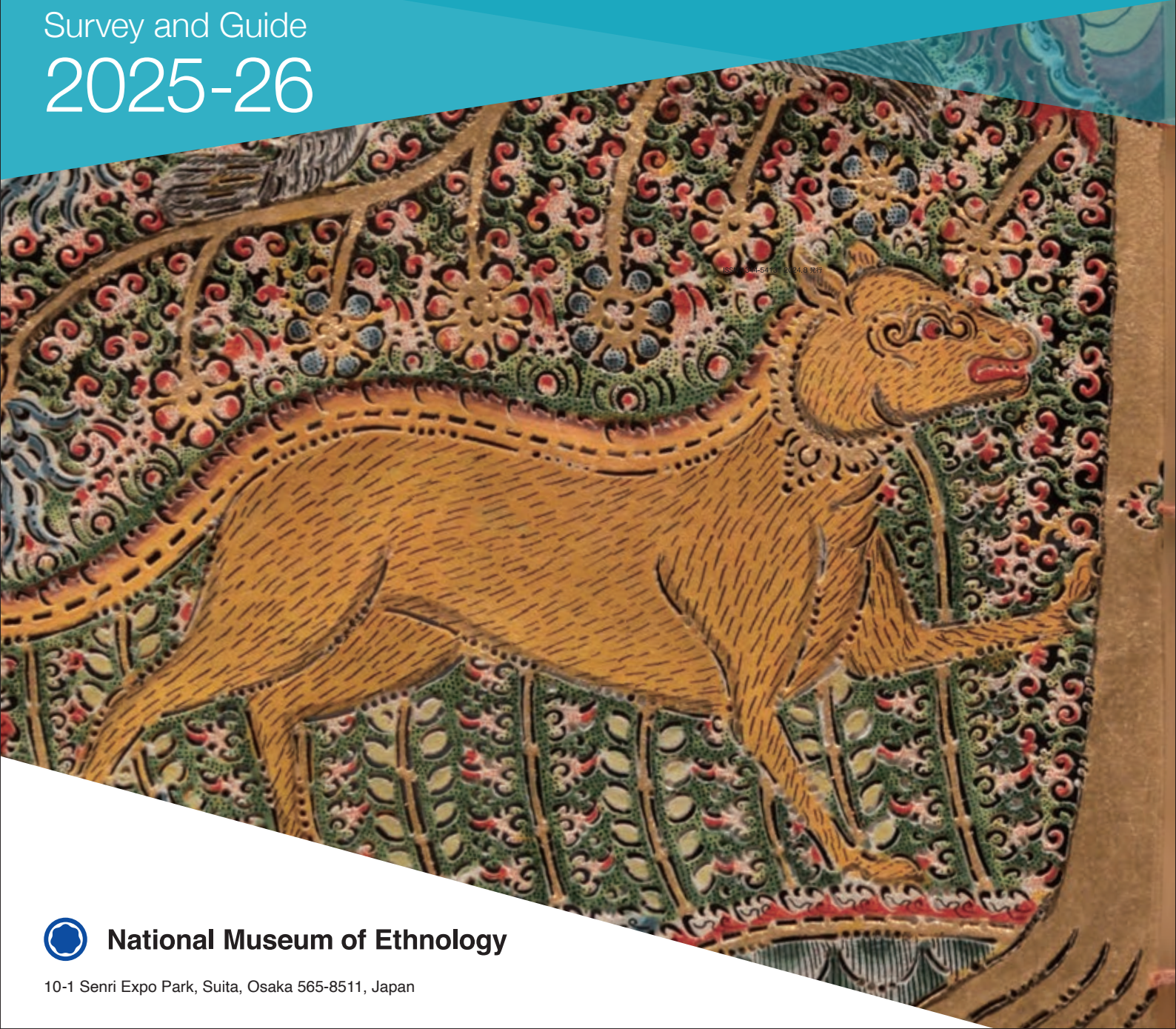
Major Access Routes

Access routes to the Museum from airports and major railway stations are as shown below.



The National Museum of Ethnology's emblem was created at its foundation (1974), symbolizing the solidarity and activity of the Earth (ethnicity and culture). The protruding parts represent Earth's seven continents and civilizations. The part surrounding the circle and protrusions represents Earth's seven seas.

Survey and Guide
2025-26



National Museum of Ethnology

10-1 Senri Expo Park, Suita, Osaka 565-8511, Japan